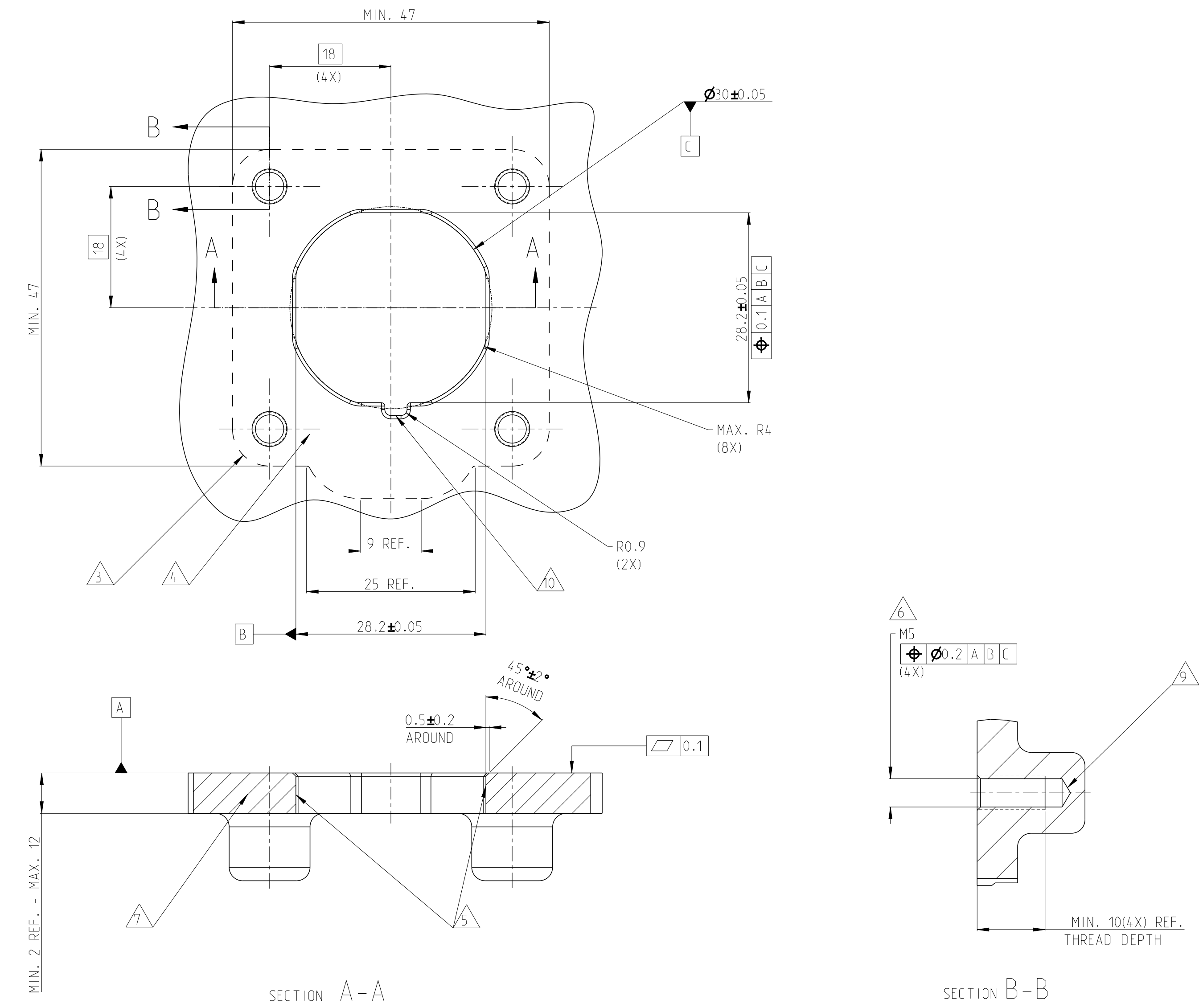
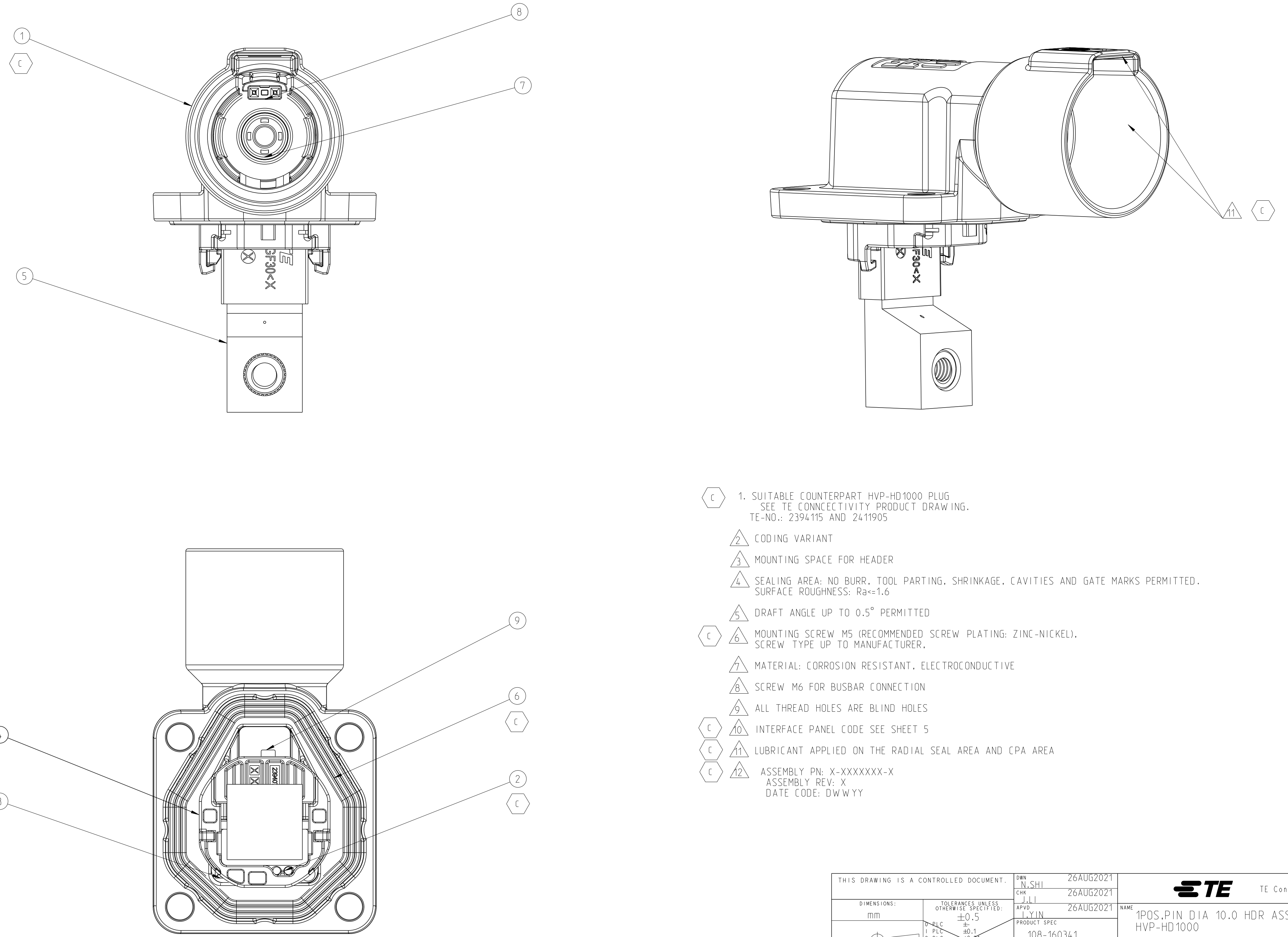


ADAPTER PLATE - HVP-HD1000 1POS HEADER INTERFACE



REVISIONS				
P	LTN	DESCRIPTION	DATE	APP'D
A2		INITIAL DRAWING	24.08.23	N.S 1.Y
A3		SCREW HOLE DIM. ADDED	28.08.22	C.C 2.Z
B		PLATED THROUGH HOLES INSERT CHANGED AND CHAMFER ADDED. LIP MATERIAL CHANGED	24.08.23	C.C 2.Z
C		PLATED HOLES COATING CHANGED. LUBRICANT ADDED. HWIL HWIP ADDED. FACE SEAL MATERIAL CHANGED. HOUSING MACHINING ADDED	30.08.24	C.C 2.Z

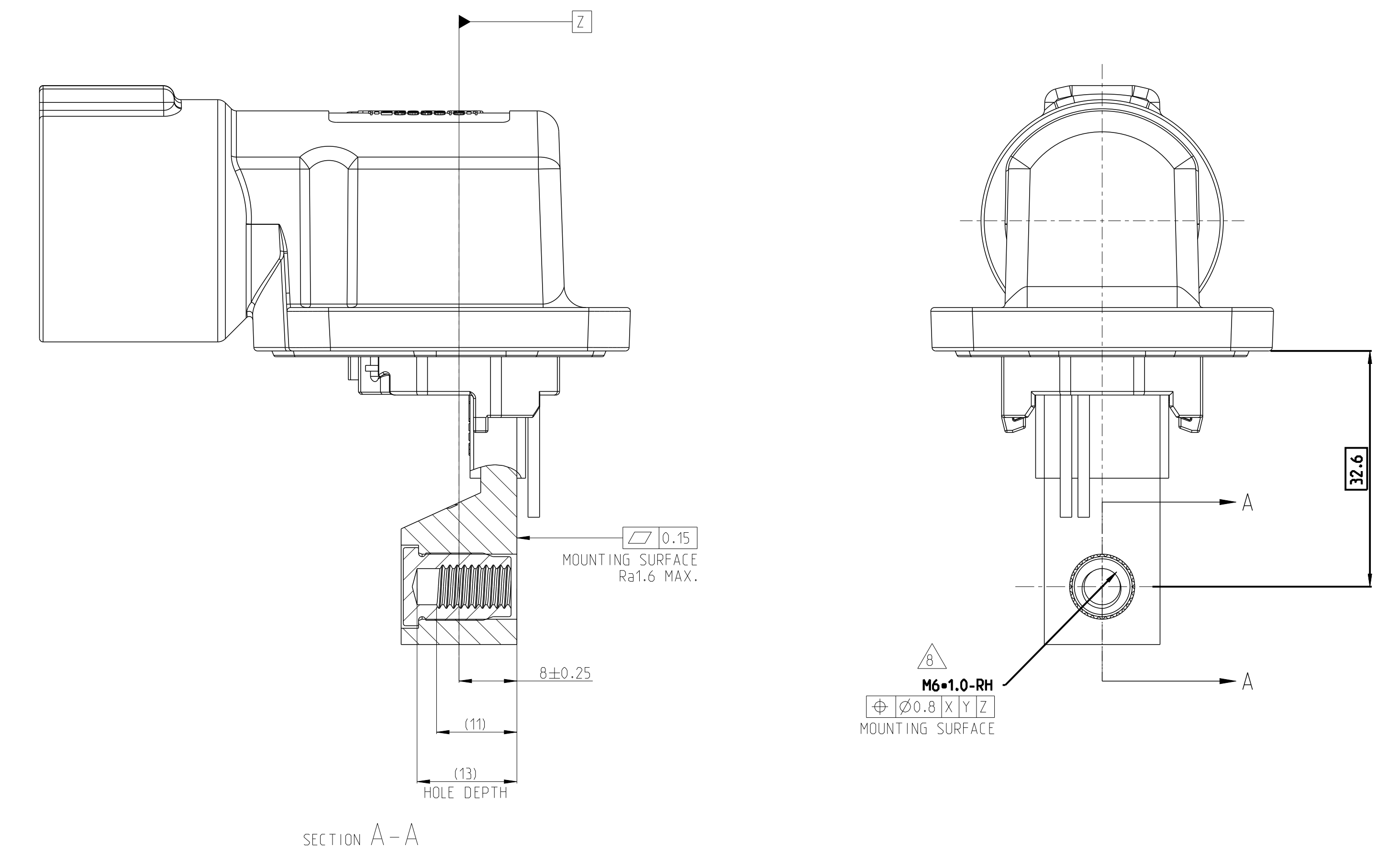
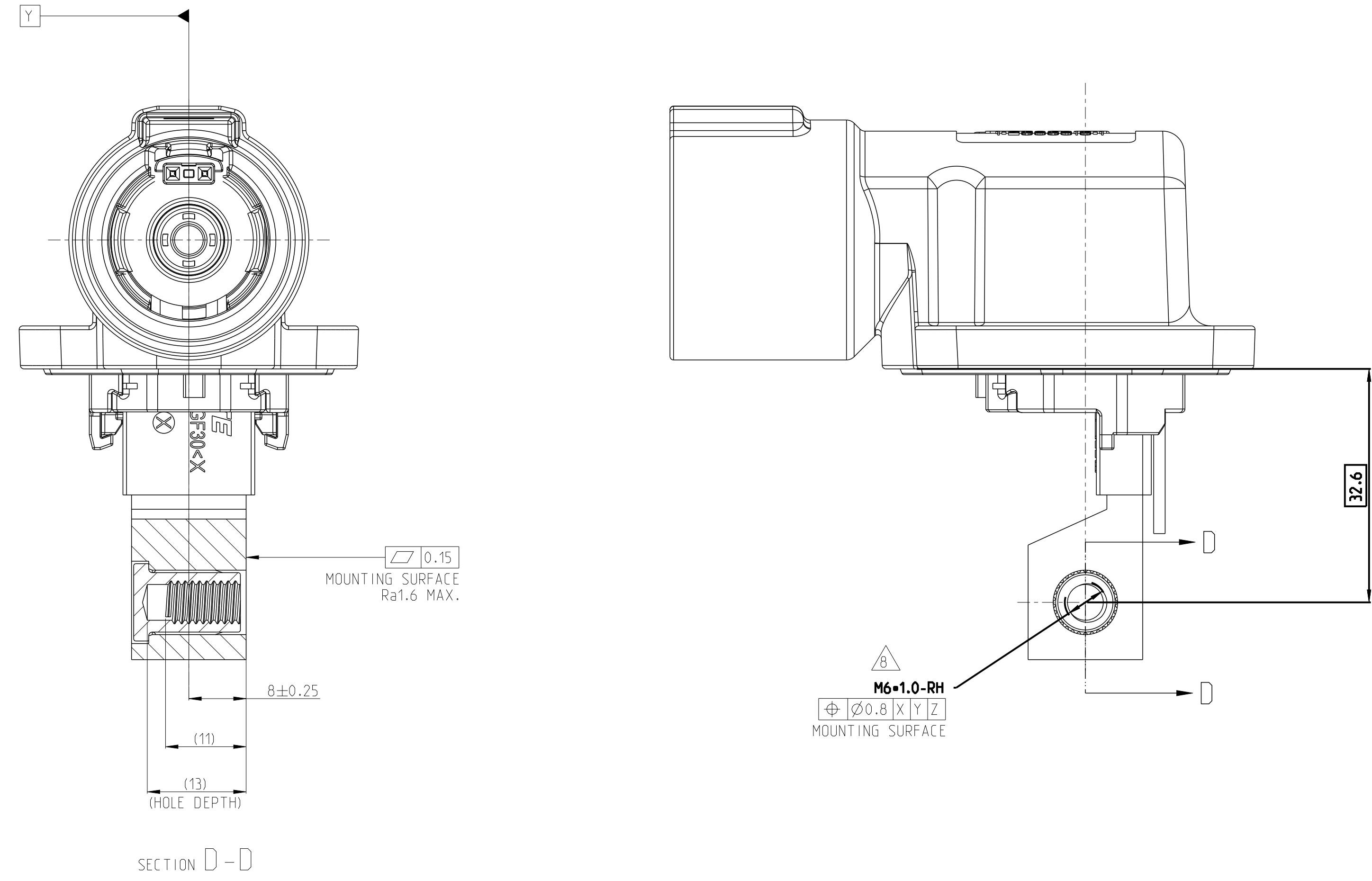
TE-ASSY-NO.	TE REV.	CODE	DESCRIPTION	DESCRIPTION	CODE	MATERIAL	SURFACE COLOR / TREATMENT	WEIGHT (g)	QTY	ITEM
1-2394070-3	C	M	1POS.PIN DIA 10.0 HDR ASSY.90DEG	CODE HOUSING FOLLOW 2394070-1	M	PA66-GF	AQUA RED	(165)	1	9
1-2394070-2	C	L	1POS.PIN DIA 10.0 HDR ASSY.90DEG	CODE HOUSING FOLLOW 2394070-1	L	PA66-GF	AQUA BROWN	(165)	1	9
1-2394070-1	C	K	1POS.PIN DIA 10.0 HDR ASSY.90DEG	CODE HOUSING FOLLOW 2394070-1	K	PA66-GF	AQUA GREEN	(165)	1	9
2394070-9	C	J	1POS.PIN DIA 10.0 HDR ASSY.90DEG	CODE HOUSING FOLLOW 2394070-1	J	PA66-GF	ORANGE	(165)	1	9
2394070-8	C	H	1POS.PIN DIA 10.0 HDR ASSY.90DEG	CODE HOUSING FOLLOW 2394070-1	H	PA66-GF	YELLOW	(165)	1	9
2394070-7	C	G	1POS.PIN DIA 10.0 HDR ASSY.90DEG	CODE HOUSING FOLLOW 2394070-1	G	PA66-GF	RED	(165)	1	9
2394070-6	C	F	1POS.PIN DIA 10.0 HDR ASSY.90DEG	CODE HOUSING FOLLOW 2394070-1	F	PA66-GF	BROWN	(165)	1	9
2394070-5	C	E	1POS.PIN DIA 10.0 HDR ASSY.90DEG	CODE HOUSING FOLLOW 2394070-1	E	PA66-GF	GREEN	(165)	1	9
2394070-4	C	D	1POS.PIN DIA 10.0 HDR ASSY.90DEG	CODE HOUSING FOLLOW 2394070-1	D	PA66-GF	PURPLE	(165)	1	9
2394070-3	C	C	1POS.PIN DIA 10.0 HDR ASSY.90DEG	CODE HOUSING FOLLOW 2394070-1	C	PA66-GF	BLUE	(165)	1	9
2394070-2	C	B	1POS.PIN DIA 10.0 HDR ASSY.90DEG	CODE HOUSING FOLLOW 2394070-1	B	PA66-GF	NATURE	(165)	1	9
2394070-1	C	A	1POS.PIN DIA 10.0 HDR ASSY.90DEG	CODE HOUSING	A	PA66-GF	BLACK	(165)	1	9
				HEADER TPA	-	PA66-GF	RED	-	1	8
				FINGER PROTECTION CAP	-	PA66	BLACK	-	1	7
				FACE SEAL	-	SILICONE	RED	-	1	6
				BUSBAR OVERMOLD FRONT SIDE	-	-	-	-	1	5
				OUTER HOUSING	-	PA66-GF	BLACK	-	1	4
				INNER HOUSING	-	PA66-GF	BLACK	-	1	3
				HWIL WIRE (LEWNI MOCAR 180 E 0.550MM WHITE ACCORDING TO LV112) WITH TERMINAL	-	-	WHITE	-	2	2
				HEADER HOUSING 90DEG.1POS	-	AL-ALLOY	PASSIVATION	-	1	1



- ① 1. SUITABLE COUNTERPART HVP-HD1000 PLUG SEE TE CONNECTIVITY PRODUCT DRAWING. TE-NO.: 2394115 AND 2411905
- ② CODING VARIANT
- ③ MOUNTING SPACE FOR HEADER
- ④ SEALING AREA: NO BURR, TOOL PARTING, SHRINKAGE, CAVITIES AND GATE MARKS PERMITTED. SURFACE ROUGHNESS: Ra=1.6
- ⑤ DRAFT ANGLE UP TO 0.5° PERMITTED
- ⑥ MOUNTING SCREW M6 (RECOMMENDED SCREW PLATING: ZINC-NICKEL). SCREW TYPE UP TO MANUFACTURER.
- ⑦ MATERIAL: CORROSION RESISTANT. ELECTROCONDUCTIVE
- ⑧ SCREW M6 FOR BUSBAR CONNECTION
- ⑨ ALL THREAD HOLES ARE BLIND HOLES
- ⑩ INTERFACE PANEL CODE SEE SHEET 5
- ⑪ LUBRICANT APPLIED ON THE RADIAL SEAL AREA AND CPA AREA
- ⑫ ASSEMBLY PN: X-XXXXXX-X  
ASSEMBLY REV: X  
DATE CODE: DWWYY

THIS DRAWING IS A CONTROLLED DOCUMENT.		DRAWN: N.SHI 26AUG2021	DATE: 26AUG2021	TE Connectivity
DIMENSIONS: DIMS		CHECKED: L.LL 26AUG2021	APPROVED: I.LYIN 26AUG2021	
MATERIAL: SEE TABLE		NO. OF PARTS: 11	NO. OF DRAWINGS: 11	NAME: 1POS.PIN DIA 10.0 HDR ASSY.90DEG HVP-HD1000 PART NO: 2394115 DRAWING NO: 2394070-1 SCALE: 1:1 SHEET: 1 OF 5

REVISIONS			
REV	DATE	BY	APPD
1			
SEE SHEET 1			



1.MISSING DIMENSION REFER TO 2394070-1

1.MISSING DIMENSION REFER TO 2394070-1

TE-ASSY-NO.	TE REV.	CODE	DESCRIPTION	DESCRIPTION	CODE	MATERIAL	PASSIVATION SURFACE COLOR /TREATMENT	WEIGHT (g)	QTY	ITEM
3-2394070-3	C	M	1POS.PIN DIA 10.0 HDR ASSY.90DEG	CODE HOUSING FOLLOW 2-2394070-1	M	PA66-GF	AQUA RED	(165)	1	9
3-2394070-2	C	L	1POS.PIN DIA 10.0 HDR ASSY.90DEG	CODE HOUSING FOLLOW 2-2394070-1	L	PA66-GF	AQUA BROWN	(165)	1	9
3-2394070-1	C	K	1POS.PIN DIA 10.0 HDR ASSY.90DEG	CODE HOUSING FOLLOW 2-2394070-1	K	PA66-GF	AQUA GREEN	(165)	1	9
2-2394070-9	C	J	1POS.PIN DIA 10.0 HDR ASSY.90DEG	CODE HOUSING FOLLOW 2-2394070-1	J	PA66-GF	ORANGE	(165)	1	9
2-2394070-8	C	H	1POS.PIN DIA 10.0 HDR ASSY.90DEG	CODE HOUSING FOLLOW 2-2394070-1	H	PA66-GF	YELLOW	(165)	1	9
2-2394070-7	C	G	1POS.PIN DIA 10.0 HDR ASSY.90DEG	CODE HOUSING FOLLOW 2-2394070-1	G	PA66-GF	RED	(165)	1	9
2-2394070-6	C	F	1POS.PIN DIA 10.0 HDR ASSY.90DEG	CODE HOUSING FOLLOW 2-2394070-1	F	PA66-GF	BROWN	(165)	1	9
2-2394070-5	C	E	1POS.PIN DIA 10.0 HDR ASSY.90DEG	CODE HOUSING FOLLOW 2-2394070-1	E	PA66-GF	GREEN	(165)	1	9
2-2394070-4	C	D	1POS.PIN DIA 10.0 HDR ASSY.90DEG	CODE HOUSING FOLLOW 2-2394070-1	D	PA66-GF	PURPLE	(165)	1	9
2-2394070-3	C	C	1POS.PIN DIA 10.0 HDR ASSY.90DEG	CODE HOUSING FOLLOW 2-2394070-1	C	PA66-GF	BLUE	(165)	1	9
2-2394070-2	C	B	1POS.PIN DIA 10.0 HDR ASSY.90DEG	CODE HOUSING FOLLOW 2-2394070-1	B	PA66-GF	NATURE	(165)	1	9
2-2394070-1	C	A	1POS.PIN DIA 10.0 HDR ASSY.90DEG	CODE HOUSING HEADER TPA FINGER PROTECTION CAP FACE SEAL BUSBAR OVERMOLD,RIGHT SIDE OUTER HOUSING INNER HOUSING HVIL WIRE (LEDN) MDCAR 180 E 0.550MM, WHITE ACCORDING TO LV112) WITH TERMINAL HEADER HOUSING 90DEG,1POS	A	PA66-GF PA66-GF PA66 SILICONE - PA66-GF PA66-GF - - AI-ALLOY	BLACK RED BLACK RED - BLACK BLACK - - PASSIVATION	(165)	1 1 1 1 1 1 2 1	9 8 7 6 5 4 3 2 1

TE-ASSY-NO.	TE REV.	CODE	DESCRIPTION	DESCRIPTION	CODE	MATERIAL	PASSIVATION SURFACE COLOR /TREATMENT	WEIGHT (g)	QTY	ITEM
5-2394070-3	C	M	1POS.PIN DIA 10.0 HDR ASSY.90DEG	CODE HOUSING FOLLOW 4-2394070-1	M	PA66-GF	AQUA RED	(165)	1	9
5-2394070-2	C	L	1POS.PIN DIA 10.0 HDR ASSY.90DEG	CODE HOUSING FOLLOW 4-2394070-1	L	PA66-GF	AQUA BROWN	(165)	1	9
5-2394070-1	C	K	1POS.PIN DIA 10.0 HDR ASSY.90DEG	CODE HOUSING FOLLOW 4-2394070-1	K	PA66-GF	AQUA GREEN	(165)	1	9
4-2394070-9	C	J	1POS.PIN DIA 10.0 HDR ASSY.90DEG	CODE HOUSING FOLLOW 4-2394070-1	J	PA66-GF	ORANGE	(165)	1	9
4-2394070-8	C	H	1POS.PIN DIA 10.0 HDR ASSY.90DEG	CODE HOUSING FOLLOW 4-2394070-1	H	PA66-GF	YELLOW	(165)	1	9
4-2394070-7	C	G	1POS.PIN DIA 10.0 HDR ASSY.90DEG	CODE HOUSING FOLLOW 4-2394070-1	G	PA66-GF	RED	(165)	1	9
4-2394070-6	C	F	1POS.PIN DIA 10.0 HDR ASSY.90DEG	CODE HOUSING FOLLOW 4-2394070-1	F	PA66-GF	BROWN	(165)	1	9
4-2394070-5	C	E	1POS.PIN DIA 10.0 HDR ASSY.90DEG	CODE HOUSING FOLLOW 4-2394070-1	E	PA66-GF	GREEN	(165)	1	9
4-2394070-4	C	D	1POS.PIN DIA 10.0 HDR ASSY.90DEG	CODE HOUSING FOLLOW 4-2394070-1	D	PA66-GF	PURPLE	(165)	1	9
4-2394070-3	C	C	1POS.PIN DIA 10.0 HDR ASSY.90DEG	CODE HOUSING FOLLOW 4-2394070-1	C	PA66-GF	BLUE	(165)	1	9
4-2394070-2	C	B	1POS.PIN DIA 10.0 HDR ASSY.90DEG	CODE HOUSING FOLLOW 4-2394070-1	B	PA66-GF	NATURE	(165)	1	9
4-2394070-1	C	A	1POS.PIN DIA 10.0 HDR ASSY.90DEG	CODE HOUSING HEADER TPA FINGER PROTECTION CAP FACE SEAL BUSBAR OVERMOLD,BACK SIDE OUTER HOUSING INNER HOUSING HVIL WIRE (LEDN) MDCAR 180 E 0.550MM, WHITE ACCORDING TO LV112) WITH TERMINAL HEADER HOUSING 90DEG,1POS	A	PA66-GF PA66-GF PA66 SILICONE - PA66-GF PA66-GF - - AI-ALLOY	BLACK RED BLACK RED - BLACK BLACK - - PASSIVATION	(165)	1 1 1 1 1 1 2 1	9 8 7 6 5 4 3 2 1

THIS DRAWING IS A CONTROLLED DOCUMENT.

DATE: 26AUG2021

TE Connectivity

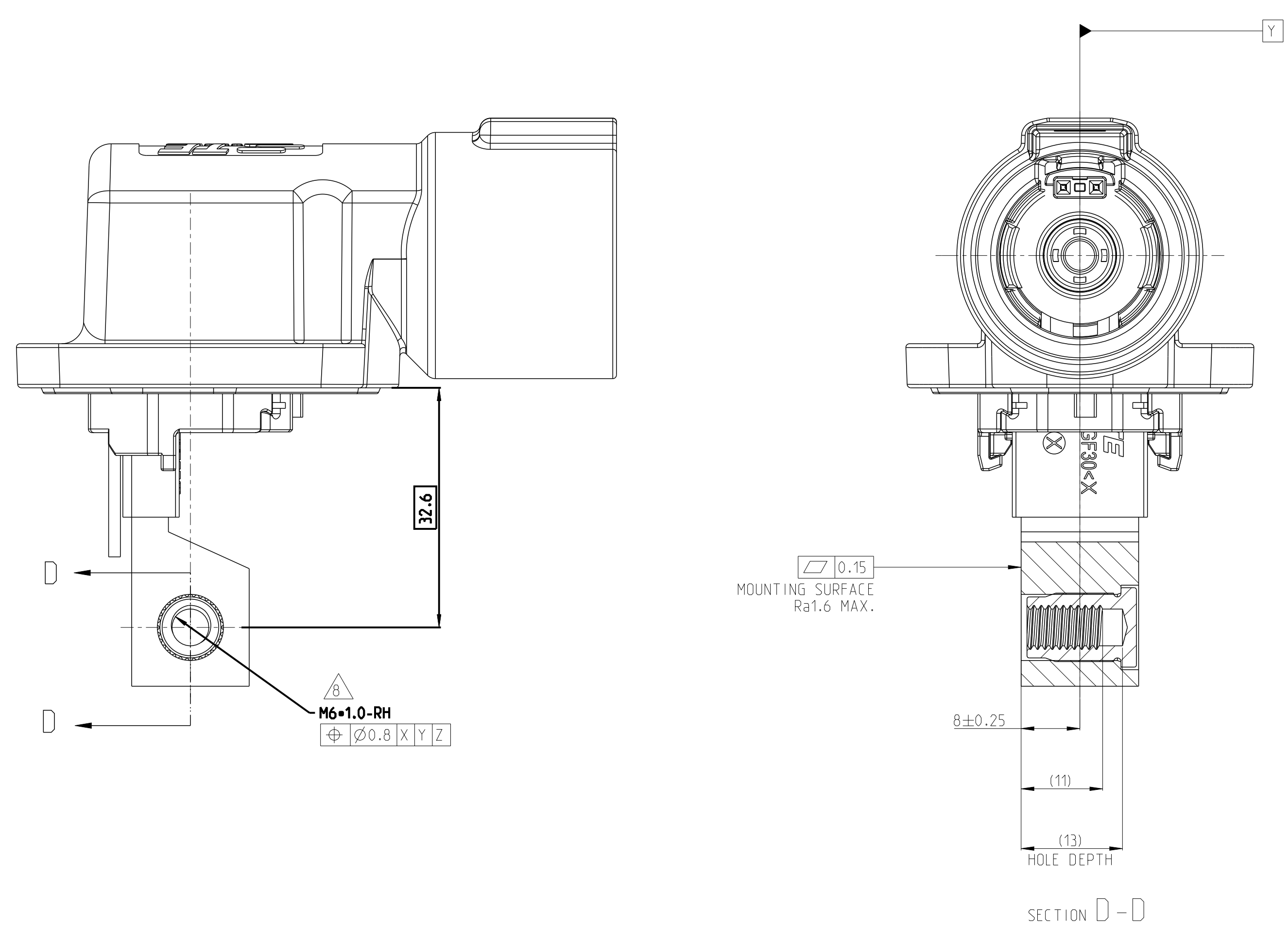
1POS.PIN DIA 10.0 HDR ASSY.90DEG HVP-HD1000

114-160181

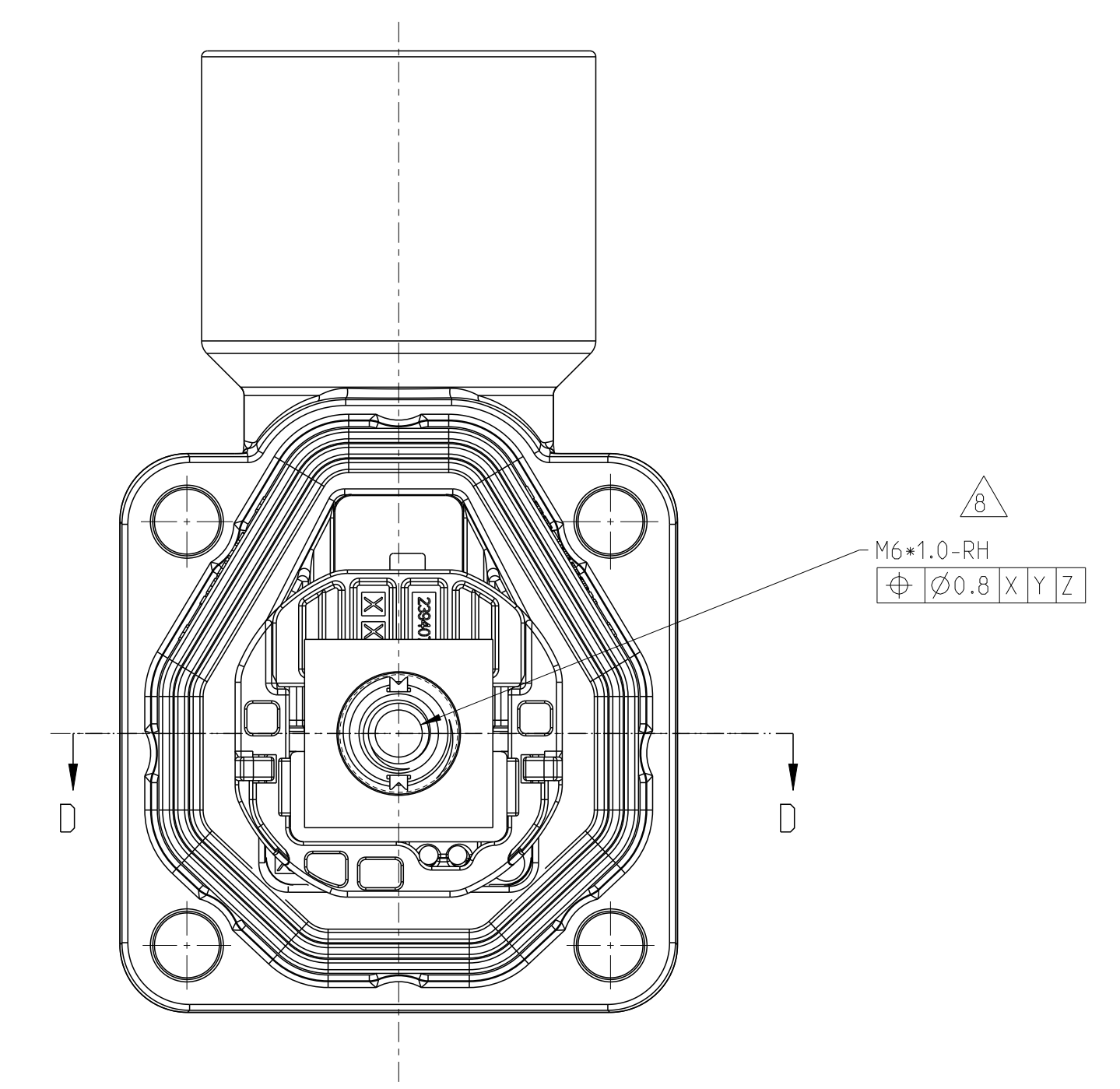
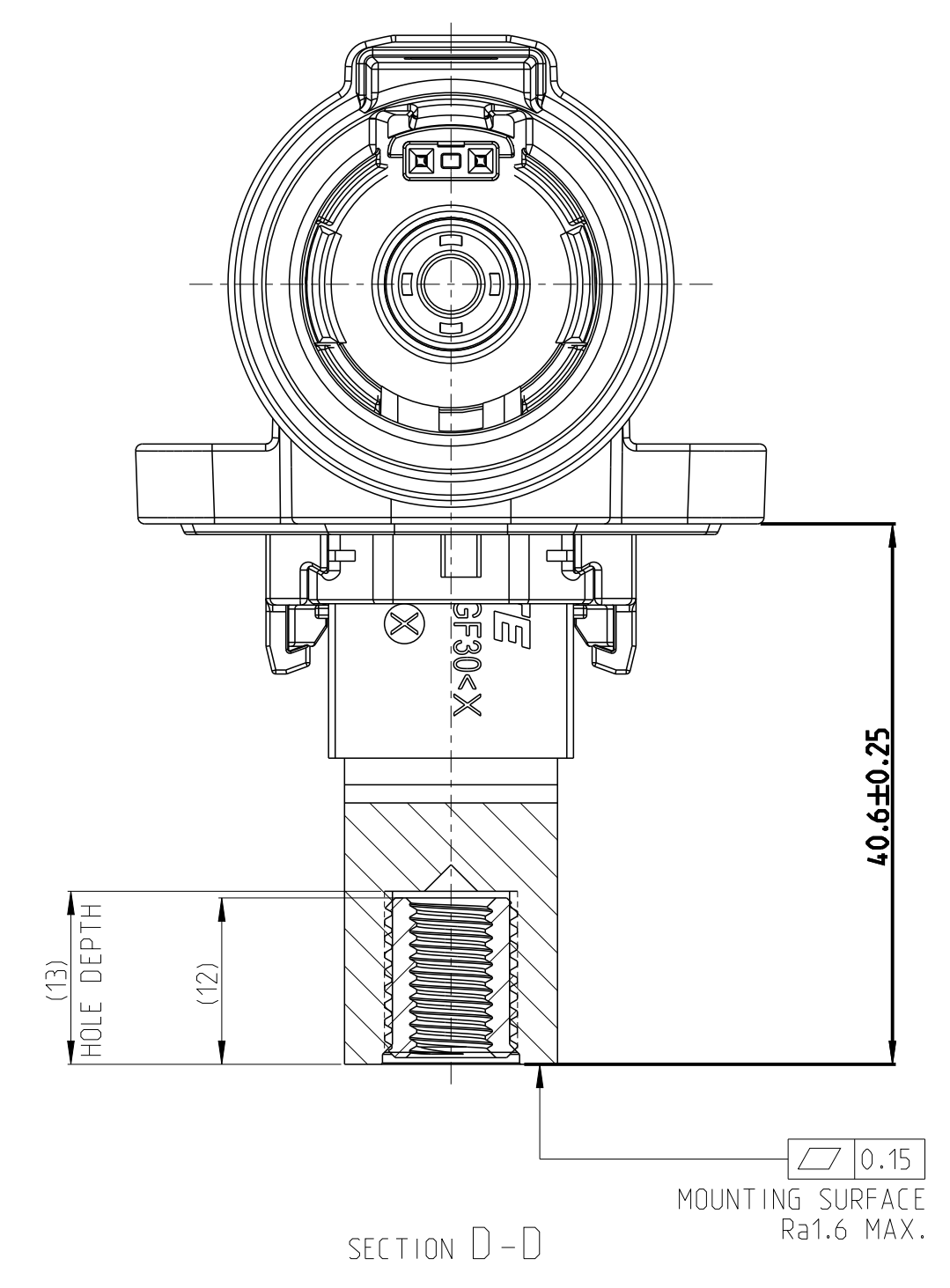
SCALE: 2:1

2 OF 5

REVISIONS			
REV	DATE	BY	APPD
1			
SEE SHEET 1			



1.MISSING DIMENSION REFER TO 2394070-1



1.MISSING DIMENSION REFER TO 2394070-1

TE-ASSY-NO.	TE REV.	CODE	DESCRIPTION	DESCRIPTION	CODE	MATERIAL	SURFACE COLOR /TREATMENT	WEIGHT (g)	QTY	ITEM
7-2394070-3	C	M	1POS.PIN DIA 10.0 HDR ASSY.90DEG	CODE HOUSING FOLLOW 6-2394070-1	M	PA66-GF	AQUA RED	(165)	1	9
7-2394070-2	C	L	1POS.PIN DIA 10.0 HDR ASSY.90DEG	CODE HOUSING FOLLOW 6-2394070-1	L	PA66-GF	AQUA BROWN	(165)	1	9
7-2394070-1	C	K	1POS.PIN DIA 10.0 HDR ASSY.90DEG	CODE HOUSING FOLLOW 6-2394070-1	K	PA66-GF	AQUA GREEN	(165)	1	9
6-2394070-9	C	J	1POS.PIN DIA 10.0 HDR ASSY.90DEG	CODE HOUSING FOLLOW 6-2394070-1	J	PA66-GF	ORANGE	(165)	1	9
6-2394070-8	C	H	1POS.PIN DIA 10.0 HDR ASSY.90DEG	CODE HOUSING FOLLOW 6-2394070-1	H	PA66-GF	YELLOW	(165)	1	9
6-2394070-7	C	G	1POS.PIN DIA 10.0 HDR ASSY.90DEG	CODE HOUSING FOLLOW 6-2394070-1	G	PA66-GF	RED	(165)	1	9
6-2394070-6	C	F	1POS.PIN DIA 10.0 HDR ASSY.90DEG	CODE HOUSING FOLLOW 6-2394070-1	F	PA66-GF	BROWN	(165)	1	9
6-2394070-5	C	E	1POS.PIN DIA 10.0 HDR ASSY.90DEG	CODE HOUSING FOLLOW 6-2394070-1	E	PA66-GF	GREEN	(165)	1	9
6-2394070-4	C	D	1POS.PIN DIA 10.0 HDR ASSY.90DEG	CODE HOUSING FOLLOW 6-2394070-1	D	PA66-GF	PURPLE	(165)	1	9
6-2394070-3	C	C	1POS.PIN DIA 10.0 HDR ASSY.90DEG	CODE HOUSING FOLLOW 6-2394070-1	C	PA66-GF	BLUE	(165)	1	9
6-2394070-2	C	B	1POS.PIN DIA 10.0 HDR ASSY.90DEG	CODE HOUSING FOLLOW 6-2394070-1	B	PA66-GF	NATURE	(165)	1	9
6-2394070-1	C	A	1POS.PIN DIA 10.0 HDR ASSY.90DEG	CODE HOUSING	A	PA66-GF	BLACK	(165)	1	9
				HEADER TPA	-	PA66-GF	RED	-	1	8
				FINGER PROTECTION CAP	-	PA66	BLACK	-	1	7
				FACE SEAL	-	SILICONE	RED	-	1	6
				BUSBAR OVERMOLD LEFT SIDE	-	-	-	-	1	5
				OUTER HOUSING	-	PA66-GF	BLACK	-	1	4
				INNER HOUSING	-	PA66-GF	BLACK	-	1	3
				HVIL WIRE (LEON) MOCAR 180 E 0.5SDMM. WHITE ACCORDING TO LV112) WITH TERMINAL	-	-	-	-	2	2
				HEADER HOUSING 90DEG.1POS	-	AL-ALLOY	PASSIVATION	-	1	1
				TE-ASSY-NO.	TE REV.	CODE	DESCRIPTION	DESCRIPTION	CODE	MATERIAL

9-2394070-3	C	M	1POS.PIN DIA 10.0 HDR ASSY.90DEG	CODE HOUSING FOLLOW 6-2394070-1	M	PA66-GF	AQUA RED	(165)	1	9
9-2394070-2	C	L	1POS.PIN DIA 10.0 HDR ASSY.90DEG	CODE HOUSING FOLLOW 6-2394070-1	L	PA66-GF	AQUA BROWN	(165)	1	9
9-2394070-1	C	K	1POS.PIN DIA 10.0 HDR ASSY.90DEG	CODE HOUSING FOLLOW 6-2394070-1	K	PA66-GF	AQUA GREEN	(165)	1	9
8-2394070-9	C	J	1POS.PIN DIA 10.0 HDR ASSY.90DEG	CODE HOUSING FOLLOW 6-2394070-1	J	PA66-GF	ORANGE	(165)	1	9
8-2394070-8	C	H	1POS.PIN DIA 10.0 HDR ASSY.90DEG	CODE HOUSING FOLLOW 6-2394070-1	H	PA66-GF	YELLOW	(165)	1	9
8-2394070-7	C	G	1POS.PIN DIA 10.0 HDR ASSY.90DEG	CODE HOUSING FOLLOW 6-2394070-1	G	PA66-GF	RED	(165)	1	9
8-2394070-6	C	F	1POS.PIN DIA 10.0 HDR ASSY.90DEG	CODE HOUSING FOLLOW 6-2394070-1	F	PA66-GF	BROWN	(165)	1	9
8-2394070-5	C	E	1POS.PIN DIA 10.0 HDR ASSY.90DEG	CODE HOUSING FOLLOW 6-2394070-1	E	PA66-GF	GREEN	(165)	1	9
8-2394070-4	C	D	1POS.PIN DIA 10.0 HDR ASSY.90DEG	CODE HOUSING FOLLOW 6-2394070-1	D	PA66-GF	PURPLE	(165)	1	9
8-2394070-3	C	C	1POS.PIN DIA 10.0 HDR ASSY.90DEG	CODE HOUSING FOLLOW 6-2394070-1	C	PA66-GF	BLUE	(165)	1	9
8-2394070-2	C	B	1POS.PIN DIA 10.0 HDR ASSY.90DEG	CODE HOUSING FOLLOW 6-2394070-1	B	PA66-GF	NATURE	(165)	1	9
8-2394070-1	C	A	1POS.PIN DIA 10.0 HDR ASSY.90DEG	CODE HOUSING	A	PA66-GF	BLACK	(165)	1	9
				HEADER TPA	-	PA66-GF	RED	-	1	8
				FINGER PROTECTION CAP	-	PA66	BLACK	-	1	7
				FACE SEAL	-	SILICONE	RED	-	1	6
				BUSBAR OVERMOLD TOP SIDE	-	-	-	-	1	5
				OUTER HOUSING	-	PA66-GF	BLACK	-	1	4
				INNER HOUSING	-	PA66-GF	BLACK	-	1	3
				HVIL WIRE (LEON) MOCAR 180 E 0.5SDMM. WHITE ACCORDING TO LV112) WITH TERMINAL	-	-	-	-	2	2
				HEADER HOUSING 90DEG.1POS	-	AL-ALLOY	PASSIVATION	-	1	1
				TE-ASSY-NO.	TE REV.	CODE	DESCRIPTION	DESCRIPTION	CODE	MATERIAL

THIS DRAWING IS A CONTROLLED DOCUMENT.

DATE: 26AUG2021

BY: N.SHI

CHK: L.L.

APPROV: 26AUG2021

TE Connectivity

1POS.PIN DIA 10.0 HDR ASSY.90DEG

HVP-HD1000

108-160341

14-160181

00779

SCALE: 2:1

SHEET 3 OF 5

REV C

REVISIONS			
REV	DATE	BY	APPD
1			
SEE SHEET 1			

TABLE 5

CODE A	CODE B	CODE C	CODE D
CODE E	CODE F	CODE G	CODE H
CODE J	CODE K	CODE L	CODE M

THIS DRAWING IS A CONTROLLED DOCUMENT.

DATE	26AUG2021	BY	SHI
CHK	26AUG2021	APPD	LL
DATE	26AUG2021	DATE	26AUG2021

DIMENSIONS: UNLESS OTHERWISE SPECIFIED  
 DIM: INCHES  
 TYP: DECIMALS  
 FIN: 0.005  
 1. FRACTIONAL DECIMALS  
 2. DECIMALS  
 3. DECIMALS  
 4. DECIMALS  
 5. DECIMALS  
 6. DECIMALS  
 7. DECIMALS  
 8. DECIMALS  
 9. DECIMALS  
 10. DECIMALS  
 11. DECIMALS  
 12. DECIMALS  
 13. DECIMALS  
 14. DECIMALS  
 15. DECIMALS  
 16. DECIMALS  
 17. DECIMALS  
 18. DECIMALS  
 19. DECIMALS  
 20. DECIMALS  
 21. DECIMALS  
 22. DECIMALS  
 23. DECIMALS  
 24. DECIMALS  
 25. DECIMALS  
 26. DECIMALS  
 27. DECIMALS  
 28. DECIMALS  
 29. DECIMALS  
 30. DECIMALS  
 31. DECIMALS  
 32. DECIMALS  
 33. DECIMALS  
 34. DECIMALS  
 35. DECIMALS  
 36. DECIMALS  
 37. DECIMALS  
 38. DECIMALS  
 39. DECIMALS  
 40. DECIMALS  
 41. DECIMALS  
 42. DECIMALS  
 43. DECIMALS  
 44. DECIMALS  
 45. DECIMALS  
 46. DECIMALS  
 47. DECIMALS  
 48. DECIMALS  
 49. DECIMALS  
 50. DECIMALS  
 51. DECIMALS  
 52. DECIMALS  
 53. DECIMALS  
 54. DECIMALS  
 55. DECIMALS  
 56. DECIMALS  
 57. DECIMALS  
 58. DECIMALS  
 59. DECIMALS  
 60. DECIMALS  
 61. DECIMALS  
 62. DECIMALS  
 63. DECIMALS  
 64. DECIMALS  
 65. DECIMALS  
 66. DECIMALS  
 67. DECIMALS  
 68. DECIMALS  
 69. DECIMALS  
 70. DECIMALS  
 71. DECIMALS  
 72. DECIMALS  
 73. DECIMALS  
 74. DECIMALS  
 75. DECIMALS  
 76. DECIMALS  
 77. DECIMALS  
 78. DECIMALS  
 79. DECIMALS  
 80. DECIMALS  
 81. DECIMALS  
 82. DECIMALS  
 83. DECIMALS  
 84. DECIMALS  
 85. DECIMALS  
 86. DECIMALS  
 87. DECIMALS  
 88. DECIMALS  
 89. DECIMALS  
 90. DECIMALS  
 91. DECIMALS  
 92. DECIMALS  
 93. DECIMALS  
 94. DECIMALS  
 95. DECIMALS  
 96. DECIMALS  
 97. DECIMALS  
 98. DECIMALS  
 99. DECIMALS  
 100. DECIMALS

MATERIAL: SEE TABLE  
 WEIGHT: SEE TABLE  
 CUSTOMER DRAWING: A000779  
 SCALE: 2:1  
 SHEET: 6 OF 5  
 REV: C

**STE** TE Connectivity  
 NAME: 1POS.PIN DIA 10.0 HDR ASSY.90DEG  
 HVP-HD1000  
 PRODUCT SPEC: 108-160341  
 APPLICATION SPEC: 114-160181  
 DATE: 26AUG2021  
 CASE CODE: 2394070  
 RESTRICTED TO:

REVISIONS			
NO.	DATE	DESCRIPTION	BY
1		SEE SHEET 1	

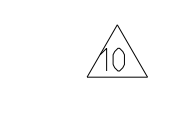


TABLE 6

CODE A	CODE B	CODE C	CODE D
CODE E	CODE F	CODE G	CODE H
CODE J	CODE K	CODE L	CODE M

THIS DRAWING IS A CONTROLLED DOCUMENT.		DATE: 26AUG2021		TE Connectivity	
DESIGNED BY: JLS	CHECKED BY: JLS	DATE: 26AUG2021		PART NAME: 1POS.PIN D1A 10.0 HDR ASSY.90DEG HVP-HD1000	
DRAWN BY: JLS	APPROVED BY: JLS	DATE: 26AUG2021	PRODUCT SPEC: 108-160341	SIZE: A0	CASE CODE: 00779
MATERIAL: SEE TABLE	WEIGHT: SEE TABLE	SCALE: 2:1	APPLICATION SPEC: 114-160181	SHEET: 5	REV: C
CUSTOMER DRAWING			RESTRICTED TO:		