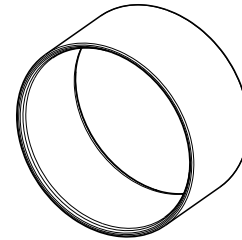
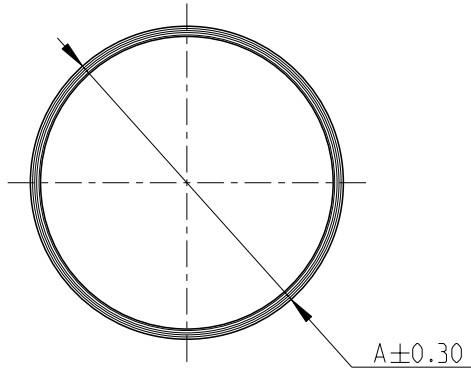


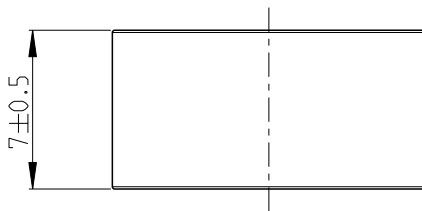
printed on 2 Nov 2022 08:42 (China Standard Time) from TE424490

© 2021 TE Connectivity. All Rights Reserved.

REVISIONS					
P	LTR	DESCRIPTION	DATE	DWN	APVD
	A	INITIAL RELEASE	27OCT2022	E.C	Z.Z



SCALE 2:1



1. MATERIAL: STAINLESS STEEL

2. FINISH: BARE

3. PARTS MUST FREE OF BURRS, CRACKS, OR OTHER VISUAL IMPERFECTIONS THAT MAY AFFECT FIT FORM OR FUNCTION

Ø13.8	FOR 3X6SQM ISO H+S	2392553-4
Ø12.1	FOR 2X6SQM ISO H+S	2392553-3
Ø11.8	FOR 3X4SQM ISO H+S FOR 2X4SQM ISO H+S	2392553-2
Ø9.7	FOR 3X2.5SQM ISO H+S FOR 2X2.5SQM ISO H+S	2392553-1
DIM A	DESCRIPTION	PART NO.

DIMENSIONS: mm	DWN E.CHEN	21OCT2022	MATERIAL	1	FINISH	2	
	CHK J.LI	22OCT2022	TE Connectivity				
TOLERANCES UNLESS OTHERWISE SPECIFIED:	APVD Z.ZHOU	22OCT2022					NAME INNER FERRULE HVA HD400 MULTIPLE CORE PLUG
	0 PLC ± 1 PLC ± 2 PLC ± 3 PLC ± 4 PLC ± ANGLES ±	PRODUCT SPEC 108-160599	APPLICATION SPEC 114-160337	SIZE A 4	CAGE CODE 00779	DRAWING NO C=2392553	RESTRICTED TO -
	WEIGHT -		CUSTOMER DRAWING		SCALE 2:1	SHEET 1 OF 1	REV A