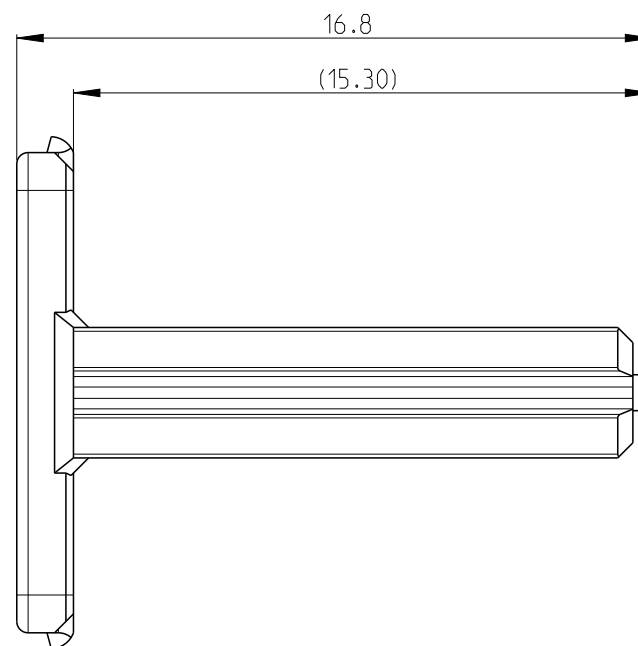
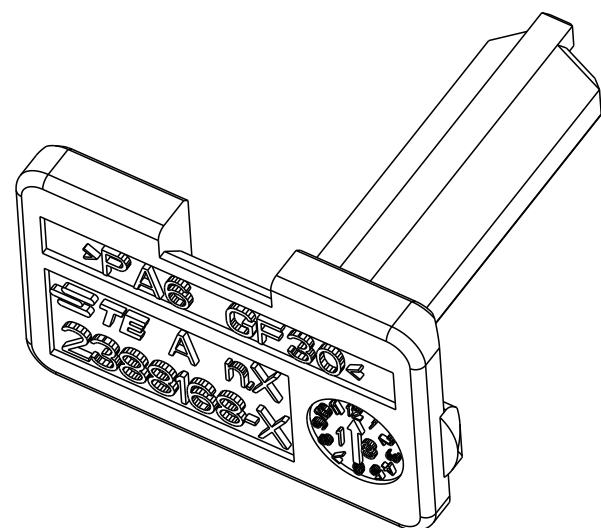
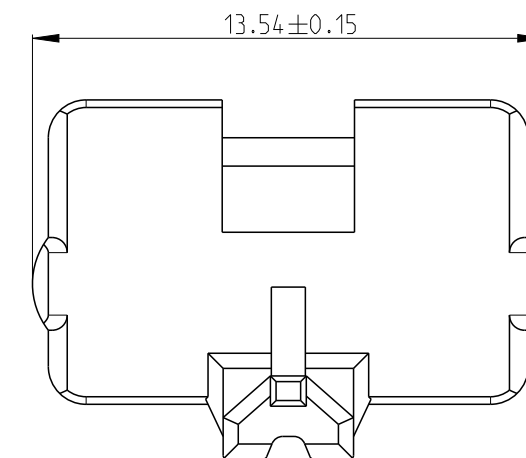
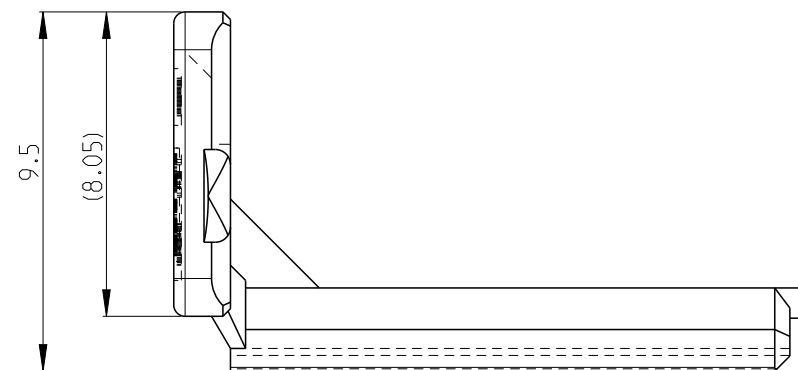
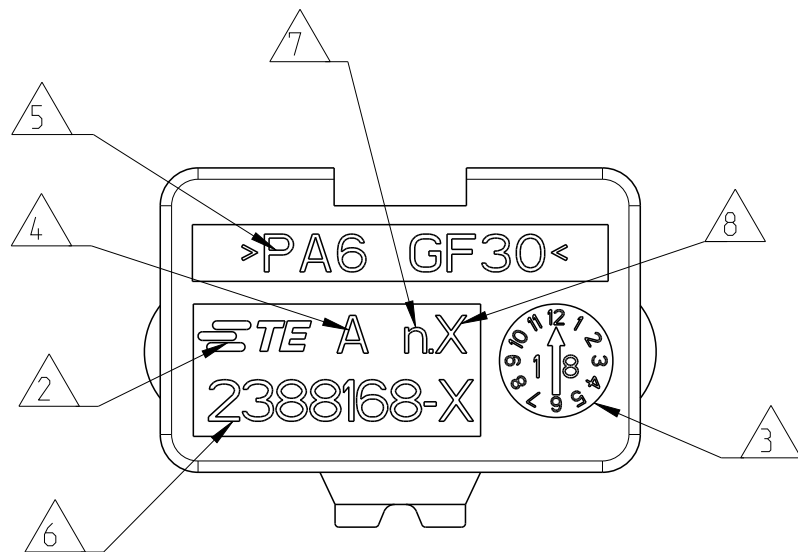


P	LTR	DESCRIPTION	DATE	DWN	APVD
	A	INITIAL RELEASE	01MAR2022	W.W	Z.Z



NOTES.

1. THIS SECONDARY LOCKING DEVICE MATES WITH MCP 4POS HOUSING, SEE DRAWING 2388170, 2388171.

- △ 2 TE LOGO.
- △ 3 MAKING DATE.
- △ 4 PART REVISION, ACTUAL STATUS ACC.TO TABLE
- △ 5 MATERIAL-MARKING.
- △ 6 TE PART NUMBER (X = 1,2,3,4...).
- △ 7 TOOL NUMBERING (n=1,2...).
- △ 8 MOLD CAVITY MARK (X=1,2,3,4...).

2388168-1	YELLOW	PA6-GF30	1
PART NO	COLOUR	MATERIAL	ITEM

THIS DRAWING IS A CONTROLLED DOCUMENT.		DWN W.WANG	01MAR2022	TE Connectivity	
DIMENSIONS: mm		CHK C.WAN	01MAR2022		
TOLERANCES UNLESS OTHERWISE SPECIFIED:		APVD Z.ZHOU	01MAR2022	NAME MCP6.3 4P TPA	
0 PLC ±0.5 1 PLC ±0.4 2 PLC ±0.30 3 PLC ± 4 PLC ± ANGLES ±		PRODUCT SPEC 108-94718		RESTRICTED TO	
MATERIAL SEE TABLE		APPLICATION SPEC -		SIZE A3	CAGE CODE 00779
FINISH -		WEIGHT -		DRAWING NO C=2388168	
-		CUSTOMER DRAWING		SCALE 5:1	SHEET 1 OF 1
-		-		REV A	