

P	LTR	DESCRIPTION	DATE	DWN	APVD
	A1	SEE SHEET 3	05NOV2022	RL	WY

LABELS

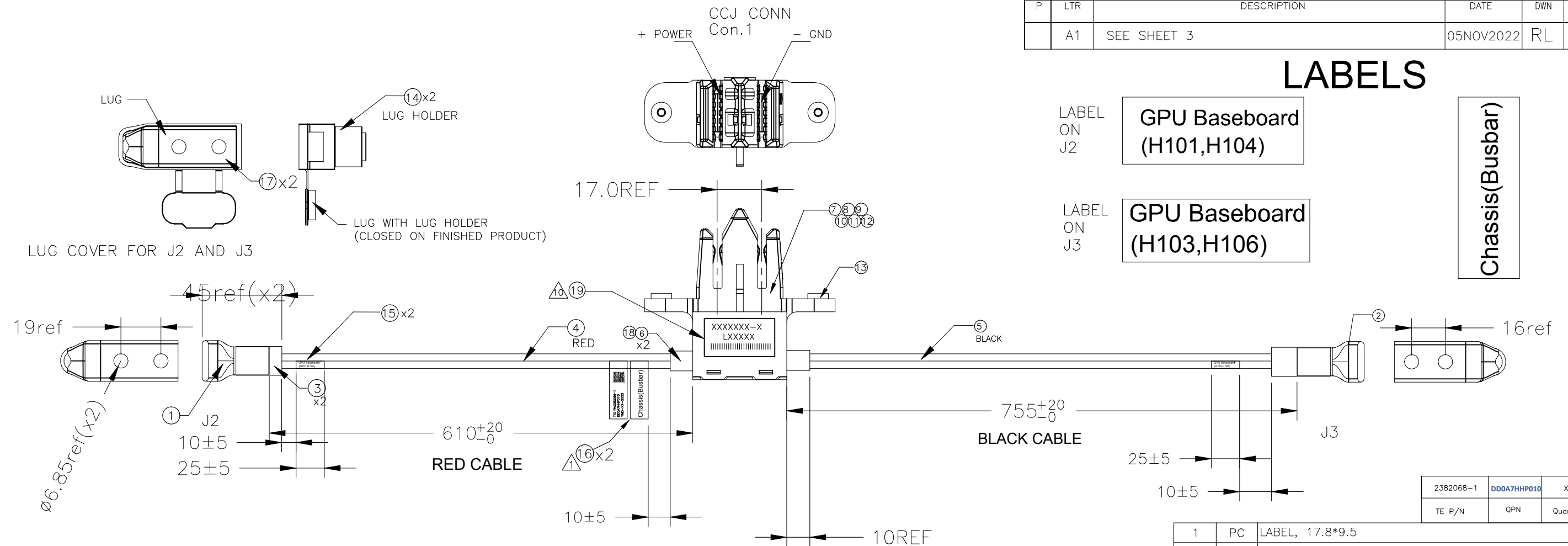
LABEL
ON
J2

GPU Baseboard
(H101,H104)

LABEL
ON
J3

GPU Baseboard
(H103,H106)

Chassis(Busbar)



NOTES:

△1 THE MARKING TEXT AS FOLLOWS:

TE PN	TYC PN:2382068-1
QPN	DD0A7HHP010
1.0C DAY 1xv	YMD-XX-SSSS



— QR COD READING AS
TYCDD0A7HHP010YMDXXSSSS

YMD: YEAR 0~9, MONTH 1~C, DAY 1~V
XX: QUANTA REV.
SSSS: SERIAL NO 0001~ZZZZ

2. 100% ELECTRICAL TEST FOR CONTINUITY, OPENS AND SHORTS, HI-POT.
3. ADD SILVER CAUTION LABEL TO CARTON
4. SILVER PLATED CONTACT MAY DISCOLOR IN AIR, BUT NO PERFORMANCE ISSUE.
5. THE POWER PIN LOAD CURRENT: 35A/PIN MAX PER PIN AT ROOM TEMPERATURE.
6. CONDUCTOR RESISTANCE: 2 ohm max
7. INSULATION RESISTANCE: 10M ohm min/300V DC,10ms
8. 100% OPEN,SHORT&INTERMITANCE TEST
9. All material and process must be meet the requirement of RoHS.

10. SERIALIZATION LABEL, PASTE ON THE CONNECTOR SURFACE AS SHOWN

XXXXXXXX-X
LXXXXX
||||||||||||

TE P/N
LOCATION CODE L=("D" FOR DGN OR "A" FOR MEXICO), SERIES NUMBER
BARCODE READ AS TE P/N, LOCATION CODE AND SERIES NUMBER

tolerance table	
RANGE	TOLERANCE
0-10	0.10
10-50	0.15
50-100	0.20
100-	0.25

FROM	WIRE	TO
Con.1 + POWER	8AWG, RED	J2
	8AWG, RED	
	8AWG, RED	
	8AWG, RED	
Con.1 - GND	8AWG, BLACK	J3
	8AWG, BLACK	
	8AWG, BLACK	
	8AWG, BLACK	

THIS DRAWING IS A CONTROLLED DOCUMENT.

DWN	02NOV2020
KUSHVANTH V	

CHK	-
-----	---

APVD	02NOV2020
------	-----------

NAME	WILLIAM YAO
------	-------------

PRODUCT SPEC

APPLICATION SPEC

APPLICATION SPEC

	WEIGHT
--	--------

[illegible]

CUSTOMER DRAWING

355


TE Connectivity

NAME

NAME	Quanta A7H Busbar Cable 1
------	---------------------------

[illegible]

SIZE	CAGE CODE	DRAWING NO	RESTRICTED TO
------	-----------	------------	---------------

A 7 00370 C-2382068

A5	00779	G=2382060	—
----	-------	-----------	---

SCALE	NTS	SHEET	1 OF 3	REV	A1
-------	-----	-------	--------	-----	----


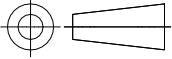
REVISIONS					
P	LTR	DESCRIPTION	DATE	DWN	APVD
	—	SEE SHEET 1	—	—	—

NOTES :

- 1 . INTERPRET DIMENSIONS PER ASME Y14.5 M-2009.
- 2 . THE MATERIALS AND MANUFACTURING METHODS USED IN THE FABRICATION OF THIS PART OR ASSEMBLY MUST COMPLY WITH QUANTA ENVIRONMENTAL (RoHS) SPECIFICATION.
- 3 . ALL DIMENSIONS SHOWN SHALL BE CHECKED DURING FIRST ARTICLE INSPECTION. FAI MUST BE APPROVED FOR THE SPECIFIC REVISION OF THIS PART PRIOR TO SHIPMENT OF PARTS TO QUANTA, QUANTA'S SUBCONTRACTORS.
- 4 . DRAWING FOR INSPECTION PURPOSES ONLY.UNLESS OTHERWISE SPECIFIED, SHOWN DIMENSIONS SHALL CONFORM TO THE TOLERANCE IN THE TABLE. ALL DIMENSIONS NOT SHOWN SHALL CONFORM TO THE SINGLE PLACE DECIMAL TOLERANCES IN TABLE.


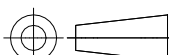
X

CRITICAL TO FUNCTION DIMENSION: THESE DIMENSIONS SHALL BE USED FOR DETERMINATION AND QUALIFICATION OF PROCESS CAPABILITY (Cp, Cpk) PER THE QUANTA PPAP PROCESS.THE RANGE OF CABLE CTF DIMENSIONS INCLUDES THE FOLLOWING BUT SHOULD NOT BE LIMITED, SUCH AS LENGTH, BENDING SIZE, CONNECTOR SIZE, CONNECTOR LOCKING PRESSED AND RELEASE POSITIONS, CONNECTOR HOUSING FLATNESS ..etc.
- 5 . PARTS ARE TO BE CLEAN AND FREE FROM FOREIGN MATERIAL. DIRT, OIL, GREASE, OR OTHER CONTAMINANTS ARE NOT ALLOWED.
- 6 . ALL WIRING MUST BE CSA CERTIFIED AND UL RECOGNIZED COMPONENTS IN CATEGORY AVL2, AWM RATED MINIMUM 80 DEGREE,MINIMUM FLAMMABILITY RATING OF VW-1.
- 7 . THE CONNECTORS USED MUST BE CSA CERTIFIED AND UL RECOGNIZED COMPONENTS IN CATEGORY RTRT2, ECBT2, OR DUXR2. COMPONENTS MUST MEET A MINIMUM FLAMMABILITY RATING OF 94V-0.
- 8 . ALL OTHER PLASTICS USED MUST MEET A MINIMUM FLAMMABILITY RATING OF 94V-1.
- 9 . THE VENDOR SHALL BE A UL RECOGNIZED AND CSA CERTIFIED SUPPLIER OF WIRING HARNESSSES. THE VENDORS UL RECOGNITION MARK AND CSA CERTIFICATION MARK SHALL BE APPLIED TO THE SMALLEST BUNDLE OR UNIT CONTAINER IN WHICH THE PRODUCT IS PACKAGED.
- 10 . LOCKING FORCE SHOULD BE (XXXX) KGF-CM WHEN CABLE LATCH LOCKED AT ITS MATING CONNECTOR AFTER (XX) CYCLES PLUG-UNPLUG FROM ITS MATING CONNECTOR. (30 CYCLES IS QUANTA SPEC). TEST DATA TO BE PROVIDED AT PPAP BY SUPPLIER ACCORDING EIA-364-38. (TABLE . 1)
- 11 . ALL CABLE CONNECTIONS TO USE LOCKING OR LATCHING CONNECTORS, MUST HAVE EXTRACTION AND LATCHING FEATURES THAT ASSURE AND MAINTAIN FULL INSERTION AND CONNECTIVITY, ALSO WITHOUT INTERFERENCE WITH ITS MATING CONNECTOR AND OTHER SURROUNDING COMPONENTS. IN ORDER TO PASS SHOCK & VIBRATION, LATCHING CONNECTORS ARE REQUIRED, CABLE LATCH'S CTF DIMENSIONS AND ITS TOLERANCE SHOULD BE IDENTIFIED ON 2D DRAWING FOR INSPECTION AND QUALITY CONTROL IN PRODUCTION.
- 12 . ALL SYSTEM CONNECTORS, INCLUDING PWA's, ARE HAVE ADEQUATE INHERENT STRUCTURAL INTEGRITY AND/OR INTEGRATED SUPPORT TO PREVENT DAMAGE, DEFORMATION OR EXCESSIVE STRESS FORM FORCES APPLIED DURING ASSEMBLY. (FOR EXAMPLE : 25-35 LBS. OF FORCE CAN BE TYPICAL FOR CABLE CONNECTIONS)
- 13 . ALL PURCHASE PARTS (ISOLATION FILM/LABEL/CONDUCTIVE TAPE/ACETATE TAPE ETC.) SHALL BE DEFINED SPECIFIC MATERIAL.

THIS DRAWING IS A CONTROLLED DOCUMENT.		DWN KUSHVANTH V 02NOV2020		<div> TE Connectivity</div>			
		CHK —					
DIMENSIONS: mm		TOLERANCES UNLESS OTHERWISE SPECIFIED:		APVD WILLIAM YAO 02NOV2020		NAME Quanta A7H Busbar Cable 1	
		0 PLC ± — 1 PLC ± — 2 PLC ± — 3 PLC ± — 4 PLC ± — ANGLES ± —		PRODUCT SPEC —		—	
				APPLICATION SPEC —		—	
MATERIAL —		FINISH —		WEIGHT —		SIZE A3	
CUSTOMER DRAWING				CAGE CODE 00779		DRAWING NO C-2382068	
				RESTRICTED TO —			
				SCALE NTS		SHEET 2 OF 3	
				REV A1			

REVISIONS					
P	LTR	DESCRIPTION	DATE	DWN	APVD
	—	SEE SHEET 1	—	—	—

2382068				
REVISION HISTORY				
DATE	REV	CHANGES	REASON	APPROVAL
25MAY2021	10	CHANGED ITEM 16	DESIGN UPDATE	KY/WY
16JUN2022	11	ADDED TRACEABILITY LABEL ITEM 19, NOTE 10	INTERNAL REQ	GA/WY
13OCT2022	A	GTP - AS PER ECN-22-179365	INTERNAL REQ	RL/WY
05NOV2022	A1	REV AND REV TABLE UPDATED AS PER ECN-22-183038	INTERNAL REQ	RL/WY

THIS DRAWING IS A CONTROLLED DOCUMENT.		DWN KUSHVANTH V CHK —	02NOV2020		 TE Connectivity				
DIMENSIONS: mm		TOLERANCES UNLESS OTHERWISE SPECIFIED:		APVD WILLIAM YAO PRODUCT SPEC — APPLICATION SPEC — WEIGHT —	NAME Quanta A7H Busbar Cable 1 — — SIZE A3 CAGE CODE 00779 DRAWING NO C-2382068 RESTRICTED TO —				
		0 PLC ± — 1 PLC ± — 2 PLC ± — 3 PLC ± — 4 PLC ± — ANGLES ± —							
MATERIAL —		FINISH —		CUSTOMER DRAWING			SCALE NTS	SHEET 3 of 3	REV A1