

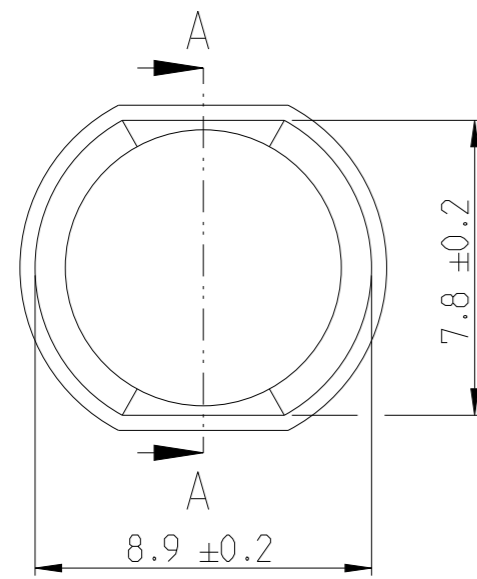
P	LTR	DESCRIPTION	DATE	DWN	APVD
	A	NEW DRAWING	22FEB2021	HPS	JB
	A1	RELEASE PER ECN-23-203432	16MAR2023	BP	DS
	A2	RELEASE PER ECR-23-170948	31MAR2023	BP	DS
	B	SEE ECN-23-219984	30JUN2023	VP	WRJ

NOTES
Bemerkungen

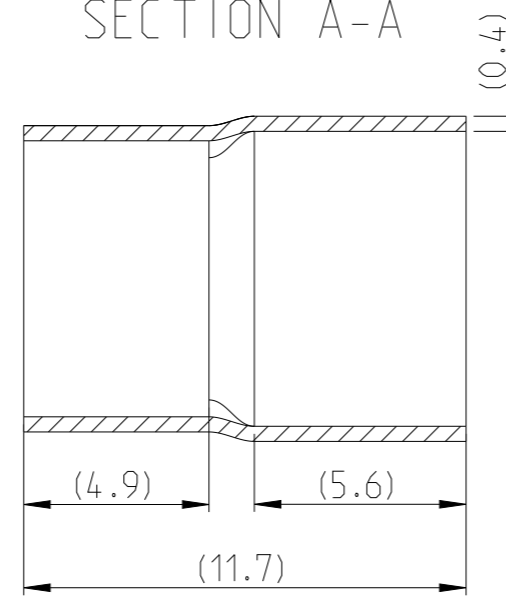
- PACKAGING LOOSE PIECE IN POLYBAG
Verpackung Schuettgut im PE Beutel
- SUITABLE FOR CABLE: G&G 2SPEED 233 AND CCC 19054 (9-2370624-1)
OR CCC 17753 (9-2370624-2)
Dassend fuer Kabel: G&G 2Speed 233 und CCC 19054 (9-2370624-1),
oder CCC 17753 (9-2370624-2)

3 MATERIAL
GENERIC BASE MATERIAL: COPPER ALLOY
PLATING: TIN

4 LETTERS "TE" MARKED ON PN 9-2370624-2



SECTION A-A

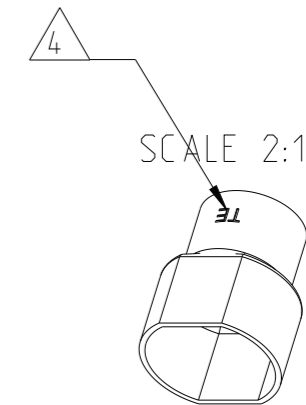


ISOMETRIC VIEW
SCALE 2:1



PN 9-2370624-1

SCALE 2:1

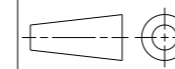


PN 9-2370624-2

9-2370624-2	A1	FERRULE DT HIGHSPEED 0.35mm ²	3
9-2370624-1	A2	FERRULE DT HIGHSPEED 0.50mm ²	
PART NO	REV	DESCRIPTION Beschreibung	MATERIAL material

THIS DRAWING IS A CONTROLLED DOCUMENT.

DIMENSIONS:
mm



TOLERANCES UNLESS OTHERWISE SPECIFIED:

0 PLC	±
1 PLC	±
2 PLC	±
3 PLC	±
4 PLC	±
ANGLES	±
FINISH	-

MATERIAL

-

DWN 22FEB2021
Sukshitha H P

CHK 23FEB2021
S. Helm

APVD 24FEB2021
J. Barth

PRODUCT SPEC
108-94825

APPLICATION SPEC
114-94706

WEIGHT
1.12

CUSTOMER DRAWING

NAME
DT Highspeed Ferrule
DT Highspeed Aussen crimp

SIZE A3 CAGE CODE 00779 DRAWING NO C-2370624 RESTRICTED TO -

SCALE 4:1 SHEET 1 OF 1 REV B

