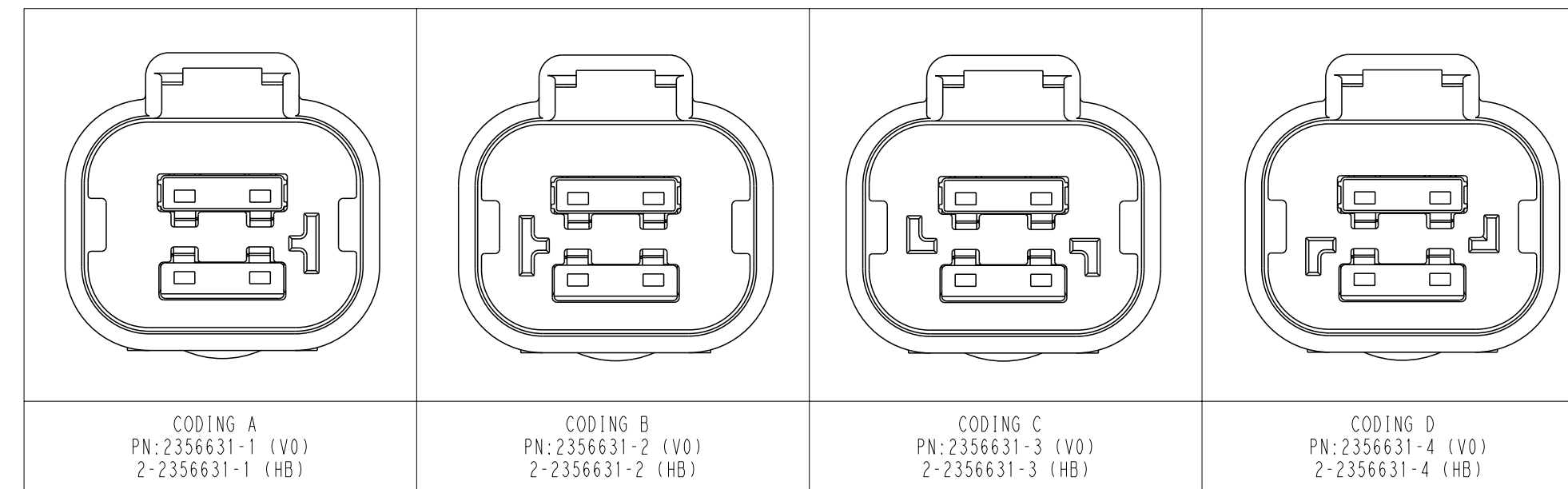
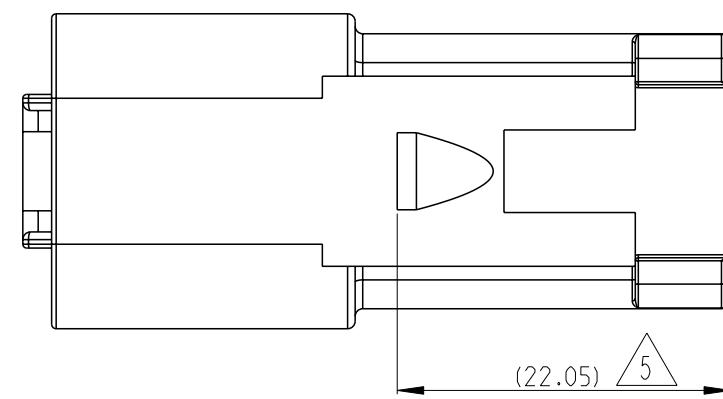
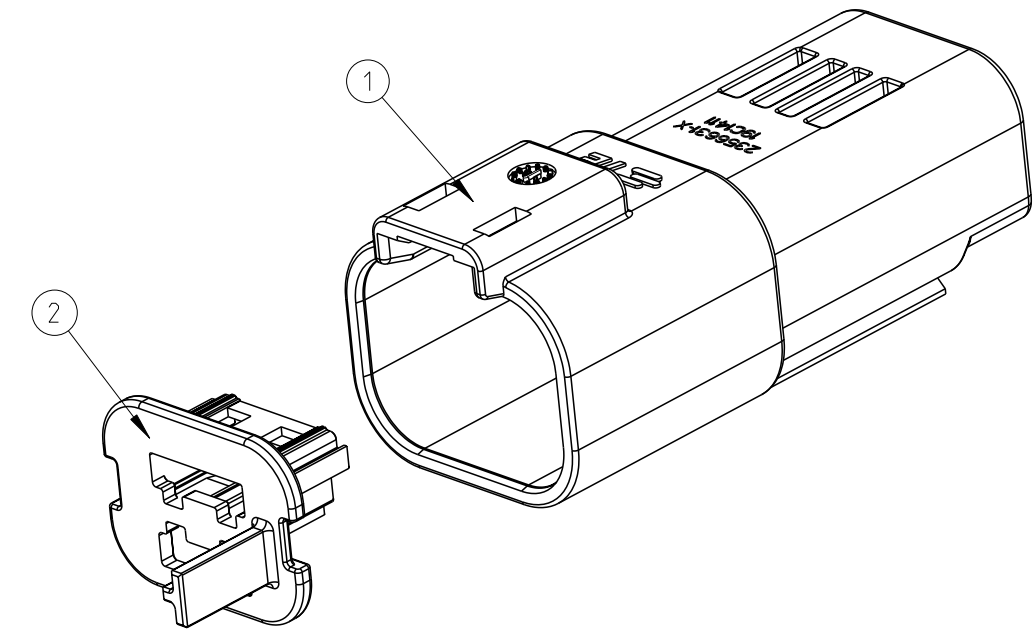
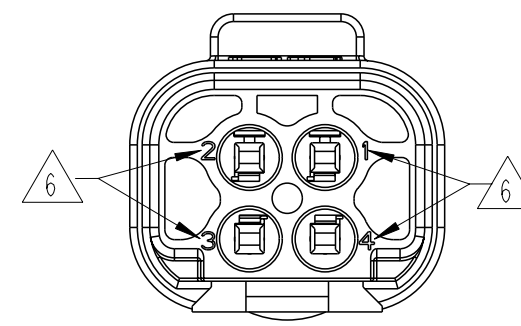
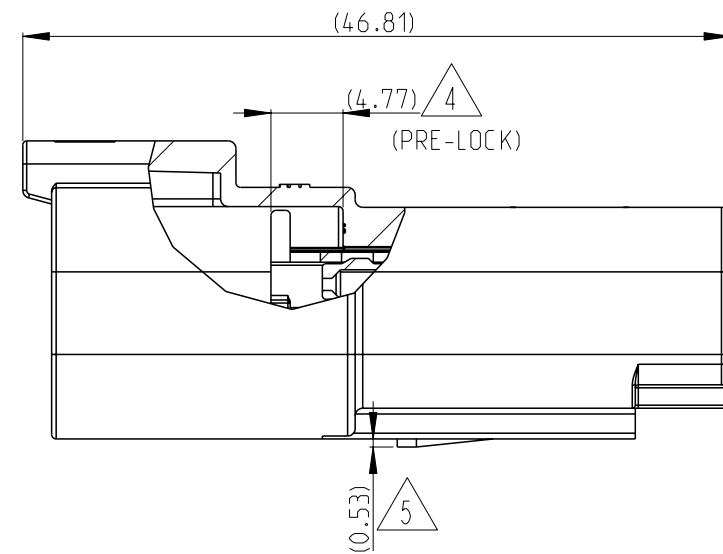
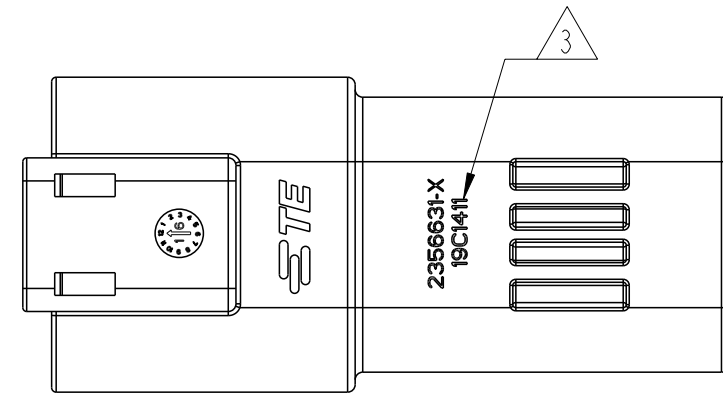
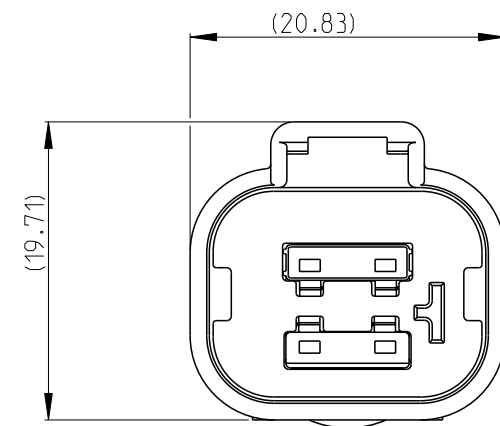
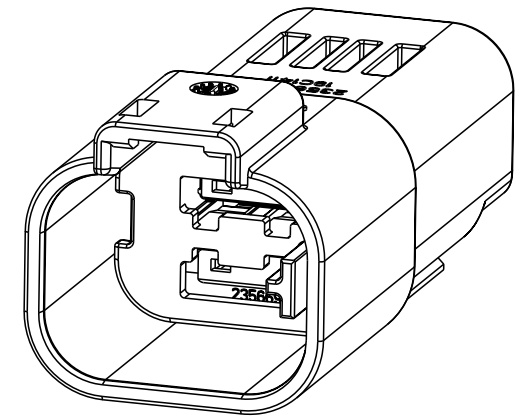


REVISIONS					
P	LTR	DESCRIPTION	DATE	DWN	APVD
A		INITIAL RELEASE	18SEP2019	V.T	I.Y
B		ECR-20-004362	30MAR2020	V.T	E.J
C		ECR-20-015258	01JUN2021	V.T	Z.Z



NOTES:

1. RECEPTACLE 2356631-X MATES WITH 2356607-X PLUG (X=1, 2, 3, 4 FOR RELEVANT CODE).  
RECEPTACLE 2-2356631-X MATES WITH 2-2356607-X PLUG (X=1, 2, 3, 4 FOR RELEVANT CODE).

2. MATERIAL: HOUSING: PBT GF30, SEE TABLE FOR COLOR  
TPA: PBT GF30, SEE TABLE FOR COLOR

3. DATE CODE: IDENTIFIES THE YEAR, MONTH, DAY AND HOUR OF ASSEMBLY.  
YEAR: FIRST AND SECOND DIGITS(19=2019)  
MONTH: THIRD DIGIT, EXCLUDING 1, A=JAN, B=FEB, C=MARCH...(K=OCTOBER)  
DAY: FOURTH AND FIFTH DIGITS(14=14th DAY)  
HOUR: SIXTH AND SEVENTH DIGITS(11=11AM)

4. PULL TPA TO PRE-LOCK BEFORE TERMINAL INSERTION IN CASE OF TPA BEING HIT TO END-LOCK POSITION.

5. REFER TO DRAWING DT04-DOVETAIL FOR CLIP INTERFACE DIMENSIONS, RECOMMEND MOUNTING CLIP PN LIST:  
PLASTIC VERSION PN:2355806-1.

6. WIRE NO

7. APPLICABLE TERMINAL PART NUMBERS AND WIRE SIZE:

TERMINAL PN	TERMINAL PLATING	APPLICATION	WIRE SIZE (MM2)	INSULATION WIRES(MM)	SWS P/N	BLIND PLUG P/N
2141114-1	TIN	GENERAL (USCAR-2 V2)	0.35	∅1.10-∅1.40	963142-2	963143-1
2141114-3	SILVER	HIGH VIBRATION (USCAR-2 V3)				
2141116-1	TIN	GENERAL (USCAR-2 V2)	0.5-0.75	∅1.40-∅1.90	963142-1	963143-1
2141116-3	SILVER	HIGH VIBRATION (USCAR-2 V3)				
2177610-1	TIN	GENERAL (USCAR-2 V2)	1.0-1.5	∅1.90-∅2.40	963142-1	963143-1
2177610-3	SILVER	HIGH VIBRATION (USCAR-2 V3)				

QTY. REQUEST PER ASSY								COLOR	MATERIAL	DESCRIPTION	ITEM NO
1				1				BLUE	PBT-GF30	TPA, CODE D	2
	1				1			NATURAL	PBT-GF30	TPA, CODE C	
		1				1		GREEN	PBT-GF30	TPA, CODE B	
			1				1	YELLOW	PBT-GF30	TPA, CODE A	1
1	1	1	1					GRAY	PBT-GF30	HOUSING	
				1	1	1	1	BLACK	PBT-GF30		

THIS DRAWING IS A CONTROLLED DOCUMENT.

DWN	V. TANG	18SEP2019
CHK	E. JIANG	18SEP2019
APVD	L. YIN	18SEP2019
PRODUCT SPEC	108-32189	
APPLICATION SPEC	114-32258	
WEIGHT	-	
CUSTOMER DRAWING		

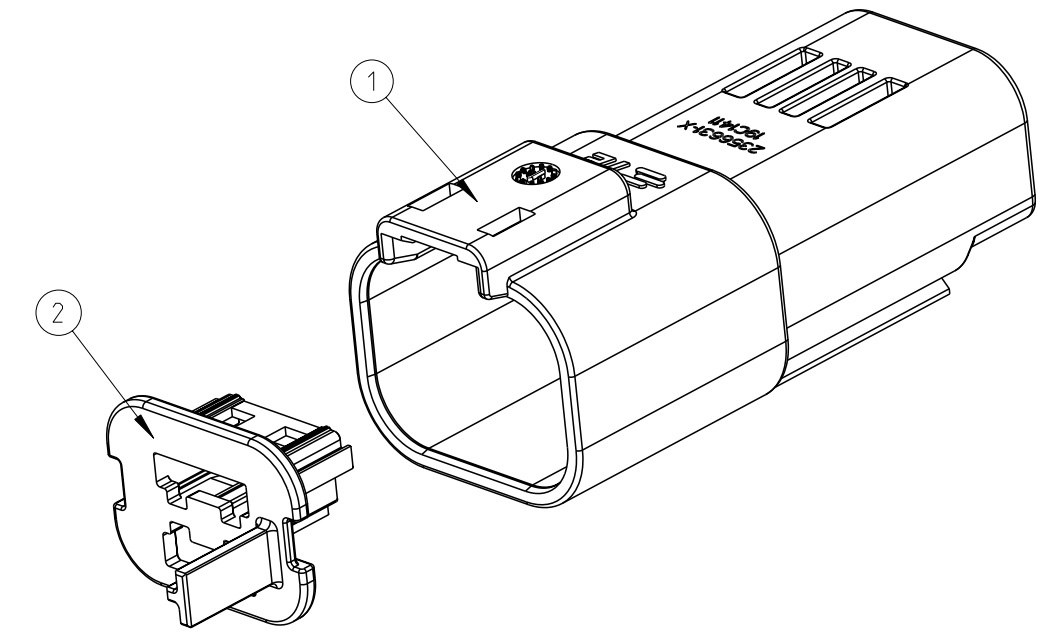
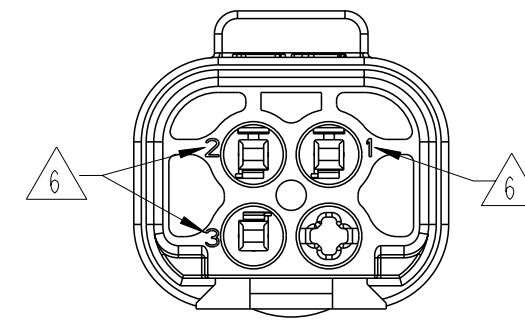
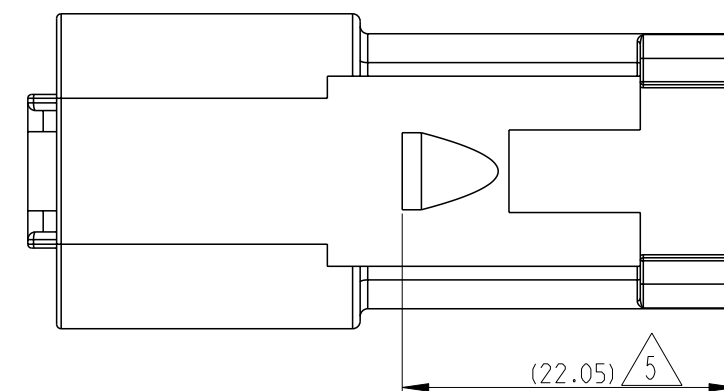
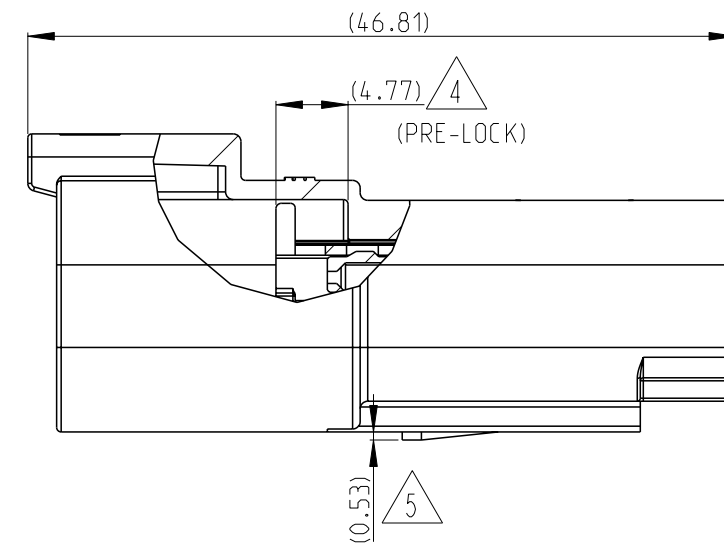
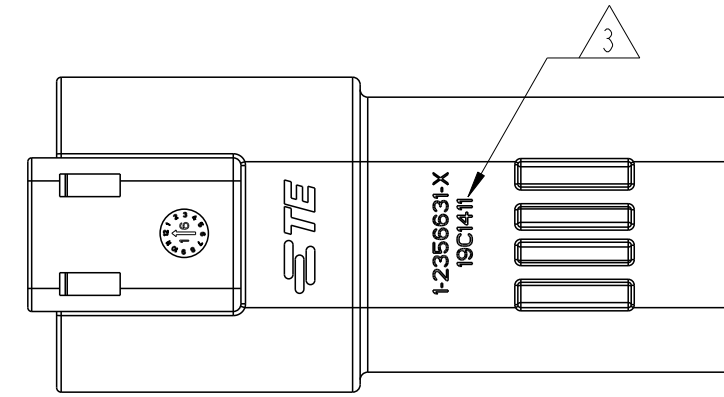
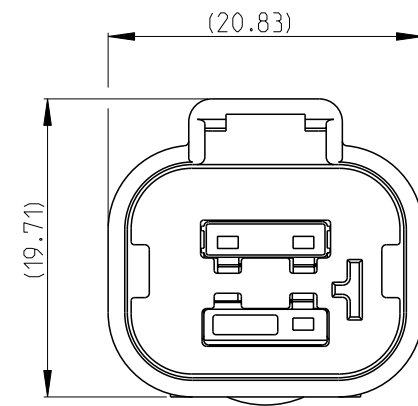
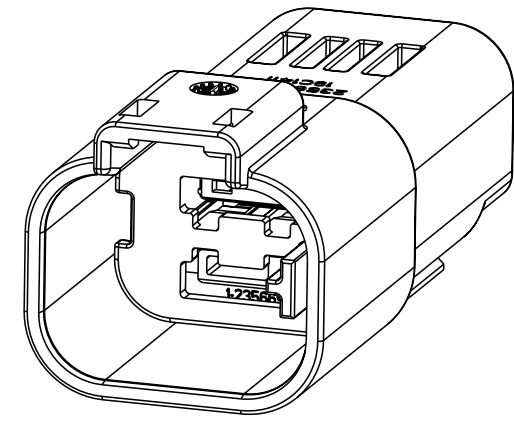
**STE** TE Connectivity

NAME: SUPERSEAL PRO 4POS.RECP. ASSEMBLY MCON1.2,CB TEMINAL

SIZE: A2 CAGE CODE: 00779 DRAWING NO: C-2356631 RESTRICTED TO: C

SCALE: 2:1 SHEET: 1 OF 2 REV: C

P	LTR	DESCRIPTION	DATE	DWN	APVD
-		SEE SHEET 1	-	-	-



NOTES:

- RECEPTACLE 1-2356631-X MATES WITH 1-2356607-X PLUG (X=1, 2, 3, 4 FOR RELEVANT CODE). RECEPTACLE 3-2356631-X MATES WITH 3-2356607-X PLUG (X=1, 2, 3, 4 FOR RELEVANT CODE).
- MATERIAL: HOUSING: PBT GF30, SEE TABLE FOR COLOR  
TPA: PBT GF30, SEE TABLE FOR COLOR
- DATE CODE: IDENTIFIES THE YEAR, MONTH, DAY AND HOUR OF ASSEMBLY.  
YEAR: FIRST AND SECOND DIGITS(19=2019)  
MONTH: THIRD DIGIT , EXCLUDING 1 , A=JAN, B=FEB, C=MARCH...(K=OCTOBER)  
DAY: FOURTH AND FIFTH DIGITS(14=14th DAY)  
HOUR: SIXTH AND SEVENTH DIGITS(11=11AM)
- PULL TPA TO PRE-LOCK BEFORE TERMINAL INSERTION IN CASE OF TPA BEING HIT TO END-LOCK POSITION.
- REFER TO DRAWING DT04-DOVETAIL FOR CLIP INTERFACE DIMENSIONS, RECOMMEND MOUNTING CLIP PN LIST:  
PLASTIC VERSION PN:2355806-1.
- WIRE NO
- APPLICABLE TERMINAL PART NUMBERS AND WIRE SIZE:

TERMINAL PN	TERMINAL PLATING	APPLICATION	WIRE SIZE (MM2)	INSULATION WIRES(MM)	SWS P/N	BLIND PLUG P/N
2141114-1	TIN	GENERAL (USCAR-2 V2)	0.35	Ø1.10-Ø1.40	963142-2	963143-1
2141114-3	SILVER	HIGH VIBRATION (USCAR-2 V3)				
2141116-1	TIN	GENERAL (USCAR-2 V2)	0.5-0.75	Ø1.40-Ø1.90	963142-1	963143-1
2141116-3	SILVER	HIGH VIBRATION (USCAR-2 V3)				
2177610-1	TIN	GENERAL (USCAR-2 V2)	1.0-1.5	Ø1.90-Ø2.40	963142-1	963143-1
2177610-3	SILVER	HIGH VIBRATION (USCAR-2 V3)				

CODING A	CODING B	CODING C	CODING D
PN:1-2356631-1 (V0) 3-2356631-1 (HB)	PN:1-2356631-2 (V0) 3-2356631-2 (HB)	PN:1-2356631-3 (V0) 3-2356631-3 (HB)	PN:1-2356631-4 (V0) 3-2356631-4 (HB)

1	1	1	1	1	1	1	1	1	1	COLOR	MATERIAL	DESCRIPTION	ITEM NO
	1									BLUE	PBT-GF30	TPA, CODE D	2
		1								NATURAL	PBT-GF30	TPA, CODE C	
			1							GREEN	PBT-GF30	TPA, CODE B	1
				1					1	YELLOW	PBT-GF30	TPA, CODE A	
1	1	1	1							GRAY	PBT-GF30	HOUSING	1
				1	1	1	1			BLACK	PBT-GF30		
QTY. REQUEST PER ASSY											WEIGHT OF EACH ASSY NO. (g)	REVISION OF EACH ASSY NO.	TE ASSEMBLY PN
9.6	9.6	9.5	9.5	10.3	10.3	10.2	10.2						
C	C	C	C	C	C	C	C						
3-2356631-4 (HB)	3-2356631-3 (HB)	3-2356631-2 (HB)	3-2356631-1 (HB)	1-2356631-4 (V0)	1-2356631-3 (V0)	1-2356631-2 (V0)	1-2356631-1 (V0)						

THIS DRAWING IS A CONTROLLED DOCUMENT.

DIMENSIONS:	TOLERANCES UNLESS OTHERWISE SPECIFIED:
mm	
	0 PLC ±
	1 PLC ±0.25
	2 PLC ±0.15
	3 PLC ±
	4 PLC ±
	ANGLES ±
	FINISH

DWN	V. TANG	18SEP2019
CHK	E. JIANG	18SEP2019
APVD	J. YIN	18SEP2019
PRODUCT SPEC	108-32189	
APPLICATION SPEC	114-32258	
WEIGHT	-	
CUSTOMER DRAWING		

**STE** TE Connectivity

NAME: SUPERSEAL PRO 3POS.RECP. ASSEMBLY MCON1.2,CB TEMINAL

SIZE: A2 CAGE CODE: 00779 DRAWING NO: C-2356631 RESTRICTED TO: C

SCALE: 2:1 SHEET: 2 OF 2 REV: C