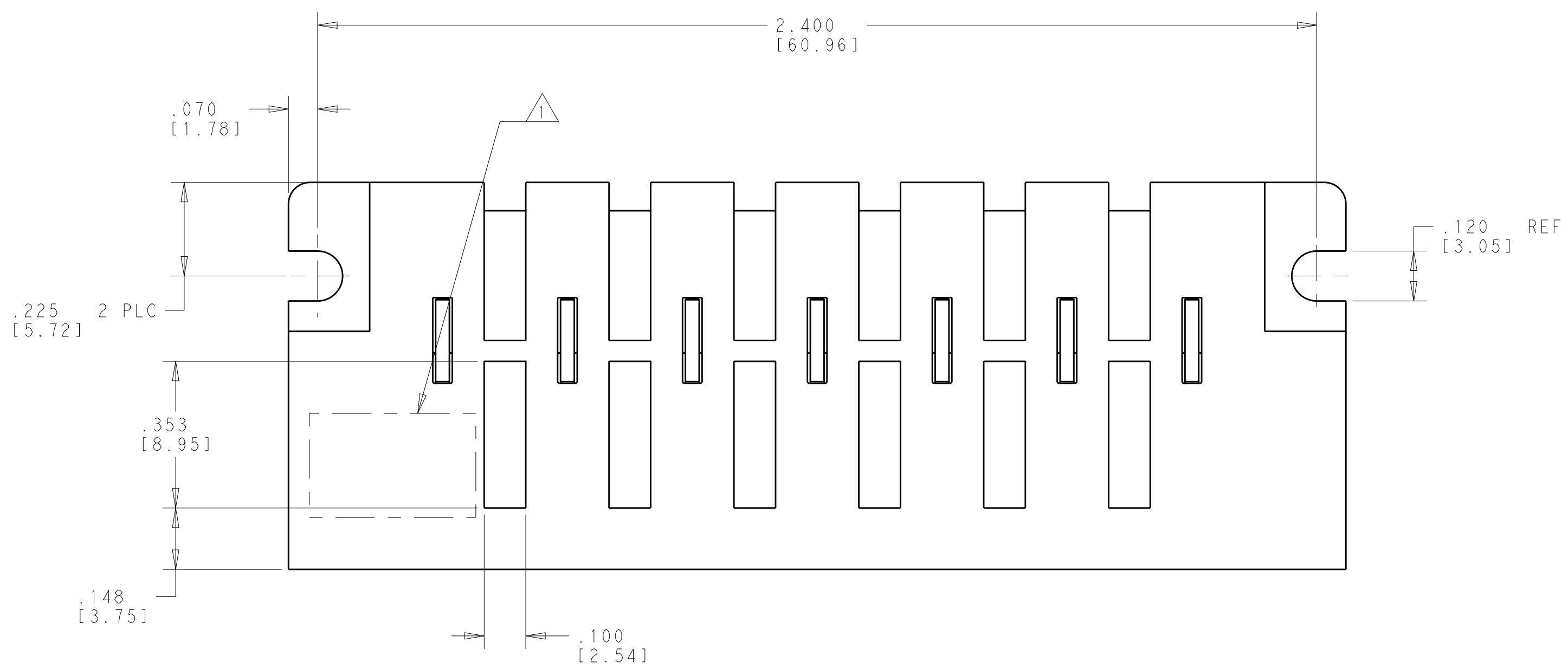
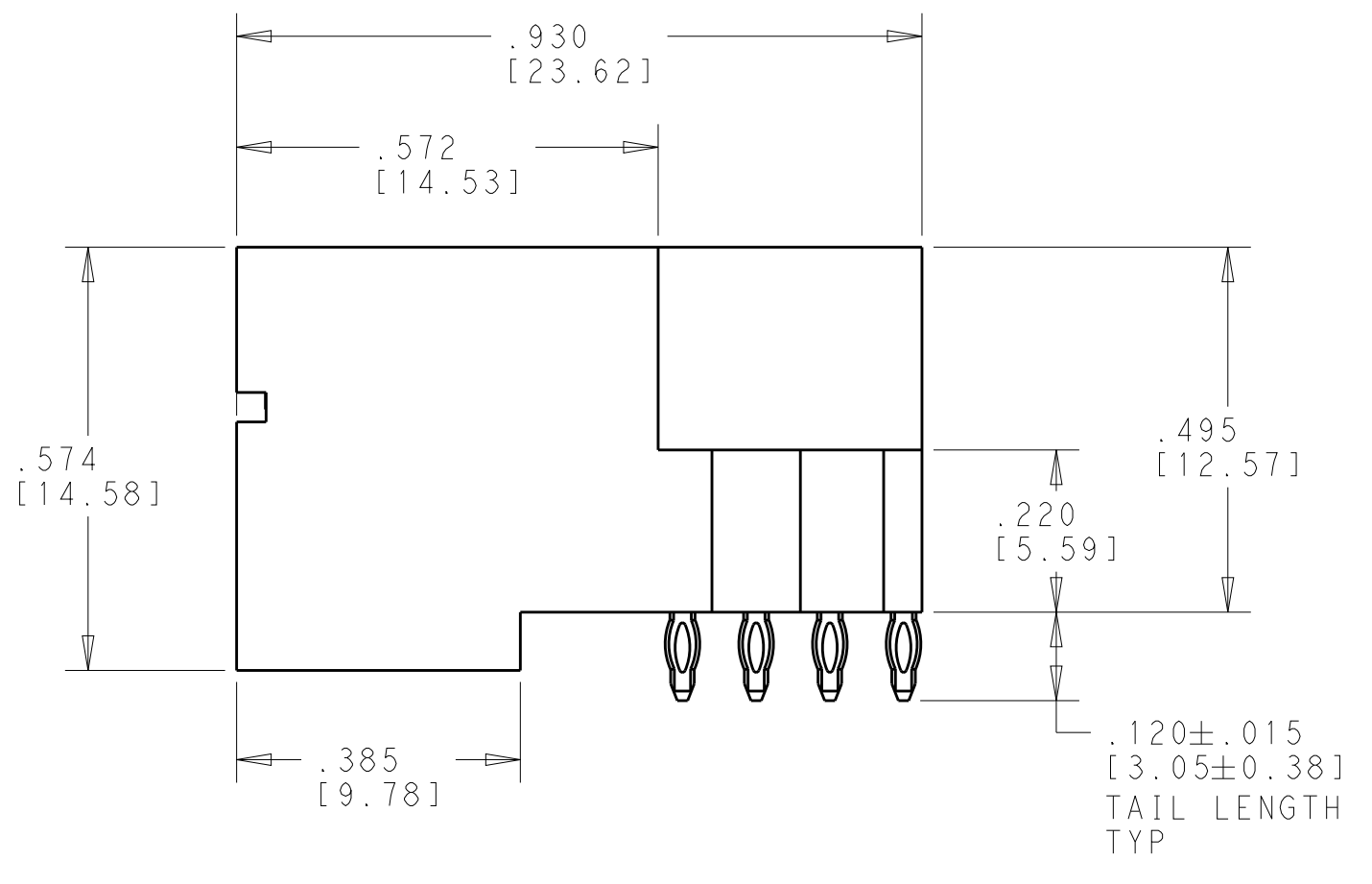
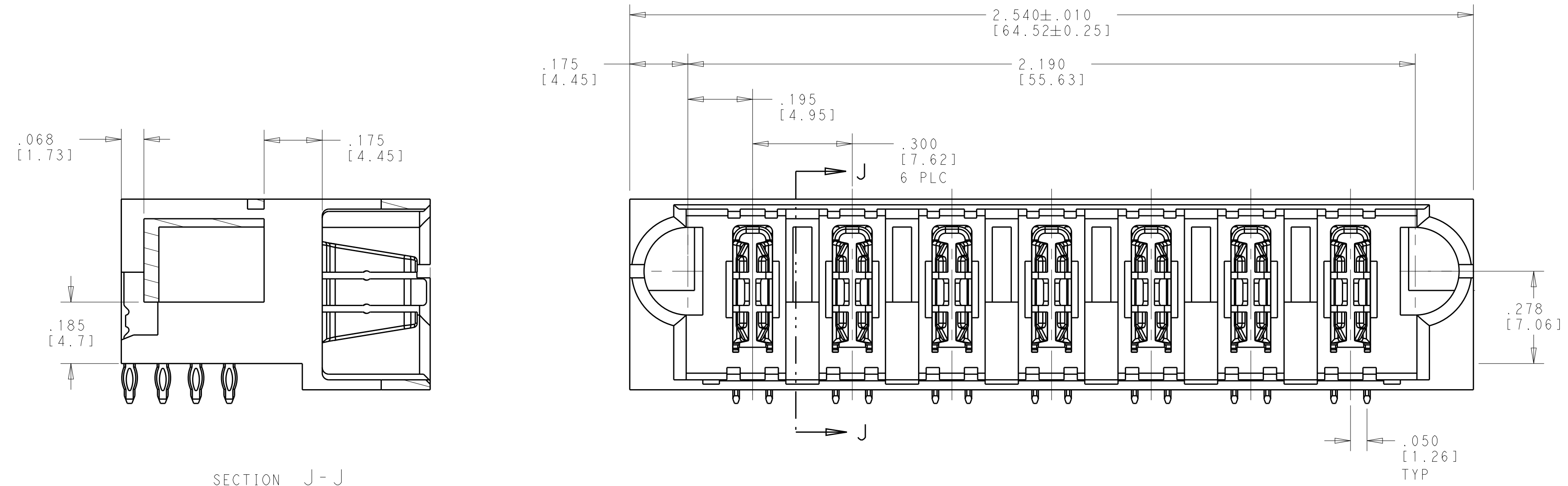


REVISIONS				
P.	LTN	DESCRIPTION	DATE	APVD
A		RELEASED PER ECO-20-010202	09JUL2020	DCB DH



- 1 "TE", PART NUMBER, AND DATECODE TO BE MARKED IN AREA SHOWN. PARTS UNDER 2.00 [50.8] LONG MAY BE MARKED ON BOTH SIDES.
- 2 MATERIAL:
HOUSING - GLASS FILLED HIGH TEMP THERMO PLASTIC, BLACK, UL94 V-0
POWER CONTACT - HIGH CONDUCTIVITY COPPER ALLOY
- 3 CONTACT PLATING:
POWER CONTACTS - .000050 [0.00127] MIN Ni UNDER ALL
.000050 [0.00127] MIN Au ON CONTACT AREA
.000005 [0.00013] MIN Au AT PCB INTERFACE
- 4 CONNECTOR OUTLINE.
- 5 DATUM AND BASIC DIMENSIONS ESTABLISHED BY CUSTOMER.
- 6 PCB - HOLE DIAMETERS ARE FINISHED HOLE SIZE.
- 7 PCB - .0453±.0010 [1.151±0.025] DRILLED HOLES PLATED WITH .0003 [0.008] MIN Sn OVER .001-.003 [0.03-0.08] Cu PLATING TO ACHIEVE A .040±.003 [1.02±0.08] HOLE.
- 8 SUGGESTED NON-PLATED CLEARANCE SLOTS FOR HIGH VOLTAGE APPLICATIONS. OPTIONAL HIGH VOLTAGE FIN COMPONENTS 2313445-1 SOLD SEPARATELY (6 PER CONNECTOR).



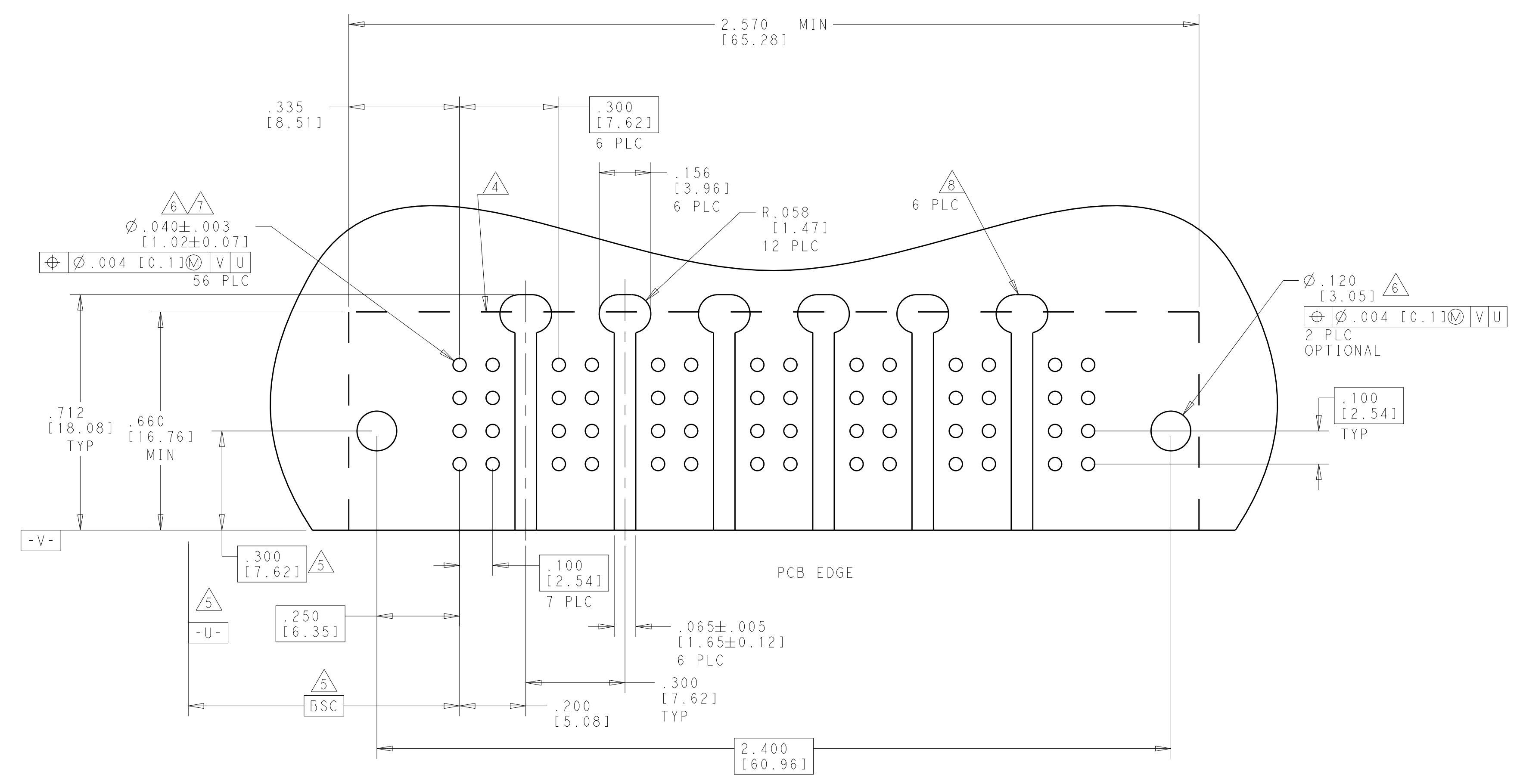
SECTION J-J

7P	2348886
DESCRIPTION	PART NUMBER

THIS DRAWING IS A CONTROLLED DOCUMENT.		DWN L.SIPE 17DEC2018	
DIMENSIONS: INCHES [mm]		CHK C.GINGRICH 17DEC2018	
TOLERANCES UNLESS OTHERWISE SPECIFIED:		APVD C.GINGRICH 17DEC2018	RIGHT ANGLE HEADER, PRESS FIT MULTI-BEAM XLE VITA 62.2 6U P0
0 PLC ±. 1 PLC ±. 2 PLC ±. 3 PLC ±.005 4 PLC ±.0020 ANGLES ±.7°		PRODUCT SPEC 108-163023 APPLICATION SPEC 114-13251	
MATERIAL		SIZE 114-13251	RESTRICTED TO
FINISH		WEIGHT	A100779C=2348886
RESTRICTED CUSTOMER		SCALE 4:1	SHEET 1 OF 2 REV A

REVISIONS				
P.	LTN	DESCRIPTION	DATE	APVD
-	-	SEE SHEET 1	-	-

PART NUMBER	ROWS	POWER				POWER			
		P1	P2	P3	P4	P5	P6	P7	
2348886-1	D	C	TT	TT	TT	TT	TT	TT	
	C								
	B								
	A								
7P									



RECOMMENDED PCB LAYOUT

THIS DRAWING IS A CONTROLLED DOCUMENT.		DESCRIPTION	
DWN	L.SIPE 17DEC2018	STD PRESS FIT POWER CONTACT, .120 [3.05] TAIL LENGTH	
CHK	C.GINGRICH 17DEC2018	TT IDENTIFIER	
APVD	C.GINGRICH 17DEC2018	TE Connectivity	
DIMENSIONS: INCHES [mm]		NAME: RIGHT ANGLE HEADER, PRESS FIT	
TOLERANCES UNLESS OTHERWISE SPECIFIED:		MULTI-BEAM XLE	
0 PLC	±	VITA 62.2 6U P0	
1 PLC	±	SIZE: 114-13251	
2 PLC	±	WEIGHT: -	
3 PLC	±.005	RESTRICTED TO: A100779C=2348886	
4 PLC	±.0020	SCALE: 4:1 SHEET 2 OF 2 REV A	
ANGLES	±.0020	RESTRICTED CUSTOMER	
FINISH	±.0020		