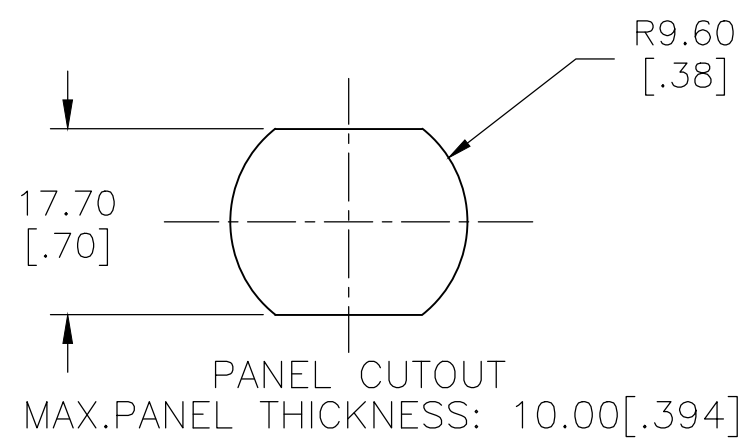


CONTACT RATING: SILVER: 3A @ 250 VAC RESISTIVE
INSULATION RESISTANCE: 1,000MΩ MIN AT 500VDC
DIELECTRIC STRENGTH: 2,000V RMS @ SEA LEVEL
CONTACT RESISTANCE: 50 mΩ MAX @ 1A 12VDC (INITIAL VALUE)
ELECTRICAL LIFE: 50,000 MAKE AND BREAK CYCLES
AT FULL LOAD



ACTUATION FORCE: SP: 5.5±1 NEWTON
ACTUATION TRAVEL: APPROXIMATELY 3.2mm
SEALED PER IP67, IK10 (STAINLESS)
OPERATING TEMPERATURE: -20°C TO +55°C
MECHANICAL LIFE: LOCKING: 500,000 CYCLES
HARDWARE TORQUE: 5-14 N·m

BUSHING: STAINLESS STEEL
BASE: PBT (UL 94-V0), PC (UL 94-V2)
ACTUATOR: STAINLESS STEEL, PC
O-RING: SILICONE
TERMINAL: COPPER ALLOY, SILVER PLATED
HEX NUT: BRASS, NICKEL PLATED
INNER ASSEMBLY: POM/PA66
SEALANT: SILICONE
CONTACT: COPPER ALLOY, SILVER PLATED.
SPRING: SPRING STEEL

1. COMPLIANCE:
THE CURRENT STATEMENT OF COMPLIANCE IS AVAILABLE AT TE.COM.
2. HARDWARE IS SHIPPED UNASSEMBLED.



PRELIMINARY

SINGLE POLE- LOCKING	SILVER	BLUE	12V	TBD	3-2344203-7					
POLE/THROW	CONTACT	LED COLOUR	LED VOLTAGE	TE DESCRIPTIVE PN	TE PART NUMBER					
THIS DRAWING IS A CONTROLLED DOCUMENT.		DWN DEEPA H C	100CT2018	<div>TE Connectivity</div>						
		CHK Peter Ott	100CT2018							
DIMENSIONS: mm [INCHES]	TOLERANCES UNLESS OTHERWISE SPECIFIED:		APVD Peter Ott	100CT2018	NAME					
	0 PLC ± -		PRODUCT SPEC		- ANTI-VANDAL SWITCH 19mm POWER LOGO LED					
	1 PLC ± 0.4[.016]		-							
	2 PLC ± 0.25[.010]		APPLICATION SPEC							
	3 PLC ± -		-							
	4 PLC ± -				SIZE	CAGE CODE	DRAWING NO	RESTRICTED TO		
MATERIAL	FINISH		WEIGHT		A2	00779	C-2344203	-		
CUSTOMER DRAWING			SCALE		6:1	SHEET		1 of 1	REV	2