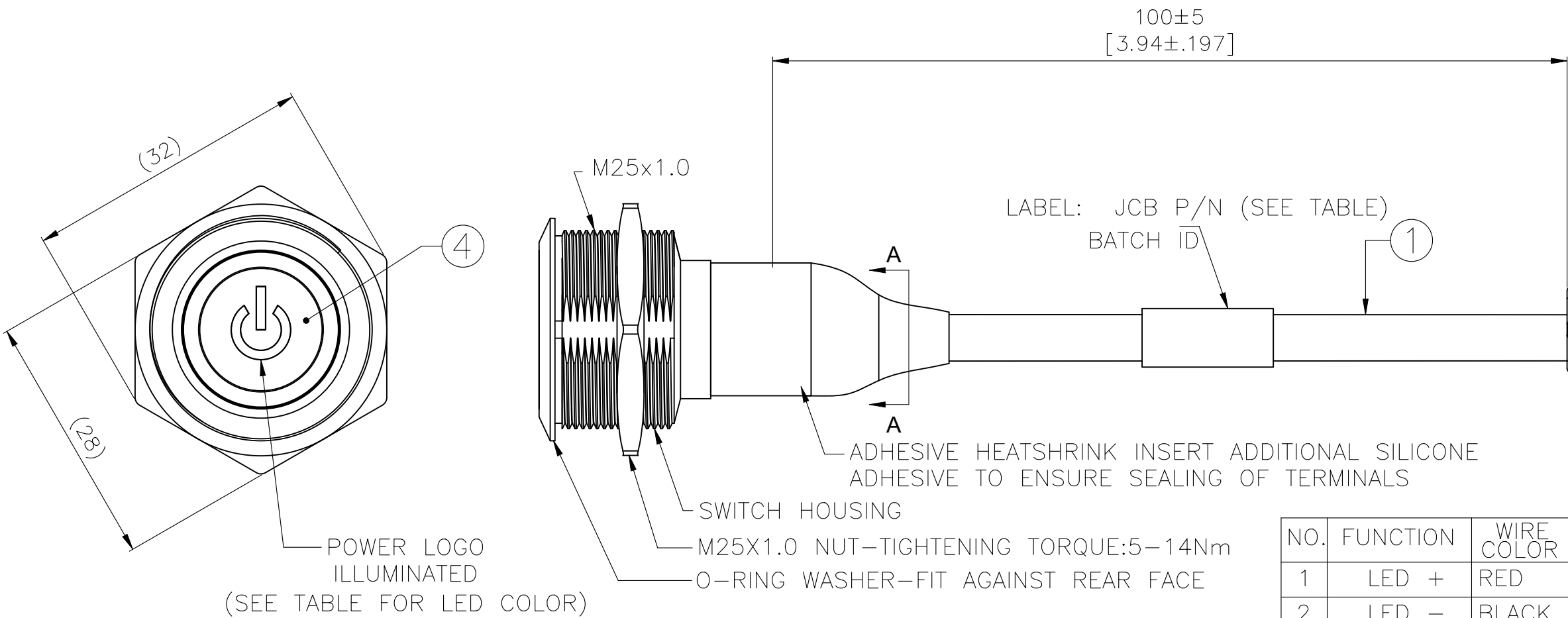


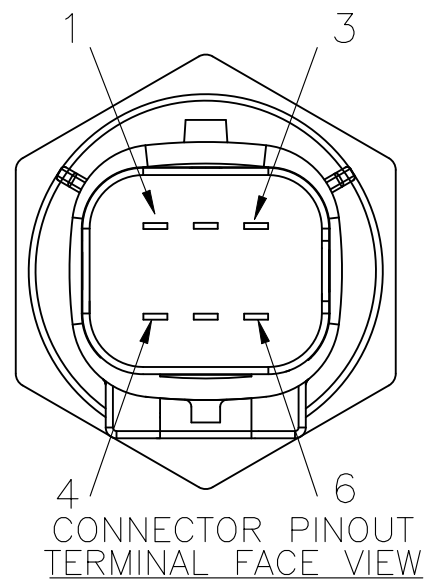
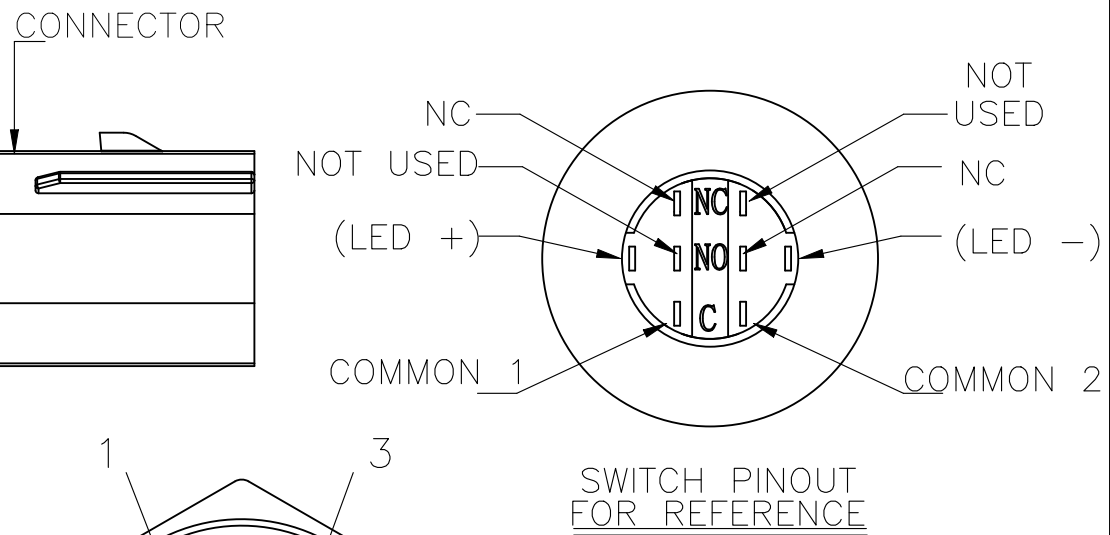
REVISIONS					
P	LTR	DESCRIPTION	DATE	DWN	APVD
	B1	REVISED PER ECR-25-250442	11JUL2025	AS	PO

BILL OF MATERIALS

NO.	NAME	DESCRIPTION	QTY
1	WIRE	18AWG,300V(Black/Yellow/Purple/Red)	
2	HOUSING	MOLEX:33482-3601	1pc
3	TERMINAL	MOLEX:33011-1008	6pcs
4	ACTUATOR	PC, STAINLESS STEEL	1pc



NO.	FUNCTION	WIRE COLOR	TERMINAL	WIRE CSA(mm²)
1	LED +	RED	LED +	0.5
2	LED -	BLACK	LED -	0.5
3	COMMON 1	YELLOW	COMMON 1	0.5
4	NC	PURPLE	NC	0.5
5	COMMON 2	YELLOW	COMMON 2	0.5
6	NO	PURPLE	NO	0.5

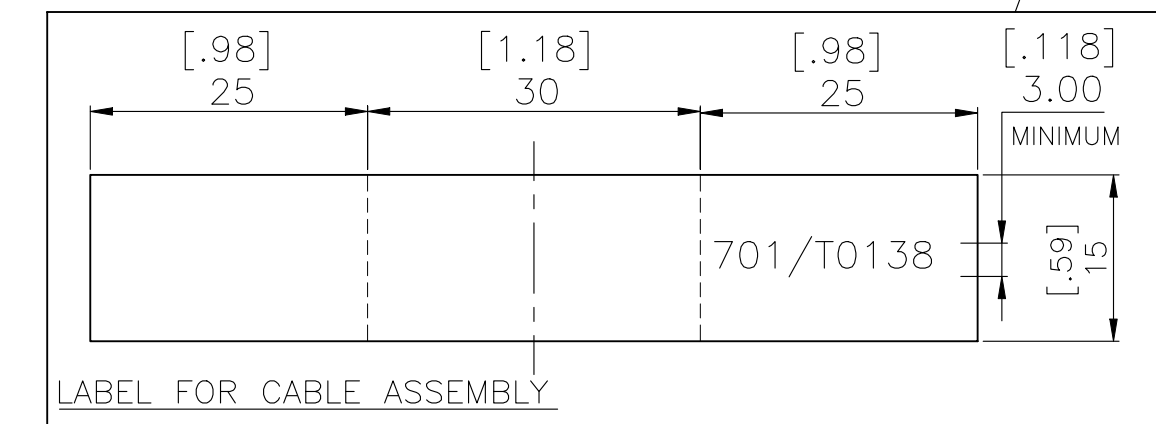
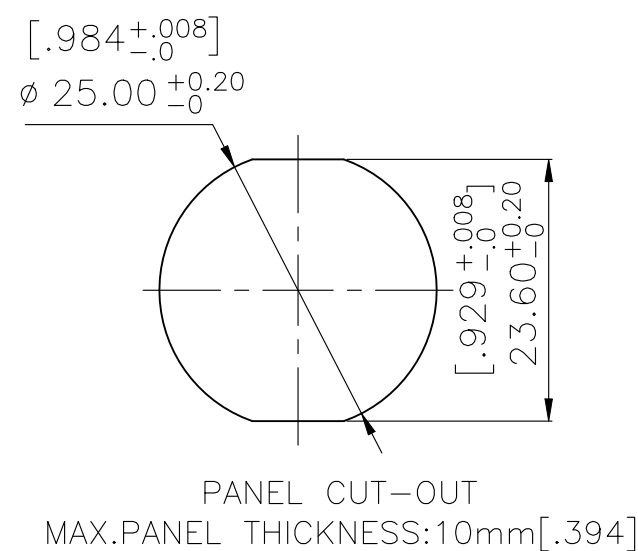
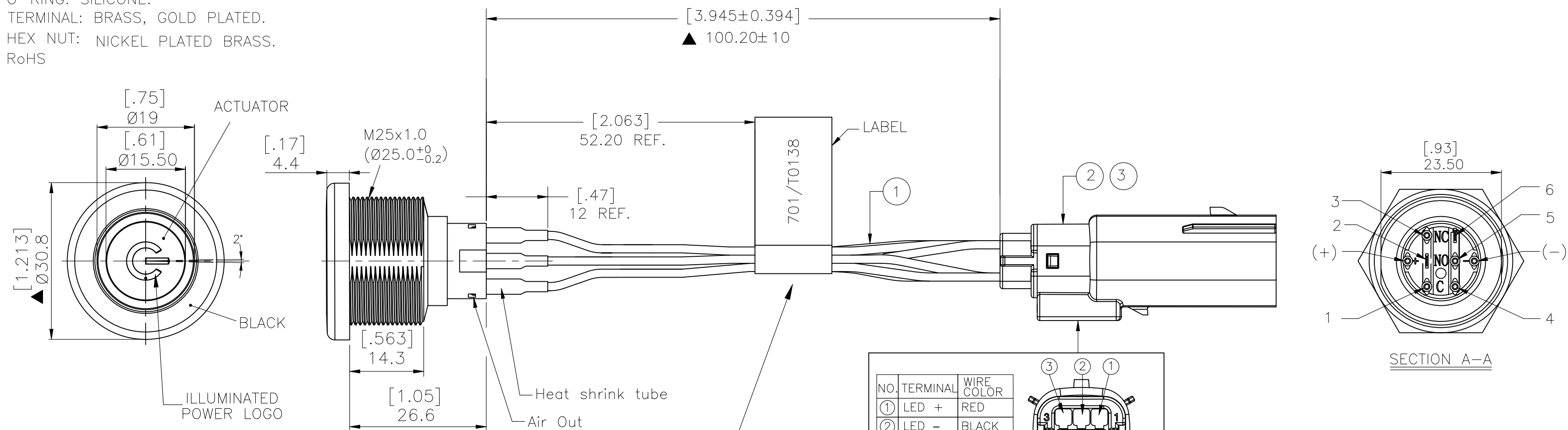


- NOTES:
- RATING: RESISTIVE LOAD 3A/250VAC LTH 5A/250VAC
 - LED COLOR: REFER BELOW PARTS LIST.
 - LED VOLTAGE: 12VDC
 - SWITCHING FUNCTION: REFER BELOW PARTS LIST.
 - CONTACT: GOLD-PLATED BRASS ALLOY
 - INSULATION RESISTANCE: 1,000MΩ MINIMUM AT 500VDC
 - ELECTRICAL LIFE: 50,000 MAKE-AND-BREAK CYCLES AT FULL LOAD
 - ACTUATION FORCE: REFER BELOW PARTS LIST.
 - ACTUATION TRAVEL: 3.2mm
 - INGRESS PROTECTION
 - PANEL SIDE IP67
 - WIRE SIDE IP X3
 - OPERATING TEMPERATURE RANGE: -20°C TO +55°C
 - MECHANICAL LIFECYCLES: 1 MILLION CYCLES MOMENTARY
 - MOUNTING TORQUE: 0.8±0.2 Nm

REFER SHEET 2	REFER SHEET 2	REFER SHEET 2	REFER SHEET 2	REFER SHEET 2	REFER SHEET 2	2338952-3
MOVING RING PLUS POWER LOGO	SOLDER TERMINAL	DOUBLE POLE LOCKING	3.5±1 N	BLUE	701/T0137	2338952-2
				WHITE	701/T0136	2338952-1
LIGHT TYPE	TERMINAL OPTION	POLE/THROW	ACTUATION FORCE	LED COLOR	JCB P/N	TE P/N

THIS DRAWING IS A CONTROLLED DOCUMENT.			DWN RAVI S 27JUN2018	TE Connectivity Ltd.		
			CHK PETER OTT 27JUN2018			
			APVD PETER OTT 27JUN2018	NAME		
			PRODUCT SPEC	ANTI-VANDAL SWITCH 25mm, MOVING RING LED PLUS POWER LOGO		
			APPLICATION SPEC			
			WEIGHT	SIZE A2	CAGE CODE 00779	DRAWING NO C-2338952
			CUSTOMER DRAWING	SCALE 1:1	SHEET 1 of 2	REV B1

BILL OF MATERIALS			
NO.	NAME	DESCRIPTION	Q'TY
1	WIRE	18AWG,300V(Black/Yellow/Purple/Red)	6
2	CONNECTOR	MOLEX:33482-3601	1
3	TERMINALS	MOLEX:33011-1008	6

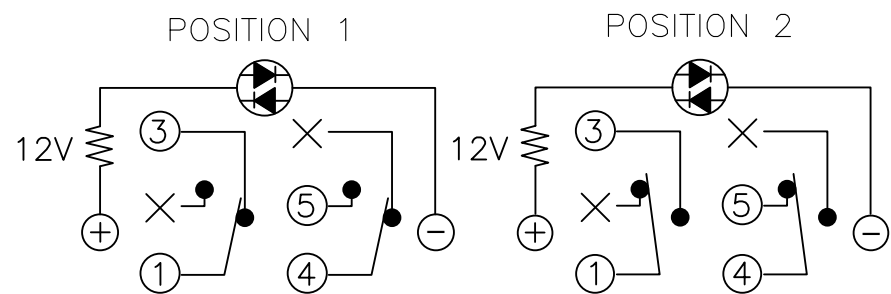
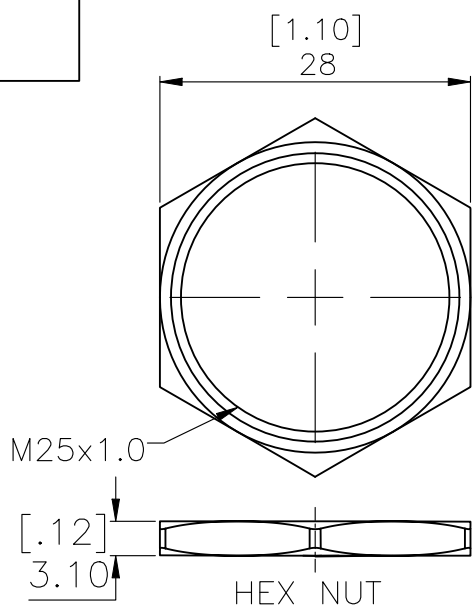


NO.	TERMINAL	WIRE COLOR
①	LED +	RED
②	LED -	BLACK
③	1	YELLOW
④	3	PURPLE
⑤	4	YELLOW
⑥	5	PURPLE

1. CONTACT MATERIAL: BRASS, COIN SILVER, GOLD PLATED.
2. RATING: 17H 5A/250VAC. RESISTIVE LOAD 3A/250VAC.
3. ELECTRICAL LIFE: 50,000 MAKE-AND-BREAK CYCLES AT FULL LOAD.
4. MECHANICAL LIFE: MOMENTARY 1,000,000.
5. INSULATION RESISTANCE: 1,000M Ω MIN AT 500VDC.
6. DIELECTRIC STRENGTH: 2,000V RMS@SEA LEVEL.
7. CONTACT RESISTANCE: 50M Ω MAX.@1A 12VDC(INITIAL VALUE).

NOTE: WHEN THE SWITCHES ARE WITH THE WIRE ASSEMBLY, WE ONLY TEST THE CONTACT RESISTANCE AND WILL NOT TEST THE CONTACT RESISTANCE WHEN THE SWITCHES ARE IN THE OPEN POSITION.

8. OPERATING TEMPERATURE: -20°C to 55°C .
9. TRAVEL: ABOUT 3.2mm.
10. OPERATING PRESSURE: 6.0 \pm 1N (TRAVEL AT 2.5mm).
11. INGRESS PROTECTION: IP67, IK08 (STAINLESS).
12. TORQUE: 0.8 \pm 0.2 N-m.



MOVING RING PLUS POWER		SOLDER TERMINAL		DOUBLE POLE MOMENTARY		6.0±1N TRAVEL AT 2.5mm		MILKY WHITE		701/T0138		2338952-3	
LIGHT TYPE		TERMINAL OPTION		POLE/THROW		ACTUATION FORCE		LED COLOR		JCB P/N		TE P/N	
THIS DRAWING IS A CONTROLLED DOCUMENT.				DWN A.SABARAD		27JUN2025		<div>STE</div> TE Connectivity Ltd.					
				CHK M.YADAV		27JUN2025							
DIMENSIONS: mm [INCHES]		TOLERANCES UNLESS OTHERWISE SPECIFIED:		APVD M.YADAV		27JUN2025		NAME					