

THIS DRAWING IS UNPUBLISHED.

RELEASED FOR PUBLICATION

-,-

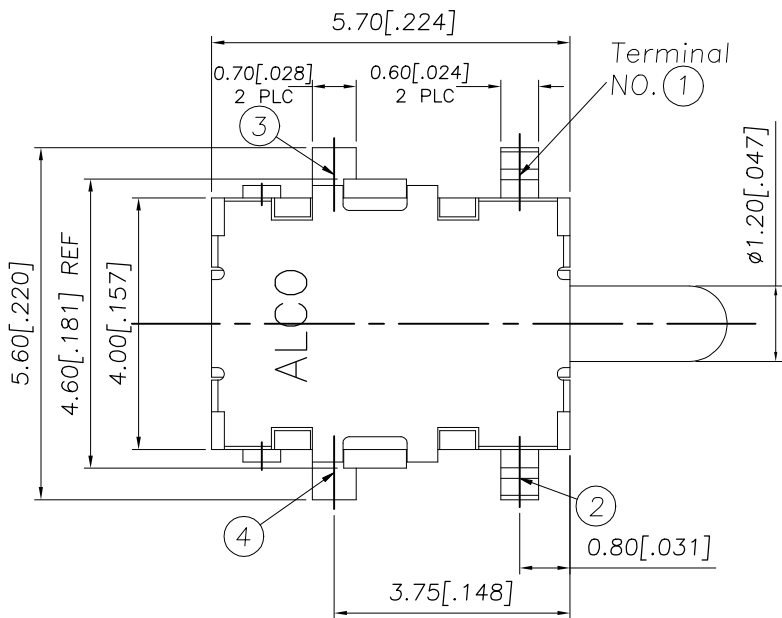
© COPYRIGHT - TE Connectivity Ltd.

ALL RIGHTS RESERVED.

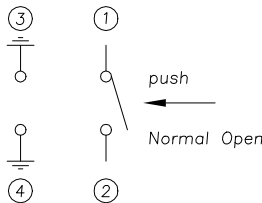
REVISIONS

P	LTR	DESCRIPTION	DATE	DWN	APVD
	A	ECR-18-012767	14AUG2018	DHC	AS

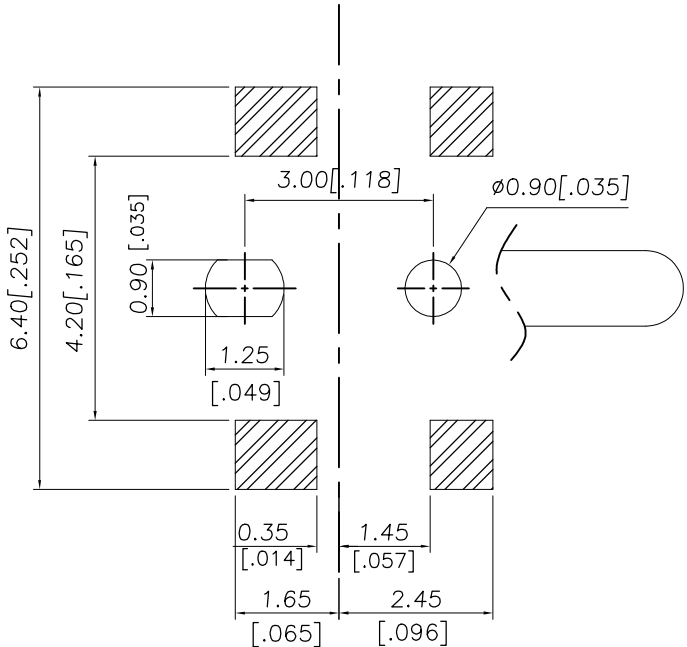
2331392-1
AS SHOWN



CIRCUIT DIAGRAM

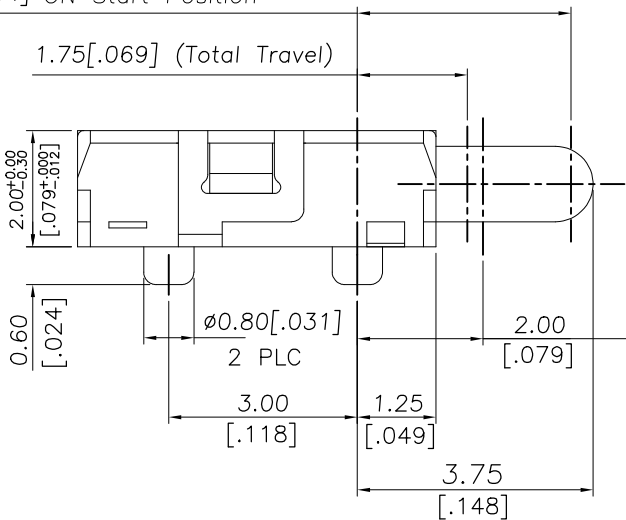


P.C.B LAYOUT

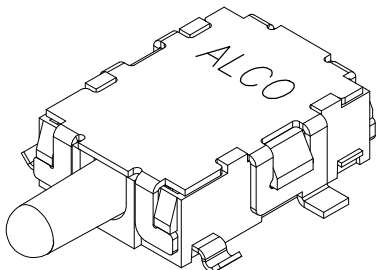
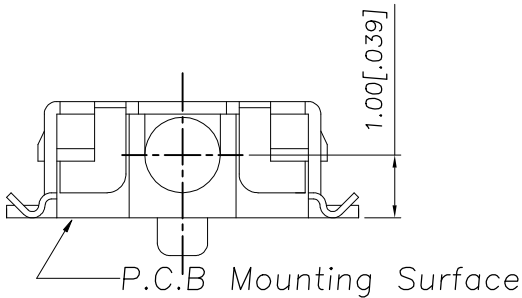


3.40[.134] ON Start Position

1.75[.069] (Total Travel)



Contact resistance & operating force measurement position



THIS DRAWING IS A CONTROLLED DOCUMENT.

DWN 07MAR2018
GANESH C M
CHK 07MAR2018
ALEXANDER SHARPE
APVD 07MAR2018
ALEXANDER SHARPE
PRODUCT SPEC



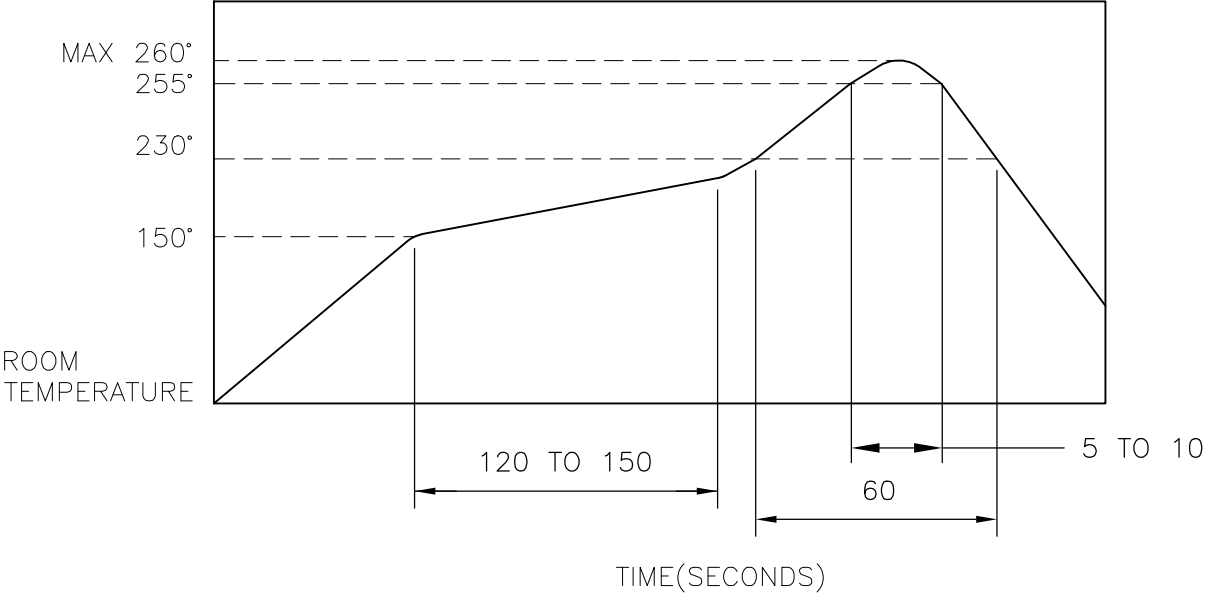

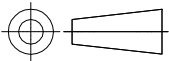
TE Connectivity Ltd.

NAME
SWITCH, DETECTOR, JJH SERIES, 5.7X4.0mm,
HORIZONTAL, SMT, POSTS

SIZE	CAGE CODE	DRAWING NO	RESTRICTED TO
A3	00779	C-2331392	-

CUSTOMER DRAWING

SCALE NTS SHEET 1 of 3 REV A

4		3		2		1					
THIS DRAWING IS UNPUBLISHED.		RELEASED FOR PUBLICATION		REVISIONS							
© COPYRIGHT — TE Connectivity Ltd.		ALL RIGHTS RESERVED.		P	LTR	DESCRIPTION	DATE	DWN	APVD		
					—	SEE SHEET 1	—	—	—		
NOTES:				4. <u>SOLDER CONDITIONS</u>							
1. MATERIALS				SMT							
ACTUATOR: THERMOPLASTIC, UL 94V-0, BLACK											
BODY: THERMOPLASTIC, UL 94V-0, WHITE											
COVER: STAINLESS STEEL, SILVER PLATE											
TERMINAL: COPPER ALLOY, SILVER PLATE											
SPRING: STAINLESS STEEL											
CONTACT: STAINLESS STEEL, SILVER PLATE											
2. <u>COMPLIANCE:</u>											
ALL MATERIALS AND FINISHES SHALL COMPLY WITH EU DIRECTIVE 2002/95/EC OF 27JAN2003(RoHS)											
3. <u>SPECIFICATIONS:</u>											
RATING: 1mA 5V DC											
CONTACT RESISTANCE: 1Ω MAXIMUM(INITIAL)											
INSULATION RESISTANCE: 100MΩ MINIMUM AT 100 V DC											
DIELECTRIC STRENGTH: 100 V AC, 1 MINUTE											
OPERATING LIFE: 100,000 CYCLES WITH LOAD											
TOTAL TRAVEL: 2.00 [.079]											
ACTUATION FORCE: 150gf MAXIMUM											
OPERATING TEMPERATURE: -10°C TO 60° C											
STORAGE TEMPERATURE: -20°C TO 70° C											
				THE CONDITION MENTIONED ABOVE IS THE TEMPERATURE ON THE CU FOIL OF THE PCB SURFACE. THERE ARE CASES WHERE THE BOARD'S TEMPERATURE GREATLY DIFFERS FROM THE SWITCH'S SURFACE. DO NOT ALLOW SWITCH'S SURFACE TEMPERATURE TO EXCEED 260°C							
				MANUAL SOLDERING							
				SOLDERING TEMPERATURE		MAX.350°C.					
				CONTINUOUS SOLDERING TIME		MAX. 5 SECONDS.					
				PRECAUTIONS IN HANDLING							
				1. CARE SHOULD BE EXERCISED SO THAT FLUX FROM THE UPPER PART OF THE PRINTED CIRCUIT BOARD DOES NOT ADHERE TO THE SWITCH.							
						JJHH0UG200NOPMRTR		2331392-1			
						SMART PART NUMBER		PART NUMBER			
THIS DRAWING IS A CONTROLLED DOCUMENT.		DWN 07MAR2018 GANESH C M		 TE Connectivity Ltd.							
DIMENSIONS: mm [INCHES]		TOLERANCES UNLESS OTHERWISE SPECIFIED:								NAME	
		0 PLC ± - 1 PLC ± - 2 PLC ± 0.20 [.008] 3 PLC ± - 4 PLC ± - ANGLES ± -		PRODUCT SPEC							
				APPLICATION SPEC							
				WEIGHT							
MATERIAL		FINISH		CUSTOMER DRAWING		SCALE		SHEET		REV	
-		-				NTS		2 of 3		A	

1470-19 (1/15)

THIS DRAWING IS UNPUBLISHED.

RELEASED FOR PUBLICATION

© COPYRIGHT — TE Connectivity Ltd.

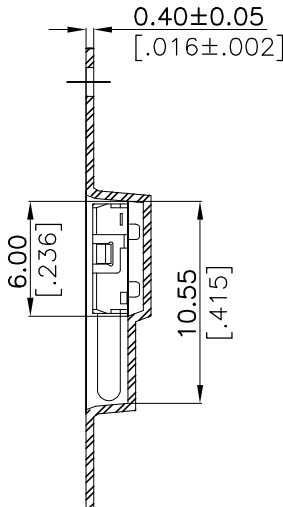
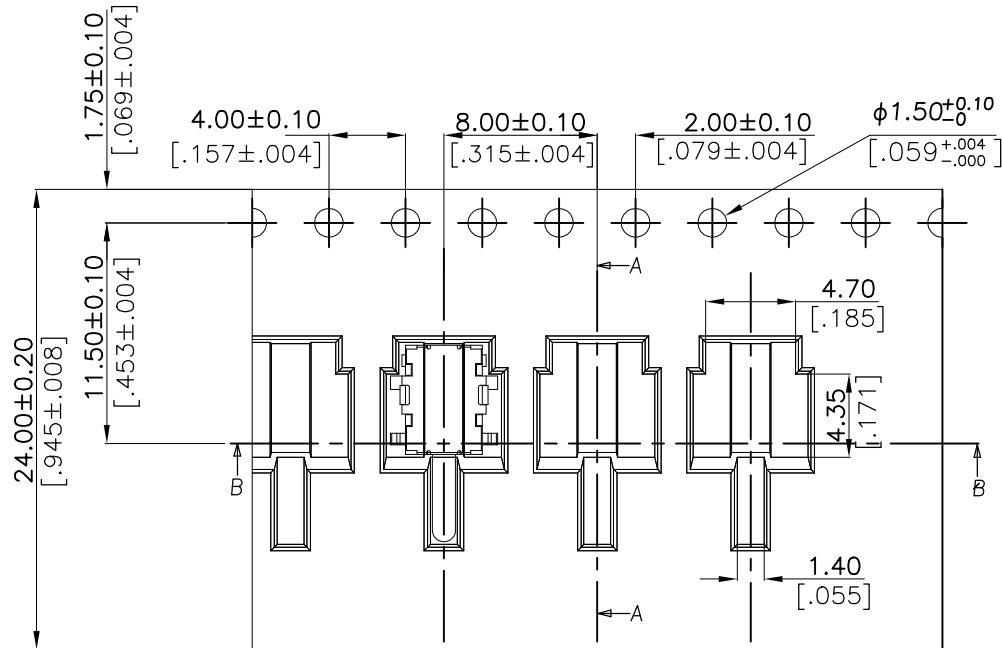
ALL RIGHTS RESERVED.

REVISIONS

P	LTR	DESCRIPTION	DATE	DWN	APVD
	—	SEE SHEET 1	—	—	—

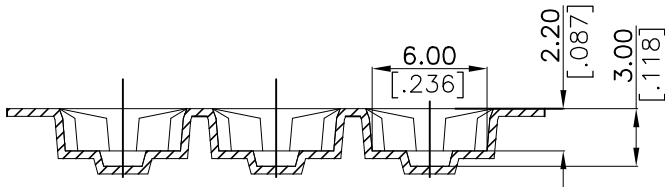
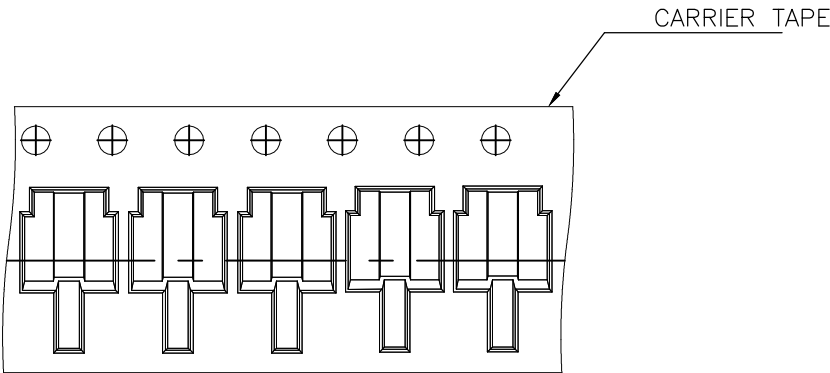
PACKAGING:
3000 SWITCHES PER REEL

THE DIMENSION OF CARRIER TAPE, COVER TAPE AND REEL



Section A—A

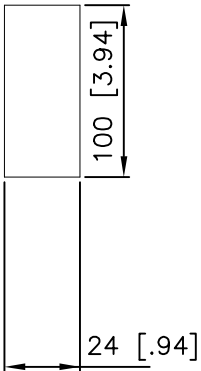
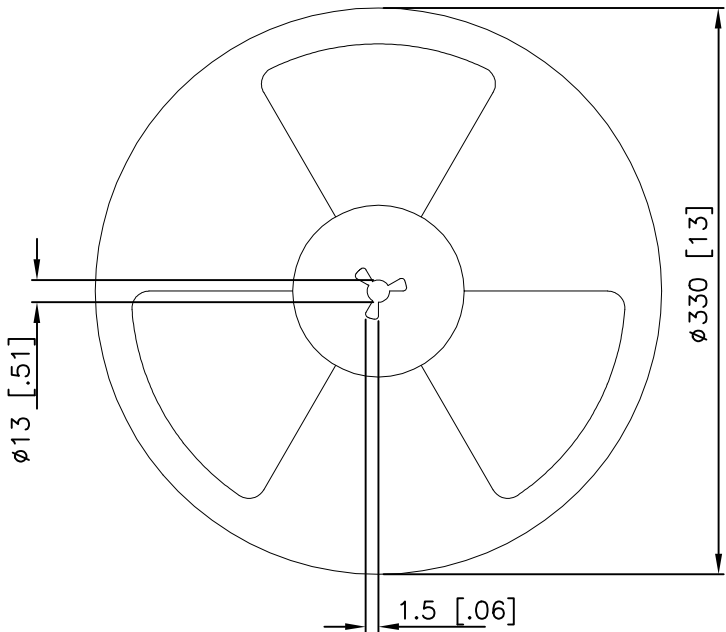
THE DIRECTION OF PILOT HOLES




Pulling-out direction of the tape

Section B—B

DRAWING DIRECTION



THIS DRAWING IS A CONTROLLED DOCUMENT.		DWN GANESH C M 07MAR2018	 TE Connectivity Ltd.		
DIMENSIONS: mm [INCHES]		CHK ALEXANDER SHARPE 07MAR2018			
TOLERANCES UNLESS OTHERWISE SPECIFIED:		APVD ALEXANDER SHARPE 07MAR2018	NAME SWITCH, DETECTOR, JJH SERIES, 5.7X4.0mm, HORIZONTAL, SMT, POSTS		
MATERIAL		PRODUCT SPEC	SIZE A3		
FINISH		APPLICATION SPEC	CAGE CODE 00779		
		WEIGHT	DRAWING NO C-2331392		
		CUSTOMER DRAWING	RESTRICTED TO —		
			SCALE NTS		
			SHEET 3 of 3		
			REV A		