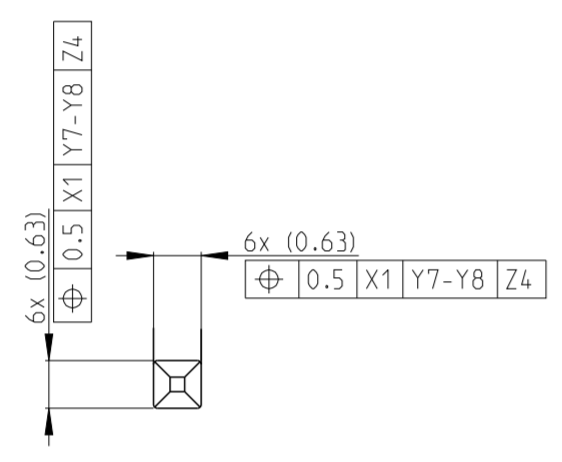
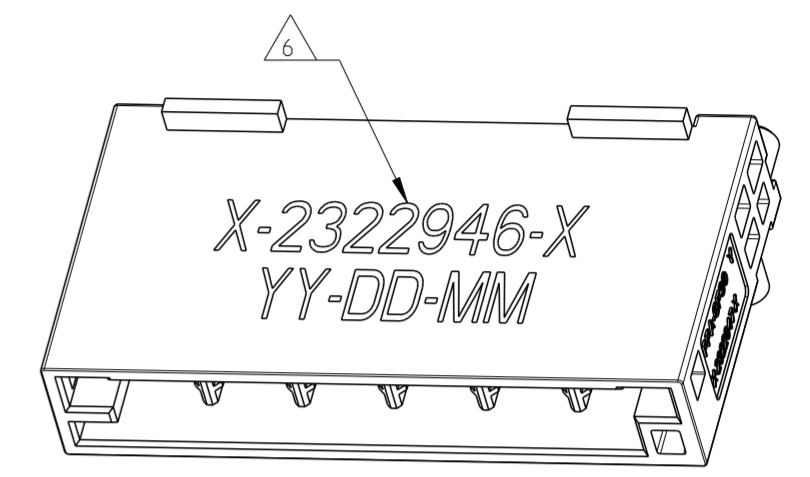
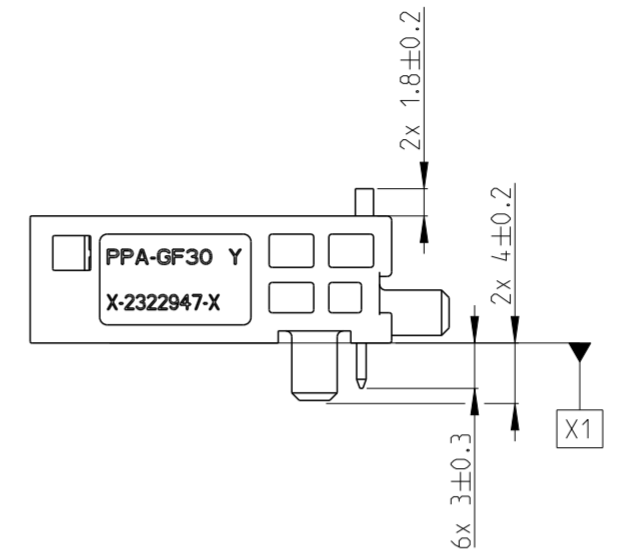
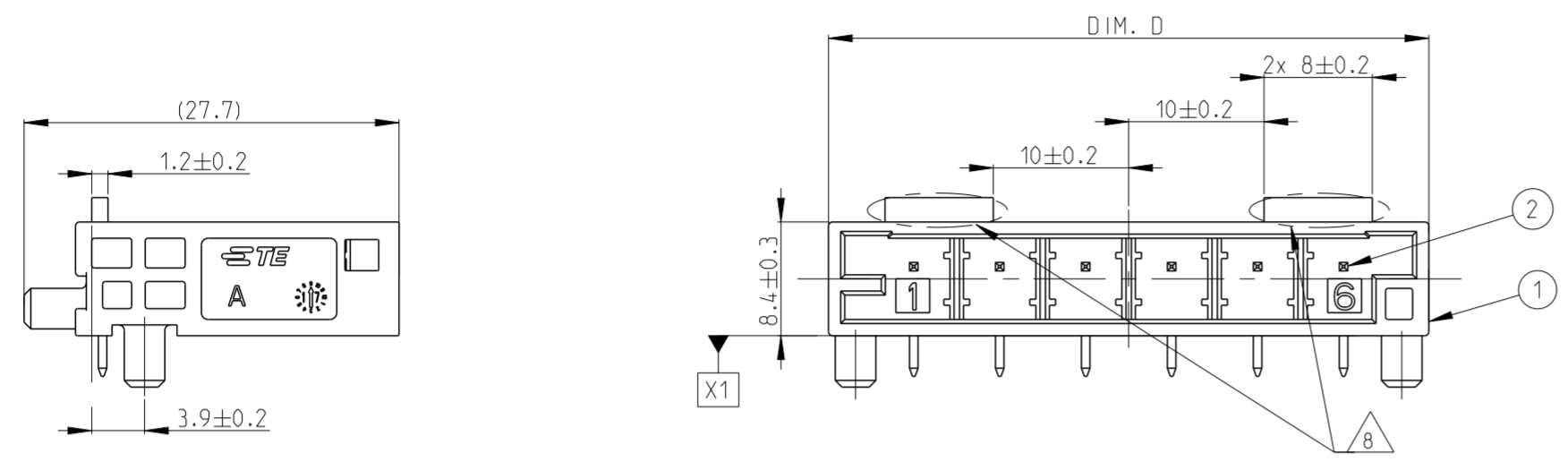
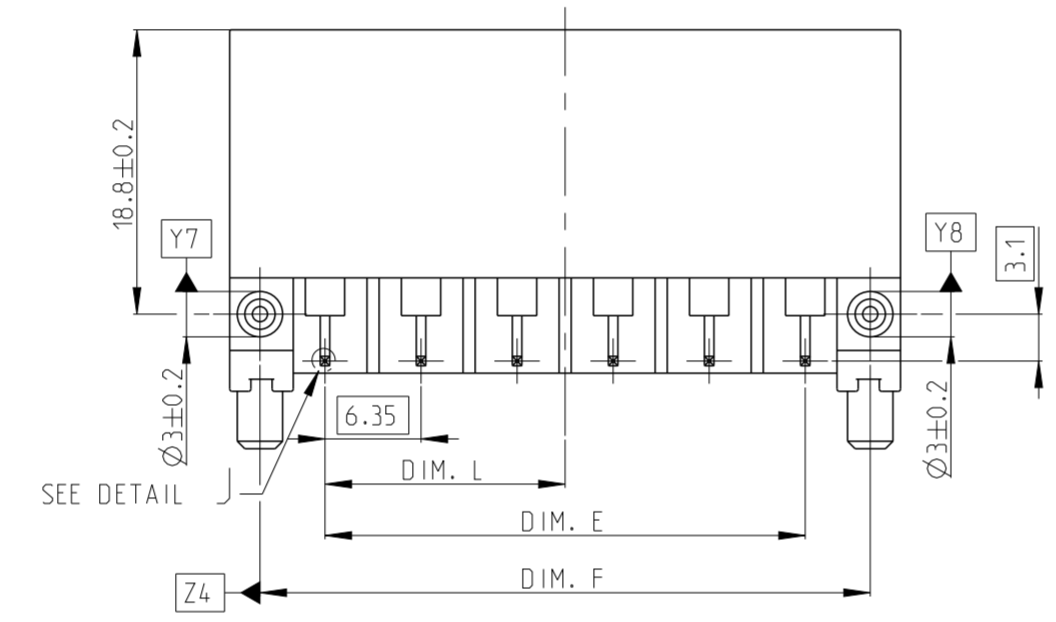


THIS DRAWING IS UNPUBLISHED. RELEASED FOR PUBLICATION 2018
 © COPYRIGHT 2018 BY TE CONNECTIVITY ALL RIGHTS RESERVED.

REVISIONS					
P	LTR	DESCRIPTION	DATE	DWN	APVD
B1		ECN-21-117068	20OCT21	H.S	J.Z
B2		ECN-22-190255	14DEC22	Y.Y	J.Z
B3		ECN-23-234683	12OCT23	Y.Y	J.Z
B4		ECN-23-242303	06DEC23	Y.Y	J.Z

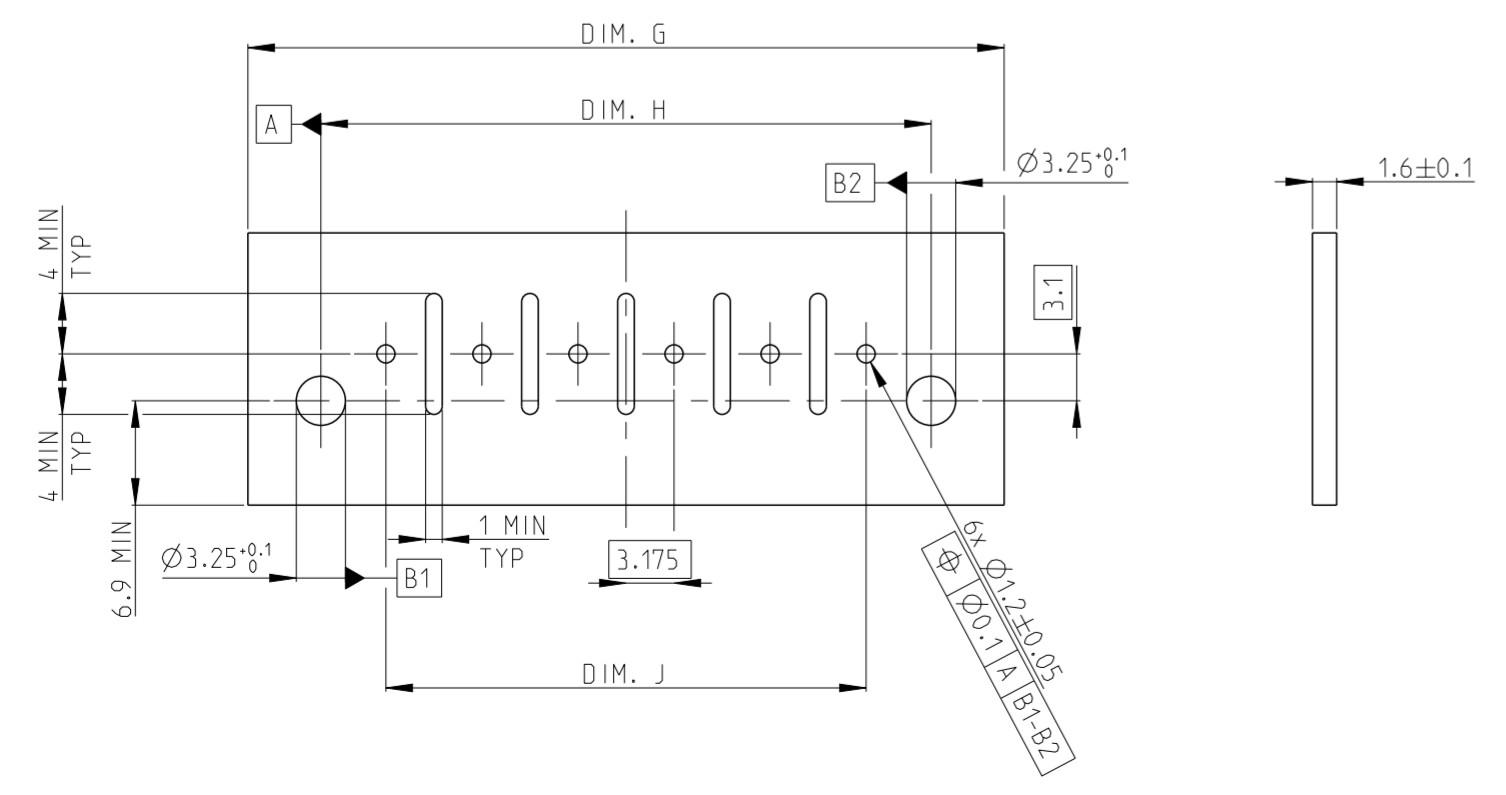


DETAIL SCALE 10:1



2322946-1 AS SHOWN

RECOMMENDED PCB LAYOUT



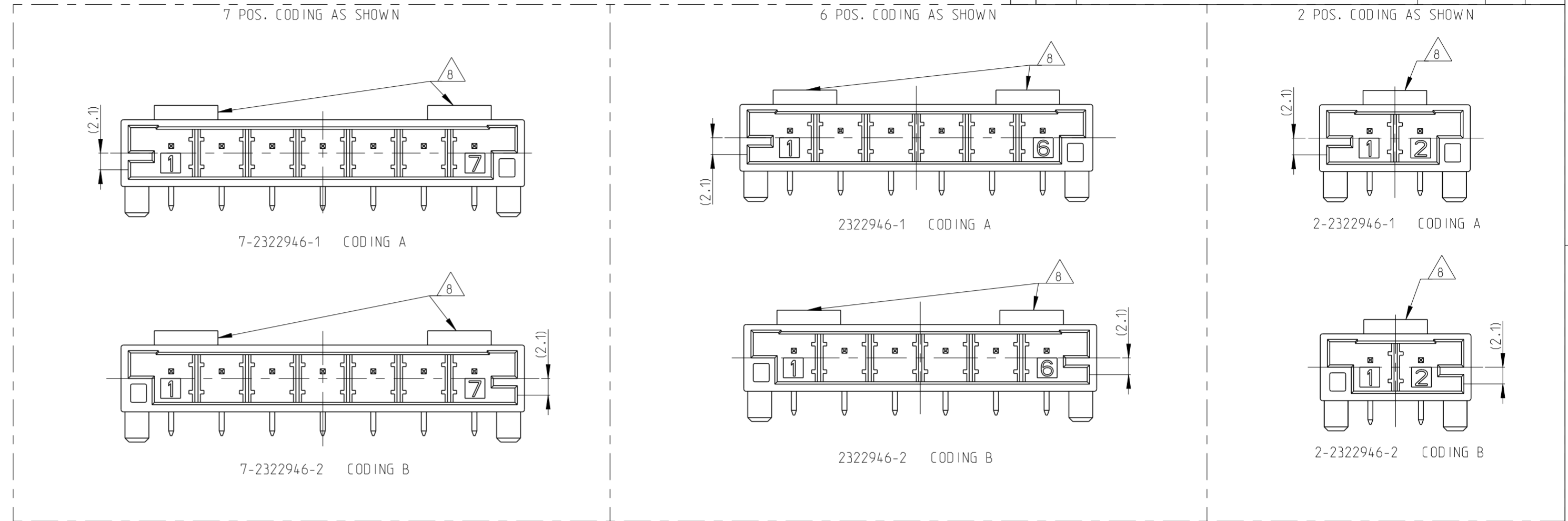
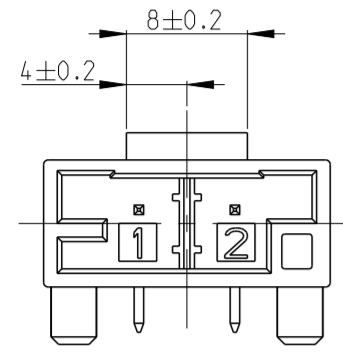
- 1 MATERIAL SEE TABLE
- 2 TERMINAL PLATING : Sn OVER Ni
- 3 MATING PLUG P/N:
6POS: 2322948-1 FOR CODE-A, 2322948-2 FOR CODE-B
2POS: 2-2322948-1 FOR CODE-A, 2-2322948-2 FOR CODE-B
- 4 OPERATION TEMPERATURE: -40°C--+125°C
- 5 RATED OPERATION VOLTAGE: 1000V DC
- 6 1D LASER MARK PRINTING INCLUDES:
(1) TE ASSEMBLY PART NUMBER
(2) PRODUCTION DATE: YY-YEAR, MM-MONTH, DD-DATE
- 7 RECOMMENDED PCB MATERIAL CTI VALUE >400
DEGREE OF POLLUTION IN THE MICRO-ENVIRONMENT: POLLUTION DEGREE 2
- 8 RIBS FOR FIXING, LOCATING AND SPACING DURING THE MODULE ASSEMBLY
PART 2322946-5, 2322946-6, 2-2322946-3, 2-2322946-4 DO NOT CONTAIN THE RIBS

THIS DRAWING IS A CONTROLLED DOCUMENT.		DWN X.LI 19JUL2017	TE Connectivity	
		CHK W.WU 07AUG2017		
DIMENSIONS: mm		APVD J.YIN 10AUG2017	NAME HV DETECTING HEADER ASSY RIGHT ANGLE	
TOLERANCES UNLESS OTHERWISE SPECIFIED:		PRODUCT SPEC 108-32179	SIZE A2	
0-PLC ±0.3		APPLICATION SPEC -	CAGE CODE 100779	DRAWING NO C-2322946
1-PLC ±		WEIGHT -	RESTRICTED TO	
2-PLC ±		CUSTOMER DRAWING	SCALE 2:1	SHEET 1 OF 2
3-PLC ±				REV B4
4-PLC ±				
ANGLES ±				
FINISH -				

THIS DRAWING IS UNPUBLISHED. RELEASED FOR PUBLICATION 2018
 © COPYRIGHT 2018 BY TE CONNECTIVITY ALL RIGHTS RESERVED.

REVISIONS				
P	LTR	DESCRIPTION	DATE	APVD
-	-	SEE SHEET 1	-	-

DIMENSION FOR 2 POS.



QTY REQD PER ASSY	7-2322946-2	7-2322946-1	DIM. J	DIM. H	DIM. K	DIM. G	DIM. F	DIM. E	DIM. D	DIM. L	DESCRIPTION	MATERIAL	COLOR/FINISH	POS. NO.	ITEM
7	1	-	6x 6.35 = 38.10	46.70±0.05	19.05	56 MIN	46.70±0.2	6x 6.35 = 38.10	50.7±0.3	19.05	SQ PIN	Cu ALLOY	Sn OVER Ni	7	2
-	-	1	-	-	-	-	-	-	-	-	7 POS HOUSING CODING B	PPA-GF30	ORANGE	-	1
-	-	-	-	-	-	-	-	-	-	-	7 POS HOUSING CODING A	PPA-GF30	ORANGE	-	1

BOTH PNs PRELIMINARY →

B4

W 210xL320mm	W 275xL375mm	W 275xL375mm	W 275xL375mm	W 275xL375mm	380x100x72mm	W 210xL320mm	W 275xL375mm	SIZE	PACKAGING	DESCRIPTION	MATERIAL	COLOR/FINISH	POS. NO.	ITEM							
2	2	2	2	2	-	-	-	6.35	14.96±0.05	3.175	25 MIN	14.96±0.2	6.35	18.95±0.3	3.175	SQ PIN	Cu ALLOY	Sn OVER Ni	2	2	
-	1	-	1	-	-	-	-	-	-	-	-	-	-	-	-	-	2 POS HOUSING CODING B	PPA-GF30	ORANGE	2	1
1	-	1	-	1	-	-	-	-	-	-	-	-	-	-	-	-	2 POS HOUSING CODING A	PPA-GF30	ORANGE	-	1
-	-	-	-	-	6	6	6	6	6	6	6	6	6	6	6	6	SQ PIN	Cu ALLOY	Sn OVER Ni	6	2
-	-	-	-	-	1	-	-	1	5x 6.35 = 31.75	40.35±0.05	15.875	50 MIN	40.35±0.2	5x 6.35 = 31.75	44.35±0.3	15.875	6 POS HOUSING CODING B	PPA-GF30	ORANGE	6	1
-	-	-	-	-	-	1	1	-	-	1	-	1	-	-	-	-	6 POS HOUSING CODING A	PPA-GF30	ORANGE	-	1

THIS DRAWING IS A CONTROLLED DOCUMENT.		DWN X.LI 19 JUL 2017	TE Connectivity	
DIMENSIONS: mm		CHK W.WU 07 AUG 2017		
TOLERANCES UNLESS OTHERWISE SPECIFIED:		APVD J.YIN 10 AUG 2017	NAME HV DETECTING HEADER ASSY RIGHT ANGLE	
0-PLC ±0.3		PRODUCT SPEC -	SIZE A2	
1-PLC ±		APPLICATION SPEC -	CAGE CODE 00779	
2-PLC ±		WEIGHT -	DRAWING NO C-2322946	
3-PLC ±		CUSTOMER DRAWING	RESTRICTED TO	
4-PLC ±		SCALE 2:1	SHEET 2 OF 2	
ANGLES ±			REV B4	
FINISH -				