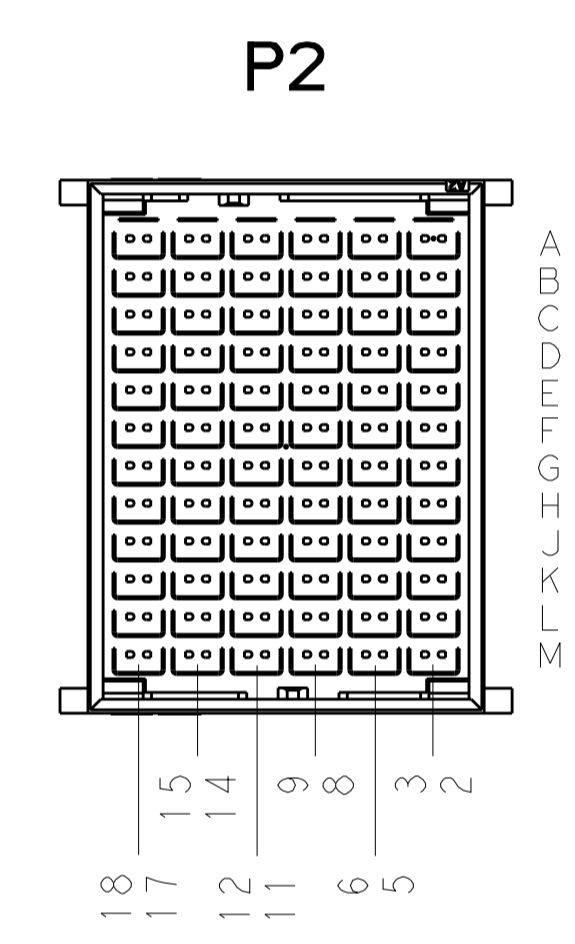
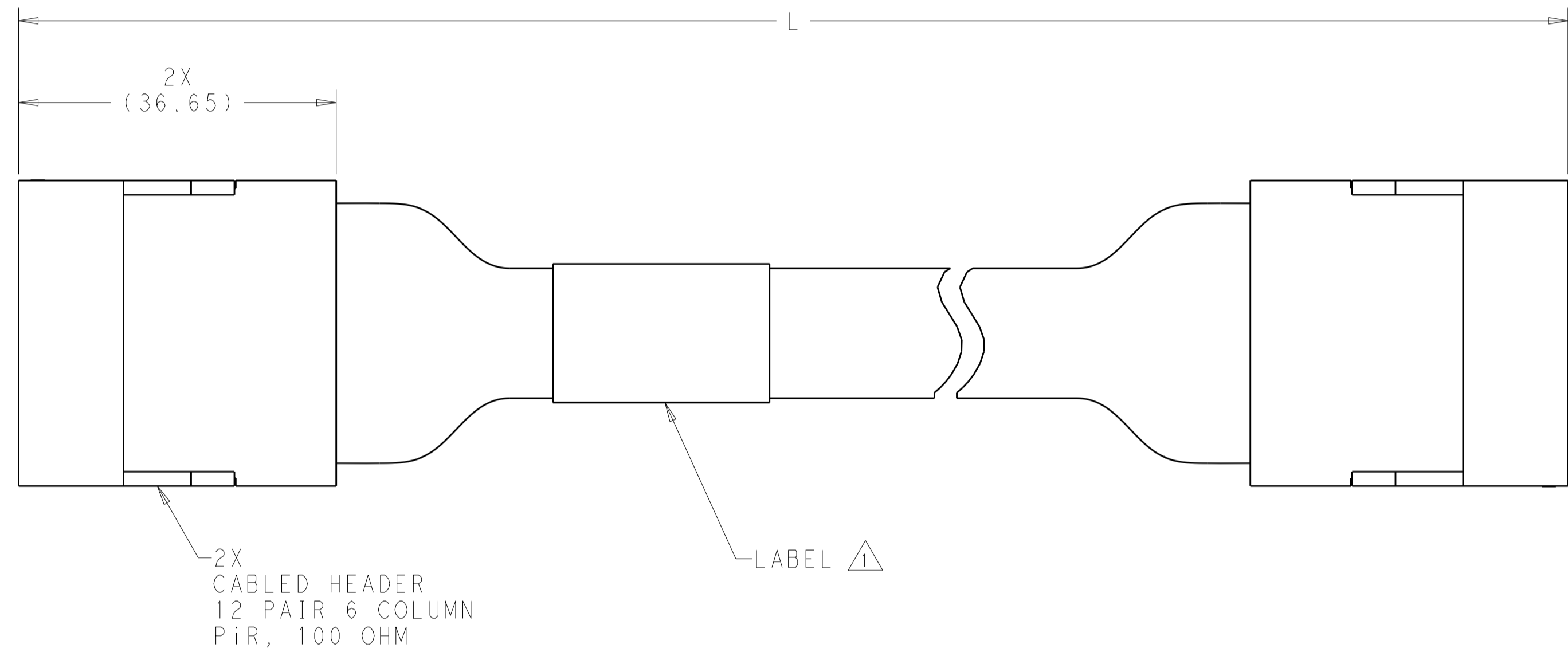
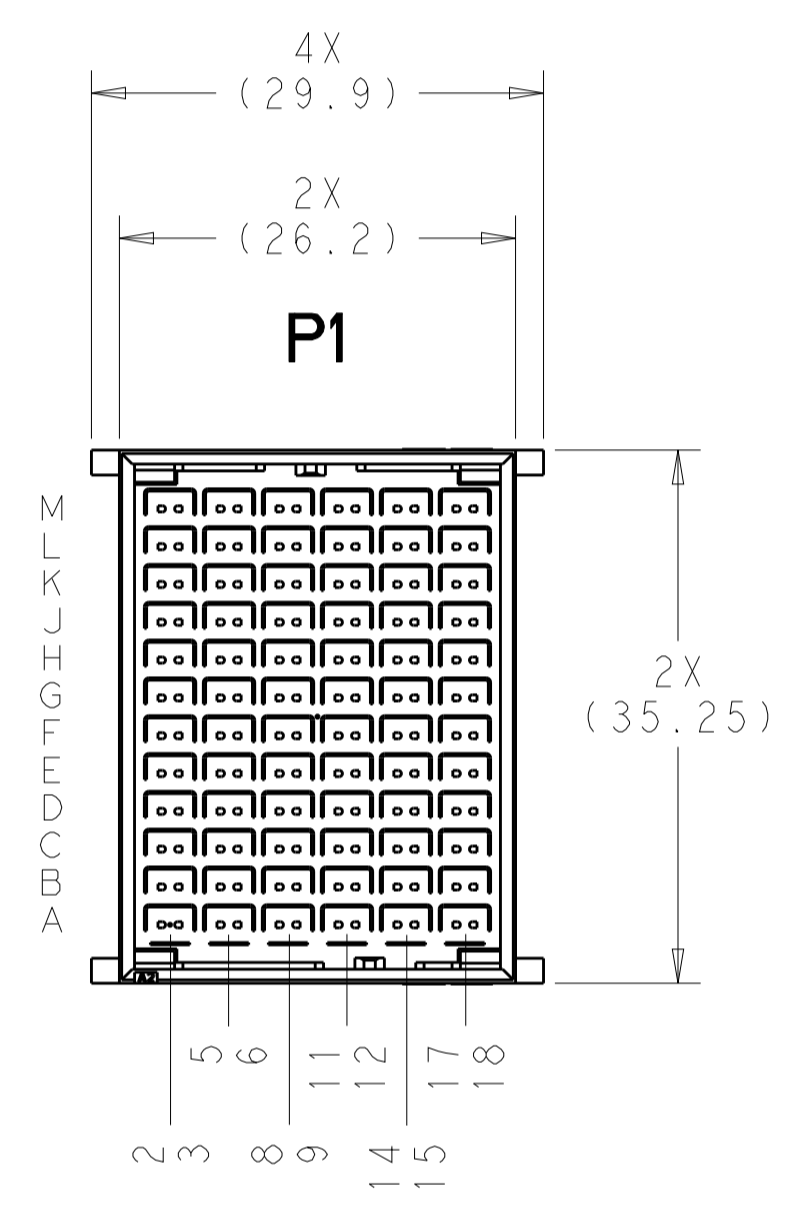
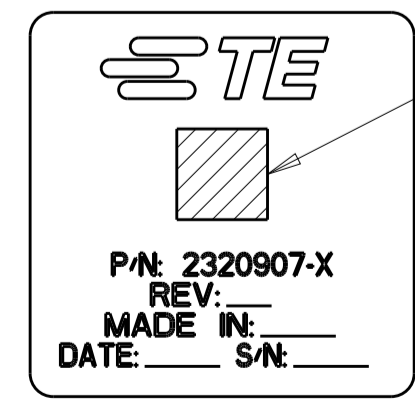


REVISIONS				
P.	LTN	DESCRIPTION	DATE	APVD
1		PROPOSED	08JUN2017	REH KS



△ LABEL INFORMATION:



BARCODE INFO:
 2320907-dxxwyysss
 d=DASH NUMBER
 xx=MANUFACTURING SITE
 US=UNITED STATES, CN=CHINA, MX=MEXICO
 ww=WEEK
 yy=YEAR
 sss=SERIAL NUMBER 000 THRU 999

1508	6-2320907-6
1008	5-2320907-6
508	3-2320907-6
L±3	PART NUMBER

- EACH CABLE ASSEMBLY TESTED FOR CONTINUITY, OPENS AND SHORTS.
- SEE SHEET 2 FOR WIRING DIAGRAM.
- EACH HIGH SPEED CABLET TESTED ON NETWORK ANALYZER, SERIALIZED, AND DATA SAVED.

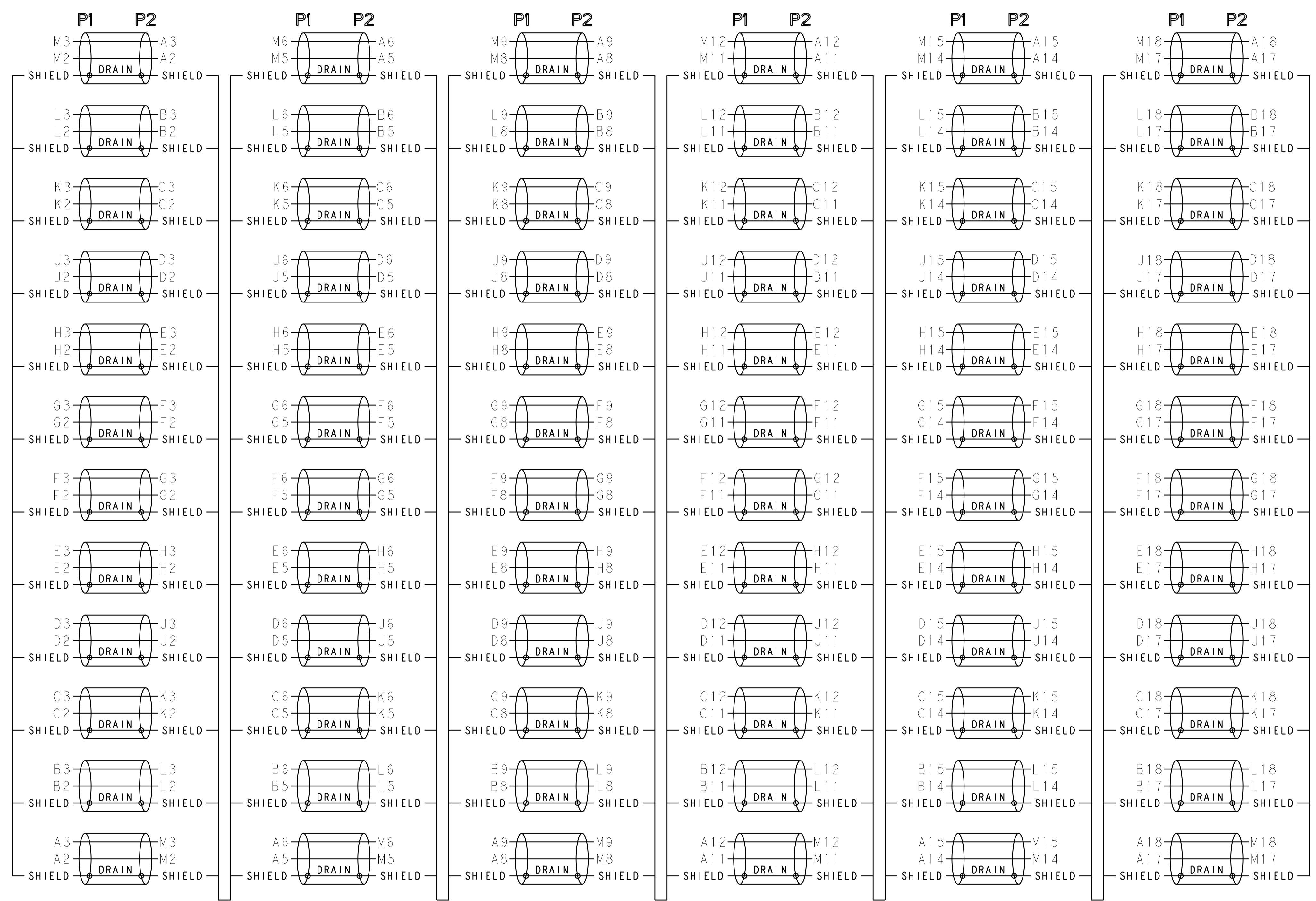
THIS PRODUCT HAS NOT COMPLETED VALIDATION AND QUALIFICATION TESTING

PRELIMINARY NOT RELEASED FOR PRODUCTION

DIMENSIONS:		TOLERANCES UNLESS OTHERWISE SPECIFIED:		APVD		NAME	
mm	0 PLC ±	0 PLC ±	1 PLC ±	APVD	08JUN2017	NAME	CABLE ASSEMBLY, 100 OHM, PiR, 12 PAIR, 6 COLUMN, 20G, 2-2 WIRING, A-M
	1 PLC ±	2 PLC ±	3 PLC ±	CHK	08JUN2017	PRODUCT SPEC	
	4 PLC ±	5 PLC ±	6 PLC ±	APVD	08JUN2017	APPLICATION SPEC	
	ANGLES ±			CHK		RESTRICTED TO	
MATERIAL		FINISH		WEIGHT		SCALE	2:1
				Customer Drawing		SHEET	1 OF 2
						REV	1

REVISIONS				
P.	LTN.	DESCRIPTION	DATE	APVD.
-	-	SEE SHEET 1	-	-

WIRING DIAGRAM



THIS PRODUCT HAS NOT COMPLETED VALIDATION AND QUALIFICATION TESTING

PRELIMINARY NOT RELEASED FOR PRODUCTION

THIS DRAWING IS A CONTROLLED DOCUMENT.		OWN: HAMNER 08JUN2017	 TE Connectivity
DIMENSIONS: mm		CHK: K. SAMMON 08JUN2017	
		APVD: K. SAMMON 08JUN2017	NAME: CABLE ASSEMBLY, 100 OHM, PiR, 12 PAIR, 6 COLUMN, 20G, 2-2 WIRING, A-M
TOLERANCES UNLESS OTHERWISE SPECIFIED:		PRODUCT SPEC	
0 PLC ± 1 PLC ± 2 PLC ± 3 PLC ± 4 PLC ± ANGLES ±		APPLICATION SPEC	RESTRICTED TO
MATERIAL		WEIGHT	SIZE: A1
		Customer Drawing	SCALE: 2:1 SHEET 2 OF 2 REV 1