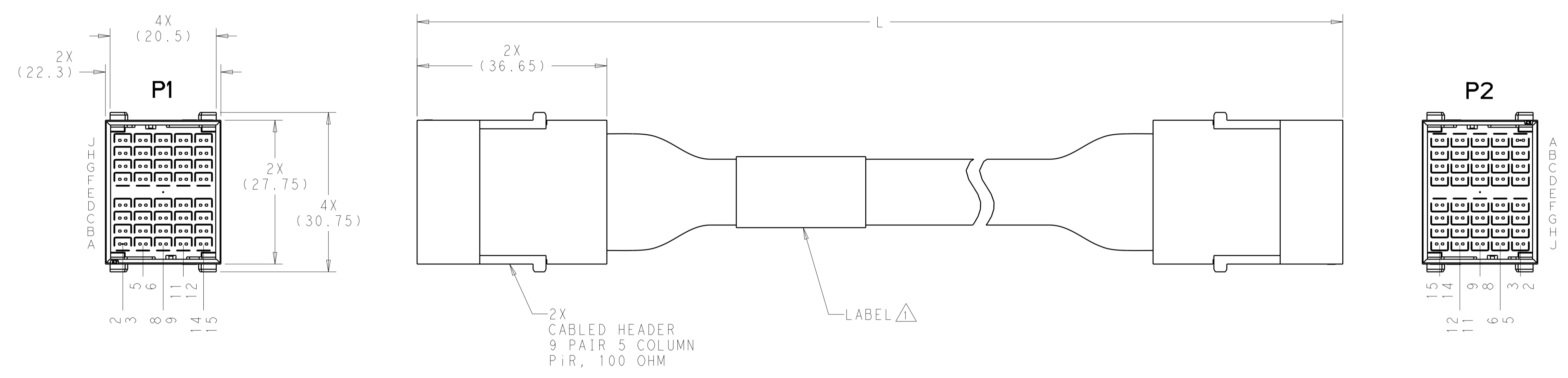
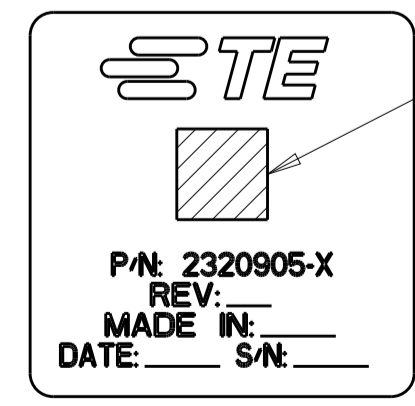


REVISIONS				
P.	LTN	DESCRIPTION	DATE	APVD
1		PROPOSED	09JUN2017	REH KS



**△ LABEL INFORMATION:**



BARCODE INFO:  
 2320905-dxxwyysss  
 d=DASH NUMBER  
 xx=MANUFACTURING SITE  
 US=UNITED STATES, CN=CHINA, MX=MEXICO  
 ww=WEEK  
 yy=YEAR  
 sss=SERIAL NUMBER 000 THRU 999

1508	6-2320905-6
1008	5-2320905-6
508	3-2320905-6
L±3	PART NUMBER

- EACH CABLE ASSEMBLY TESTED FOR CONTINUITY, OPENS AND SHORTS.
- SEE SHEET 2 FOR WIRING DIAGRAM.
- EACH HIGH SPEED CABLET TESTED ON NETWORK ANALYZER, SERIALIZED, AND DATA SAVED.

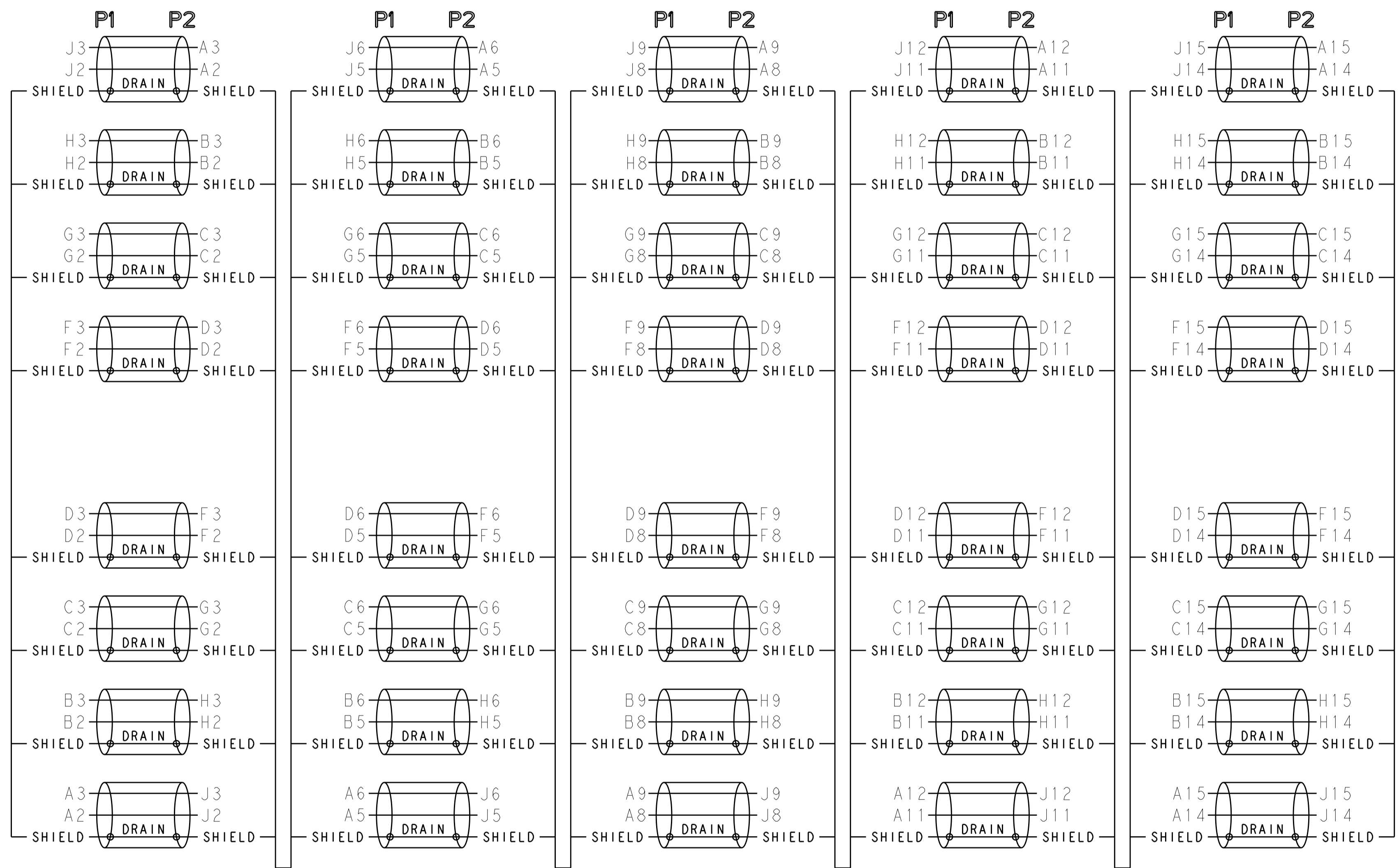
**THIS PRODUCT HAS NOT COMPLETED VALIDATION AND QUALIFICATION TESTING**

**PRELIMINARY NOT RELEASED FOR PRODUCTION**

DIMENSIONS:		TOLERANCES UNLESS OTHERWISE SPECIFIED:		MATERIAL:		FINISH:		WEIGHT:		RESTRICTED TO:	
mm	0 PLC	±									
	1 PLC	±									
	2 PLC	±									
	3 PLC	±									
	4 PLC	±									
	ANGLES	±									
Customer Drawing		SCALE 2:1		SHEET 1 OF 2		REV 1					

REVISIONS				
P.	LTN.	DESCRIPTION	DATE	APVD.
-	-	SEE SHEET 1	-	-

### WIRING DIAGRAM



**THIS PRODUCT HAS NOT COMPLETED VALIDATION AND QUALIFICATION TESTING**

**PRELIMINARY NOT RELEASED FOR PRODUCTION**

THIS DRAWING IS A CONTROLLED DOCUMENT.		OWN: HAMNER 09JUN2017	TE Connectivity
DIMENSIONS: mm		CHK: K. SAMMON 16JUN2017	
TOLERANCES UNLESS OTHERWISE SPECIFIED:		APVD: K. SAMMON 16JUN2017	NAME: CABLE ASSEMBLY, 100 OHM, PiR, 9 PAIR, 5 COLUMN, 20G, 2-2 WIRING, A-J
0 PLC ± 1 PLC ± 2 PLC ± 3 PLC ± 4 PLC ± ANGLES ±		PRODUCT SPEC	
MATERIAL		APPLICATION SPEC	RESTRICTED TO
FINISH		WEIGHT	SIZE: A1
		Customer Drawing	CAGE CODE: C=2320905
		SCALE: 2:1	SHEET 2 OF 2
			REV 1