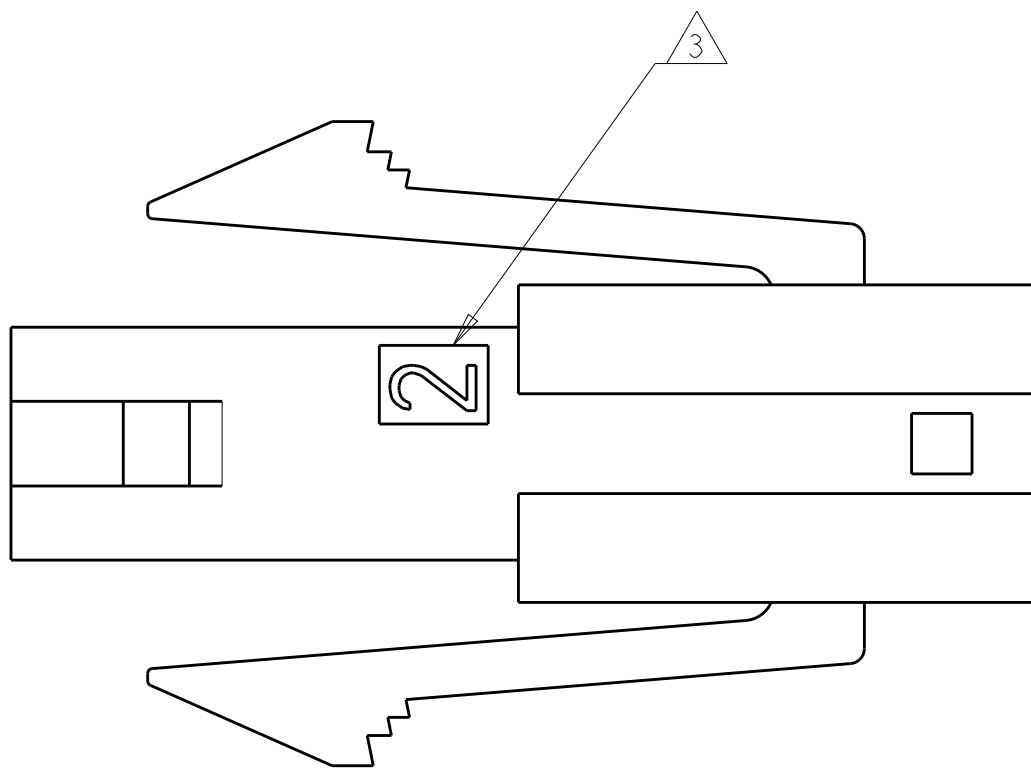
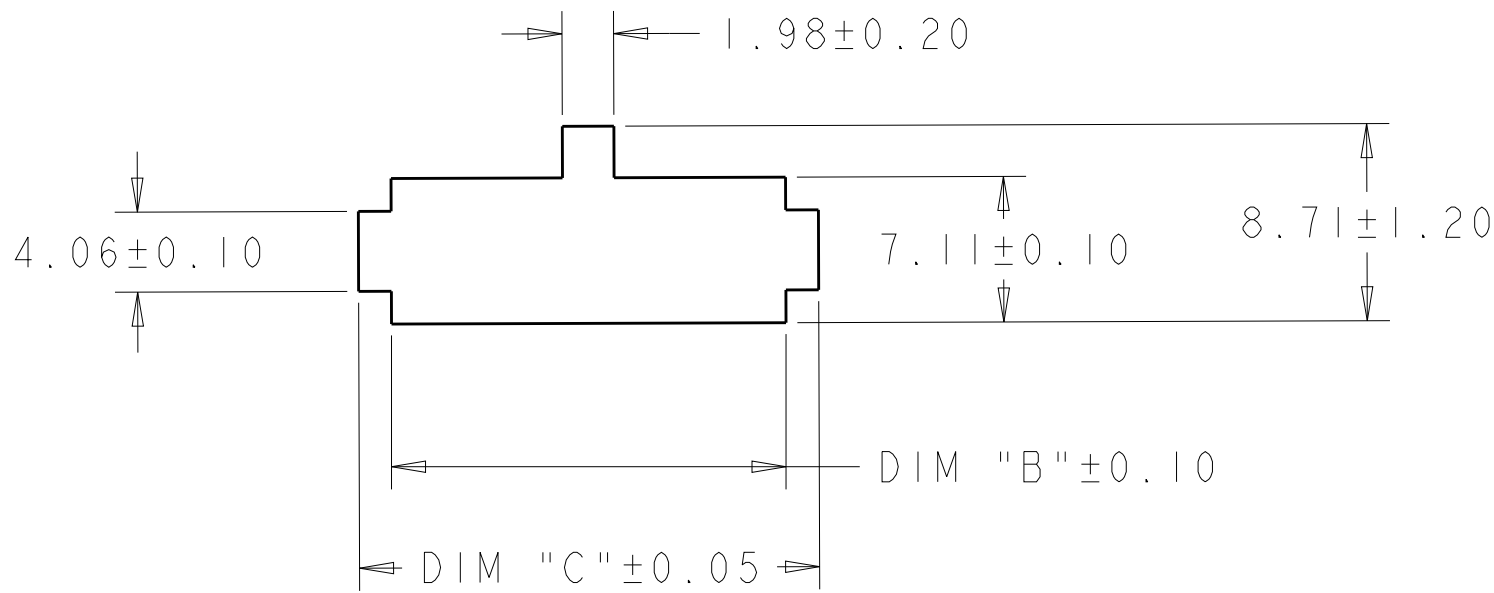
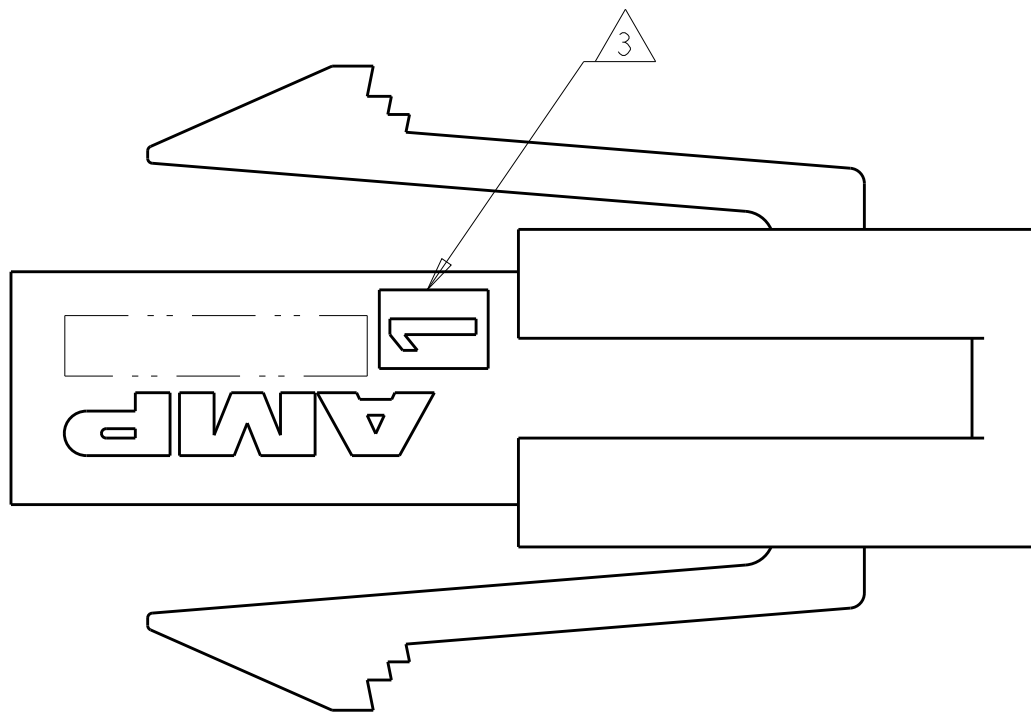
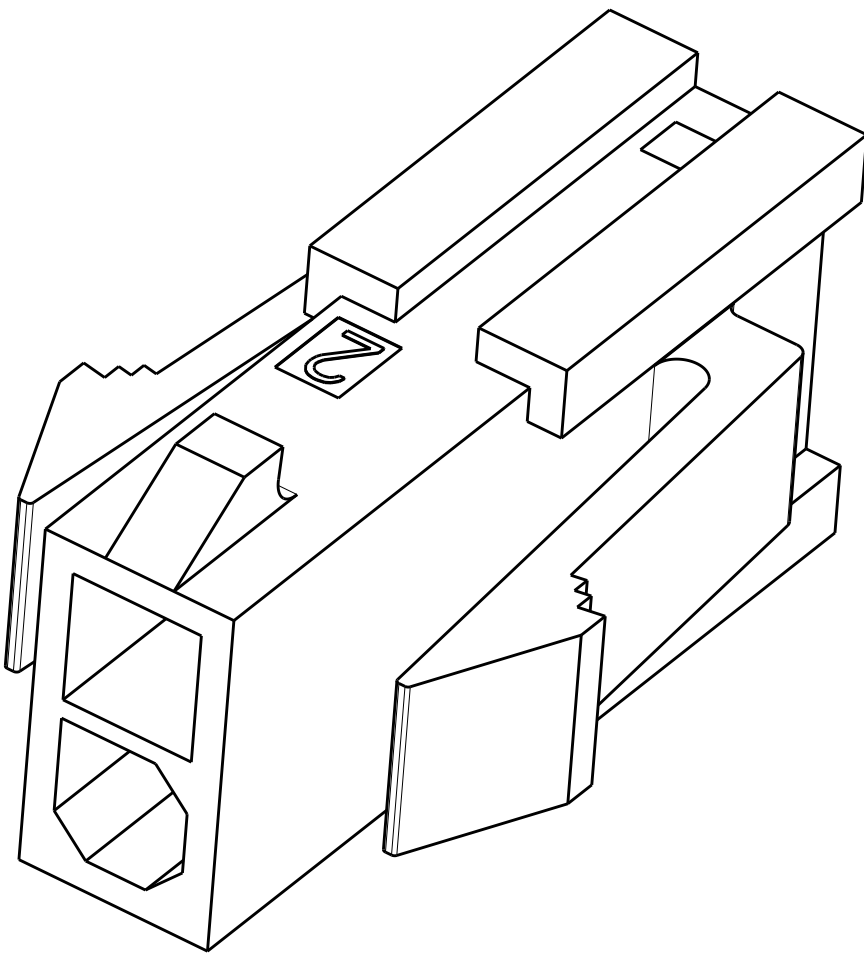
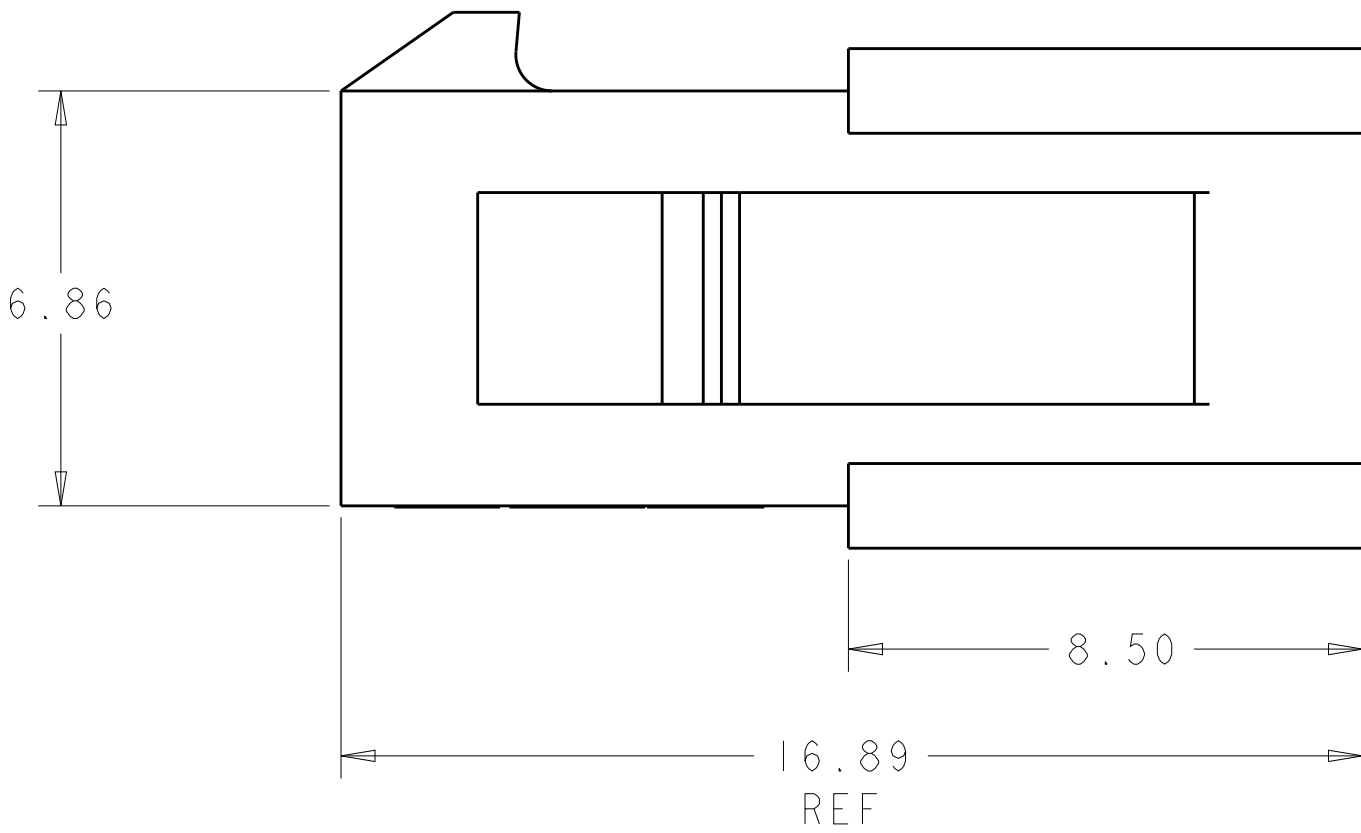
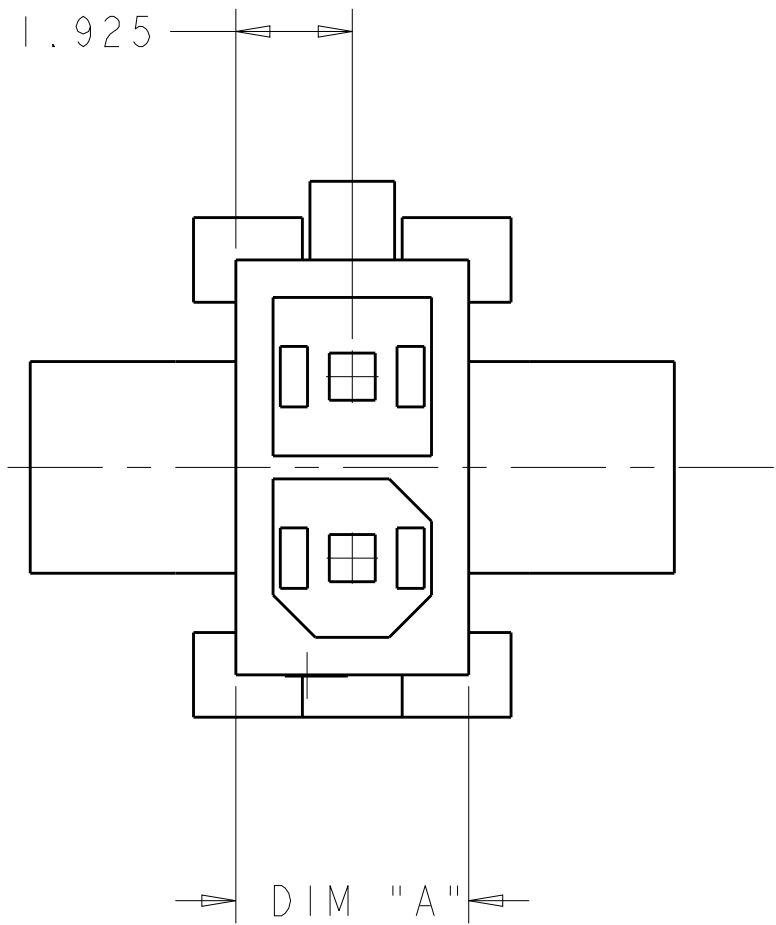


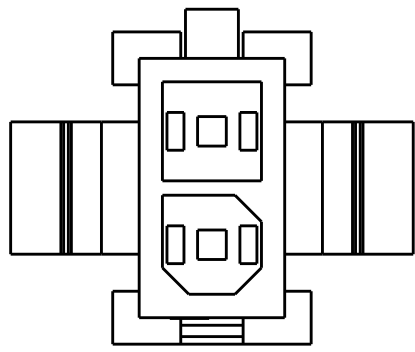
REVISIONS					
P	LTR	DESCRIPTION	DATE	DWN	APVD
A1		REVISED PER ECR-18-007792	21MAY2018	JB	DZ
B		REVISED PER ECR-18-014008	04SEP2018	JB	DZ



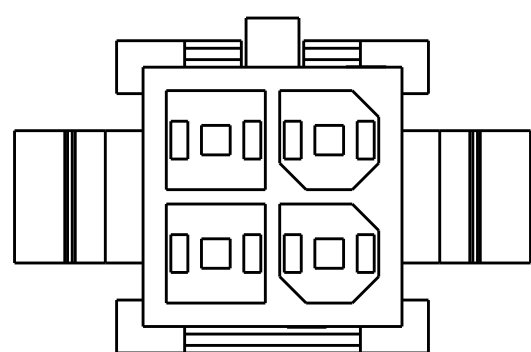
- △ RECOMMENDED PANEL THICKNESS 1.57-2.3
- 2 PANEL MUST BE PUNCHED SO THAT HOUSING ENTERS THE PANEL IN THE SAME DIRECTION AS THE PUNCH.
- △3 CIRCUIT IDENTIFIER LOCATED APPROXIMATELY AS SHOWN,
- △4 MATERIAL PA66 UL94-V0, GW, COLOR-NATURAL



PANEL CUT OUT △






2 POSITION



4 POSITION

UL94-V0 GWT △4	10.88	7.20	6.85	4	2315758-4
	7.88	4.20	3.85	2	2315758-2
MATERIAL	DIM "C"	DIM "B"	DIM "A"	NO. OF POSITIONS	PART NUMBER

THIS DRAWING IS A CONTROLLED DOCUMENT.		DWN BASAVARAJA D A 02MAR2018	 TE Connectivity					
DIMENSIONS:		CHK JYOTIRMAYA 02MAR2018						
mm	TOLERANCES UNLESS OTHERWISE SPECIFIED:		NAME	PLUG HOUSING, DUAL ROW, PANEL MOUNT, MICRO MATE-N-LOK				
	APVD DANIEL ZHANG 02MAR2018							
	0 PLC	±	PRODUCT SPEC	SIZE		CAGE CODE	DRAWING NO	RESTRICTED TO
	1 PLC	±						
2 PLC	±	±0.13	108-1836	A100779C=2315758				
3 PLC	±	±	APPLICATION SPEC					
4 PLC	±	±	114-13000	SCALE 8:1 SHEET 1 OF 1 REV B				
ANGLES	±	±	WEIGHT					
MATERIAL	FINISH	-	CUSTOMER DRAWING					
	-	-						