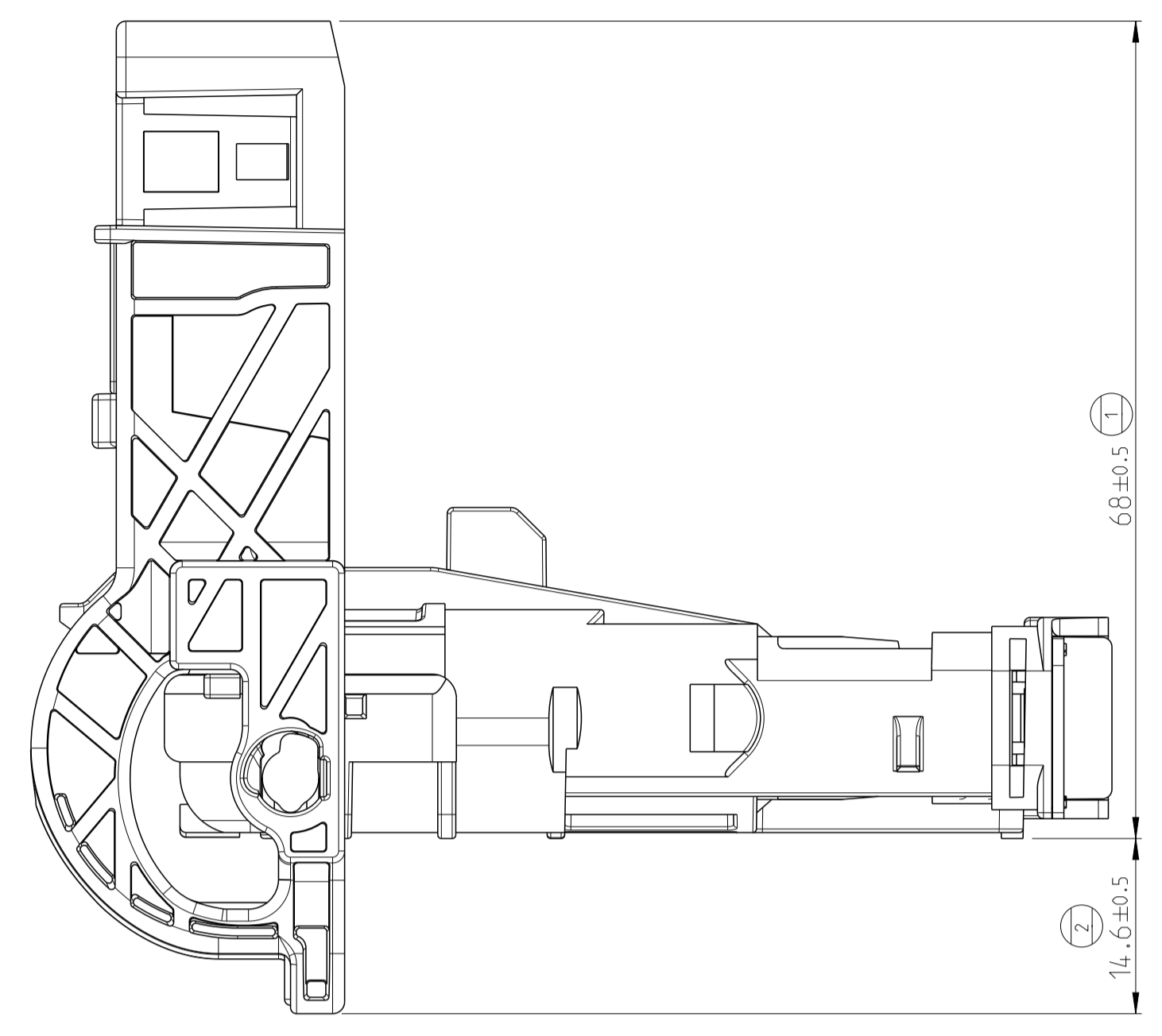
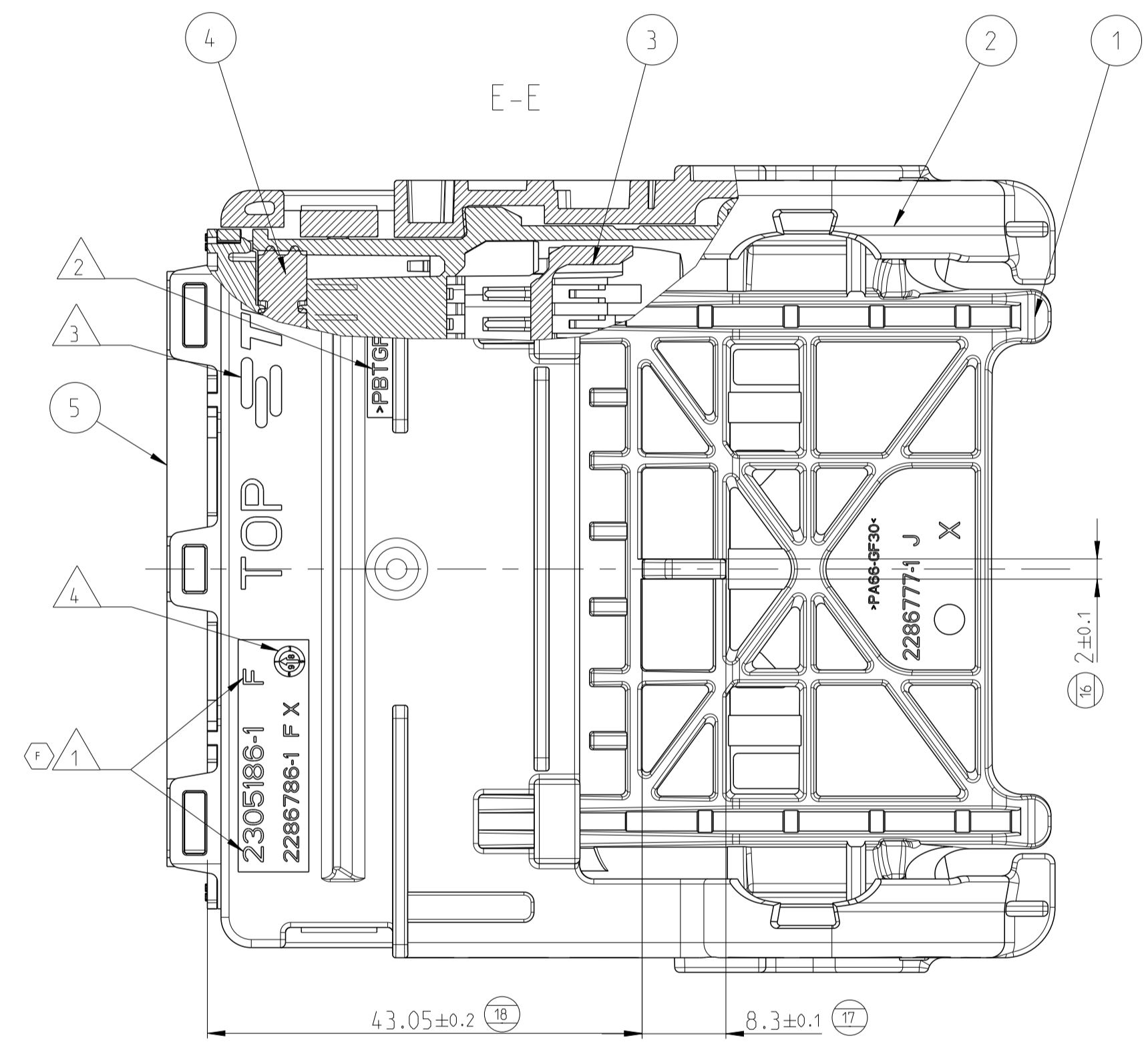
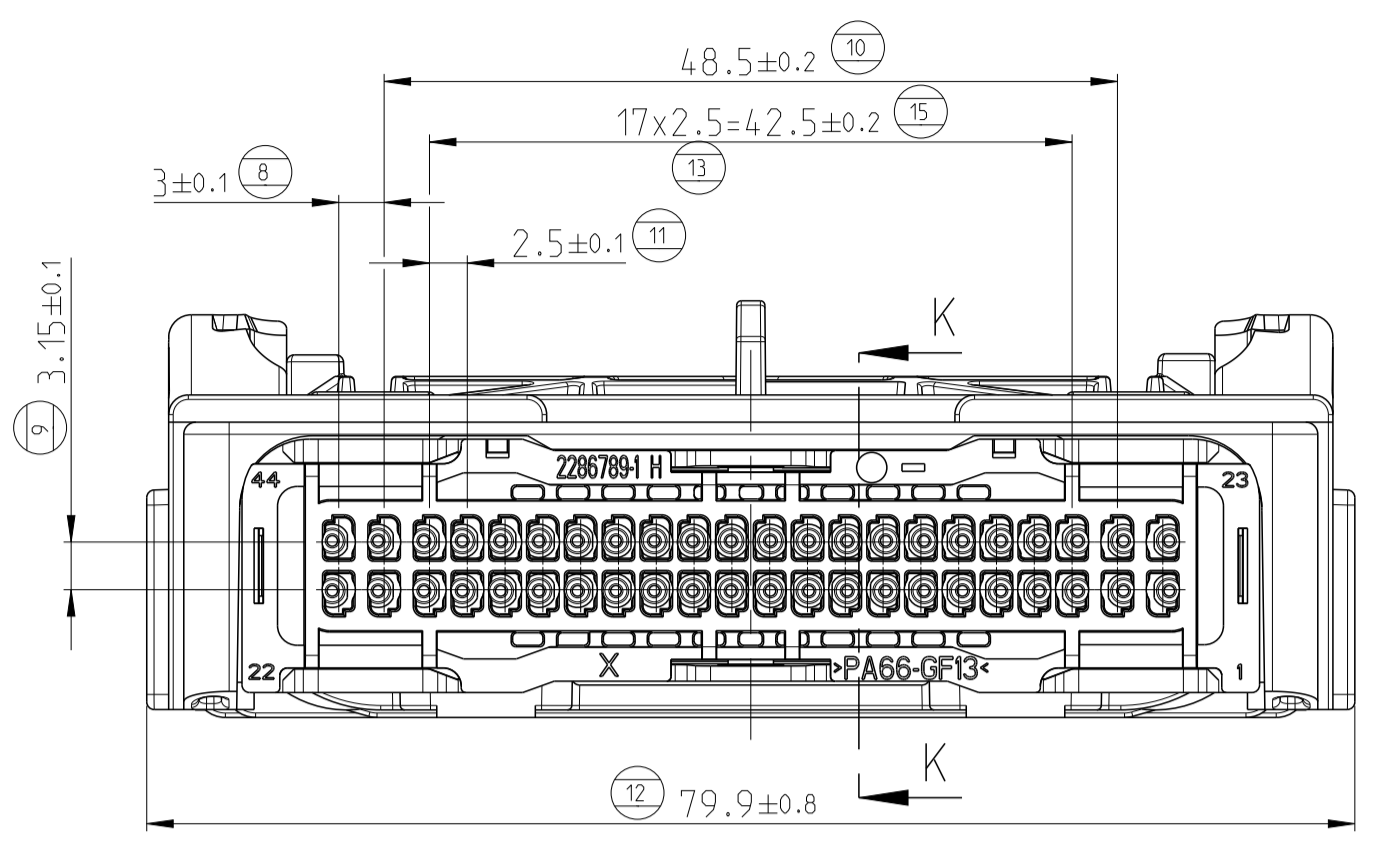
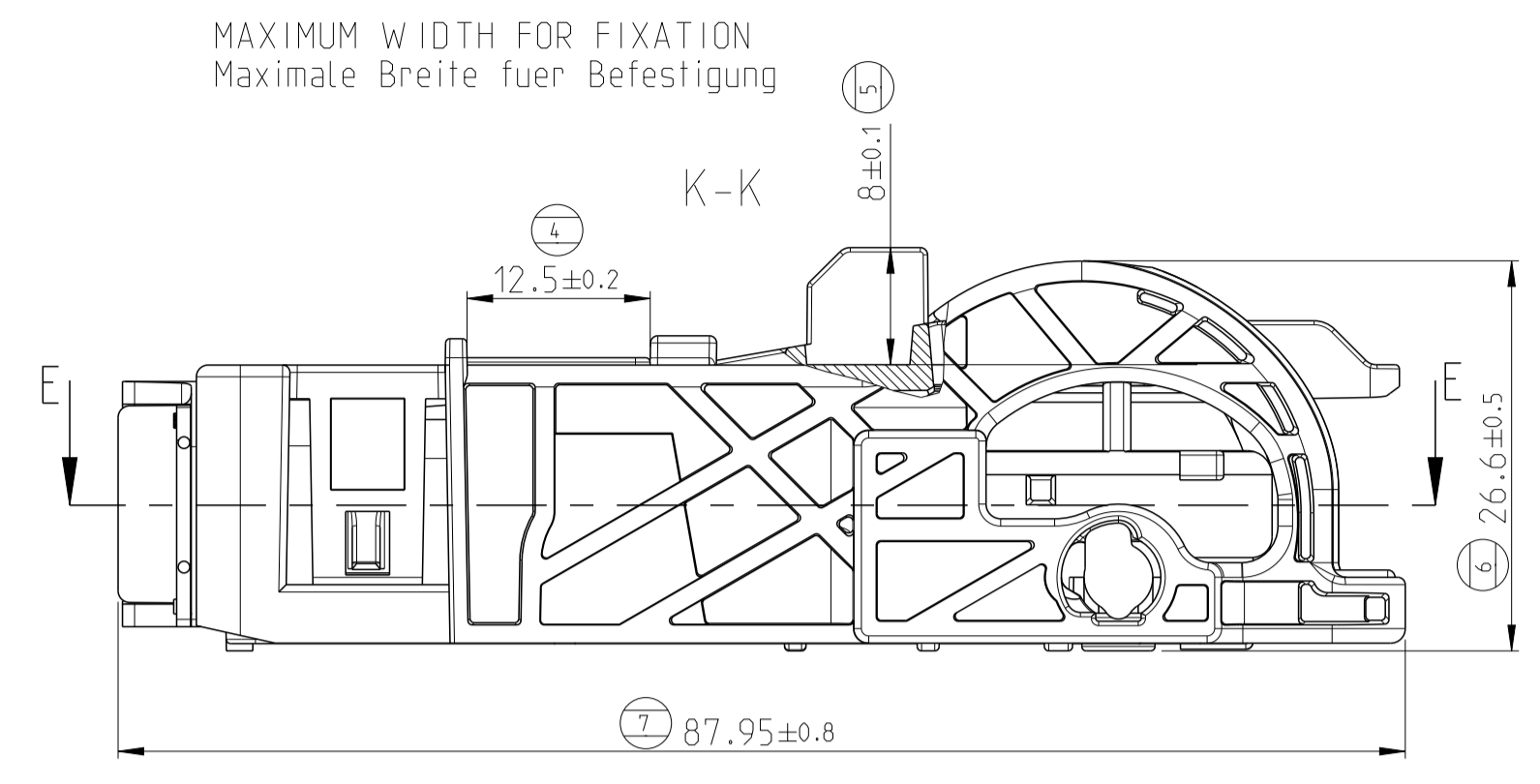
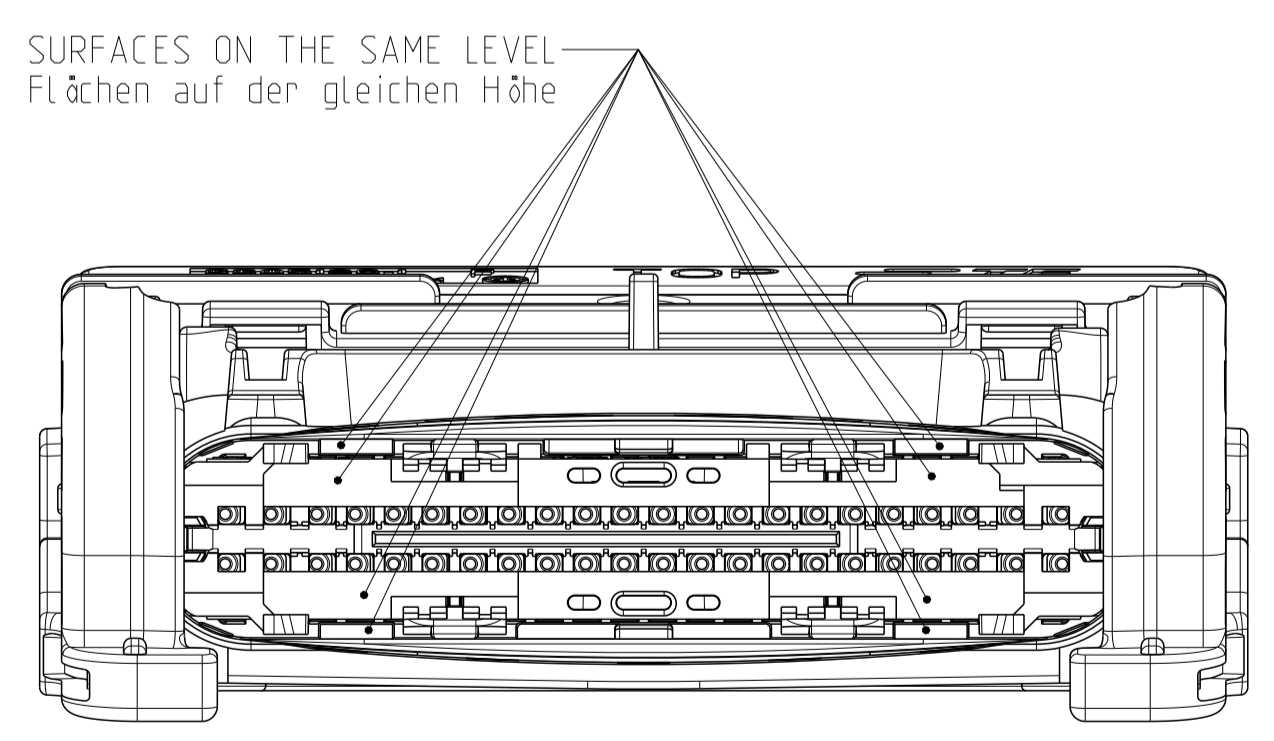
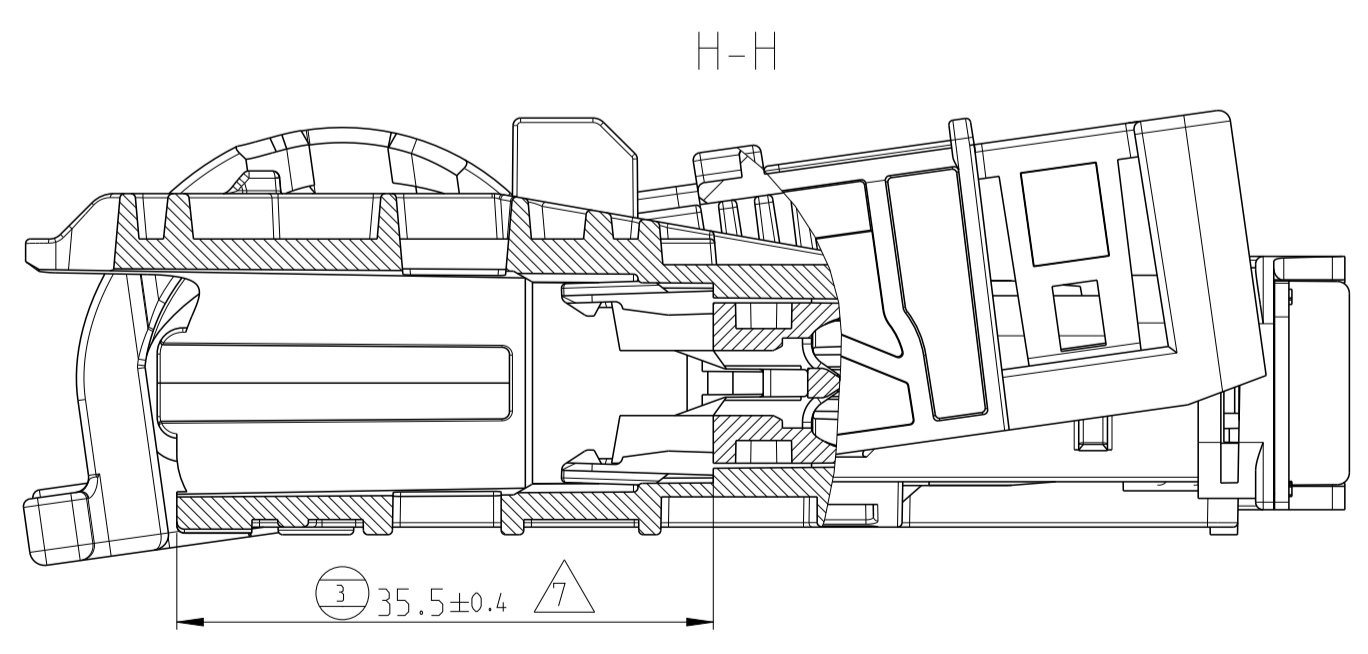


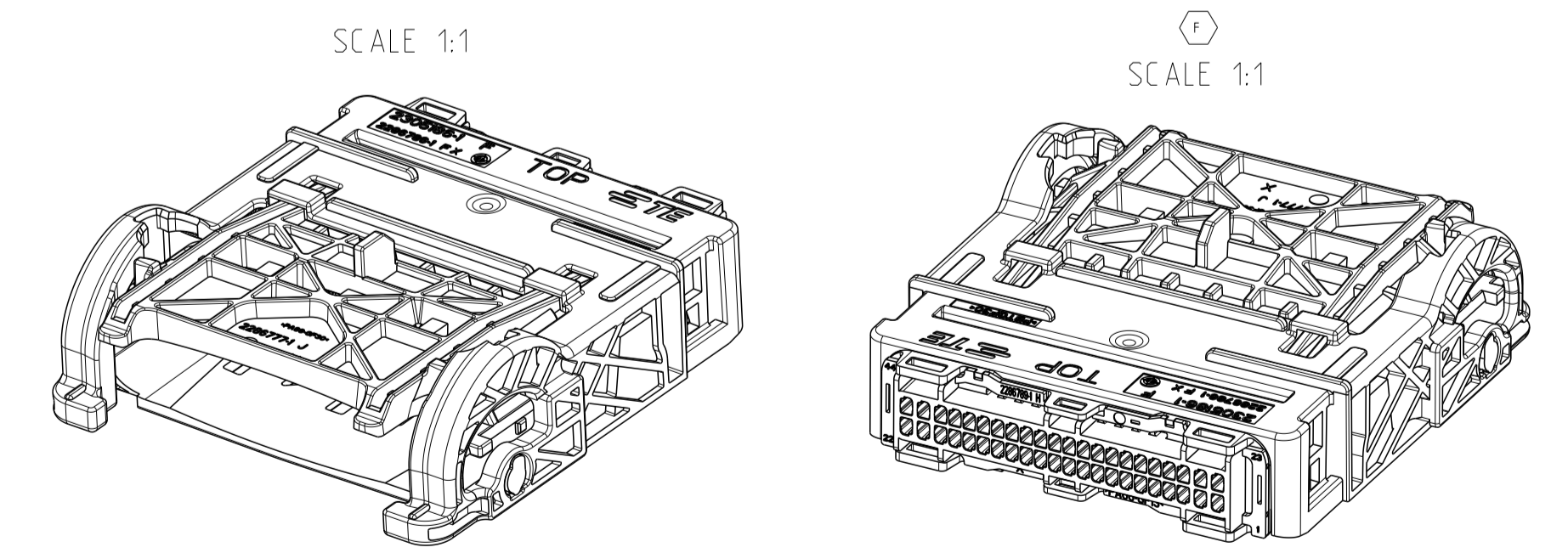
MATING CONDITION  
 Montagezustand  
 LEVER IN OPEN POSITION  
 Hebel in geöffneter Stellung



DELIVERY CONDITIONS:  
 Lieferzustand:  
 SAME DELIVERY CONDITION TO OEM AFTER CONTACT ASSEMBLY:  
 Gleicher Lieferzustand zum Endkunde nach der Kontaktmontage:  
 LEVER IN PRE - LOCKED POSITION  
 Hebel in Vorraststellung  
 SPACER IN PRE LOCK POSITION  
 Spacer in Vorraststellung



- NOTES:  
 Bemerkungen:
- 1 TE CONNECTIVITY (TE) ASSEMBLY NUMBER, REVISION  
 TE Connectivity (TE) Baugruppennummer, Revision
  - 2 MATERIAL MARKING ACCORDING TO VDA 260  
 Materialkennzeichnung nach VDA 260
  - 3 TE CONNECTIVITY LOGO  
 TE Connectivity Logo
  - 4 PRODUCTION DATE OF COMPONENT  
 Produktionsdatum des Bauteils
  - 5 LAYER PACKAGING IN CORRUGATED BOX  
 Lagenverpackung im Versandkarton
  - 6 CAVITIES MATED WITH DIRECT CONNECTION SYSTEM CONTACT  
 SEE TE CONNECTIVITY DRAWING 2236793  
 WIRESIZE: 0.5 - 0.75mm<sup>2</sup>; AWG 18-20  
 Kontaktkammer passend fuer direkt kontaktierungs System Kontakt  
 siehe TE Connectivity Zeichnung 2236793  
 Drahtgrossenbereich: 0.5 - 0.75mm<sup>2</sup>; AWG 18-20
  - 7 DISTANCE OF SPACER INTO PRELOCK POSITION  
 Abstand des Spacer in die Vorraststellung
  - 8 Applicable dummy plug PN and it's revision : 2289990-1, Rev C  
 Anwendbarer Dummy-Stecker PN und es ist Revision: 2289990-1, Rev C



TE ORDER NO.	REV.	QUANTITY	MAT.	COLOUR/FARBE SURFACE/Oberfl.	DESCRIPTION	REV.	ITEM
2305186-1	F	1	PA66 GF13	BLACK Schwarz	SEAL HOLDER Dichtungshalter	H/8	5
		1	HTV	BLUE Blau	FAMILY SEAL Familiendichtung	F	4
		1	PA66 GF50	BLACK Schwarz	SPACER Spacer	J	3
		1	PBT GF30	BLACK Schwarz	LEVER Hebel	F	2
		1	PA66 GF30	GREY Grau	CAVITY HOUSING Kammergehäuse	J	1

DIESE ZEICHNUNG IST EIN KONTROLLIERTES DOKUMENT. BEMESSUNGEN UND TOLERANZEN GEMAESS GPS (ISO STANDARDS).		TOLERANCING ISO 8015 TOLERIERUNG ISO 8015	
THIS DRAWING IS A CONTROLLED DOCUMENT. DIMENSIONING AND TOLERANCING PER GPS (ISO STANDARDS).		DWN S. Helm 19AUG2014	
DIMENSIONS: MASSENHEITEN: mm		CHK F. Eltrod 20AUG2014	
TOLERANCES UNLESS OTHERWISE SPECIFIED: ALL GENERAL TOLERANCES		APVD E. Eberwein 28AUG2014	
MATERIAL: SEE TABLE		NAME 44 WAY DIRECT CONNECTOR 44 pol. Direktkontaktierungs Stecker	
FINISH/SURFACE/FARBE: SEE TABLE		SIZE A1	
WEIGHT: 69.8g		CAGE CODE 00779	
Customer Drawing		DRAWING NO. ©=2305186	
		REVISIONS: 1 OF 1	