

P	LTR	DESCRIPTION	DATE	DWN	APVD
	A	RELEASE TO PRODUCTION	23JAN2017	RDH	RDH
	A1	REV PER ECR-17-003014	01MAR2017	RDH	RDH
	B	REV PER ECR-18-001932	28JUN2018	RDH	RDH

D

D

C

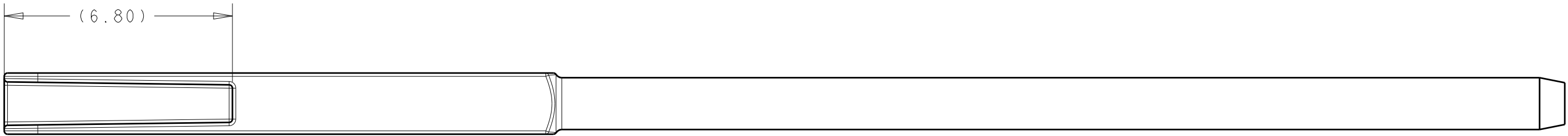
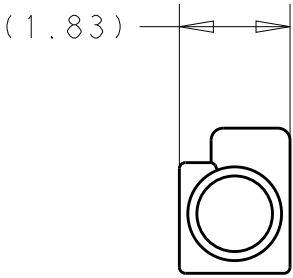
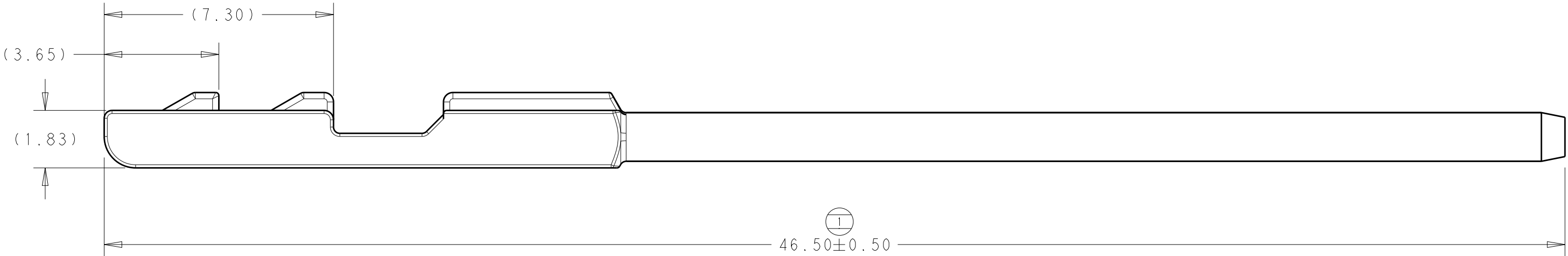
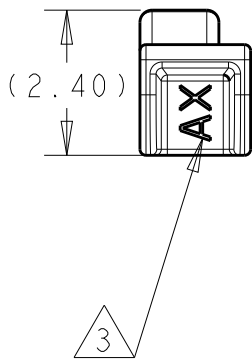
C

B

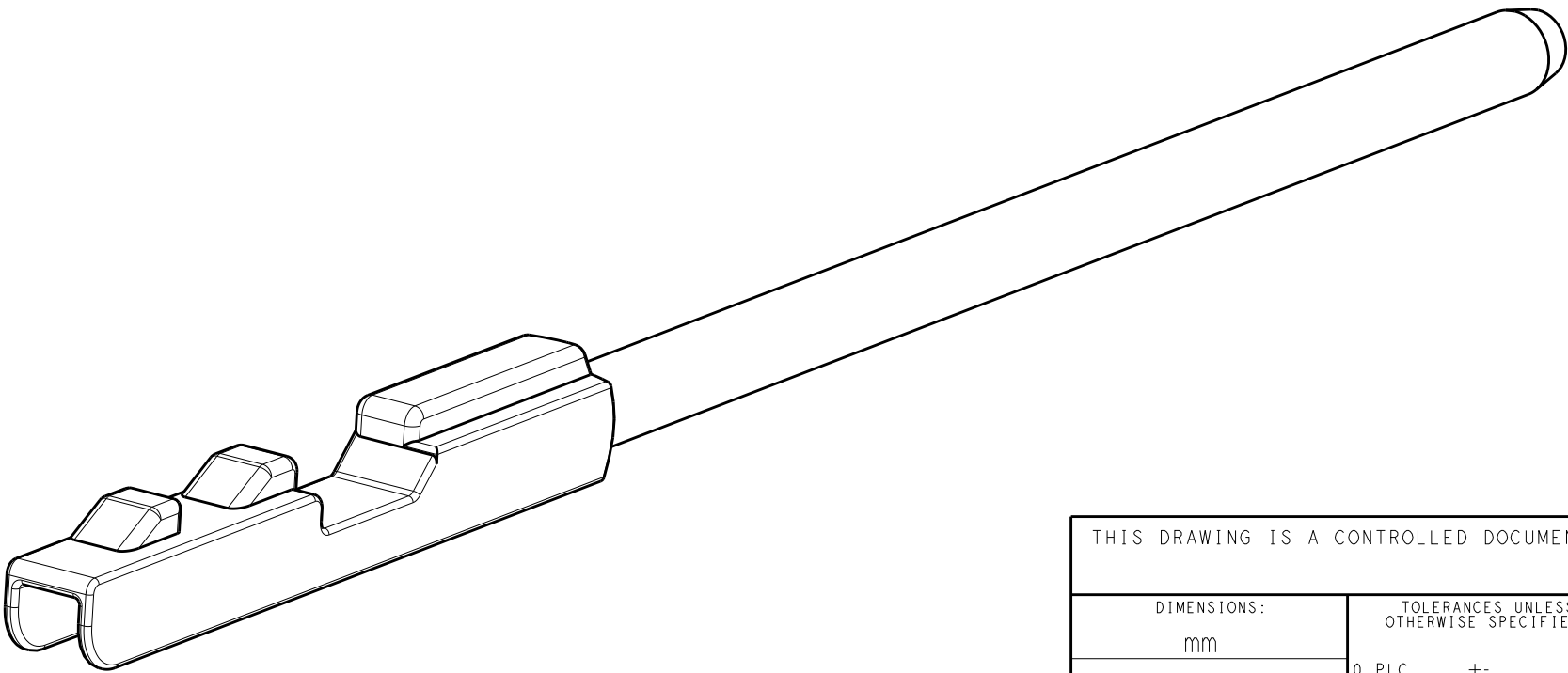
B

A

A



- 1 MATERIAL: NYLON 6/6, 15% GLASS FILLED, LIGHT GRAY
2. PACKING: LOOSE PIECES IN PLASTIC BAGS IN CARDBOARD
- 3 CAVITY ID LOCATED APPROXIMATELY AS SHOWN.



2304518-1  
TE#

THIS DRAWING IS A CONTROLLED DOCUMENT.		DWN R. HETRICK 23JAN2017	TE Connectivity			
DIMENSIONS:		CHK R. HETRICK 23JAN2017				
mm		APVD R. HETRICK 23JAN2017	NAME MCON CB CAVITY SEAL PLUG POSITIVE LOCK			
		PRODUCT SPEC	-			
		APPLICATION SPEC	-			
MATERIAL		WEIGHT	SIZE A2	CAGE CODE -	DRAWING NO. C-2304518	RESTRICTED TO -
SEE NOTE 1		CUSTOMER DRAWING	SCALE 8:1	SHEET 1	OF 1	REV B