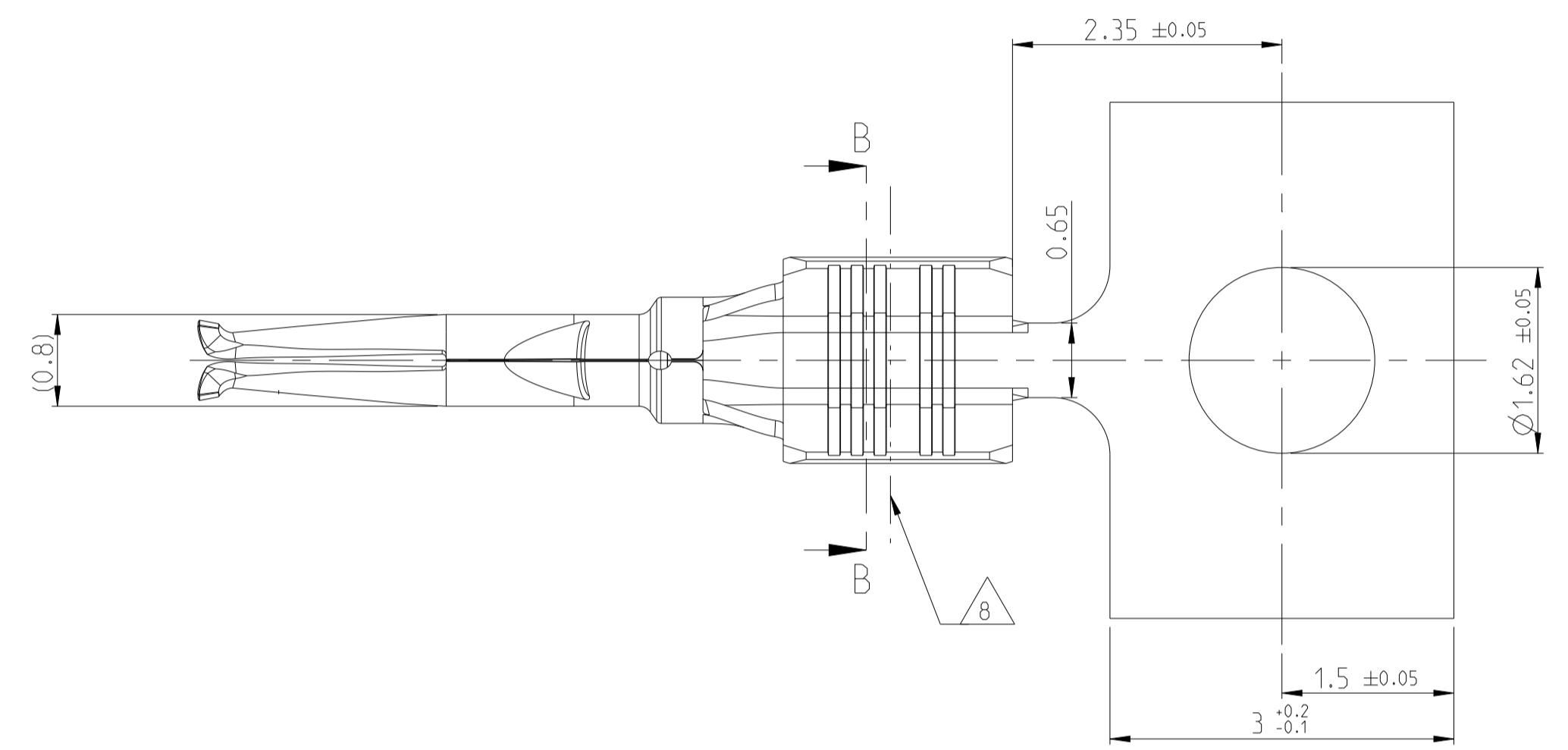
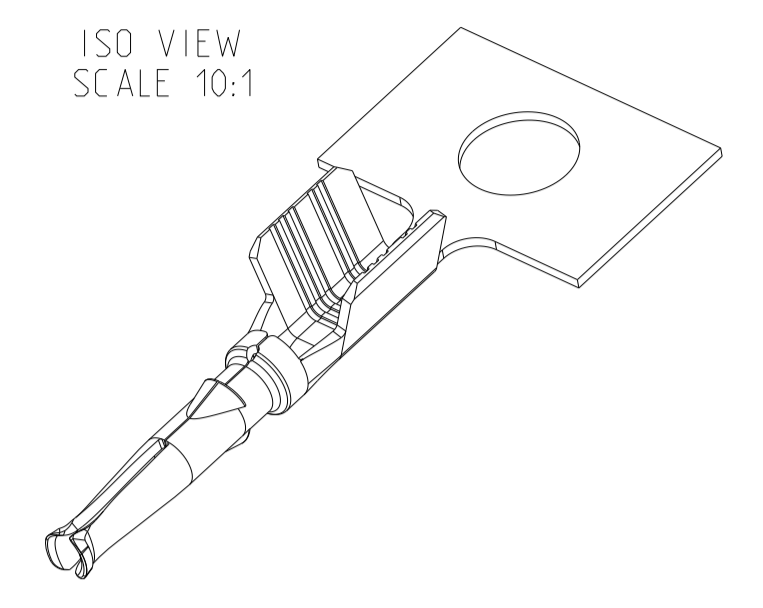
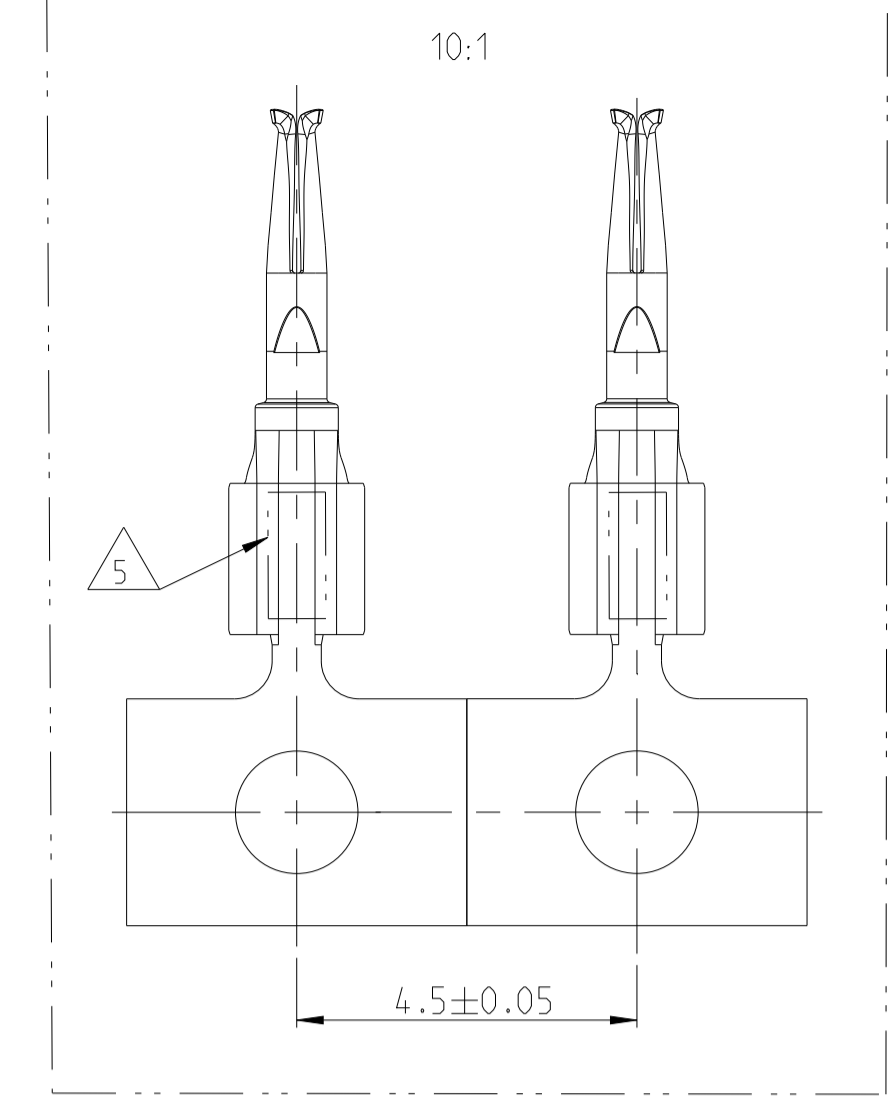
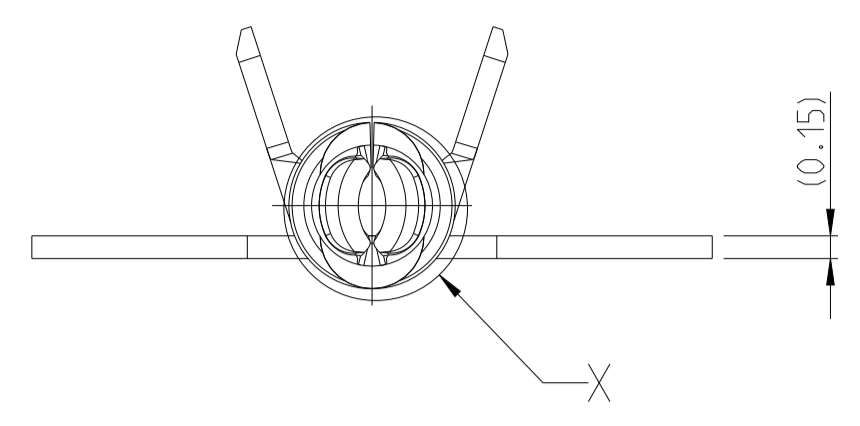
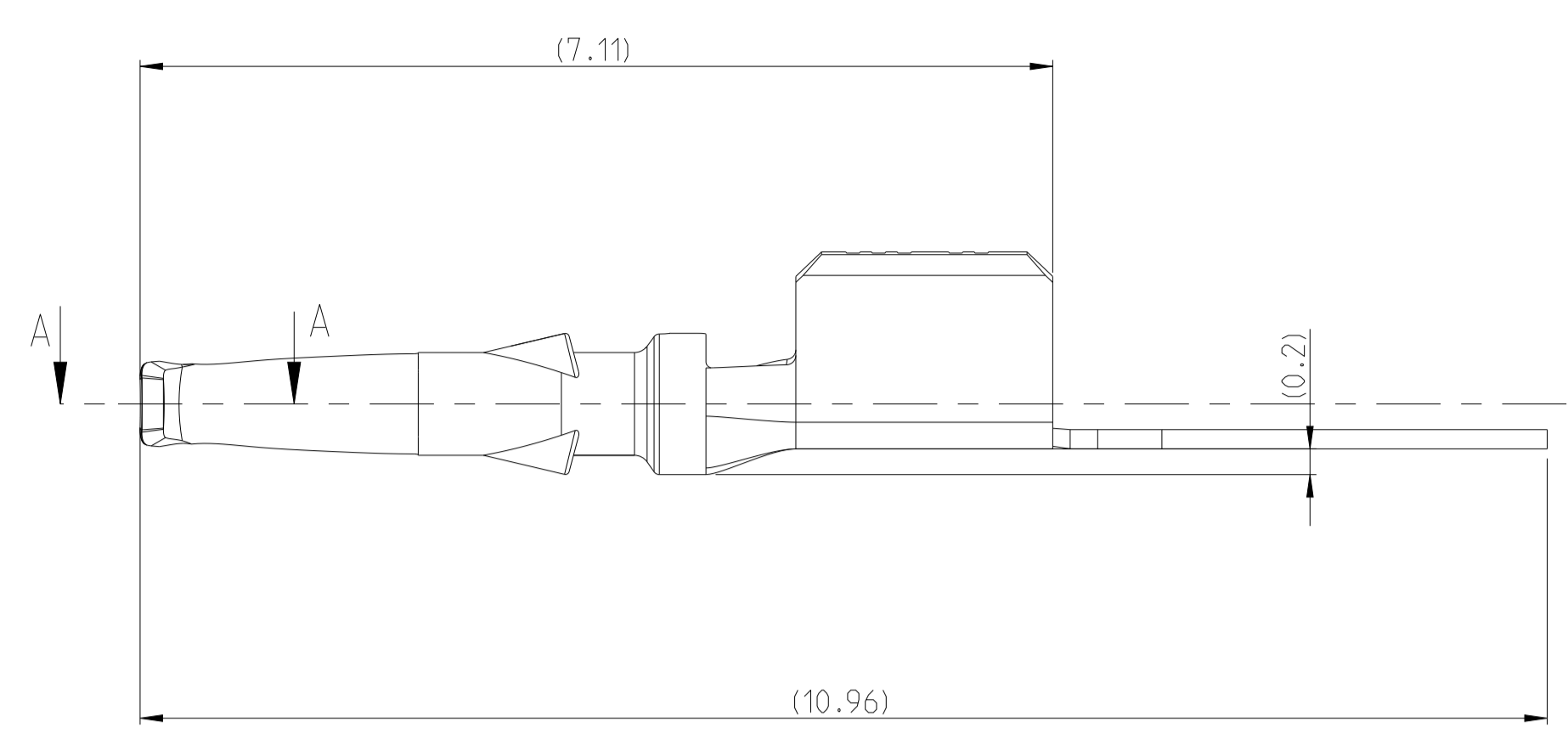
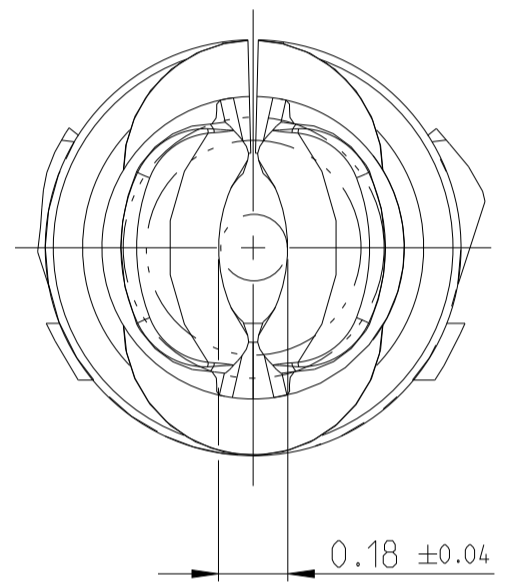


REVISIONS					
REV	LTN	DESCRIPTION	DATE	OWN	APVD
B3		See PCN E-20-017532	30NOV2020	NR	CS
B4		GAP SIZE TOL ADDED	21SEP2021	SA	CS

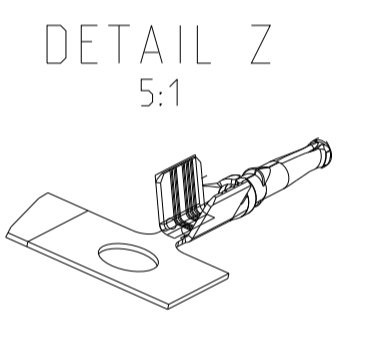
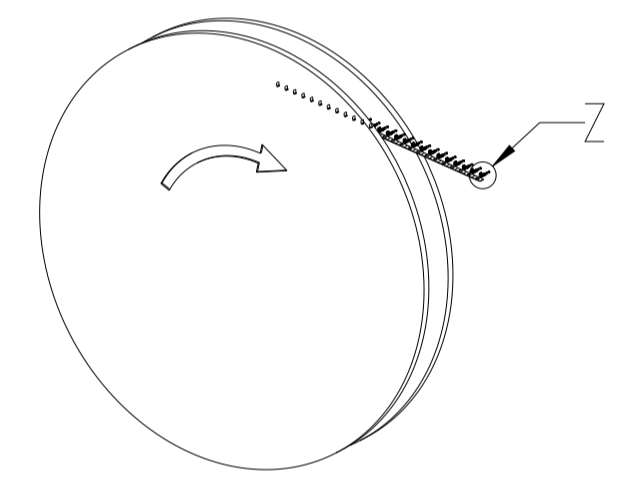


DETAIL X
50:1



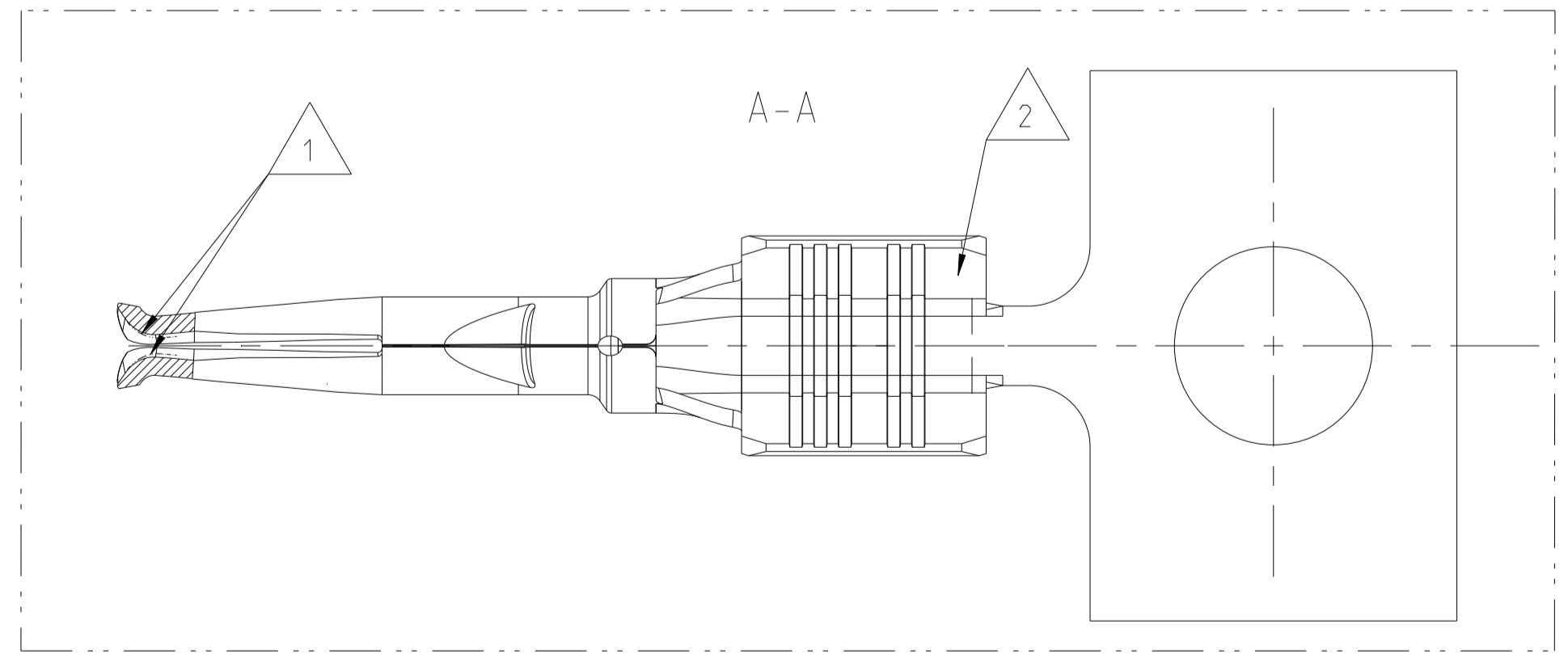
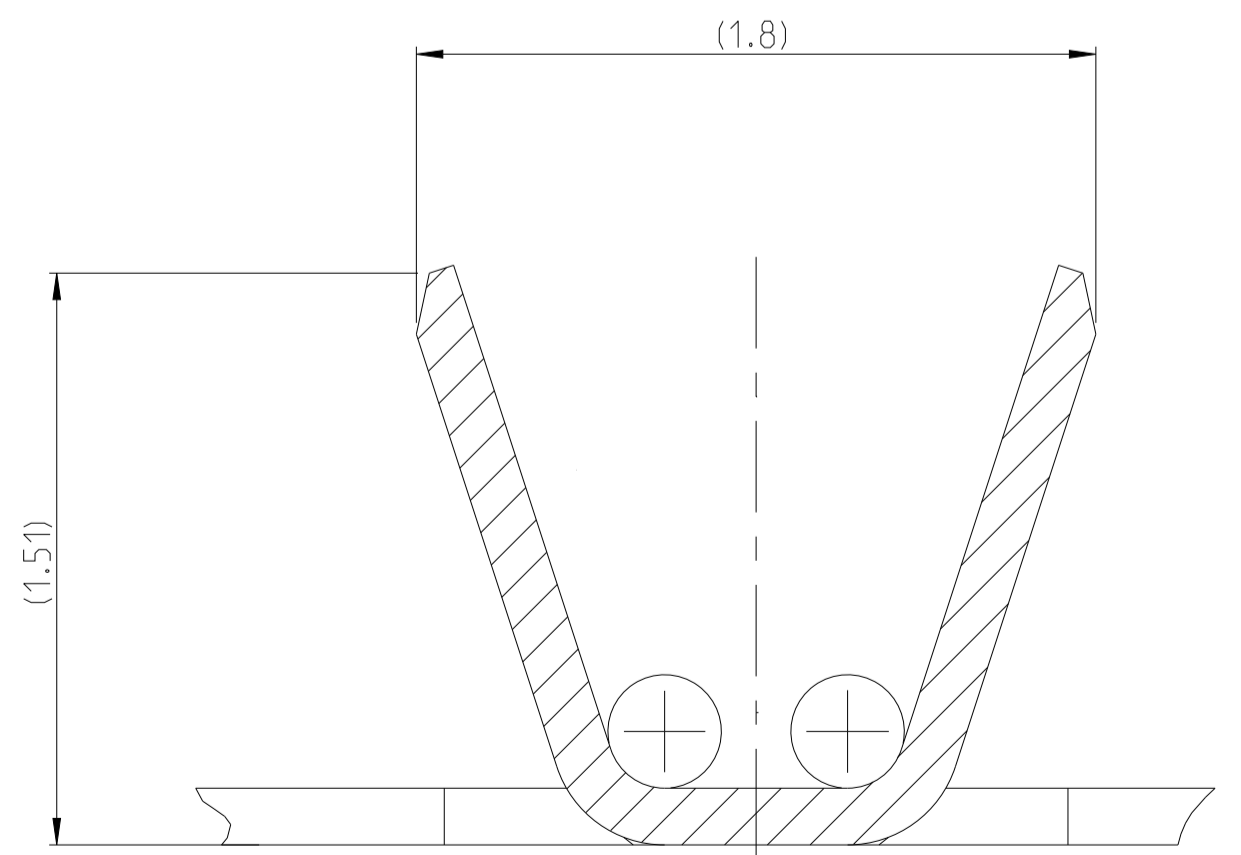
NOTES
Bemerkungen

- 1 SILVER IN CONTACT AREA
Silber in Kontaktbereich
- 2 TIN IN CRIMP AREA
Sn im Crimpbereich
- 3 PACKAGING: PRODUCT REELED ON CORRUGATED REEL WITH INTERLEAVING PAPER
SIX REELS PER CORRUGATED SHIPPING BOX. QUANTITY: 30000 PCS./REEL.
Verpackung: Spulenware auf Wellpappespule mit Zwischenlagenpapier
Sechs Spulen pro Versandkarton. Stueckzahl: 30000 Teile/Spule
- 4 CONDITION AS DELIVERY
Auslieferungszustand



- 5 REVISION MARKING AND MANUFACTURING LOCATION CODE
Revision Stempel und Produktionsstandort
- 6 LISTED WEIGHT INCLUDE THE CARRIER STRIP
Gewicht inklusive Traegerstreifen
- 7 APPLICATOR PN SEE IN APPLICATION SPEC. 114-94413
PN des Applicators siehe in Verarbeitungsspec. 114-94413
- 8 MICROSECTION FOR CRIMPINSPECTION HAVE TO BE DONE ON SHOWN POSITION
Schliffbild zur Crimpüberwachung ist bei angezeigter Position durchzuführen

SECTION B-B
50:1



RTK031	0.35mm ²	1/2	CuSn	B	2298121-1
CABLE TYPE	WIRE RANGE	FINISH	MATERIAL	REV	PART NO

THIS DRAWING IS A CONTROLLED DOCUMENT.

DIMENSIONS:	TOLERANCES UNLESS OTHERWISE SPECIFIED:	OWN: O. De Cloet 29SEP2016	CHK: C. Schrettinger 29SEP2016	APVD: O. De Cloet 29SEP2016	NAME: MATE-AX, SOCKET CENTER CONTACT, 180 DEGREES, RTK031
mm	0 PLC ±0.2 1 PLC ±0.2 2 PLC ±0.2 3 PLC ±0.2 4 PLC ±0.2 ANGLES ±° FINISH ±μm	PRODUCT SPEC: 108-94515	APPLICATION SPEC: 7	SIZE: A1	RESTRICTED TO: B4
MATERIAL: see table		WEIGHT: 0.038 g	CAGE CODE: -	DRAWING NO: C=2298121	SCALE: 20:1

CUSTOMER DRAWING