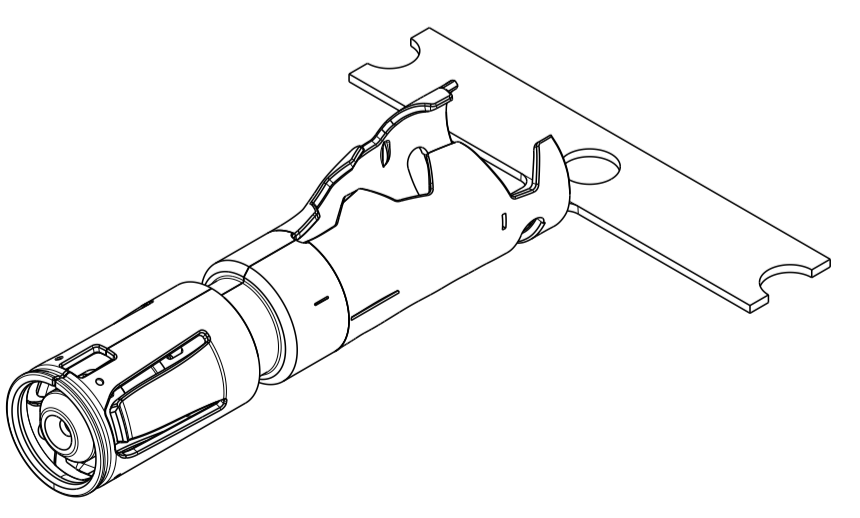
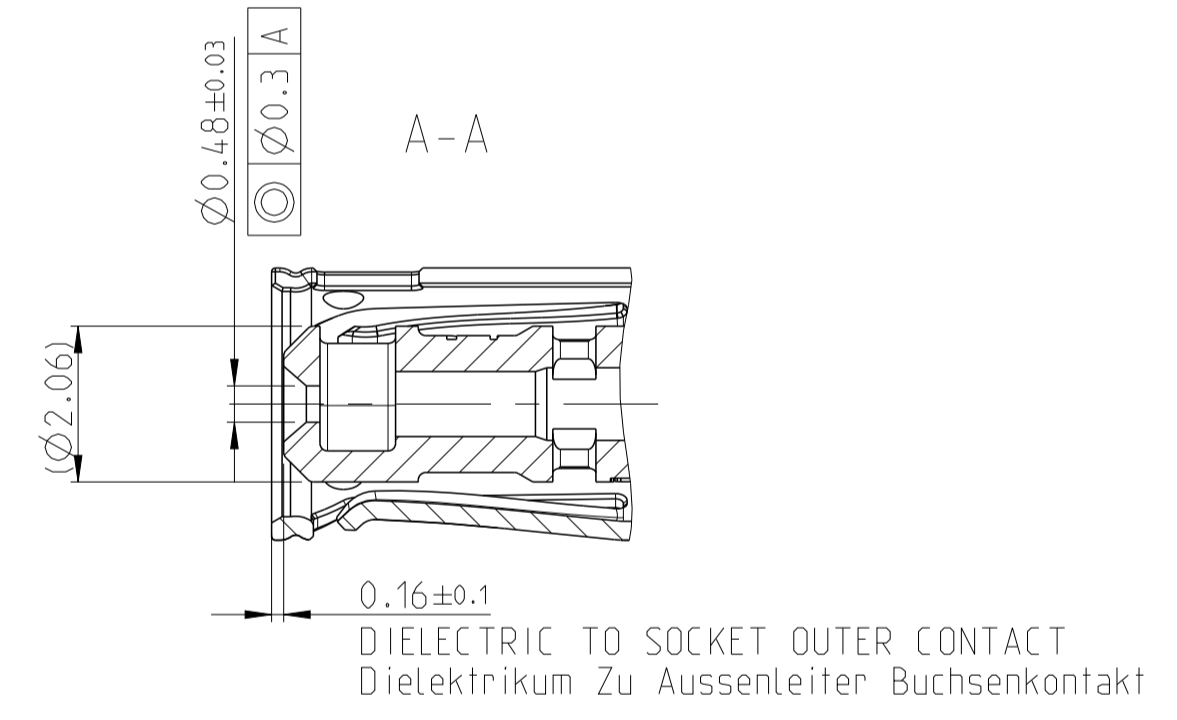
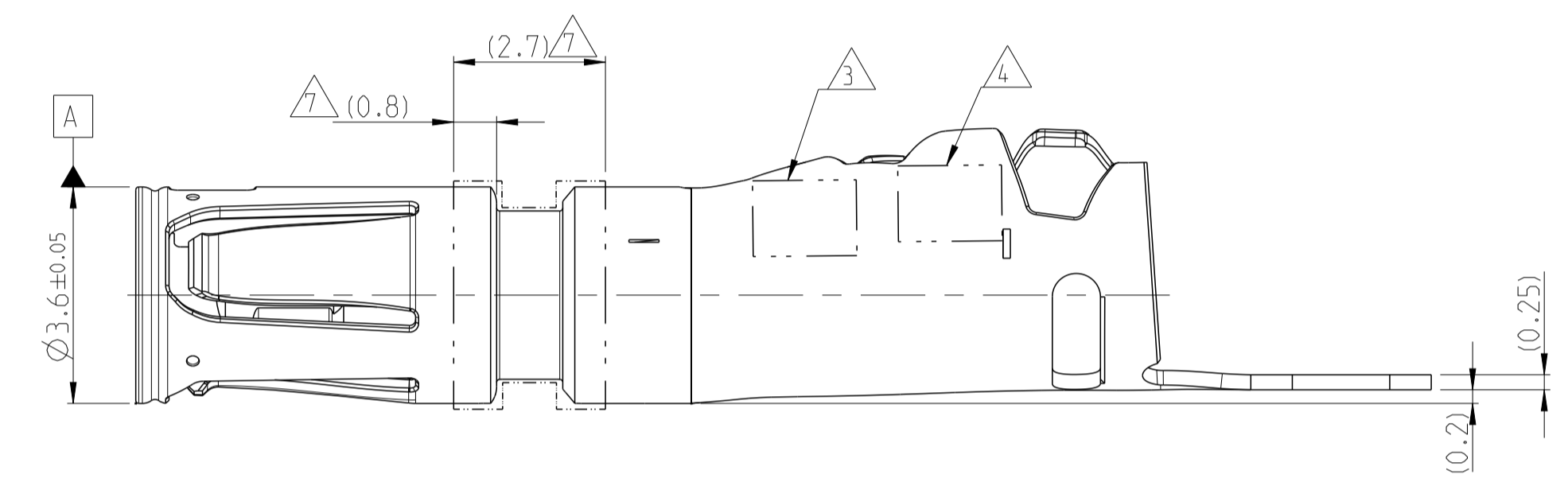
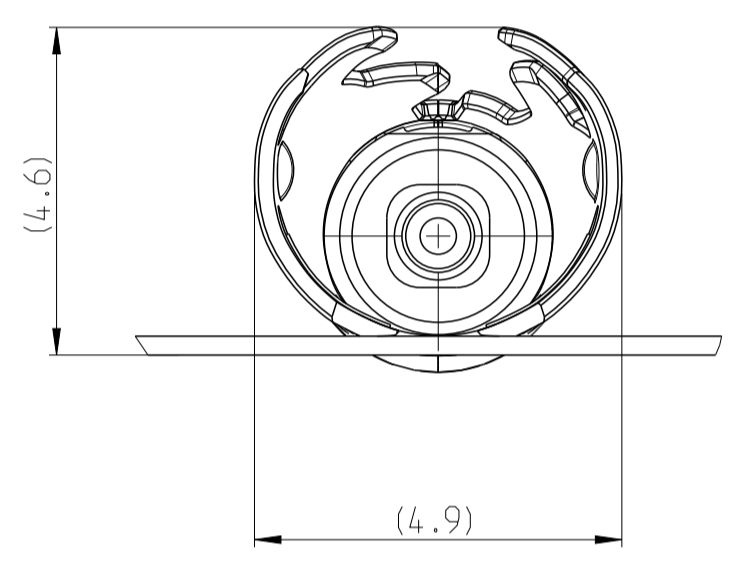
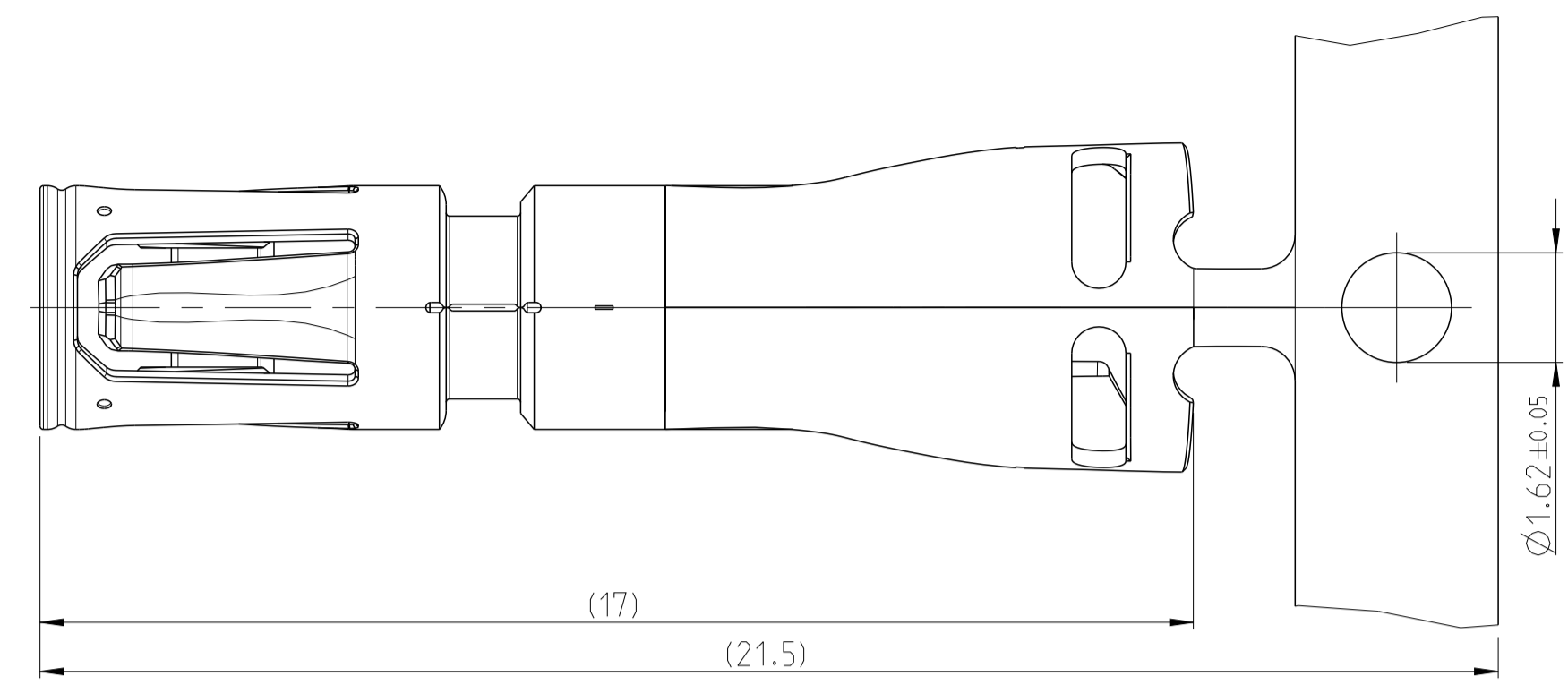
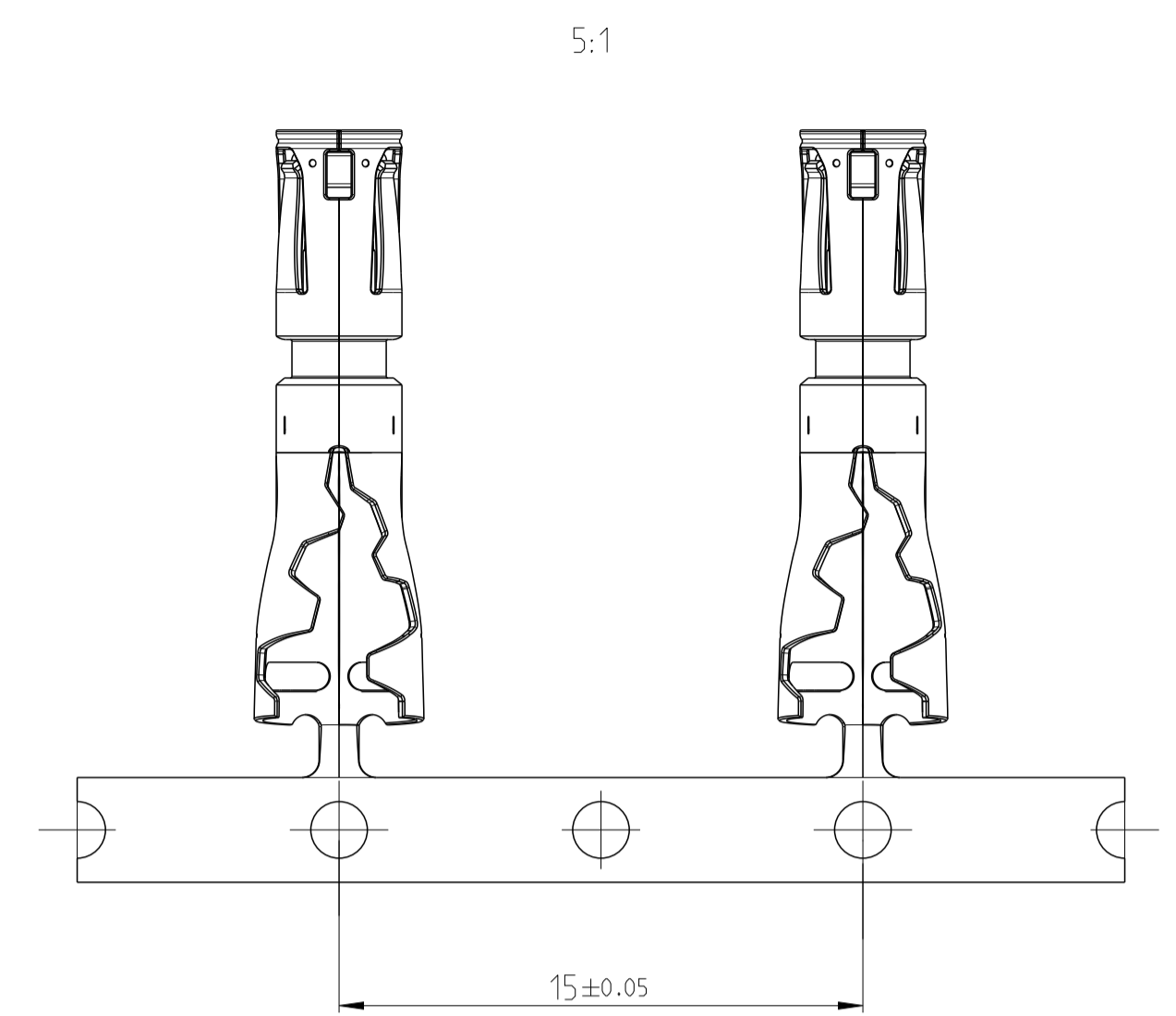
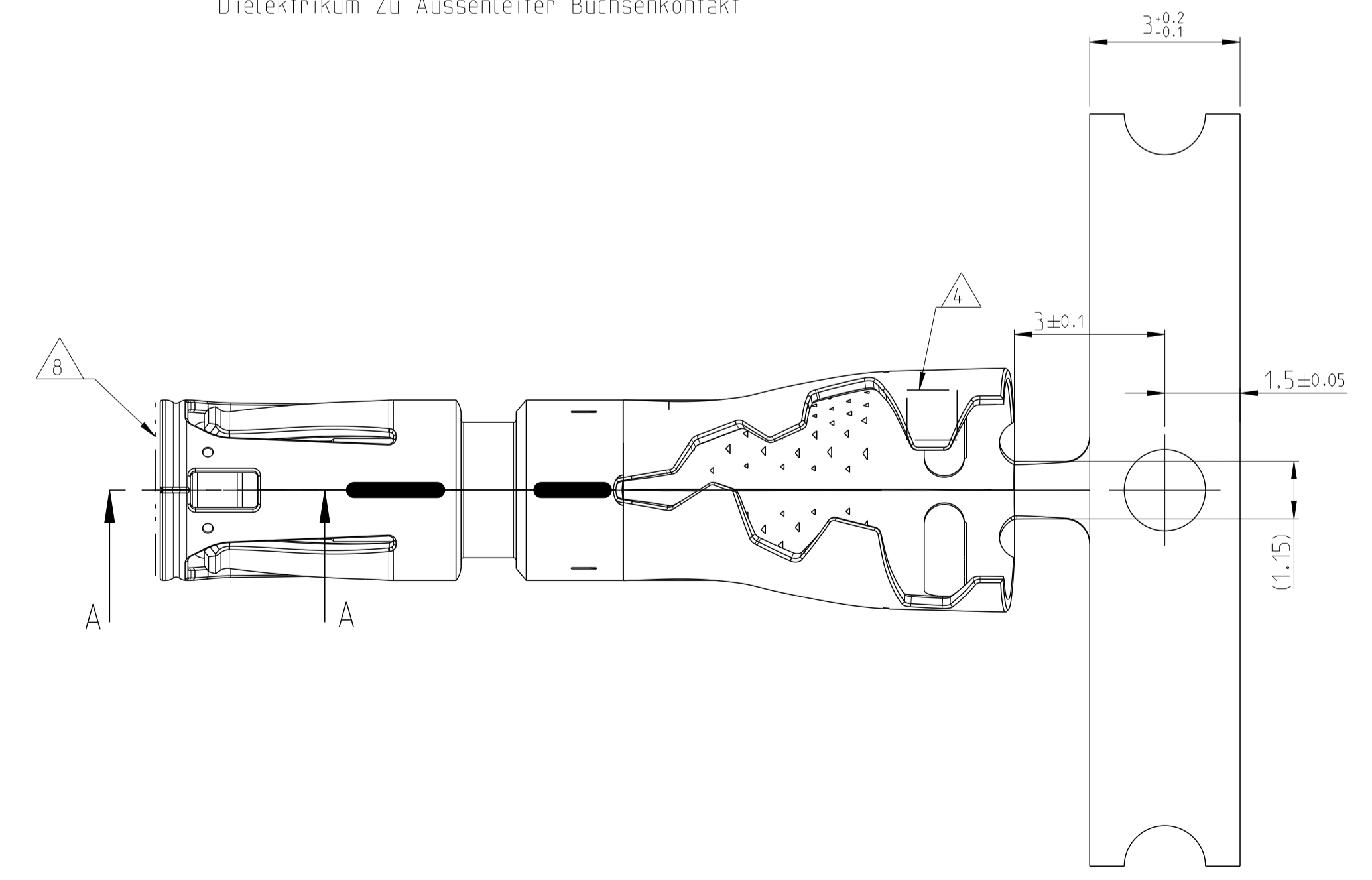


REVISIONS					
P	LTN	DESCRIPTION	DATE	DWN	APVD
C4		see PCN E-20-017532	30NOV2020	NR	CS



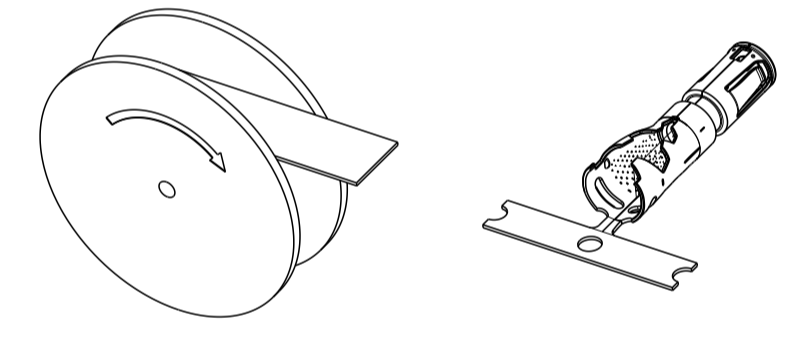
5:1



5:1

NOTES
Bemerkungen

- 1 PACKAGING: PRODUCT REELED ON CORRUGATED REEL WITH INTERLEAVING PAPER
Verpackung: Spulenware auf Wellpappspule mit Zwischenlagenpapier
- 2 CONDITION AS DELIVERY
Auslieferungszustand



- 3 MANUFACTURING LOCATION AND TE CONNECTIVITY LOGO
Produktionsstandort und TE Connectivity Logo
- 4 REVISION STATE AND DATE CODE
Revisionsstatus und Datumcode
- 5 LISTED WEIGHT INCLUDE THE CARRIER STRIP AND THE DIELECTRIC
Gewicht inklusive Trägerstreifen und Dielektrikum
- 6 APPLICATOR PN SEE IN APPLICATION SPEC. 114-94413
PN des Applicators siehe in Verarbeitungsspez. 114-94413
- 7 ALLOWED AREA FOR CONTACT GRIPPING
FOR CABLE TERMINATION
Zulaessiger Bereich zum Greifen des Kontaktes bei der Kabelverarbeitung
- 8 DURING THE PROCESSING, THE CONTACT MAY BE LOADED WITH MAX. 30N IN AXIAL DIRECTION
Bei der Verarbeitung darf der Kontakt an gezeigter Stelle axial mit max. 30N belastet werden

SUB-ASSEMBLY SOCKET CONTACT	Socket Outer Contact	CuSn	Sn	C	2298116-1
	Dielectric	PBT	green RAL 6018 similar		
DESCRIPTION		MATERIAL	FINISH	REV	PART No.

THIS DRAWING IS A CONTROLLED DOCUMENT.		DWN O. De Cloet 29SEP2016	 TE Connectivity
DIMENSIONS:		CHK O. De Cloet 29SEP2016	
mm	TOLERANCES UNLESS OTHERWISE SPECIFIED:	APVD K. Schrettlinger 29SEP2016	NAME SUBASSEMBLY, SOCKET CONTACT MATE-AX, 180 DEGREE, RTK031
0 PLC	±0.2	PRODUCT SPEC	
1 PLC	±0.2	108-94515	
2 PLC	±0.2	APPLICATION SPEC	
3 PLC	±		
4 PLC	±		
ANGLES	±1°		
MATERIAL		WEIGHT 5 0.47 g	SIZE A1
		CUSTOMER DRAWING	CAGE CODE --
			DRAWING NO. C=2298116
			RESTRICTED TO
			SCALE 10:1
			SHEET 1 OF 1
			REV C4