

THIS DRAWING IS UNPUBLISHED.

RELEASED FOR PUBLICATION

© COPYRIGHT

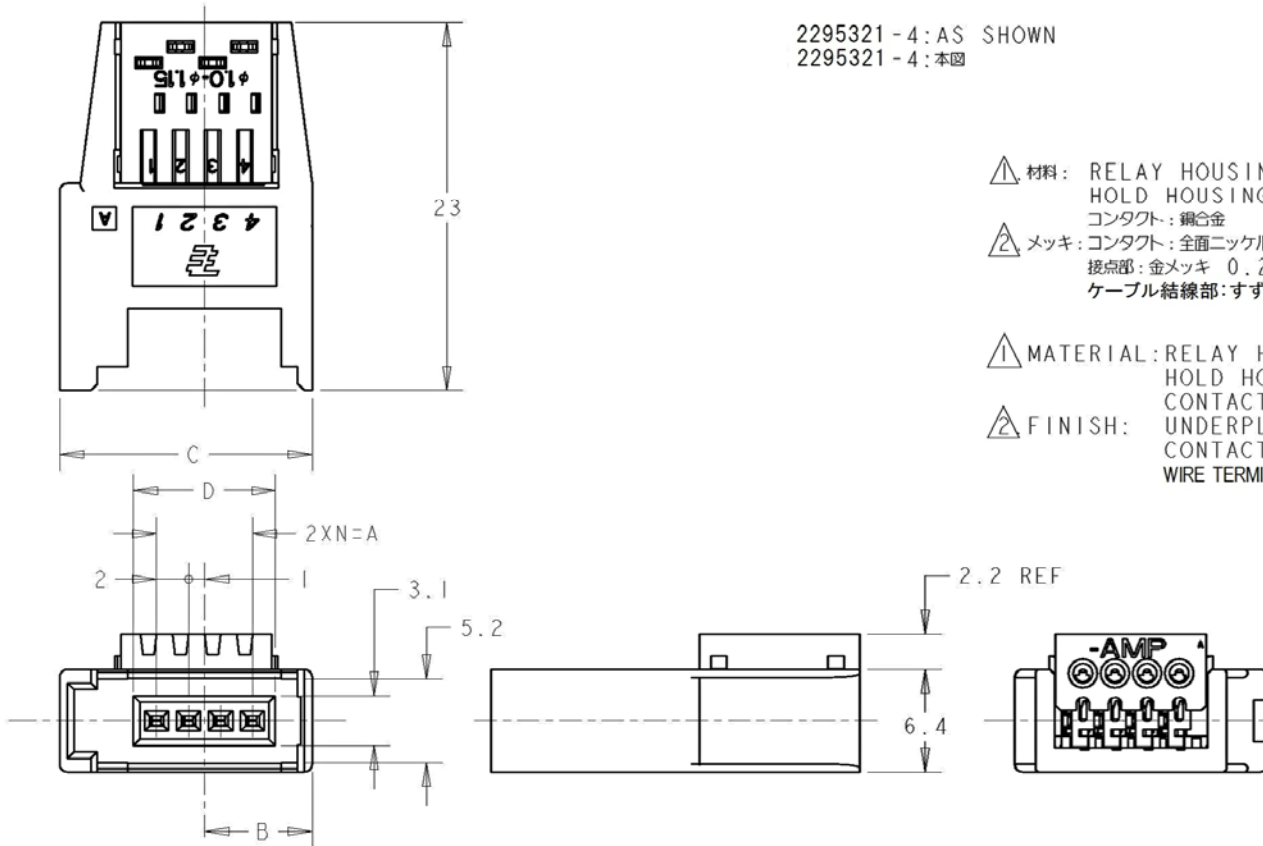
ALL RIGHTS RESERVED.

LOC	DIST	REVISIONS				DATE	DWN	APVD
J	-	P	LTR	DESCRIPTION				
		A		RELEASED		9DEC2015	K.K	E.T

2295321-4: AS SHOWN  
 2295321-4: 本圖

- △ 材料: RELAY HOUSING: ガラス入り熱可塑性ポリエステル樹脂、94V-0、黒  
 HOLD HOUSING: ポリカーボネイト 94V-0 黄色: 0-, 赤色: 1-, 青色: 2-  
 コンタクト: 銅合金
- △ メッキ: コンタクト: 全面ニッケルメッキ下地 1.27μm MIN  
 接点部: 金メッキ 0.2μm MIN  
 ケーブル結線部: すずメッキ 2μm MIN

- △ MATERIAL: RELAY HOUSING: GLASS FILED THERMOPLASTIC, 94V-0, BLACK.  
 HOLD HOUSING: PC, 94V-0, YELLOW: 0-, RED: 1-, BLUE: 2-.  
 CONTACT: COPPER ALLOY.
- △ FINISH: UNDERPLATE: Ni 1.27μm min.  
 CONTACT AREA: Au 0.2μm min.  
 WIRE TERMINATION AREA: Sn 2μm min.



< Table of Insulation Dia (Cable suitable for e-CON.) >  
 < 被覆外径一覧表 (e-CON 対応電線) >

INSULATION DIA	INSULATION DIA	P/N	SHEET No
RED	φ0.90~1.00	1- 2295321-□	SEE SHEET 1
YELLOW	φ1.00~1.15	2295321-□	SEE SHEET 1
BLUE	φ1.15~1.35	2- 2295321-□	SEE SHEET 1
GREEN	φ1.35~1.60	4- 2295321-□	SEE SHEET 2
HOLD HSG COLOR	INSULATION DIA	P/N	SHEET No

BLUE	16.9	23.8	10.75	14	7	8	2- 2295321-8
RED	16.9	23.8	10.75	14	7	8	1- 2295321-8
YELLOW	16.9	23.8	10.75	14	7	8	2295321-8
BLUE	12.9	19.8	8.75	10	5	6	2- 2295321-6
RED	12.9	19.8	8.75	10	5	6	1- 2295321-6
YELLOW	12.9	19.8	8.75	10	5	6	2295321-6
BLUE	8.9	15.8	6.75	6	3	4	2- 2295321-4
RED	8.9	15.8	6.75	6	3	4	1- 2295321-4
YELLOW	8.9	15.8	6.75	6	3	4	2295321-4
BLUE	6.9	13.8	5.75	4	2	3	2- 2295321-3
RED	6.9	13.8	5.75	4	2	3	1- 2295321-3
YELLOW	6.9	13.8	5.75	4	2	3	2295321-3
HOLD HSG COLOR	D	C	B	A	N	POS	P/N

WIRE RANGE 絶縁電線径範囲	SEE 108-5765	INSULATION DIA 被覆外径	SEE TABLE
-----------------------	--------------	------------------------	-----------



SOCKET ASSY  
 E-CON RITS CONN.  
 WIRE TERMINATION Sn TYPE

DIMENSIONS: 単位: 英 mm	TOLERANCES UNLESS OTHERWISE SPECIFIED: 一般公差 ±0.2 0-PLC ± 1-PLC ± 2-PLC ± 3-PLC ± 4-PLC ± ANGLES ±3°	DWN K. KUWAHATA 9DEC2015	CHK E. TAKEMASA 9DEC2015	APVD E. TAKEMASA 9DEC2015	NAME 名称
MATERIAL 材料	SEE NOTE	FINISH 仕上	SEE NOTE	PRODUCT SPEC 製品規格 108-5765	APPLICATION SPEC 取付適用規格
SEE NOTE		SEE NOTE		SIZE 寸法	RESTRICTED TO
SEE NOTE		SEE NOTE		CAGE CODE 箱号	00779
SEE NOTE		SEE NOTE		DRAWING NO 図号	C= 2295321
SEE NOTE		SEE NOTE		WEIGHT	-
SEE NOTE		SEE NOTE		CUSTOMER DRAWING	SCALE 尺度
SEE NOTE		SEE NOTE		3:1	
SEE NOTE		SEE NOTE		SHEET 1 OF 2	
SEE NOTE		SEE NOTE		REV A	

取扱説明書 (Instruction Sheet): 411-78014

THIS DRAWING IS UNPUBLISHED.

RELEASED FOR PUBLICATION

© COPYRIGHT

ALL RIGHTS RESERVED.

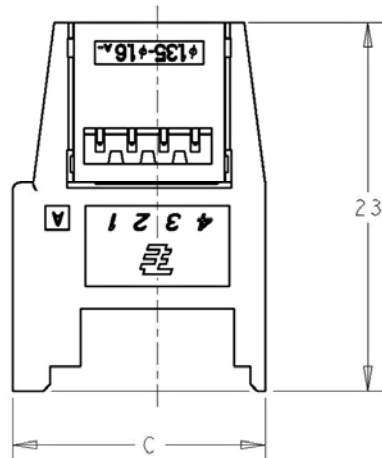
LOC J

DIST -

REVISIONS

P	LTR	DESCRIPTION	DATE	DWN	APVD
-	-	SEE SHEET 1	-	-	-

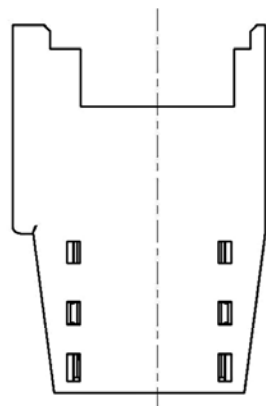
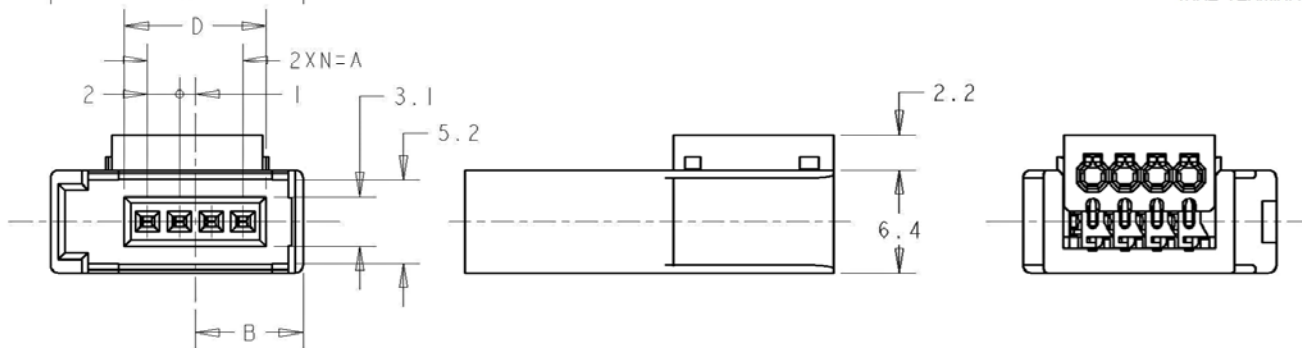
4- 2295321 -4: AS SHOWN  
4- 2295321 -4: 本図




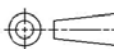
△ 材料: RELAY HOUSING: ガラス入り熱可塑性ポリエステル樹脂. 94V-0、黒  
HOLD HOUSING: ポリカーボネイト 94V-0 緑色: 4-  
コンタクト: 銅合金  
△ 2 メッキ: コンタクト: 全面ニッケルメッキ下地 1.27μm MIN  
接点部: 金メッキ 0.2μm MIN  
ケーブル結線部: すずメッキ 2μm MIN

△ MATERIAL: RELAY HOUSING: GLASS FILED THERMOPLASTIC, 94V-0, BLACK.  
HOLD HOUSING: PC, 94V-0, GREEN: 4-  
CONTACT: COPPER ALLOY.

△ FINISH: UNDERPLATE: Ni 1.27μm min.  
CONTACT AREA: Au 0.2μm min.  
WIRE TERMINATION AREA: Sn 2μm min.



GREEN	16.9	23.8	10.75	14	7	8	4- 2295321 -8
	12.9	19.8	8.75	10	5	6	4- 2295321 -6
	8.9	15.8	6.75	6	3	4	4- 2295321 -4
	6.9	13.8	5.75	4	2	3	4- 2295321 -3
HOLD HSG COLOR	D	C	B	A	N	POS	P/N

DIMENSIONS: mm		TOLERANCES UNLESS OTHERWISE SPECIFIED:		DWN -		 TE Connectivity	
		0 PLC ±- 1 PLC ±- 2 PLC ±- 3 PLC ±- 4 PLC ±- ANGLES ±-		CHK -			
MATERIAL SEE NOTE		FINISH SEE NOTE		APVD -		SIZE CAGE CODE DRAWING NO RESTRICTED TO	
△		△		PRODUCT SPEC -		A3 00779 C= 2295321 -	
CUSTOMER DRAWING				APPLICATION SPEC -		SCALE 3:1 SHEET 2 OF 2 REV A	
				WEIGHT -			