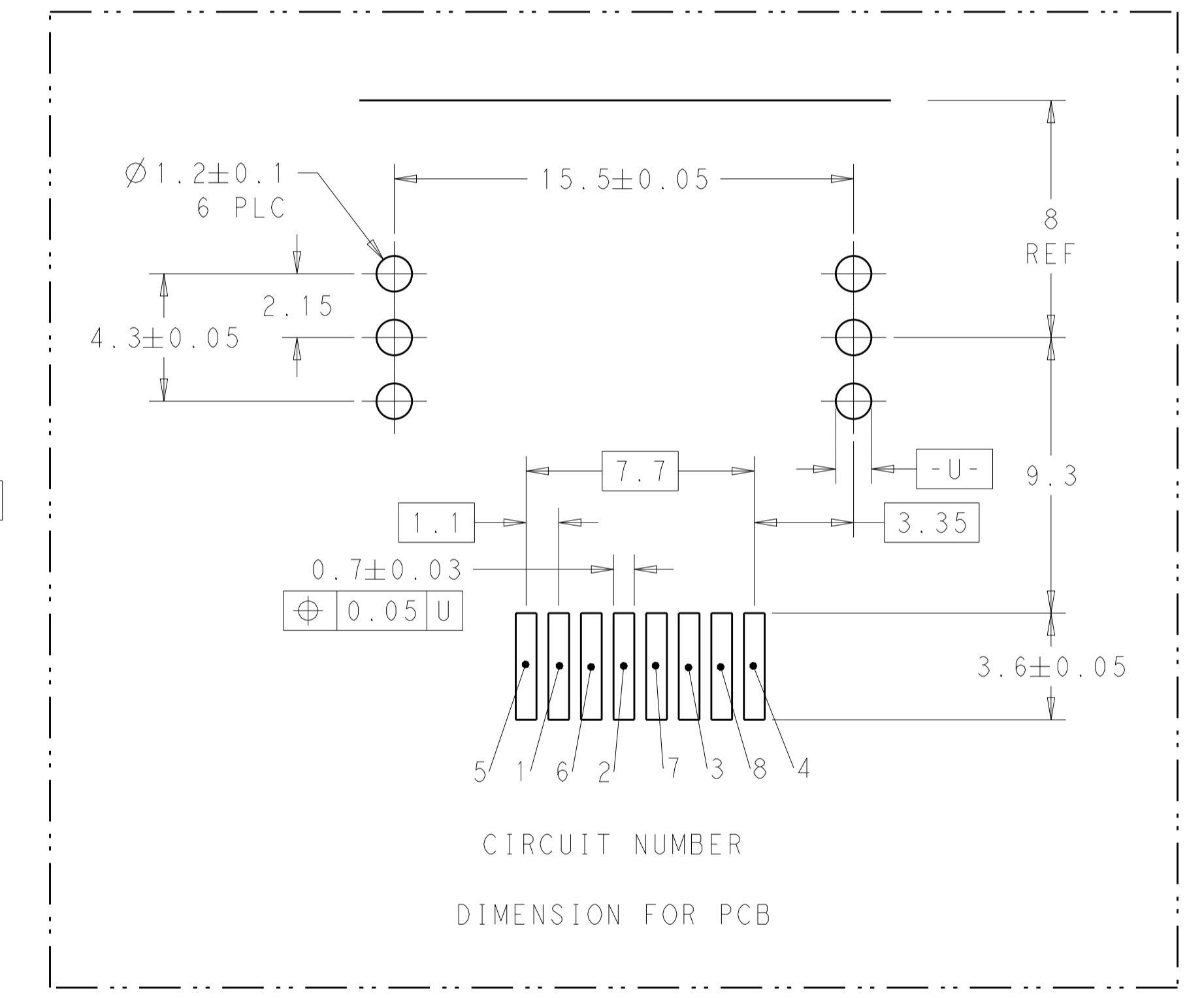
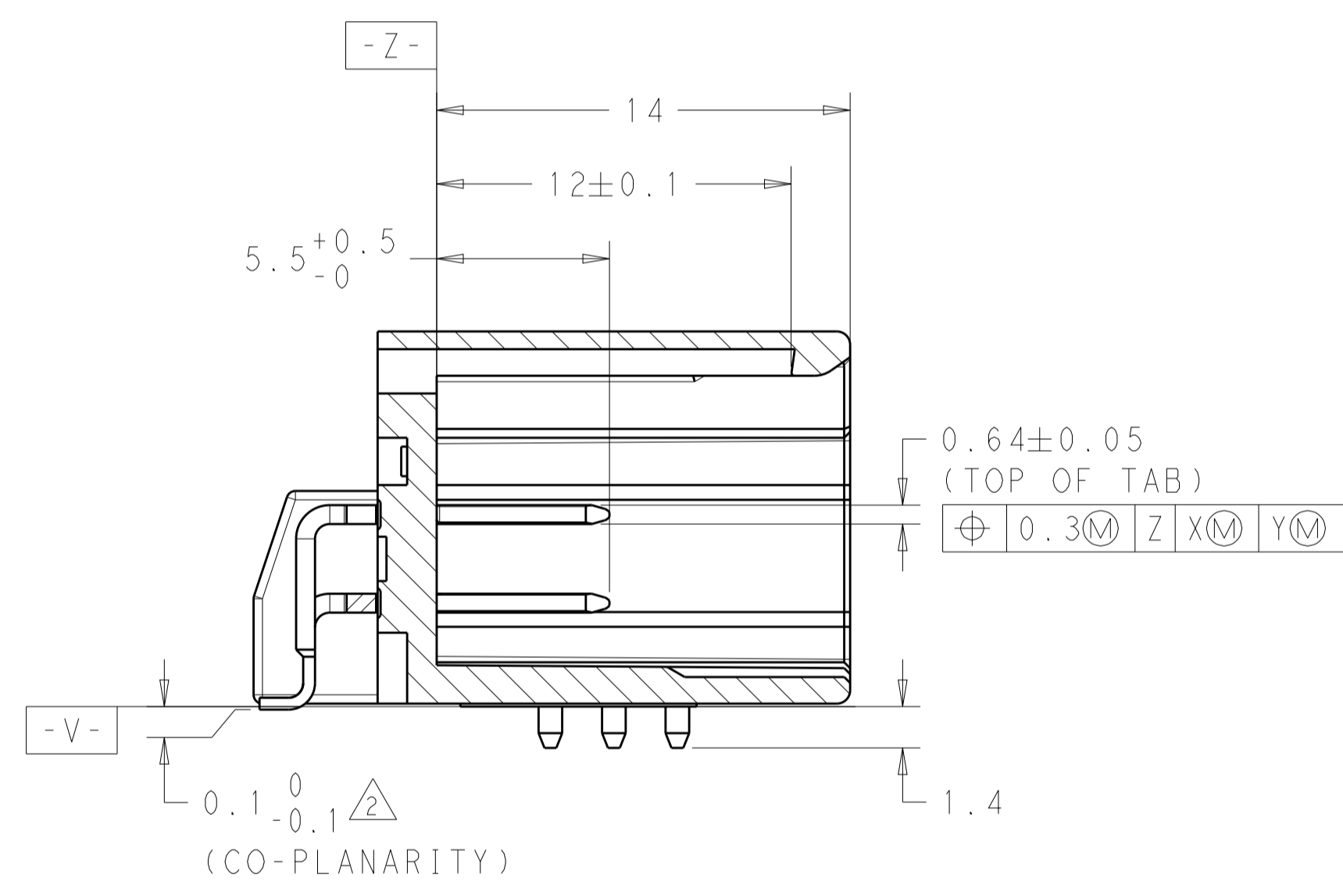
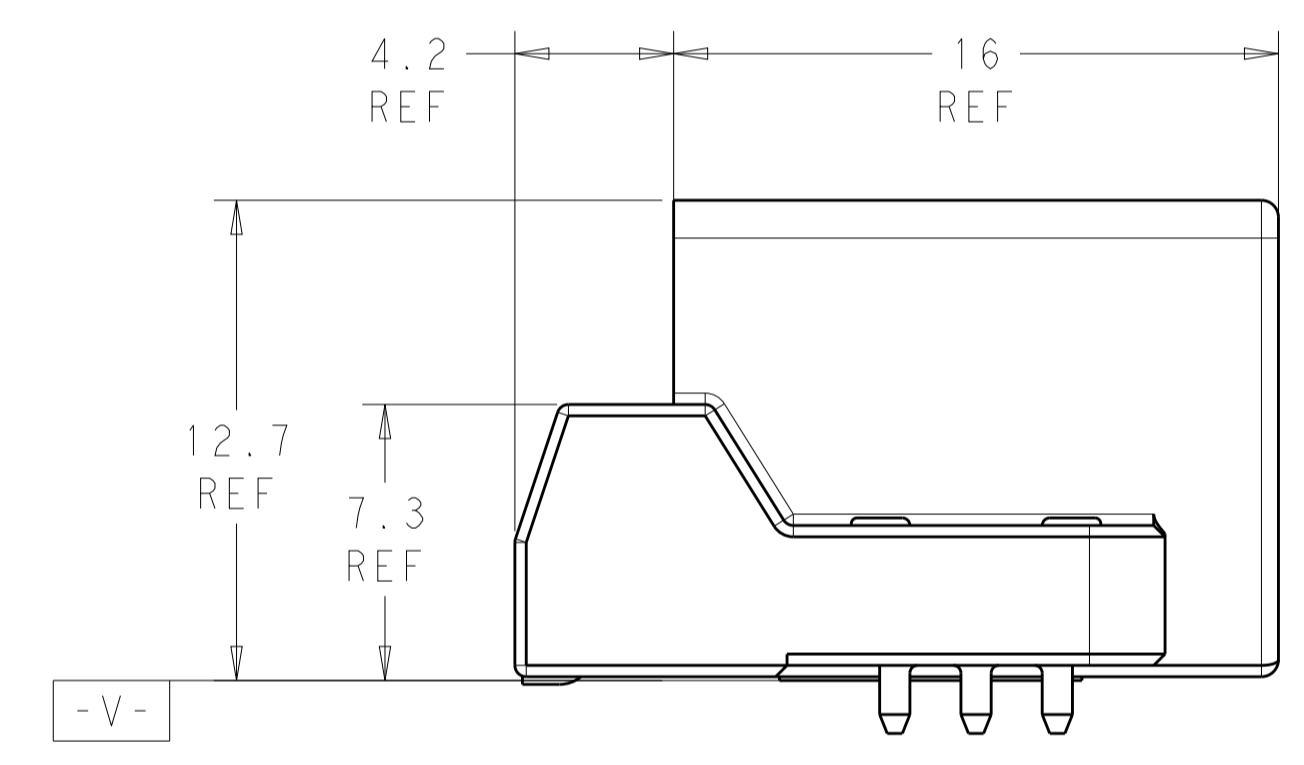
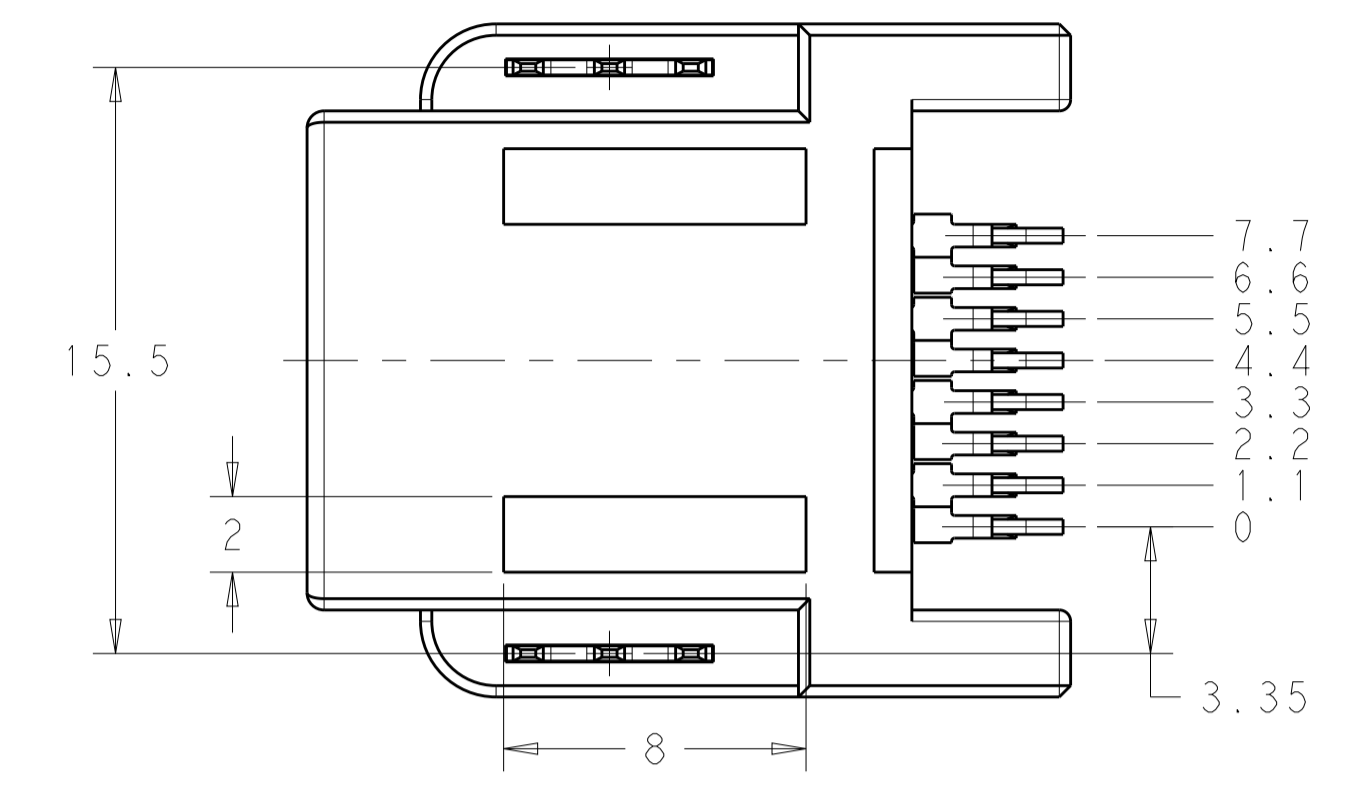
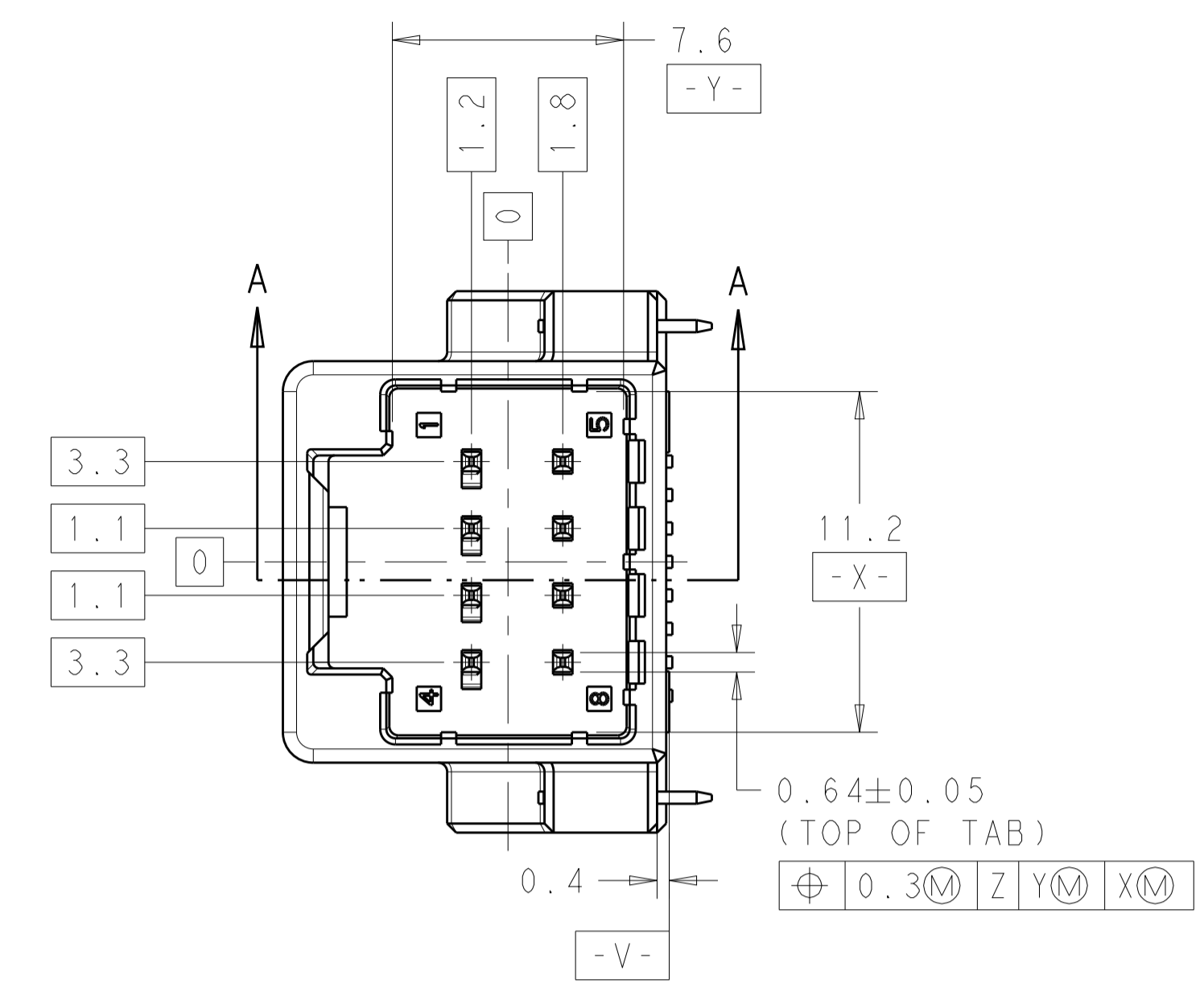
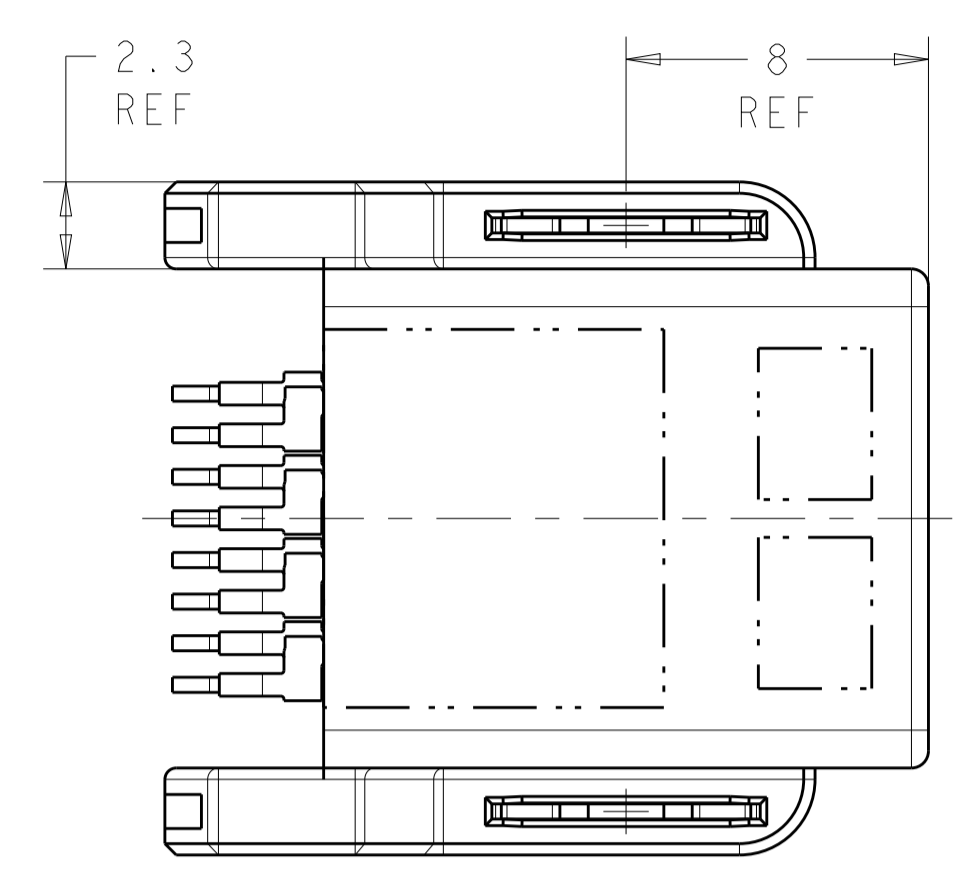
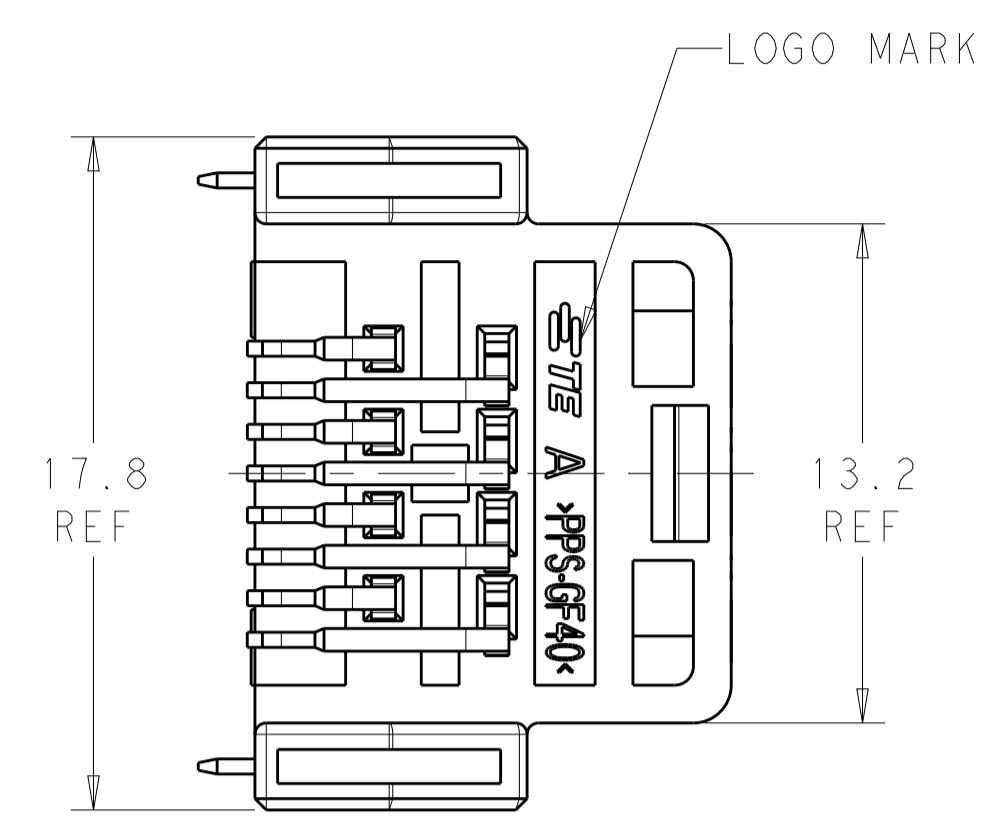
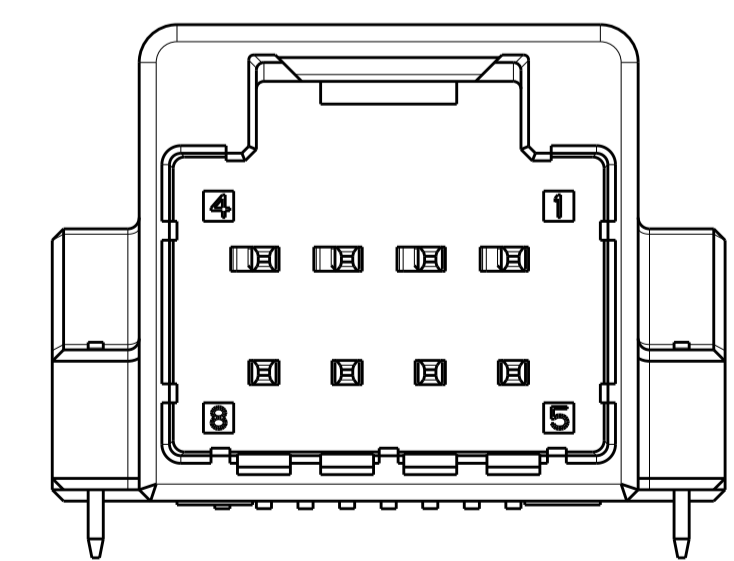


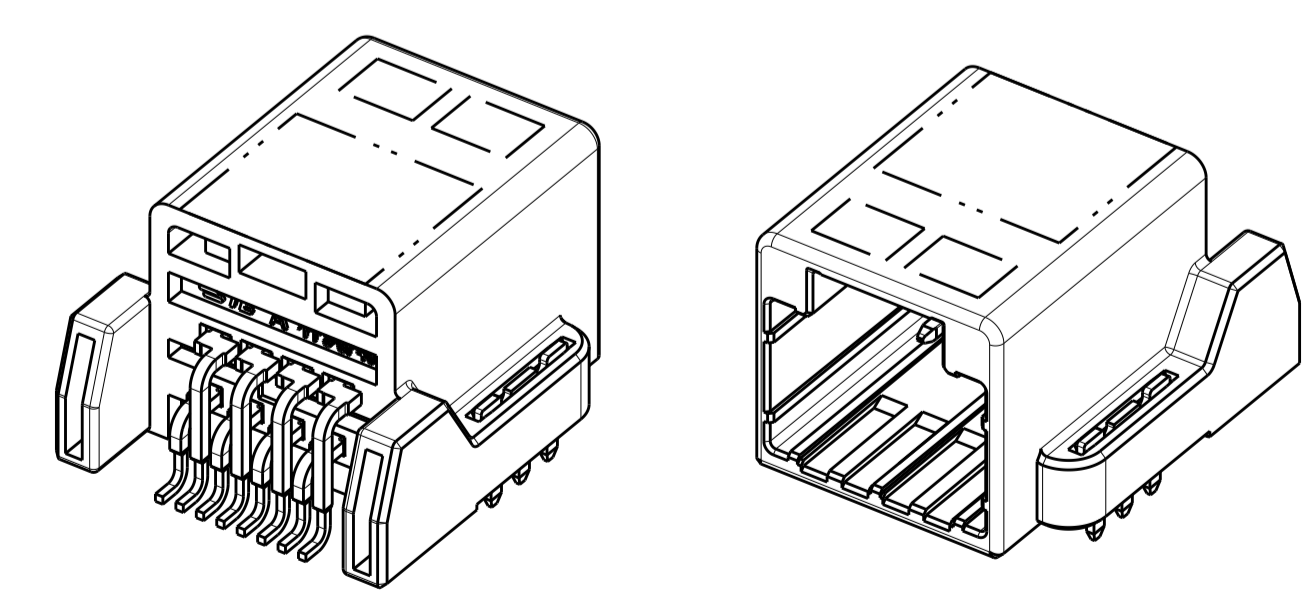
REVISIONS				
P	LTM	DESCRIPTION	DATE	APVD
A		NPR ECO-16-009835	29JUN2016	JC JL
A1		REVISED ECR-16-012540	01SEP2016	JC LSF



NOTE:
 1. PACKAGING : 15" TAPE & REEL
 THIS DIMENSION IS MEASURED FROM LOWEST PIN TO HIGHEST PIN ALL PINS TO BE BELOW DATUM V



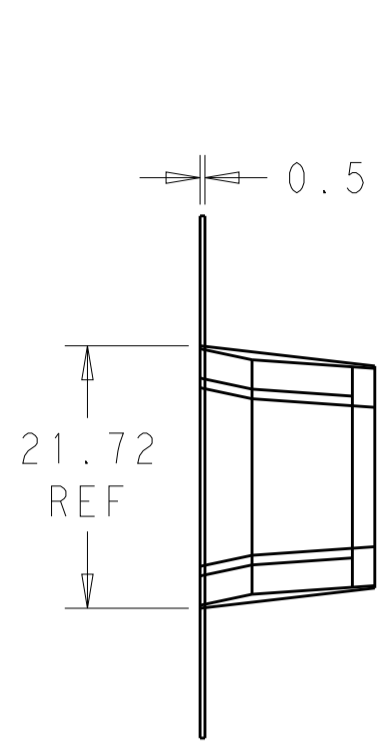
CIRCUIT NUMBER



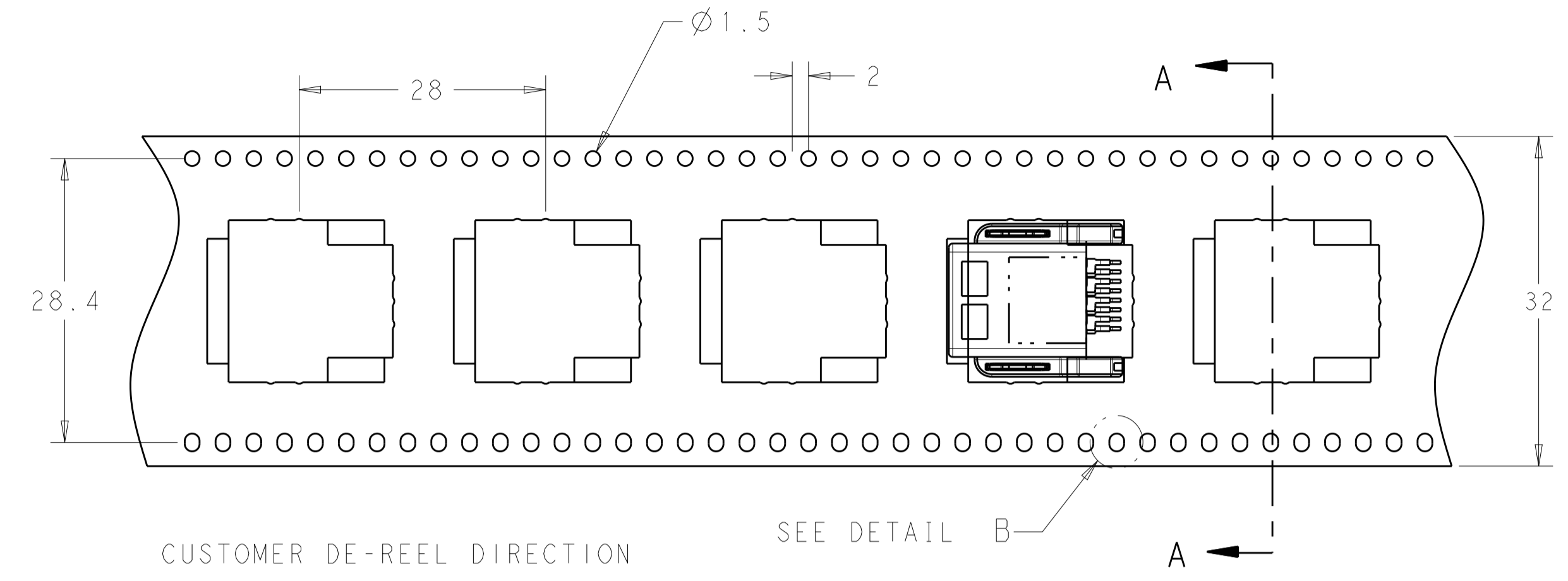
SCALE 3:1

BRASS	POST TIN OVER NI	BRASS	POST TIN OVER NI	PPS	BLACK	2291172-1	
MATERIAL	PLATING	MATERIAL	PLATING	MATERIAL	COLOR		
SOLDER PEG		CONTACT		HOUSING		PART NUMBER	
THIS DRAWING IS A CONTROLLED DOCUMENT.				DWN JASON CHOW 29JUN2016 CHK JIL LIM 29JUN2016 APVD SE LEONG 29JUN2016	STE TE Connectivity NAME 8 POSITION CAP ASSEMBLY		
DIMENSIONS: mm		TOLERANCES UNLESS OTHERWISE SPECIFIED:		PRODUCT SPEC		RESTRICTED TO	
0 PLC ±0.3 1 PLC ±0.3 2 PLC ±0.3 3 PLC ±0.3 4 PLC ±0.3 ANGLES ±0.3°		FINISH		APPLICATION SPEC		SIZE CAGE CODE DRAWING NO	
MATERIAL SEE TABLE		FINISH SEE TABLE		WEIGHT 2.8g		A100779C=2291172	
CUSTOMER DRAWING				SCALE 5:1		SHEET 1 OF 2 REV A1	

REVISIONS				
P.	LTN	DESCRIPTION	DATE	APVD
-	-	SEE SHEET 1	-	-

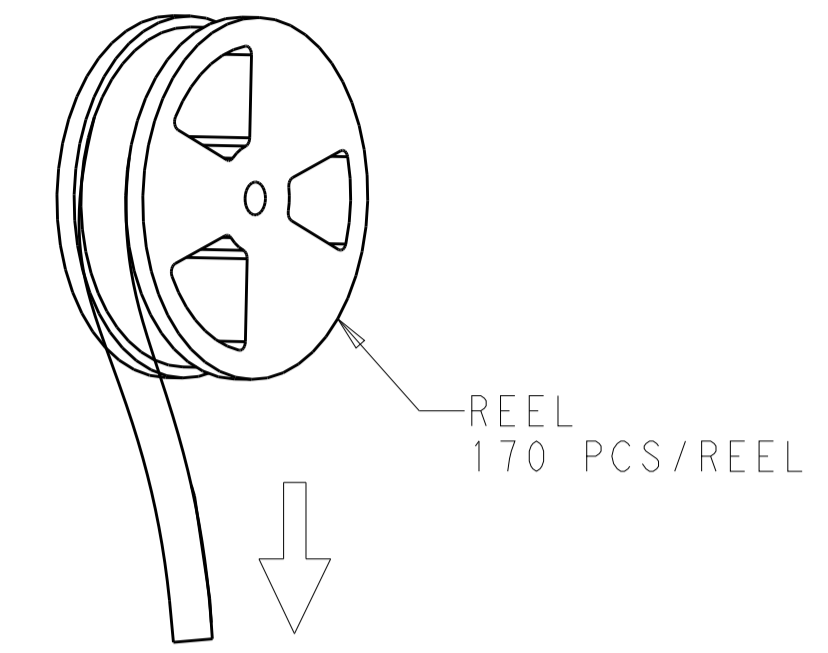
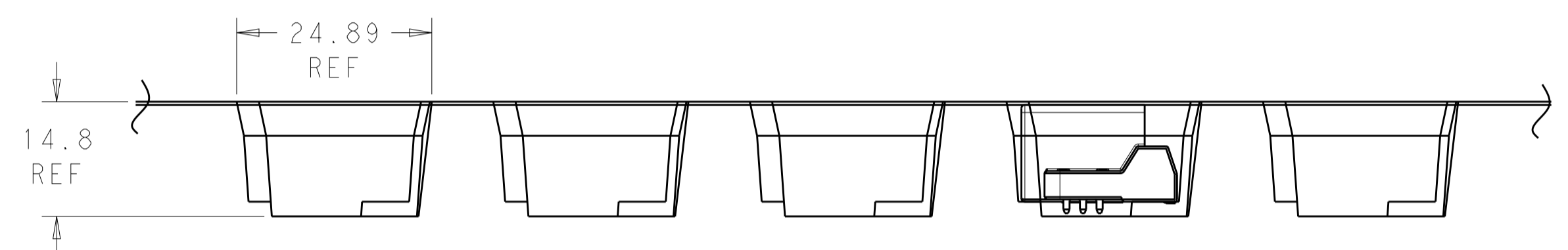


SECTION A-A

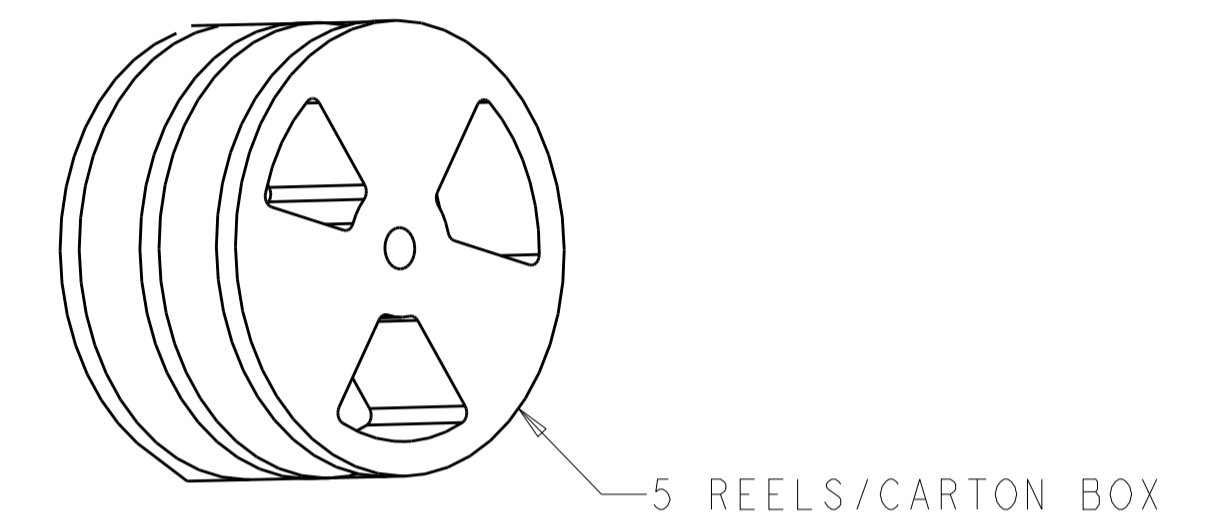


CUSTOMER DE-REEL DIRECTION →

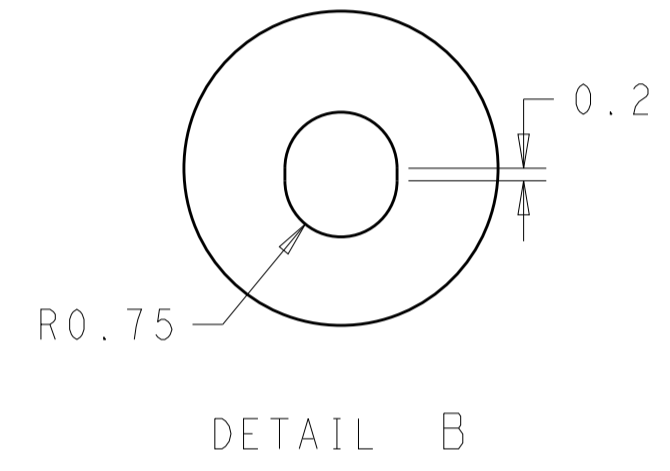
SEE DETAIL B



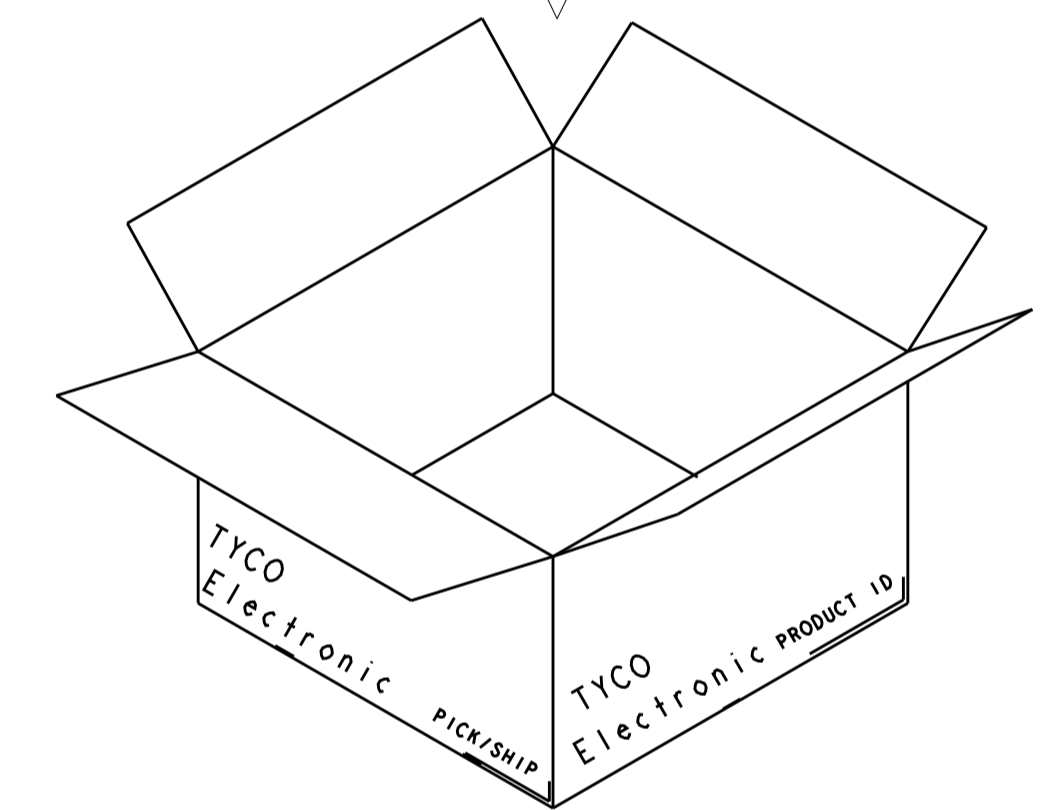
REEL
170 PCS/REEL



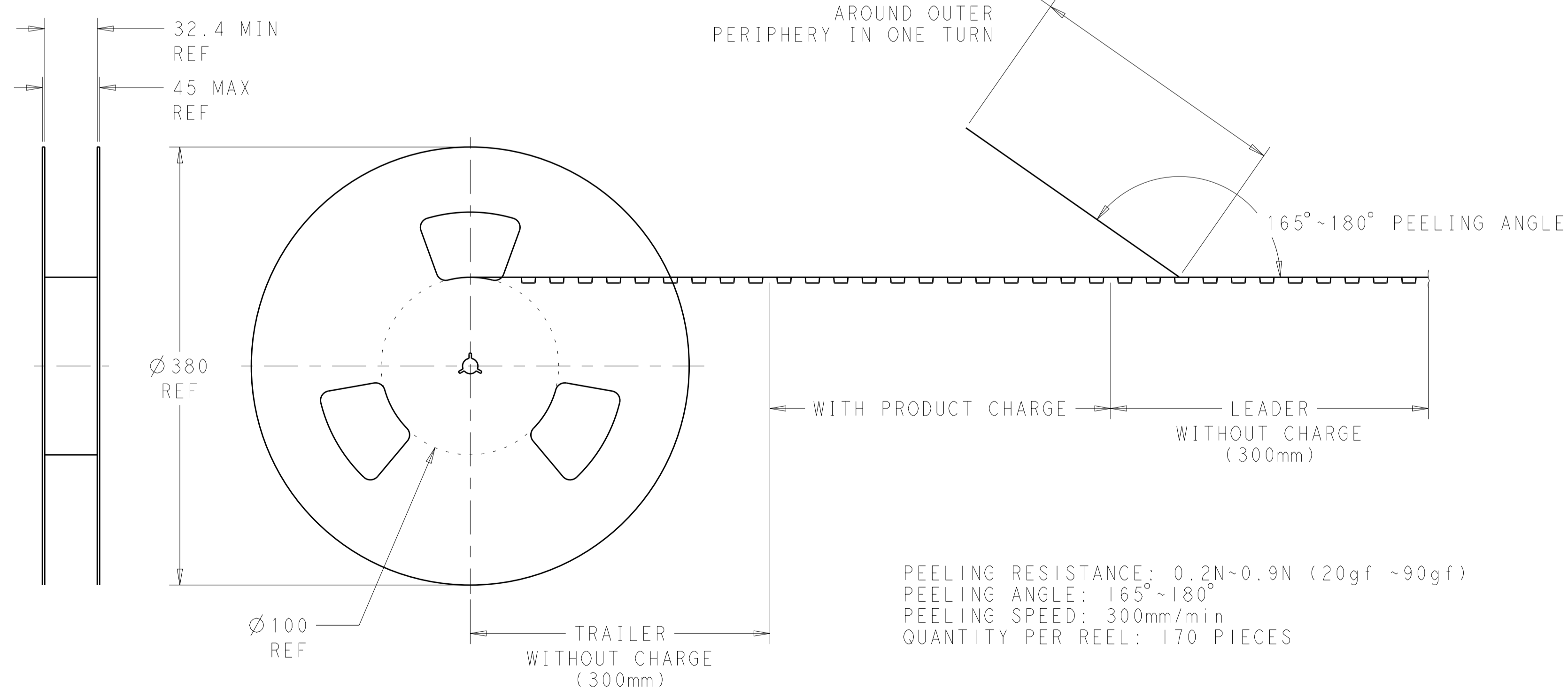
5 REELS/CARTON BOX



DETAIL B



CARTON BOX
850 PCS/BOX



PEELING RESISTANCE: 0.2N~0.9N (20gf ~90gf)
PEELING ANGLE: 165°~180°
PEELING SPEED: 300mm/min
QUANTITY PER REEL: 170 PIECES

THIS DRAWING IS A CONTROLLED DOCUMENT.		OWN: JASON CHOW 29JUN2016	TE Connectivity
DIMENSIONS: mm		CHK: JI LIM 29JUN2016	
TOLERANCES UNLESS OTHERWISE SPECIFIED:		APVD: SE LEONG 29JUN2016	NAME: 8 POSITION CAP ASSEMBLY
0 PLC	±0.3	PRODUCT SPEC	SIZE: CAGE CODE DRAWING NO
1 PLC	±0.3	APPLICATION SPEC	RESTRICTED TO
2 PLC	±0.3		A100779C=2291172
3 PLC	±0.3		SCALE NTS SHEET 2 OF 2 REV A1
4 PLC	±0.3		
ANGLES	±0.3		
MATERIAL	FINISH	WEIGHT	
CUSTOMER DRAWING		SCALE	