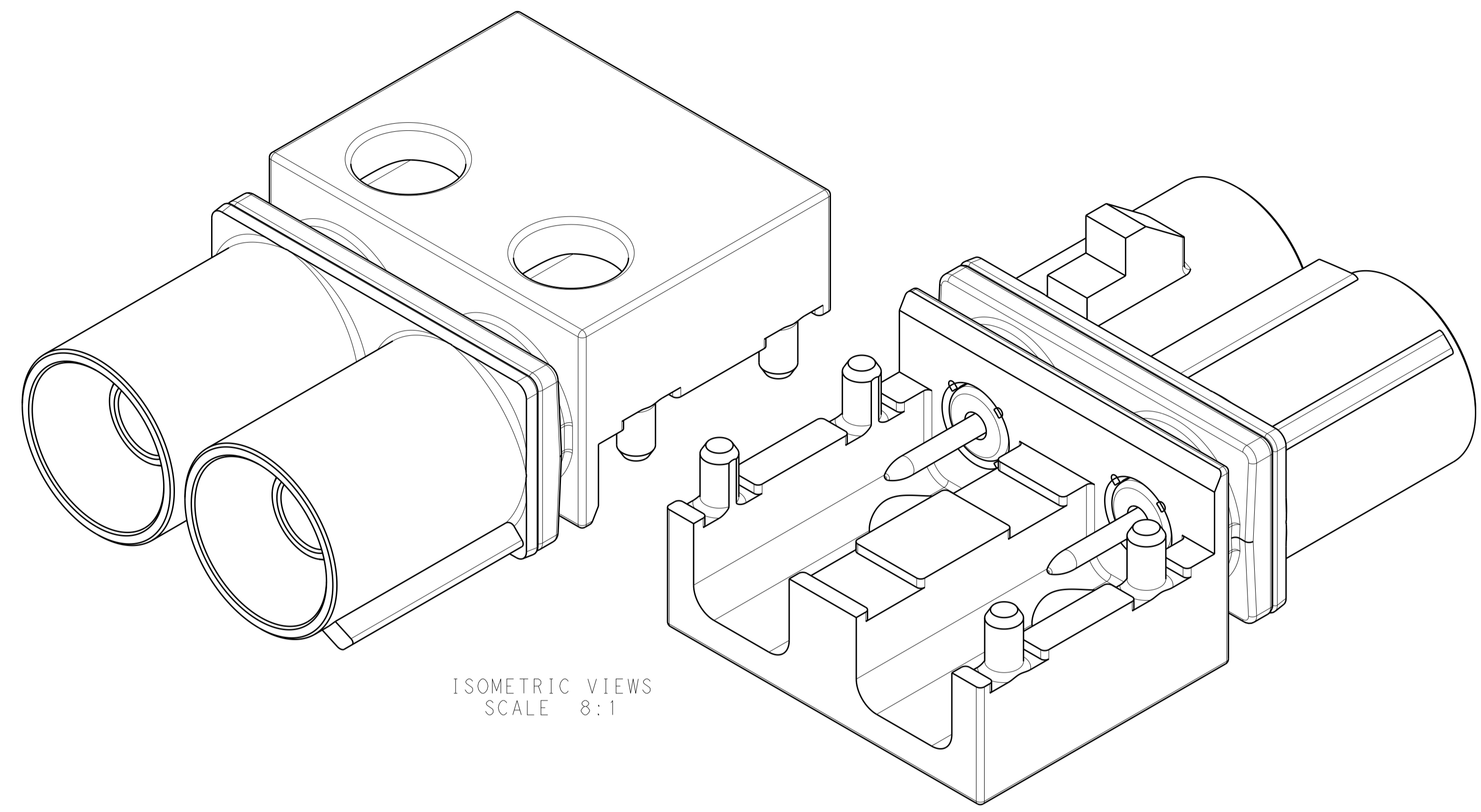


LOC	DIST	REVISIONS			
		REV	DATE	BY	CHKD
IN	00	E	29 JAN 2016	ERL	ERL
		E1	25 APR 2016	ERL	ERL
		F	27 JUN 2016	JAB	ERL
		F1	27 JAN 2020	KP	MB



ISOMETRIC VIEWS
SCALE 8:1

- ① NOSE CONE - NYLON, COLOR: SEE TABLE, 25% GLASS FILLED.
DIELECTRIC - POLYESTER PCT, NATURAL, 30% GLASS FILLED.
PIN CONTACT - BRASS.
OUTER SHELL - ZINC.
- ② PIN CONTACT - 0.38µm MIN GOLD ON INTERFACE END,
2.5µm MIN TIN ON SOLDER END,
BOTH OVER 1.3µm MIN NICKEL.
OUTER SHELL - 2.0µm MIN TIN OVER 1.52µm MIN NICKEL,
BOTH OVER 2.54µm MIN COPPER.
- ③ REMOVED
- ④ MINIMUM SIGNAL PAD FOR SOLDER.
- ⑤ MINIMUM RECOMMENDED GROUND PLANE.
- ⑥ SIGNAL DIMENSION TRACE RECOMMENDED FOR OPTIMUM SIGNAL PERFORMANCE.
- ⑦ VACUUM PICKUP AREA.
- ⑧ MALE INTERFACE PER SAE/USCAR-18 REVISION 3, ROAD VEHICLES 50 Ohm RADIO FREQUENCY INTERFACE.
- ⑨ REELING VIEW FOR REFERENCE ONLY TO SHOW UNREELING DIRECTION

FINISH	PACKAGING	CODING DETAIL	NOSE CONE COLOR	CODING REF	PART NUMBER		
②	TAPE AND REEL	PER DETAIL Z	WATER BLUE	Z	7-2287922-0		
		PER DETAIL N	PASTEL GREEN	N	6-2287922-3		
		PER DETAIL M	PASTEL ORANGE	M	6-2287922-2		
		PER DETAIL L	CARMINE RED	L	6-2287922-1		
		PER DETAIL K	CURRY	K	6-2287922-0		
		PER DETAIL I	BEIGE	I	5-2287922-9		
		PER DETAIL H	HEATHER VIOLET	H	5-2287922-8		
		PER DETAIL G	BLUE GREY	G	5-2287922-7		
		PER DETAIL F	NUT BROWN	F	5-2287922-6		
		PER DETAIL E	LEAF GREEN	E	5-2287922-5		
		PER DETAIL D	CLARET VIOLET	D	5-2287922-4		
		PER DETAIL C	SIGNAL BLUE	C	5-2287922-3		
		PER DETAIL B	CREAM	B	5-2287922-2		
		PER DETAIL A	JET BLACK	A	5-2287922-1		
		②	TRAY	PER DETAIL Z	WATER BLUE	Z	2-2287922-0
				PER DETAIL N	PASTEL GREEN	N	1-2287922-3
				PER DETAIL M	PASTEL ORANGE	M	1-2287922-2
				PER DETAIL L	CARMINE RED	L	1-2287922-1
				PER DETAIL K	CURRY	K	1-2287922-0
PER DETAIL I	BEIGE			I	2287922-9		
PER DETAIL H	HEATHER VIOLET			H	2287922-8		
PER DETAIL G	BLUE GREY			G	2287922-7		
PER DETAIL F	NUT BROWN			F	2287922-6		
PER DETAIL E	LEAF GREEN			E	2287922-5		
PER DETAIL D	CLARET VIOLET			D	2287922-4		
PER DETAIL C	SIGNAL BLUE			C	2287922-3		
PER DETAIL B	CREAM			B	2287922-2		
PER DETAIL A	JET BLACK			A	2287922-1		

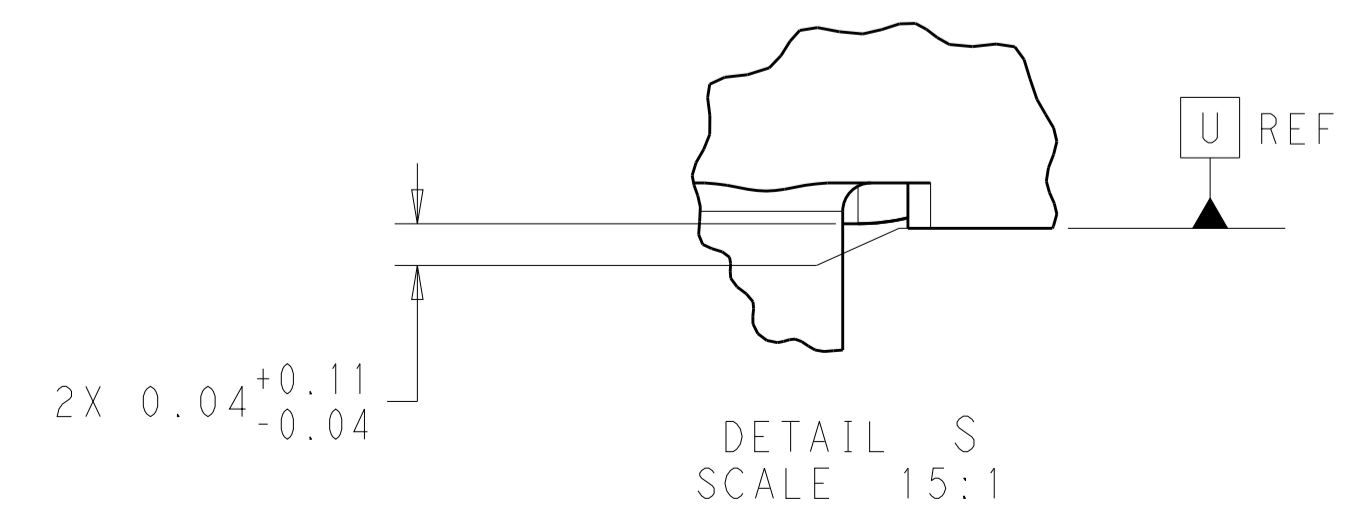
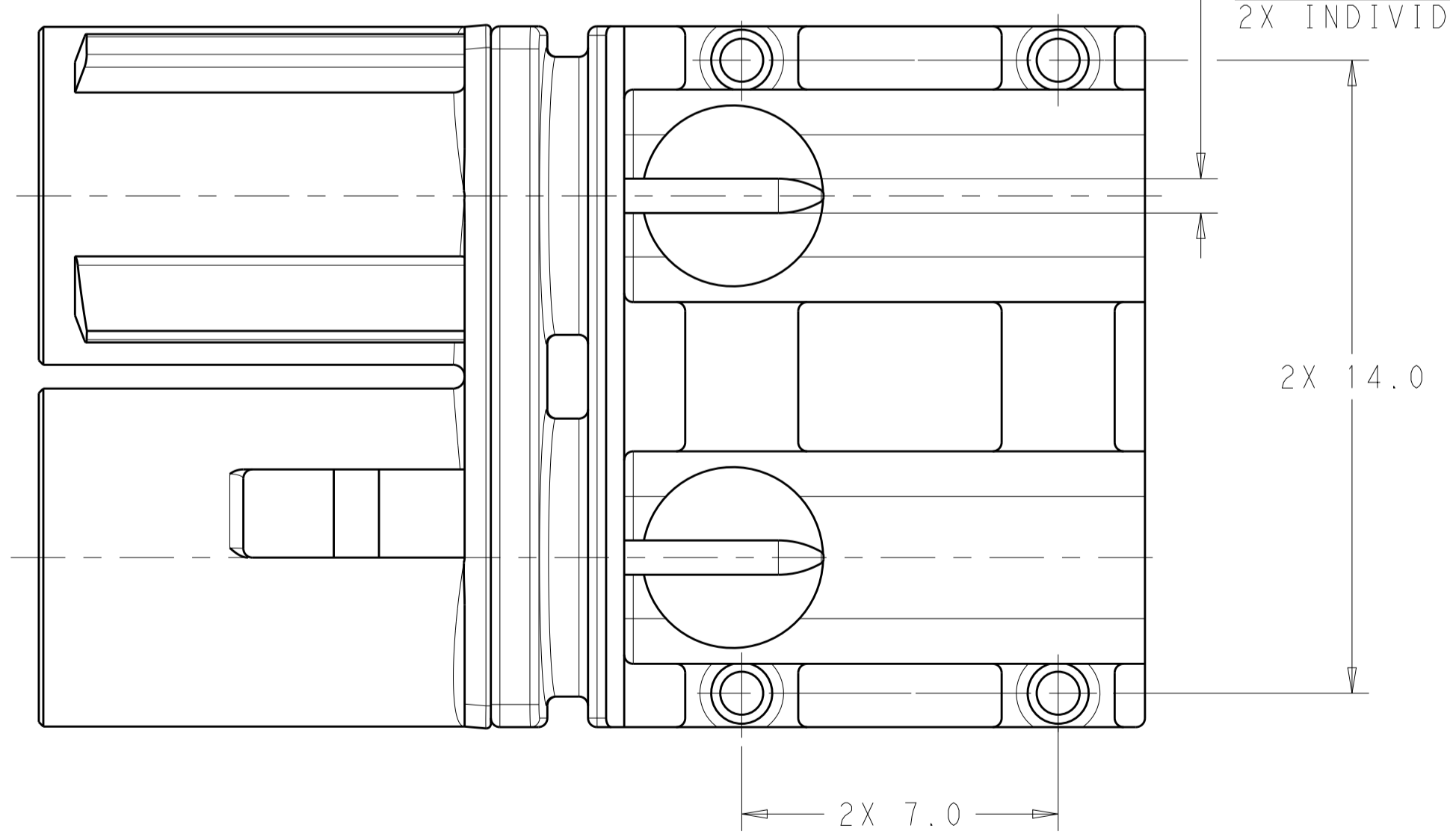
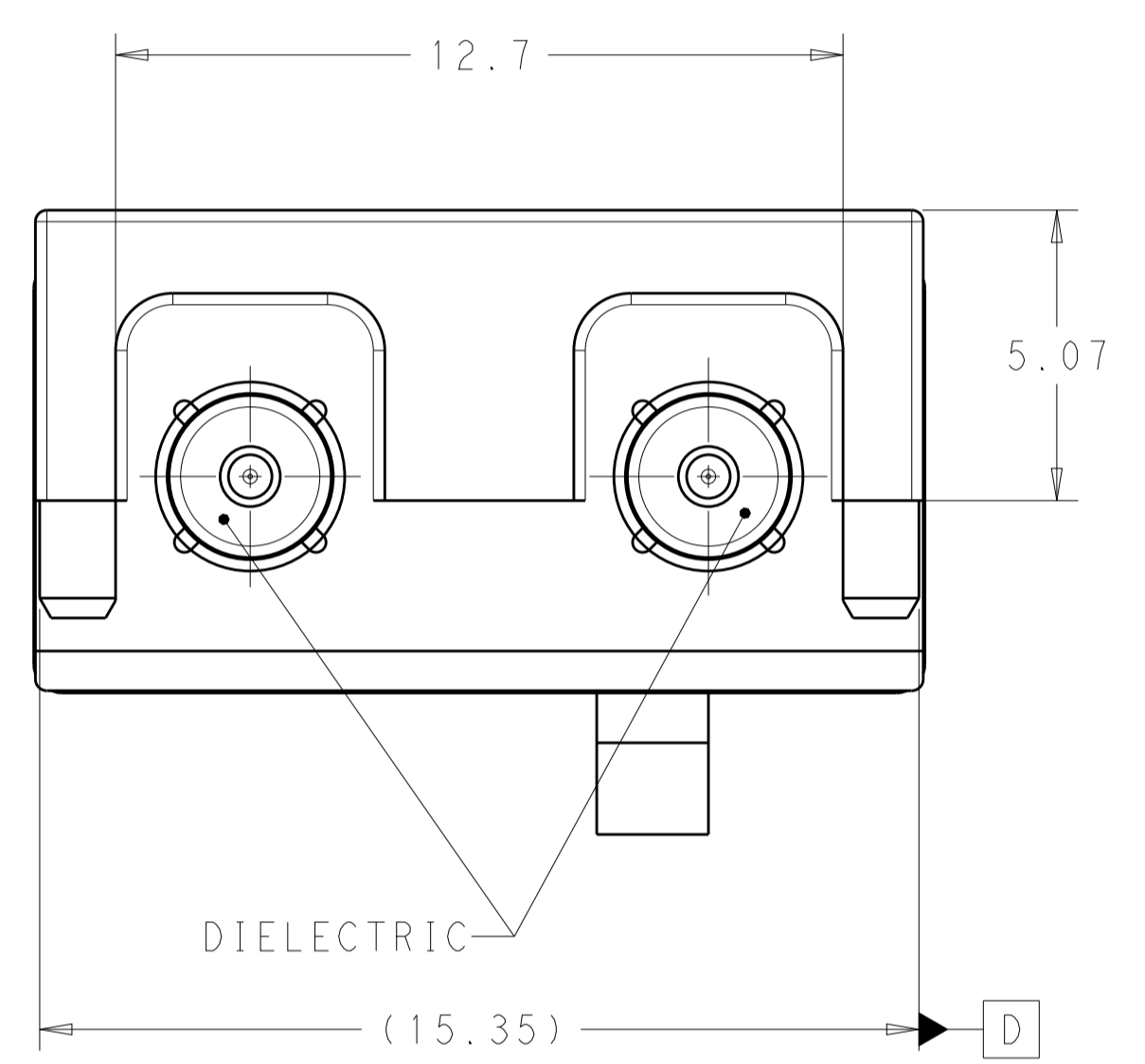
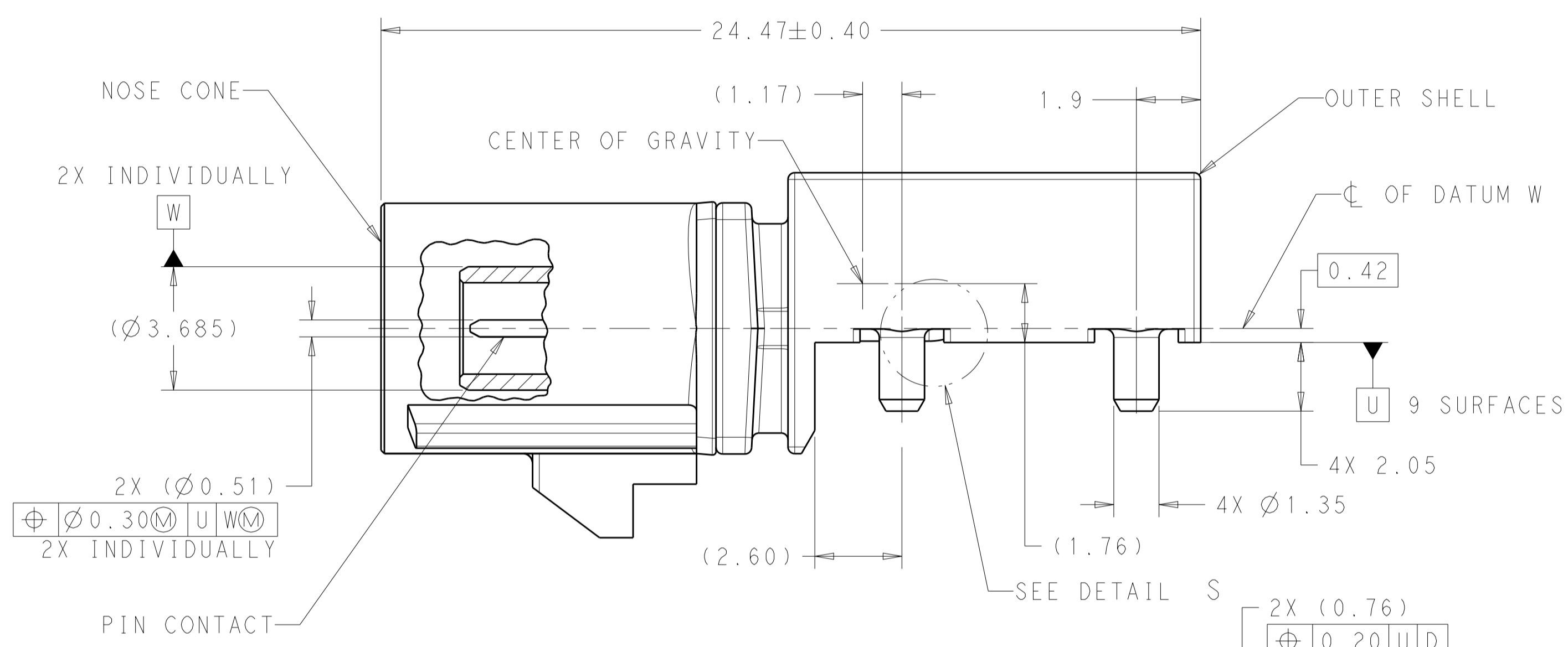
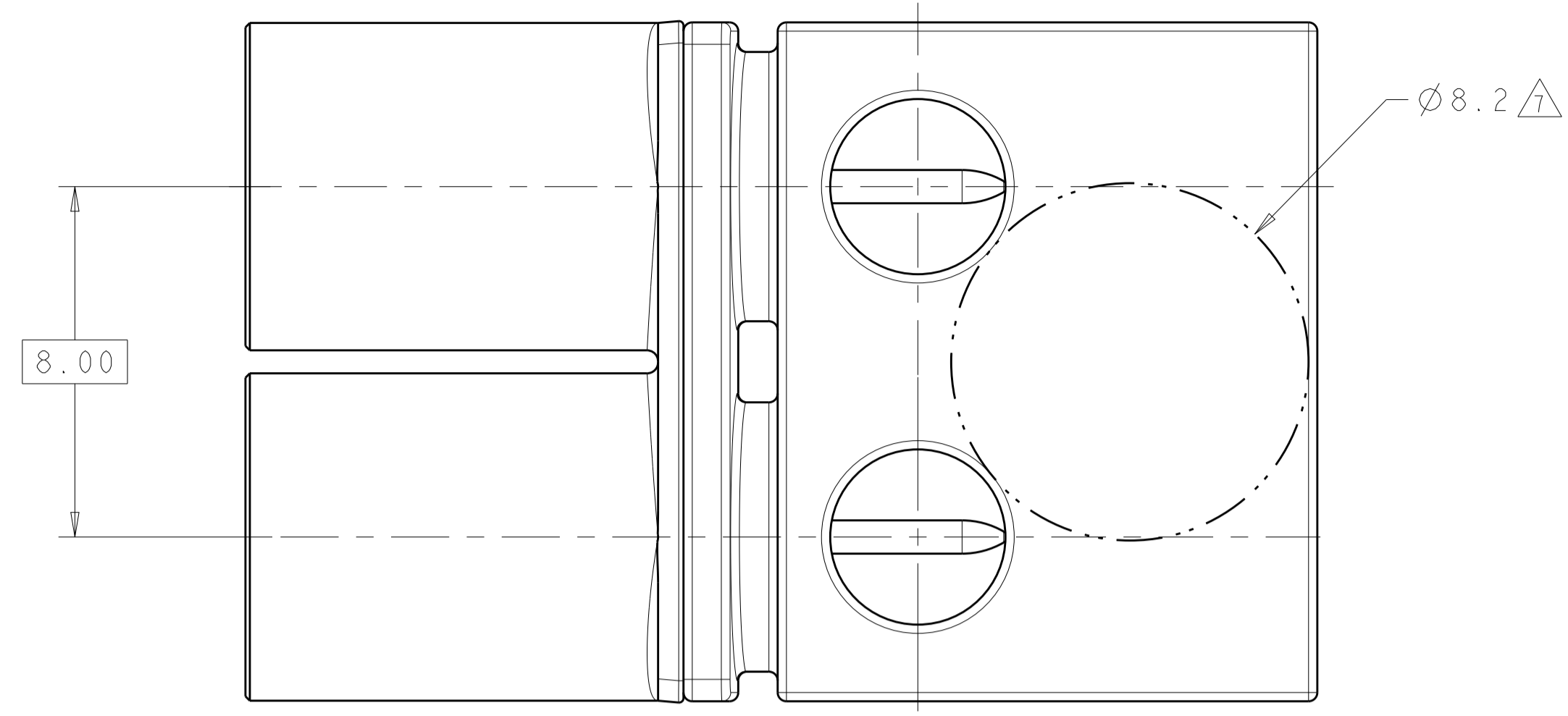
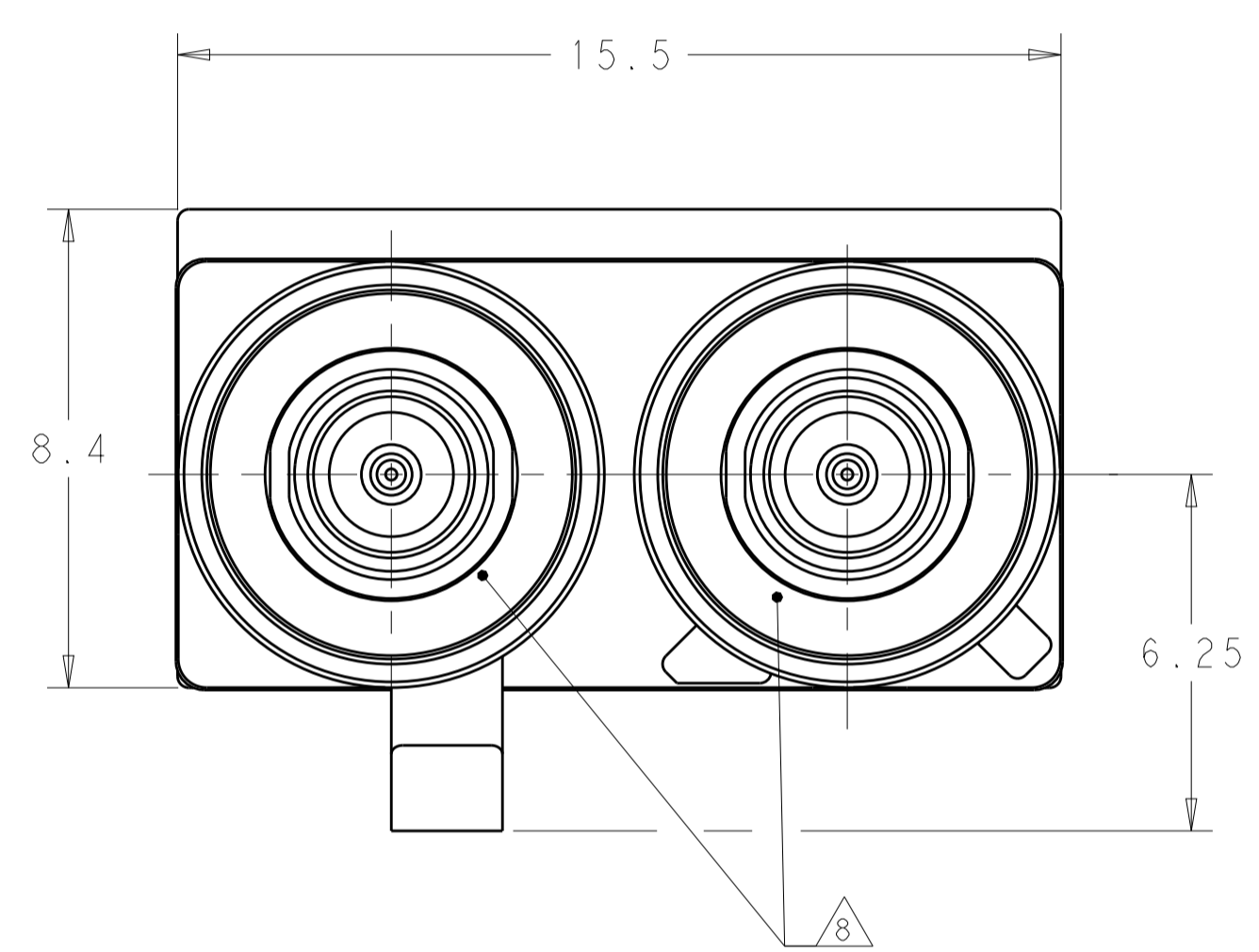
THIS DRAWING IS A CONTROLLED DOCUMENT.

DIMENSIONS: mm
 TOLERANCES UNLESS OTHERWISE SPECIFIED:
 0 PLC ±0.2
 1 PLC ±0.2
 2 PLC ±0.08
 3 PLC ±0.08
 4 PLC ±0.08
 ANGLES ±0.5°
 FINISH SEE TABLE

DWN J.A.BAKER 06OCT2014
 CHK D.J.LANE 06OCT2014
 APVD D.J.LANE 06OCT2014

STE TE Connectivity
 NAME MALE ASSEMBLY, 2 POSITION, 6 O'CLOCK, EDGE MOUNT, PCB, FAKRA
 PRODUCT SPEC 108-32058
 APPLICATION SPEC 114-32108
 WEIGHT 6.23g
 SIZE CAGE CODE DRAWING NO. RESTRICTED TO A100779C=2287922
 CUSTOMER DRAWING SCALE 8:1 SHEET 1 OF 3 REV F1

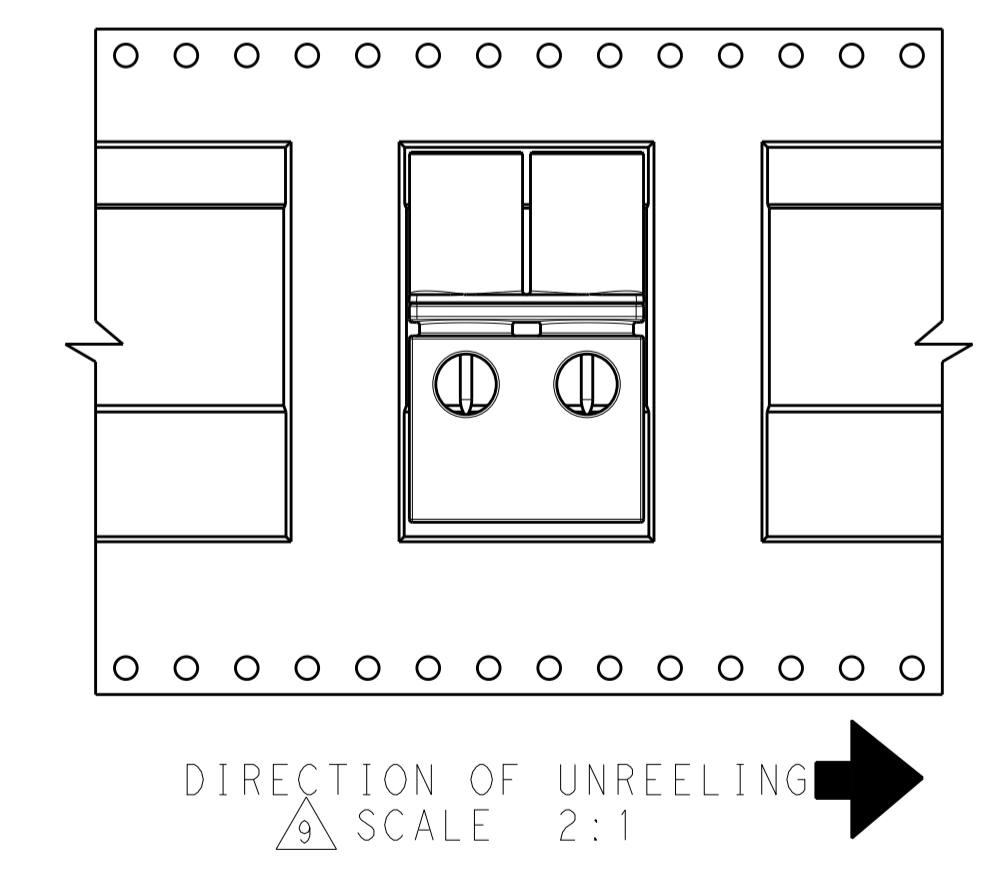
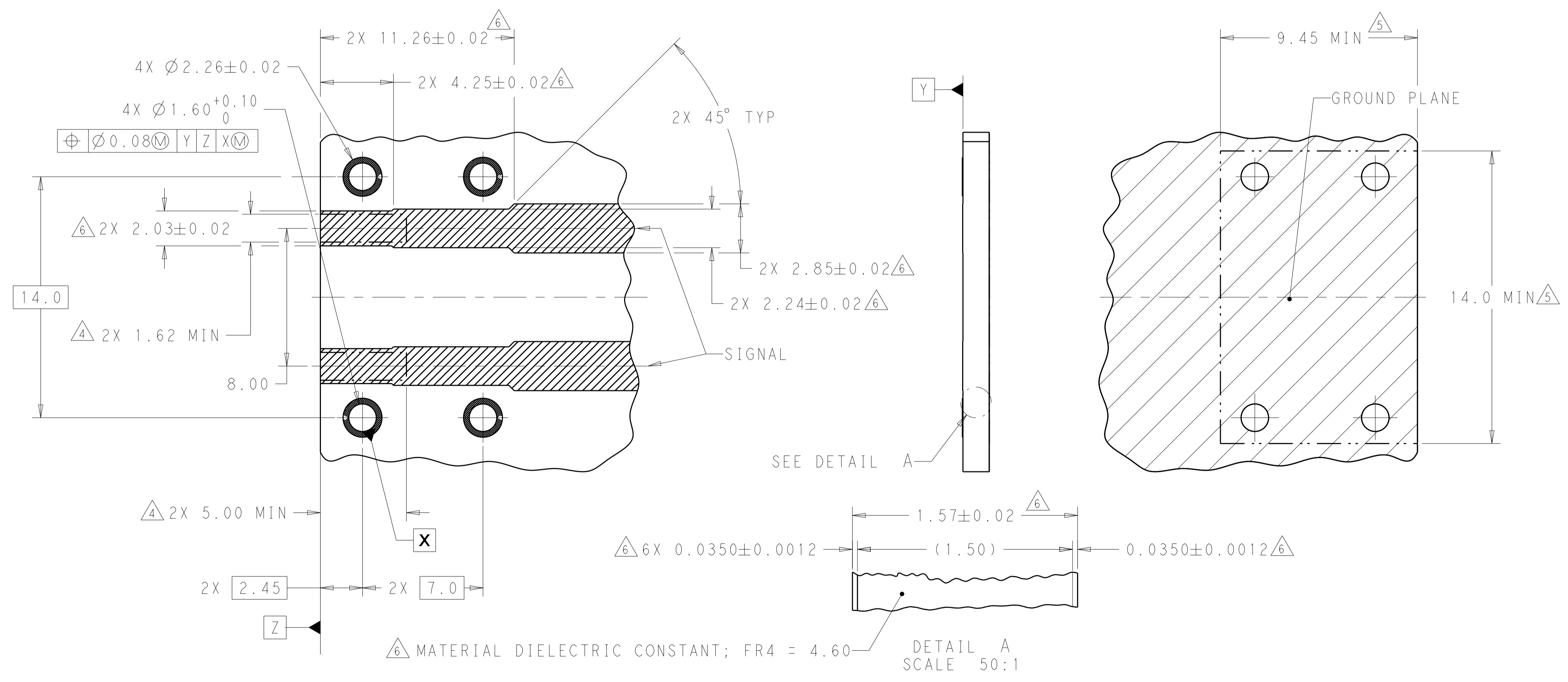
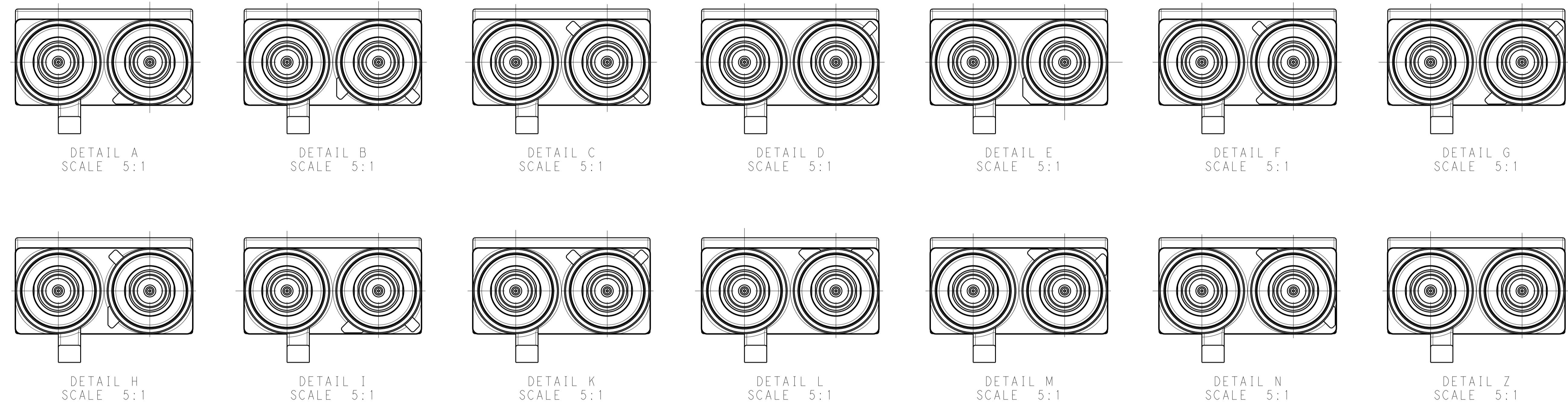
LOC		DIST		REVISIONS			
IN	00	P	LTN	DESCRIPTION	DATE	DWN	APVD
		-		SEE SHEET 1			



THIS DRAWING IS A CONTROLLED DOCUMENT.		DWN: J.A. BAKER 06OCT2014	TE Connectivity
DIMENSIONS: mm		CHK: D.J. LANE 06OCT2014	
TOLERANCES UNLESS OTHERWISE SPECIFIED:		APVD: D.J. LANE 06OCT2014	NAME: MALE ASSEMBLY, 2 POSITION, 6 O'CLOCK, EDGE MOUNT, PCB, FAKRA
0 PLC	±	PRODUCT SPEC	SIZE: CAGE CODE DRAWING NO
1 PLC	±0.2	108-32058	RESTRICTED TO
2 PLC	±0.08	APPLICATION SPEC	A100779C=2287922
3 PLC	±	114-32108	SCALE: 8:1 SHEET 2 OF 3 REV: F1
4 PLC	±	WEIGHT: 6.23g	
ANGLES	±	CUSTOMER DRAWING	
MATERIAL:	SEE TABLE		

LOC	DIST	REV	DATE	BY	APPV
IN	00				
REVISIONS					

CODINGS



THIS DRAWING IS A CONTROLLED DOCUMENT.		DWN J.A.BAKER 06OCT2014	TE Connectivity
DIMENSIONS: mm		CHK D.J.LANE 06OCT2014	
TOLERANCES UNLESS OTHERWISE SPECIFIED:		APVD D.J.LANE 06OCT2014	NAME MALE ASSEMBLY, 2 POSITION, 6 O'CLOCK, EDGE MOUNT, PCB, FAKRA
0 PLC \pm		PRODUCT SPEC	SIZE CAGE CODE DRAWING NO RESTRICTED TO
1 PLC ± 0.2		108-32058	A100779C=2287922
2 PLC ± 0.08		APPLICATION SPEC	SCALE 8:1 SHEET 3 OF 3 REV F1
3 PLC \pm		114-32108	
4 PLC \pm		WEIGHT 6.23g	
ANGLES \pm		CUSTOMER DRAWING	
FINISH SEE TABLE			