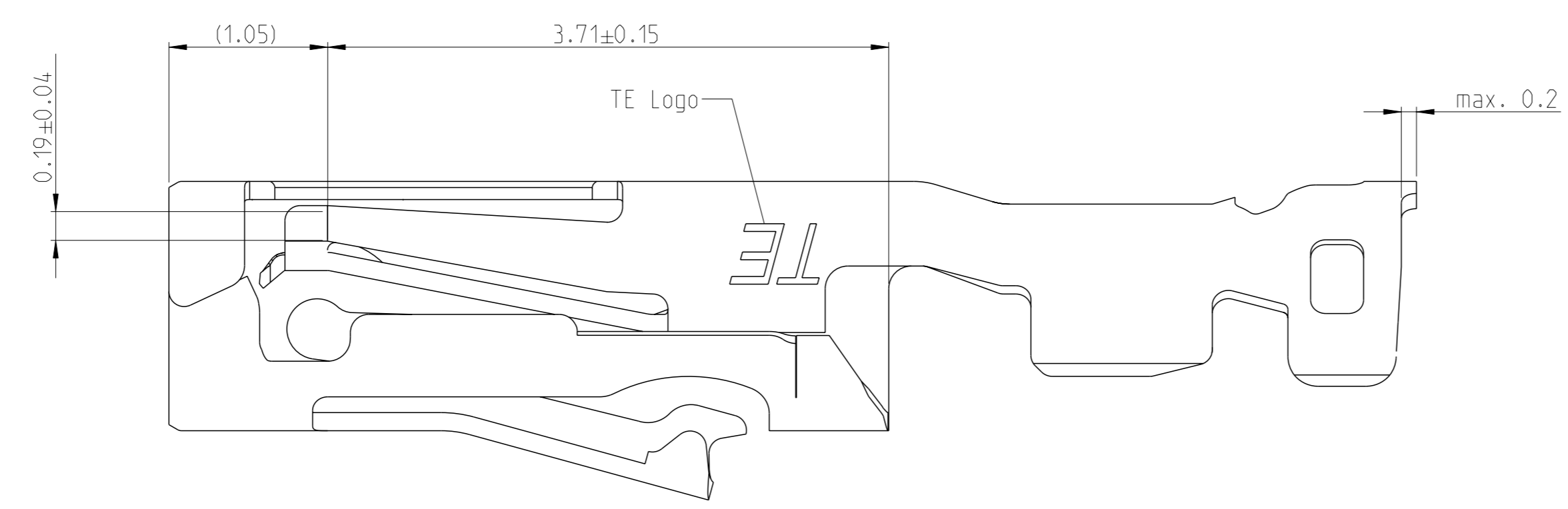
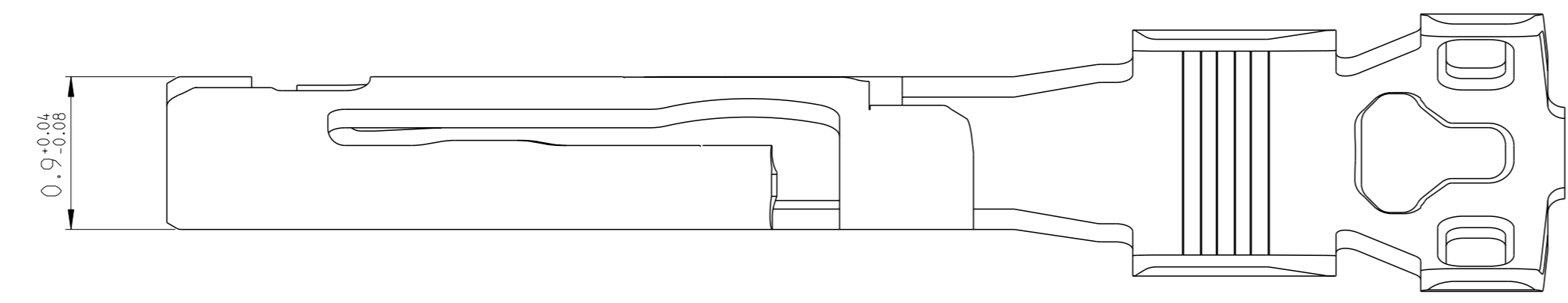
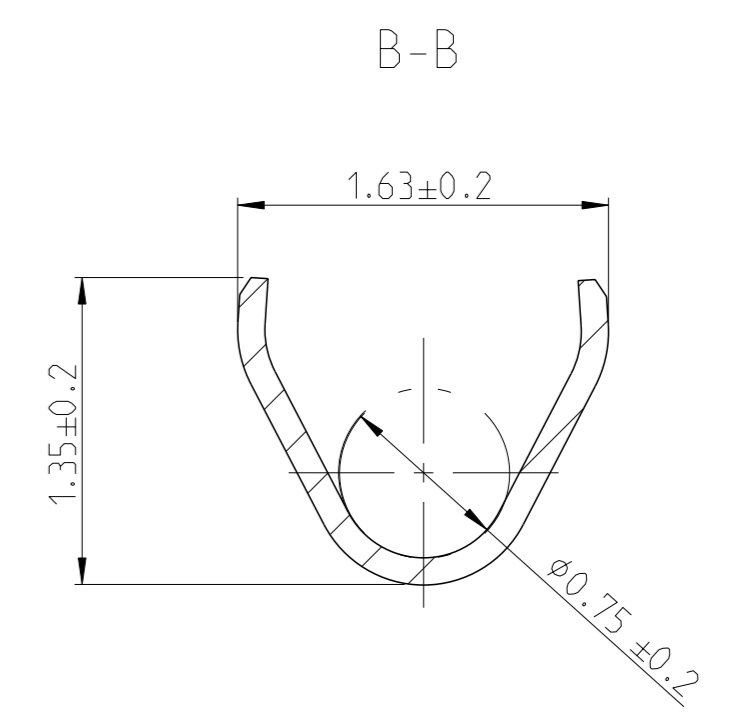
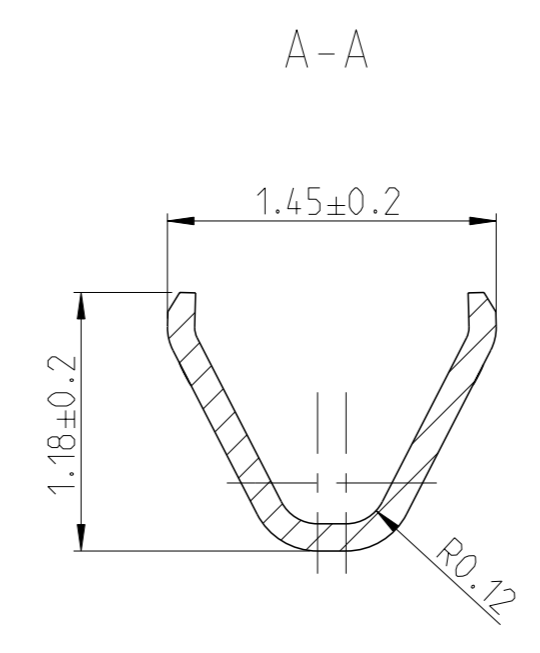
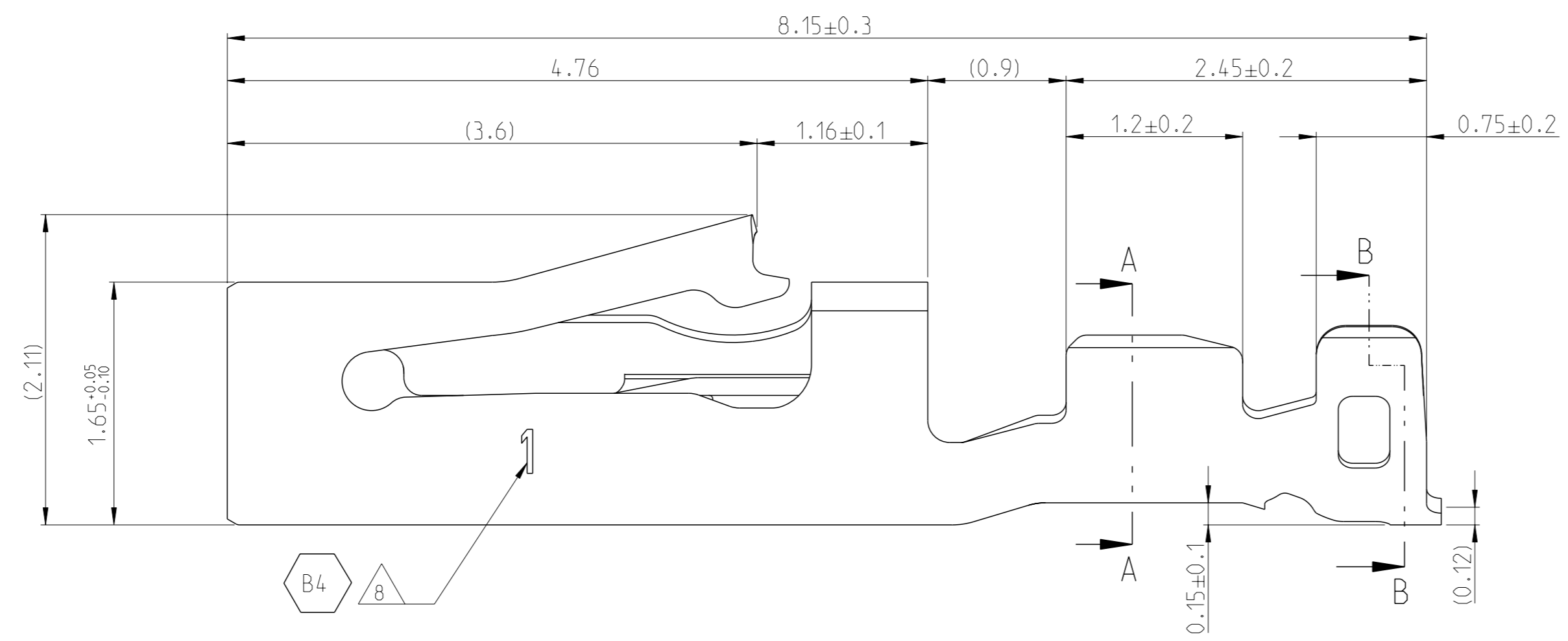
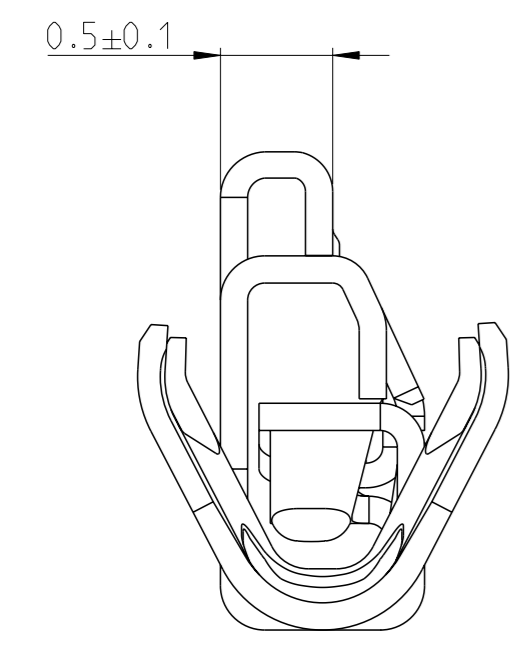
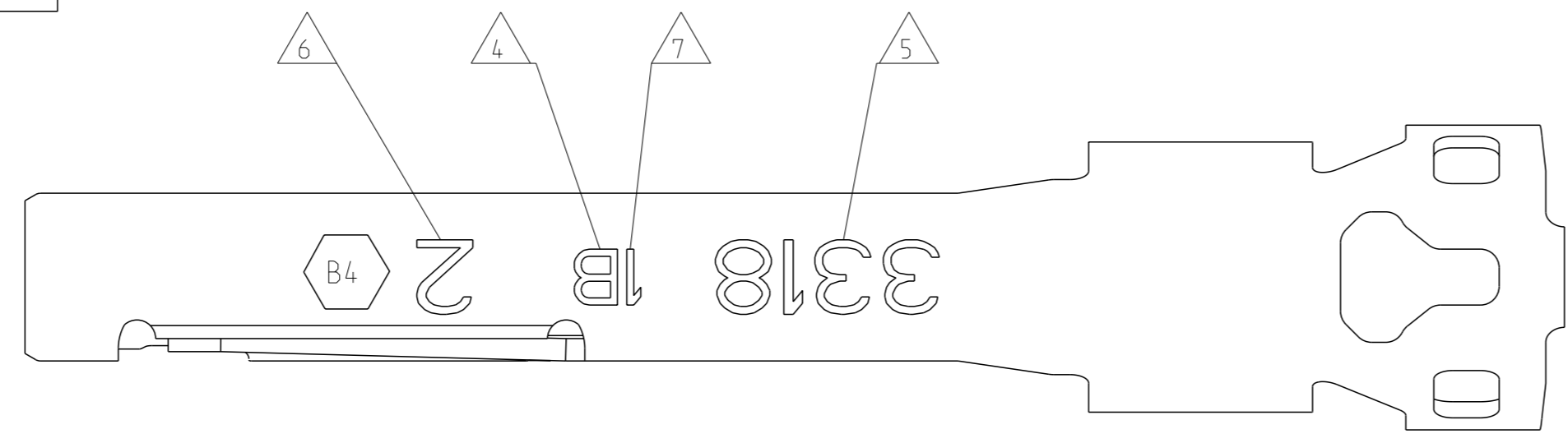


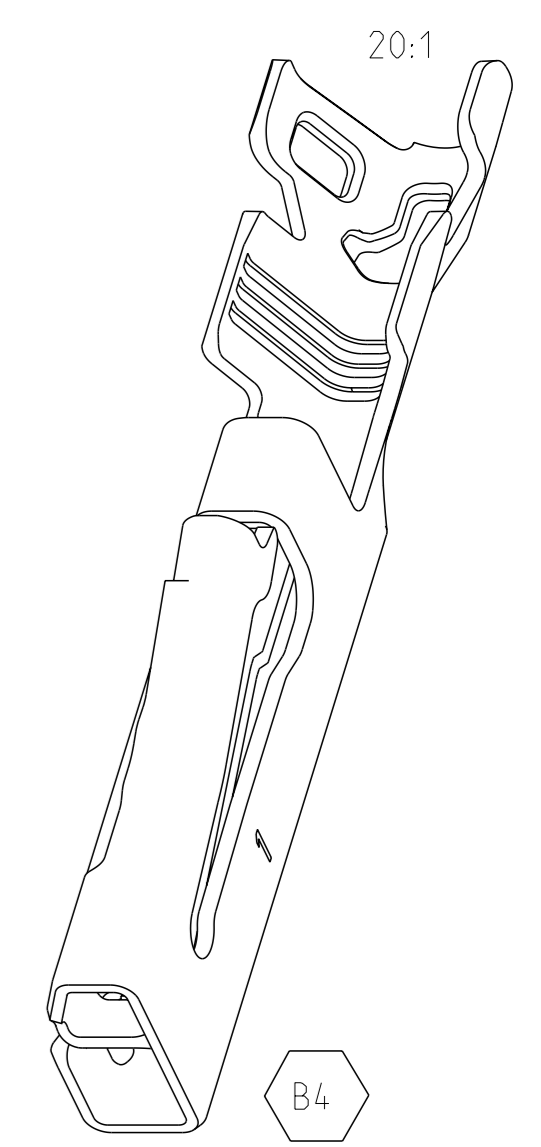
REVISIONS					
#	CLM	DESCRIPTION	DATE	DWN	APVD
B1		PN 1-2287720-3 AND 1-2287720-1 REMOVED	14MAY2019	HO.	AOe
B2		TABLE ADAPTED	24SEP2019	HO.	AOe
B3		REMOVE LOCATION CODE	10DEC2020	HERT	AOe
B4		TABLE UPDATED AND NOTE ADDED	30MAY2023	MCG	SPEG



NOTES  
Bemerkungen

- IN CASE OF DISCREPANCIES THE GERMAN TEXT IS VALID  
Im Zweifelsfall ist der deutsche Text bindend
- DETAILS OF DESIGN ARE LEFT TO THE MANUFACTURER  
Einzelheiten der Ausfuehrung bleiben dem Hersteller ueberlassen
- SUITABLE TO CONTACT-PIN: TE 114-94419  
Passend zu Kontaktstift: TE 114-94419

- △ TE-REVISION  
TE-Revision
- △ DATE-CODE (WEEK/YEAR)  
Datumscode (Woche/Jahr)
- △ MARKING: SEE TABLE  
Markierung: siehe Tabelle
- △ DIE IDENTIFICATION NUMBER  
Werkzeugkennzeichnung
- △ TRACK ALLOCATION IN TWO TRACK DIES  
Spurzuordnung in Zweispurwerkzeug



2-2287720-1	B	2	CuNi3SiMg	PRE TIN (0.8-3 µm)	0.95-1.05	0.13-0.22	0.027
PN	REV.	MARKING △ 6	MATERIAL	Beschichtung Kontaktpunkt SURFACE CONTACT POINT	INSUL.DIA ISOφ (mm)	WIRE-SIZE DGB (mm <sup>2</sup> )	Gewicht WEIGHT (g)

THIS DRAWING IS A CONTROLLED DOCUMENT. DIMENSIONING AND TOLERANCING PER GPS (ISO STANDARDS). TOLERANCES UNLESS OTHERWISE SPECIFIED:

DIMENSIONS:	mm	0 ALC ±0.1	1 PLC ±0.1	2 PLC ±0.01	3 PLC ±0.005	4 ALC ±0.1	
TOLERANCING ISO 8015	TOLERIERUNG ISO 8015	TOLERANZEN UNLESS OTHERWISE SPECIFIED:					FINISH
MATERIAL	SEE TABLE	SEE TABLE	SEE TABLE	SEE TABLE	SEE TABLE	SEE TABLE	

OWN: A. Oettle 12DEC2016  
 DESIGNED: S. Raab 12DEC2016  
 APVD: M. Burghard  
 NAME: PicoMQS CONTACT  
 PRODUCT SPEC: Buchsenkontakt  
 APPLICATION SPEC: SOCKET CONTACT  
 SIZE: 114-94424  
 WEIGHT: SEE TABLE  
 CUSTOMER DRAWING: A1 00779 ©=2287720  
 SCALE: 30:1 SHEET 1 OF 1 REV: B4

DIESE ZEICHNUNG IST EIN KONTROLLIERTES DOKUMENT.  
 BEMESSUNGEN UND TOLERANZEN GEMÄSS GPS (ISO STANDARDS).