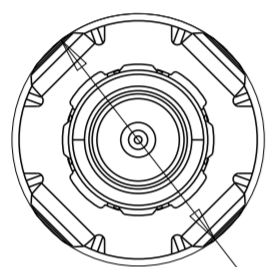


THIS DRAWING IS UNPUBLISHED. RELEASED FOR PUBLICATION  
 © COPYRIGHT copyright\_d8Te- ALL RIGHTS RESERVED.

| CUSTOMER DESCRIPTION      | CUSTOMER PART NUMBER | TE PART NUMBER |
|---------------------------|----------------------|----------------|
| CONN WTB COAXIAL V PIP TE | 3140 360 22321       | 2278742-1      |
| CONN WTB COAXIAL V PIP TE | 3140 360 24021       | 2278742-3      |

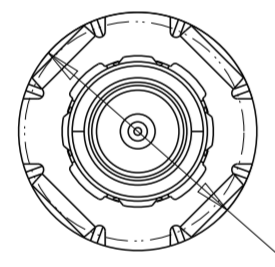
NOTE,

- 1. PARTS MATERIAL, SEE THE TABLE
- 2. PLATING THICKNESS, SEE THE TABLE
- 3. PACKAGING: TAPE & REEL
- 4. THE INTERFACE COMPLY WITH FAKRA II AS PER ISO20860-1 OR EQUIVALENT DIN/USCAR
- 5. SOLDERING AREA
- 6. VACUUM PICK-UP AREA
- 7. THE PICK-UP CAP SHOULD BE REMOVED AFTER SOLDERING REFLOW
- A1 8. RECOMMENDED SPRING HEIGHT IN FIXTURE STATE IN CAMERA ASSY  $4 \pm 0.25$  mm.



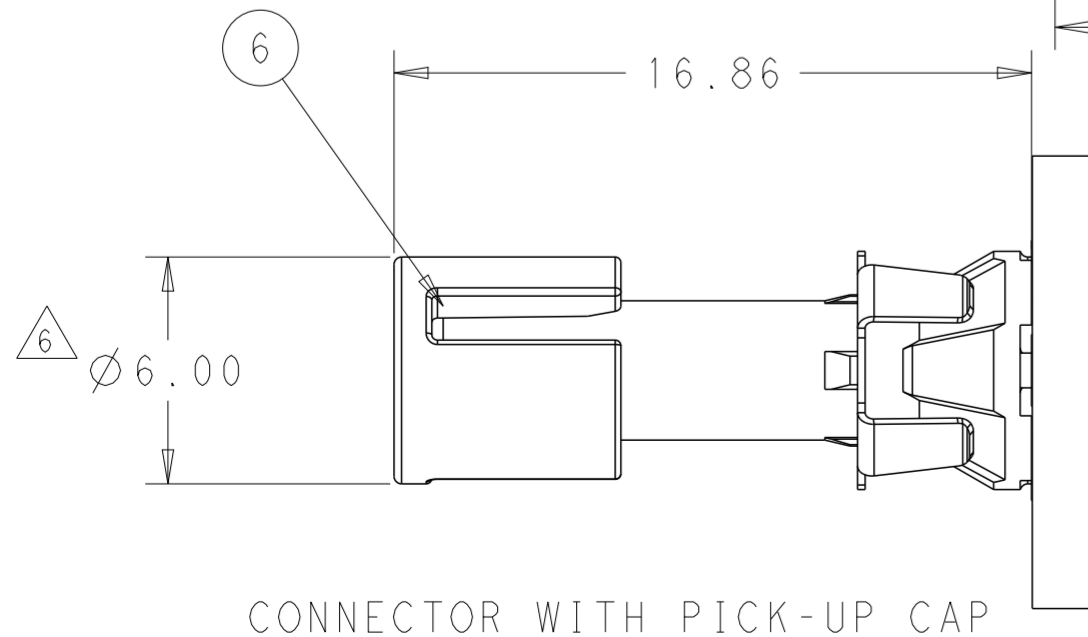
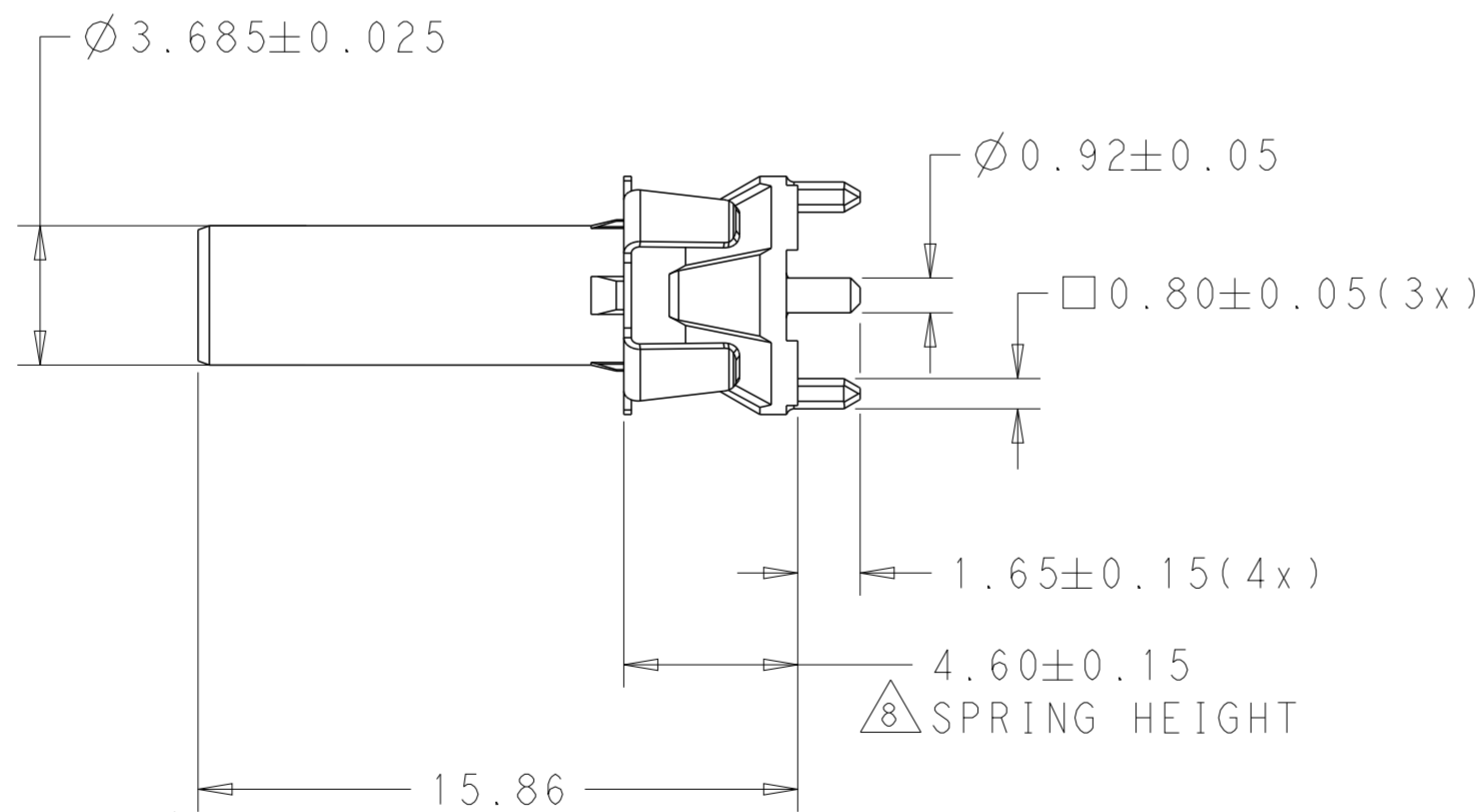
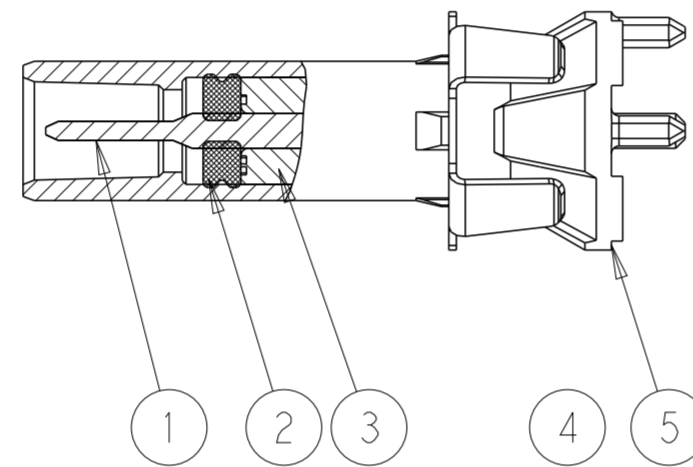
( $\phi 7.00$  MAX.)

SPRING OUTER DIAMETER  
 AFTER BEING PRESSED  
 (SPRING HEIGHT=3.75mm)



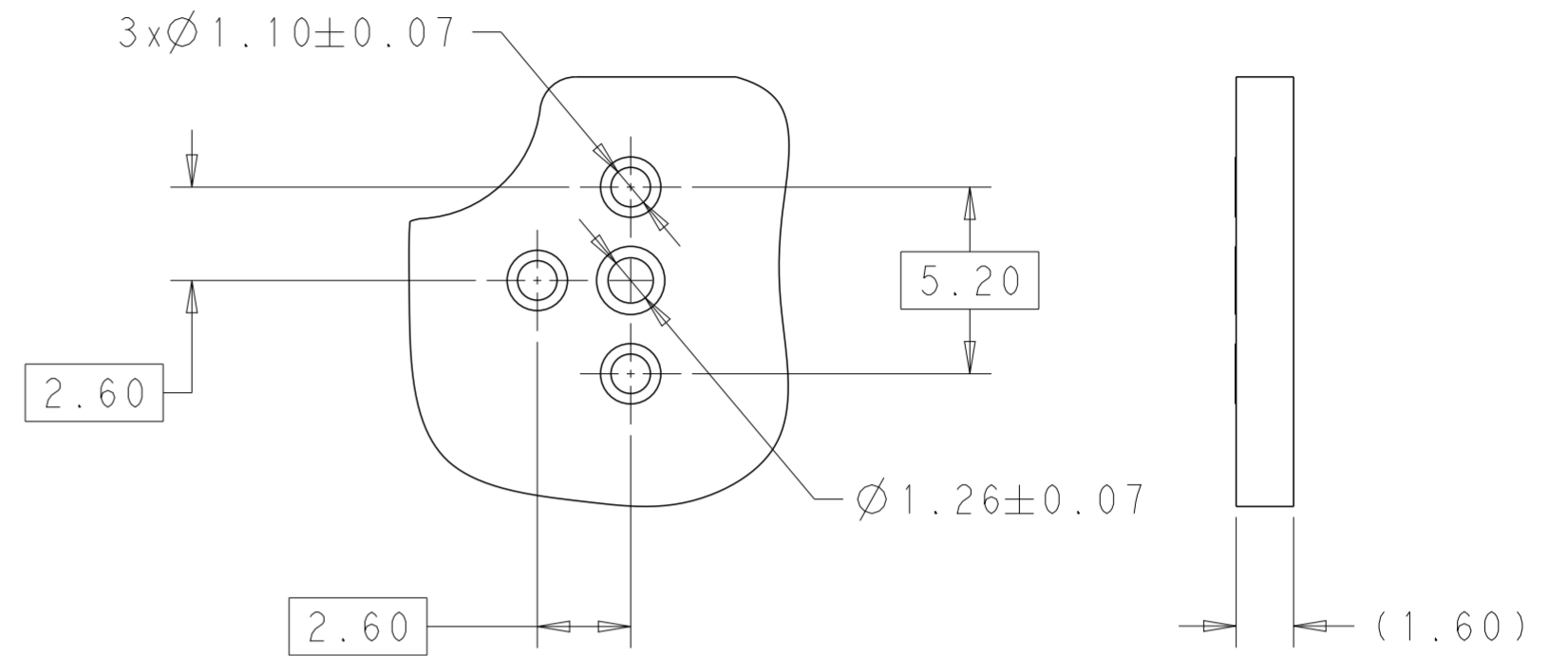
$\phi 6.30$

SPRING OUTER DIAMETER  
 BEFORE BEING PRESSED

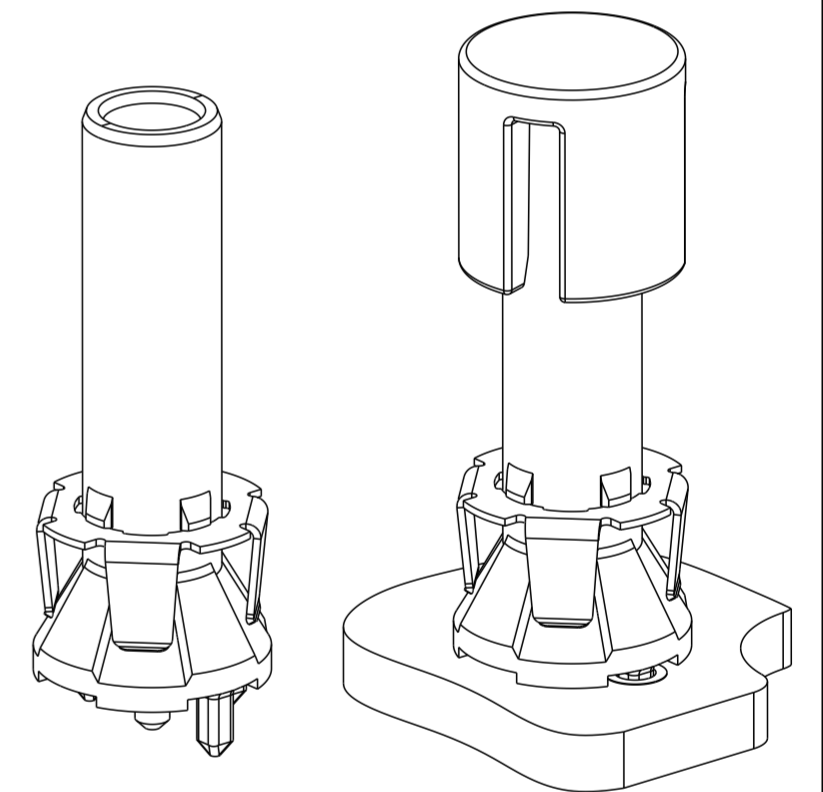
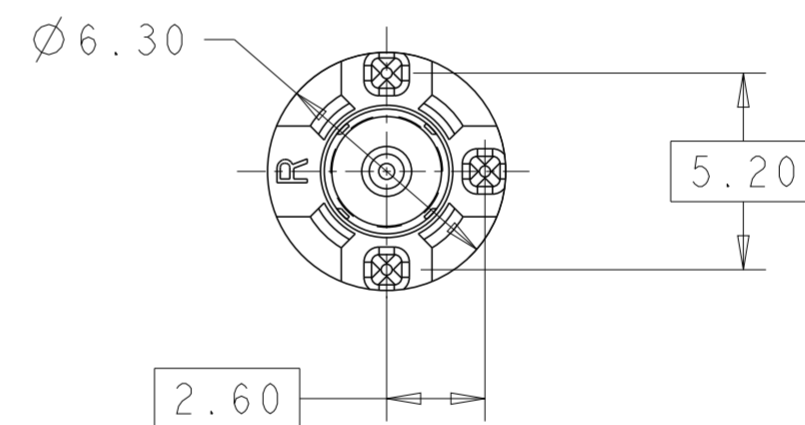


CONNECTOR WITH PICK-UP CAP

| REVISIONS |     |                       |         |         |
|-----------|-----|-----------------------|---------|---------|
| P         | LTR | DESCRIPTION           | DATE    | APVD    |
| A         |     | RELEASE TO PRODUCTION | 27JUN17 | KQ IY   |
| A1        |     | REVISED ECR-22-156327 | 21OCT22 | L.L C.P |



A1 RECOMMENDED PCB LAYOUT FOR PN:2278742-1



| DESCRIPTION    | QTY. | FINISHED SURFACE                                                                                                    | MATERIAL        | ITEM NO. |
|----------------|------|---------------------------------------------------------------------------------------------------------------------|-----------------|----------|
| PICK-UP CAP    | 1    | -                                                                                                                   | PA              | 6        |
| SHELL          | 1    | SOLDERING POST: 0.25 $\mu$ m MIN. TIN<br>OVER 0.2 $\mu$ m MIN. NICKEL                                               | Zn ALLOY        | 5        |
| SPRING         | 1    | -                                                                                                                   | STAINLESS STEEL | 4        |
| DIELECTRIC     | 1    | -                                                                                                                   | PCT             | 3        |
| SEAL RING      | 1    | -                                                                                                                   | VMQ             | 2        |
| CENTER CONTACT | 1    | 0.8 $\mu$ m MIN. GOLD ON MATING AREA<br>2.5 $\mu$ m MIN. TIN ON TERMINAL AREA<br>BOTH OVER 1.27 $\mu$ m MIN. NICKEL | BRASS           | 1        |

THIS DRAWING IS A CONTROLLED DOCUMENT.

|      |       |          |
|------|-------|----------|
| DWN  | F.PAN | 15SEP214 |
| CHK  | F.PAN | 15SEP214 |
| APVD | P.WU  | 15SEP214 |

NAME: FAKRA HEADER  
0.92 CENTER PIN W/O NOSE  
PIP

PRODUCT SPEC: 108-101489

APPLICATION SPEC: -

WEIGHT: 0.95g

SCALE: 10:1

SHEET 1 OF 2

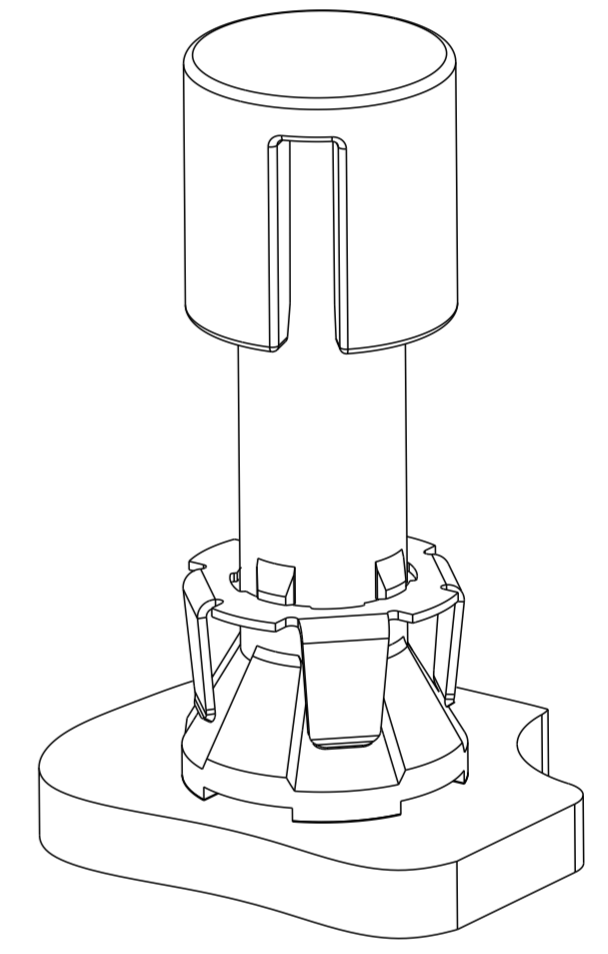
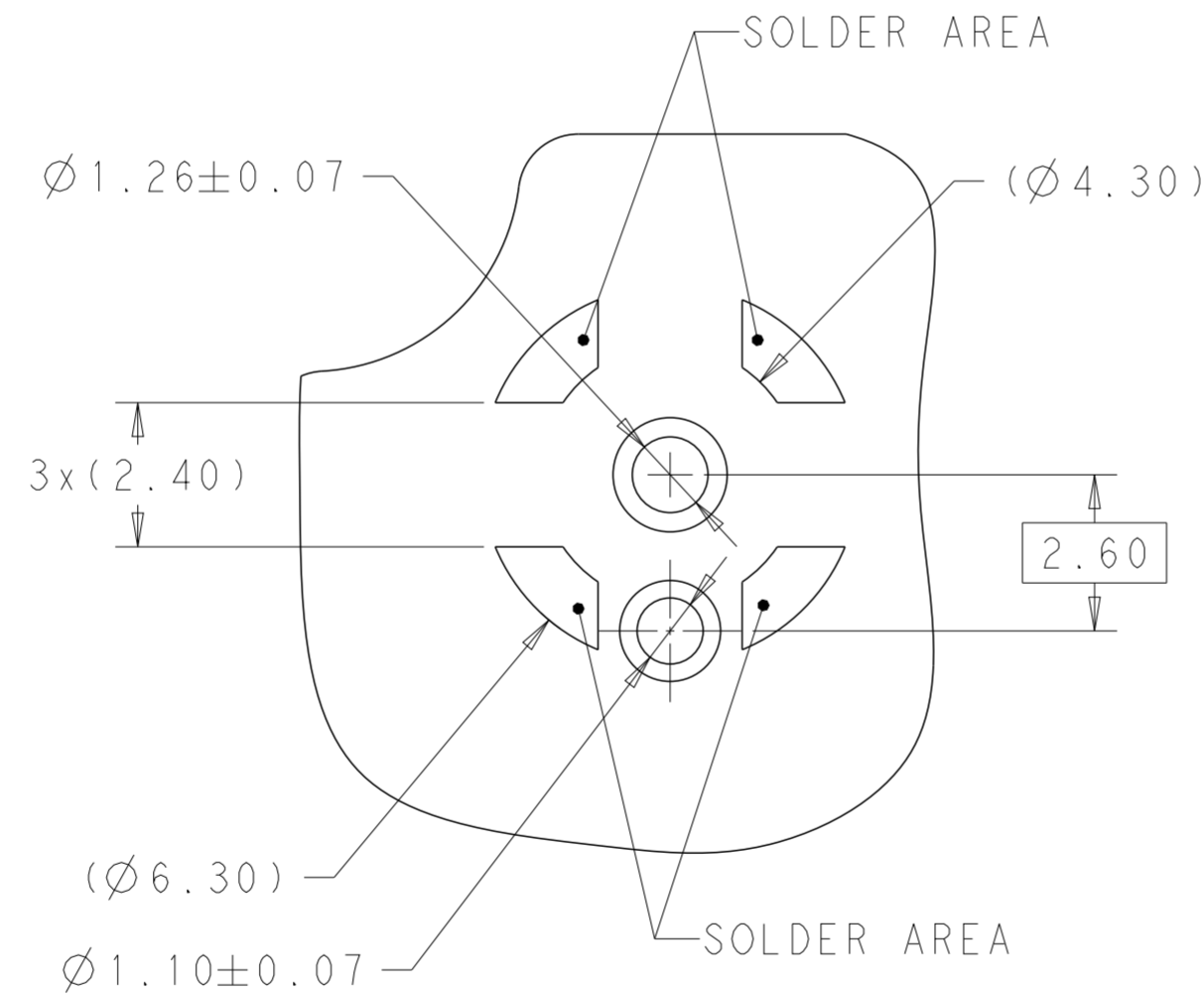
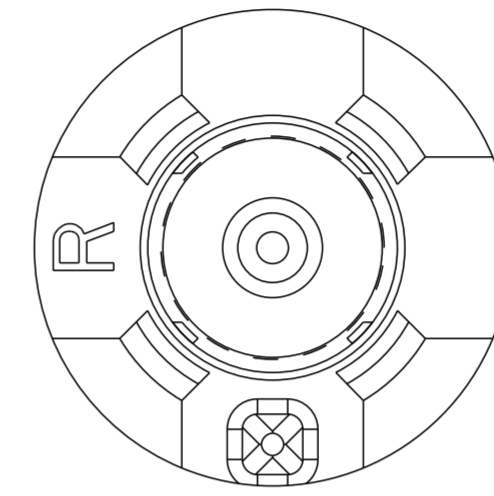
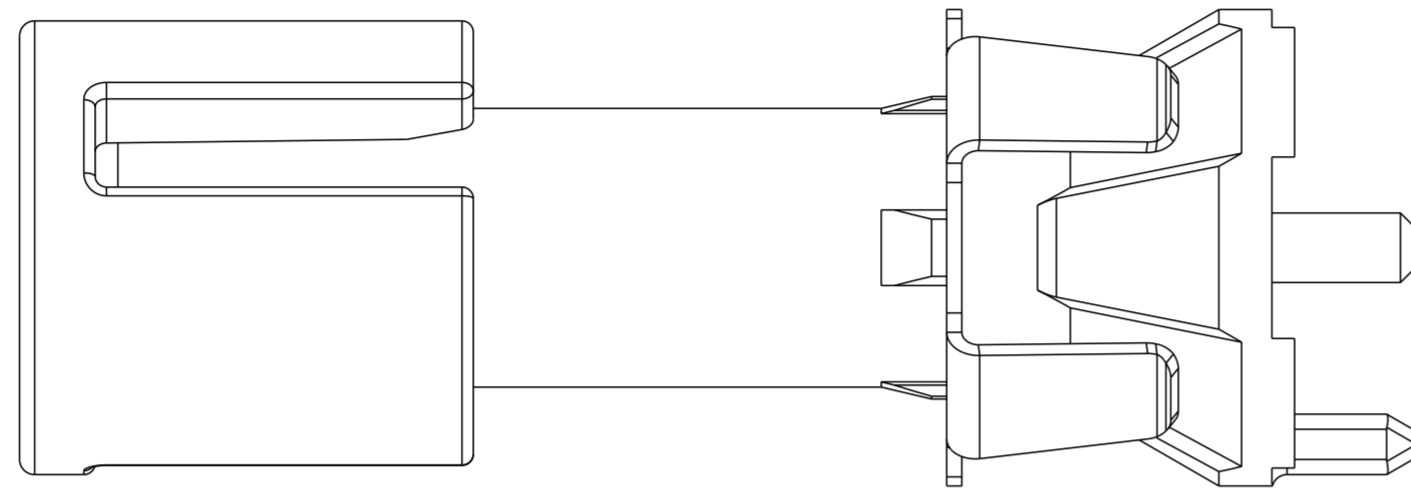
REV A1

RESTRICTED TO: -

THIS DRAWING IS UNPUBLISHED. RELEASED FOR PUBLICATION  
 © COPYRIGHT copyright.d8te- ALL RIGHTS RESERVED.


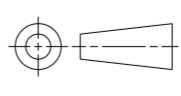
| REVISIONS |     |             |      |      |
|-----------|-----|-------------|------|------|
| P         | LTR | DESCRIPTION | DATE | APVD |
|           |     |             |      |      |

2278742-3 AS SHOW, UNDEFINED DIMENSIONS IS SAME AS 2278742-1



2278742-3

RECOMMENDED PCB LAYOUT FOR PN:2278742-3

|                                                                                                                                |   |                            |                                                                                                       |                        |
|--------------------------------------------------------------------------------------------------------------------------------|---|----------------------------|-------------------------------------------------------------------------------------------------------|------------------------|
| THIS DRAWING IS A CONTROLLED DOCUMENT.                                                                                         |   | DWN<br>F PAN<br>15SEP214   |  TE Connectivity |                        |
| DIMENSIONS:<br>mm                                                                                                              |   | CHK<br>F PAN<br>15SEP214   |                                                                                                       |                        |
|                                           |   | APVD<br>P WU<br>15SEP214   | NAME<br>FAKRA HEADER<br>0.92 CENTER PIN W/O NOSE<br>PIP                                               |                        |
| TOLERANCES UNLESS OTHERWISE SPECIFIED:<br>0 PLC ±<br>1 PLC ±0.5<br>2 PLC ±0.2<br>3 PLC ±0.1<br>4 PLC ±<br>ANGLES ±<br>FINISH ± |   | PRODUCT SPEC<br>108-101489 | SIZE<br>A2                                                                                            | CAGE CODE<br>C-2278742 |
| MATERIAL                                                                                                                       | 2 | WEIGHT<br>0.95g            | SCALE<br>10:1                                                                                         | RESTRICTED TO<br>-     |
| CUSTOMER DRAWING                                                                                                               |   | SHEET 2 OF 2               |                                                                                                       | REV A1                 |