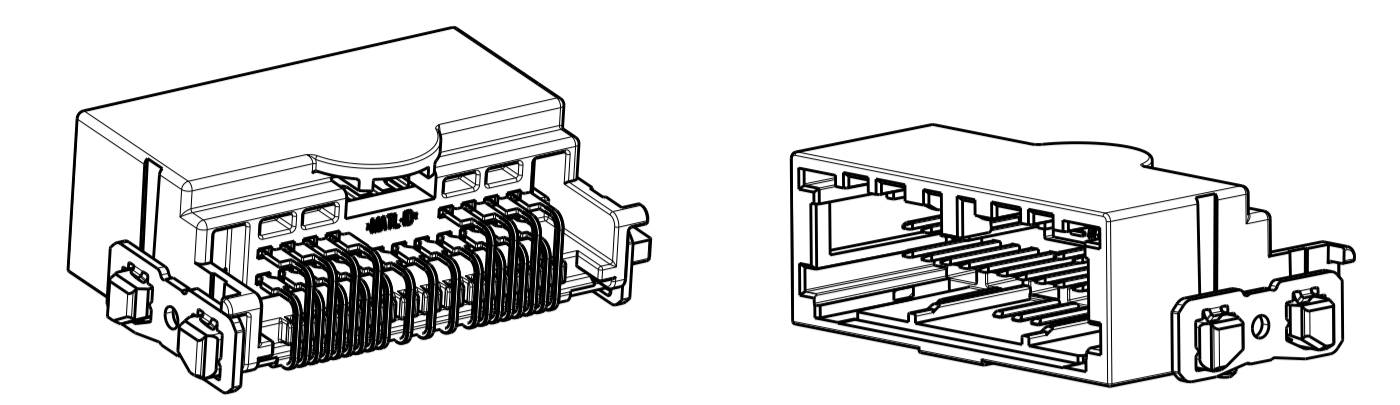


LOC	DIST	REV	DATE	BY	CHK	APPV
CG	00					

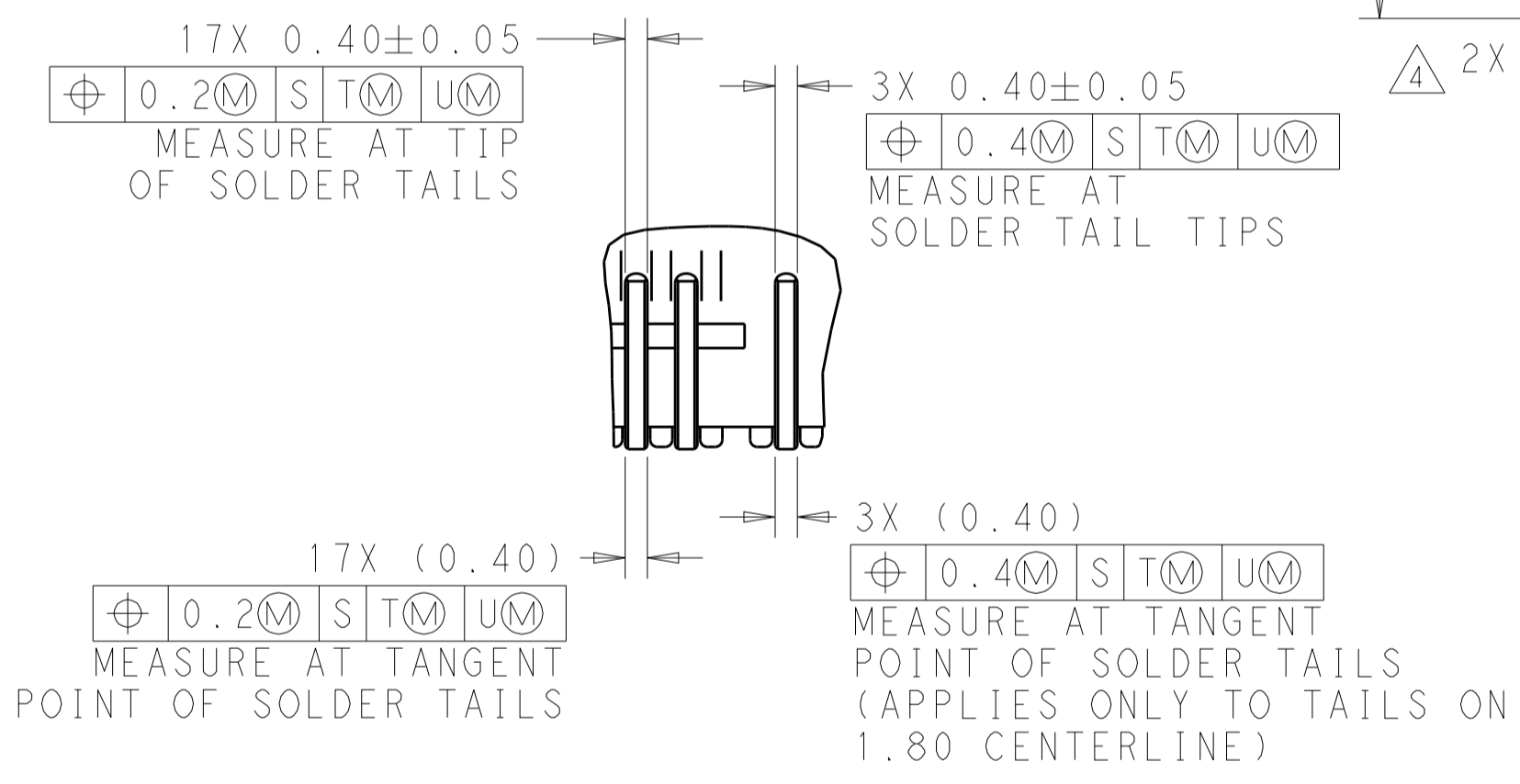
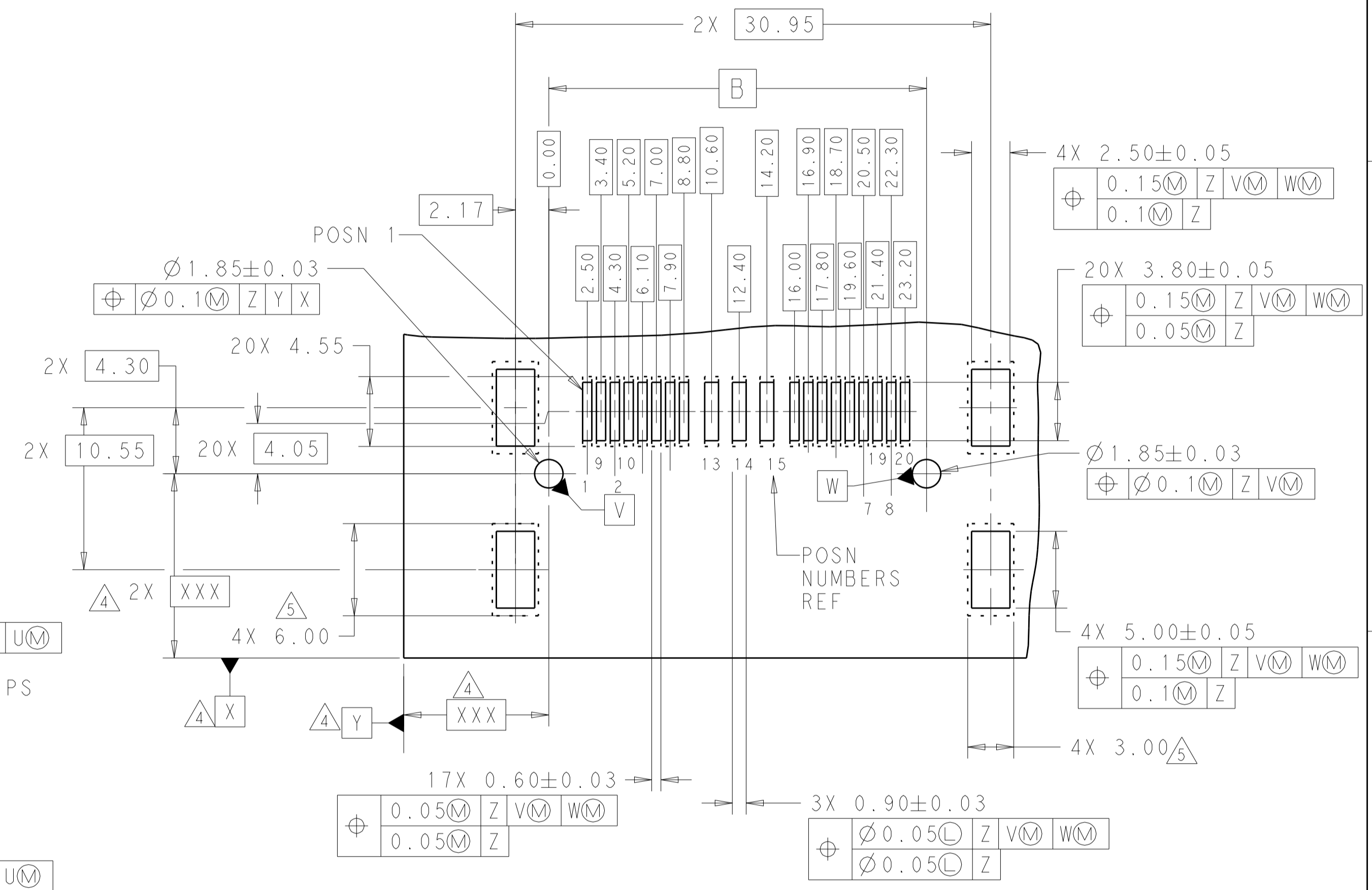
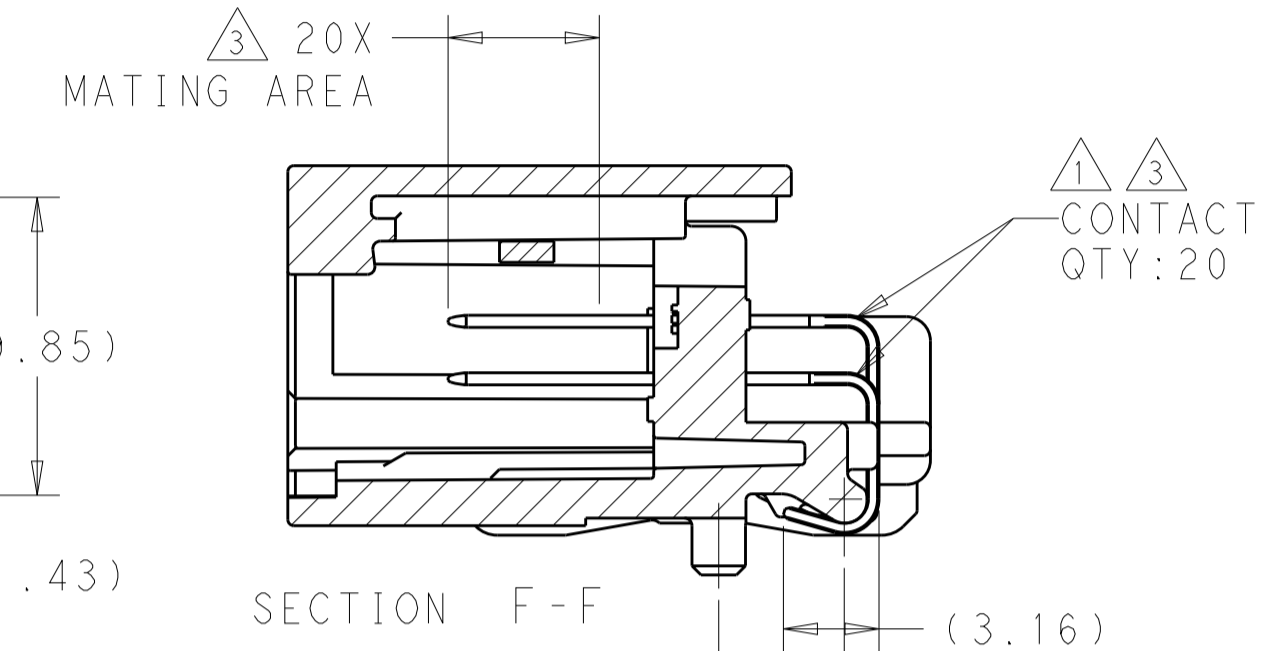
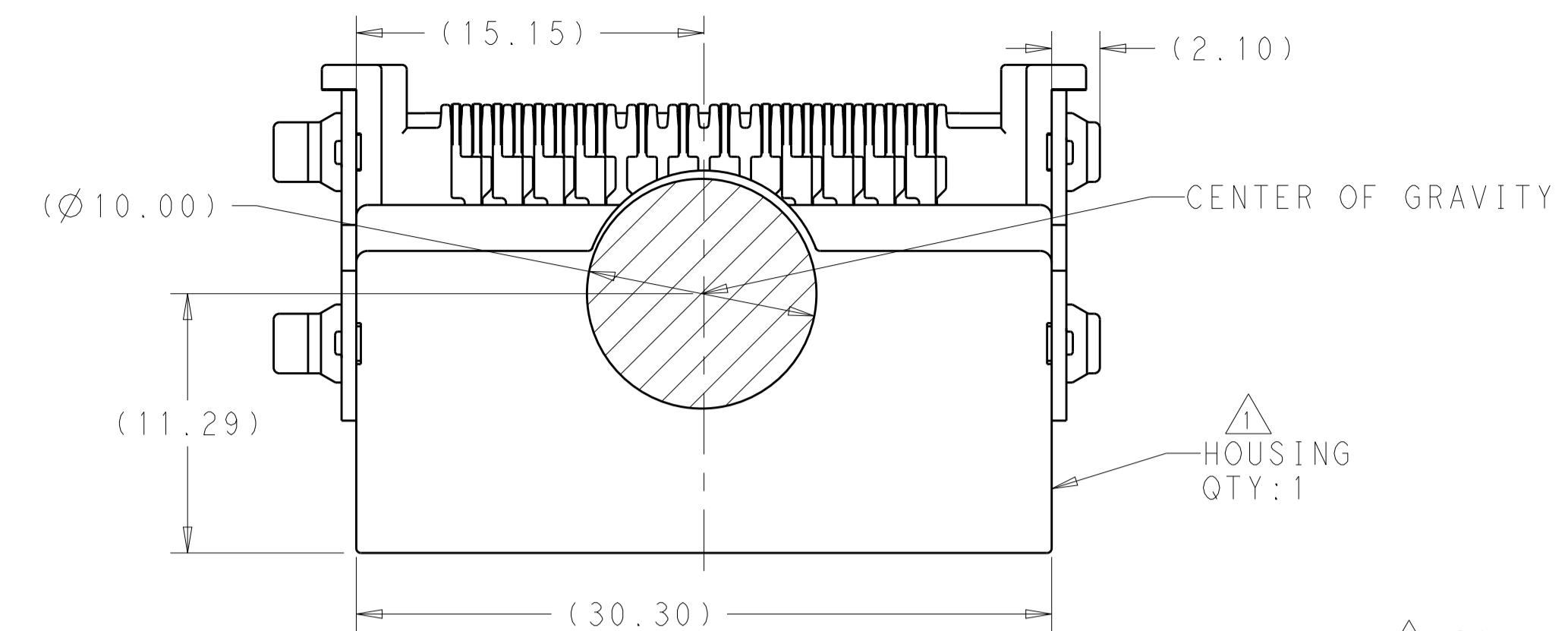
REVISIONS						
REV	DATE	BY	CHK	APPV	DESCRIPTION	DATE
D	14AUG2017	HM	DS		REV PER ECO-011497	14AUG2017
D1	25AUG2017	KP	DS		ECO-17-012573	25AUG2017
D2	29OCT2019	CJ	CJ		REV PER ECO-19-015720	29OCT2019

- 1 HOUSING: PCT. COLOR - BLACK
- 2 CONTACTS: BRASS
- 3 SOLDER CLIP: 3.8µm MIN TIN OVER 1.27µm MIN NICKEL
- 4 CONTACT: 0.8µm MIN TIN IN MATING AREA AND 3.0µm MIN TIN IN SOLDER TAIL ALL OVER 2.00µm MIN NICKEL
- 5 DATUMS AND BASIC DIMENSIONS ESTABLISHED BY THE CUSTOMER
- 6 ALLOW FOR OVER PRINTING ON PC BOARD
- 7. RECOMMENDED SOLDER PASTE THICKNESS 0.15mm.
- 8. MATES TO PLUG PN 2334713

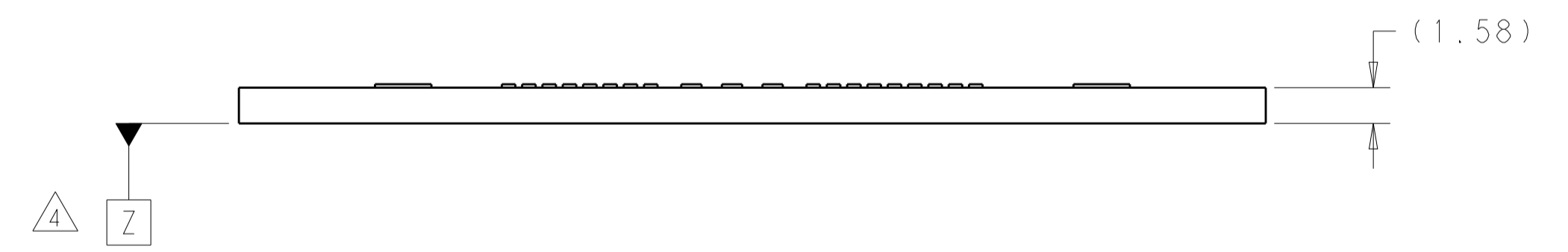


REF VIEW SCALE 2:1

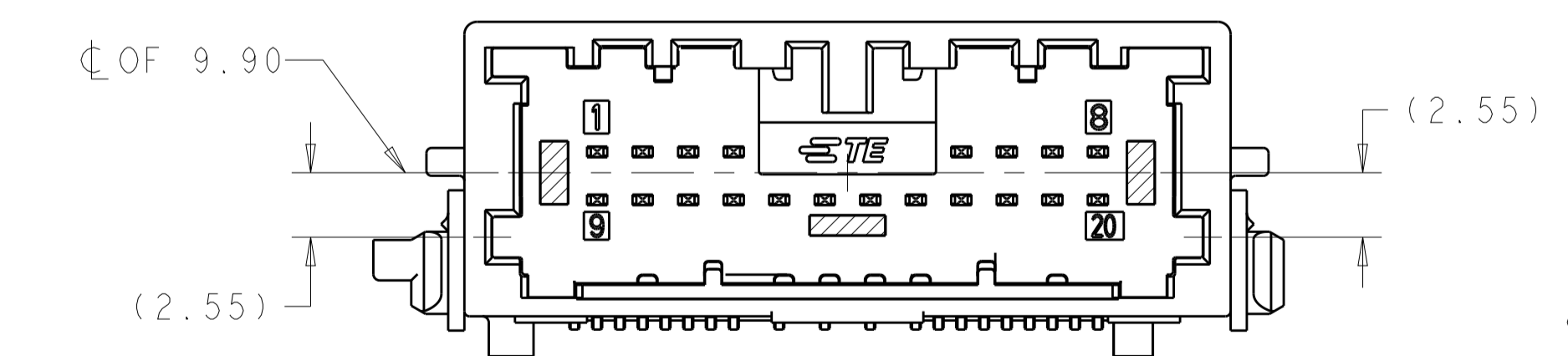
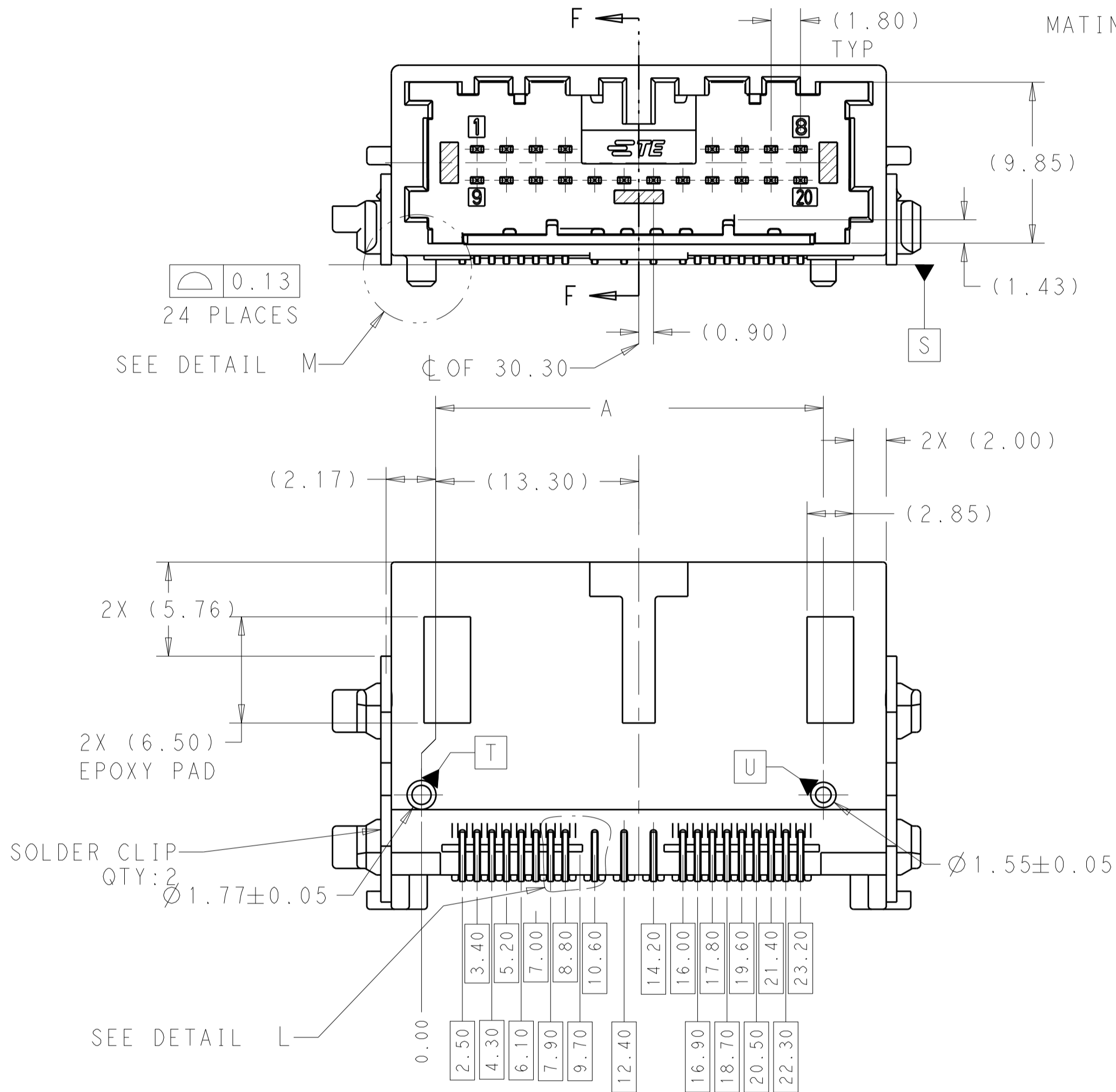
REF VIEW SCALE 2:1



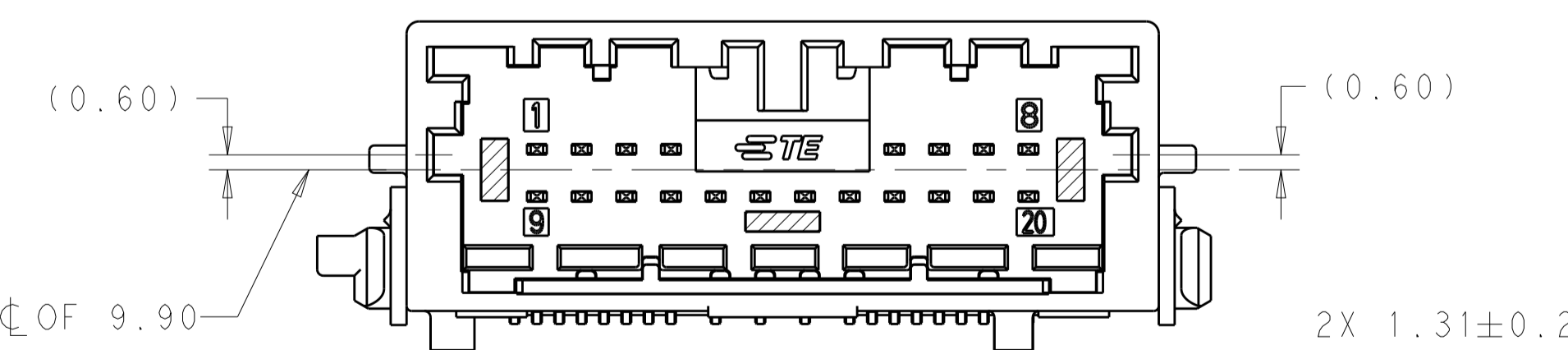
DETAIL L SCALE 8:1



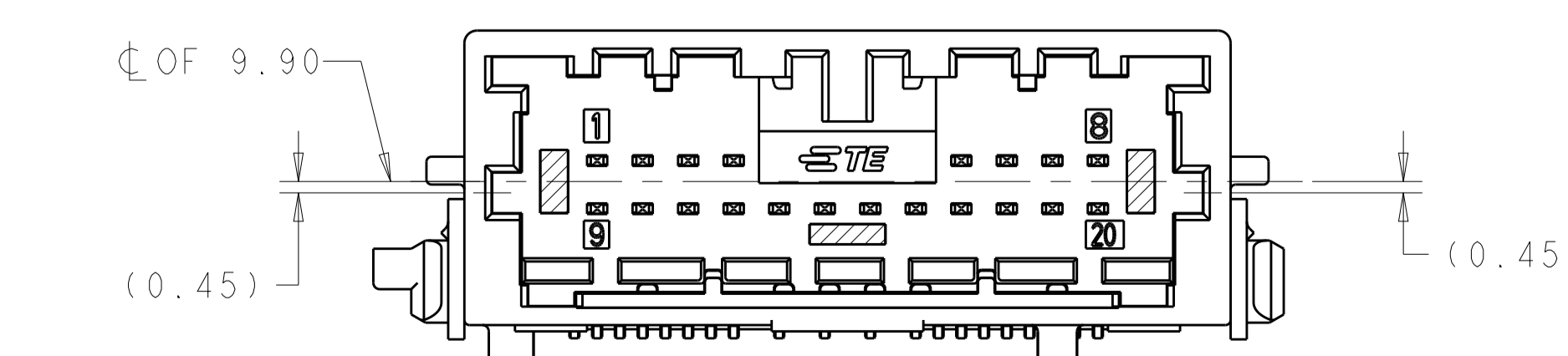
DETAIL M SCALE 8:1



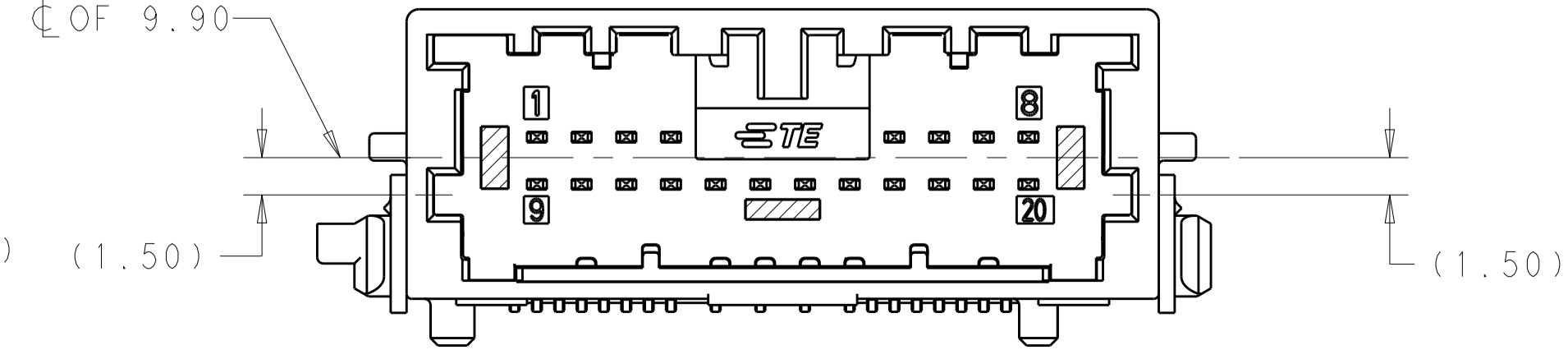
KEY CODE A SCALE 4:1



KEY CODE B SCALE 4:1



KEY CODE C SCALE 4:1



KEY CODE D SCALE 4:1

RECOMMENDED PC BOARD LAYOUT CONNECTOR SIDE OF BOARD SCALE 4:1

B	A	KEY CODE	PART NUMBER
23.60	23.60	KEY CODE D	2272897-4
21.60	21.60	KEY CODE C	2272897-3
22.60	22.60	KEY CODE B	2272897-2
24.60	24.60	KEY CODE A	2272897-1

THIS DRAWING IS A CONTROLLED DOCUMENT.

DIMENSIONS: mm

TOLERANCES UNLESS OTHERWISE SPECIFIED:

0 PLC	±
1 PLC	±
2 PLC	±
3 PLC	±
4 PLC	±

MATERIAL: PCT

FINISH: 3.8µm MIN TIN OVER 1.27µm MIN NICKEL

CONTACT: 0.8µm MIN TIN IN MATING AREA AND 3.0µm MIN TIN IN SOLDER TAIL ALL OVER 2.00µm MIN NICKEL

DATE: 17JUL2014

CHK: MOLL

D: FRY

APPV: FRY

DATE: 12DEC2014

PRODUCT SPEC

APPLICATION SPEC

WEIGHT

CUSTOMER DRAWING

NAME: HEADER ASSEMBLY, 20 POSN, 2 ROW, SMT, 1.80 CENTERLINE UNSEALED, GENERATION 50

SIZE: A1

CAGE CODE: C=2272897

RESTRICTED TO

SCALE: 4:1

SHEET: 1 OF 1

REV: D2