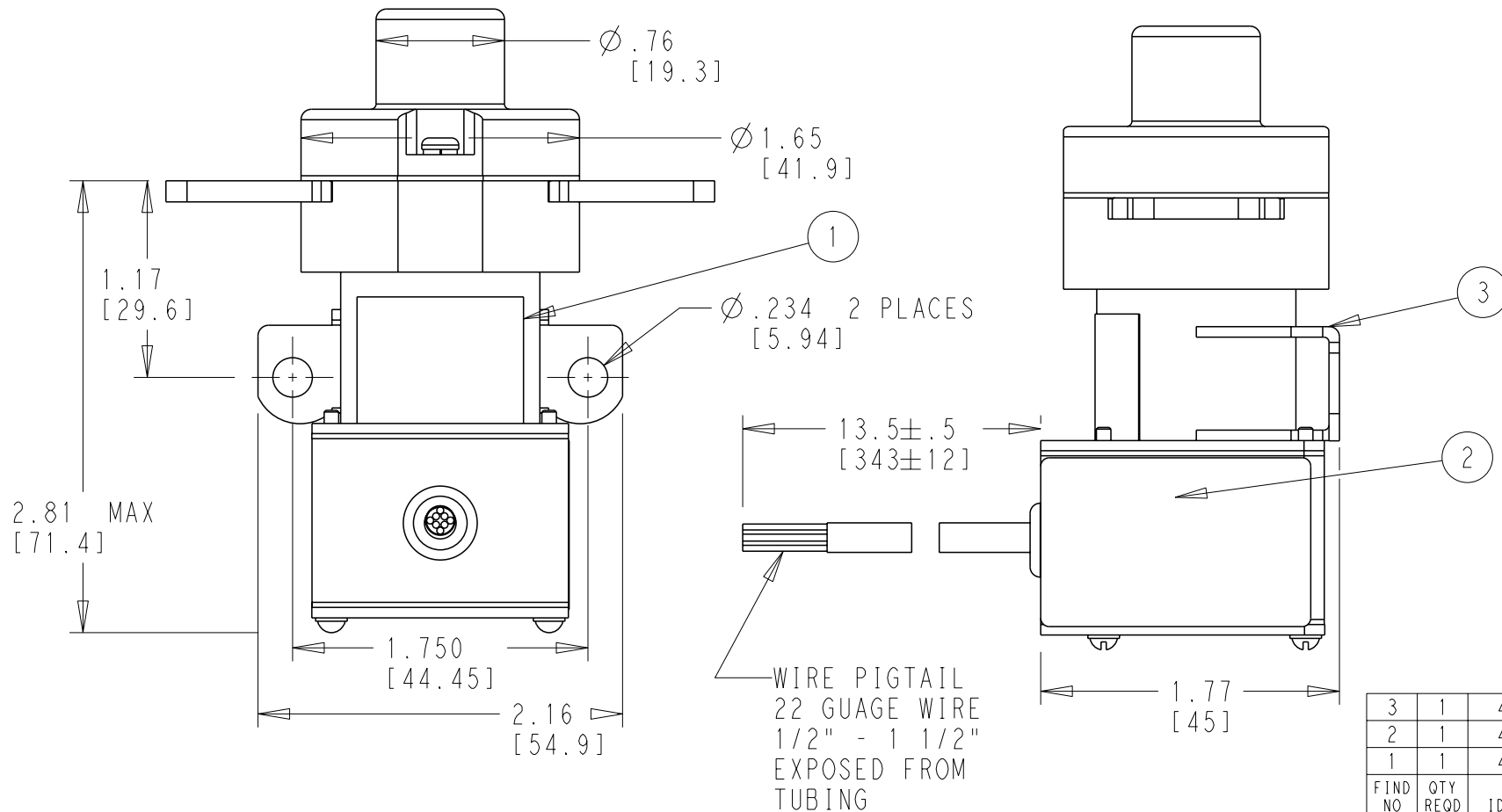
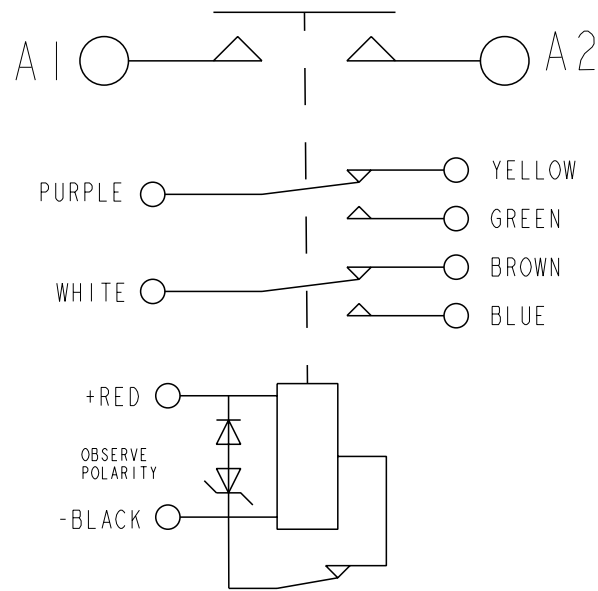
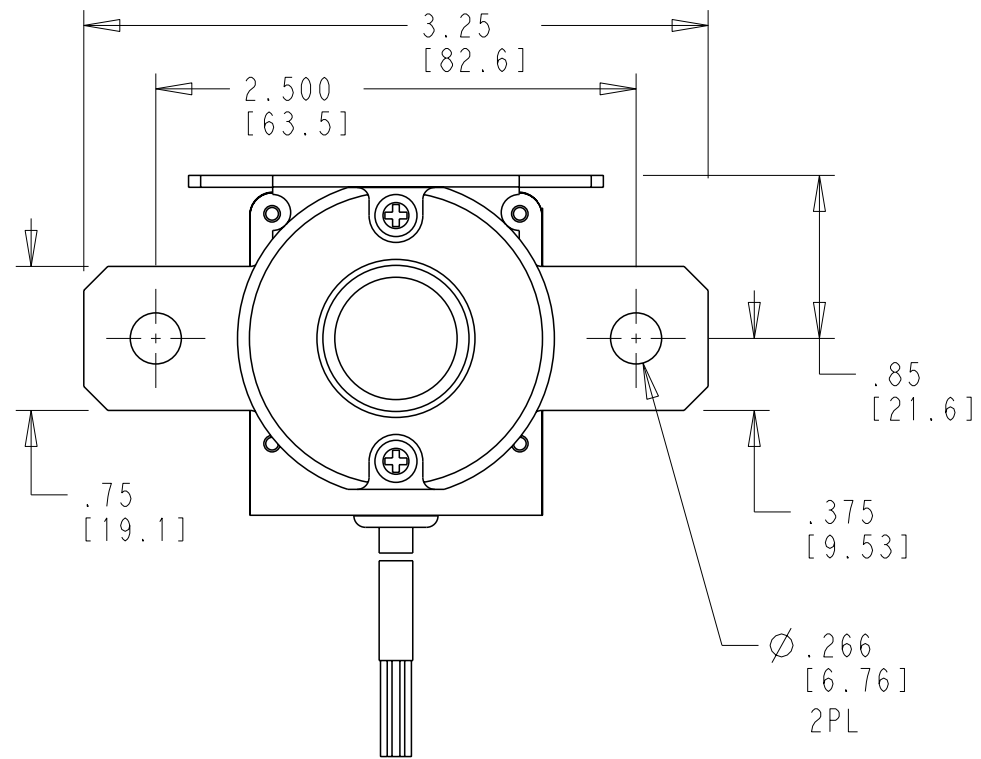


DWG NO 2252005-7
 THIS DRAWING IS A CONTROLLED DOCUMENT



CONSTRUCTION	GASKET SEALED
MAIN CONTACTS CONFIGURATION	SPST N.O. (DOUBLE BREAK)
VOLTAGE	28 VDC
CURRENT RESISTIVE	400 AMPS
MOTOR LOAD	1875 AMPS FOR 0 TO 5 SEC. 1700 AMPS FOR 5 TO 10 SEC. 1500 AMPS FOR 10 TO 15 SEC. 1200 AMPS FOR 15 TO 20 SEC. 1000 AMPS FOR 20 TO 25 SEC. 750 AMPS FOR 25 TO 30 SEC. 500 AMPS FOR 30 TO 90 SEC. THE ABOVE MOTOR CURRENTS REPRESENT A MOTORSTART CURVE FROM 0-90 SEC.
OVERLOAD	450 AMPS FOR 5 MINUTES. 1000 AMPS FOR 10 SEC. 2000 AMPS FOR 200 Ms.
RUPTURE	4000 AMPS
COIL DATA	
DUTY CYCLE	CONTINUOUS (ECONOMIZED)
MAX. OPERATE VOLTAGE	32 VDC
NOM. OPERATE VOLTAGE	28 VDC
PICKUP VOLTAGE	18 VDC MAX
DROPOUT VOLTAGE	1-7 VDC
PICKUP TIME	35 mS.
DROPOUT TIME	20 mS.
COIL CURRENT	
INRUSH	5.5 AMPS MAX AT 28 VDC & 25°C
HOLD	400 mA MAX AT 28 VDC & 25°C
SUPPRESSION	±42 VDC
AUXILIARY CONTACTS CONFIGURATION	2 SPDT
VOLTAGE	28 VDC
CURRENT RESISTIVE	5 AMPS
INDUCTIVE	2 AMPS
LAMP	1 AMP
LOW LEVEL	1 mA AT 28 VDC
ENVIRONMENTAL DATA	
TEMPERATURE	-55°C TO +85°C
ALTITUDE	51,000 FT [15,545M]
LIFE ELECTRICAL	50,000 CYCLES MIN.
LIFE MECHANICAL	100,000 CYCLES MIN.
MAX. WEIGHT	.77 LBS(350g)
NOTES	1. AUXILIARY CONTACTS ARE GOLD PLATED. 2. 1 MILLIAMPERE RATING DOES NOT APPLY IF CONTACTS HAVE SWITCHED LOADS ABOVE 1 MILLIAMPERE.

3	1	47619-320	PRIMARY ASSEMBLY	1-2252005-5		
2	1	44900-036	SCHEMATIC DIAGRAM	2-2252005-2		
1	1	44899-061	NAME PLATE	2252005-9		
FIND NO	QTY REQD	PART OR IDENTIFYING NO	NOMENCLATURE OR DESCRIPTION	FSCM NO	TE PART NO	MATERIAL OR NOTE

C	ECO-19-007176	08MAY2019	RV	AH
B	ECO-19-003374	04MAR2019	RV	AH
A	ECO-19-002563	08OCT2018	RAJ	-
LTR	REVISION RECORD	DATE	DWN	APVD

CAGE CODE: 74063

Hartman Division 175 N. DIAMOND STREET MANSFIELD, OHIO 44902

DIMENSIONS: INCH [mm]

TOLERANCES UNLESS OTHERWISE SPECIFIED:

0 PLC	± -
1 PLC	±
2 PLC	± 0.06
3 PLC	± 0.01
4 PLC	±

ANGLES ± -

SURFACE TEXTURE

DWN RAJ 26JUN2018

CHK -

APVD -

NAME CONTACTOR - SPST N.O. DB 400 AMP, 28 VDC K4001A3C1

SCALE NONE SIZE A3 DRAWING NO 2252005-7 SHEET 1 OF 1 REV C

MATERIAL - HEAT TREAT -

STE TE Connectivity

THIS INFORMATION IS CONFIDENTIAL AND PROPRIETARY TO TE CONNECTIVITY LTD. AND ITS WORLDWIDE SUBSIDIARIES AND AFFILIATES (TE). IT MAY NOT BE DISCLOSED TO ANYONE, OTHER THAN TE PERSONNEL, WITHOUT AUTHORIZATION FROM TE (www.te.com).