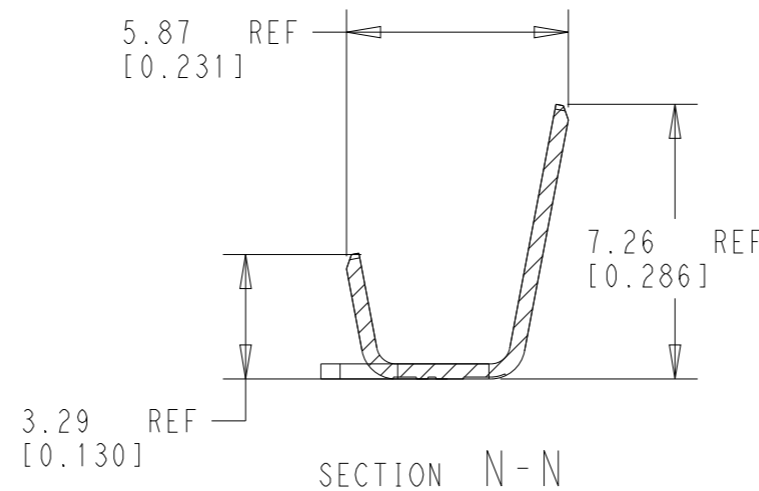
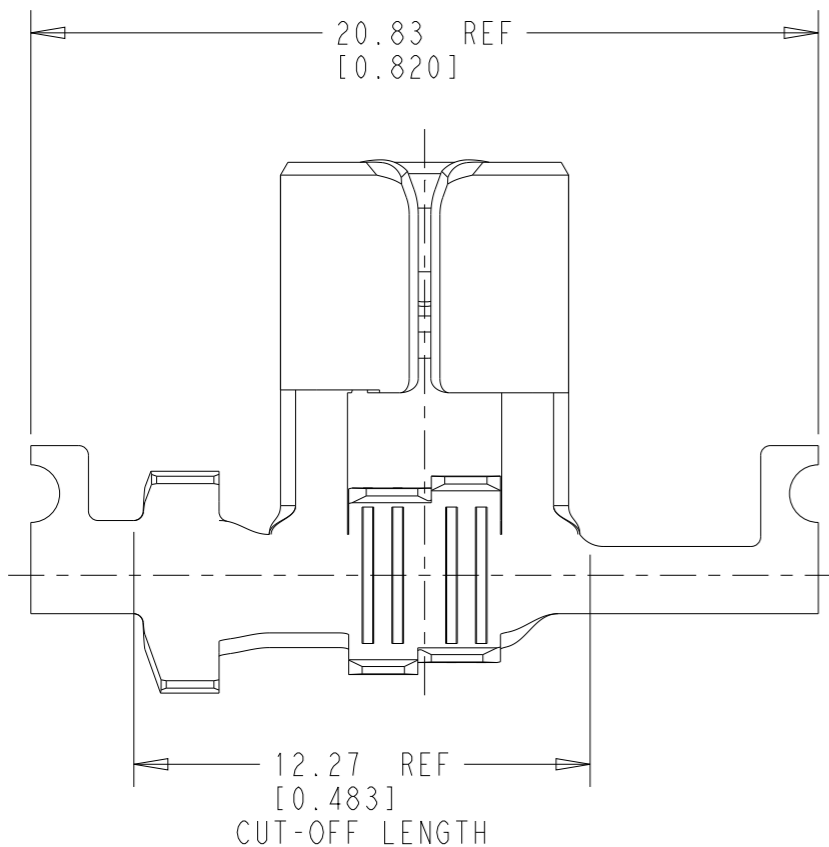
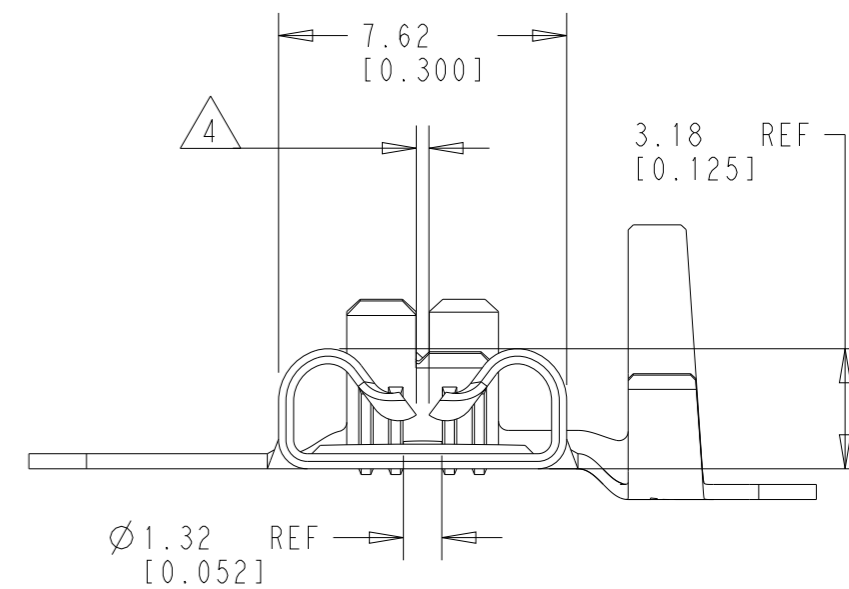
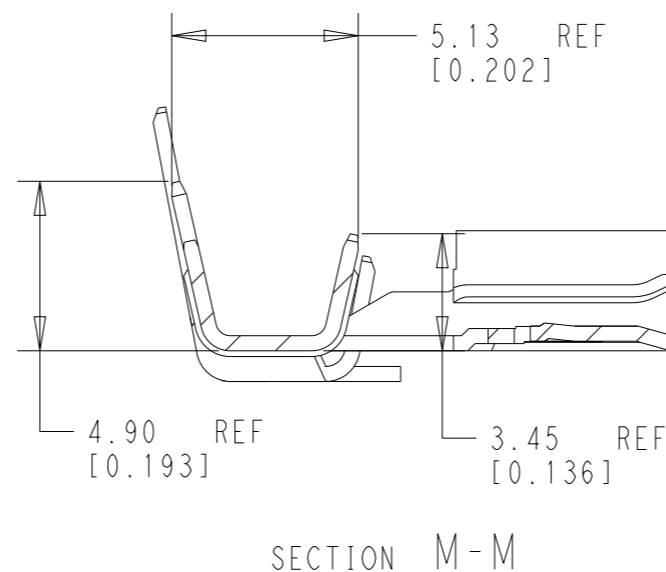
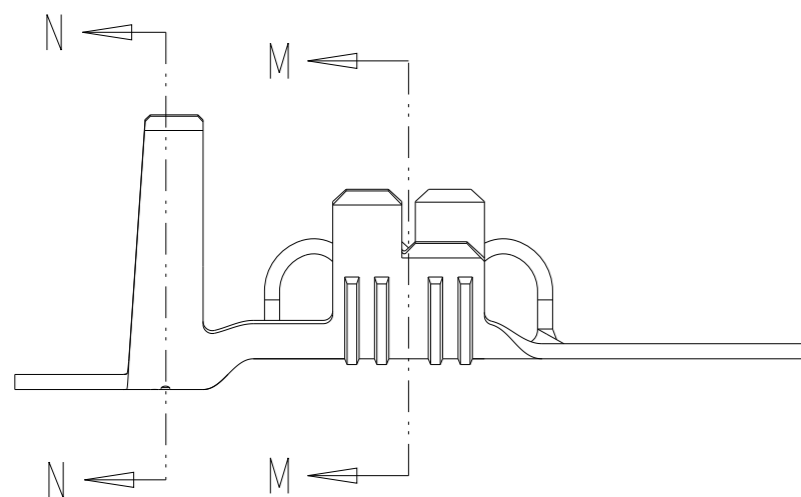




P	LTR	DESCRIPTION	DATE	DWN	APVD
	A1	REDRAWN/REVISED PER ECN-24-261239	16APR2024	BKW	DH



- CONTINUOUS STRIP ON REELS
- WIRE RANGE: 22-12 AWG
INSULATION RANGE: 1.88-4.32
- MATING TAB THICKNESS IS 0.81 ± 0.025 [$0.032 \pm .001$]
- CONTACT ROLLS TO NOT TOUCH ONE ANOTHER



PRE-TIN	BRASS	2238209-3
FINISH	MATERIAL	PART NUMBER

THIS DRAWING IS A CONTROLLED DOCUMENT.		DWN B. WEAVER 05FEB2023	 TE Connectivity NAME FASTON .250 STD, REC. L.H. FLAG 2D, 22-12 AWG TPBR	
DIMENSIONS: mm [IN]		CHK D. HUMPHREY 05FEB2023		
 TOLERANCES UNLESS OTHERWISE SPECIFIED: 0 PLC ±- 1 PLC ±- 2 PLC ±0.25 [.010] 3 PLC ±- 4 PLC ±- ANGLES ±-		APVD W. MOYER 05FEB2023		
MATERIAL SEE TABLE		FINISH SEE TABLE		
		PRODUCT SPEC -	SIZE A3	
		APPLICATION SPEC -	CAGE CODE 00779	
		WEIGHT -	DRAWING NO C-2238209	
		CUSTOMER DRAWING	RESTRICTED TO -	
		SCALE 5:1	SHEET 1 OF 1	
			REV A1	