

4

3

2

1

THIS DRAWING IS UNPUBLISHED.

RELEASED FOR PUBLICATION

20

© COPYRIGHT 20

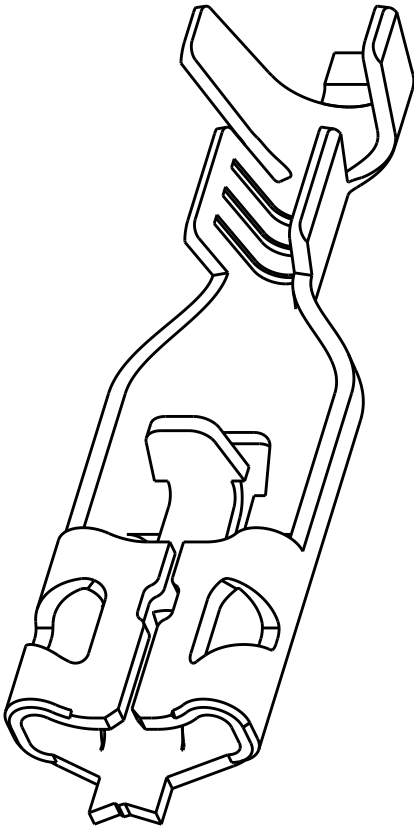
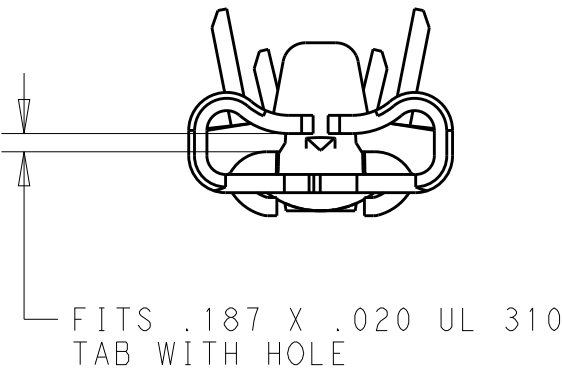
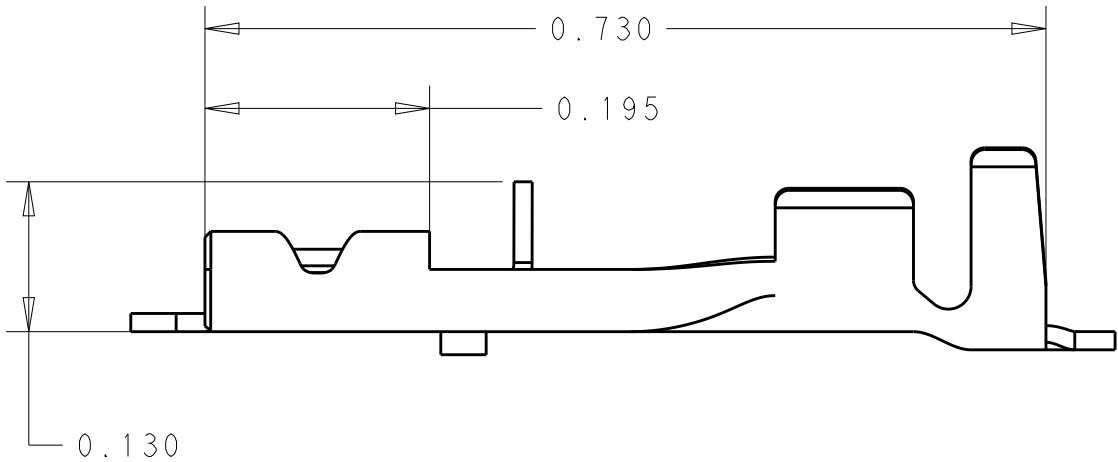
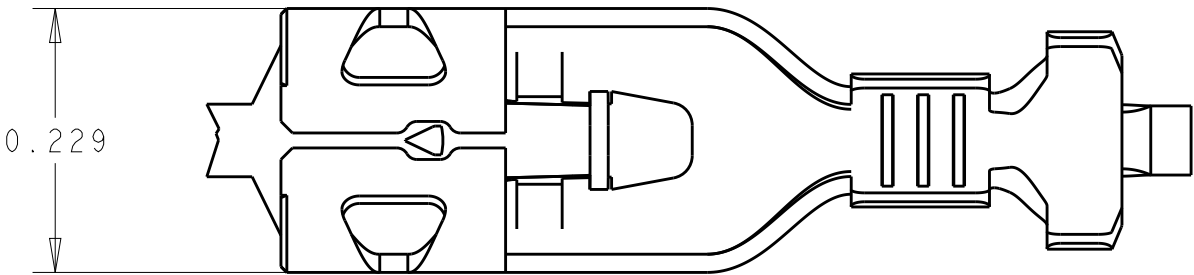
BY -

ALL RIGHTS RESERVED.

REVISIONS

P	LTR	DESCRIPTION	DATE	DWN	APVD
	A	RELEASED PER ECR-18-007868	22MAY2018	MD	TD

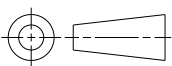
1. THIS PRODUCT HAS NOT COMPLETED QUALIFICATION TESTING.



THIS DRAWING IS A CONTROLLED DOCUMENT.

DIMENSIONS:

IN



TOLERANCES UNLESS OTHERWISE SPECIFIED:

0 PLC ±  
1 PLC ±  
2 PLC ±  
3 PLC ±.015  
4 PLC ±  
ANGLES ±

MATERIAL

STEEL

FINISH

NI

DWN M.DIDONATO 22MAY2018

CHK M.DIDONATO 22MAY2018

APVD T.DING 22MAY2018

PRODUCT SPEC

108-143022

APPLICATION SPEC

114-2074

WEIGHT

-

CUSTOMER DRAWING

.065 - .130

INSULATION RANGE

20-16 AWG

WIRE SIZE

2238178-1

PART NUMBER



TE Connectivity

NAME

187X020 SERIES  
POSITIVE LOCK MARK II RECEP.

-

SIZE

A3

CAGE CODE

-

DRAWING NO

©-2238178

RESTRICTED TO

-

SCALE 3:1

SHEET 1 OF 1

REV A1