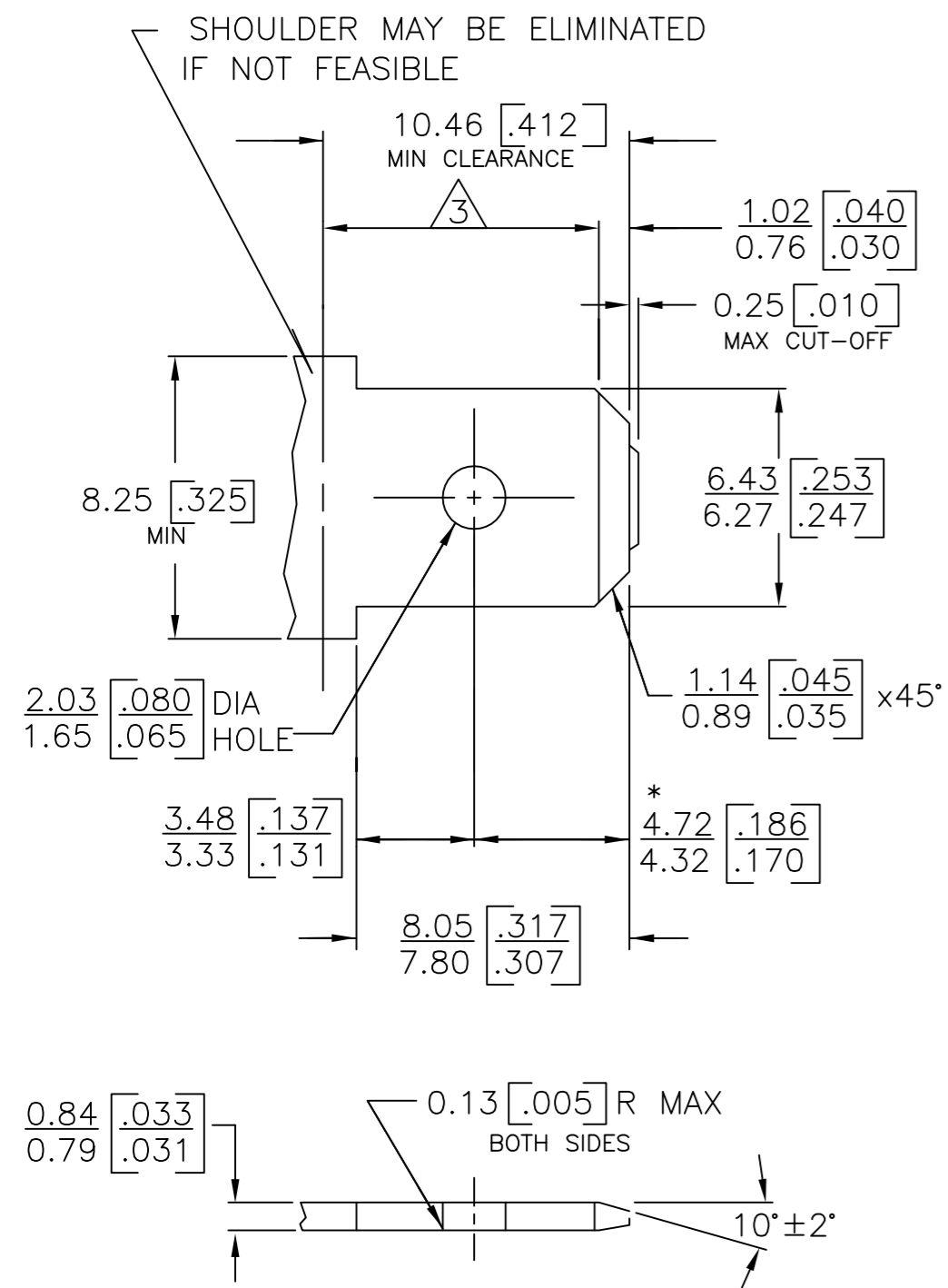
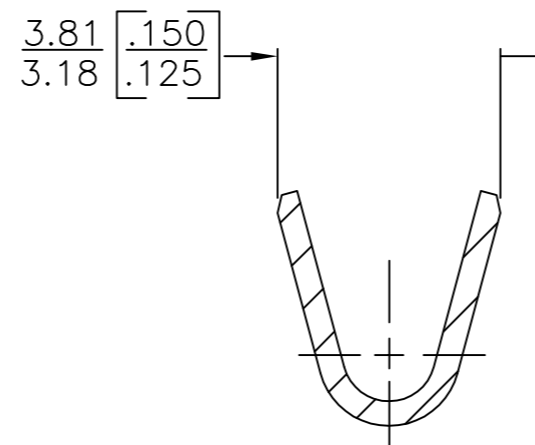
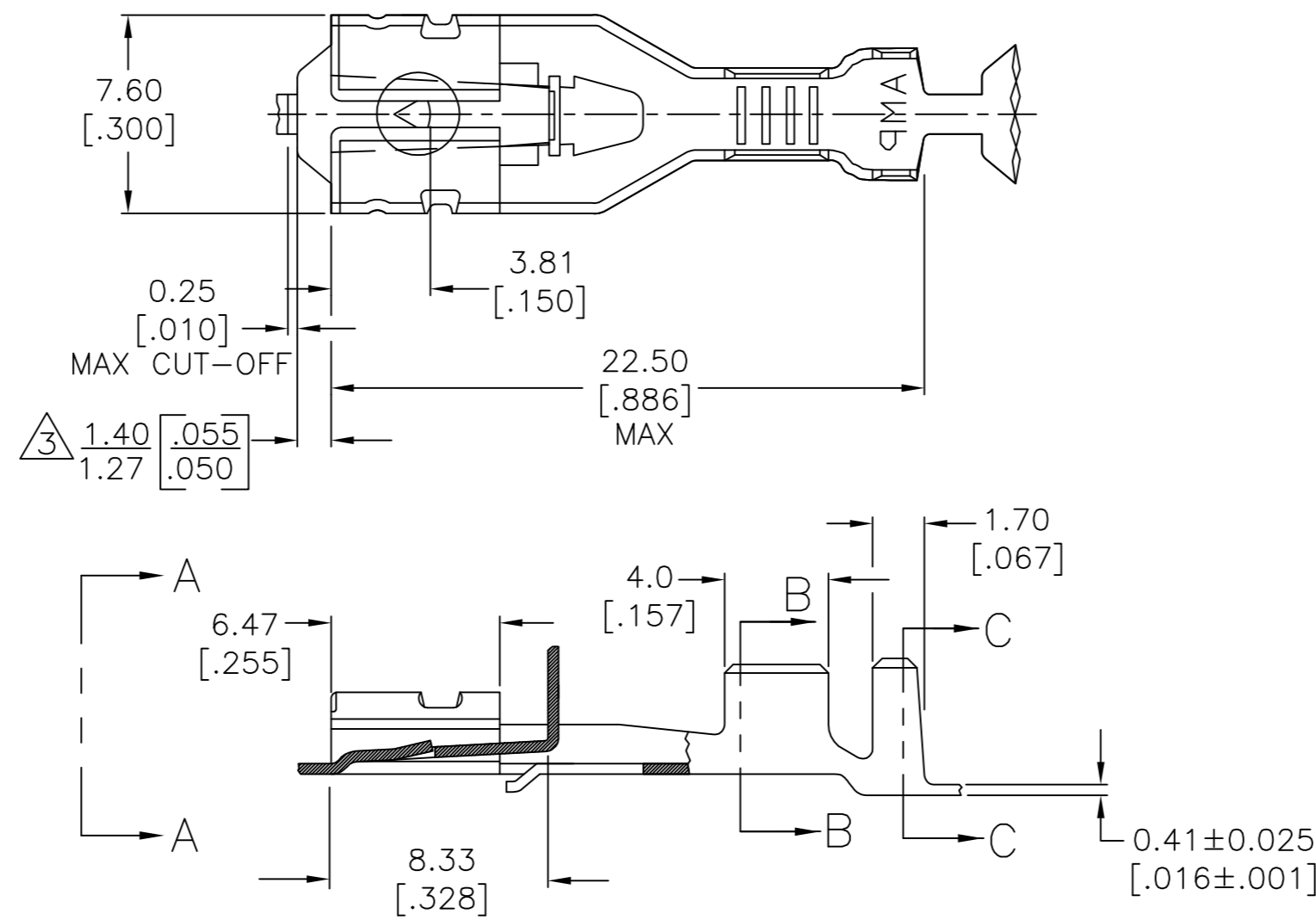


REVISIONS					
P	LTR	DESCRIPTION	DATE	DWN	APVD
A2		REVISED PER ECR-17-014411	03OCT2017	BDA	MD

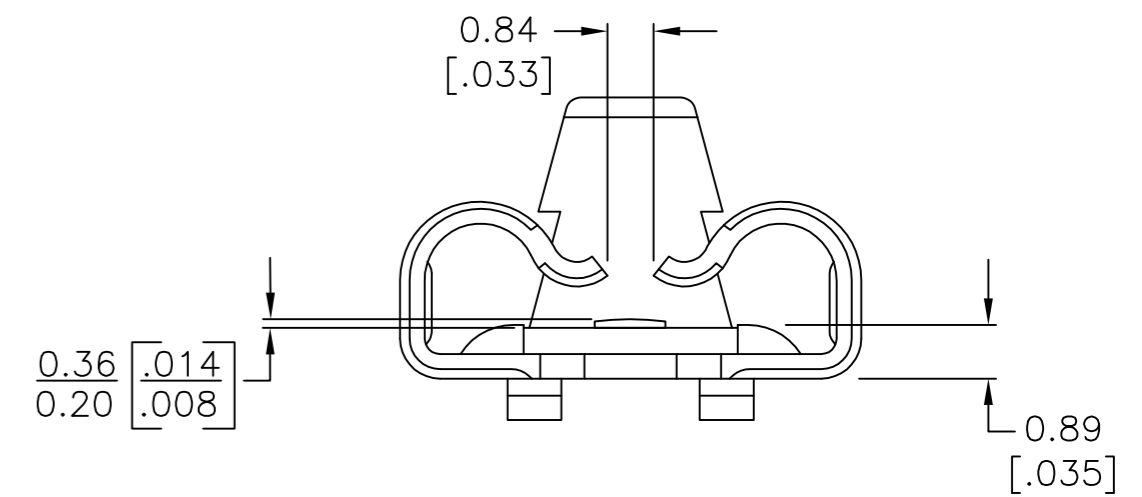
# SUGGESTED MATING TAB



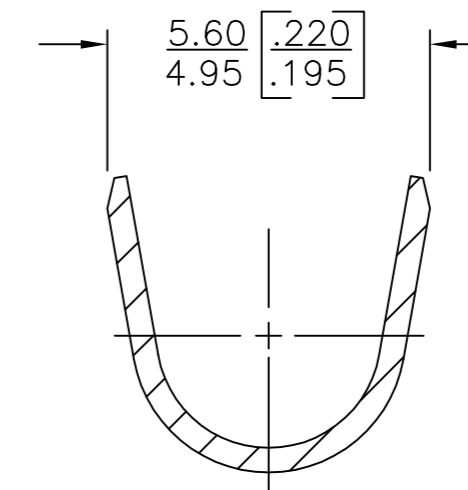
- MATL: 1/2 H BRASS OR NICKEL PL STEEL.
  - NO BURRS PERMISSIBLE AT HOLE.
  - MUST BE FLAT WITHIN 0.076 [.003] OVER THIS LENGTH.
  - TIN PLATING IS REQUIRED ON BRASS WHEN TERMINAL TEMP. IS OVER 225°F
  - HOLE MUST BE SYMMETRICAL ABOUT TAB  $\phi$  WITHIN 0.076 [.003]
- \* TO BE USED ONLY WHEN SHOULDER IS ELIMINATED.



SECTION B-B



VIEW A-A



SECTION C-C

UNPLATED	2.29-3.94 [.090-.155] DIA	[#18-#14] AWG	2238155-2
TIN PLATED	2.29-3.94 [.090-.155] DIA	[#18-#14] AWG	2238155-1
FINISH	INSULATION RANGE	WIRE SIZE	PART NO.

THIS DRAWING IS A CONTROLLED DOCUMENT.

DWN: BASVESH WARAD 07OCT2016  
CHK: SMITH, RODNEY 07OCT2016  
APVD: SMITH, RODNEY 07OCT2016

**TE** TE Connectivity

RECEPTACLE, POSITIVE LOCK, .250 SERIES

114-2074

MATERIAL: BRASS

WEIGHT: A2 00779

CAGE CODE: C=2238155

SCALE: 5:1

SHEET: 1 of 1

REV: A2