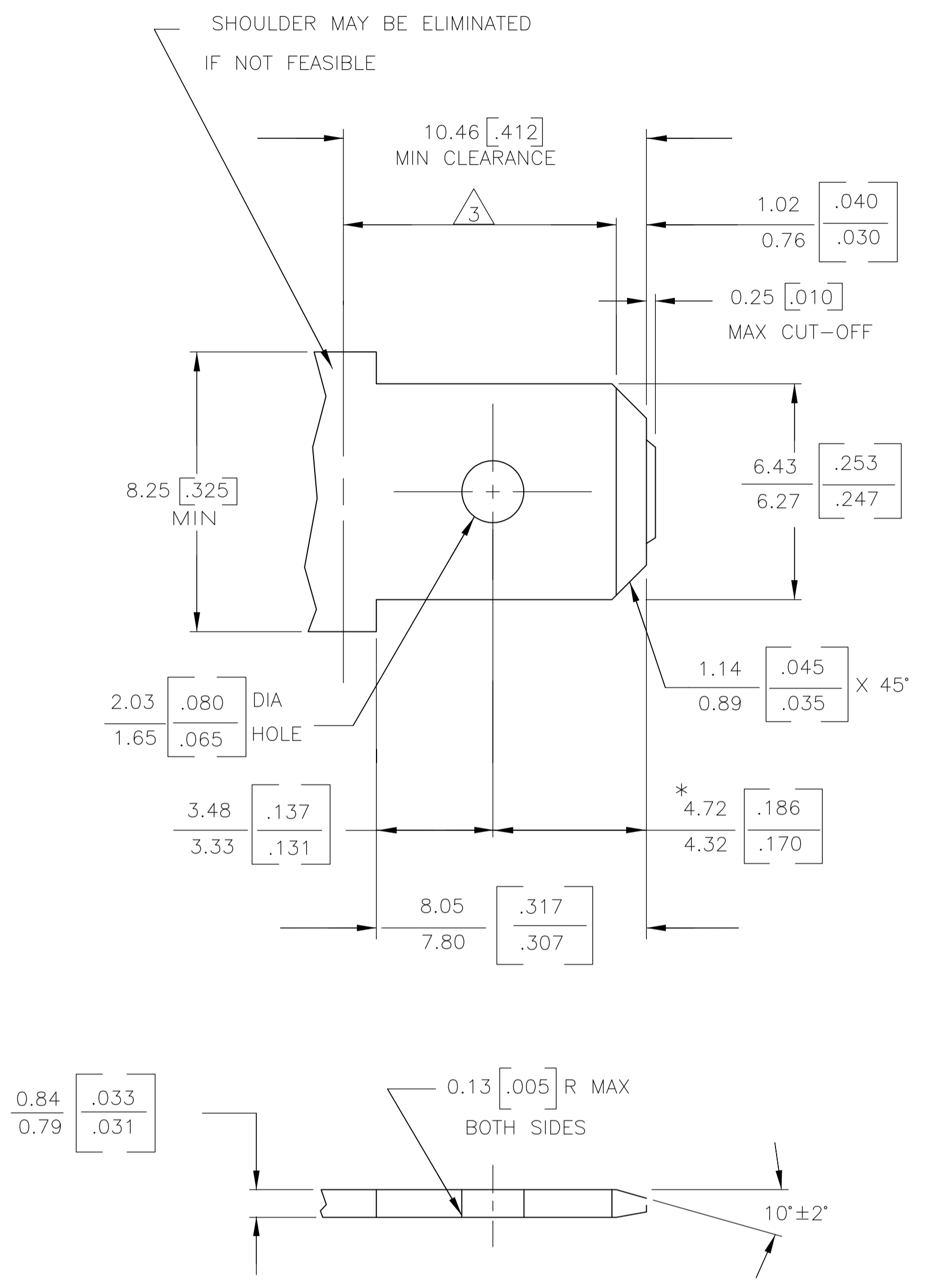
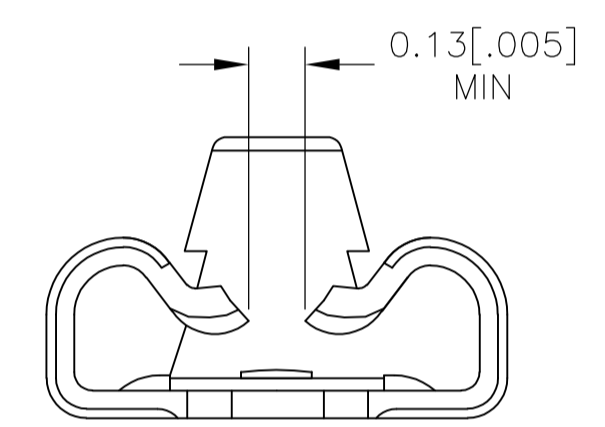
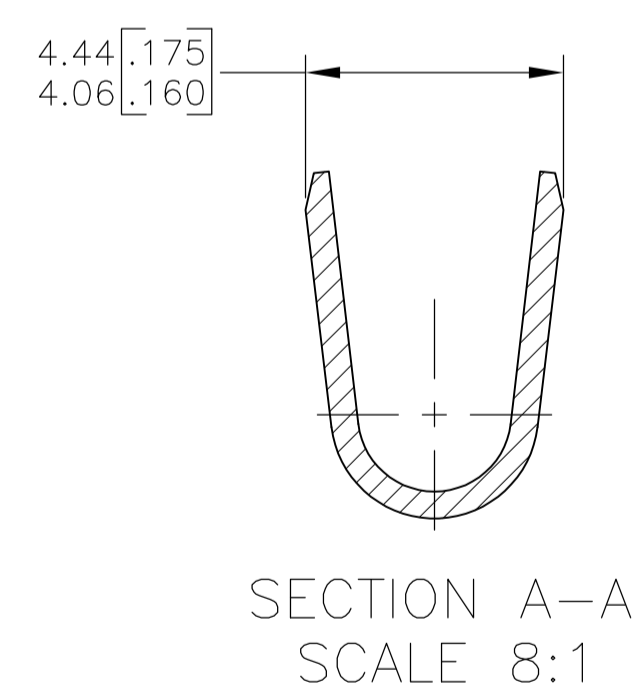
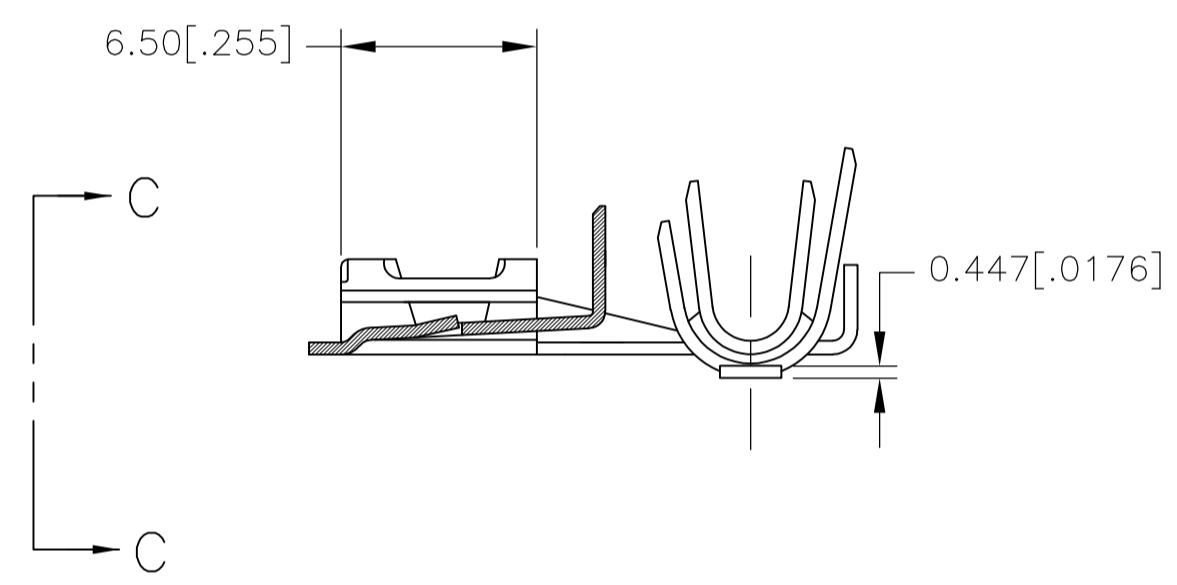
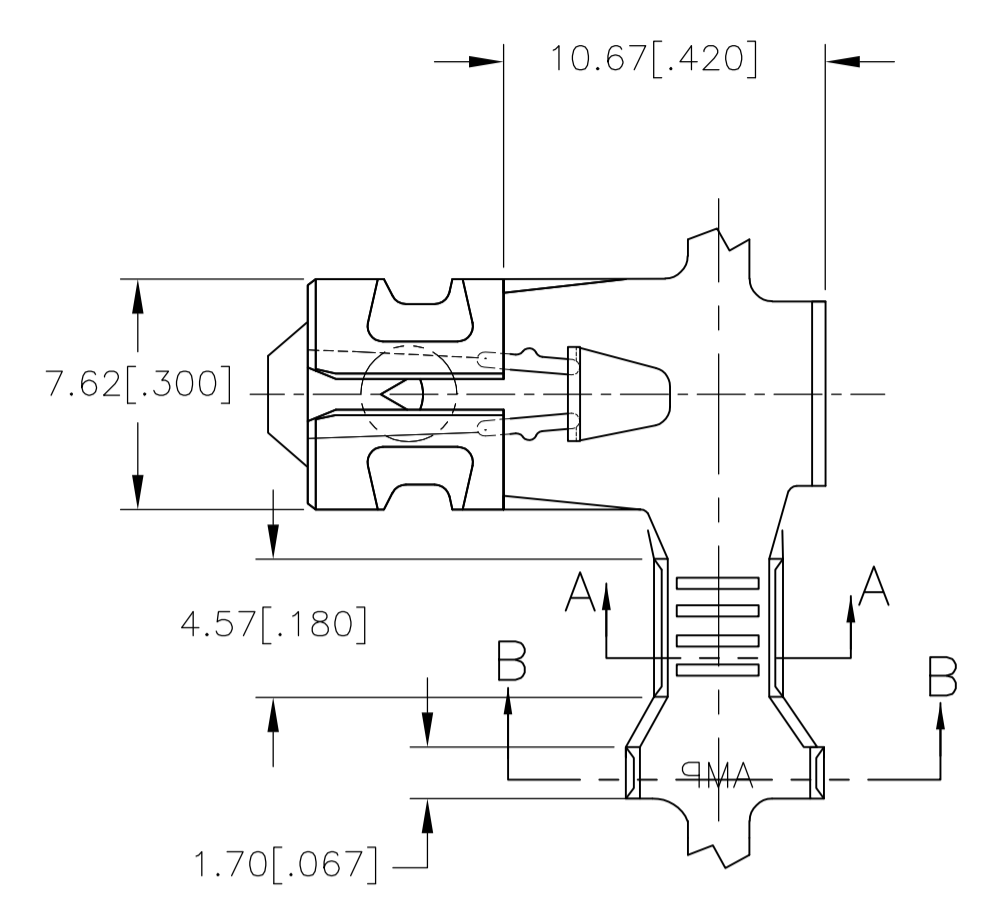


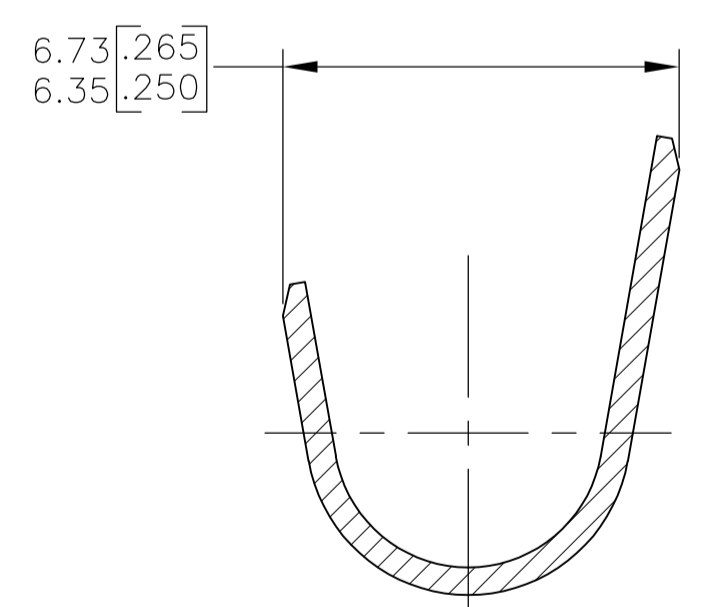
# SUGGESTED MATING TAB



- MATL: 1/2 H BRASS OR NICKEL PL STEEL.
  - NO BURRS PERMISSIBLE AT HOLE.
  - MUST BE FLAT WITHIN 0.076 [.003] OVER THIS LENGTH.
  - TIN PLATING IS REQUIRED ON BRASS WHEN TERMINAL TEMP. IS OVER 225°F
  - HOLE MUST BE SYMMETRICAL ABOUT TAB Q WITHIN 0.076 [.003]
- \* TO BE USED ONLY WHEN SHOULDER IS ELIMINATED.



VIEW C-C  
SCALE 8:1



SECTION B-B  
SCALE 8:1

- DIMENSIONS IN BRACKETS ARE IN INCHES.
- PRODUCT PROVIDED IN STRIP FORM, BREAKS MAY BE PRESENT.
- FIRST ARTICLE APPROVAL REQUIRED
- THIS PART HAS NOT COMPLETED QUALIFICATION TESTING

REVISIONS				
REV	DATE	DESCRIPTION	BY	APP'D
A	07MAR2017	REVISED PER ECR-17-002946	BW	MD

3.81-5.08 [.150-.200] DIA	#12-#10 AWG	2238106-1
INSULATION RANGE	WIRE SIZE	PART NUMBER

THIS DRAWING IS A CONTROLLED DOCUMENT.		DIN: BASVESH WARAD 04MAY2016		STE TE Connectivity	
DIMENSIONS: mm[INCHES]		CHK: MIKE DIDONATO 04MAY2016		NAME: RECEPTACLE, FLAG, POSITIVE-LOCK, .250 SERIES	
TOLERANCES UNLESS OTHERWISE SPECIFIED:		AP'D: MIKE DIDONATO 04MAY2016		PRODUCT SPEC: -	
0 PLC ± -		APPLICATION SPEC: -		SIZE: A1	
1 PLC ± -		WEIGHT: -		CAGE CODE: 00779	
2 PLC ± -		CUSTOMER DRAWING		DRAWING NO: 2238106	
3 PLC ± 0.25[.010]		SCALE: 4:1		SHEET 1 OF 1	
4 PLC ± -		REV: A		REV: A	
ANGLES ± ± -					