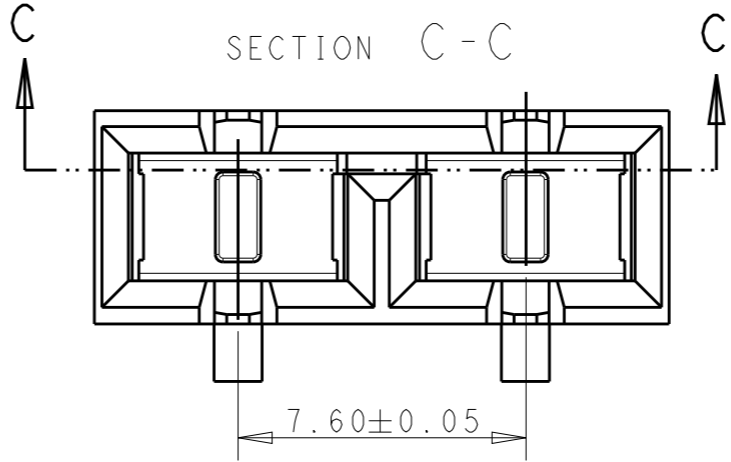
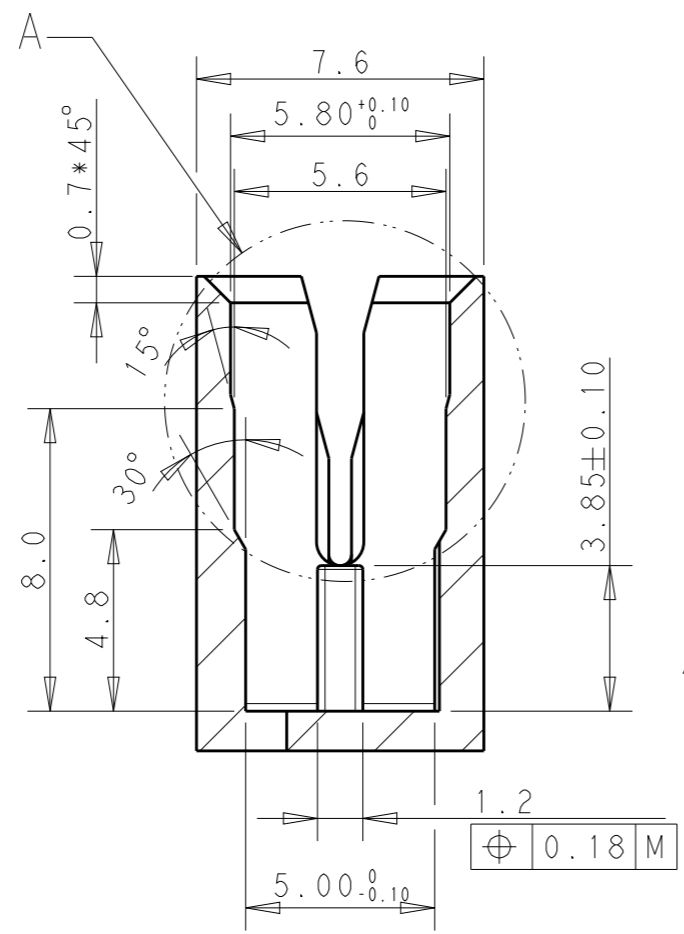
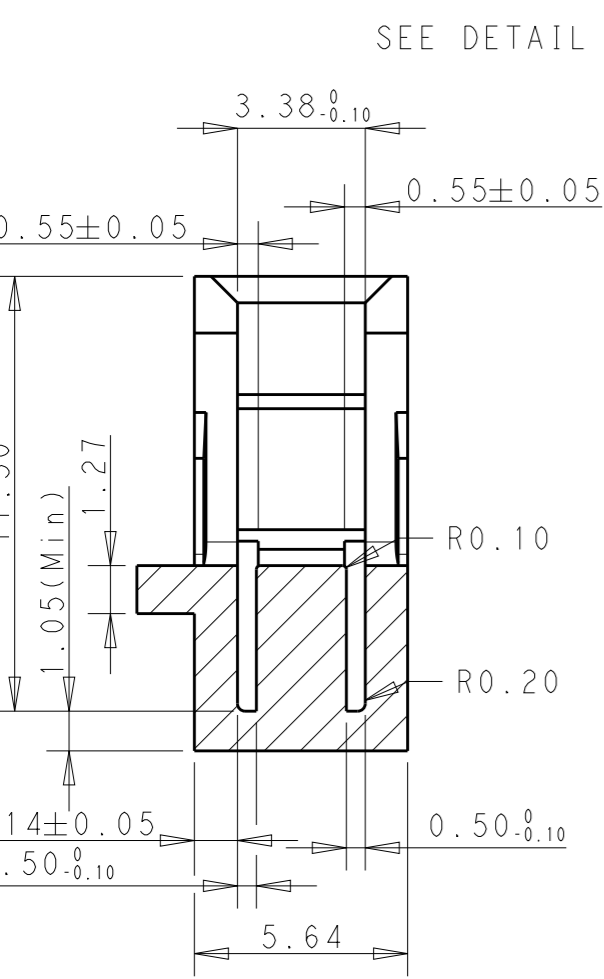
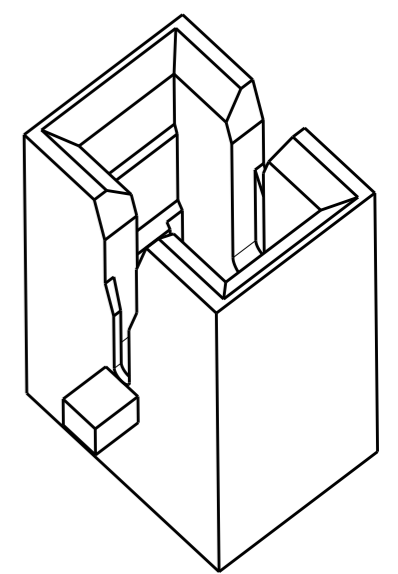
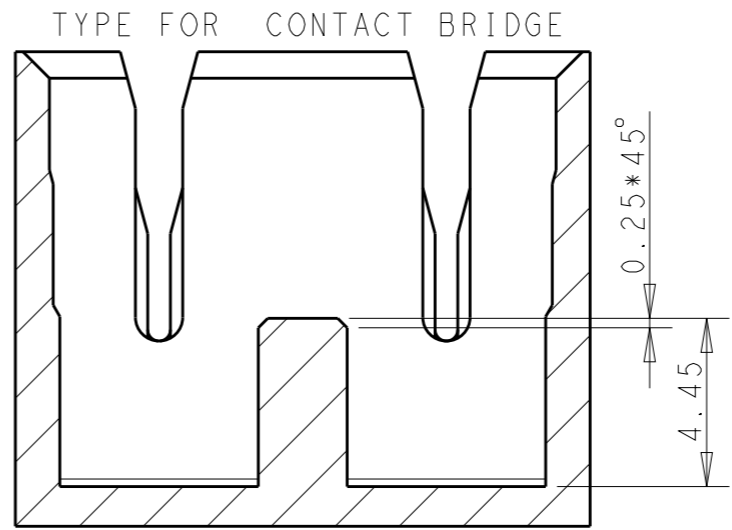
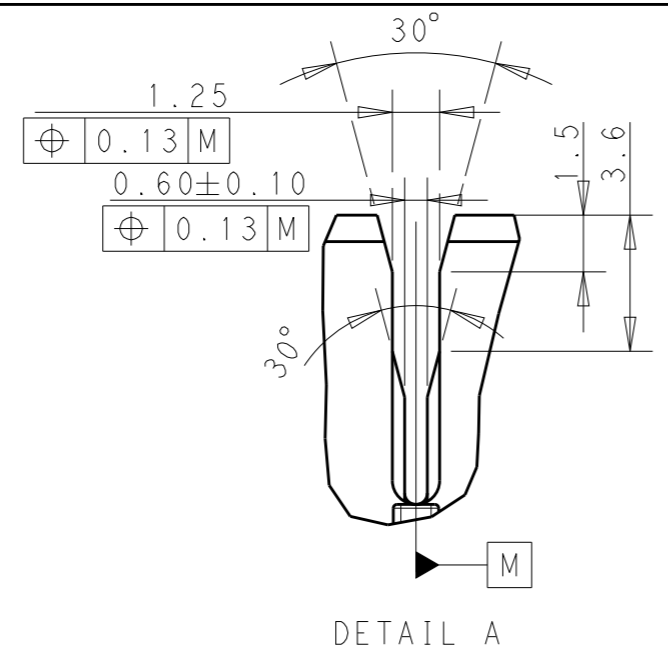
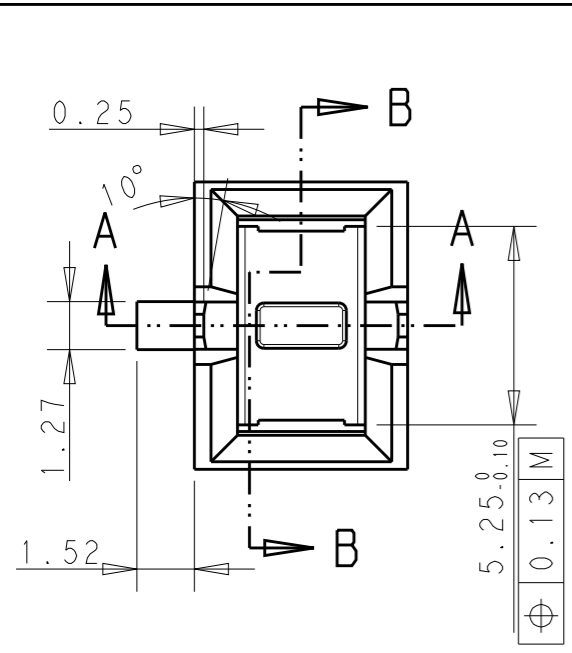


THIS DRAWING IS UNPUBLISHED. RELEASED FOR PUBLICATION 20  
 © COPYRIGHT 20 BY - ALL RIGHTS RESERVED.

REVISIONS		DESCRIPTION	DATE	DWN	APVD
P	LTR				
A		REVISE PER ECR-15-000760	12FEB2015	JUSTIN	JAIN



- NOTES:
1. THE WALL THICKNESS AT THE CUT OFF SIDE MUST BE SAME AT ALL CAVITIES.
  2. IT MUST BE GUARANTEED THAT THE MAGNET WIRE WILL TOUCH THE GROUND OF SLOT AND ANVIL. COIL WINDINGS OR OTHER PARTS HAVE TO BE LOWER THAN THE WIRE SLOT OF CAVITY TO GUARANTEE OPTIMIZED CONNECTIONS.
  3. RECOMMENDED THERMOPLASTIC MATERIAL: GLASS FILLED (MIN. 10%, MAX. 30%)
  4. DRAFT ANGLES MUST BE HELD WITHIN THE FEATURE TOLERANCE.
  5. IF OTHER DIMENSIONS ARE REQUIRED FOR THE APPLICATION. PLEASE CONTACT TE. (DEP. GATD)
  6. PART MATCH WITH 1534234-\*

SECTION A-A

SECTION B-B

THIS DRAWING IS A CONTROLLED DOCUMENT.		DWN JUSTIN 13NOV2014	TE Connectivity	
		CHK JAIN 14NOV2014		
		APVD RAJENDRA 14NOV2014	NAME CAVITY FOR NON-STANDARD MAG-MATE	
DIMENSIONS: mm		PRODUCT SPEC -		SIZE A3
TOLERANCES UNLESS OTHERWISE SPECIFIED:		APPLICATION SPEC 114-2046		CAGE CODE -
0 PLC ±0.50		WEIGHT -		DRAWING NO C-2232896
1 PLC ±0.20		Customer Drawing		RESTRICTED TO -
2 PLC ±0.15		SCALE 5:1		SHEET 1 OF 1
3 PLC ±				REV A
4 PLC ±				
ANGLES ±1				
FINISH -				
MATERIAL 3				