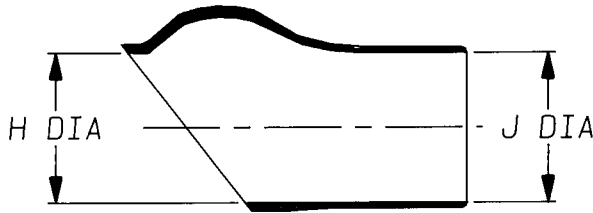
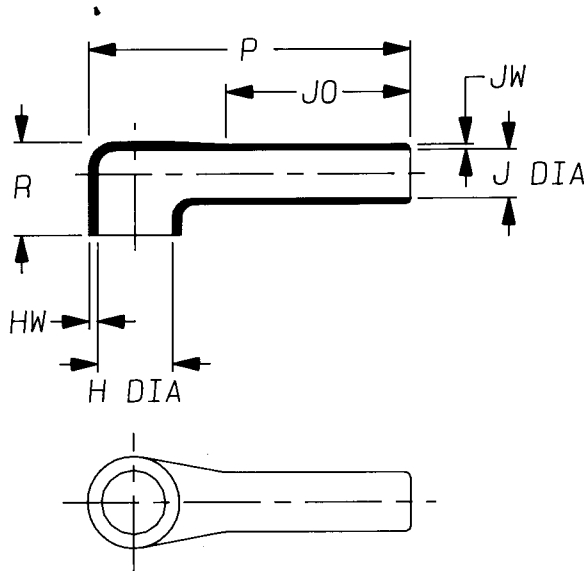


a) Part as supplied

222D221-G05



b) Part after unrestricted recovery



DIMENSIONS (in millimetres)

Part No.	H		J		P	R	JO	HW	JW
	Min	Max	Min	Max	±10%	Ref	±10%	±20%	±20%
	a	b	a	b	b	b	b	b	b
222D221-x-G05	26	15.0	26	7.4	60 #	17 *	35 #	1.5	1.1

THIS IS A TRIMMED VARIANT WITH LIP REMOVED
MODIFIED DIMENSIONS ARE SHOWN THUS: - #

Copyright (!)
Urheberrechte

The copyright in this drawing is the property of Raychem Ltd. The drawing is issued on condition that it is not copied, reproduced or disclosed to a third party, either in whole or in part without the prior written consent of Raychem Ltd.

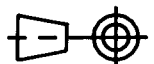
Drawn A.LILLEY. Checked *KL* Issue 1 Date September 1995 Conforms to ISO Recommendations

Approval
Design *AWP*

MKTG.

Q.C. *7/95*

3rd Angle Projection
Not to Scale



Iss.	Date	E.C.R. No.	Details of Change

Ordering Information

222D221-*G05/**-0

— Adhesive Slash Number (if required see compatibility chart)
 — Modification number
 — Material Dash Number (see compatibility chart)
 — Base Part Number

COMPATIBILITY CHART

MATERIAL DASH NUMBER	MATERIAL DESCRIPTION	COATING SLASH NUMBER
-3	POLYOLEFIN, SEMI-RIGID	/42, /86
-4	POLYOLEFIN, FLEXIBLE	/42, /86
-25	ELASTOMER, FLUID RESISTANT	/86, /225

AS SUPPLIED DIMENSIONS ARE FOR UNCOATED PARTS,
WHEN COATING IS ADDED, ENTRY DIAMETERS WILL REDUCE BY 1.5mm MAX.