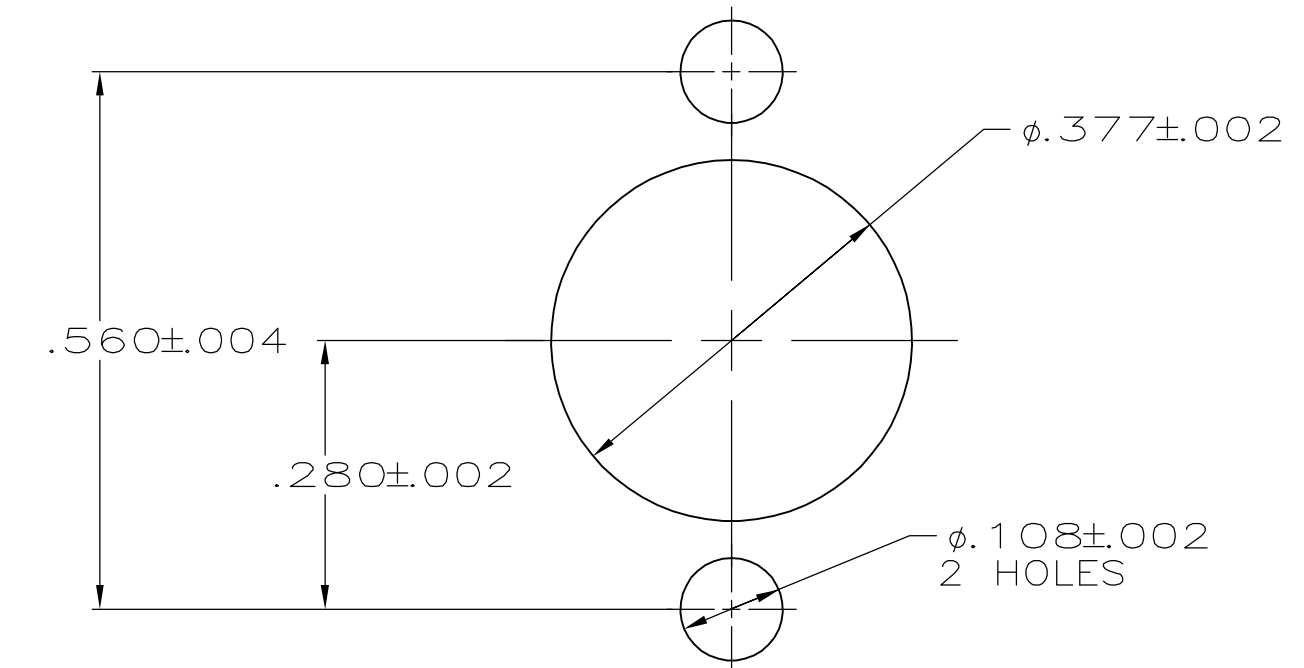
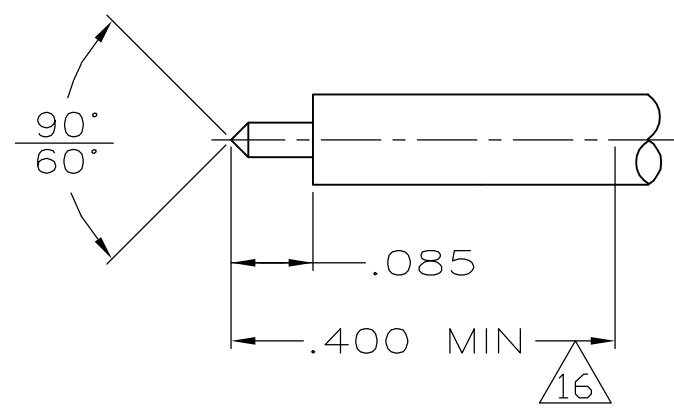
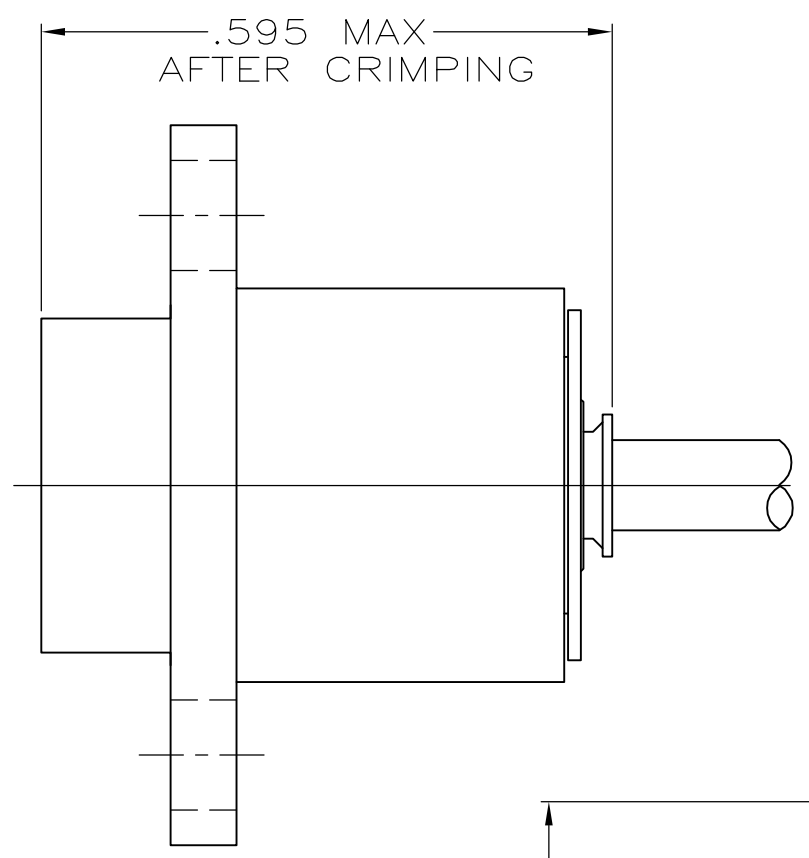
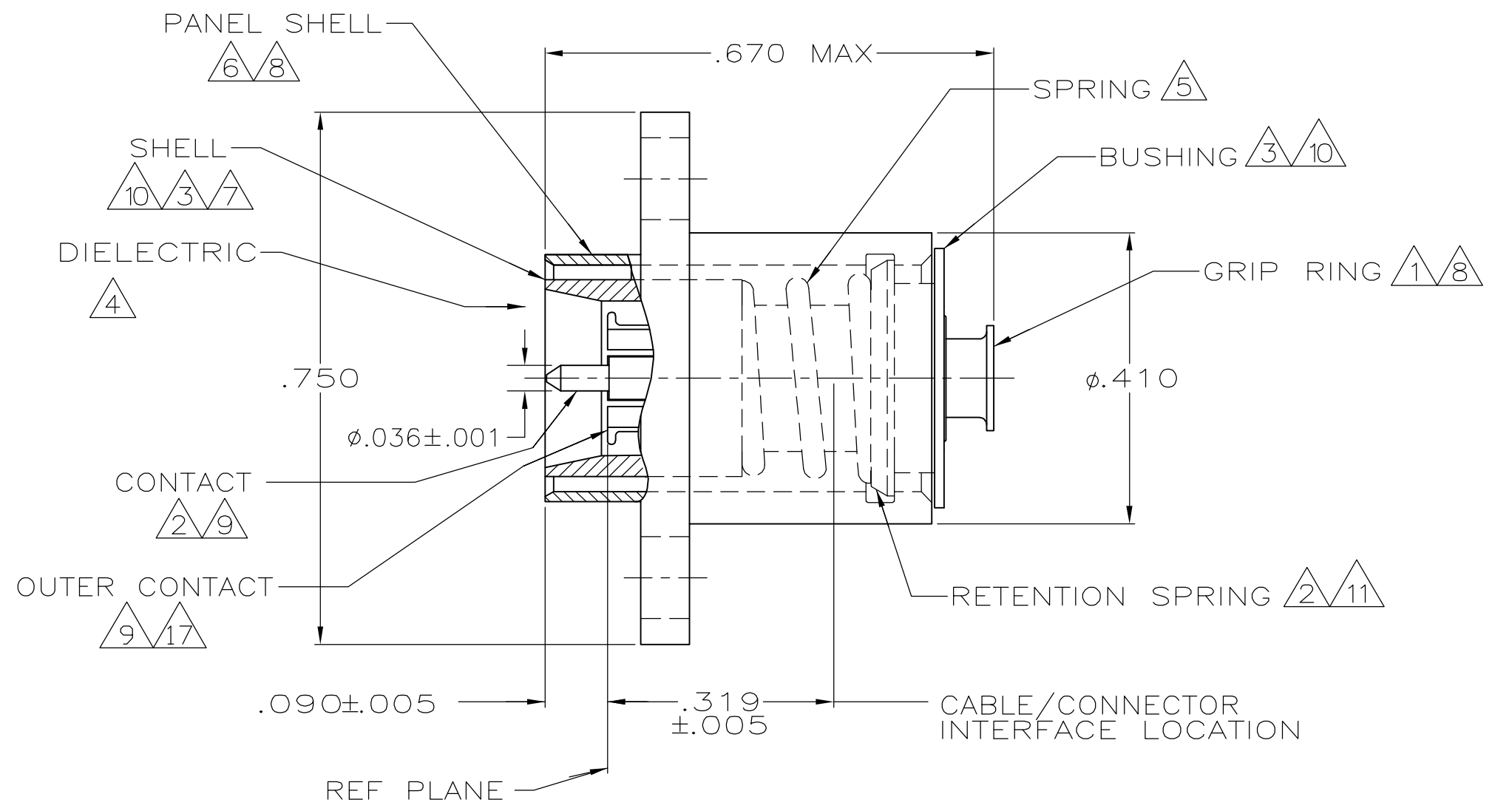


THIS DRAWING IS UNPUBLISHED. RELEASED FOR PUBLICATION
 © COPYRIGHT BY TYCO ELECTRONICS CORPORATION. ALL RIGHTS RESERVED.

LOC	DIST	REVISIONS					
		P	LTR	DESCRIPTION	DATE	DWN	APVD
AJ	16		C	PER EC 0S14-0200-04	12/6/04	DC	JGH



- 1 BRASS PER MIL-C-50
- 2 BERYLLIUM COPPER PER QQ-C-530
- 3 STAINLESS STEEL PER ASTM-A-582
- 4 PTFE PER MIL-P-19468
- 5 STEEL WIRE PER QQ-W-470
- 6 BRASS PER QQ-B-626
- 7 SEALANT
- 8 NICKEL PL PER QQ-N-290
- 9 GOLD PL PER MIL-G-45204
- 10 PASSIVATION PER QQ-P-35
- 11 TIN PL PER ASTM-B-545
- 12. FOR USE WITH: RG-402, .141 SEMI-RIGID CABLE
- 13. USE CRIMPING TOOL: 59980-1
- 14. .190 MAX PANEL THICKNESS
- 15. .060 MAX FLOAT PERMITTED DUE TO INTERNAL SPRING
- 16 STRAIGHT CABLE REQUIRED TO APPLY CONNECTOR
- 17 BOILLAT B05 PER UNS 53800.

RECOMMENDED STRIP LENGTH

RECOMMENDED MOUNTING HOLES

222200-1
 PART NUMBER

THIS DRAWING IS A CONTROLLED DOCUMENT.		DWN M. O'BRINE 01JUN00	Tyco Electronics Corporation Harrisburg, PA 17105-3608	
DIMENSIONS: inches		CHK J. HAVENER 01JUN00		
TOLERANCES UNLESS OTHERWISE SPECIFIED:		APVD J. HAVENER 01JUN00	NAME PLUG,PANEL,BMA MOUNT BLIND MATE 3.5mm	
0 PLC ± -		PRODUCT SPEC 108-12106	SIZE A2	
1 PLC ± -		APPLICATION SPEC	CAGE CODE 00779	DRAWING NO C=222200-1
2 PLC ± -			RESTRICTED TO	
3 PLC ± .008				
4 PLC ± -				
ANGLES ± -		WEIGHT -	SCALE 5:1	SHEET 1 OF 1
FINISH		CUSTOMER DRAWING	REV C	
MATERIAL 1 THRU 7, 17				
		8 THRU 11		

222200-1

A