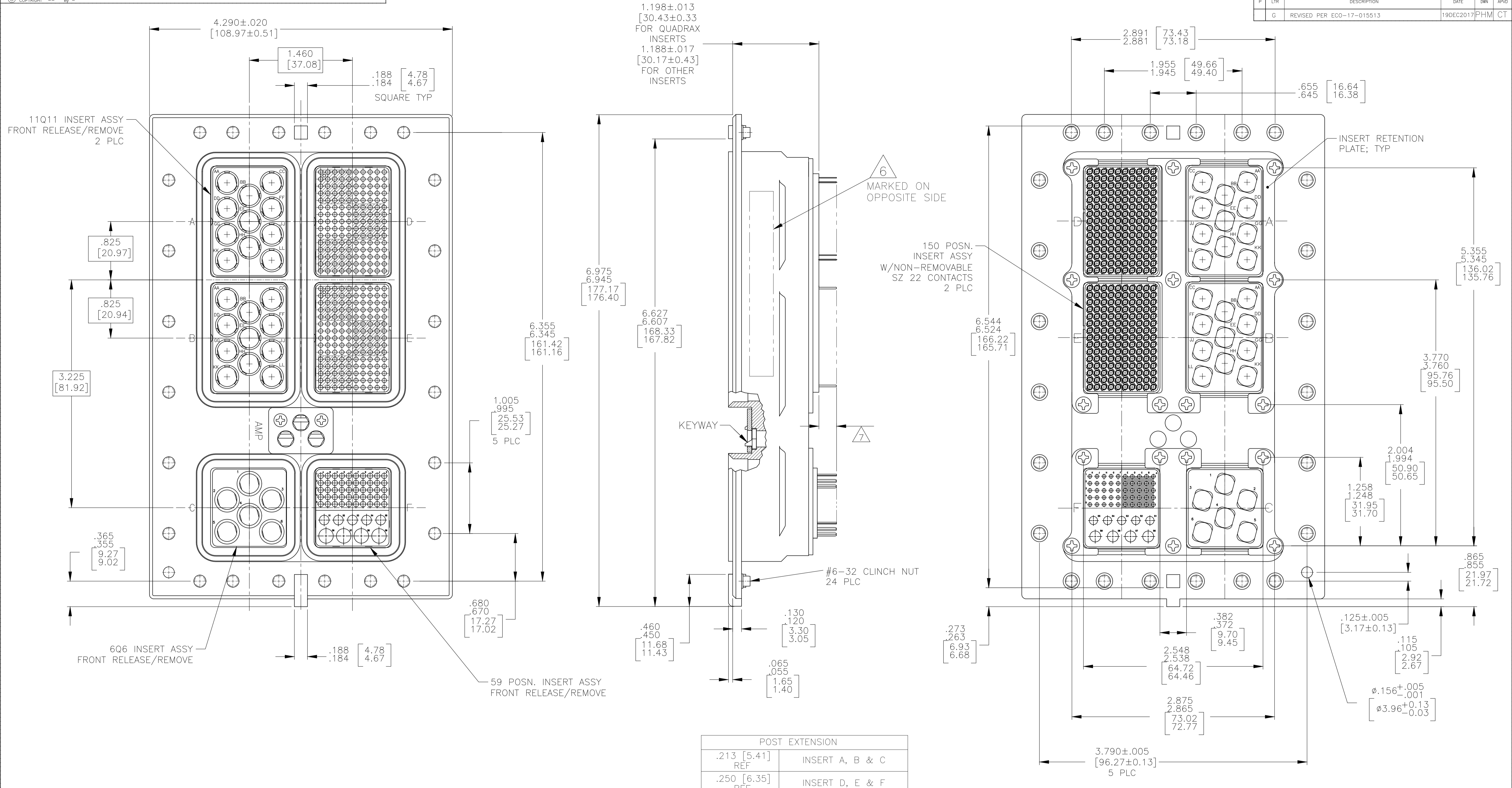


REVISIONS					
P	LTR	DESCRIPTION	DATE	DMN	APVD
G		REVISED PER ECO-17-015513	19DEC2017	PHM	CT



POST EXTENSION	
.213 [5.41] REF	INSERT A, B & C
.250 [6.35] REF	INSERT D, E & F

COMPONENT	MATERIAL	FINISH
SHELL	DIE CAST ALUMINUM PER ASTM-B-85	ELECTROLESS NICKEL PER MIL-C-26074
RETENTION PLATES	ALUMINUM ALLOY PER ASTM-B-209	ELECTROLESS NICKEL PER MIL-C-26074
SCREWS	STEEL OR STAINLESS STEEL	PASSIVATED
POLARIZING KEYS	ZINC ALLOY PER ASTM-B-86	-
POLARIZING KEY RETAINING PLATE	ALUMINUM ALLOY PER ASTM-B-209	BLUE ANODIZED PER MIL-A-8625
150 AND 59 INSERTS	THERMOSET	-
11Q11 AND 6Q6 INSERTS	ALUMINUM ALLOY PER ASTM-B-209	ELECTROLESS NICKEL PER MIL-C-26074

"130"	MODULE A 1445626-1 (SIZE 8 POSTED QUADRAX; QTY = 11)	2221424-1
	MODULE B 1445626-1 (SIZE 8 POSTED QUADRAX; QTY = 11)	
	MODULE C 1445626-1 (SIZE 8 POSTED QUADRAX; QTY = 6)	
	MODULE D SIZE 22 NON-REMOVABLE POSTED SOCKET CONTACT QTY = 150	
KEYING POSITION	MODULE E SIZE 22 NON-REMOVABLE POSTED SOCKET CONTACT QTY = 150	PART NUMBER
	MODULE F 1-211431-5 (SZ 22 POSTED SOCKET CONTACT; QTY = 50)	
	1-448139-5 (SZ 16 POSTED PIN CONTACT; QTY = 5) 448140-9 (SZ 12 POSTED PIN CONTACT; QTY = 4)	

- CONNECTOR DIMENSIONS ARE PER ARINC 600 SPECIFICATION
 - DUST COVER (NOT SHOWN) INSTALLED FOR SHIPPING.
 - CONTACTS NOT SHOWN IN FRONT & REAR VIEWS FOR CLARTY.
 - CONTACT INCLUDED PER TABLE, LOCATION OF CONTACTS IN MODULE A, MODULE D & MODULE F TO BE DETERMINED.
 - KEYING INSTALLED IN POSITION "130" PER TABLE. FOR POSITION "00" KEYING SHIPPED UNASSEMBLED.
- 6 MARKING: 442-1915-001, REV H, 2221424-1, REV G, AND DATE CODE ON OPPOSITE SIDE SHOWN.
- 7 SEE TABLE FOR POST EXTENSION.

THIS DRAWING IS A CONTROLLED DOCUMENT.

DIMENSIONS: INCHES	TOLERANCES UNLESS OTHERWISE SPECIFIED:	DIN C.C.THOMAS 9-5-12	APVD K.HOGAN 9-5-12	NAME
0 PLC ± .005	1 PLC ± .005			RCPT ASSY, SIZE 3 SPECIAL, ARINC 600 (11Q11/11Q11/6Q6/150/150/59)
2 PLC ± .005	3 PLC ± .005			APPLICATION SPEC
4 PLC ± .005	ANGLES ± .005			SIZE: A1
MATERIAL SEE TABLE	FINISH SEE TABLE	WEIGHT	00779	DRAWING NO: 2221424
				RESTRICTED TO: -
				CUSTOMER DRAWING

SCALE: 3:2 SHEET 1 OF 1 REV G