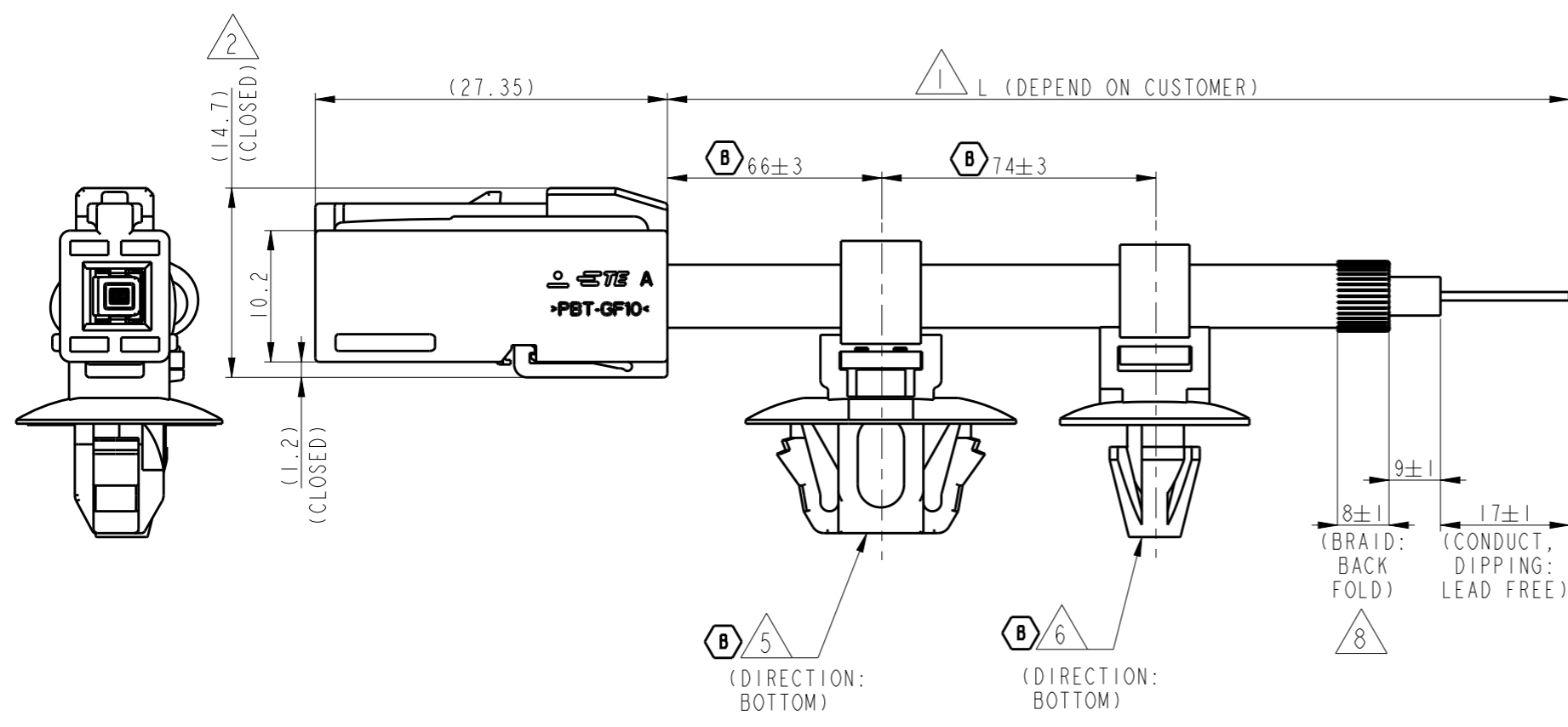
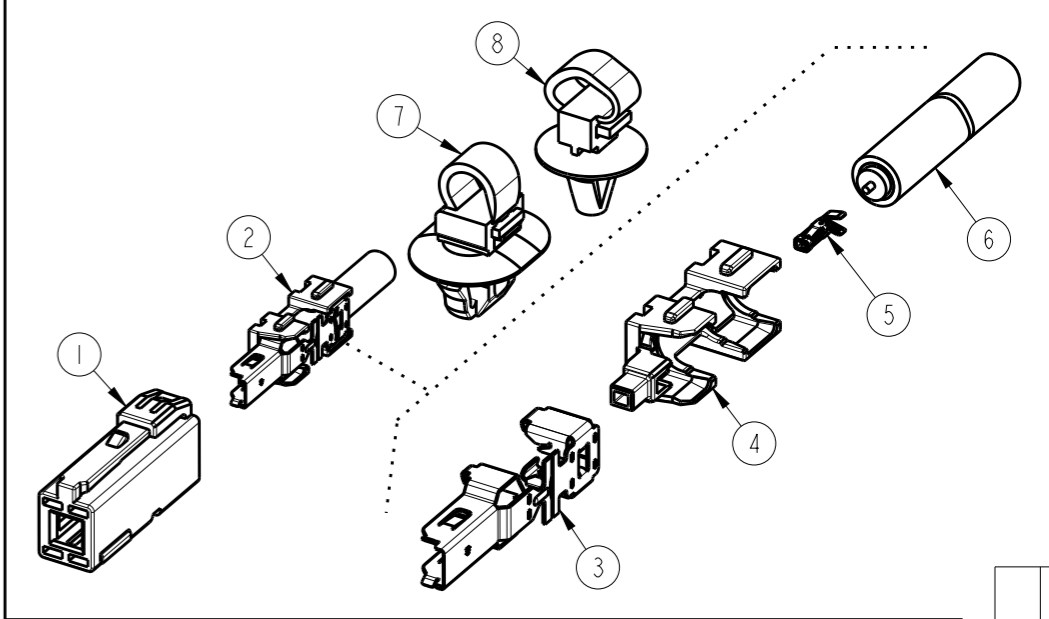
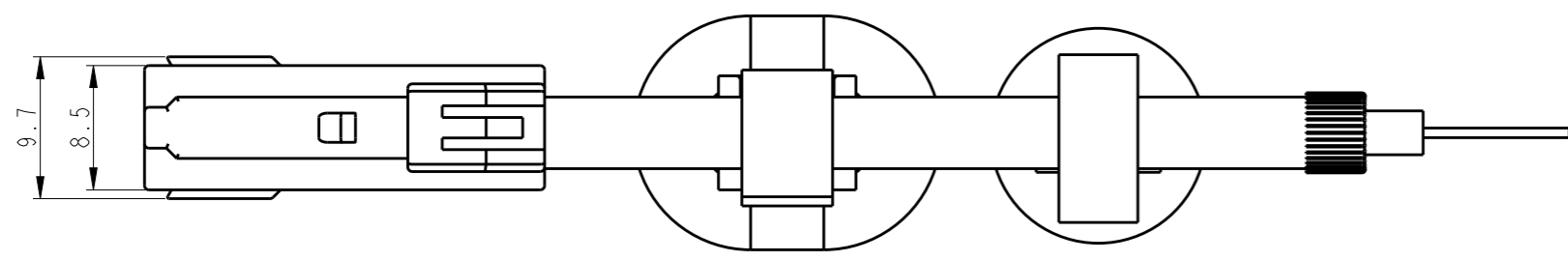
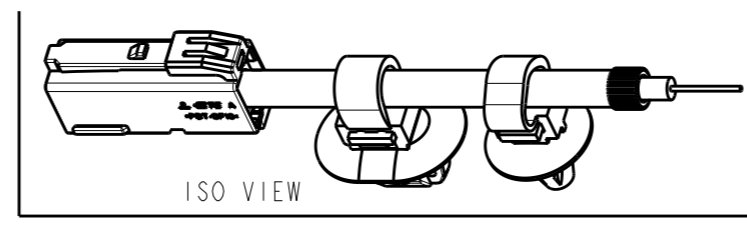
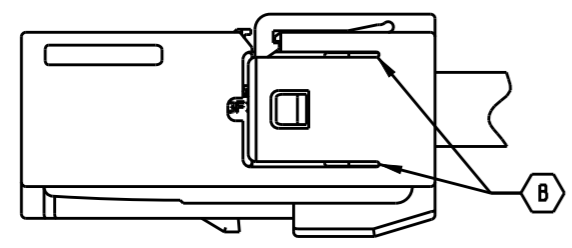


THIS DRAWING IS UNPUBLISHED. RELEASED FOR PUBLICATION 20
 © COPYRIGHT 20 BY - ALL RIGHTS RESERVED.

REVISIONS					
P	LTR	DESCRIPTION	DATE	DWN	APVD
B		REVISED(ECR-18-005350)	23. APR '18	CJ	GC



NOTE
 1. LENGTH "L": 216mm ±4
 CABLE : RG-58 C/U COAXIAL CALBLE
 JACKET DIA : 4.9mm~5.0mm
 CONDUCTOR : 19/0.18 STRAND
 2. DELIVERY CONDITION: SECONDARY LOCK IS CLOSED.
 3. THE MATING HEADER ASS'Y P/N:2219632.
 4. GENERAL TOLRANCE: ±0.3
 5. BAND CABLE (KUM P/N:GB100-12020-C01, BLACK)
 - PANEL HOLE: Ø7X12
 - PANEL THICKNESS: 1st LOCK t=1.3~2.0
 2nd LOCK t=0.5~1.2
 6. BAND CABLE (KUM P/N:HB010-05120-C01E, GRAY)
 - PANEL: Ø7
 - PANEL THICKNESS: 1st LOCK t=1.4~2.0
 2nd LOCK t=0.7~1.3
 7. BAND CABLE CUTTING LENGTH : 3~5mm. ACCRDING TO ES91101-00
 8. BRAID BACK FOLDING: BRAID STRAIGHT ALIGNMENT
 9. PACKING: EMOSS TRAY IN BOX

NO	COLOR	FINISH	MATERIAL	DESCRIPTION	P/NO	Q'TY
8	GRAY	-	-	BAND CABLE	HB010-05120-C01E	1
7	BLACK	-	-	BAND CABLE	GB100-12020-C01	1
6	BLACK	-	-	COAX. CABLE	2219685-1	1
5	-	POST-TIN, GOLD	PMC26	REC. CONTACT	2005002-3	1
4	GRAY	-	PBT-GF30	REC. DIELECTRIC	1897795-3	1
3	-	POST-TIN	PMC26	REC. SHIELD	1897796-2	1
2	-	-	-	PLUG KIT ASS'Y	2219684-1	-
1	BLACK	-	PBT-GF10	IP PLUG HSG	2219683-2	1

RF IP PLUG CABLE ASS'Y DESCRIPTION

THIS DRAWING IS A CONTROLLED DOCUMENT.	
DIMENSIONS: mm	TOLERANCES UNLESS OTHERWISE SPECIFIED: 0 PLC ±0.1 1 PLC ±0.1 2 PLC ±0.01 3 PLC ±0.001 4 PLC ±0.0001 ANGLES ±
MATERIAL	FINISH

DWN CJ CHOI	TE Connectivity			
CHK GC KWON				
APVD GC KWON	NAME			
PRODUCT SPEC	RF IP PLUG CABLE ASS'Y, LARGE			
APPLICATION SPEC	SIZE	CAGE CODE	DRAWING NO	RESTRICTED TO
WEIGHT	A3	00779	C-2219633	
RESTRICTED CUSTOMER	SCALE	SHEET	OF	REV
	2:1	1	1	B