

D

C

B

A

D

C

B

A

NOTES:

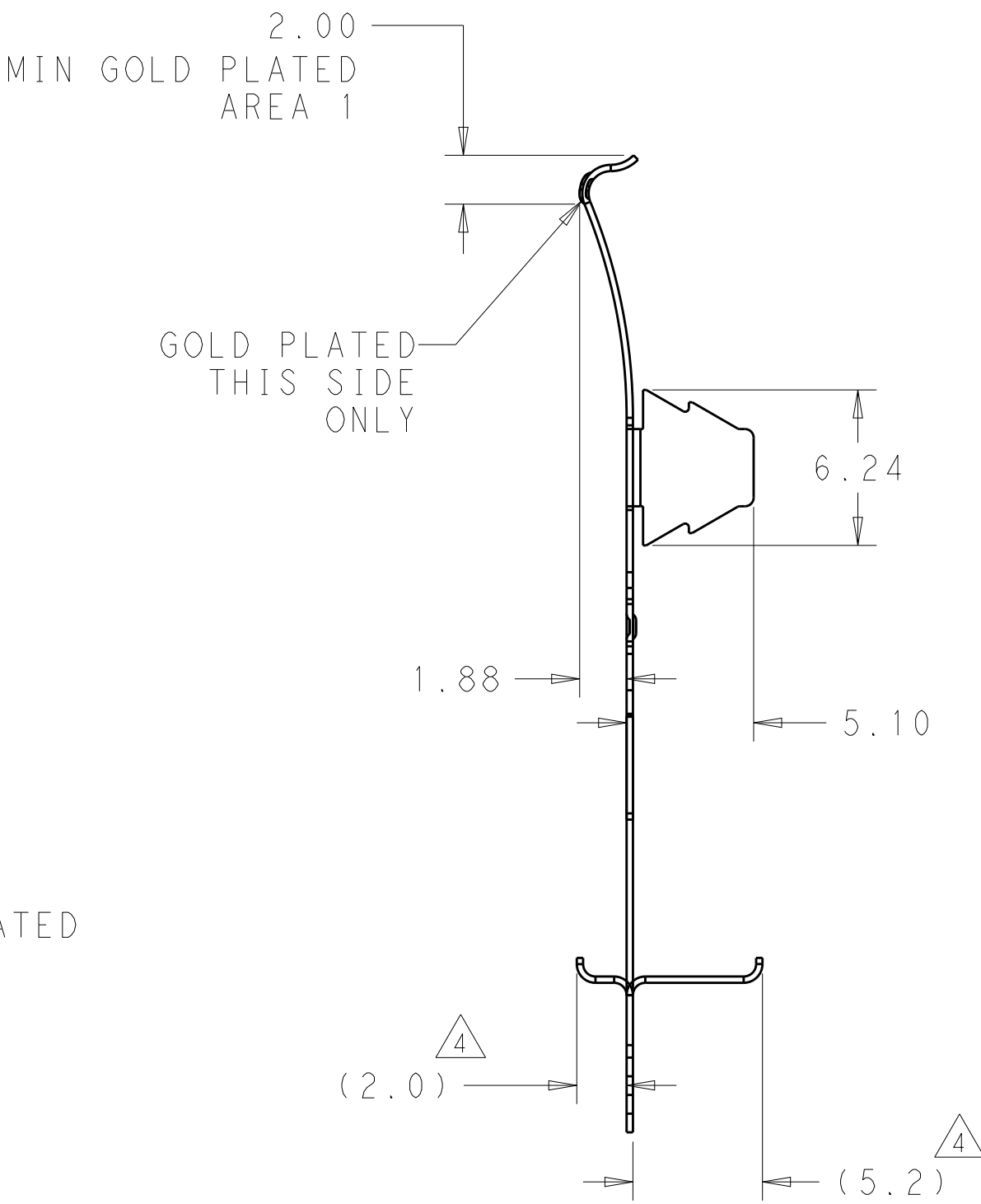
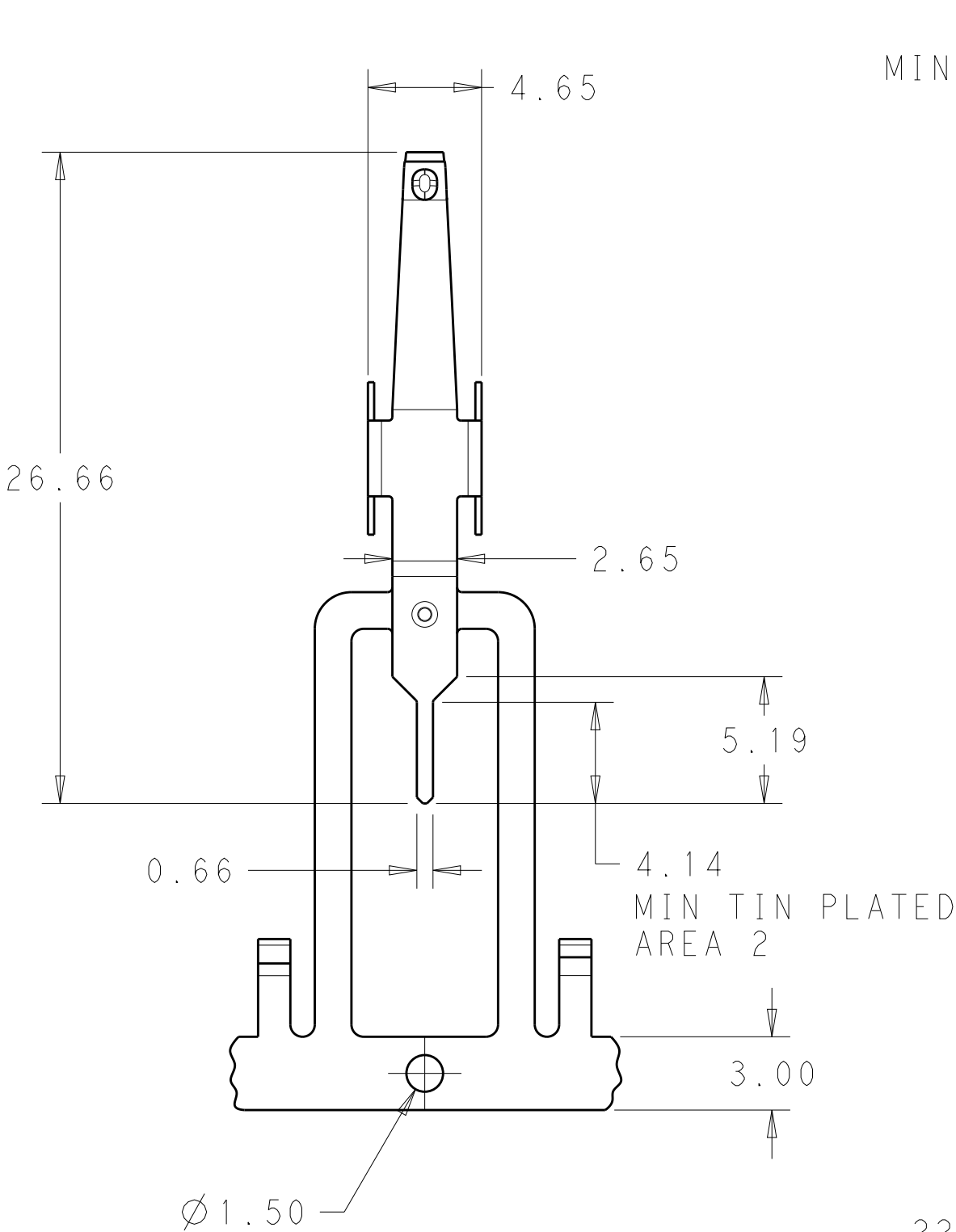
1. MATERIAL: COPPER ALLOY 0.254 THICK

FINISH: NICKEL UNDERPLATE ENTIRE
CONTACT 0.127 µm MIN THICK.
GOLD PLATED IN AREA 1 ON ONE
SIDE ONLY 0.76 µm MIN THICK.
MATTE TIN PLATED IN AREA 2
3.0 µm MIN THICK

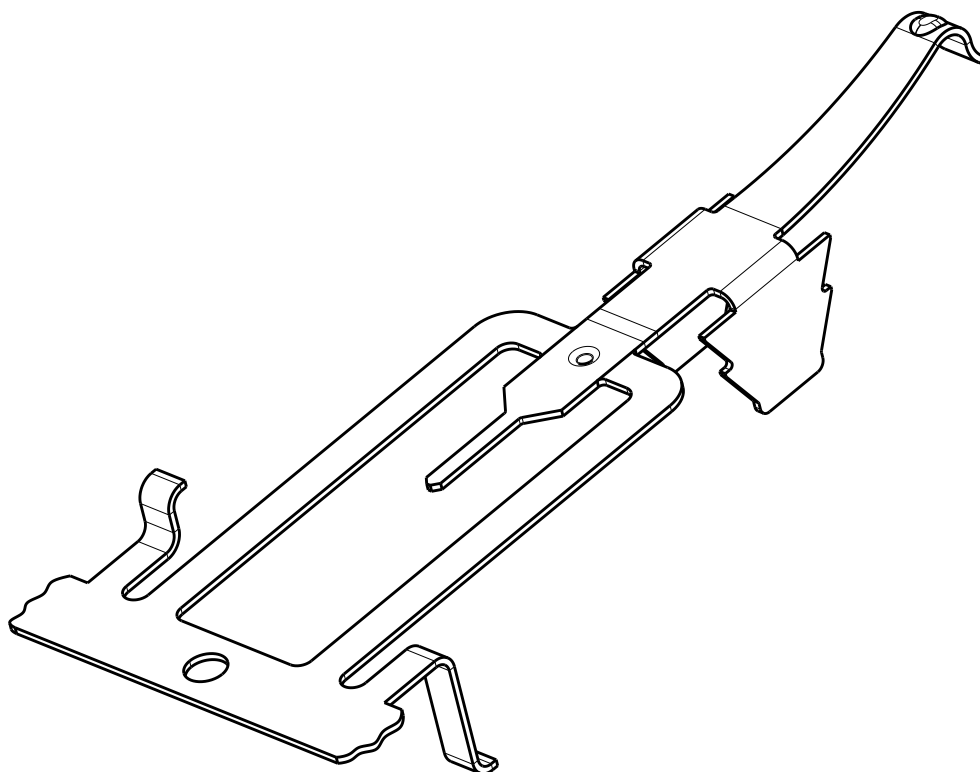
2 FINAL FORMING AND LOOSE PIECE OPERATIONS
AS SHOWN ON SHEET 2 MUST BE PERFORMED
BY CUSTOMER.

3. APPLICATION FEED IS 14.64.

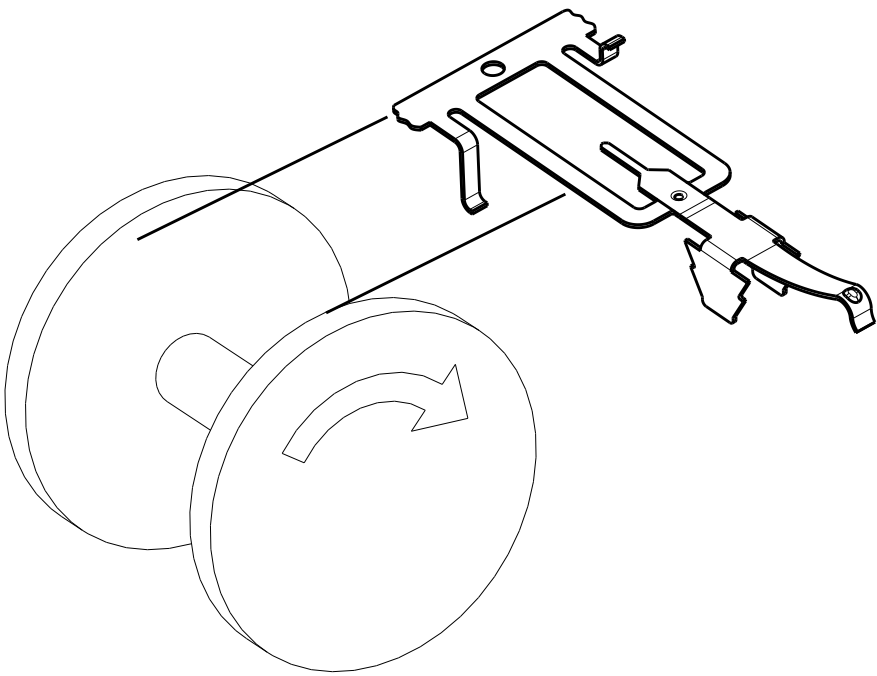
4 CARRIER STRIP STANDOFFS PROVIDE
PRODUCT PROTECTION DURING SHIPPING.



2213497-1 AS SHOWN



SCALE 4:1



REELING DIRECTION

AS SHOWN - ON STRIP	2213497-1
DESCRIPTION	PART NO.

THIS DRAWING IS A CONTROLLED DOCUMENT.		DWN J. SHAFFER 05MAY2014	<div> TE Connectivity</div>			
DIMENSIONS:		CHK E. HOWARD 05MAY2014				
mm		APVD E. HOWARD 05MAY2014	NAME DIMMABLE PHOTOCONTROL BRUSH CONTACT			
		PRODUCT SPEC	-			
		APPLICATION SPEC	-			
MATERIAL		WEIGHT	-			
-		Customer Drawing	-			
-		Customer Drawing	-			
Customer Drawing			SCALE 2:1	SHEET 1 OF 4	REV A1	

REVISIONS					
P	LTR	DESCRIPTION	DATE	DWN	APVD
	-	SEE SHEET 1	-	-	-

D

D

C

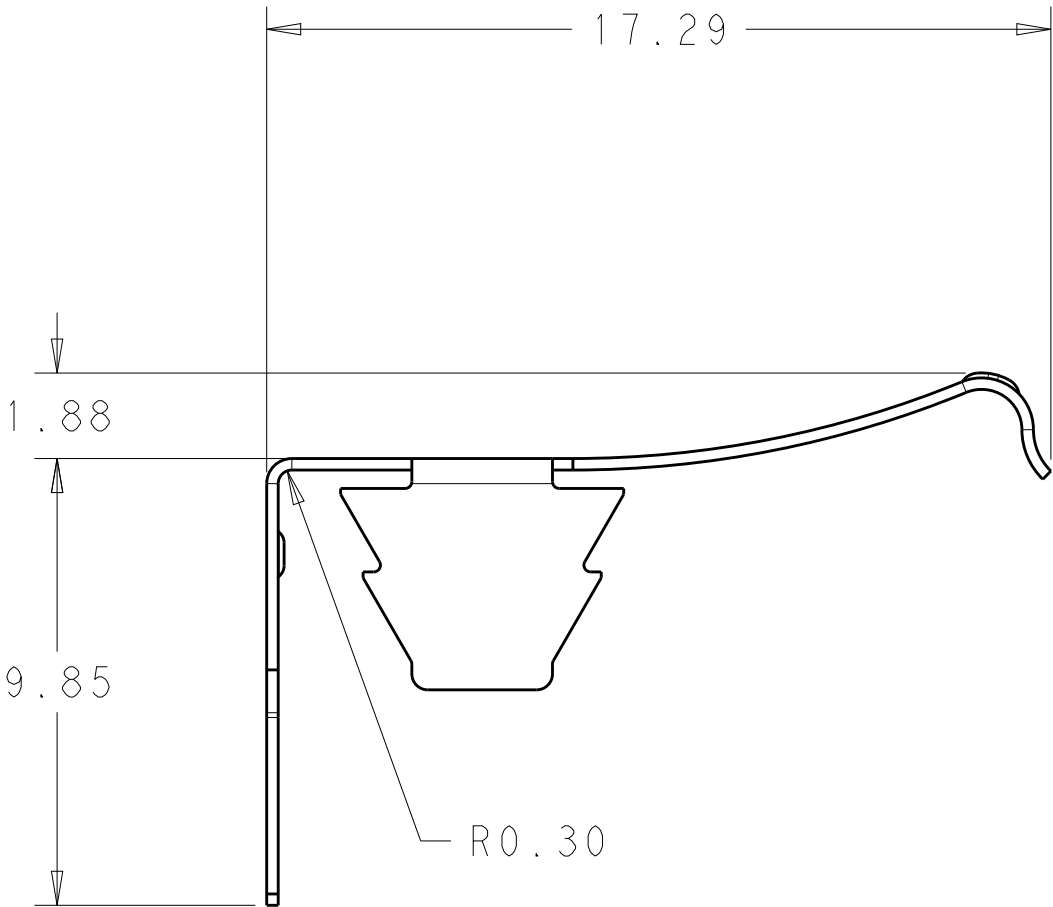
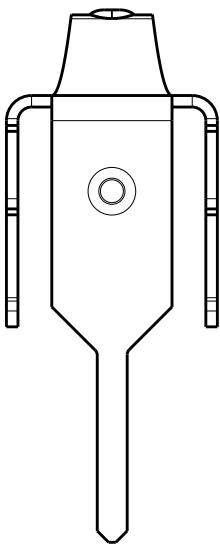
C

B

B

A

A



RECOMMENDED FINAL FORMED
LOOSE PIECE
FINAL FORM AND LOOSE PIECE
OPERATION MUST BE
PERFORMED BY CUSTOMER

THIS DRAWING IS A CONTROLLED DOCUMENT.		DWN J. SHAFFER 05MAY2014	TE Connectivity			
DIMENSIONS:		CHK E. HOWARD 05MAY2014				
mm	TOLERANCES UNLESS OTHERWISE SPECIFIED:	APVD E. HOWARD 05MAY2014	NAME DIMMABLE PHOTOCONTROL BRUSH CONTACT			
	0 PLC ±-	PRODUCT SPEC	SIZE			
	1 PLC ±-	-	CAGE CODE			
	2 PLC ±0.13	APPLICATION SPEC	DRAWING NO			
	3 PLC ±-	-	RESTRICTED TO			
MATERIAL		WEIGHT	A200779C-2213497			
FINISH		Customer Drawing	SCALE 2:1 SHEET 2 OF 4 REV A1			

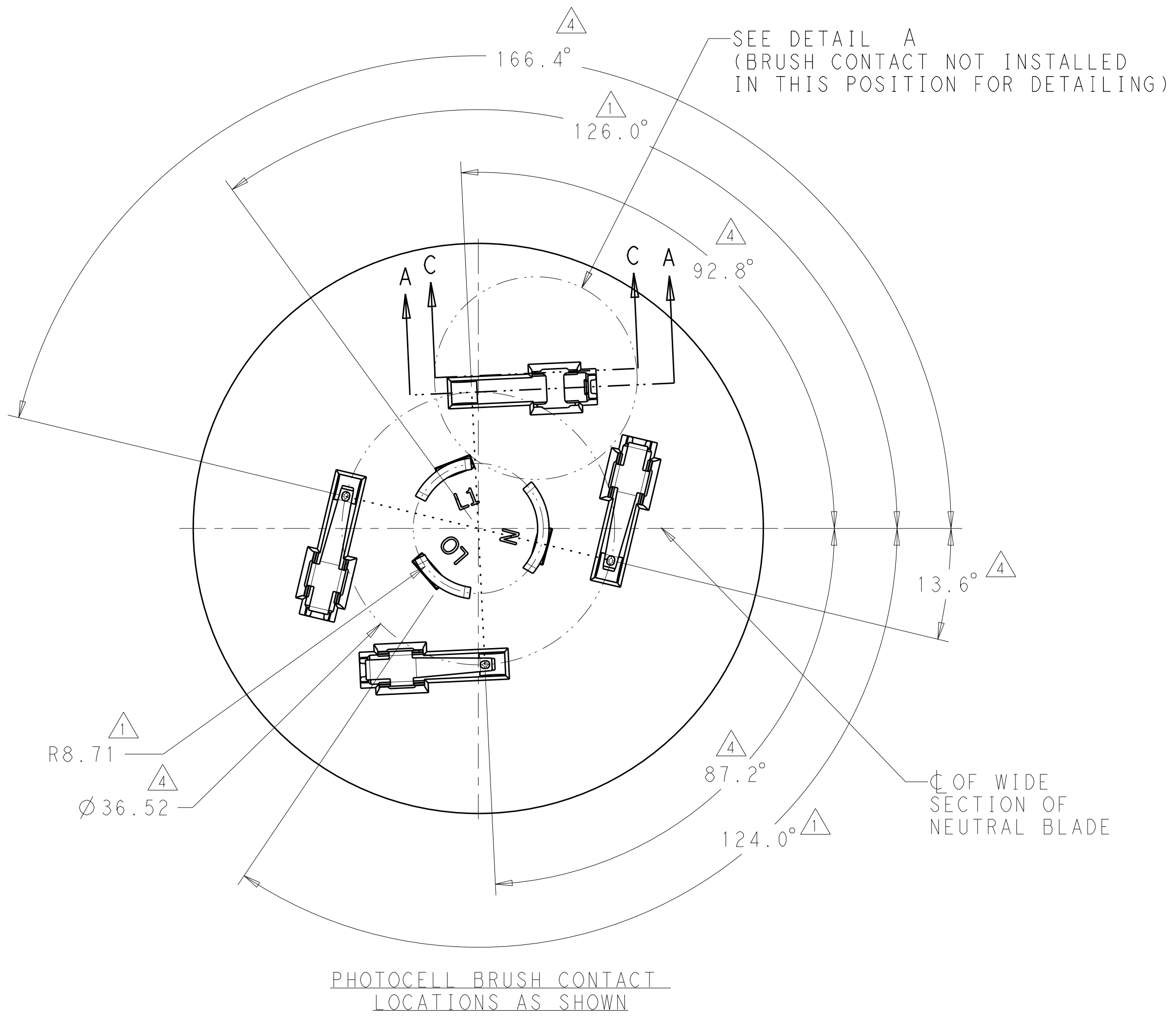
REVISIONS					
P	LTR	DESCRIPTION	DATE	DWN	APVD
	-	SEE SHEET 1	-	-	-

D

C

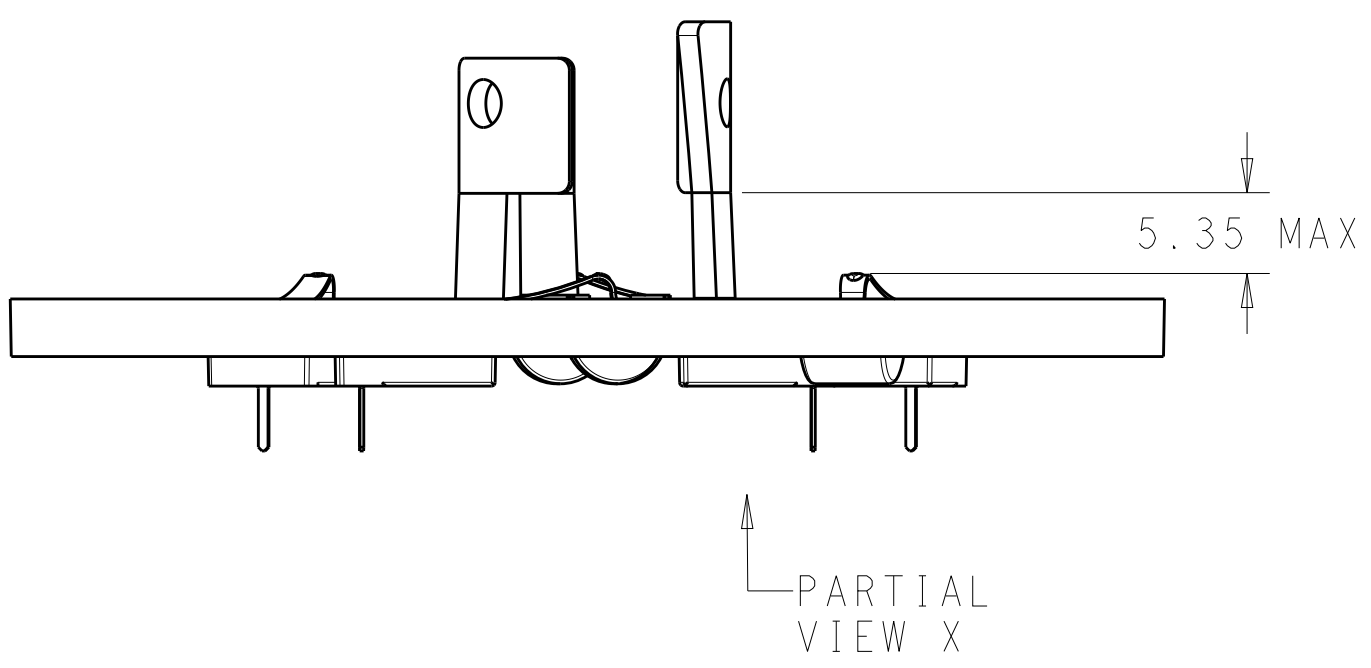
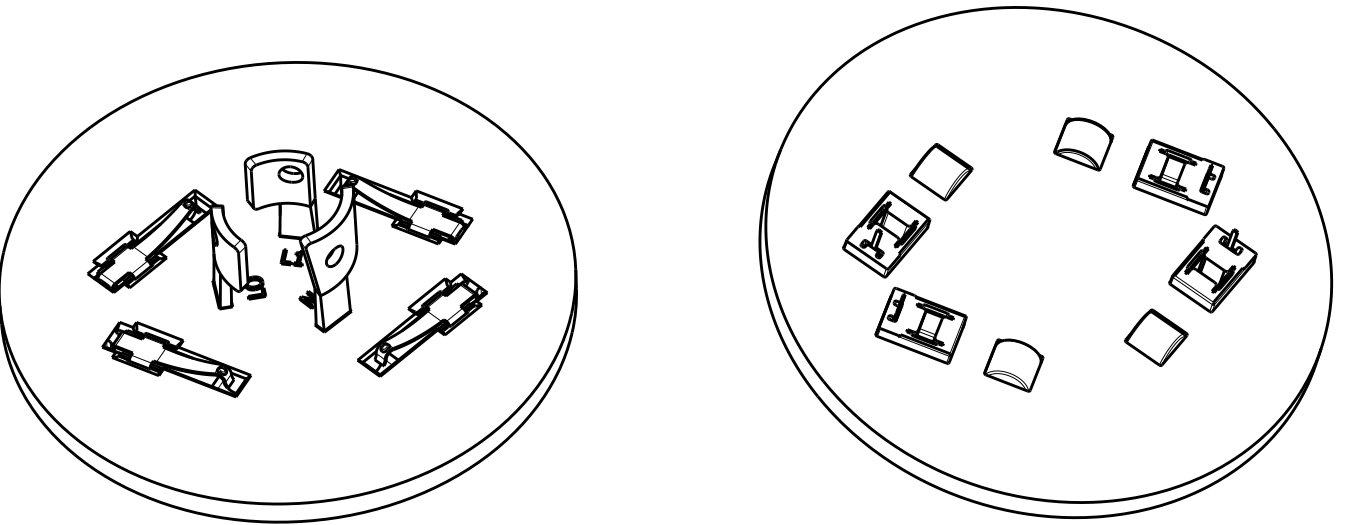
B

A



NOTES FOR BRUSH CONTACT POCKET DETAILS:

- 1. DIMENSIONS ARE PER ANSI C136.10
- 2. UNLESS OTHERWISE NOTED, ALL DIMENSIONS ARE $\pm 0.127\text{mm}$
- 3. UNLESS OTHERWISE NOTED, ALL ANGLES ARE $\pm 0.5^\circ$
- 4. CIRCULAR AND ANGULAR POSITION FOR CONTACT POINT ON BRUSH CONTACT.
- 5. CUSTOMER MAY ROTATE BRUSH CONTACT POCKET PER THEIR PHOTOCELL DESIGN REQUIREMENTS, BUT BRUSH CONTACT POINT MUST BE POSITIONED AS SHOWN TO BE COMPATIBLE WITH ANSI C136.41-2013 DIMMING RECEPTACLE.
- 6. DIM "T" MUST BE DETERMINED BY CUSTOMER. THIS BASE THICKNESS DETERMINES CUSTOMER'S SOLDER TAIL LENGTH.



THIS DRAWING IS A CONTROLLED DOCUMENT.		DWN J. SHAFFER 05MAY2014	TE Connectivity			
DIMENSIONS:		CHK E. HOWARD 05MAY2014				
mm		APVD E. HOWARD 05MAY2014	NAME DIMMABLE PHOTOCONTROL BRUSH CONTACT			
		TOLERANCES UNLESS OTHERWISE SPECIFIED:	PRODUCT SPEC			
		0 PLC \pm	APPLICATION SPEC			
MATERIAL		1 PLC \pm	WEIGHT			
		2 PLC ± 0.13	Customer Drawing			
		3 PLC \pm	SCALE 2:1			
		4 PLC \pm	SHEET 3 OF 4			
		ANGLES \pm	REV A1			
		FINISH				

