

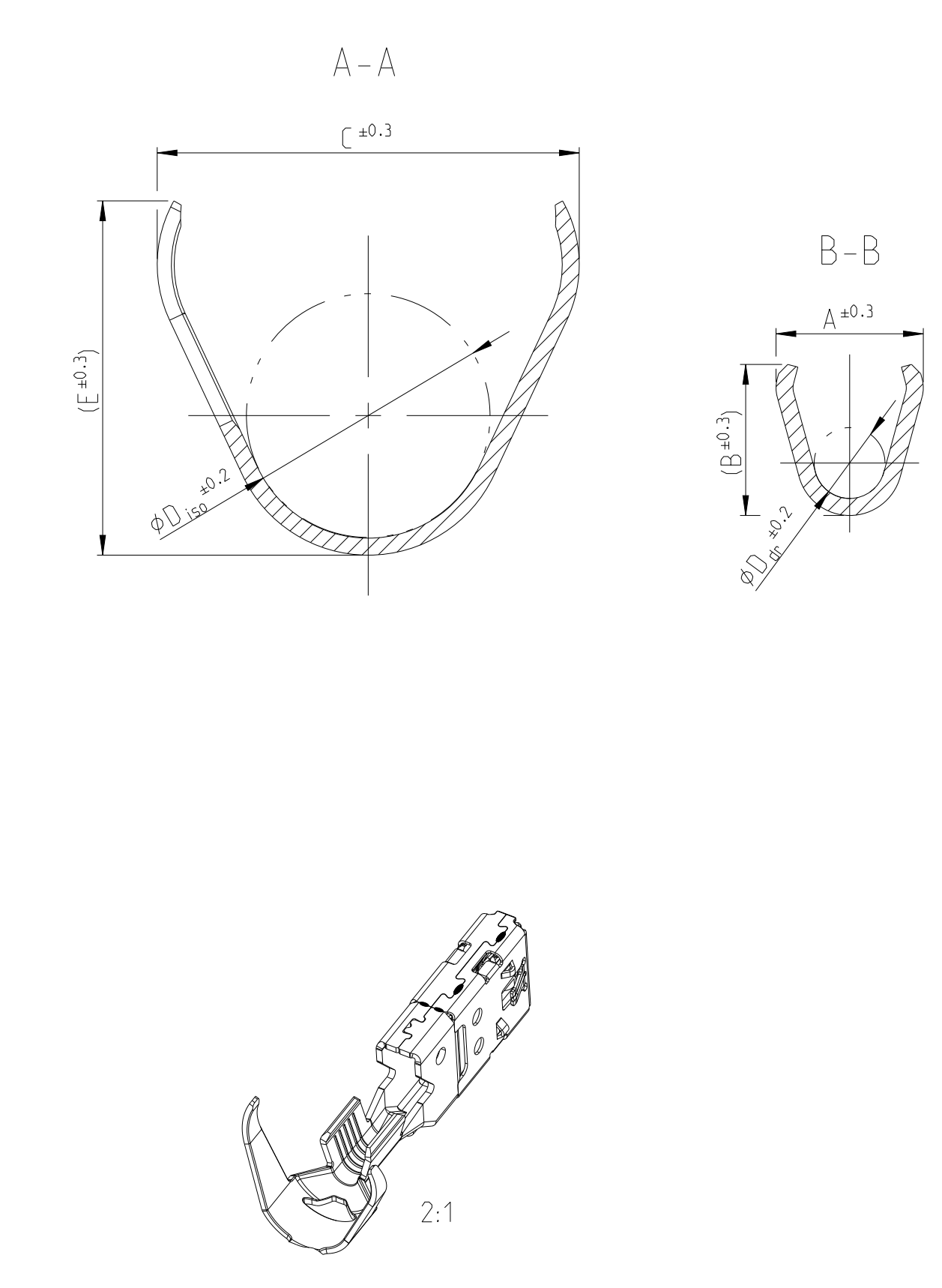
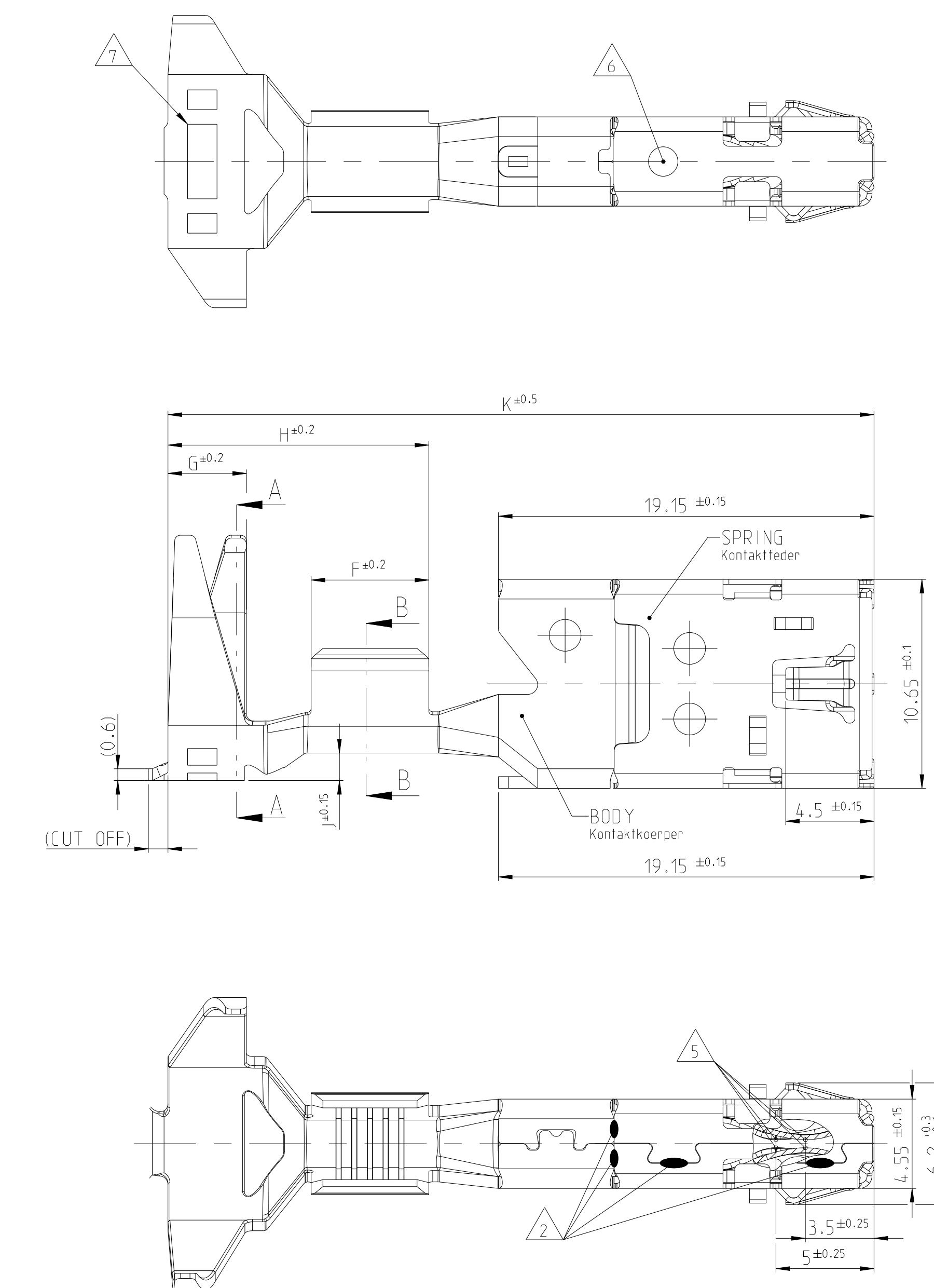
- SEALED VERSION / gedichtete Version -

THE DRAWING SHOWS THE 2-DIMENSIONAL REFERENCE COMPONENT CONDITION OF THE ASSEMBLY TO IDENTIFY AND SPECIFY THE NECESSARY DIMENSIONS ONLY. THE DELIVERED PARTS MAY DEVIATE FROM THE DRAWING REGARDING THE ORIENTATION AND POSITION OF EACH COMPONENT (e.g. SLACK LABEL), SO FAR THE FUNCTIONALITY IS NOT COMPROMISED.

REVISIONS			
NO.	DATE	DESCRIPTION	BY
C 1	20021202	SEE ECR-22-156805	EH
C 2	08FEB2023	SEE ECR-23-165755	RH
C 3	29MAR2023	SEE ECR-23-169971	EH
C 4	24MAY2023	SEE ECR-23-175284	SEK

- NOTES**
Bemerkungen
- TO BE USED WITH TAB 8x0.8/1.2mm OR 9.5x0.8/1.2mm ACC. INTERFACE DRAWING 114-94201 REV. A2 OR NEWER
Geeignet fuer Flachstecker 8x0.8/1.2mm oder 9.5x0.8/1.2mm nach Auslieferungschrift 114-94201 Rev. A2 oder neuer
 - LASER WELDED
Lasergeschweisst
 - CONTACT BODY PRE TIN SnAg 2 TO 4 µm
Kontaktkoerper verzinkt SnAg 2 bis 4 µm
 - CODING 1 AS SHOWN
Kodierung 1 dargestellt
 - CONTACT AREA GALVANIC PLATED SILVER 2 TO 5 µm
Kontaktbereich galvanisch versilbert 2 bis 5 µm
 - STAMPED INDICATOR FOR SURFACE IN CONTACT AREA:
- AG: SILVER PLATING
Markierung fuer Oberflaeche im Kontaktbereich
- AG: versilbert
 - REVISION STATUS
Aenderungsstand
 - 114-94285 AND 108-94421 NOT FOR NEW APPLICATIONS.
114-94285 und 108-94421 nicht fuer Neuanwendungen.

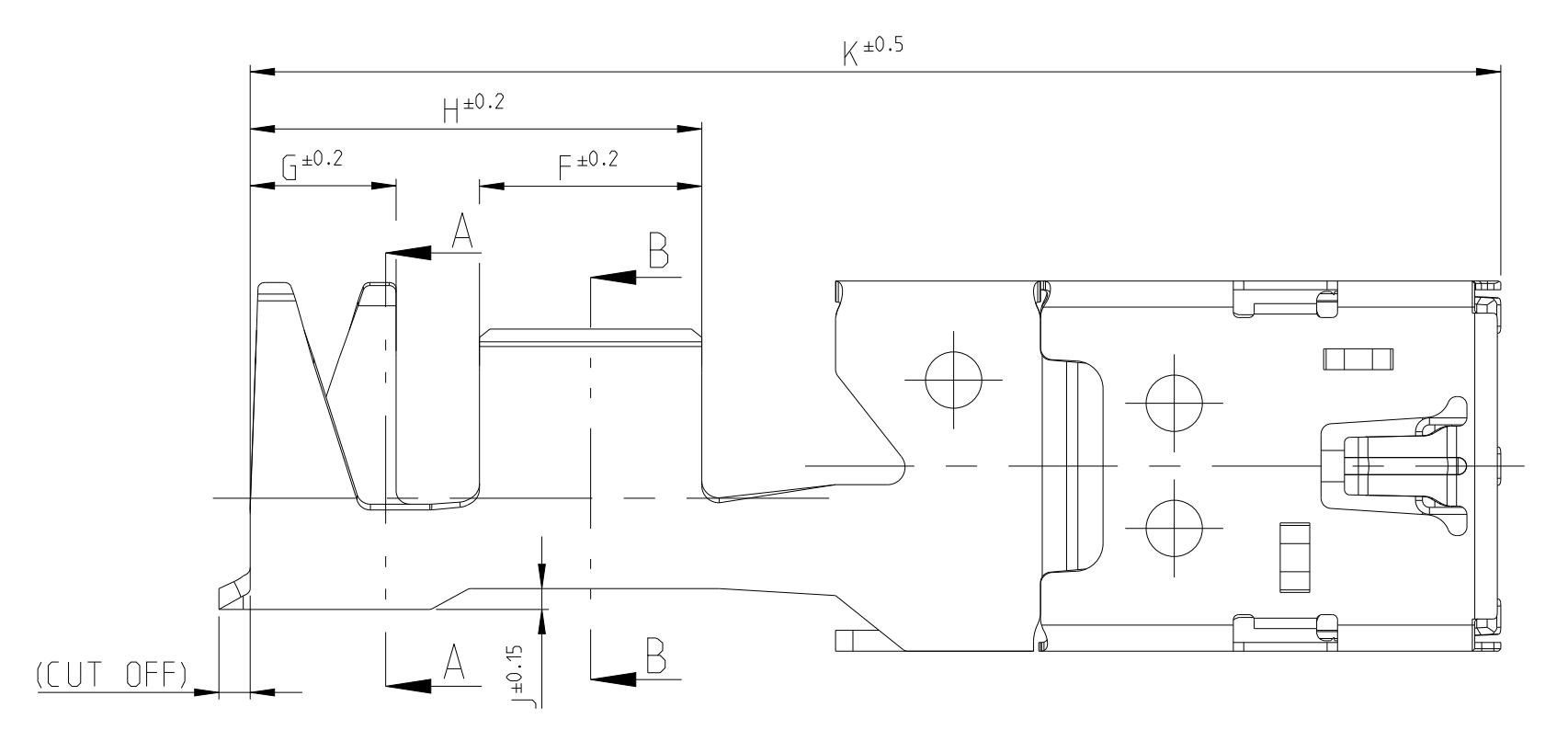
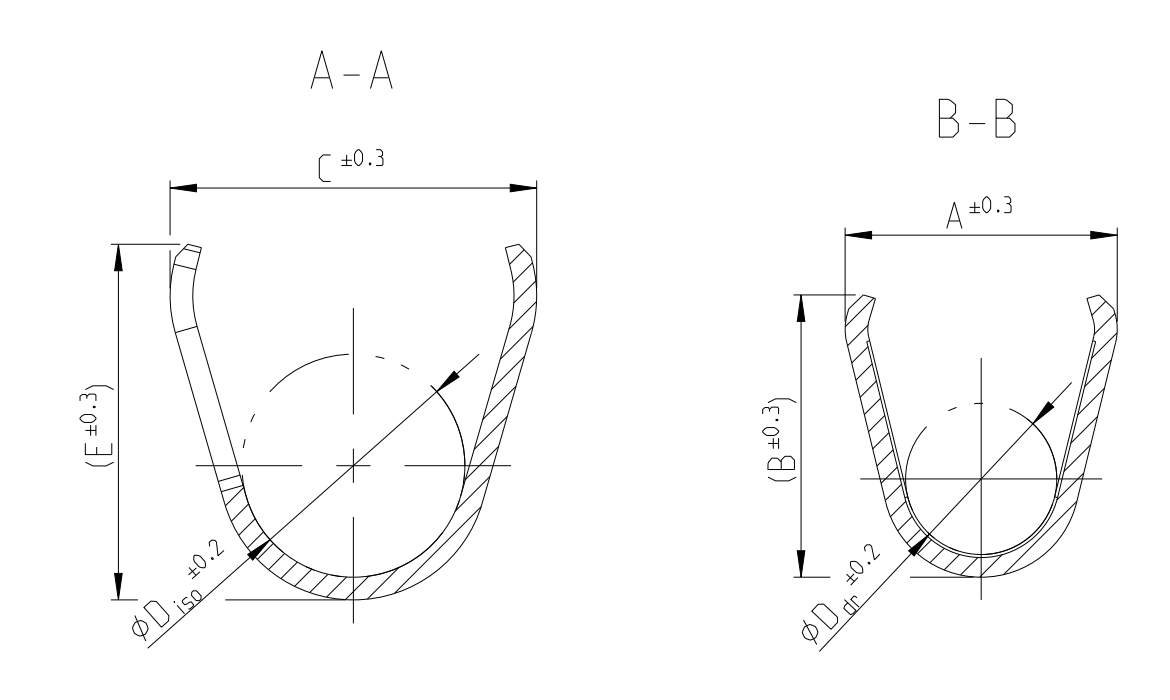
PN 2208765



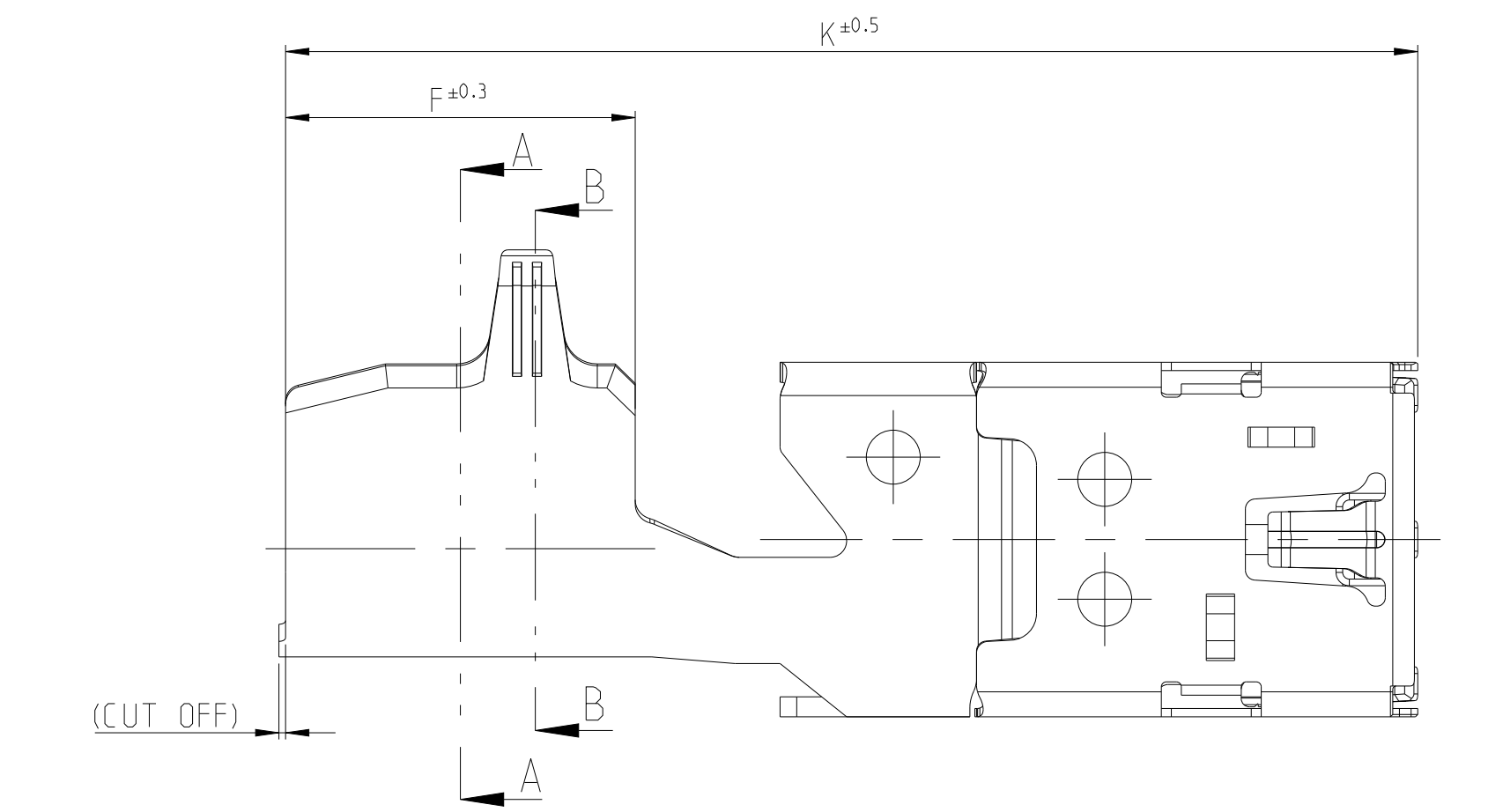
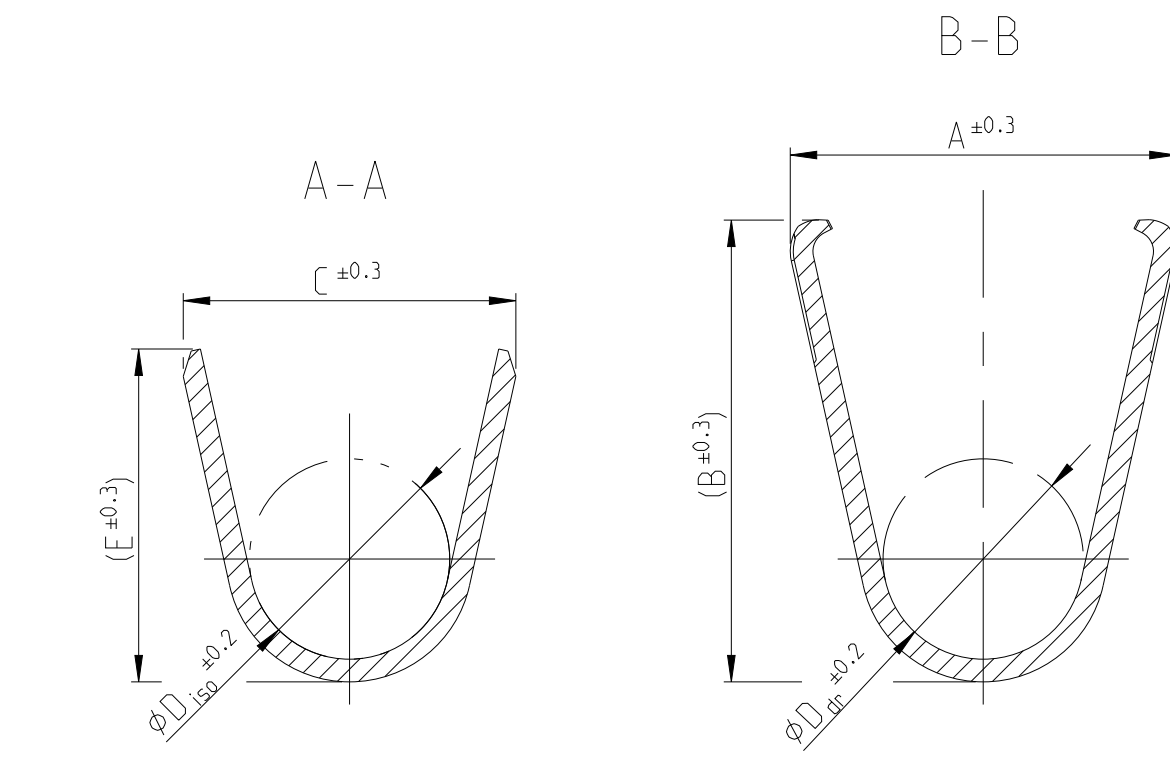
CODING / Kodierungen

- STANDARD CRIMP VERSION / ungedichtete Version -

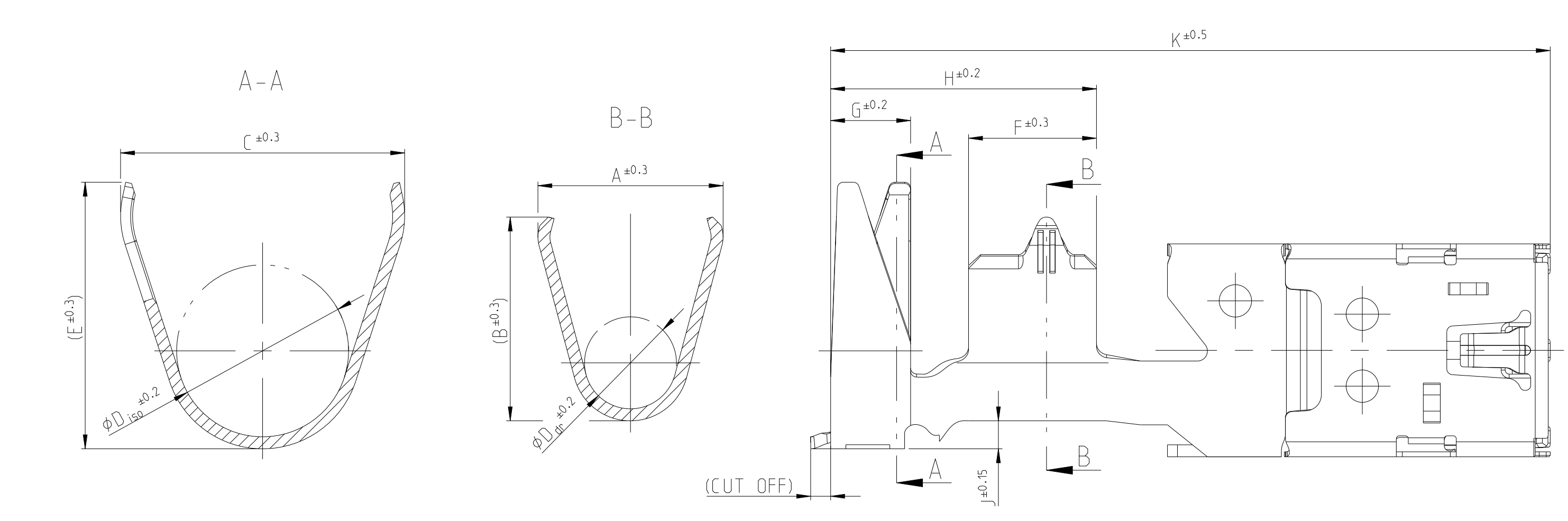
PN 2208762 AND PN 2208763



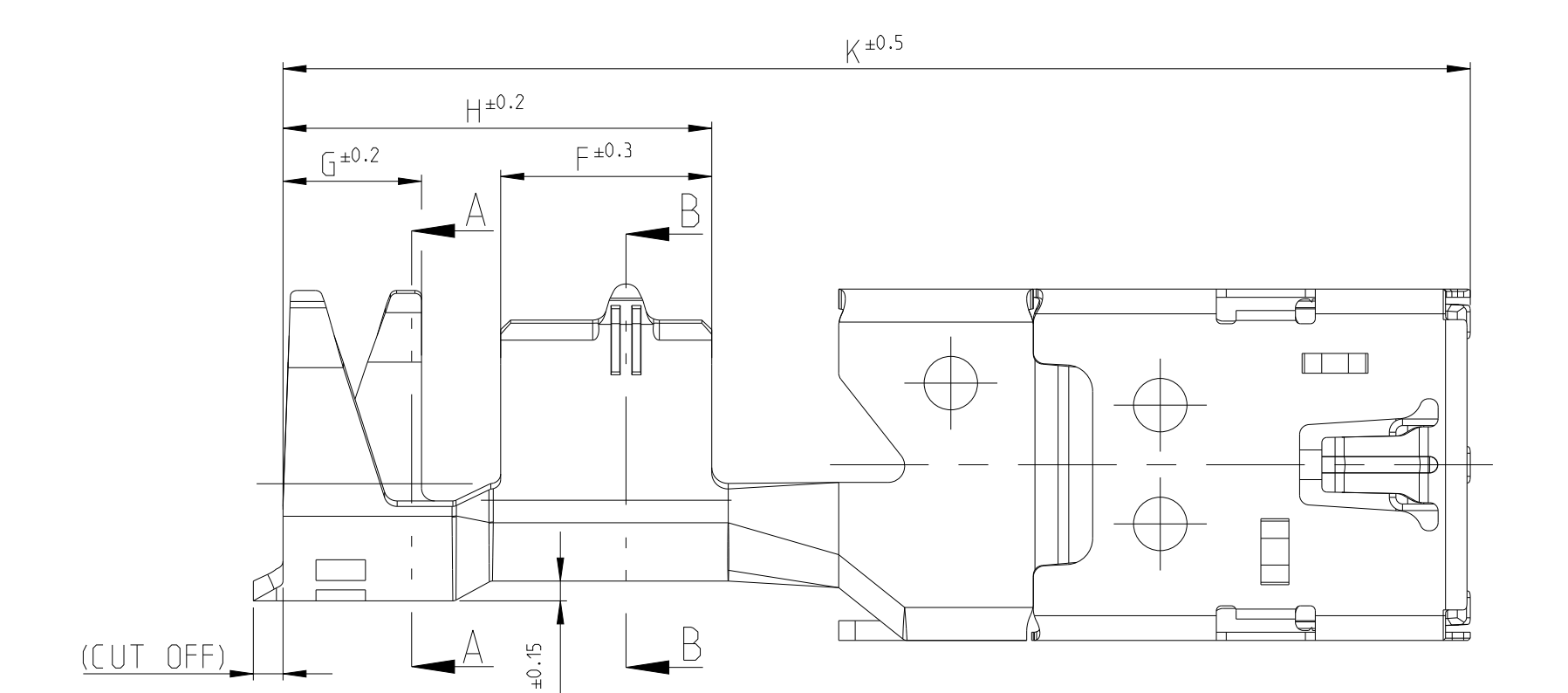
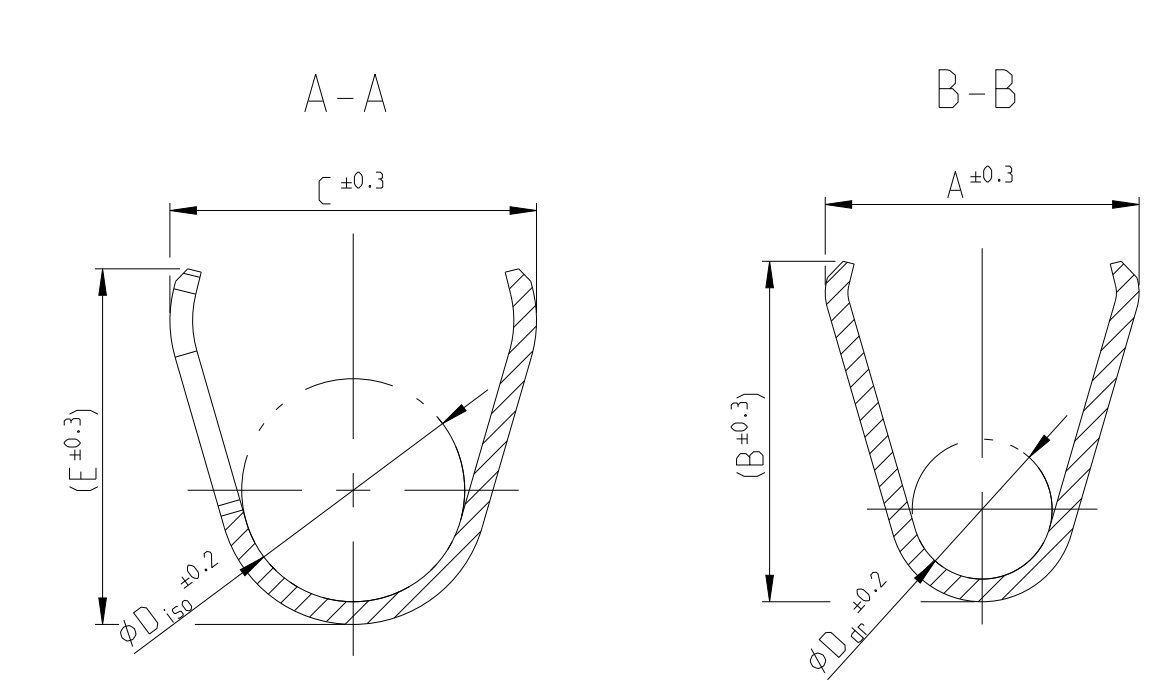
PN 2208764



PN 2208766 AND PN 2299675



PN 2411085



VERSION / Auslieferung	REV.	CODING 1	REV.	CODING 2	REV.	CODING 5	REV.	BODY Kontaktkoerper	SPRING Kontaktfeder	BODY Kontaktkoerper	SPRING Kontaktfeder	WIRE RANGE Drahtgroessenbereich (mm ²)	WIRE RANGE Drahtgroessenbereich (mm ²)	SEAL COLLAR DIA. Dichtungsbund-φ (mm)	SEALED: SEAL COLLAR φ IN mm	STANDARD CRIMP: WIRE INSULATION φ IN mm	A	B	D _{gr}	C	E	D _{iso}	F	G	H	J	K
SEALED	1-2299675-3	B	2-2299675-1	-	5-2299675-1	-	-	C14415 / C14410	C18080	3	5 6	-	10-12	SEAL COLLAR DIA. φ8.75 OR φ10.0	9.3	10.2	4.6	14.2	13.3	8.6	6.4	4	13.3	1.4	36		
	1-2208766-3	C	2-2208766-1	-	5-2208766-1	-	-	C14415 / C14410	C18080	3	5 6	-	4-6	SEAL COLLAR DIA. φ8.75 OR φ10.0	8.3	9	3.7	14.9	13	8.6	6.4	4	13.3	1.4	36		
	1-2208765-3	B	2-2208765-1	-	5-2208765-1	-	-	C14415 / C14410	C18080	3	5 6	-	2.5	SEAL COLLAR DIA. φ8.75 OR φ10.0	5.2	5.3	2.5	14.9	13.2	8.6	6	4	13.3	1.4	36		
STANDARD CRIMP	1-2208764-3	B	2-2208764-1	-	5-2208764-3	B	-	C14415 / C14410	C18080	3	5 6	12-16	10-16	φ8.3 max.	10.2	12.2	5.3	-	-	-	10.5	-	-	-	34		
	1-2411085-3	A	2-2411085-1	-	5-2411085-3	-	-	C14415 / C14410	C18080	3	5 6	-	6	φ4.0-6.5	8.3	9	3.7	9.7	9.4	5.9	6.4	4.2	13	0.6	36		
	1-2208763-3	-	2-2208763-1	-	5-2208763-3	B	-	C14415 / C14410	C18080	3	5 6	6-10	-	φ4.0-6.5	7.2	7.5	4	9.7	9.4	5.9	6.4	4.2	13	0.6	36		
	1-2208762-3	B	2-2208762-1	-	5-2208762-3	B	-	C14415 / C14410	C18080	3	5 6	2.5-4	2.5-4	φ2.7-3.7	5.2	5.3	2.5	6.4	6.1	3.6	6	3.8	12.7	0.4	36		

THIS DRAWING IS A CONTROLLED DOCUMENT. DIMENSIONING AND TOLERANCING PER GPS ISO STANDARDS.

DATE: 19MAY2014
DRAWN BY: G. Hillmann
CHECKED BY: S. Meier
DATE: 12AUG2014

TE Connectivity
Produktgruppenzeichnung
PRODUCT GROUP DRAWING
MCON 8 CONTACT

MATERIAL: SEE TABLE
TOLERANCING: SEE TABLE

Customer Drawing