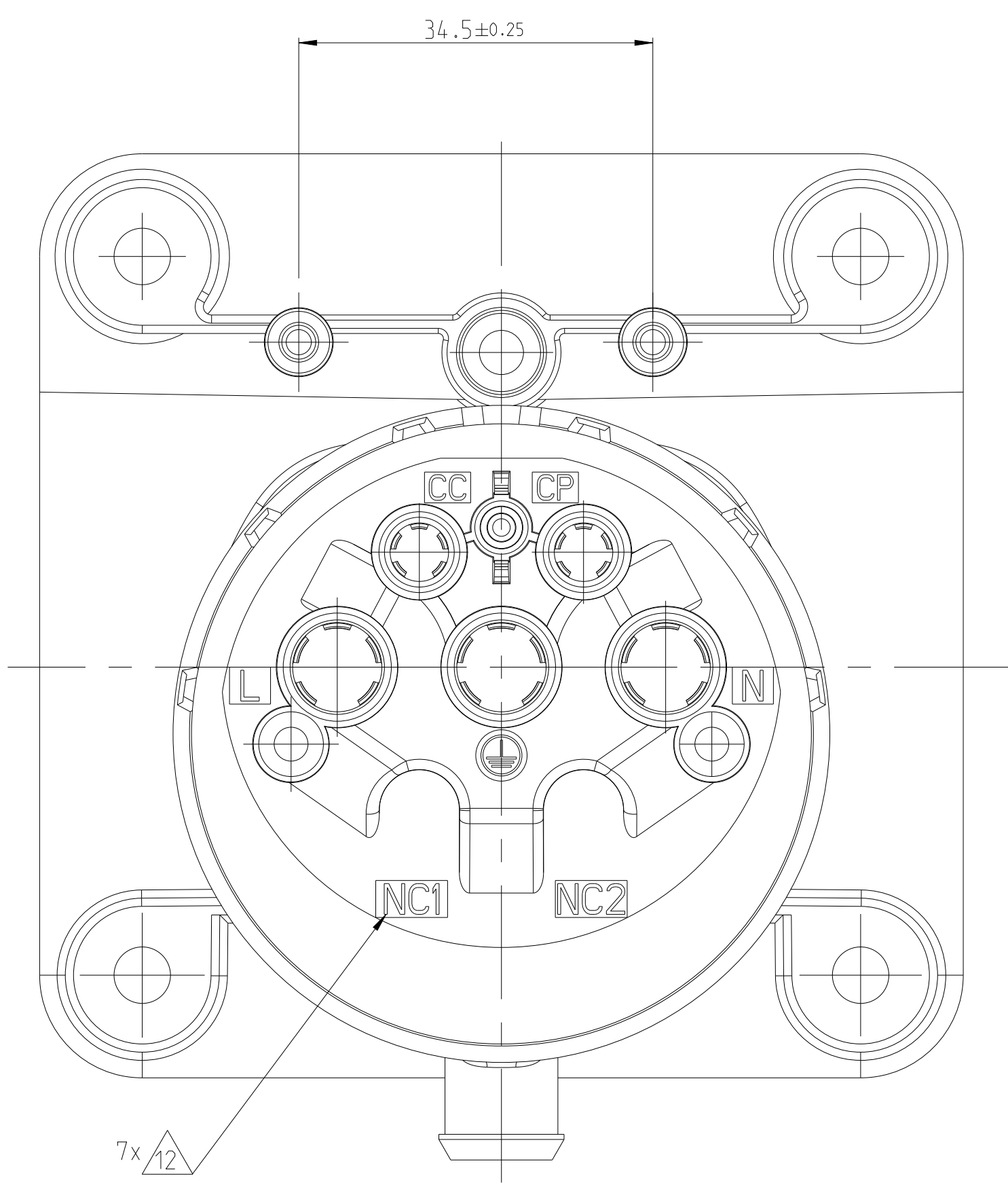
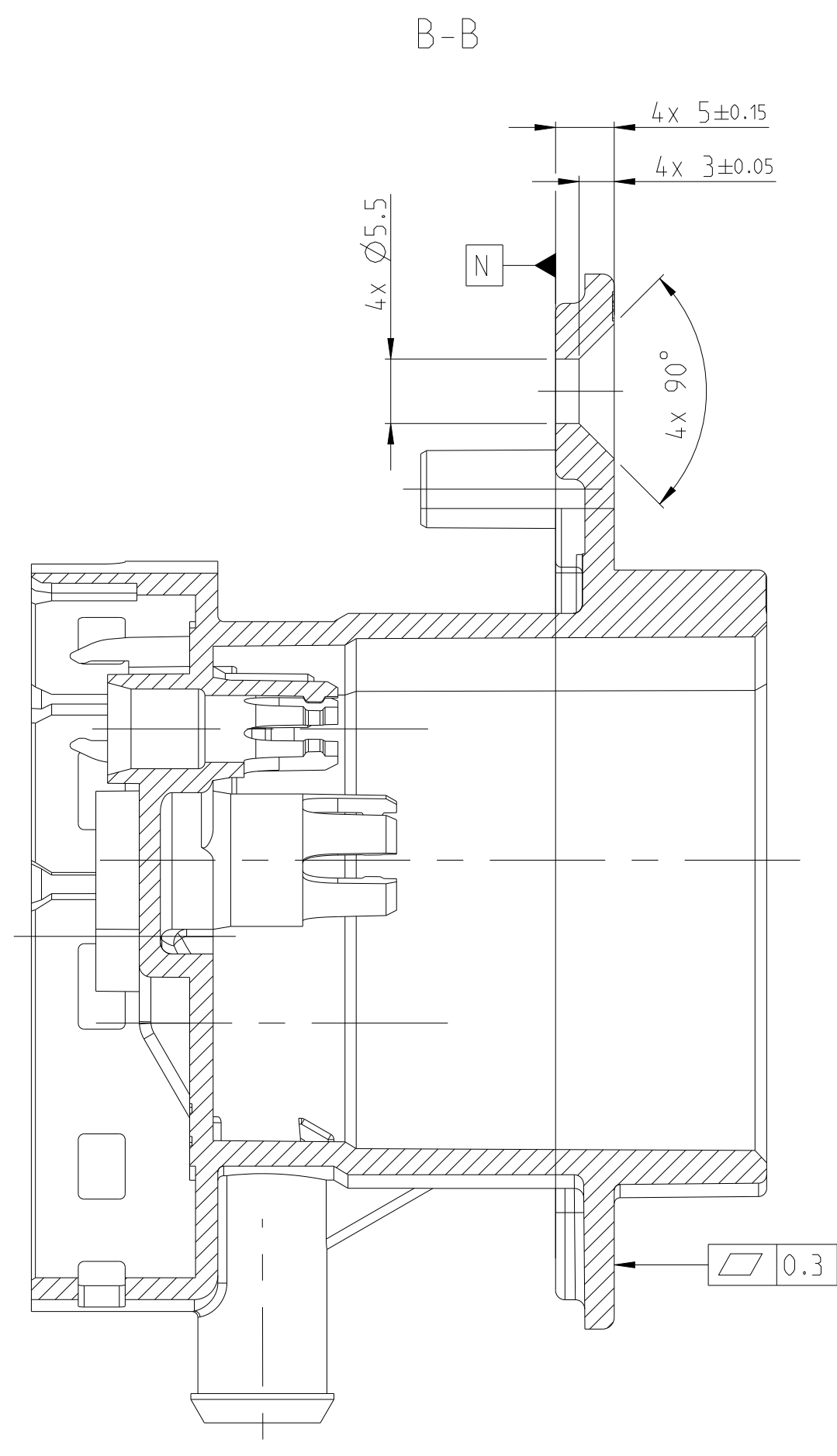
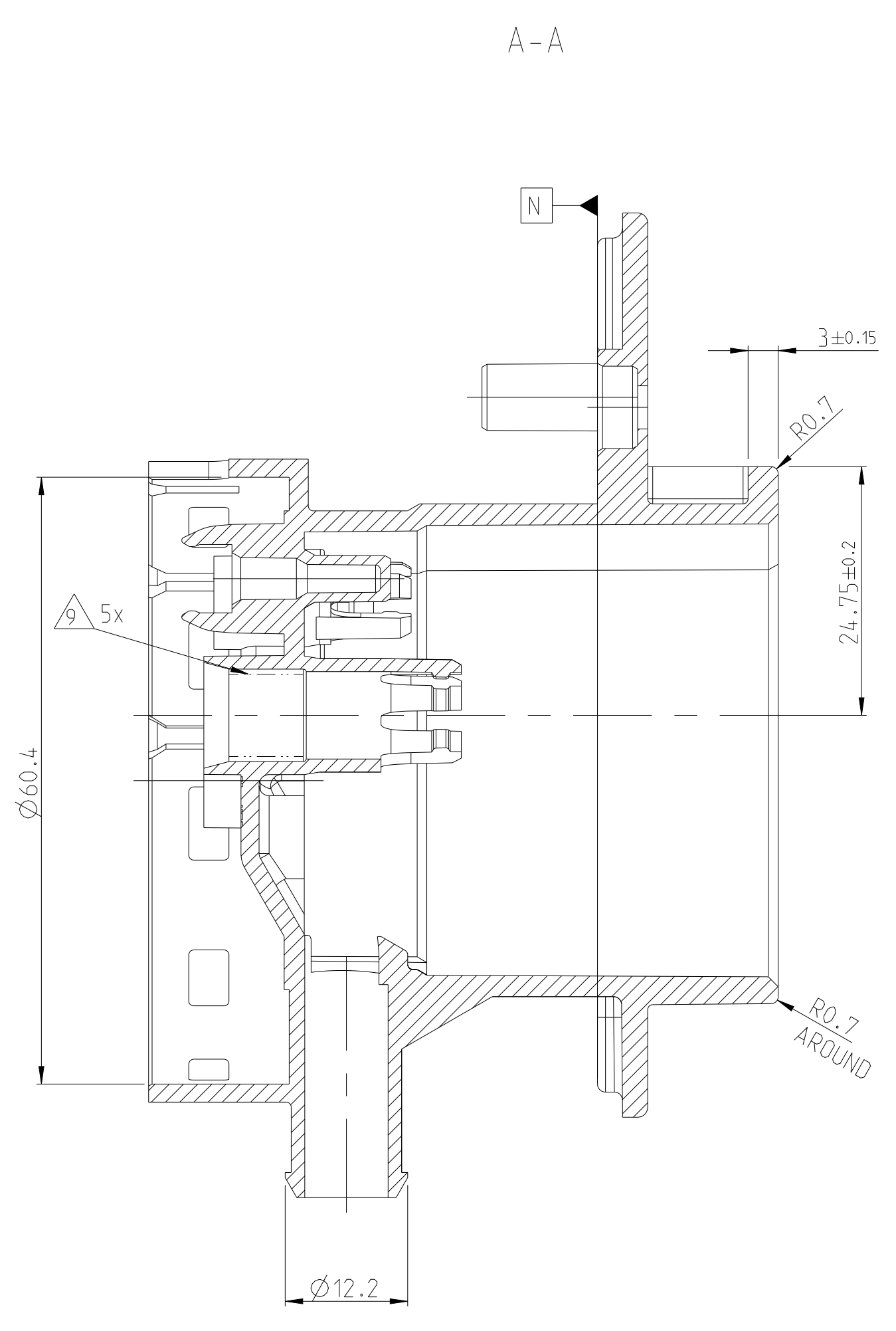
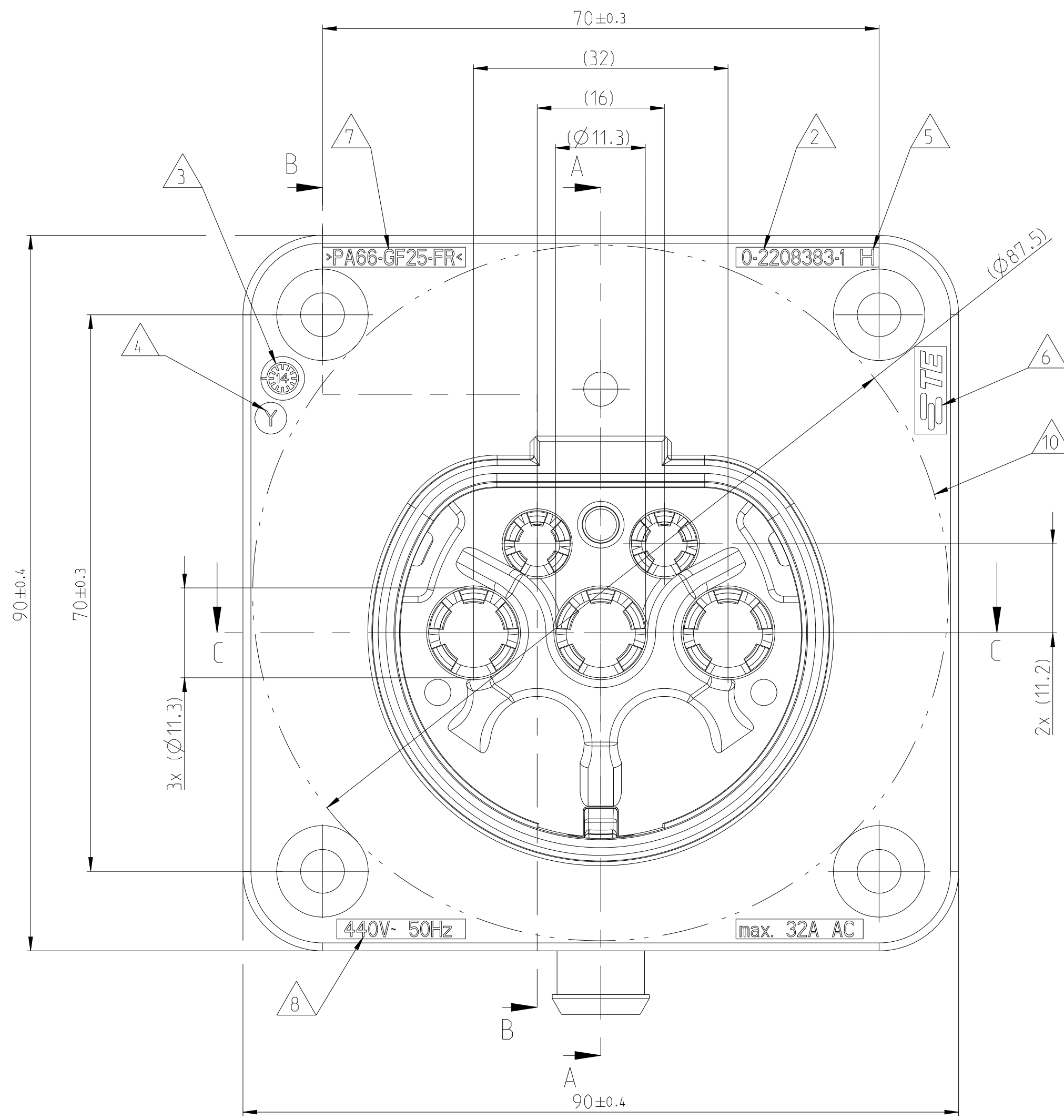
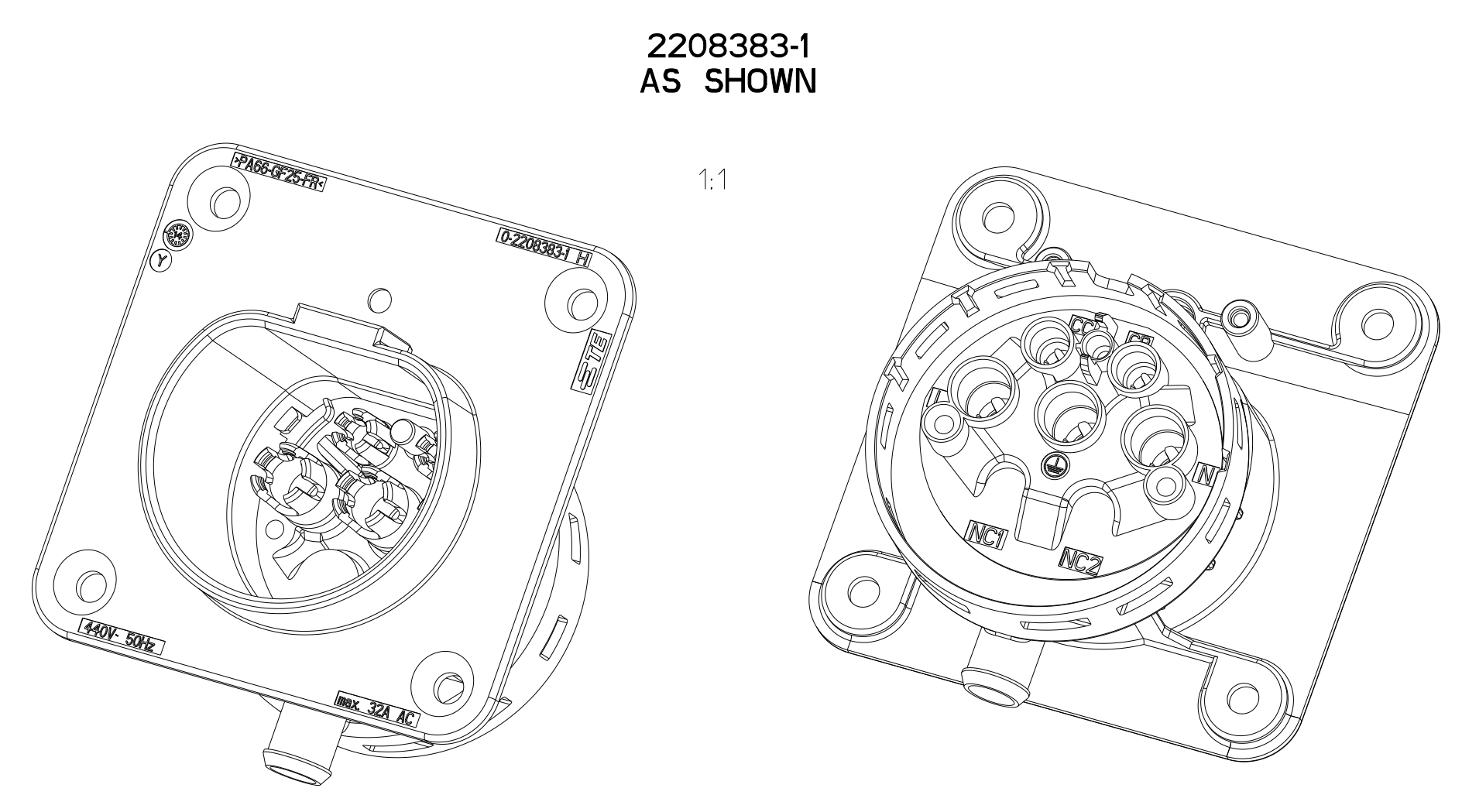
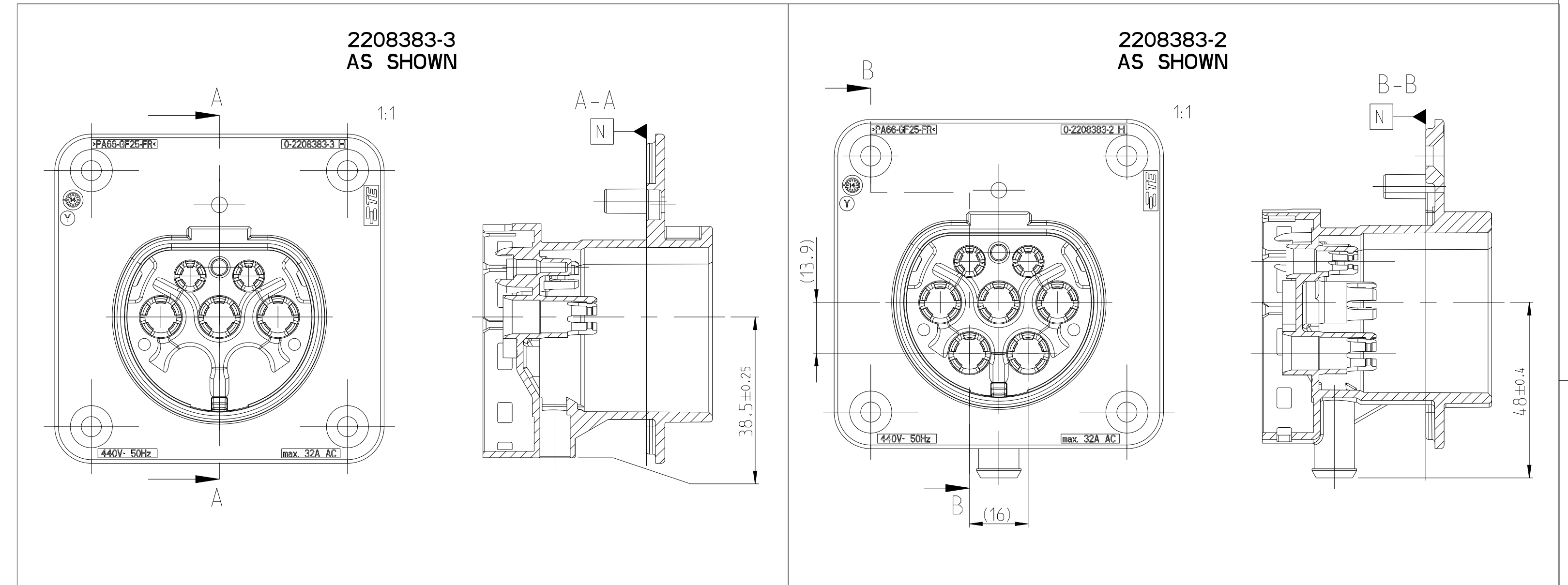
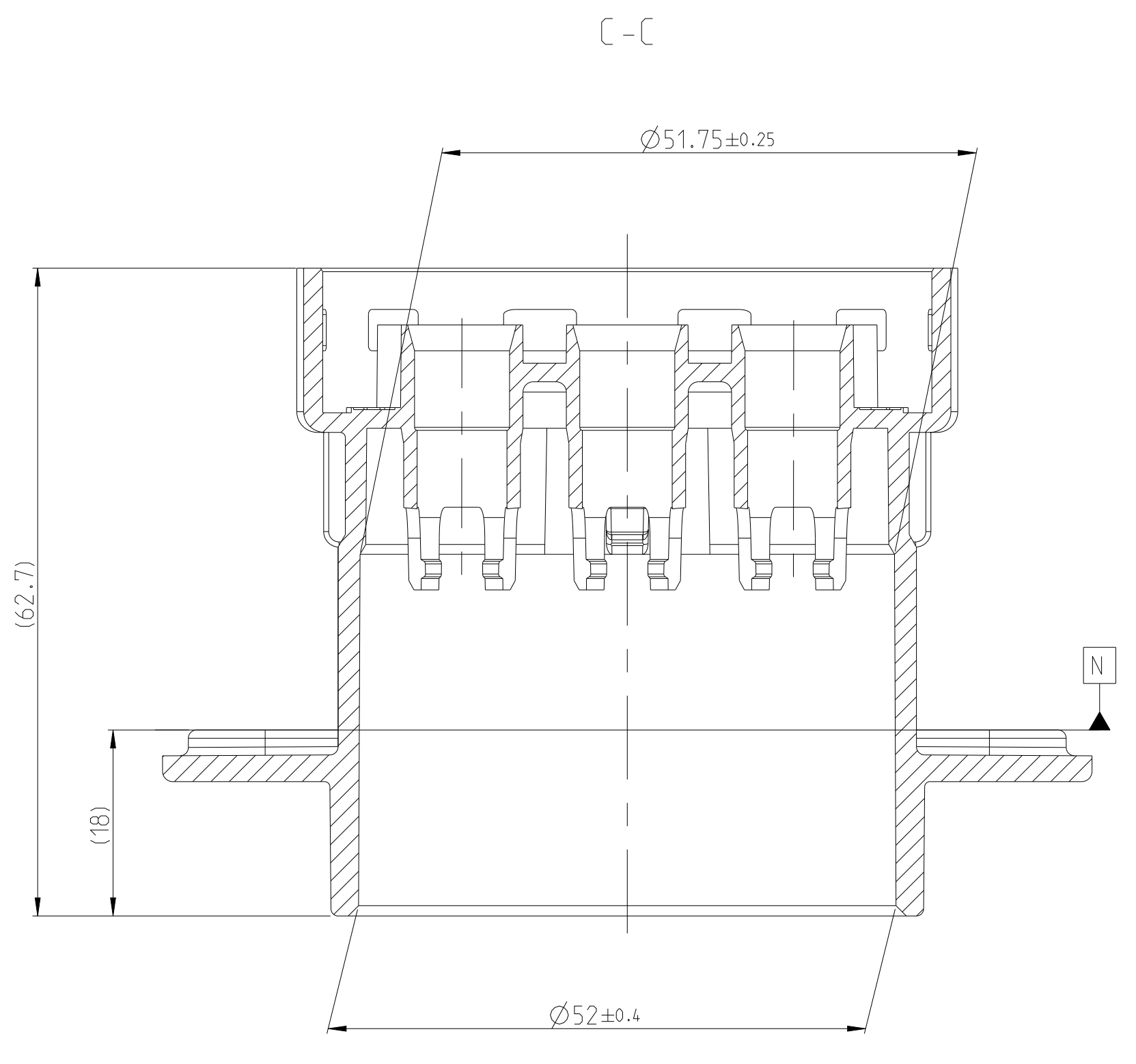


REV	DATE	DESCRIPTION	DATE	BY	APPD
A	20021204	NEW DRAWING		MVP	Pw1
B	19980206	RADIUS ADDED		BB	Pw1
B1	10MAR2021	2208383-2 VARIANT MADE ACTIVE. SPEC. ADDED		SGS	PST
B2	09MAY2025	NEW VARIANT 2208383-6 ADDED IN SHEET 2		DKC	DWE



- 1 IN CASE OF DISCREPANCIES BETWEEN GERMAN AND ENGLISH TEXT THE GERMAN TEXT IS BINDING  
 Im Falle von Unterschieden zwischen dem deutschen und dem englischen Text ist der deutsche Text verbindlich
- △ TE PART NUMBER SINGLE PART  
TE-Teilenummer Einzelteil
  - △ PRODUCTION DATE  
Produktionsdatum
  - △ CAVITY MARKING IF MULTIPLE CAVITY TOOL  
Nestmarkierung falls mehresstriges Werkzeug
  - △ PART REVISION  
Teilerreision
  - △ TE-TRADEMARK  
TE-Warenzeichen
  - △ MATERIAL MARKING ACC. TO VDA 260  
Materialkennzeichnung nach VDA 260
  - △ VOLTAGE, FREQUENCY  
Max. Spannung; Frequenz
  - △ SEALING SURFACES Rz1max 6.3µm  
NO SINK MARKS, NO WARPAGE, NO FLASH/BURR.  
NO EJECTOR, NO DAMAGE ALLOWED  
Dichtfläche: Rz1max 6.3µm  
Keine Einfallstellen, kein Verzug, keine Ausformschraegen.  
keine Auswerfer, keine Werkzeugtrennung und Beschädigung zulässig
  - △ VISIBLE SURFACE  
Sichtfläche
  - 11 BULK PACKAGING IN PLASTIC BAG AND CORRUGATED SHIPPING BOX  
Schuetting in Beutel und Versandkarton
  - △ IDENTIFICATION FOR CONTACTS AS SHOWN  
Kontaktkennzeichnung wie gezeigt

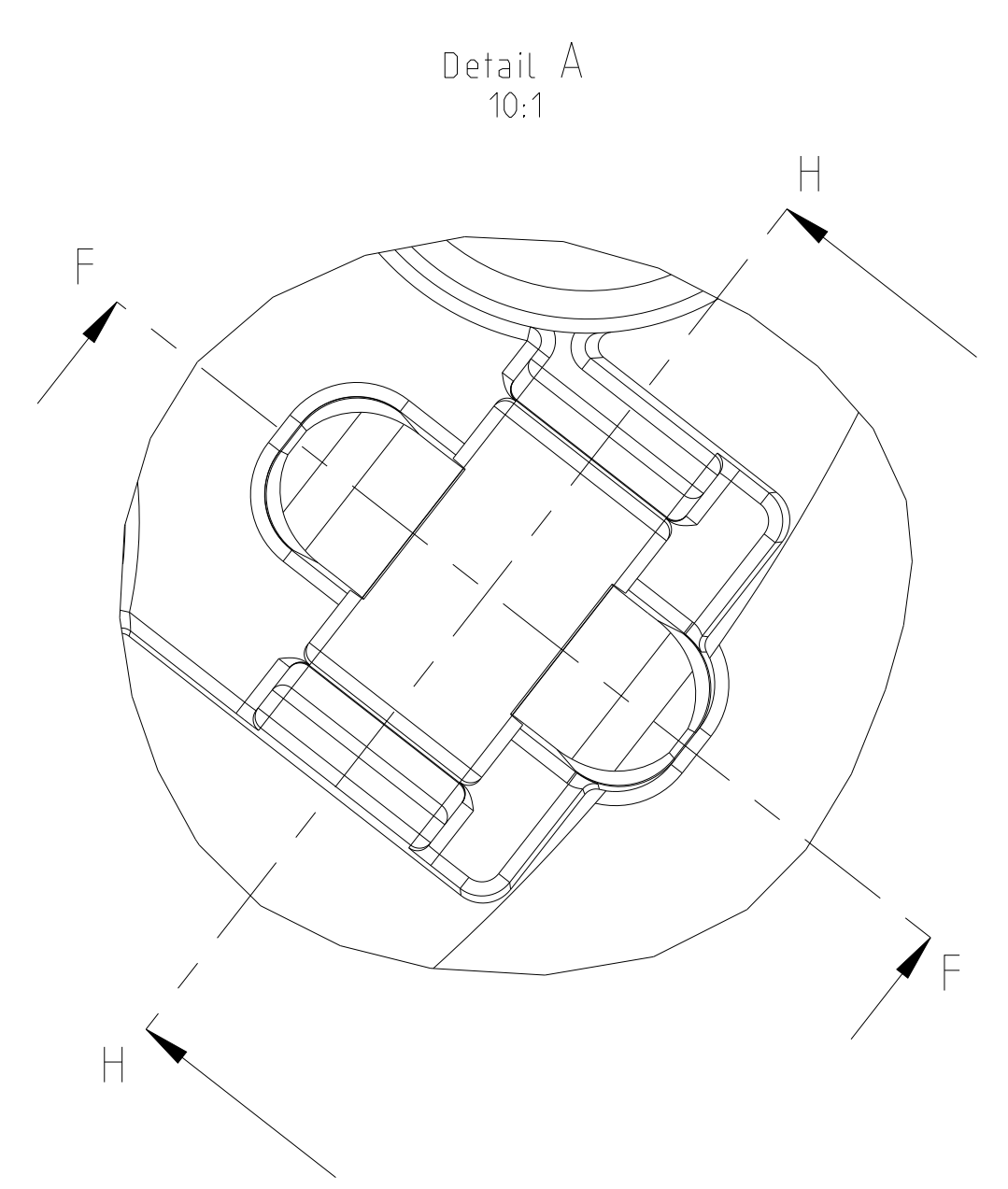
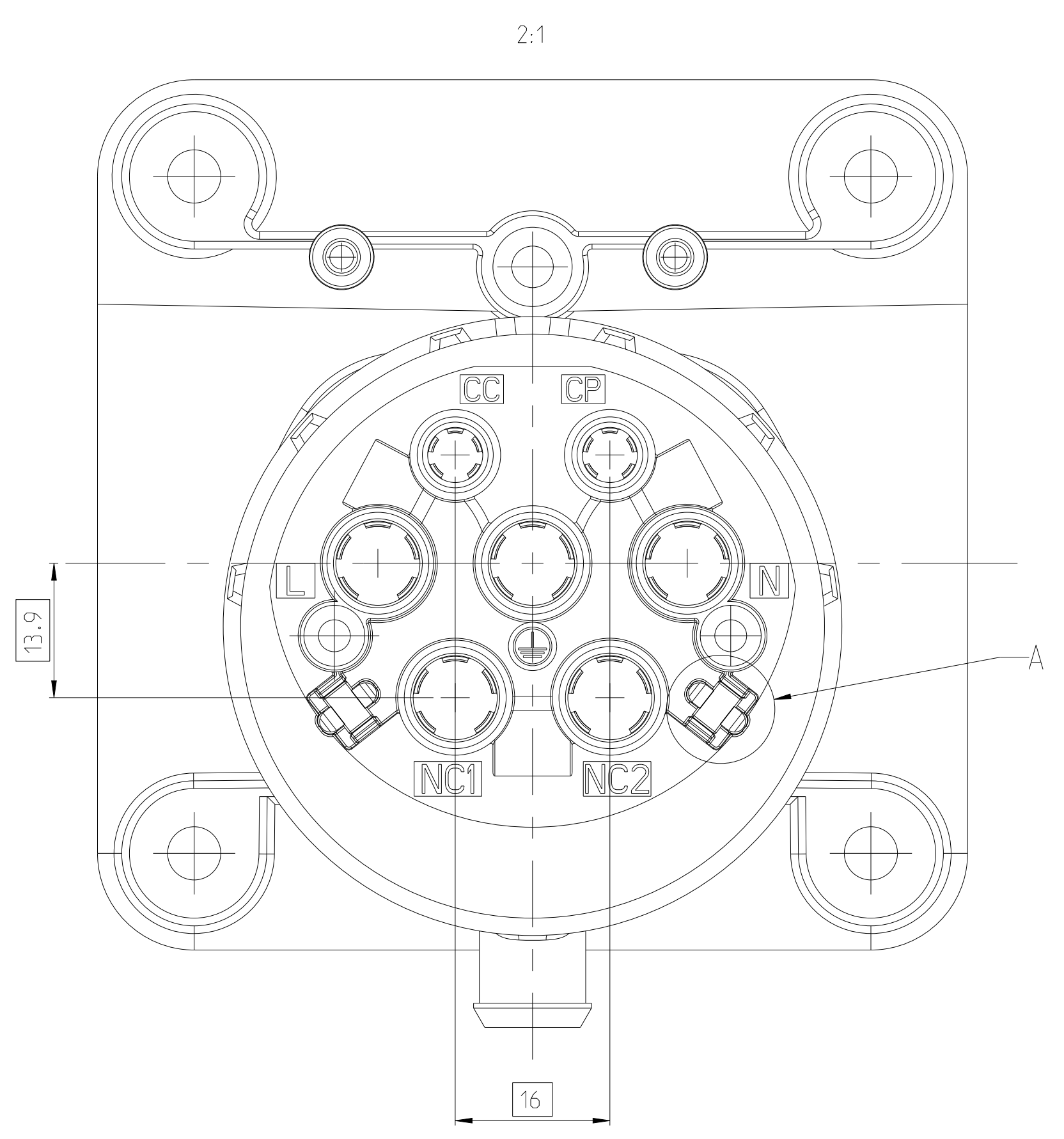
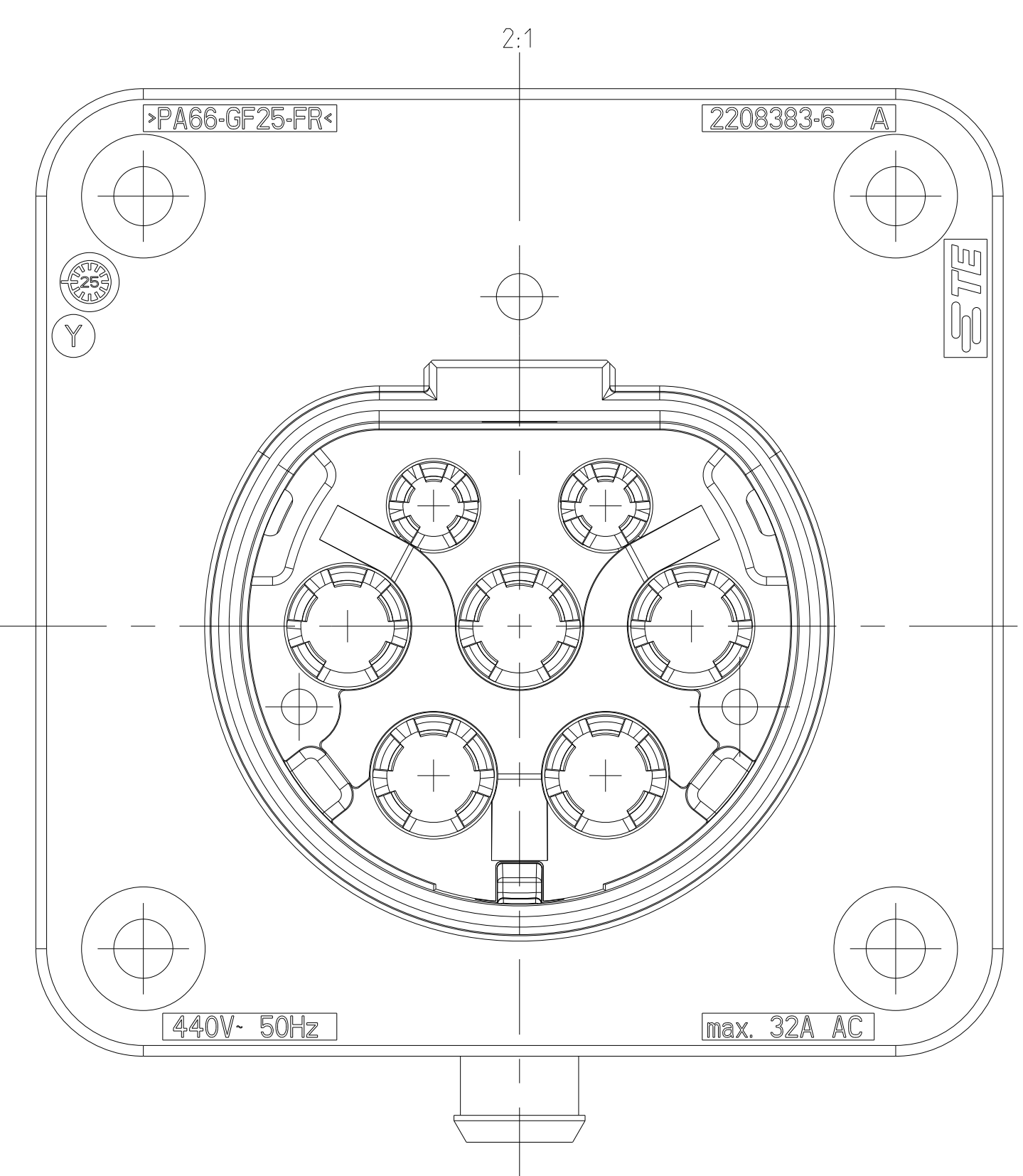
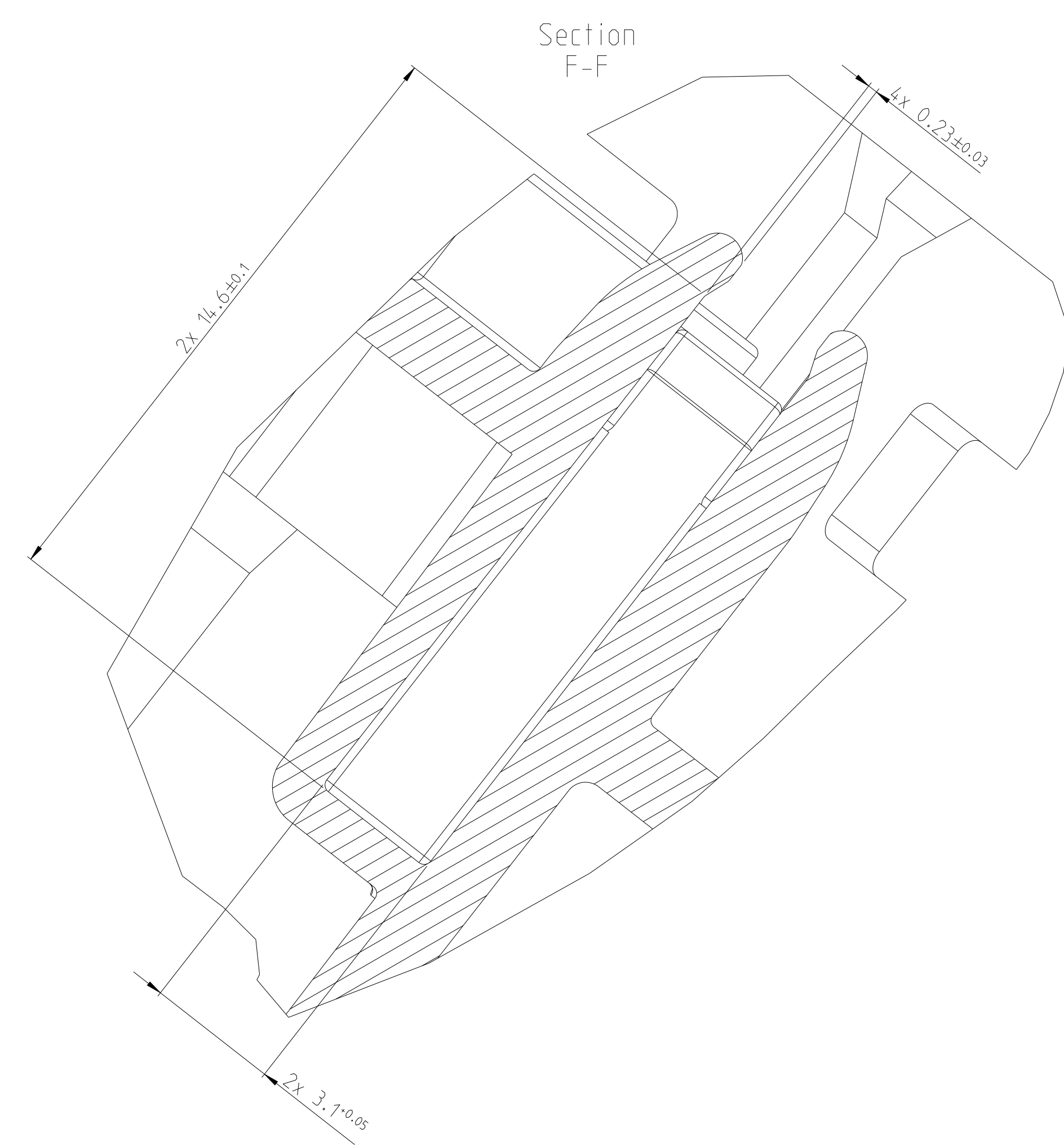
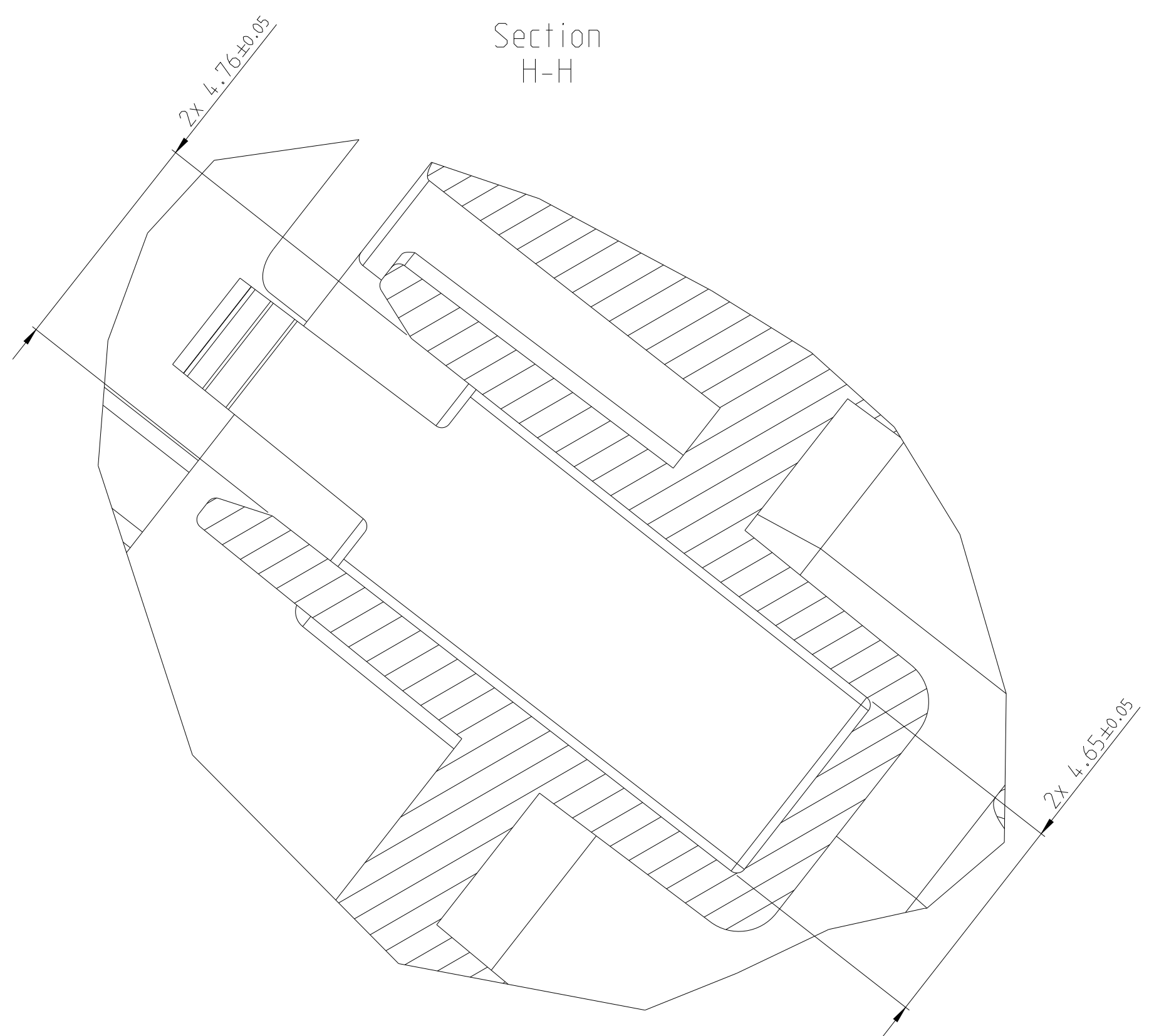


TE-PART-NO.	REV	DESCRIPTION	MATERIAL	WEIGHT [g]	COLOUR
2208383-6	A	7POS. MIXED, HSG. GB 7polig, Gehäuse, Ladedose (LONG PIPE)	PA66-GF25-FR	68.4	BLACK SCHWARZ RAL 9011
2208383-3	H	5POS. MIXED, HSG. GB 5polig, Gehäuse, Ladedose (SHORT PIPE)		66.1	
2208383-2	H	7POS. MIXED, HSG. GB 7polig, Gehäuse, Ladedose (LONG PIPE)		68.3	
2208383-1	H	5POS. MIXED, HSG. GB 5polig, Gehäuse, Ladedose (LONG PIPE)		66.8	

DATE	BY	APPD	SCALE	SHEET	TOTAL
20021204	MVP		1:1	1	2

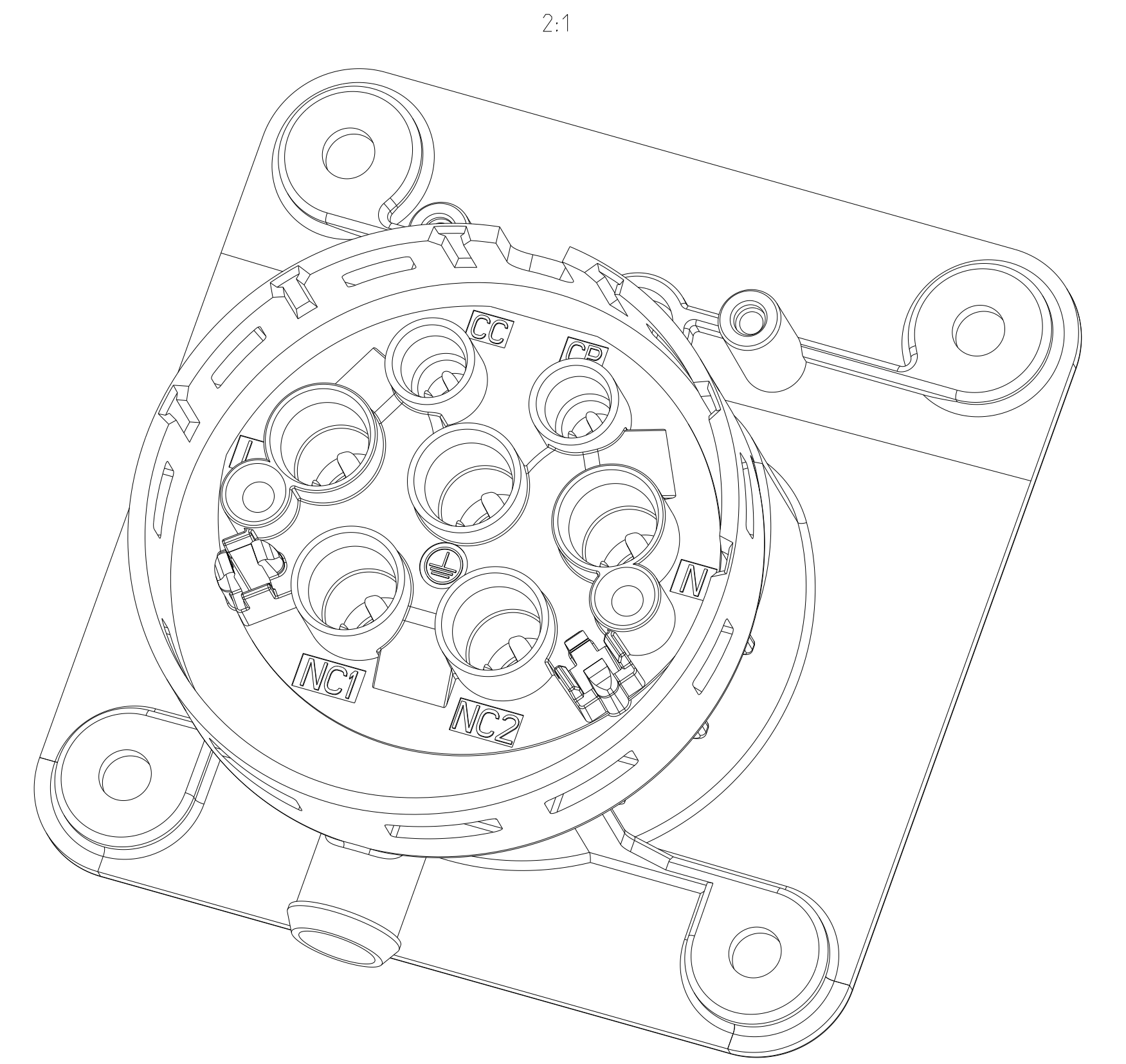
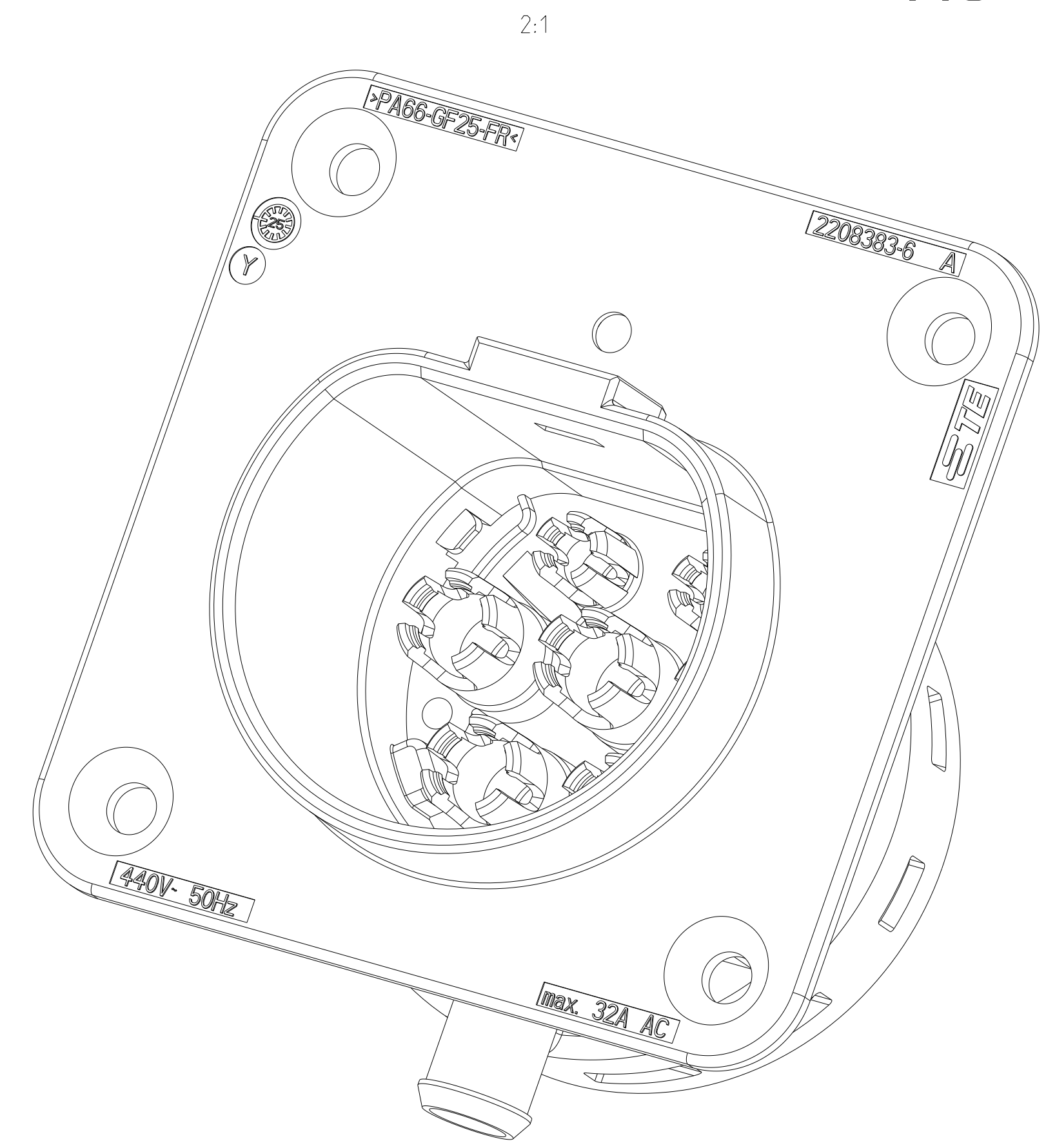
Customer Drawing

REVISIONS				
NO.	DATE	DESCRIPTION	BY	APP'D
-		SEE SHEET 1		



**2208383-6  
AS SHOWN**

REFER 2208383-1 FOR OTHER RELEVANT DIMENSIONS & VIEWS



DIESE ZEICHNUNG IST EIN KONTROLLIERTES DOKUMENT. BEMESSUNGEN UND TOLERANZEN GEMÄSS IEC 60336-1:2018				THIS DRAWING IS A CONTROLLED DOCUMENT. DIMENSIONS AND TOLERANCES PER IEC 60336-1:2018				DIPLOMA-UND UNIVERSITÄT DUISBURG ESSEN FACULTÄT FÜR INGENIEURWISSENSCHAFTEN LEHRGEBIET FÜR ELEKTROTECHNIK LEHRSTUHL FÜR ELEKTROTECHNIK				NAME: Maltevia PROJEKT: 210C T2014 PRODUKT: 210C T2014 PROZESS: 210C T2014 ANWENDUNG: 210C T2014		DATE: 2023-08-16 DRAWING NO: 2208383-6 SCALE: 2:1		SHEET: 2 OF 2 REV: B2	
MATERIAL: SEE TABLE				FINISH/BEARBEITUNG: SEE TABLE				Customer Drawing				SHEET: 2 OF 2		REV: B2			