

20

RELEASED FOR PUBLICATION

ALL RIGHTS RESERVED.

THIS DRAWING IS UNPUBLISHED.

COPYRIGHT 20

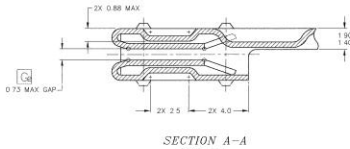
REVISIONS

P	LTR	DESCRIPTION	DATE	DWN	APVD
	A	new drawing	19AUG2013	SK	RH
	A1	SEE ECR-22-128415	02FEB2022	OS	RH

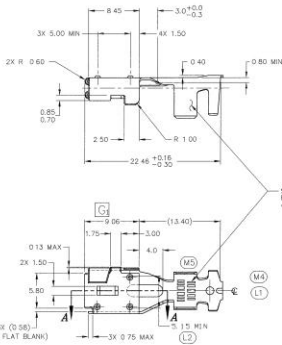
A1

2208343-1	(1)16+(1)18 (2)20	ALLOY 151	PRE TIN PLATED
2208343-2	14-16	ALLOY 151	PRE TIN PLATED
2208343-3	10-12	ALLOY 151	PRE TIN PLATED
TE ORDER NO.	WIRE CODE AWG	MATERIAL	FINISH

A1



SECTION A-A
SCALE: 1X1



WIRE CODE	REF. SAE	REF. METRIC
A	22, 24	.22, .35

- NOTES: UNLESS OTHERWISE SPECIFIED
- GENERAL TOLERANCE ONE PLACE DECIMAL ±0.3. GENERAL TOLERANCE TWO PLACE DECIMAL ±0.13
 - FOR ENGINEERING APPROVED SOURCE SEE ENGINEERING RELEASE
 - ANY CHANGE IN DESIGN, COMPOSITION OR PROCESSING (IF ACCEPTABLE) REQUIRES LEARN PRODUCTS DESIGN ENGINEERING APPROVAL PRIOR TO RECOMPOSITION
 - TERMINAL MUST CONFORM TO ES-F06B-14474-A AND ES-D04B-1283-A
 - THIS PART GAP MUST BE SIZED SO THAT THE FIRST INSERTION DOES NOT EXCEED 24N (0.4 LBS)
 - SC WHEN USING MAX. DRG. BLADE GAGE: 3.875 ±0.02 AND THE SIXTH REMOVAL SHALL NOT BE LESS THAN 4.0N (0.4 LBS) WHEN USING MIN. DRG. BLADE GAGE: 3.775 ±0.02
 - MATING PART - REFERENCE 0.825 ±0.005 x 6.30 ±0.10 TO BE USED WITH CAVITY # ES-F06B-14474-A, ES-F06B-14474-C, AND ES-F06B-14474-E
 - ☐ SYMBOL DENOTES GAGE REQUIREMENTS FOR MANUFACTURER
 - MATERIAL: ASTM B747, UNS C15100 H02 (DIEPLY ANNEALED)
THICKNESS: 0.361 MM ±0.013
TEMPER: 1/2 HARD (RHT)
TENSILE: 296-352 MPa
PLATING: PER ROHS-MFRS-B PRE-TIN PLATED WITH A THICKNESS OF 0.5 MICROMETERS MIN.
 - SC DENOTES SPC DIMENSIONS FOR PRIME SOURCE
 - SCORING FOR THE PURPOSE OF SETTING METAL IN ORDER TO FORM THE PART MAY NOT BE MORE THAN 50% OF METAL THICKNESS

EXCEPTIONS TO ES-E7E-B-14474-B GRIP DIMENSIONS										
SERRATION DETAIL	X	V	S	G	F	E	D	C	B	A
NO EXCEPTIONS										
USE VIEW Z FROM ES-F44B-14474-C	1.60	2.85	2.85	5.25	2.85	1.1	1.0	2.8	2.8	
NO EXCEPTIONS										
NO EXCEPTIONS										
NO EXCEPTIONS										

DATE	LET	REVISIONS	CC	MAN	CHK	APP
930315		RELEASE F4UB-14474-AA, BA, CA, DA AND EA COMPLETE NBRD-C-1222255-000	RS			
930316		RELEASE F6DB-14474-JA COMPLETE NBRD-C-1283916-007	RS			
930325	A1	REVISED NOTE #1 A1 REVISED NOTE #1 A2 WIRE CODE COLUMN TO CHART A3 WIRE CODE COLUMN TO CHART A4 WIRE CODE COLUMN TO CHART A5 WIRE CODE COLUMN TO CHART A6 WIRE CODE COLUMN TO CHART A7 WIRE CODE COLUMN TO CHART A8 WIRE CODE COLUMN TO CHART A9 WIRE CODE COLUMN TO CHART A10 WIRE CODE COLUMN TO CHART	RS			
940224	B1	REVISED NOTE #9 B1 REVISED NOTE #9 B2 REVISED NOTE #9 B3 REVISED NOTE #9 B4 REVISED NOTE #9 B5 REVISED NOTE #9 B6 REVISED NOTE #9 B7 REVISED NOTE #9 B8 REVISED NOTE #9 B9 REVISED NOTE #9 B10 REVISED NOTE #9	RS			
942010	T	RELEASE F4UB-14474-2A COMPLETE NBRD-C-1238956-008	RS			
942010	C1	3X 0.75 WAS 3X 0.75 NBRD-C-1238956-008	RS			
942010	D1	3X 0.75 WAS 0.71 NBRD-C-1238956-008	RS			
942010	E1	3X 3.00 MIN WAS 4X 5.40 NBRD-C-1238956-008	RS			
942010	F1	3X 0.75 WAS 3X 0.75 NBRD-C-1238956-008	RS			
942010	G1	3X 0.75 WAS 3X 0.75 NBRD-C-1238956-008	RS			
942010	H1	3X 0.75 WAS 3X 0.75 NBRD-C-1238956-008	RS			
942010	I1	3X 0.75 WAS 3X 0.75 NBRD-C-1238956-008	RS			
942010	J1	3X 0.75 WAS 3X 0.75 NBRD-C-1238956-008	RS			
942010	K1	3X 0.75 WAS 3X 0.75 NBRD-C-1238956-008	RS			
942010	L1	3X 0.75 WAS 3X 0.75 NBRD-C-1238956-008	RS			
942010	M1	3X 0.75 WAS 3X 0.75 NBRD-C-1238956-008	RS			
942010	N1	3X 0.75 WAS 3X 0.75 NBRD-C-1238956-008	RS			
942010	O1	3X 0.75 WAS 3X 0.75 NBRD-C-1238956-008	RS			
942010	P1	3X 0.75 WAS 3X 0.75 NBRD-C-1238956-008	RS			
942010	Q1	3X 0.75 WAS 3X 0.75 NBRD-C-1238956-008	RS			
942010	R1	3X 0.75 WAS 3X 0.75 NBRD-C-1238956-008	RS			
942010	S1	3X 0.75 WAS 3X 0.75 NBRD-C-1238956-008	RS			
942010	T1	3X 0.75 WAS 3X 0.75 NBRD-C-1238956-008	RS			
942010	U1	3X 0.75 WAS 3X 0.75 NBRD-C-1238956-008	RS			
942010	V1	3X 0.75 WAS 3X 0.75 NBRD-C-1238956-008	RS			
942010	W1	3X 0.75 WAS 3X 0.75 NBRD-C-1238956-008	RS			
942010	X1	3X 0.75 WAS 3X 0.75 NBRD-C-1238956-008	RS			
942010	Y1	3X 0.75 WAS 3X 0.75 NBRD-C-1238956-008	RS			
942010	Z1	3X 0.75 WAS 3X 0.75 NBRD-C-1238956-008	RS			

DIMENSIONS:	DWN	19AUG2013	MATERIAL	FINISH
mm	S.K.ähny			
TOLERANCES UNLESS OTHERWISE SPECIFIED:	CHK	20AUG2013	TE Connectivity	
0 PLC ±	APVD		NAME Terminal, 6,3mm	
1 PLC ±			APPLICATION SPEC	
2 PLC ±			SIZE	
3 PLC ±			CAGE CODE	
4 PLC ±			DRAWING NO	
ANGLES ±			RESTRICTED TO	
	WEIGHT		A 4	C=2208343
	Customer Drawing		SCALE	SHEET 1 OF 1 REV A1