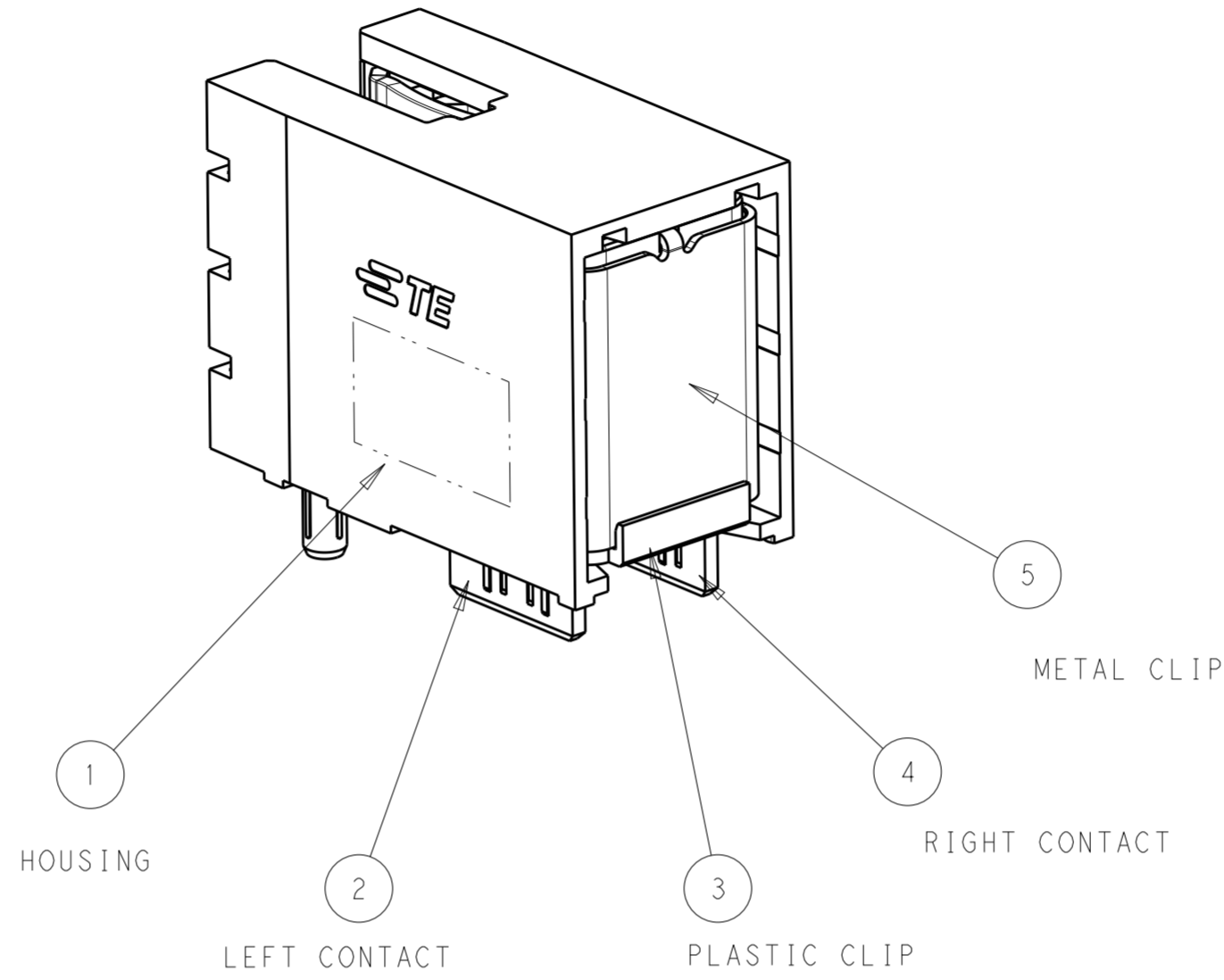
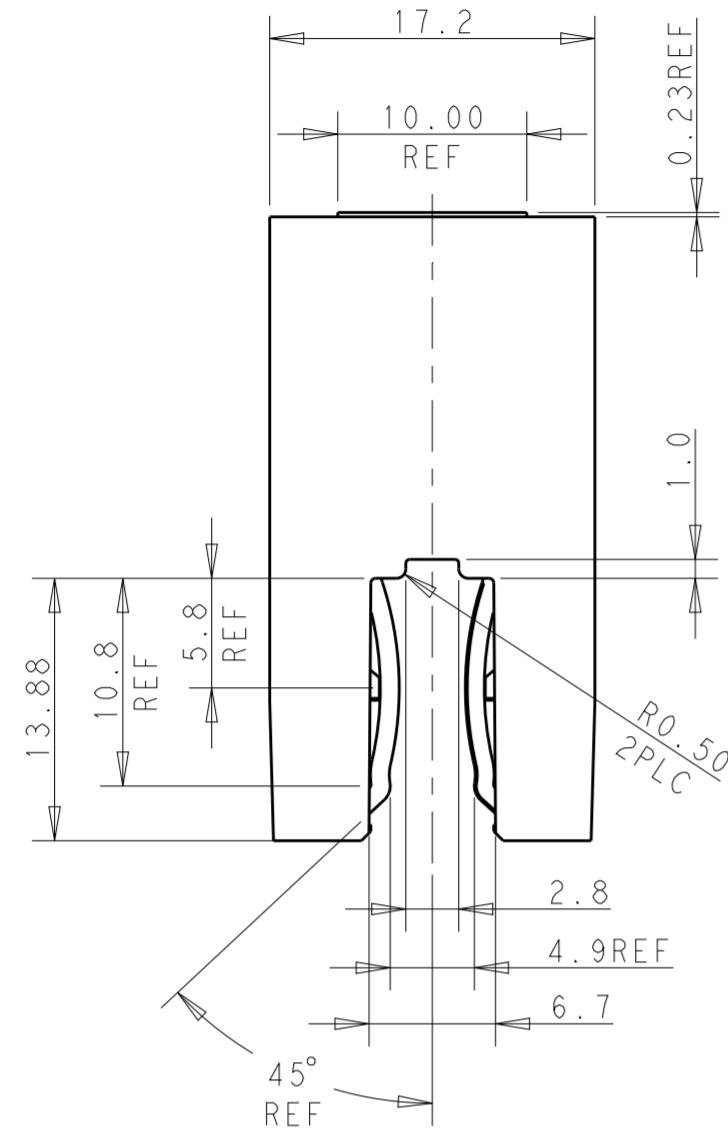
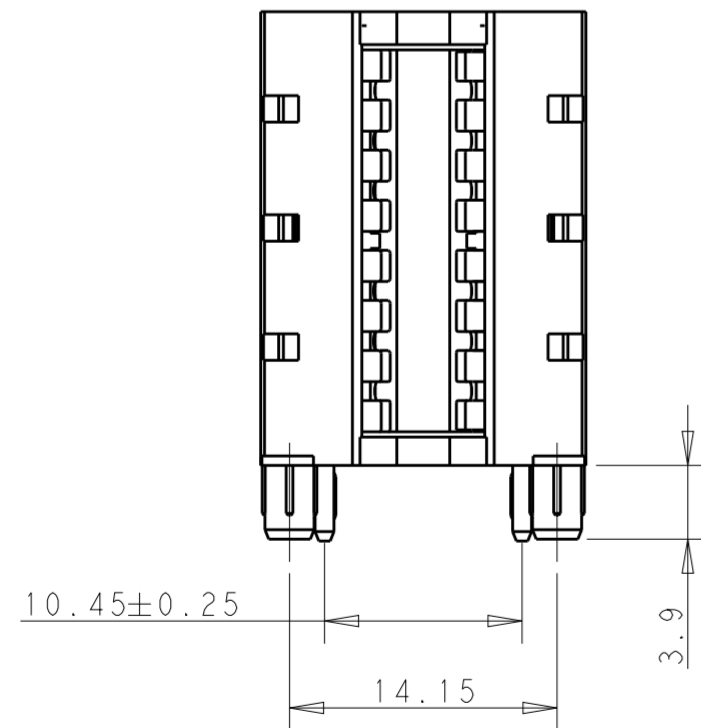


THIS DRAWING IS UNPUBLISHED. RELEASED FOR PUBLICATION
 © COPYRIGHT - TE CONNECTIVITY ALL RIGHTS RESERVED.

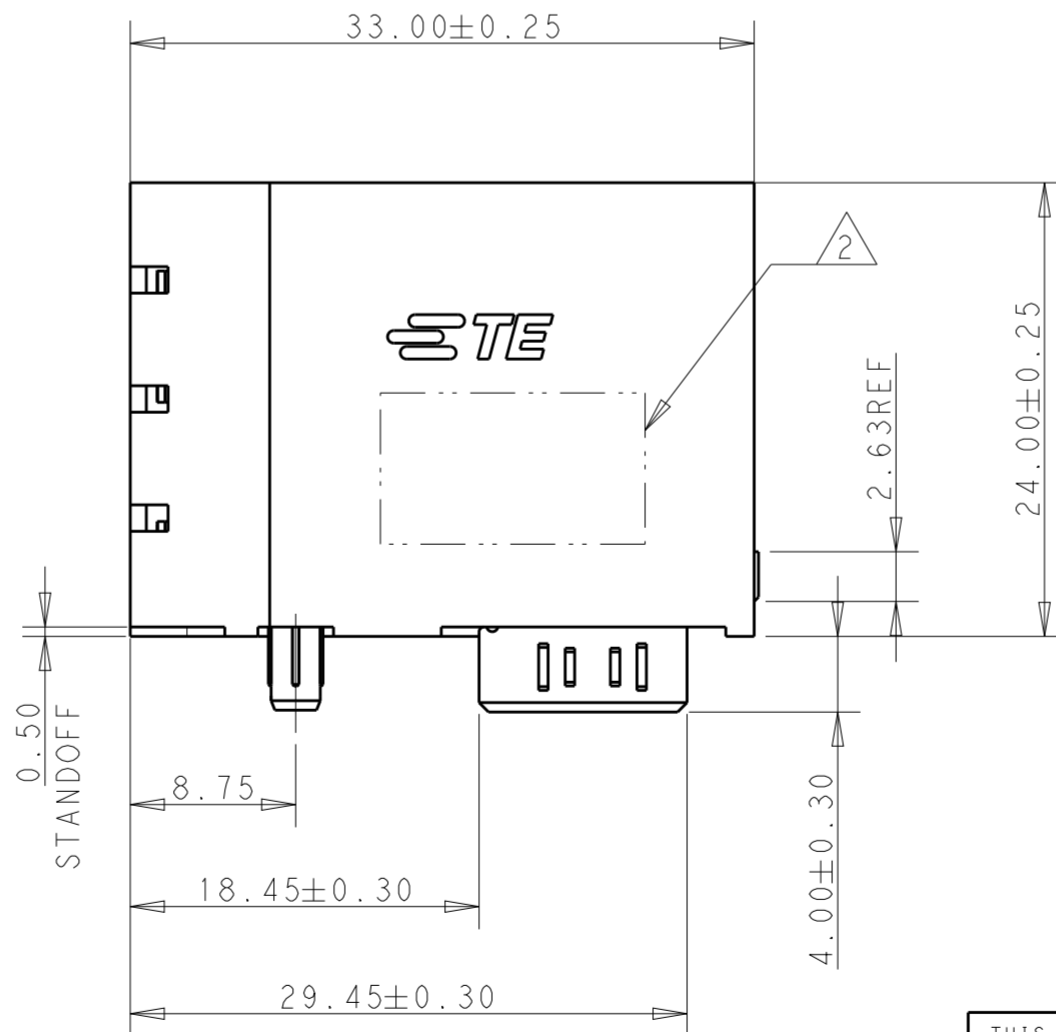
LOC	DIST	REVISIONS					
EC	00	P	LTR	DESCRIPTION	DATE	DWN	APVD
		1		INITIAL PROPOSAL DESIGN	14AUG2018	ML	SZ
		A		DRAWING RELEASE	27JUL2019	ML	SZ



- NOTES UNLESS OTHERWISE SPECIFIED:
- MATERIAL:
HOUSING-THERMOPLASTIC GLASS PREINFORCED,
COLOR: BLACK, UL94 V-0
CONTACT-HIGH CONDUCTIVITY COPPER ALLOY
 - AREA FOR DATE CODE AND TE P/N.
 - FINISH:
CONTACT AREA - NOBLE METAL OVER MATTE NICKEL
SOLDERING TAIL - MATTE TIN OVER MATTE NICKEL.
 - SURFACE ROUGHNESS IN CONTACT AREA: Ra 1.6um MAX.
 - RECOMMENDED MATING BUSBAR BOARD:
MATERIAL: COPPER ALLOY C10100/C10200/C11000,
PLATING: 0.76 OR 0.38um MIN. GOLD PLATING OVER
1.27~7.62um MATTE NICKEL UNDERPLATED ON COPPER SURFACE.
DETAIL SPECIFICATION PLEASE REFER TO SHEET 2.
 - CROWN CLIP JUNIOR HIGH CURRENT POWER CONNECTOR
MEET PIP REFLOW AND WAVING SOLDERING PROCESS.
THE RECOMMENDED PCB LAYOUT FOR PIP REFLOW SOLDERING
PLEASE REFER TO THE SHEET 2.



REFERENCE PRODUCT VIEW
P/N: 2204900-1

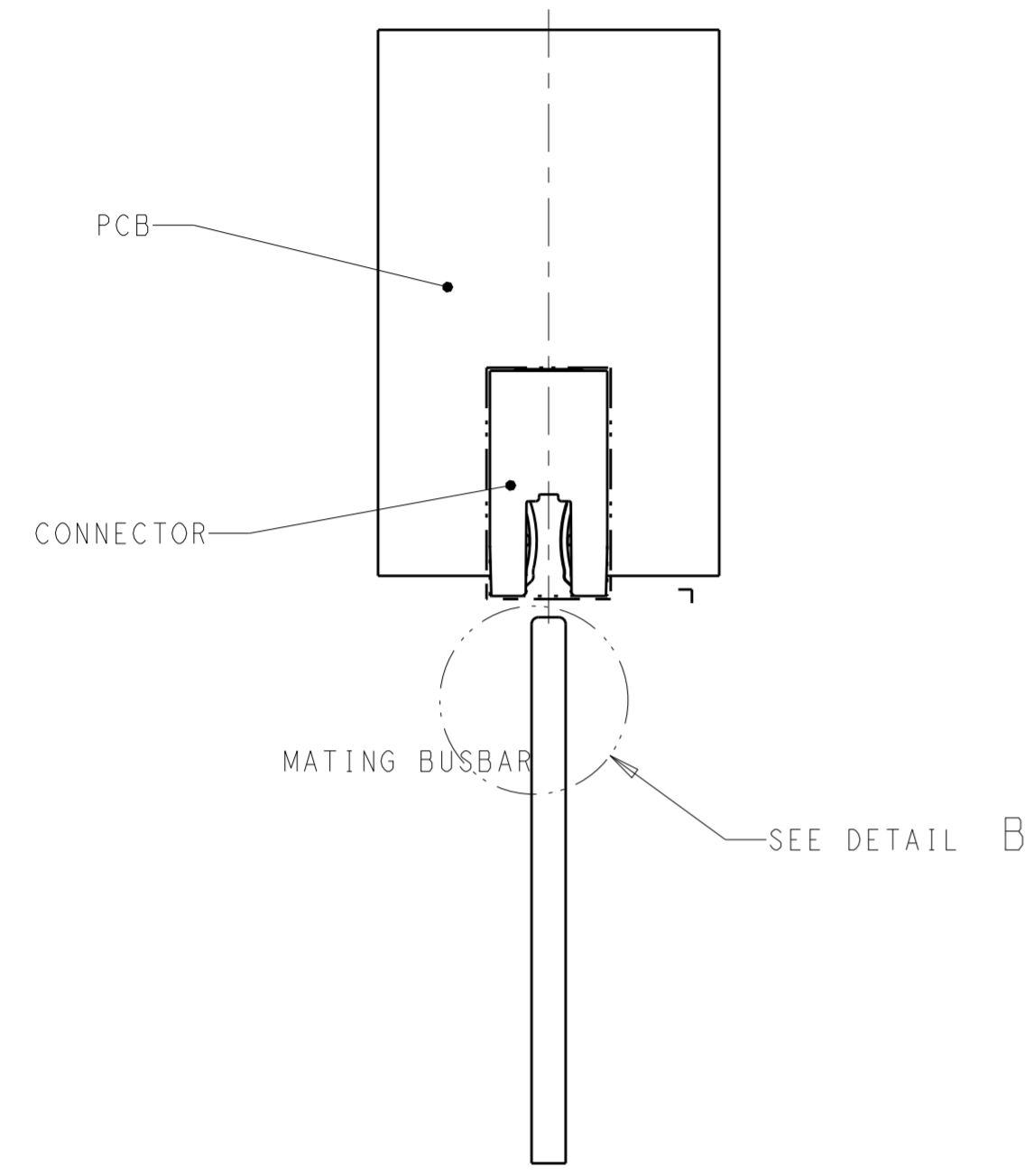


2204900-1	DUAL CROWN CLIP JUNIOR CONNECTOR, HIGH CURRENT	1
PART NUMBER	DESCRIPTION	ITEM

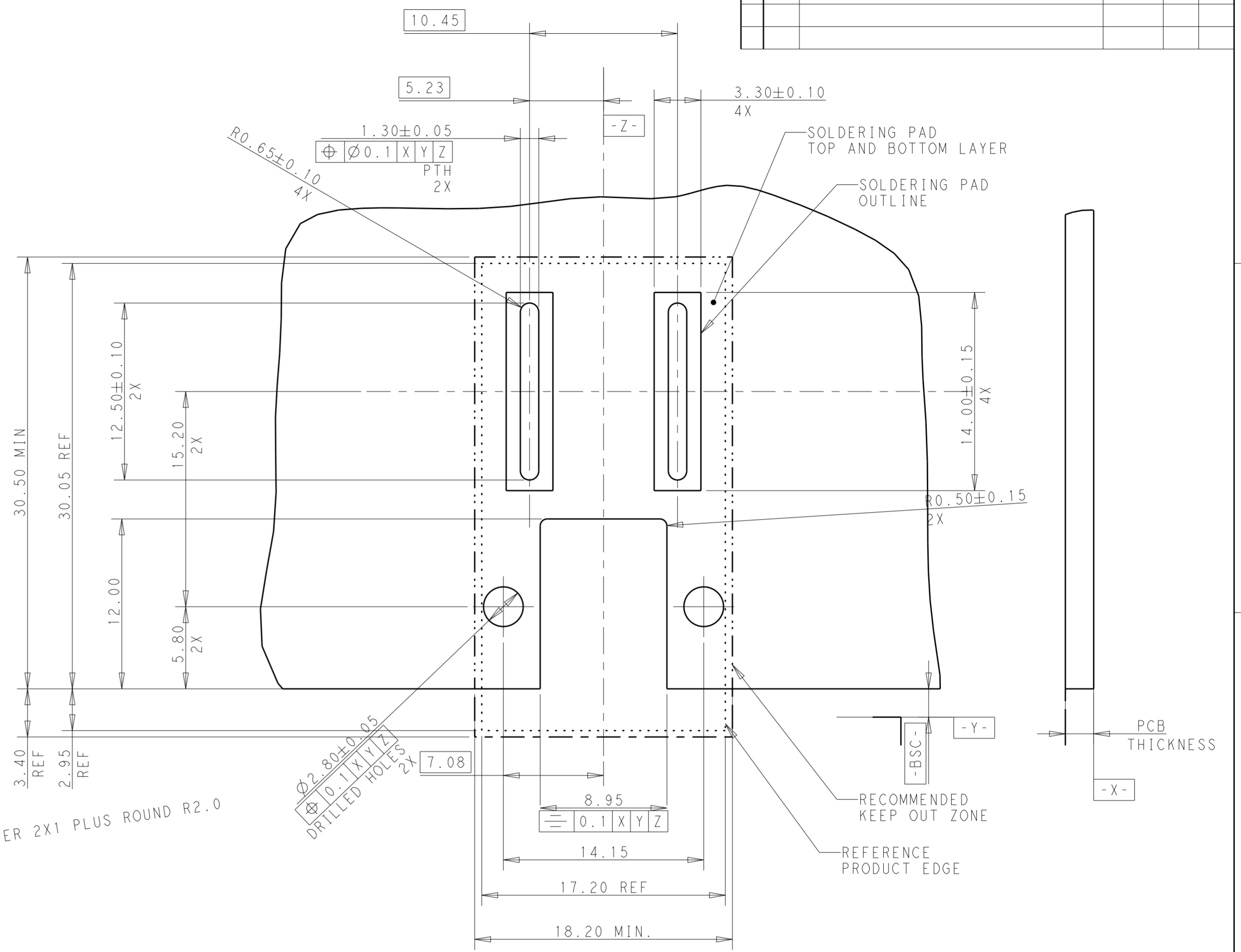
THIS DRAWING IS A CONTROLLED DOCUMENT.		DWN: MAC LIU 06AUG2018	TE Connectivity	CROWN CLIP JUNIOR HC300 POWER HIGH CURRENT POWER VERSION SOLDERING CONNECTOR		
DIMENSIONS: mm		CHK: SUNY ZHAO 06AUG2018		NAME: SUNY ZHAO	SIZE: A2	CAGE CODE: 100779
TOLERANCES UNLESS OTHERWISE SPECIFIED:		APVD: SUNY ZHAO 06AUG2018		PRODUCT SPEC: 108-128048	DRAWING NO: C-2204900	RESTRICTED TO: -
0 PLC ± - 1 PLC ±0.3 2 PLC ±0.15 3 PLC ±0.05 4 PLC ± - ANGLES ±5° FINISH		MATERIAL: 2		WEIGHT: -	SCALE: 2:1	SHEET 1 OF 2
CUSTOMER DRAWING			REV A			

THIS DRAWING IS UNPUBLISHED. RELEASED FOR PUBLICATION
 © COPYRIGHT - TE CONNECTIVITY ALL RIGHTS RESERVED.

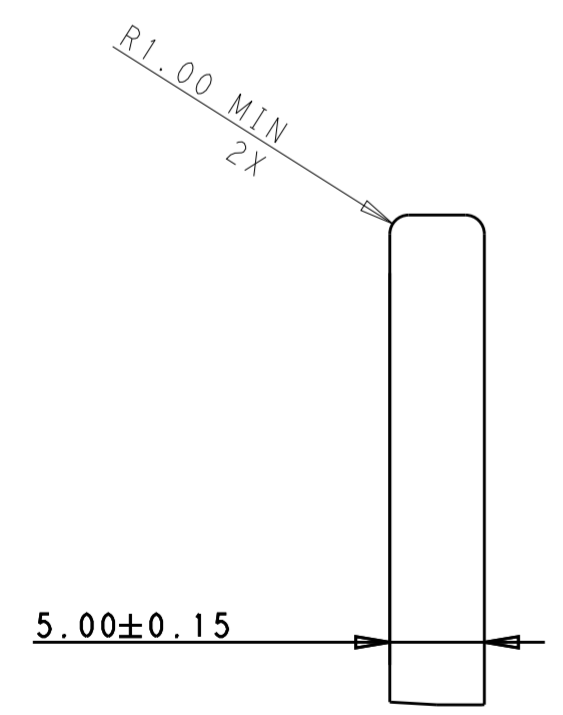
LOC	DIST	REVISIONS			
P	LTR	DESCRIPTION	DATE	DWN	APVD
EC	00	SEE SHEET 1	-	-	-



REFERENCE APPLICATION VIEW

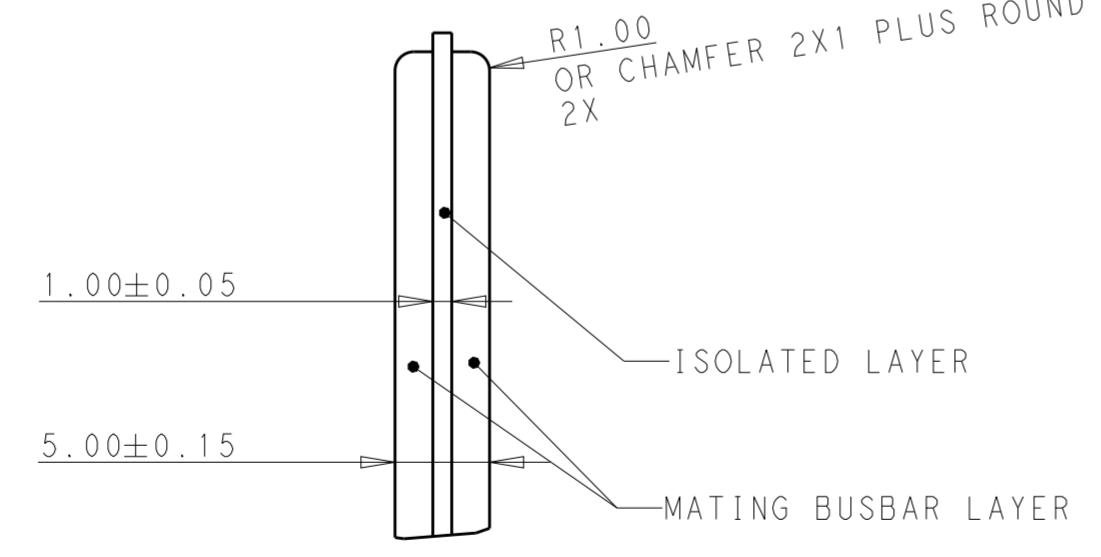


RECOMMENDED PCB LAYOUT FOR REFLOW SOLDERING
 THICKNESS: 2.5-6.0mm



DETAIL B
 SCALE 5:2
 SOLID MATING BUSBAR

MATING EDGE TREATMENT:
 NO SHARP EDGE IN MATING AREA.



SCALE 5:2
 LAMINATED MATING BUSBAR

THIS DRAWING IS A CONTROLLED DOCUMENT.		DWN MAC LIU 06AUG2018	TE Connectivity	NAME CROWN CLIP JUNIOR HC300 POWER HIGH CURRENT POWER VERSION SOLDERING CONNECTOR		
DIMENSIONS: mm		CHK SUNY ZHAO 06AUG2018		SIZE A2	CAGE CODE 100779	DRAWING NO G-2204900
TOLERANCES UNLESS OTHERWISE SPECIFIED:		APVD SUNY ZHAO 06AUG2018		RESTRICTED TO	-	
0 PLC ± - 1 PLC ± 0.3 2 PLC ± 0.15 3 PLC ± 0.05 4 PLC ± - ANGLES ± 5° FINISH		PRODUCT SPEC - APPLICATION SPEC - WEIGHT -		SCALE 2:1	SHEET 2	OF 2
MATERIAL		CUSTOMER DRAWING	REV A			