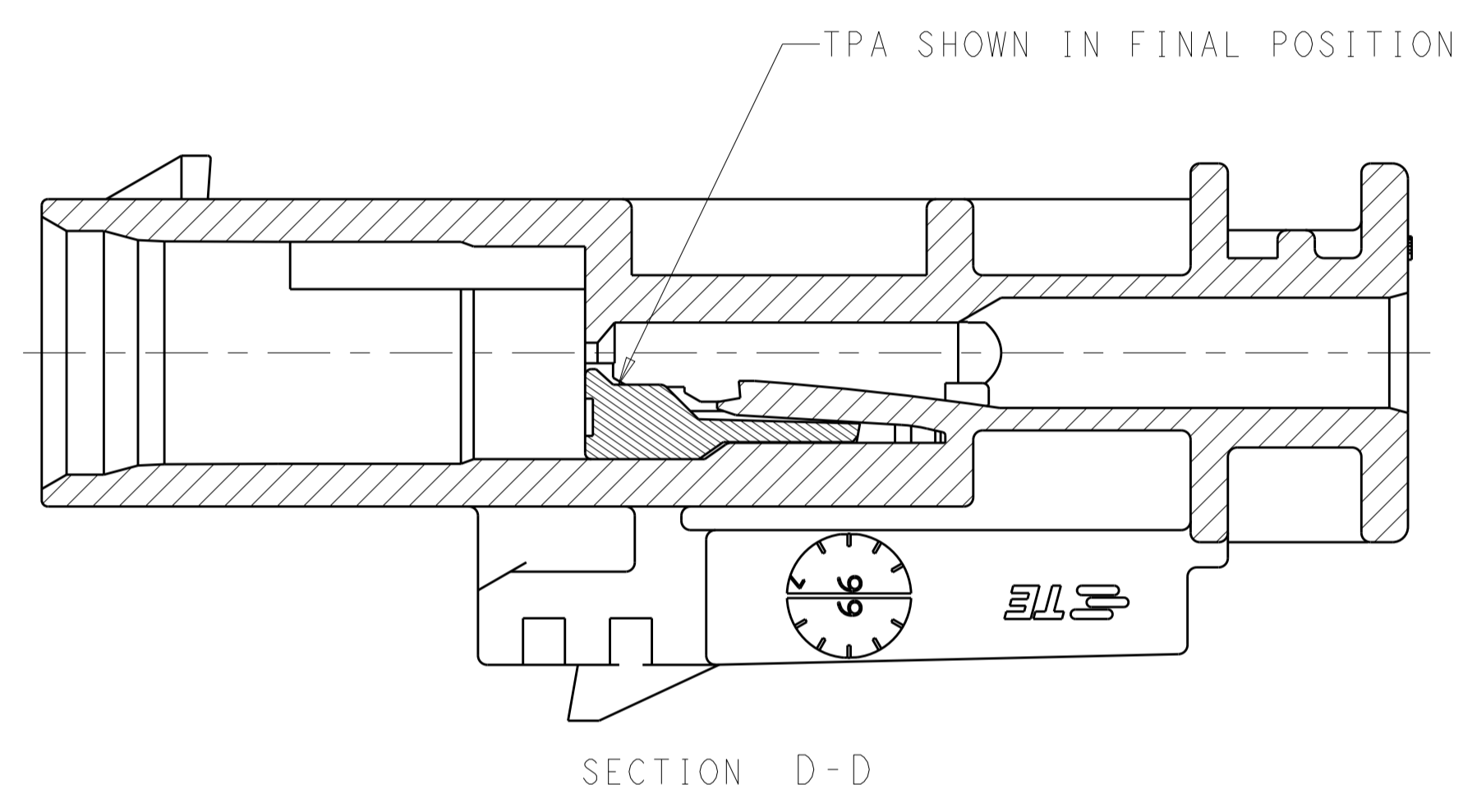
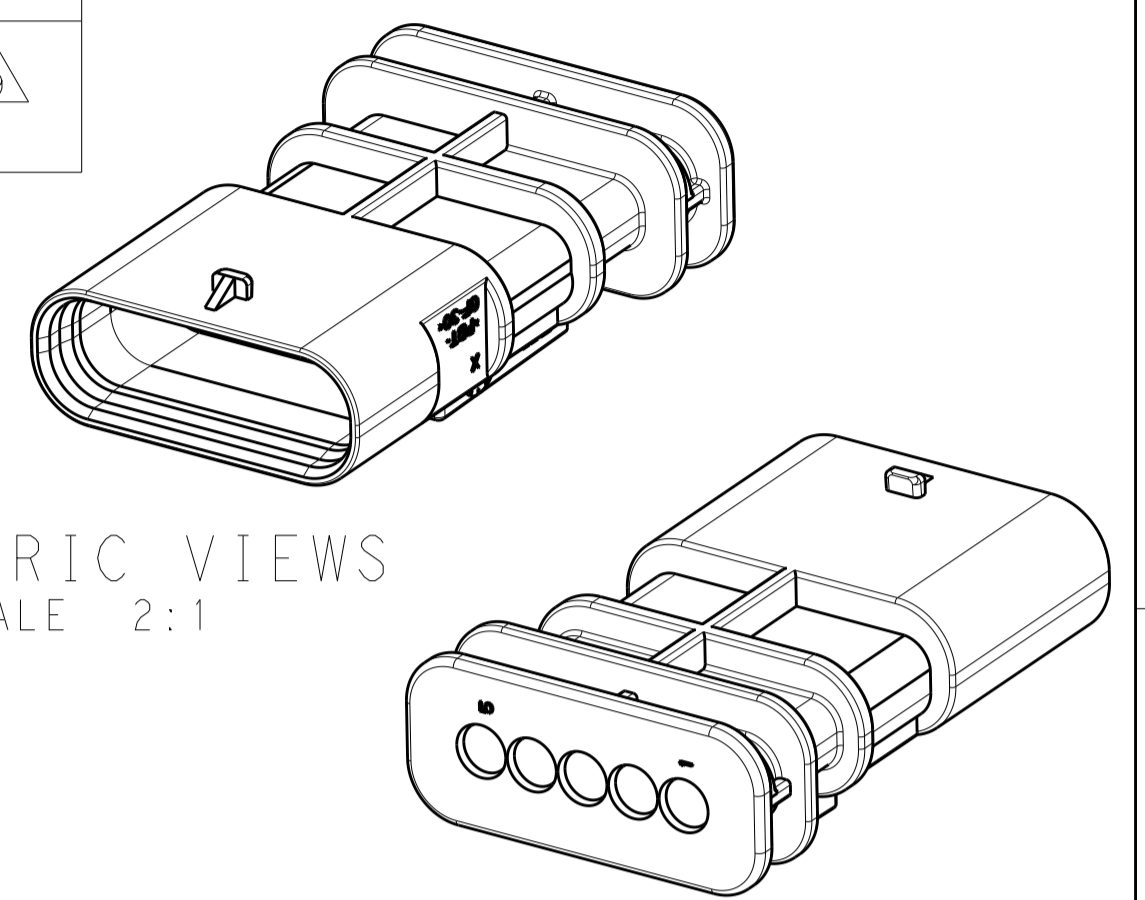
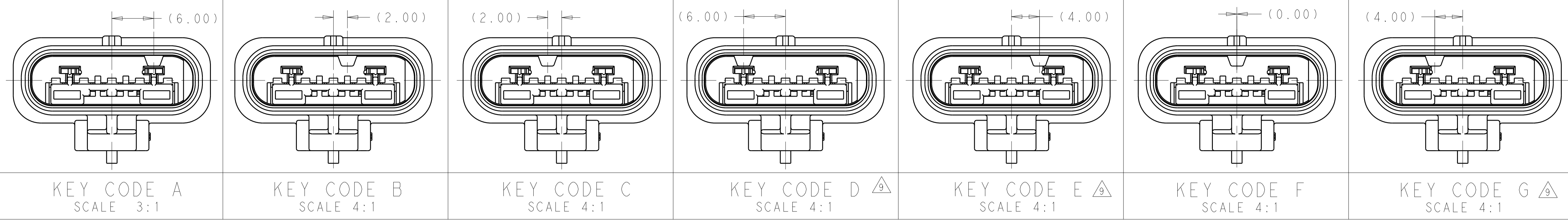
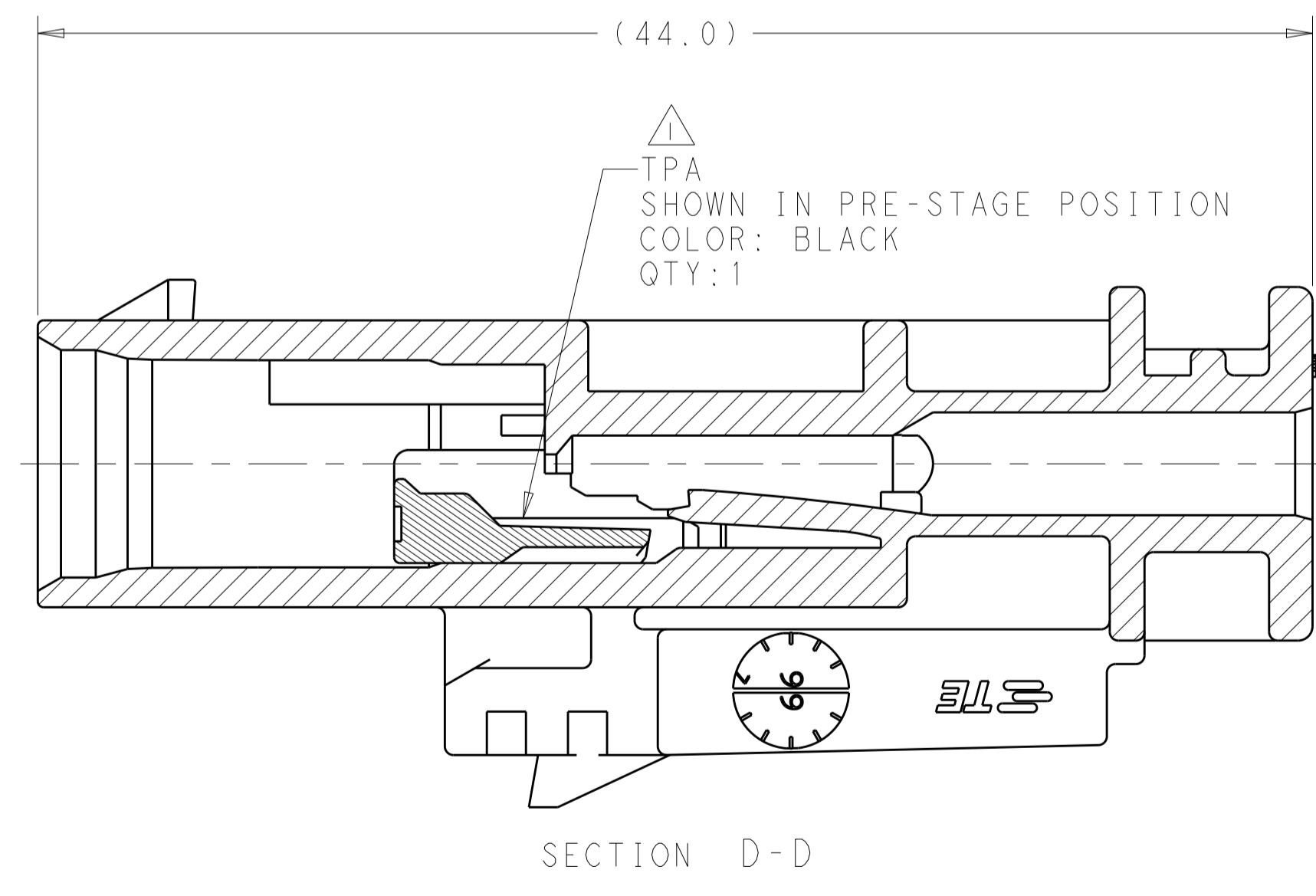
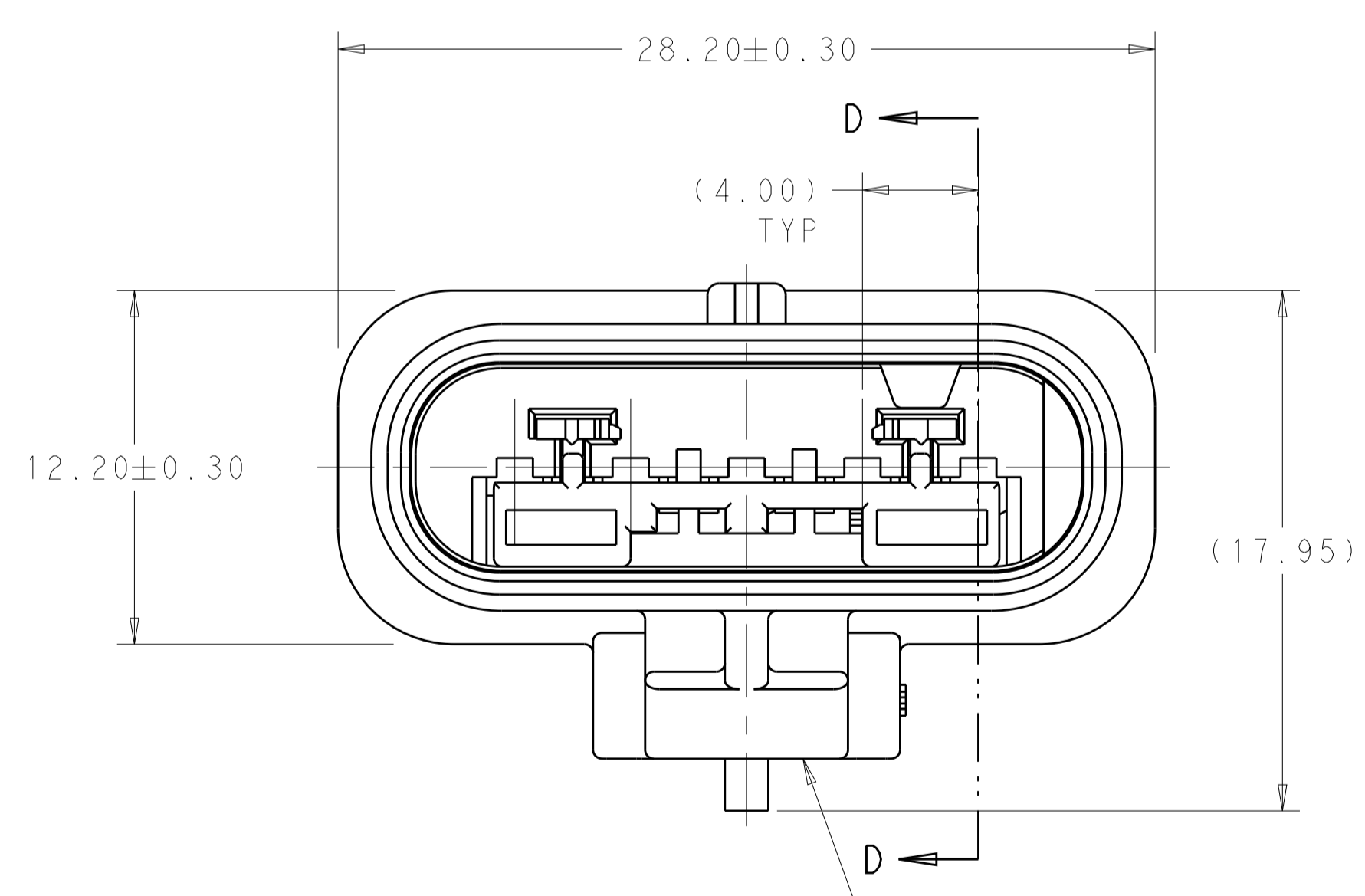


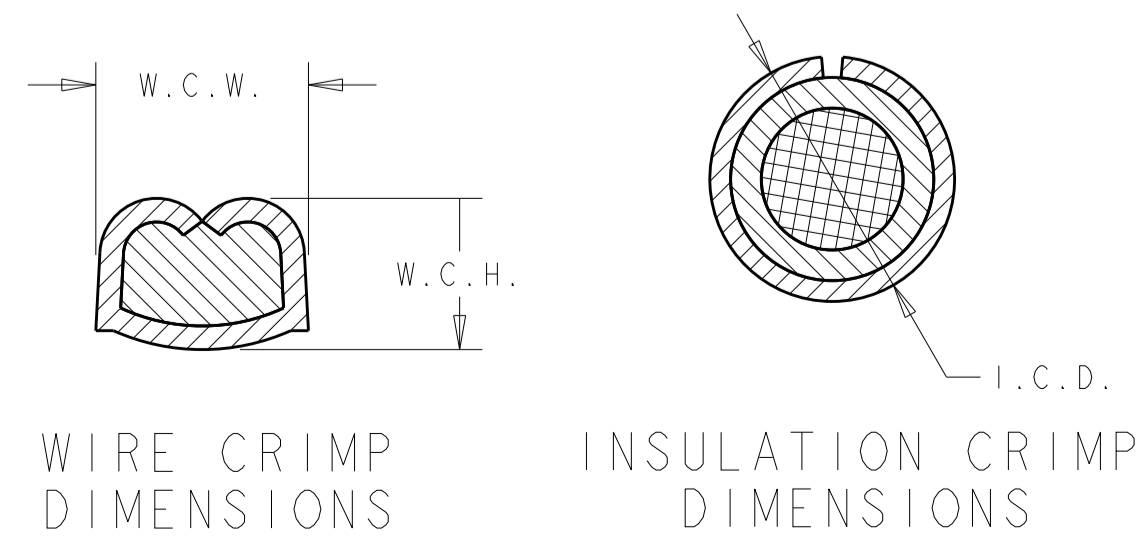
REVISIONS				
P. LTR	DESCRIPTION	DATE	OWN	APVD
1	INITIAL RELEASE	13MAY2014	MDB	MDB
A	RELEASED PER ECO-17-002820	01MAR2017	VP	MDB



- △ CAP ASSEMBLY IS SHIPPED WITH TPA IN PRE-STAGED POSITION. SEE INSTRUCTION SHEET 408-32094 FOR CONNECTOR SERVICE AND TPA OPERATION.
- 2. TERMINALS SOLD SEPARATELY. FOR USE WITH TE MCON 1.2mm CLEAN BODY TAB CONTACT WITH WIRE SEAL. SEE TABLE.
- 3. FOR OPTIONAL TERMINAL CAVITY BLOCKING, CONTACT TE SALES REPRESENTATIVE OR CUSTOMER SERVICE.
- △ 4. CONTACT PLATING AND APPLICABLE INDIVIDUAL WIRE SEAL ARE APPLICATION DEPENDENT. CONTACT TE SALES REPRESENTATIVE OR CUSTOMER SERVICE FOR DETAILS.
- △ 5. FOR WIRE CRIMP DETAILS, SEE TE APPLICATION SPECIFICATION 114-18464.
- △ 6. DOCUMENTED I.C.D. IS SPECIFIED TO MEET MOST WIRE SEAL APPLICATIONS. HOWEVER, I.C.D. IS HIGHLY DEPENDENT ON INSULATION TYPE AND OD. SUFFICIENT GRIP OF THE WIRE SEAL MUST BE OBTAINED SUCH THAT WIRE SEAL DOES NOT DISPLACE FROM INSULATION GRIP DURING CONTACT INSERTION INTO CONNECTOR HOUSING. THE WIRE SEAL SHALL NOT BE CRIMPED TOO TIGHTLY THAT THE WIRE SEAL TEARS DURING THE CRIMPING OPERATION.
- 7. CAP ASSEMBLY ACCEPTS ACCESSORY CLIPS DESIGNED TO FUNCTION IN CLIP SLOT DEFINED BY EWCAP-005-7, REVISION A.
- 8. NOTE REMOVED
- △ 9. KEY CODE NOT TOOLED.
- 10. TRACEABILITY CODE (YY = TWO DIGIT YEAR, JJJ = 3 DIGIT JULIAN DAY, S = 1 DIGIT SHIFT).



CAP HOUSING
 COLOR: YELLOW
 QTY: 1



KEYING CODE	PART NUMBER
G △ 9	2203811-7
F	2203811-6
E △ 9	2203811-5
D △ 9	2203811-4
C	2203811-3
B	2203811-2
A	2203811-1

MAX TEMP △ 4	MALE TERMINAL P/N	APPLICABLE WIRE FINISHED O.D.	W.C.H.	W.C.W.	I.C.D.	WIRE SEAL PART NUMBER △ 4
125°C	2141114	1.40-1.90mm				967067-1
	2141116	1.40-1.90mm	△ 5	△ 5	△ 5 △ 6	967067-1
	2177610	1.90-2.40mm				964972-1

THIS DRAWING IS A CONTROLLED DOCUMENT.		OWN: D. DRUMMOND 12NOV2013	TE Connectivity CONNECTOR ASSEMBLY, SEALED, CAP, 5 POSITION, MCON SIR
DIMENSIONS:	TOLERANCES UNLESS OTHERWISE SPECIFIED:	CHK: D. BROWN 12NOV2013	
mm	0 PLC ±0.3 2 PLC ±0.15 3 PLC ±0.15 4 PLC ±0.15 ANGLES ±0.5	APVD: D. BROWN 12NOV2013	NAME: PRODUCT SPEC
MATERIAL:	FINISH:	APPLICATION SPEC:	SIZE: CAGE CODE: DRAWING NO: RESTRICTED TO
		WEIGHT:	A100779C=2203811
		CUSTOMER DRAWING:	SCALE: 5:1 SHEET 1 OF 1 REV A