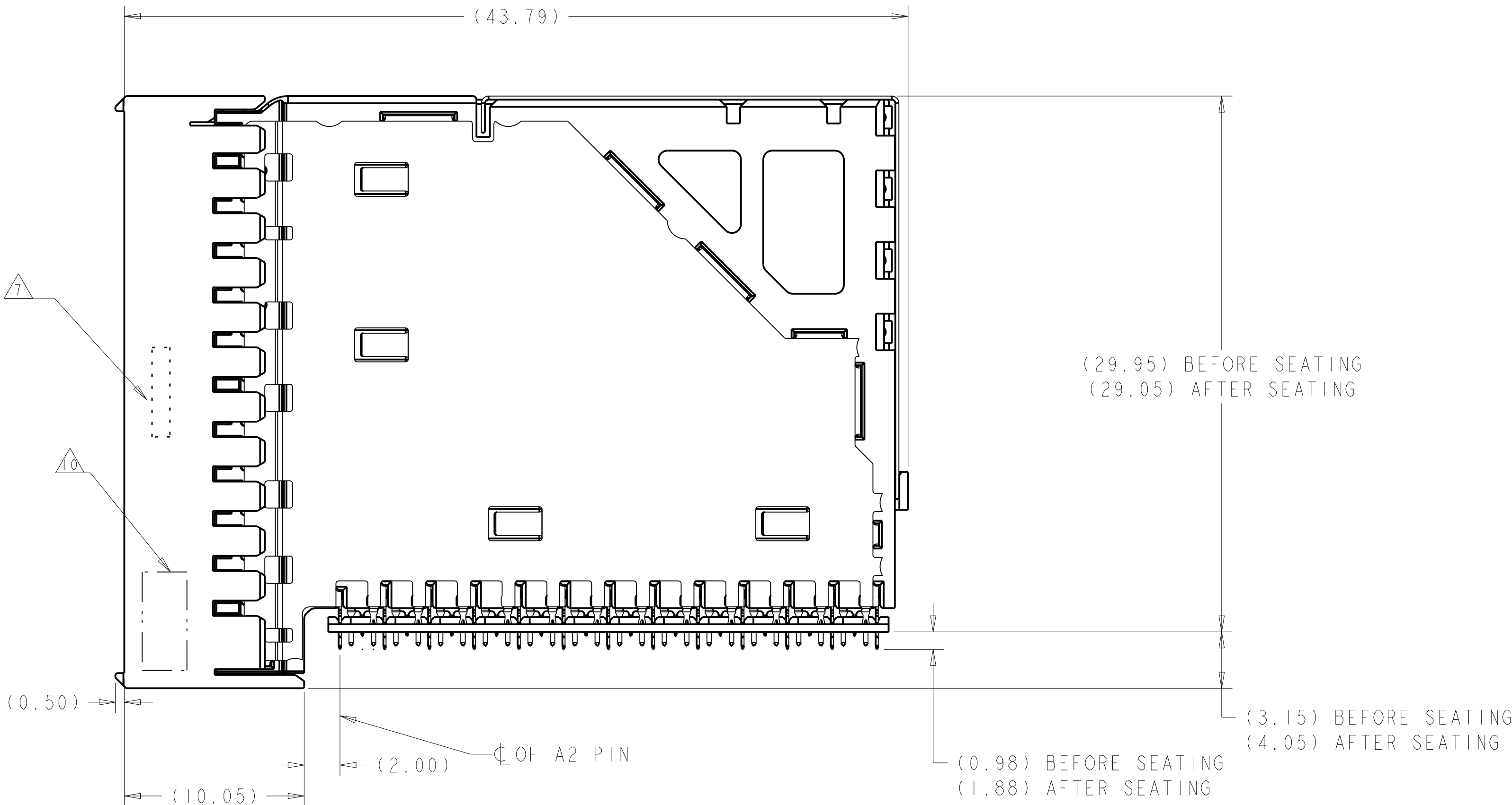
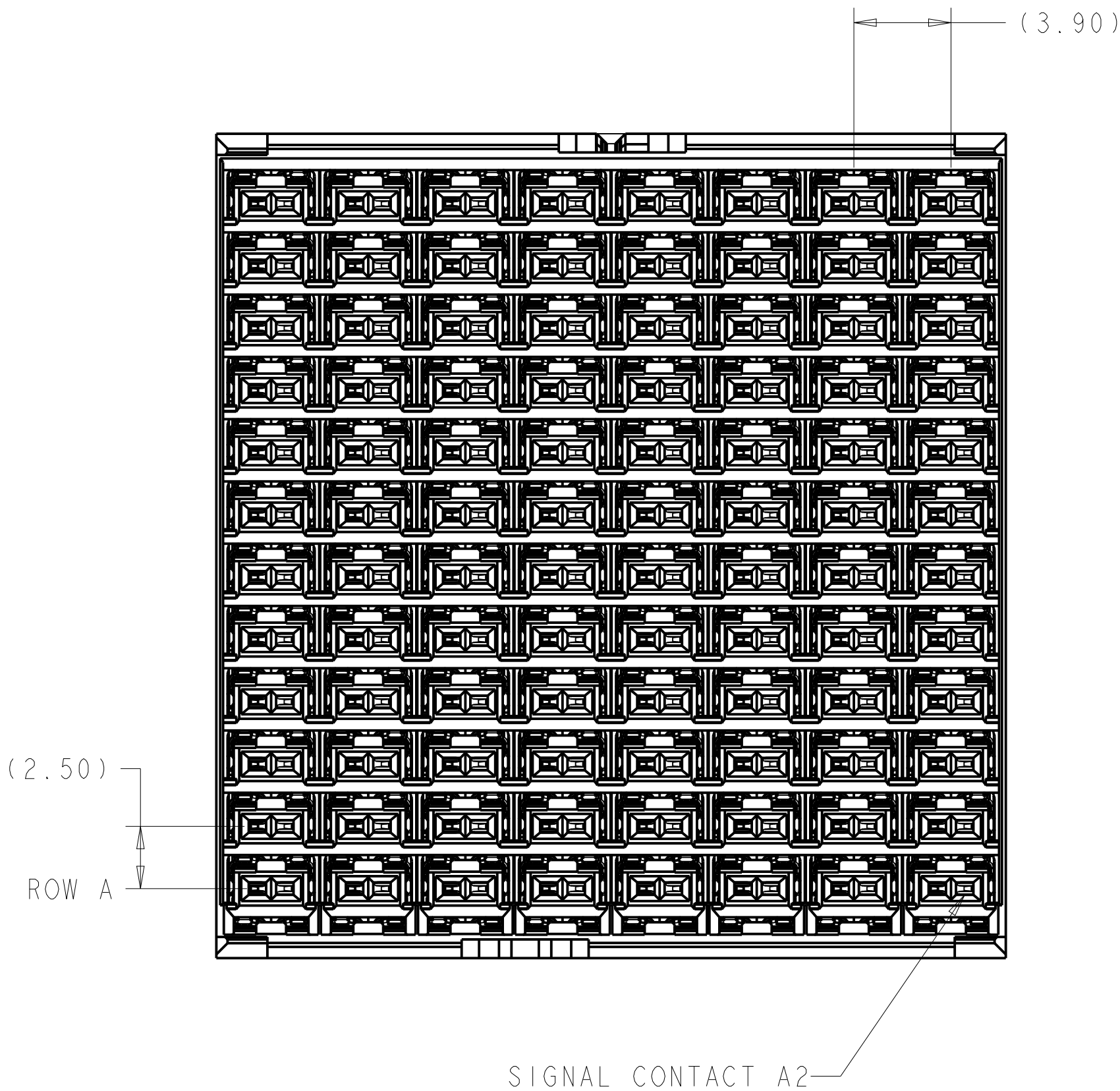
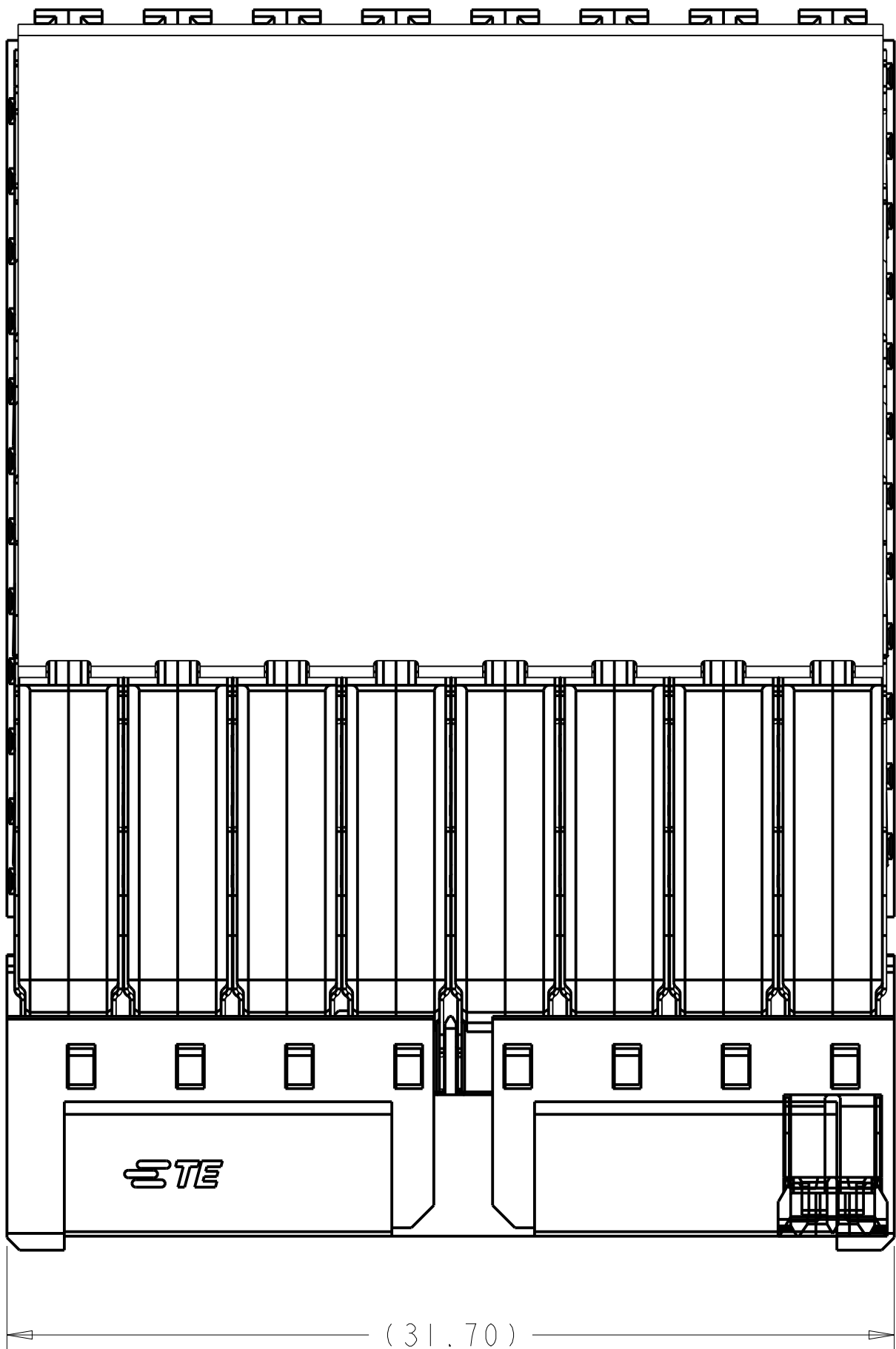


LOC	DIST	REVISIONS				
		P	LTR	DESCRIPTION	DATE	OWN
GP	00	B		REVISED PER ECO-16-007341	11MAY2016	AP
		C		REVISED PER ECO-17-003153	14MAR2017	AP
		D		REVISED PER ECO-21-003195	10MAR2021	AP

- △ MATERIAL:
CONTACTS AND SHIELDS - COPPER ALLOY
ORGANIZER - STAINLESS STEEL
HOUSING, GROUND SHELLS, AND PIN SPACER - THERMOPLASTIC, UL 94V-0, BLACK
- △ FINISH:
- CONFORMS TO THE REQUIREMENTS OF TE PRODUCT SPECIFICATION 108-32021
 BASED ON TELCORDIA GR-1217-CORE FOR SYSTEM QUALITY LEVEL III,
 APPLICATIONS IN CONTROLLED ENVIRONMENTS (CENTRAL OFFICE).
- COMPLIANT PIN AREA: 0.5µm MIN MATTE TIN.
- △ GROUND PLATED THRU HOLE REQUIREMENTS:
FINISHED HOLE = Ø 0.34±0.05
HOLE SIZE PRIOR TO PLATING = Ø 0.420±0.025
COPPER THICKNESS = 0.025 MIN
IMMERSION TIN IF APPLICABLE = 0.00095 REF
- △ SIGNAL PLATED THRU HOLE REQUIREMENTS:
FINISHED HOLE = Ø 0.24±0.04
HOLE SIZE PRIOR TO PLATING = Ø 0.320±0.025
COPPER THICKNESS = 0.025 MIN
IMMERSION TIN IF APPLICABLE = 0.00095 REF
- △ SI VIA PLATED THRU HOLE REQUIREMENTS:
HOLE SIZE PRIOR TO PLATING=0.300±0.025
COPPER THICKNESS= MIN REQUIRED TO MEET REQUIRED ELECTRICAL PERFORMANCE
- △ SI VIAS & SIGNAL HOLES:
PTH DIMENSIONS APPLY TO THE TOP 1.00mm OF THE PCB THICKNESS FROM THE
CONNECTOR MOUNTING SIDE.
GROUND HOLES:
PTH DIMENSIONS APPLY TO THE TOP 1.25mm OF THE PCB THICKNESS FROM THE
CONNECTOR MOUNTING SIDE.
- △ CONNECTOR MARKED WITH PART NUMBER, DATE CODE, AND "100 OHM" IN
APPROXIMATE AREA SHOWN.
- △ DATUMS AND BASIC DIMENSIONS ESTABLISHED BY CUSTOMER
- △ APPLIES TO FINISHED HOLE DIAMETER.
- △ DATAMATRIX BARCODE MARKING IN THIS AREA.



THIS DRAWING IS A CONTROLLED DOCUMENT.

OWN: N. EVANS 01APR2015
CHK: N. EVANS 01APR2015
APVD: D. SHIRK 01APR2015

DIMENSIONS: mm
TOLERANCES UNLESS OTHERWISE SPECIFIED:
0 PLC ±
1 PLC ±
2 PLC ±0.13
3 PLC ±
4 PLC ±
ANGLES ±
FINISH

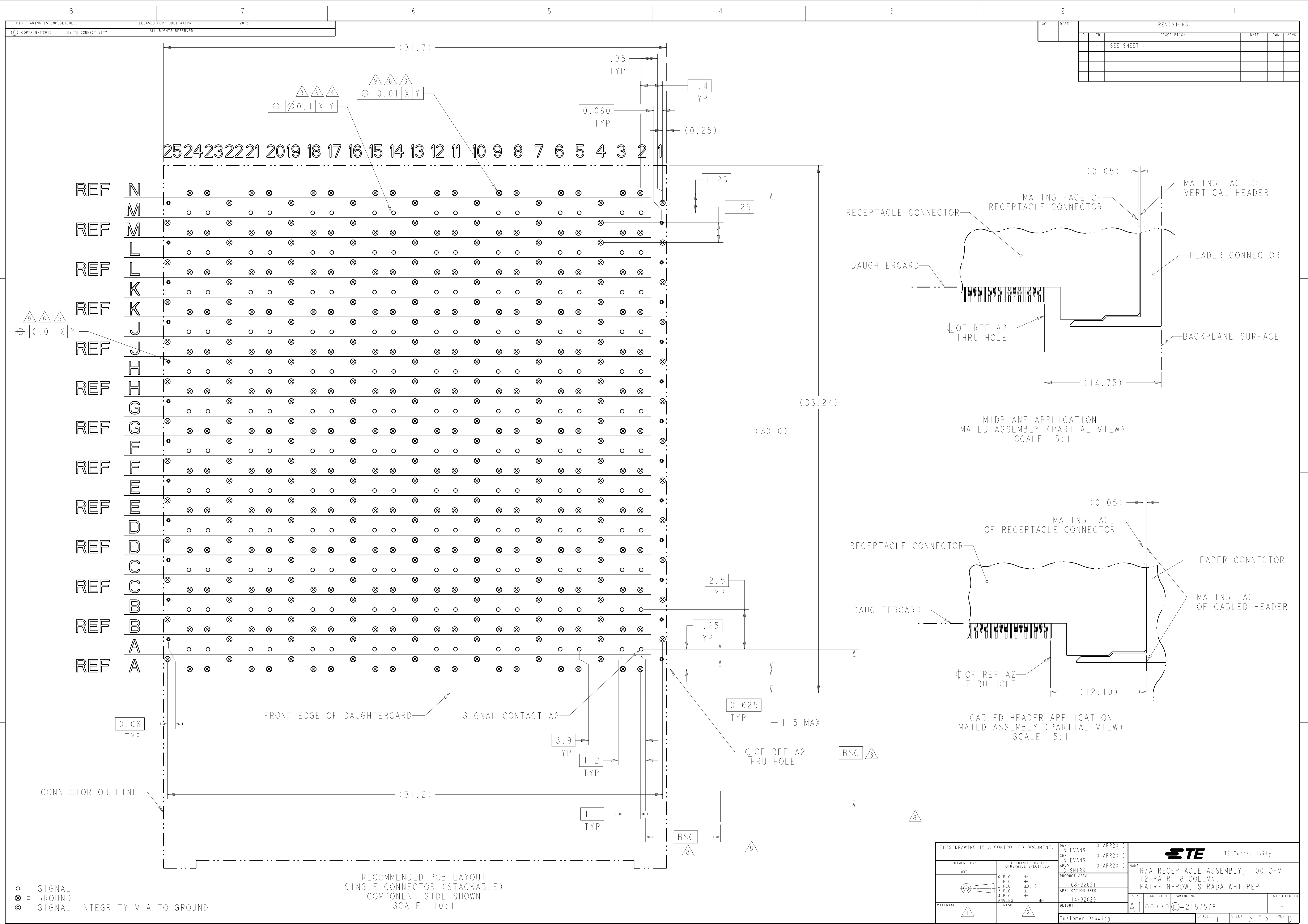
MATERIAL 1
FINISH 2

PRODUCT SPEC: 108-32021
APPLICATION SPEC: 114-32029
WEIGHT: -
CUSTOMER DRAWING

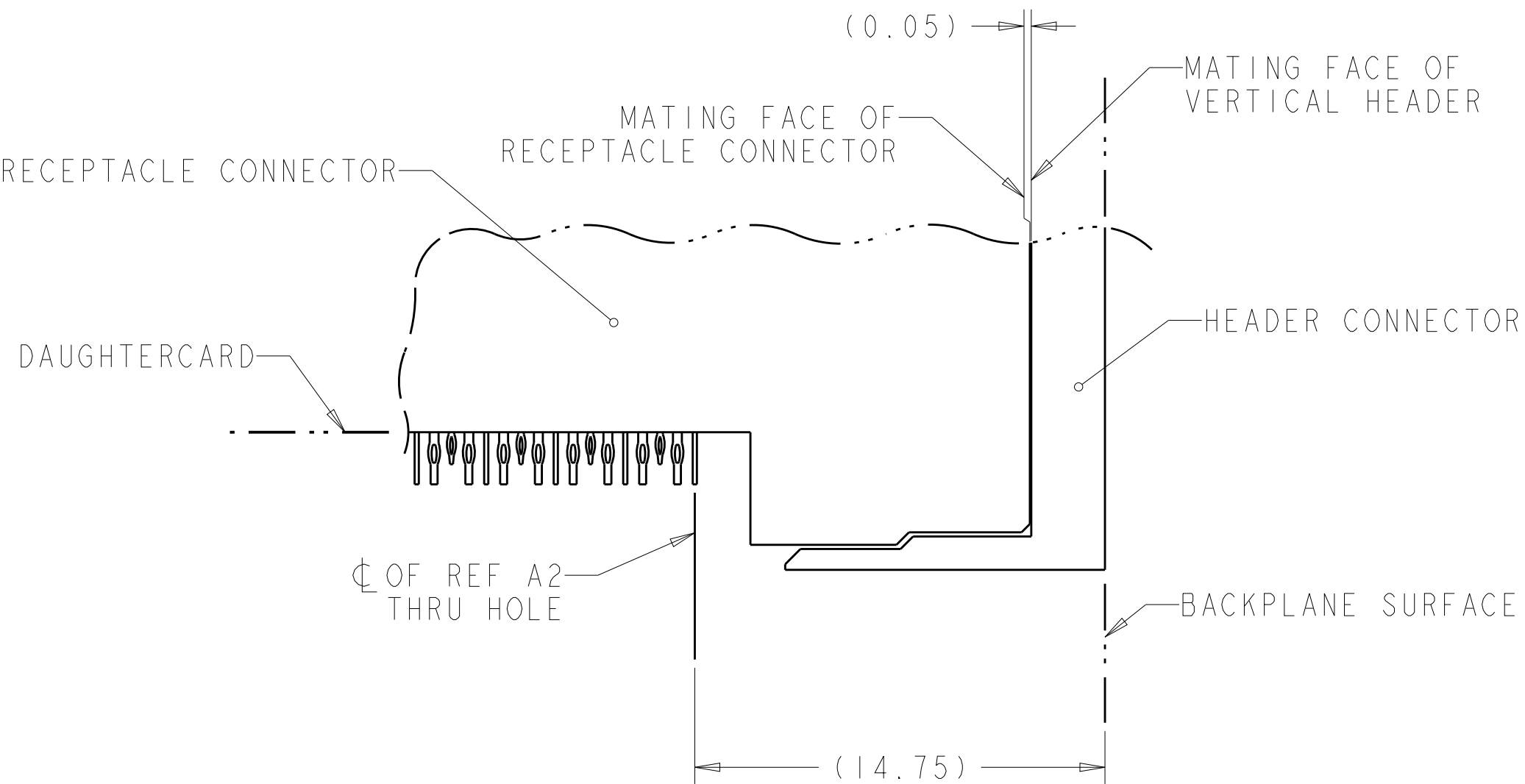
NAME: R/A RECEPTACLE ASSEMBLY, 100 OHM
12 PAIR, 8 COLUMN,
PAIR-IN-ROW, STRADA WHISPER
SIZE: A1
CAGE CODE: 00779
DRAWING NO: C=2187576

RESTRICTED TO: -
SCALE: 5:1
SHEET: 1 OF 2
REV: D

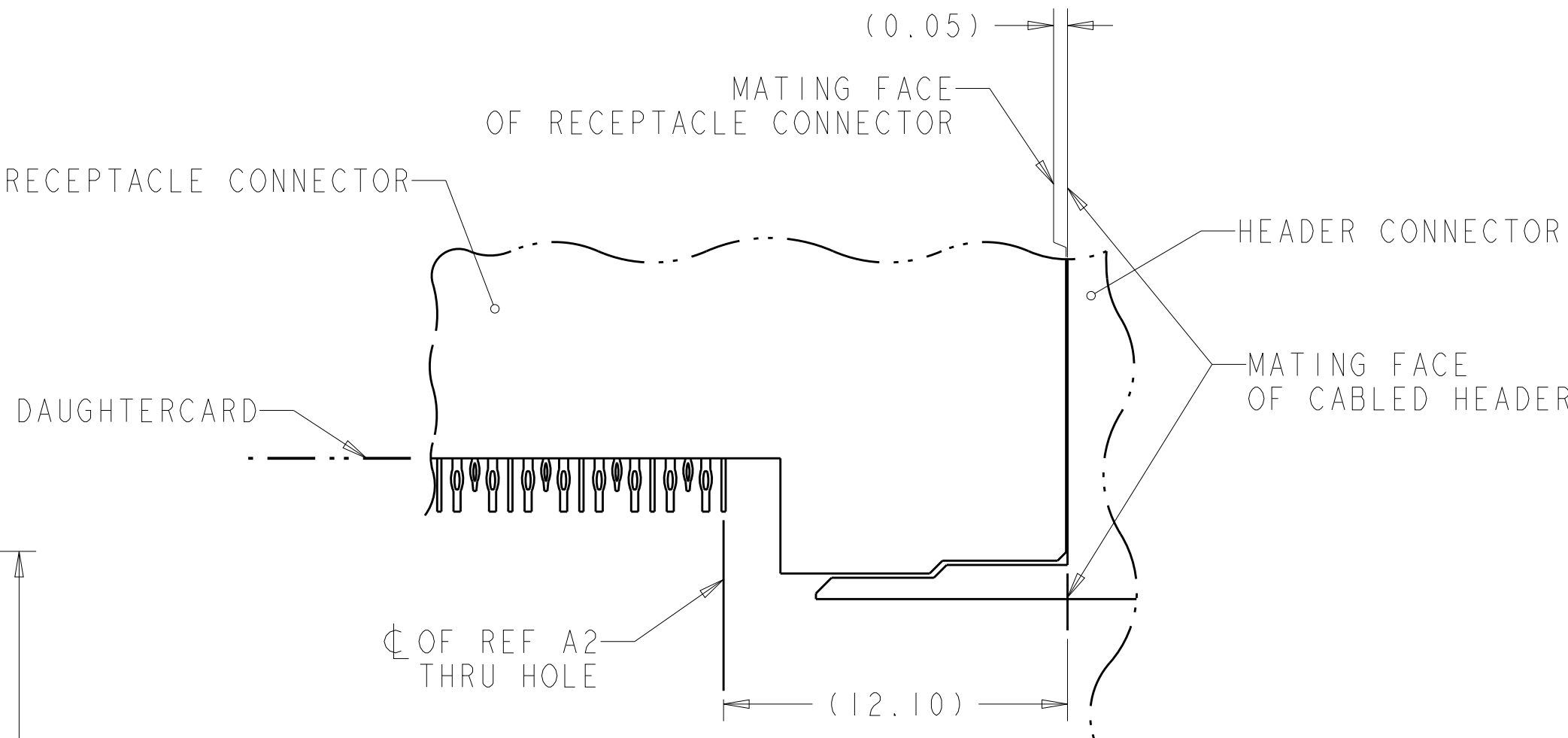
2187576-1
PART NO



LOC		DIST		REVISONS			
P	LTR	DESCRIPTION		DATE	DWN	APVD	
-	-	SEE SHEET 1		-	-	-	



MIDPLANE APPLICATION
MATED ASSEMBLY (PARTIAL VIEW)
SCALE 5:1



CABLED HEADER APPLICATION
MATED ASSEMBLY (PARTIAL VIEW)
SCALE 5:1

THIS DRAWING IS A CONTROLLED DOCUMENT.		DWN N. EVANS 01APR2015	TE Connectivity	
DIMENSIONS:		CHK N. EVANS 01APR2015		
mm	TOLERANCES UNLESS OTHERWISE SPECIFIED:	APVD D. SHIRK 01APR2015	NAME R/A RECEPTACLE ASSEMBLY, 100 OHM 12-PAIR, 8 COLUMN, PAIR-IN-ROW, STRADA WHISPER	
	0 PLC ±	PRODUCT SPEC	SIZE A1	
	1 PLC ±	108-32021	CAGE CODE 00779	
	2 PLC ±	APPLICATION SPEC	DRAWING NO 2187576	
	3 PLC ±	114-32029	RESTRICTED TO	
	4 PLC ±	WEIGHT	Customer Drawing	
	ANGLES	SCALE	1:1	
	FINISH	SHEET	2	
		OF	2	
		REV	D	