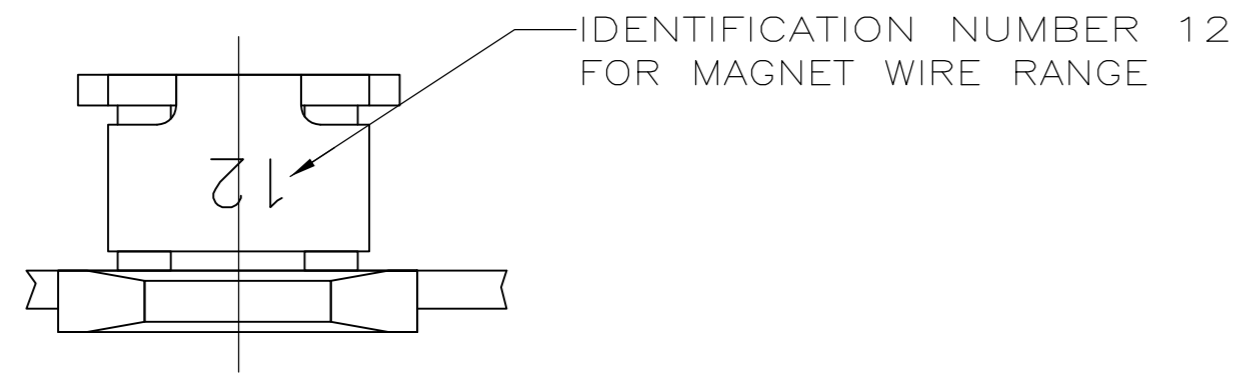
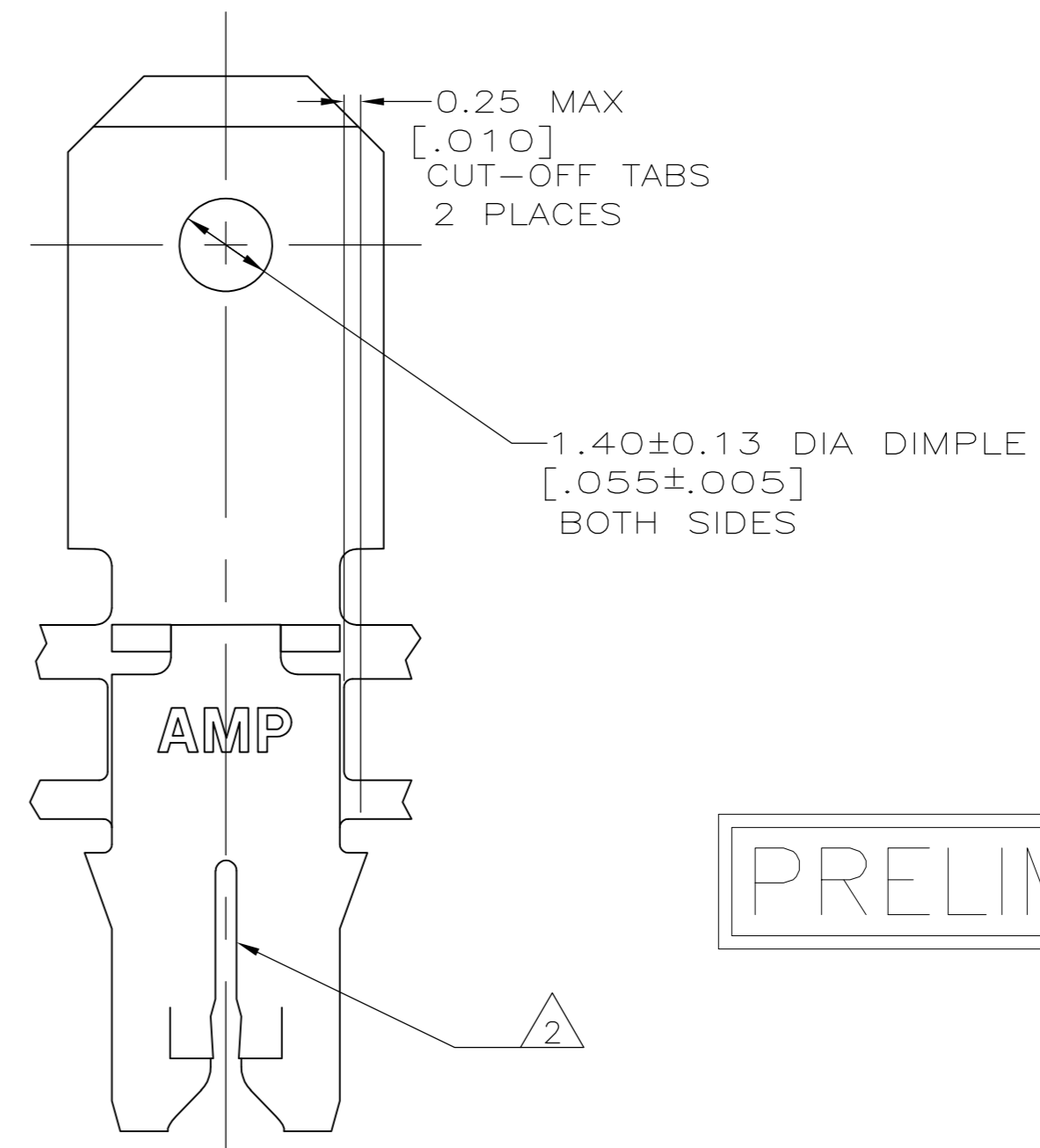
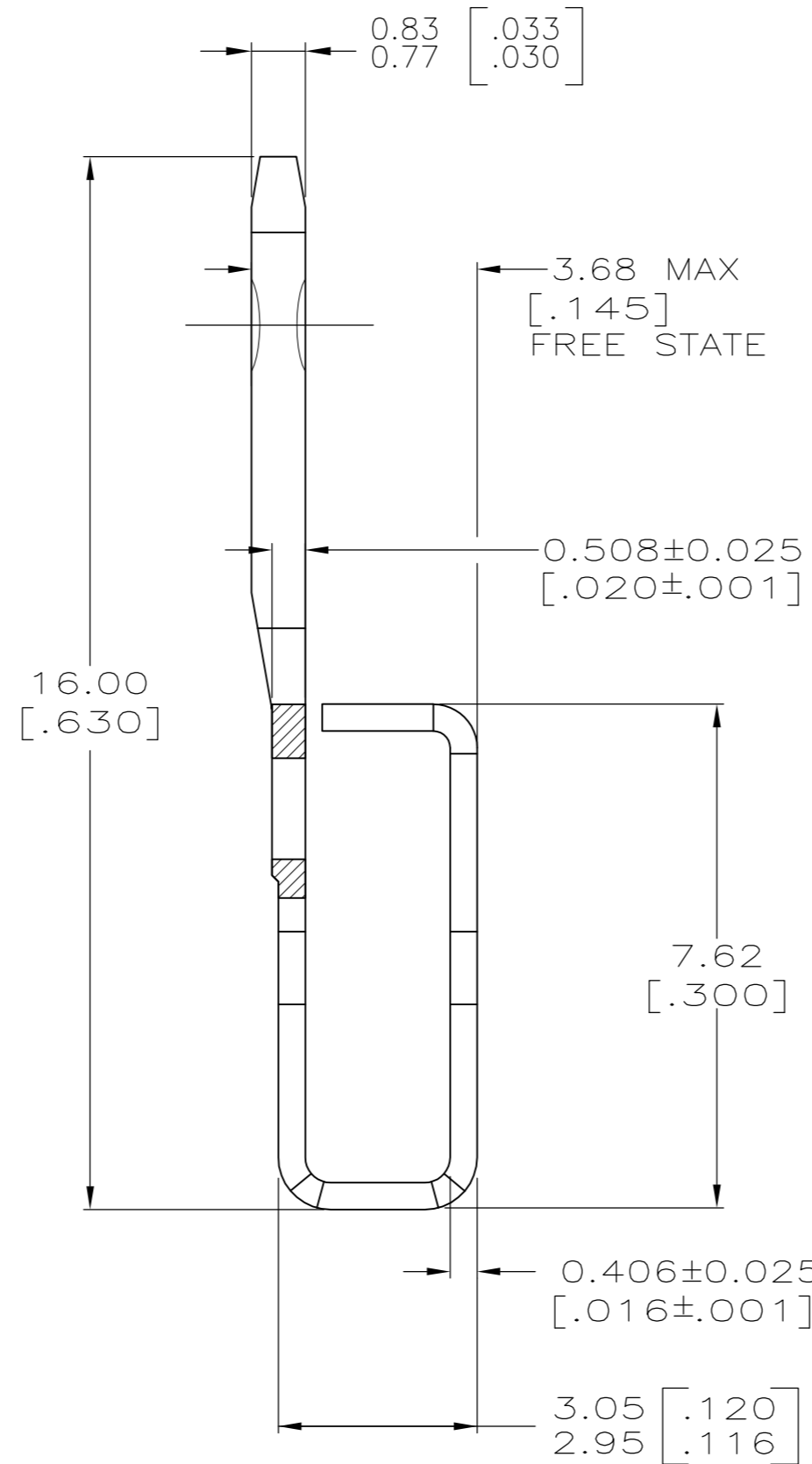
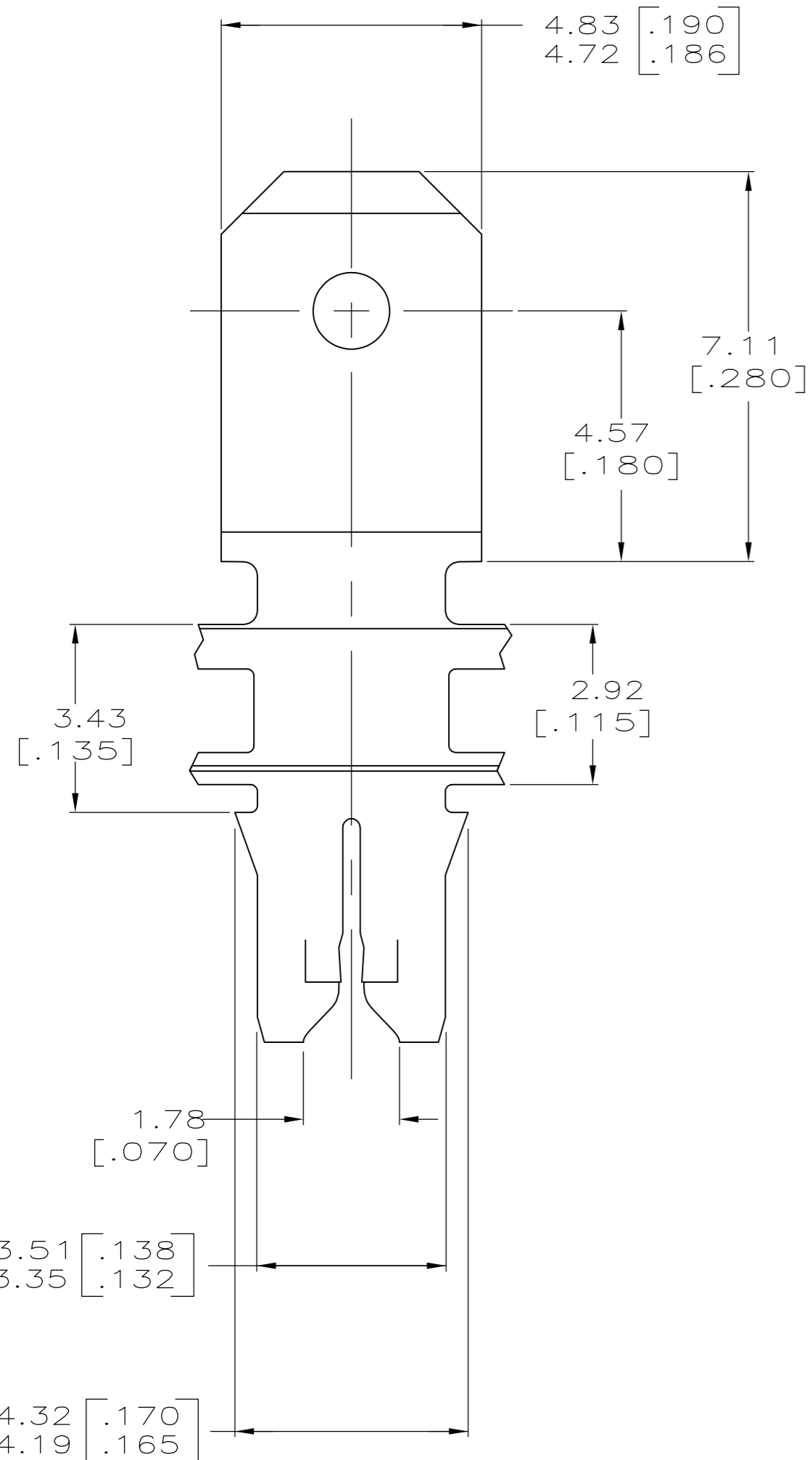


THIS DRAWING IS UNPUBLISHED. RELEASED FOR PUBLICATION FEB , 2014.
 © COPYRIGHT 2014 TE CONNECTIVITY ALL RIGHTS RESERVED.

LOC		DIST		REVISIONS			
P	LTR	DESCRIPTION	DATE	DWN	APVD		
1		PRELIMINARY ISSUE	10FEB2014	PKS	RRP		



- 1 CONTINUOUS STRIP ON REELS WITH TERMINALS LOCATED ON 5.59 ± 0.08 [.220 ± .003] CENTERS.
- 2 SLOTTED ACCEPTS $0.45 - 0.64$ mm [#25 - #22] AWG COPPER MAGNET WIRE. TWO WIRES OF SAME SIZE PER SLOT EXCEPT 0.64 [#22] AWG WHICH IS ONE WIRE ONLY
- 3 AFTER INSERTION INTO PLASTIC HOLDER TAB PORTION MUST BE BENT OVER 45° TO 90° OR POTTED-IN TO PREVENT PULL-OUT WHEN MATING RECEPTACLE IS DISCONNECTED.
- 4 PREPRODUCTION - FASR REQUIRED



PRELIMINARY

2178984-1
PART NUMBER

THIS DRAWING IS A CONTROLLED DOCUMENT.		DWN	07FEB2014	TE TE Connectivity	
DIMENSIONS: mm [INCHES]		CHK	10FEB2014		
TOLERANCES UNLESS OTHERWISE SPECIFIED:		APVD	10FEB2014	NAME	
0 PLC ± -		RAJENDRA		300 SERIES MAG-MATE TERMINAL	
1 PLC ± -		108-2012		4.75 [.187] FASTON TAB	
2 PLC ± 0.25 [.010]		APPLICATION SPEC		SIZE	RESTRICTED TO
3 PLC ± -		114-2046		A2	-
4 PLC ± -		WEIGHT		CAGE CODE	DRAWING NO
ANGLES ± -		-		00779	C=2178984
FINISH		CUSTOMER DRAWING		SCALE	SHEET
BRASS		TIN PLATED		10:1	1 OF 1
				REV	1