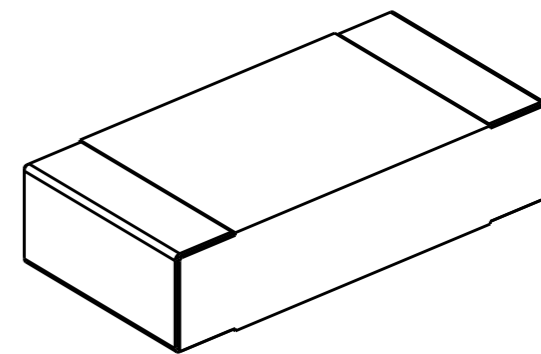
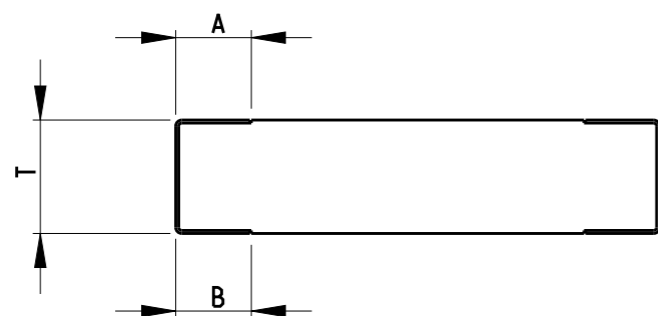
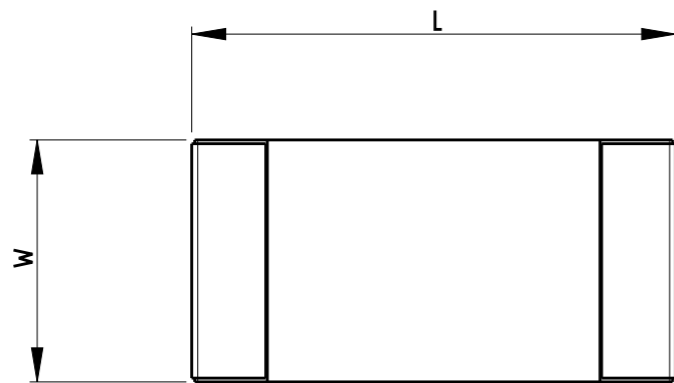


P	LTR	DESCRIPTION	DATE	DWN	APVD
	A	INITIAL RELEASE	01APR2019	SR	AP

Complete TIN	Product Number	Material Description	Resistance (mΩ)	L	W	T	A	B	Weight / 1000
2176418-1	TLRF2B10DR011FTD	TLRF 1206 1.0W R011 1% 50PPM 5K RL	11	3.20±0.20	1.60±0.15	0.75±0.15	0.50±0.30	0.50±0.30	22.6
2176418-2	TLRF2B10DR012FTD	TLRF 1206 1.0W R012 1% 50PPM 5K RL	12	3.20±0.20	1.60±0.15	0.75±0.15	0.50±0.30	0.50±0.30	22.6
2176418-3	TLRF2B10DR013FTD	TLRF 1206 1.0W R013 1% 50PPM 5K RL	13	3.20±0.20	1.60±0.15	0.75±0.15	0.50±0.30	0.50±0.30	22.6
2176418-4	TLRF2B10DR015FTD	TLRF 1206 1.0W R015 1% 50PPM 5K RL	15	3.20±0.20	1.60±0.15	0.75±0.15	0.50±0.30	0.50±0.30	22.6
2176418-5	TLRF2B10DR016FTD	TLRF 1206 1.0W R016 1% 50PPM 5K RL	16	3.20±0.20	1.60±0.15	0.75±0.15	0.50±0.30	0.50±0.30	22.6
2176418-6	TLRF2B10DR018FTD	TLRF 1206 1.0W R018 1% 50PPM 5K RL	18	3.20±0.20	1.60±0.15	0.75±0.15	0.50±0.30	0.50±0.30	22.6
2176418-7	TLRF2B10DR020FTD	TLRF 1206 1.0W R020 1% 50PPM 5K RL	20	3.20±0.20	1.60±0.15	0.75±0.15	0.50±0.30	0.50±0.30	22.6
2176418-8	TLRF2B10DR022FTD	TLRF 1206 1.0W R022 1% 50PPM 5K RL	22	3.20±0.20	1.60±0.15	0.75±0.15	0.50±0.30	0.50±0.30	22.6
2176418-9	TLRF2B10DR024FTD	TLRF 1206 1.0W R024 1% 50PPM 5K RL	24	3.20±0.20	1.60±0.15	0.75±0.15	0.50±0.30	0.50±0.30	22.6
1-2176418-0	TLRF2B10DR027FTD	TLRF 1206 1.0W R027 1% 50PPM 5K RL	27	3.20±0.20	1.60±0.15	0.75±0.15	0.50±0.30	0.50±0.30	22.6
1-2176418-1	TLRF2B10DR030FTD	TLRF 1206 1.0W R030 1% 50PPM 5K RL	30	3.20±0.20	1.60±0.15	0.75±0.15	0.50±0.30	0.50±0.30	22.6



RoHS Compliant

THIS DRAWING IS A CONTROLLED DOCUMENT.		DWN SUPREETH R 01APR2019		
		CHK A. PILE 01APR2019		
		APVD A. PILE 01APR2019	NAME SMD HIGH POWER - CURRENT SENSE RESISTORS, SERIES TLR - 2B	
DIMENSIONS: mm		PRODUCT SPEC -	SIZE A3	
		APPLICATION SPEC -	CAGE CODE 00779	
TOLERANCES UNLESS OTHERWISE SPECIFIED:		WEIGHT -	DRAWING NO C-2176418	
0 PLC ±0.2	1 PLC ±0.1	RESTRICTED TO -		
2 PLC ±	3 PLC ±	SCALE 20:1		
4 PLC ±	ANGLES 5°	SHEET 1 OF 1		
MATERIAL -	FINISH -	REV A		
CUSTOMER DRAWING				