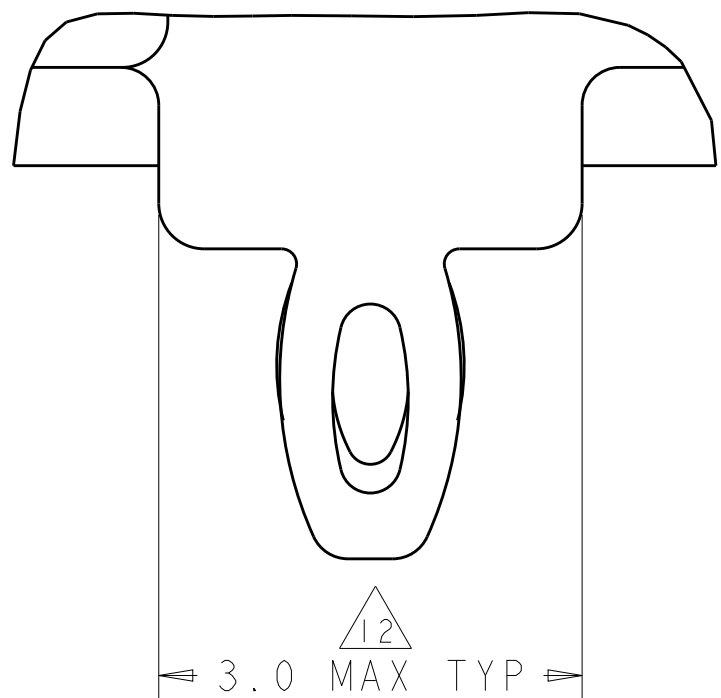


D

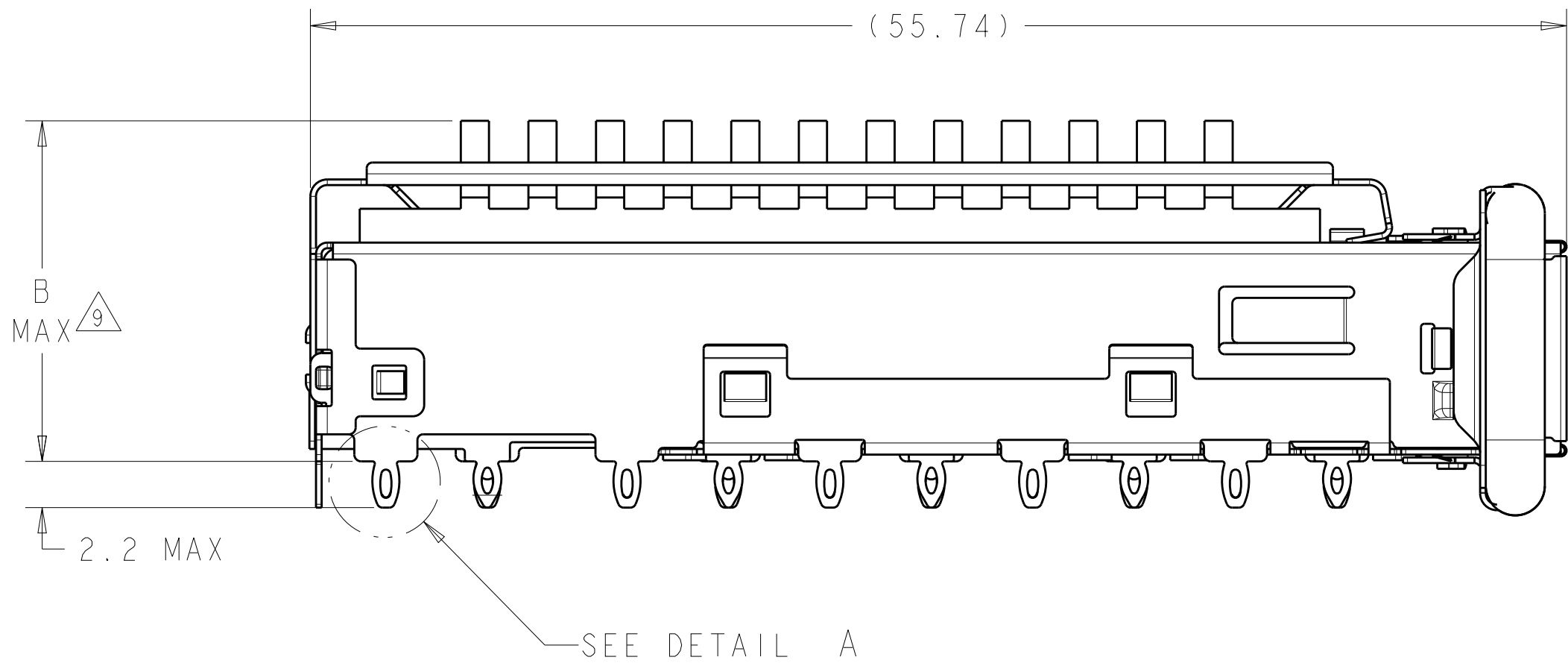
C

B

A



DETAIL A  
SCALE 20:1

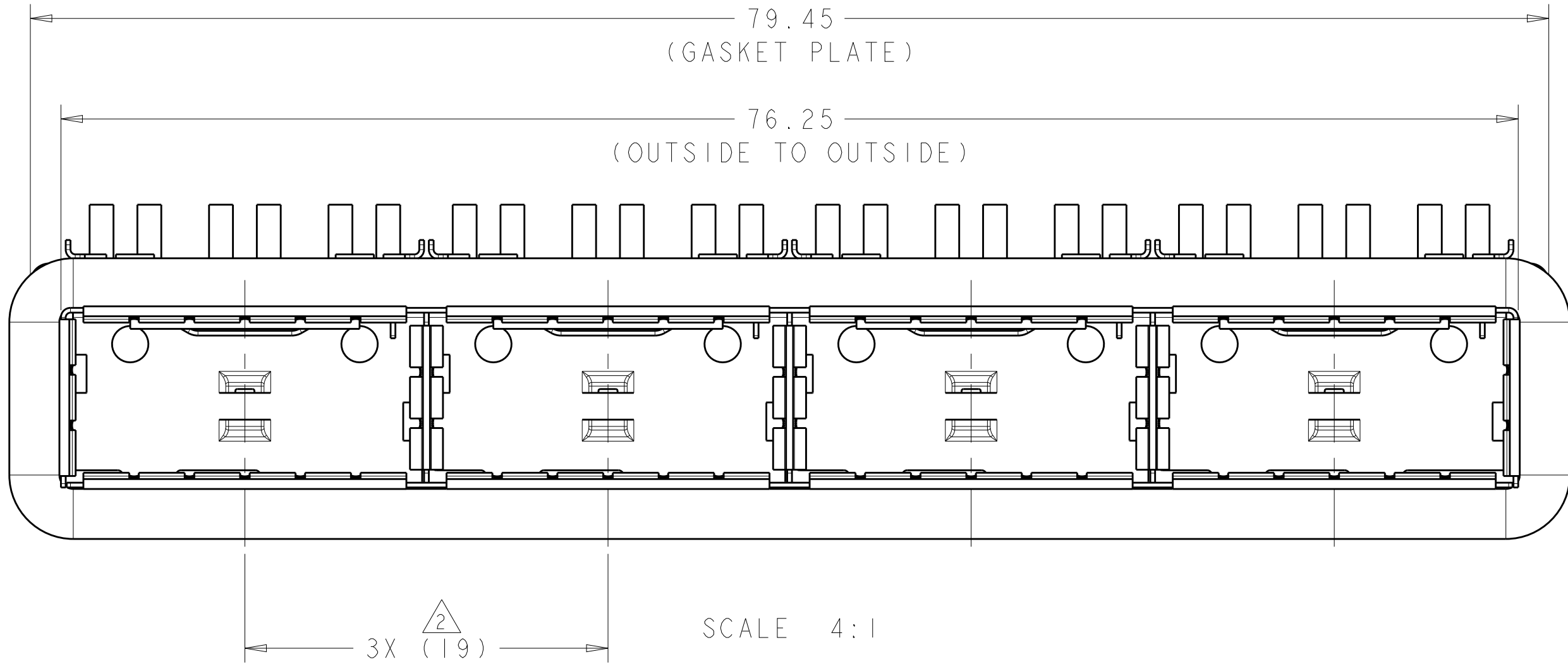


- 1 CAGE ASSEMBLY MATERIAL: NICKEL SILVER, 0.25 THICK  
HEAT SINK MATERIAL: ALUMINUM  
HEAT SINK CLIP MATERIAL: STAINLESS STEEL  
EMI SPRING MATERIAL: COPPER ALLOY  
EMI GASKET MATERIAL: CONDUCTIVE RUBBER,UL 94V-0 RATED  
EMI GASKET PLATE MATERIAL: STAINLESS STEEL

- 2 PITCH BETWEEN PORTS OF ONE 1X4 CAGE ASSEMBLY.  
3 SPACING BETWEEN CAGES ON THE SAME PC BOARD, TO BE SPECIFIED BY CUSTOMER, MUST COMPLY WITH MINIMUM DIMENSIONS SHOWN.  
4 REFERENCE APPLICATION SPEC 114-13217 FOR RECOMMENDED DRILL HOLE DIAMETER AND PLATING THICKNESS.  
5 DATUMS AND BASIC DIMENSIONS ESTABLISHED BY CUSTOMER.  
6 DIMENSION F IS THE NOMINAL THICKNESS OF CUSTOMER SUPPLIED PC BOARD,  
SINGLE SIDED PC BOARD MINIMUM THICKNESS = 1.45mm  
DOUBLE SIDED PC BOARD MINIMUM THICKNESS = 5.0mm PER CUSTOM.  
7. HEAT SINKS, LIGHT PIPES, AND HEAT SINK CLIPS SHIPPED ASSEMBLED TO CAGE ASSEMBLY. CAGE ASSEMBLY MAY BE PRESSED INTO THE PCB AS SHIPPED.  
8 DATUM -A- IS TOP SURFACE OF PC BOARD.  
9 DIMENSION APPLIES WITH MODULE INSERTED IN CAGE.  
10 UNPLATED THRU HOLE.

11. MATES WITH QSFP MSA COMPATIBLE TRANSCEIVER.

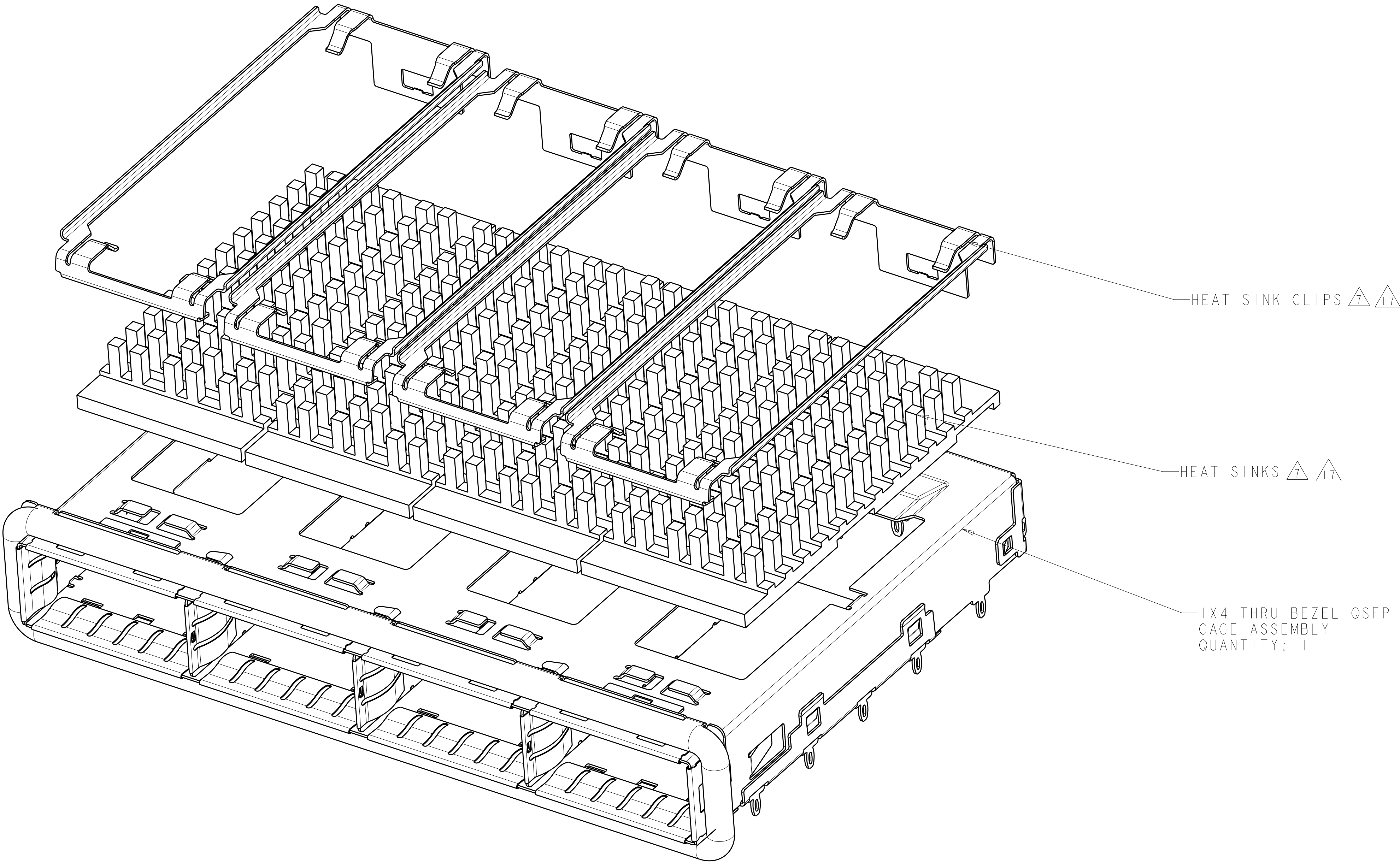
- 12 SURFACE TRACES PERMITTED WITHIN THIS AREA EXCEPT WHERE CAGE STANDOFFS, SHOWN IN DETAIL S, CONTACT PC BOARD.  
13 BASELINE FOR THESE DIMENSIONS IS THE CENTER OF COMPLIANT PIN HOLE.  
14 DATE CODE (YYWWD) MARKED ON TOP OF CAGE AND CONCEALED BY HEAT SINKS APPLIES TO CAGE ASSEMBLY ONLY.  
15 REFERENCE APP SPEC 114-13217 FOR GASKET THICKNESS CALCULATION.  
16 EMI SPRING FINISH: NICKEL PLATING  
HEAT SINK FINISH: BLACK ANODIZED.





23.0	NETWORKING(PIN TYPE)	2170693-3
16.0	SAN(PIN TYPE)	2170693-2
13.7	PCI(PIN TYPE)	2170693-1
B	HEAT SINK PROFILE	PART NUMBER

THIS DRAWING IS A CONTROLLED DOCUMENT.		DWN Robert Gan 10JUL2014 CHK		<div>TE Connectivity</div>	
DIMENSIONS: mm		TOLERANCES UNLESS OTHERWISE SPECIFIED: 0 PLC ±.35 1 PLC ±0.35 2 PLC ±0.25 3 PLC ± 4 PLC ± ANGLES ± FINISH			
MATERIAL		APVD Marshall Chen 10JUL2014 PRODUCT SPEC 108-2286 APPLICATION SPEC 114-13217 WEIGHT -		NAME 1X4 CAGE ASSEMBLY, ENHANCED EMI, W/ GASKET AND HEAT SINKS, QSFP	
CUSTOMER DRAWING		SIZE A100779C=2170693 DRAWING NO		RESTRICTED TO -	
SCALE 1:1		SHEET 1 OF 5		REV A	

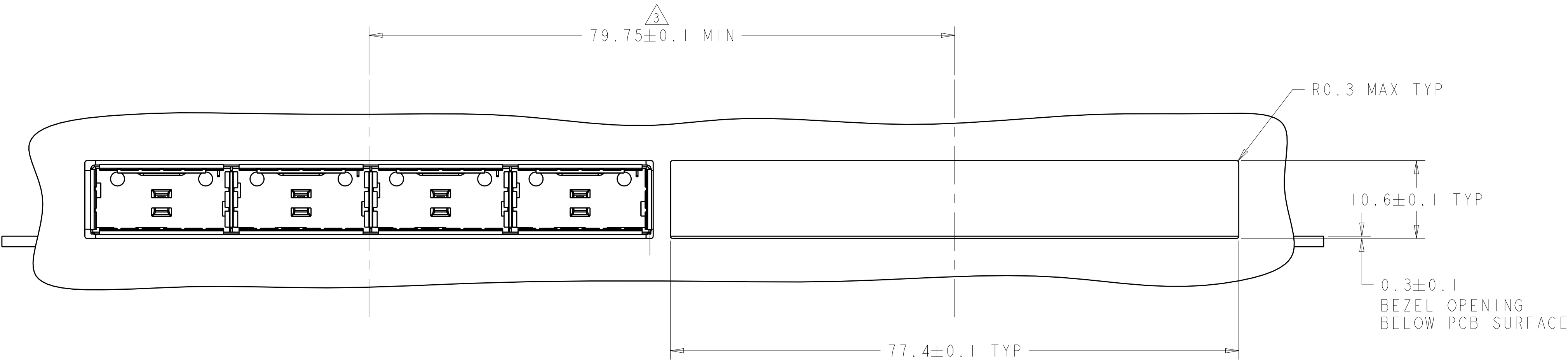
LOC	DIST	REVISIONS					
GP	00	P	LTR	DESCRIPTION	DATE	DWN	APVD
		-	-	SEE SHEET 1	-	-	-



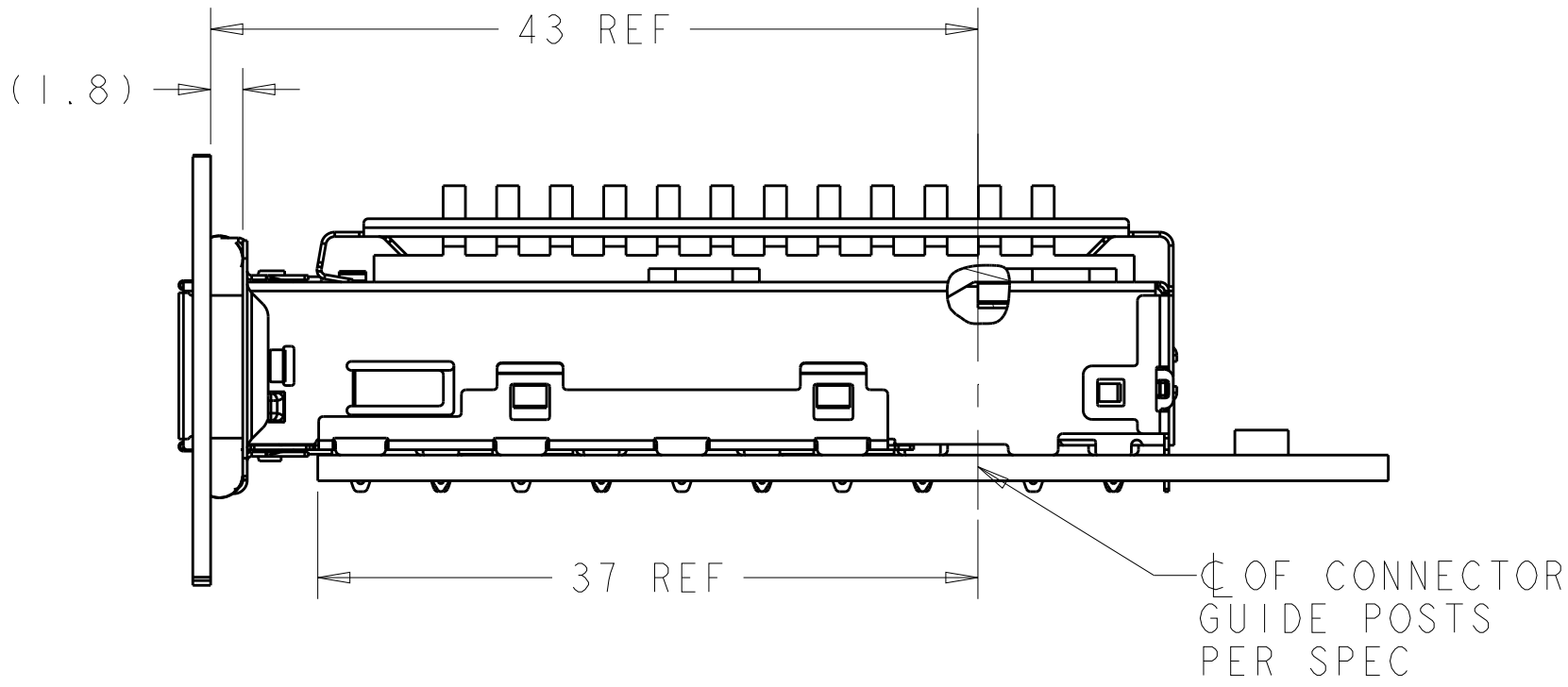
SCALE 4:1

THIS DRAWING IS A CONTROLLED DOCUMENT.		DWN Robert Gan	10JUL2014	 TE Connectivity		
		CHK				
DIMENSIONS:  mm	TOLERANCES UNLESS OTHERWISE SPECIFIED:		APVD Marshall Chen	10JUL2014	NAME  IX4 CAGE ASSEMBLY, ENHANCED EMI, W/ GASKET AND HEAT SINKS, QSFP	
			PRODUCT SPEC			
	0 PLC	±	108-2286		SIZE CAGE CODE DRAWING NO	
	1 PLC	±0.35	APPLICATION SPEC			RESTRICTED TO
	2 PLC	±0.25	114-13217			
	3 PLC	±				
MATERIAL	4 PLC	±			A100779	
	ANGLES	±				
-	FINISH	-	WEIGHT		-	
	-	-	CUSTOMER DRAWING		SCALE	1:1
		-			SHEET	2 OF 5
		-			REV	A

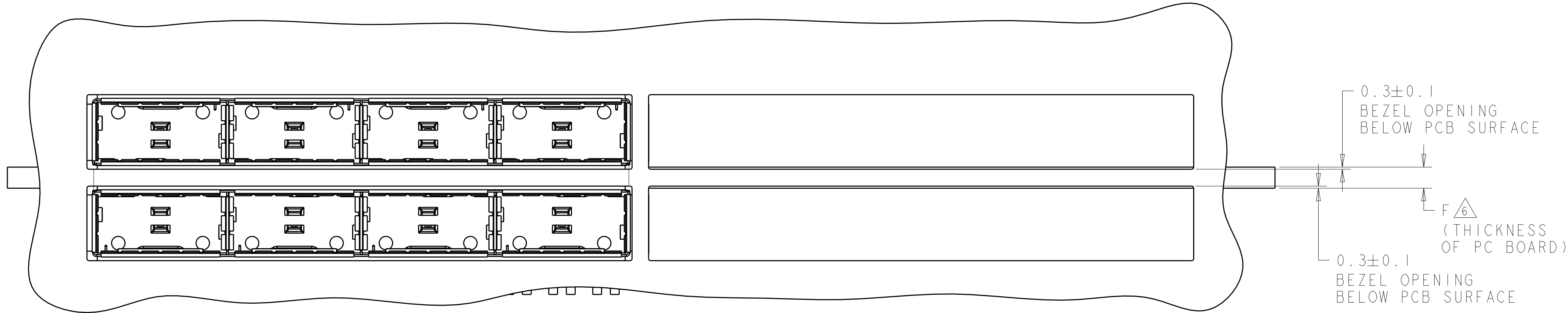
LOC		DIST		REVISIONS					
GP		00		P	LTR	DESCRIPTION	DATE	DWN	APVD
				-	-	SEE SHEET 1	-	-	-



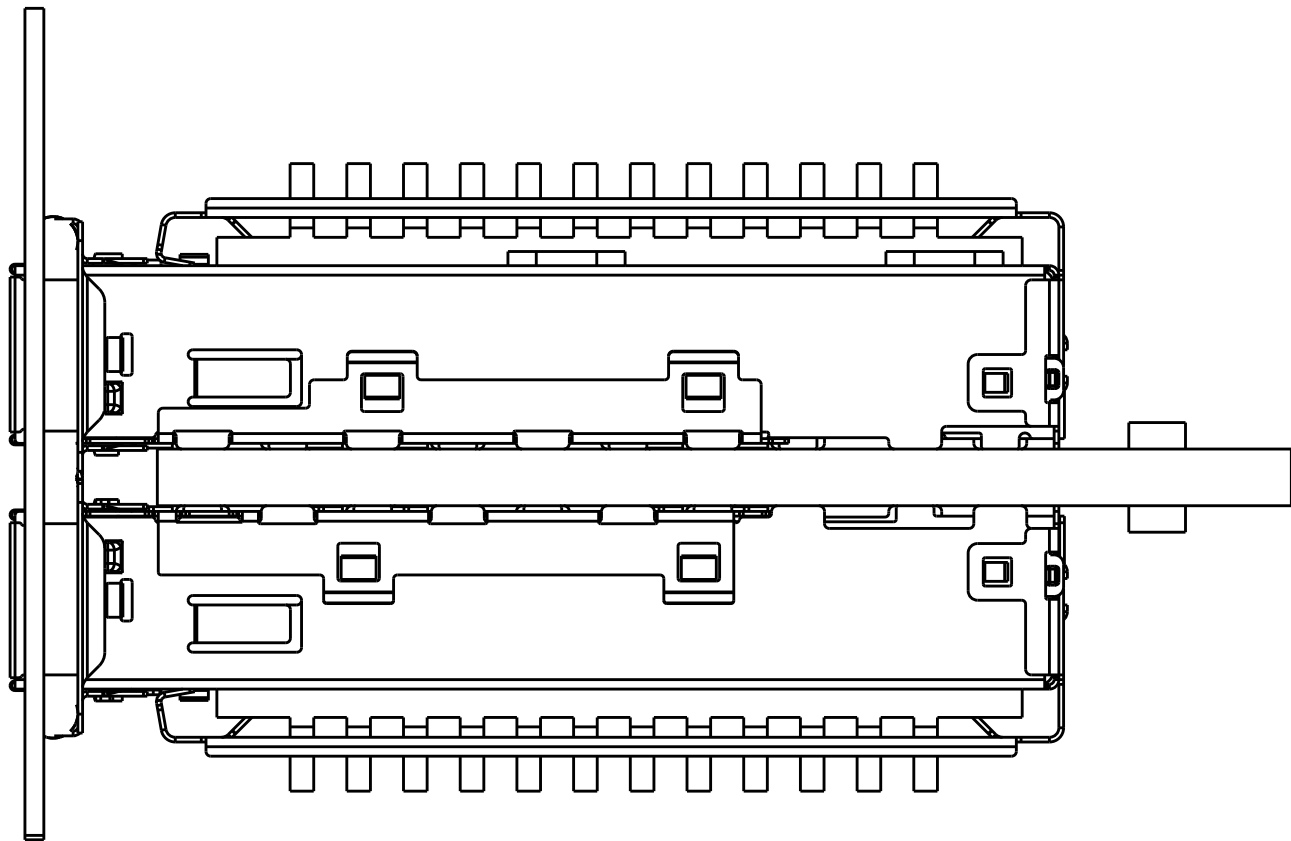
SINGLE SIDE CONFIGURATION  
SCALE 5:2



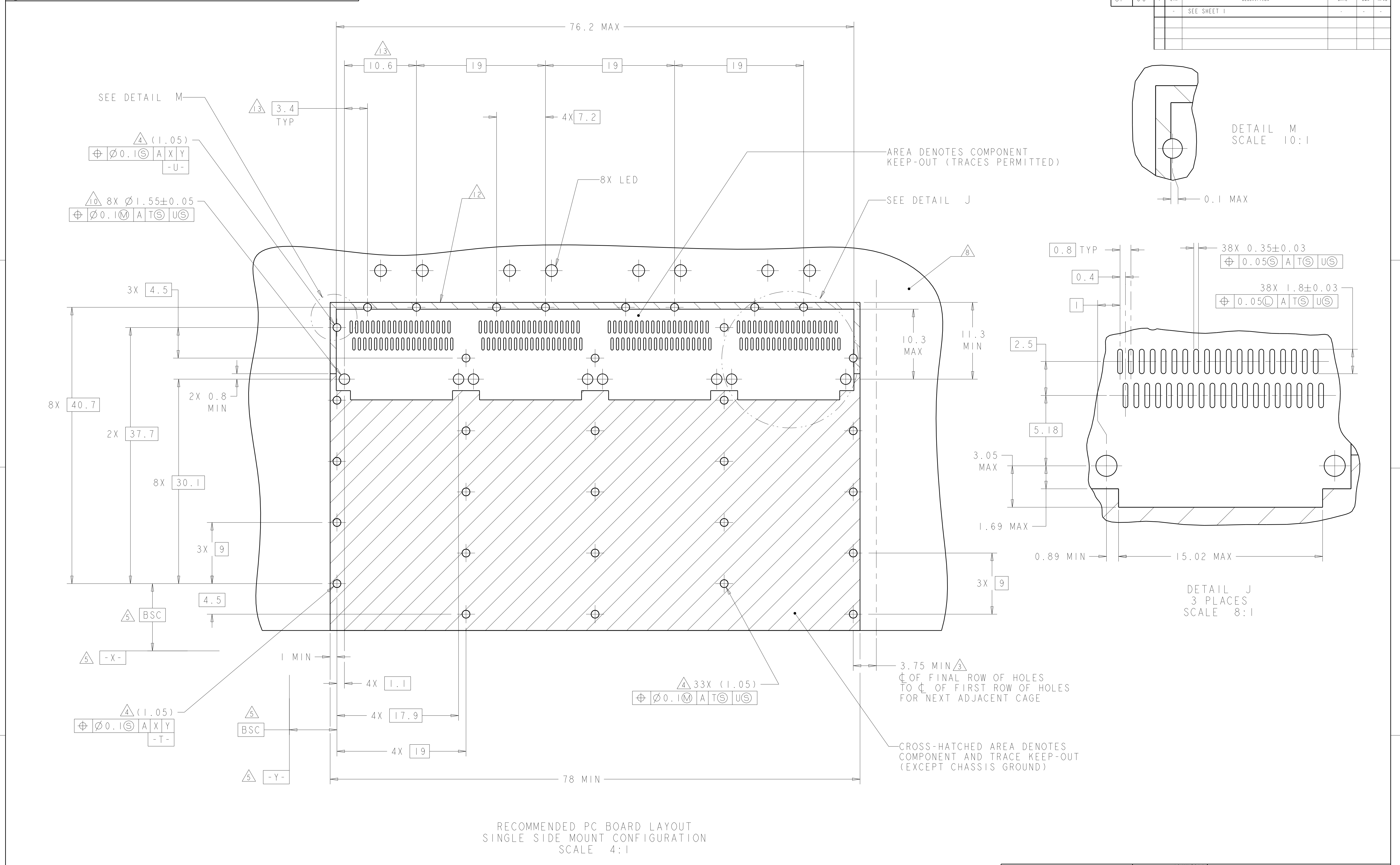
SECTION S-S



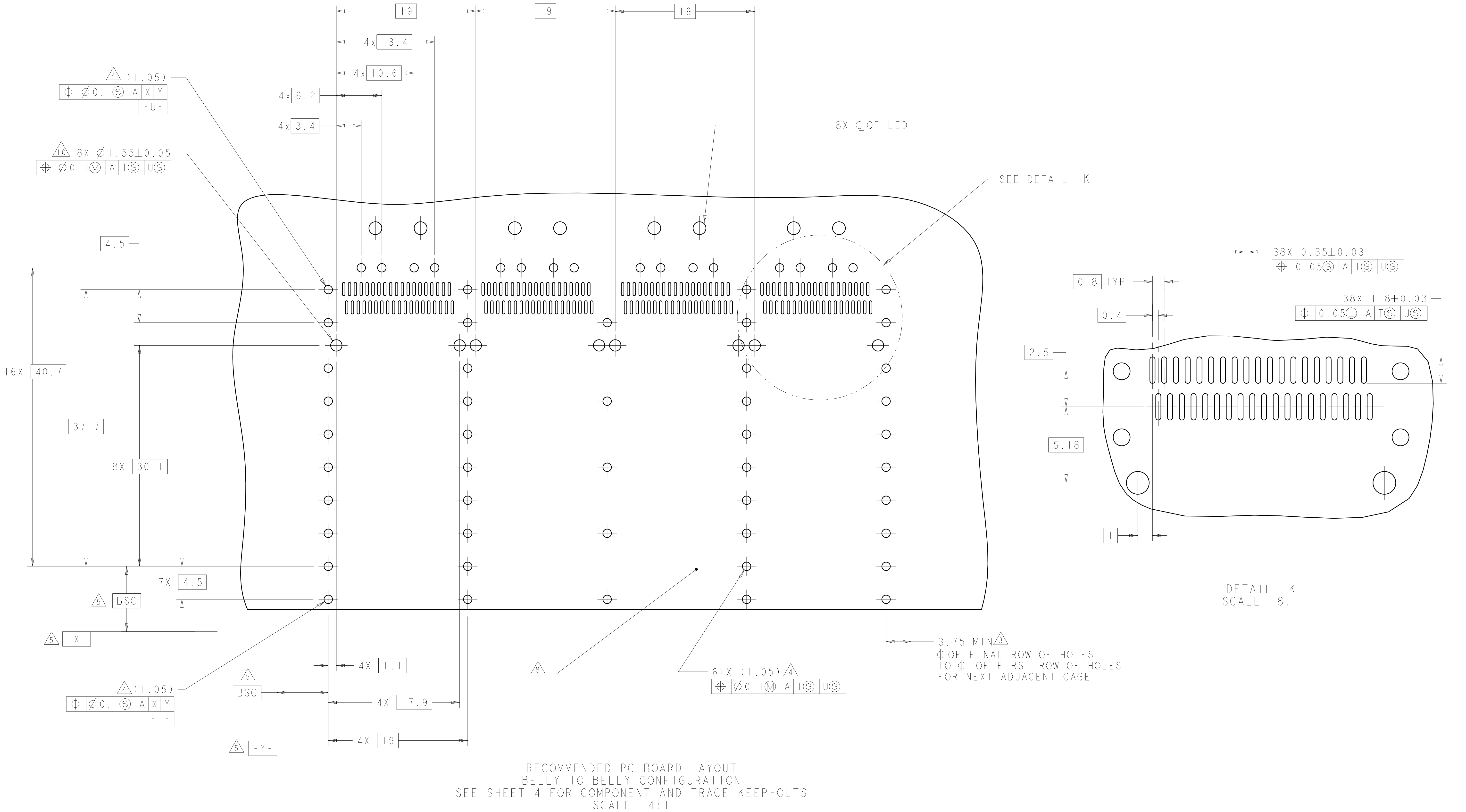
BELLY TO BELLY CONFIGURATION  
SIMILAR TO ONE SIDED  
EXCEPT WHERE NOTED  
SCALE 5:2



THIS DRAWING IS A CONTROLLED DOCUMENT.		DWN Robert Gan	10JUL2014	TE Connectivity	
		CHK			
DIMENSIONS:		TOLERANCES UNLESS OTHERWISE SPECIFIED:		NAME 1X4 CAGE ASSEMBLY, ENHANCED EMI, W/ GASKET AND HEAT SINKS, QSFP	
mm		0 PLC ±.1 1 PLC ±0.35 2 PLC ±0.25 3 PLC ±.1 4 PLC ±.1		SIZE CAGE CODE DRAWING NO	
		ANGLES FINISH		RESTRICTED TO	
MATERIAL		WEIGHT		A100779C=2170693	
		CUSTOMER DRAWING		SCALE 1:1 SHEET 3 OF 5 REV A	



LOC	DIST	REVISIONS				
		P	LTR	DESCRIPTION	DATE	OWN
GP	00	-	-	SEE SHEET 1	-	-



RECOMMENDED PC BOARD LAYOUT  
BELLY TO BELLY CONFIGURATION  
SEE SHEET 4 FOR COMPONENT AND TRACE KEEP-OUTS  
SCALE 4:1

THIS PRODUCT HAS NOT COMPLETED VALIDATION/QUALIFICATION TESTING

THIS DRAWING IS A CONTROLLED DOCUMENT.		OWN Robert Gan	10JUL2014	TE Connectivity	
DIMENSIONS:		CHK			
mm	TOLERANCES UNLESS OTHERWISE SPECIFIED:	APVD	10JUL2014	NAME 1X4 CAGE ASSEMBLY, ENHANCED EMI, W/ GASKET AND HEAT SINKS, QSFP	
	0 PLC ±0.35	PRODUCT SPEC	108-2286	SIZE CAGE CODE DRAWING NO	
	1 PLC ±0.25	APPLICATION SPEC	114-13217	RESTRICTED TO	
	2 PLC ±	WEIGHT	-	A100779C=2170693	
	3 PLC ±	CUSTOMER DRAWING		SCALE 1:1 SHEET 5 OF 5 REV A	
	4 PLC ±				
MATERIAL	FINISH				
-	-				