

## REVISIONS

P	LTR	DESCRIPTION	DATE	DWN	APVD
	R1	REVISED PER ECN-25-315398	07APR2025	MM	LR

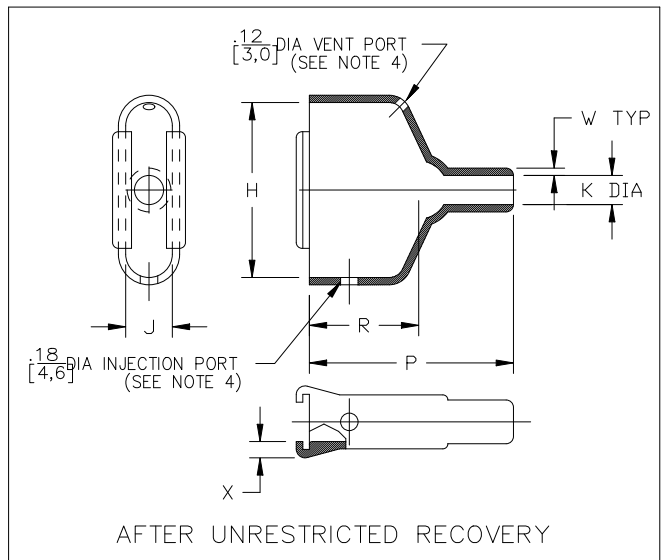
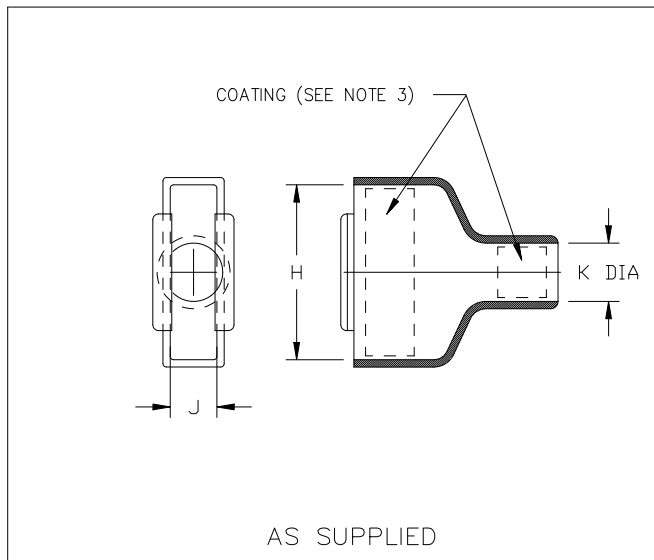


TABLE OF DIMENSIONS

PART NUMBER	H		J		K		P	R	W	X	Weight	This Boot Fits		
	Min	±5%	Min	±5%	Min	Max						Nom	Canon/Cinch	Amphenol Series 17
	a	b	a	b	a	b								
214A011	<u>.85</u> [20,3]	<u>.80</u> [20,3]	<u>.47</u> [10,7]	<u>.42</u> [10,7]	<u>.31</u> [7,9]	<u>.16</u> [4,1]	<u>1.31</u> [33,3]	<u>.75</u> [19,1]	<u>.04</u> [1,0]	<u>.12</u> [3,0]	<u>.0044</u> [2,0]	DE-9	XX09X	
214A021	<u>1.16</u> [28,2]	<u>1.11</u> [28,2]	<u>.47</u> [10,7]	<u>.42</u> [10,7]	<u>.40</u> [10,2]	<u>.21</u> [5,3]	<u>1.53</u> [38,9]	<u>.87</u> [22,1]	<u>.04</u> [1,0]	<u>.12</u> [3,0]	<u>.0057</u> [2,6]	DA-15	XX15X	
214A032	<u>1.71</u> [42,2]	<u>1.66</u> [42,2]	<u>.47</u> [10,7]	<u>.42</u> [10,7]	<u>.55</u> [14,0]	<u>.32</u> [8,1]	<u>1.77</u> [45,0]	<u>1.00</u> [25,4]	<u>.04</u> [1,0]	<u>.12</u> [3,0]	<u>.0088</u> [4,0]	DB-25	XX25X	
214A042	<u>2.36</u> [58,7]	<u>2.31</u> [58,7]	<u>.47</u> [10,7]	<u>.42</u> [10,7]	<u>.68</u> [17,3]	<u>.34</u> [8,6]	<u>2.10</u> [53,3]	<u>1.12</u> [28,4]	<u>.04</u> [1,0]	<u>.12</u> [3,0]	<u>.0148</u> [6,7]	DC-37	XX37X	
214A052	<u>2.32</u> [57,9]	<u>2.28</u> [57,9]	<u>.58</u> [13,7]	<u>.54</u> [13,7]	<u>.75</u> [19,1]	<u>.42</u> [10,7]	<u>2.40</u> [61,0]	<u>1.25</u> [31,8]	<u>.04</u> [1,0]	<u>.12</u> [3,0]	<u>.0159</u> [7,2]	DD-50	XX50X	

TE Connectivity. All Rights Reserved.

I



DIMENSIONS:		DWN	07APR2025	MATERIAL	FINISH	
INCHES		M MAZARIEGOS		-		
TOLERANCES UNLESS OTHERWISE SPECIFIED:		CHK	01APR2025			
		C LIMA				
		APVD	01APR2025			
		L RODRIGUEZ		TE Connectivity		
0 PLC ± -		PRODUCT SPEC		NAME		
1 PLC ± -		-		BOOT, RECTANGULAR,		
2 PLC ± -		APPLICATION SPEC		SUBMINIATURE, STRAIGHT		
3 PLC ± -		-				
4 PLC ± -				SIZE	CAGE CODE	DRAWING NO
ANGLES ± -				A4	06090	C-214A011THRU052
		WEIGHT		RESTRICTED TO		
		0.000000		-		
CUSTOMER DRAWING				SCALE	DNS	SHEET 1 OF 2
				REV R1		

## REVISIONS

P	LTR	DESCRIPTION	DATE	DWN	APVD
	—	SEE SHEET 1	—	—	—

## COMPATABILITY CHART

MATERIAL DASH NO.	MATERIAL DESCRIPTION	RT SPEC	COATING SLASH NO.	COATING S NO.	COATING DESCRIPTION
-3	Polyolefin, Semi-Rigid	RT-301	/42;/86	S-1017;S-1048	Adhesive
-4	Polyolefin, Flexible	RT-1304	/42;/86	S-1017;S-1048	Adhesive
-12	*VITON, Flexible	RT-1312	N/A		
-25	Elastomer, Fluid Resistant	RT-1325	/42;86		
-100	Polyolefin, Semi-flexible ZEROHAL™	RT-1323	/180	S-1030	Adhesive

\*VITON is a Registered Trademark of Dupont

## ORDERING INFORMATION

	214A0XX	-XXX	-XX	/XXX	-0
Base part number	_____	_____	_____	_____	_____
Material dash number (See Compatability Chart)	_____	_____	_____	_____	_____
Modification number	_____	_____	_____	_____	_____
Adhesive slash number (If necessary, see Compatability Chart)	_____	_____	_____	_____	_____
Color Designator	_____	_____	_____	_____	_____

## NOTES

- All dimensions are in  $\frac{\text{inches}}{[\text{millimeters}]}$  ;  $\frac{\text{lbs}}{[\text{gms}]}$
- Dimensions appearing in table are as follows:
  - As Supplied
  - After Unrestricted Recovery
- Coating is optional. As supplied dimensions appearing in table are for uncoated parts. When coating is added, entry diameters will be reduced by .06 max.
- Molding ports are optional. When -00 modification number is specified molding ports will be located as shown.
- Weight shown in table of dimensions is based on polyolefin part.

TE Connectivity. All Rights Reserved.



DIMENSIONS: INCHES	DWN	07APR2025	MATERIAL	FINISH							
	CHK	—									
TOLERANCES UNLESS OTHERWISE SPECIFIED:	APVD	—									
PRODUCT SPEC	—	NAME				—					
APPLICATION SPEC	—	NAME				—					
0 PLC ± — 1 PLC ± — 2 PLC ± — 3 PLC ± — 4 PLC ± — ANGLES ± —	WEIGHT	0.000000	SIZE	A4	CAGE CODE	06090	DRAWING NO	C-214A011THRU052	RESTRICTED TO	—	
			CUSTOMER DRAWING			SCALE	DNS	SHEET	2 OF 2	REV	R1