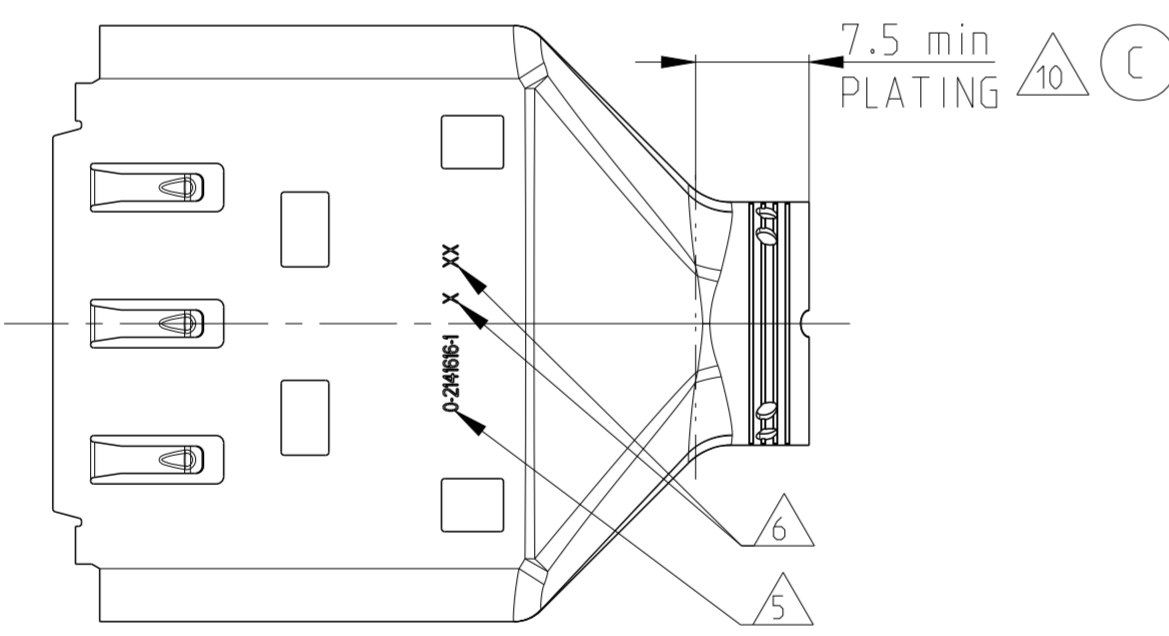
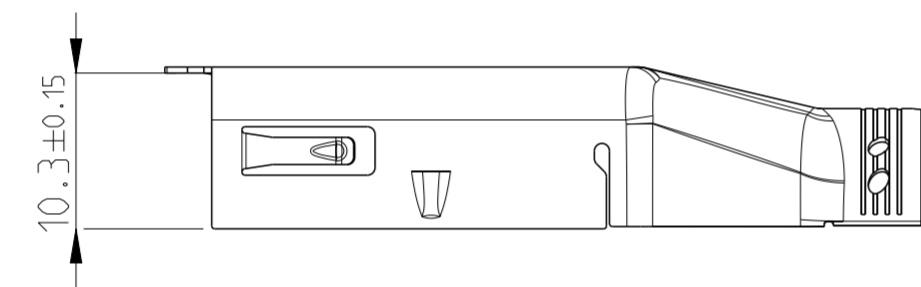
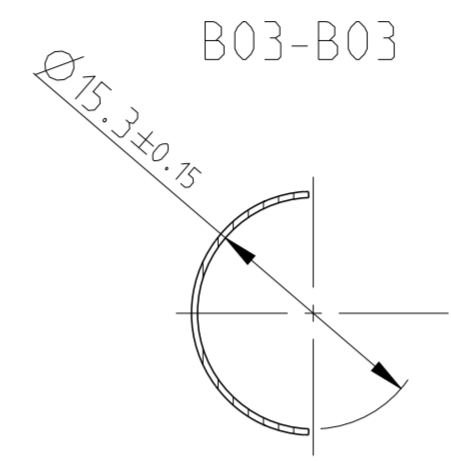
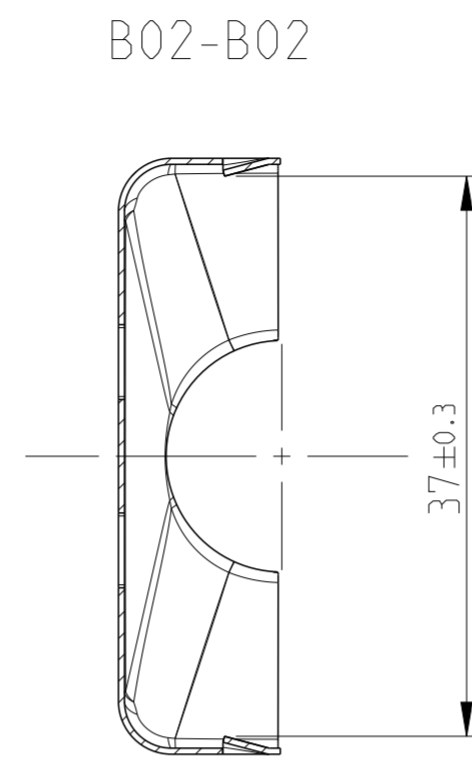
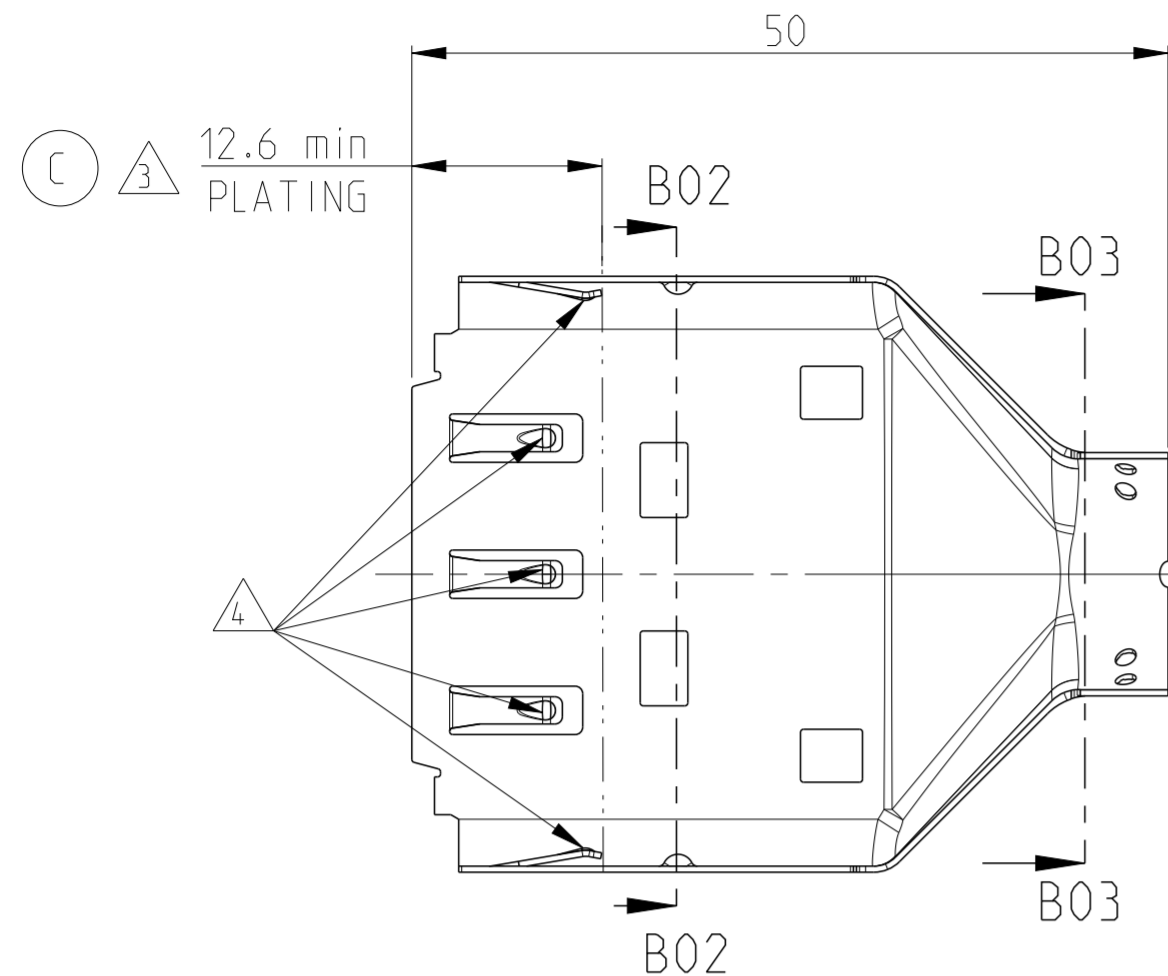
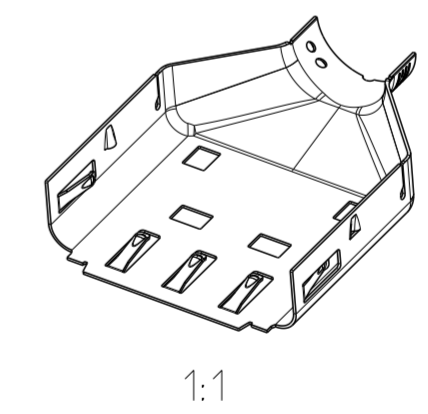


PROJEKT NR.:		REVISIONS			
PRJ-13-000000345		ÄNDERUNGEN			
P	LTR	DESCRIPTION	DATE	DWN	APVD
	A	NEW DRAWING	20DEC2013	MKP	FW I
	B	SEE BALLOON (B)	20OCT2014	VA	FW I
	C	NEW PLATING	06NOV2015	RSC	FW I



- NOTES:
Bemerkungen:
- ONLY THE GERMAN LANGUAGE VERSION IS AUTHORITYATIVE
Massgebend ist nur der deutsche Text
 - BASIS Ni PLATED
Grundbeschichtung Ni
 - Ag (OVER Ni) PLATED AREA
Beschichtungsbereich Ag (ueber Ni)
 - CONTACT AREA CONNECTOR
Kontaktierflaeche Stecker
 - TE PART NUMBER
TE Teilenummer
 - PART REVISION AND PRODUCTION DATE
Teilerevision und Herstellungsdatum
 - ALL SHOWN DIMENSIONS INCLUDING PLATING THICKNESS
Alle dargestellten Abmessungen einschließlich Oberflaeche
 - LAYER PACKING
Lagenweise Verpackung mit Zwischenlagen
 - SURFACE: NO OIL - OR GREASE RESIDUE PERMITTED
Oberflaeche: Keine Oel - oder Fettrueckstaende zulaessig
 - Sn (OVER Ni) PLATED AREA
Beschichtungsbereich Sn (ueber Ni)



DIESE ZEICHNUNG IST EIN KONTROLLIERTES DOKUMENT. BEMASSUNGEN UND TOLERANZEN GEMAESS GPS (ISO STANDARDS).		THIS DRAWING IS A CONTROLLED DOCUMENT. DIMENSIONING AND TOLERANCING PER GPS (ISO STANDARDS).		DWN Maithreya K.P. 03OCT2013	 TE Connectivity
DIMENSIONS: MASSEINHEITEN: (MM)		TOLERANCES UNLESS OTHERWISE SPECIFIED: ALLGEMEINTOLERANZEN		CHK E. Wittrock 03OCT2013	
		0 PLC ± DIN ISO 1 PLC ± 2768-mK 2 PLC ± 3 PLC ± 4 PLC ± ANGLES/WINKEL ± FINISH/OBERFLAECHE/FARBE -		APVD A. Kettler 20DEC2013	NAME SHIELDING, HV CONNECTOR, 5 POS Schirmung, HV Stecker, 5 polig
MATERIAL CuNiSi		WEIGHT GEWICHT	-	SIZE A2	RESTRICTED TO NUR FUER
Customer Drawing		/KUNDENZEICHNUNG		DRAWING NO ZEICHNUNGS-NR. C-2141616	SCALE MASSSTAB 2:1
				SHEET BLATT 1 OF VON 1	REV C

TE - PART-NO.	DESCRIPTION	FORM OF DELIVERY	WEIGHT [g]	SURFACE
0-2141616-1	SHIELDING, 5+2 POS HV CONN	LOOSE PIECE vereinzelt	8.2	Ag/Sn OVER Ni