

LOC		DIST		REVISIONS			
FT	0	REV	PER	ECO	NO	DATE	BY
N		REVISED	PER	ECO-15-007610		23MAY2015	NK

- 1 SOCKET CONTACT ASSEMBLY:
 BODY MATERIAL: BRASS PER MIL-C-50
 FINISH: 0.76um[.000030] MIN GOLD PER MIL-G-45204 FOR A LENGTH OF 5.08[.200] MIN FROM MATING END, 2.54um[.000100] MIN TIN-LEAD PER MIL-T-10727, FOR A LENGTH OF 6.35[.250] MIN FROM OPPOSITE END, BOTH OVER 1.27um[.000050] MIN NICKEL PER QQ-N-290.
 SPRING-MATERIAL: STAINLESS STEEL PER QQ-S-766
 POST-MATERIAL: BRASS PER ASTM-B-134
 FINISH: 2.54um[.000100] MIN TIN-LEAD PER MIL-T-10727 OVER 1.27um[.000050] MIN NICKEL PER QQ-N-290.
- 2 SOCKET CONTACT ASSEMBLIES ARE SELECTIVELY LOADED INTO HOUSING AND LOCATION WAFER AT CIRCUITS A, B, C, D, E, F, H, J, L, P, R, S, T, U, V, W, X, Y, AND AA. ALL OTHER COMPONENTS ARE SUPPLIED UNASSEMBLED.
- 3 SOCKET CONTACT ASSEMBLIES ARE SELECTIVELY LOADED INTO HOUSING AND LOCATION WAFER AT CIRCUITS A,B,C,D,E,F,H,K,P,R,S,T,U,V,W,X,Y AND AA. NO HARDWARE IS SUPPLIED.
- 4 SOCKET CONTACT ASSEMBLIES ARE SELECTIVELY LOADED INTO HOUSING AND LOCATION WAFER AT CIRCUITS A,B,C,D,E,F,H,J,K,P,R,S,T,U,V,W,X,Y,AA AND NN.
- 5 SOCKET CONTACT ASSEMBLIES ARE SELECTIVELY LOADED INTO HOUSING AND LOCATION WAFER AT CIRCUITS A,B,C,D,E,F,H,J,K,L,N,P,R,S,T,U,V,W,X,Y,AA AND NN.
- 6 SOCKET CONTACT ASSEMBLIES ARE SELECTIVELY LOADED INTO HOUSING AND LOCATION WAFER AT CIRCUITS A,B,C,D,E,F,H,L,M,N,P,R,S,T,U,V,W,X,Y,AA,KK AND NN.
- 7 SOCKET CONTACT ASSEMBLY:
 BODY MATERIAL: BRASS PER MIL-C-50
 FINISH: 0.76um[.000030] MIN GOLD PER MIL-G-45204 FOR A LENGTH OF 5.08[.200] MIN FROM MATING END, 2.54um[.000100] MIN TIN PER MIL-T-10727, FOR A LENGTH OF 6.35[.250] MIN FROM OPPOSITE END, BOTH OVER 1.27um[.000050] MIN NICKEL PER QQ-N-290.
 SPRING-MATERIAL: STAINLESS STEEL PER QQ-S-766
 POST-MATERIAL: BRASS PER ASTM-B-134
 FINISH: 2.54um[.000100] MIN TIN PER MIL-T-10727 OVER 1.27um[.000050] MIN NICKEL PER QQ-N-290.
- 8 OBSOLETE PART.

CONTACT PLATING	C	B	A	MOUNTING BRACKET	PART NUMBER
△	14.10 [.555]	3.05 [.120] X 4.32 [.170] ELONGATED	8.38 [.330]	YES	△ 1-213806-7
△	14.53 [.572]	#4-40 UNC TAPPED	8.81 [.347]	YES	△ 1-213806-6
△	15.24 [.600]	#4-40 UNC TAPPED	9.52 [.375]	YES	△ 1-213806-5
△	14.10 [.555]	3.05 [.120] X 4.32 [.170] ELONGATED	8.38 [.330]	YES	△ 1-213806-4
△	-	-	-	NO	1-213806-3
△	-	-	-	NO	△ 1-213806-2
△	14.10 [.555]	3.05 [.120] X 4.32 [.170] ELONGATED	8.38 [.330]	YES	△ 1-213806-1
△	14.10 [.555]	3.05 [.120] X 4.32 [.170] ELONGATED	8.38 [.330]	YES	△ 1-213806-0
△	14.10 [.555]	3.05 [.120] X 4.32 [.170] ELONGATED	8.38 [.330]	YES	△ 213806-9
△	14.53 [.572]	#4-40 UNC TAPPED	8.81 [.347]	YES	△ 213806-8
△	15.24 [.600]	#4-40 UNC TAPPED	9.52 [.375]	YES	△ 213806-7
△	14.10 [.555]	3.05 [.120] X 4.32 [.170] ELONGATED	8.38 [.330]	YES	△ 213806-6
△	-	-	-	NO	213806-4
△	-	-	-	NO	△ 213806-3
△	14.10 [.555]	3.05 [.120] X 4.32 [.170] ELONGATED	8.38 [.330]	YES	△ 213806-2
△	14.10 [.555]	3.05 [.120] X 4.32 [.170] ELONGATED	8.38 [.330]	YES	213806-1

THIS DRAWING IS A CONTROLLED DOCUMENT. **D. BROCKWAY** 08-19-94
C. R. STONE 08-26-94

STE TE Connectivity

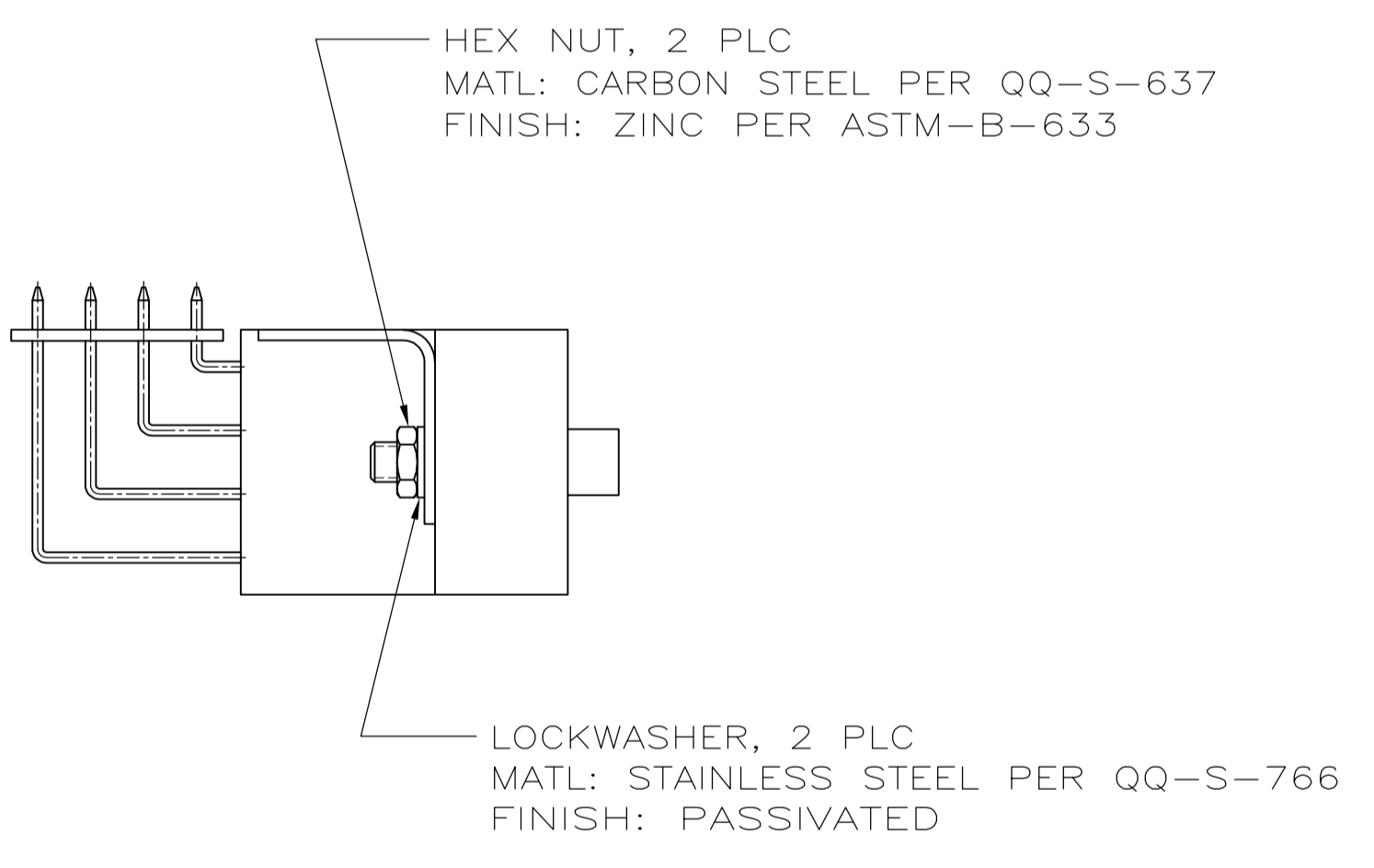
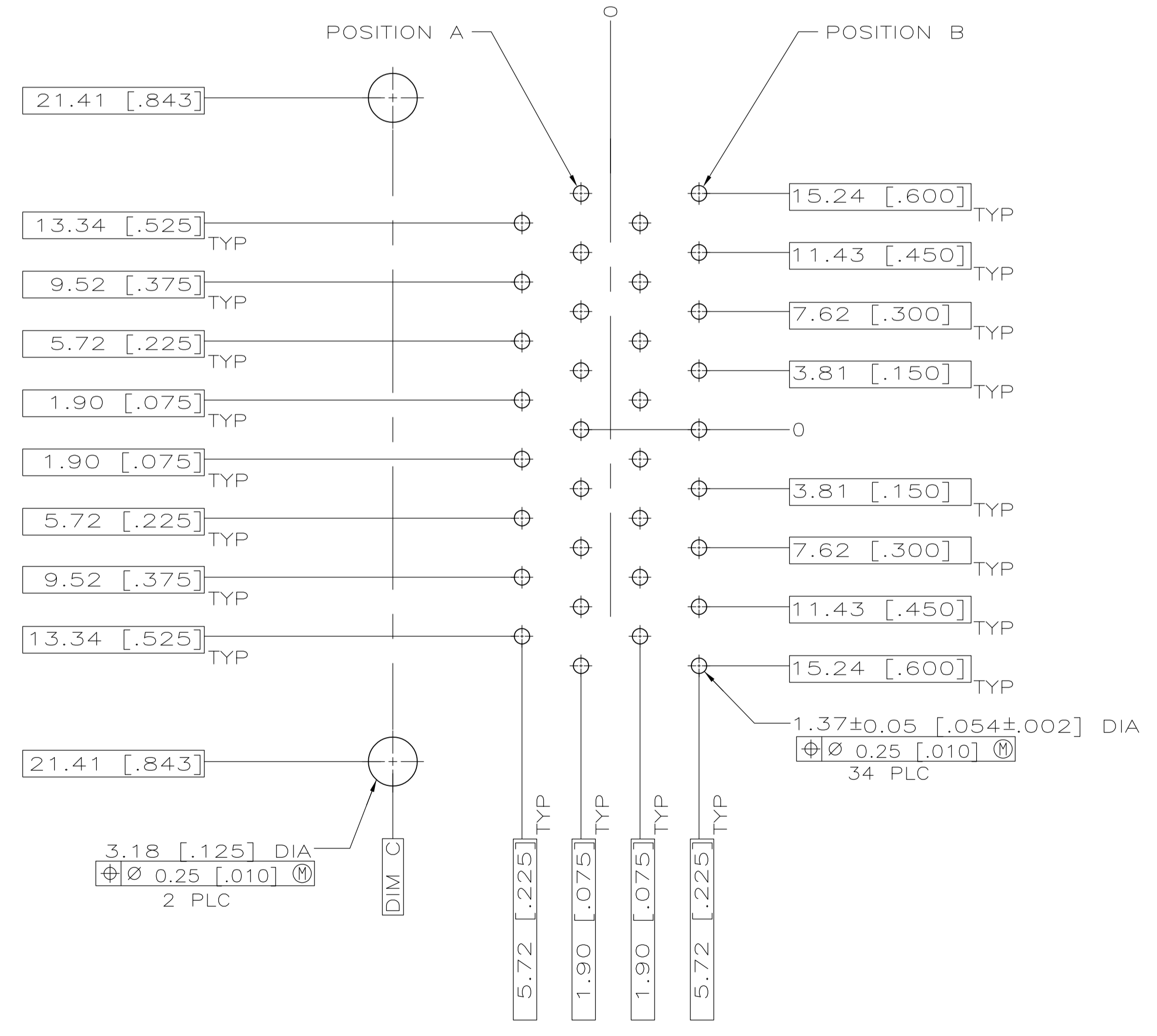
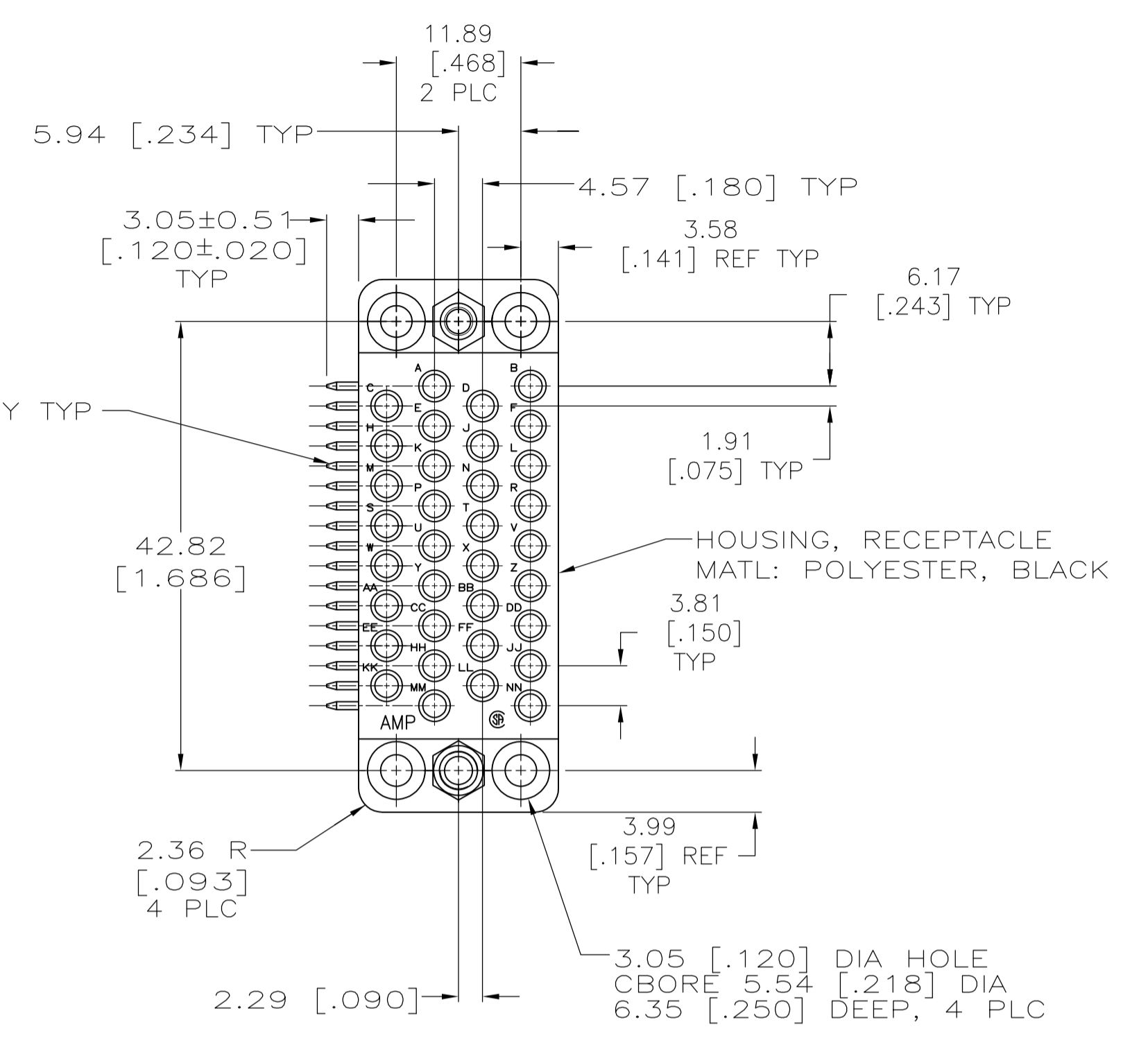
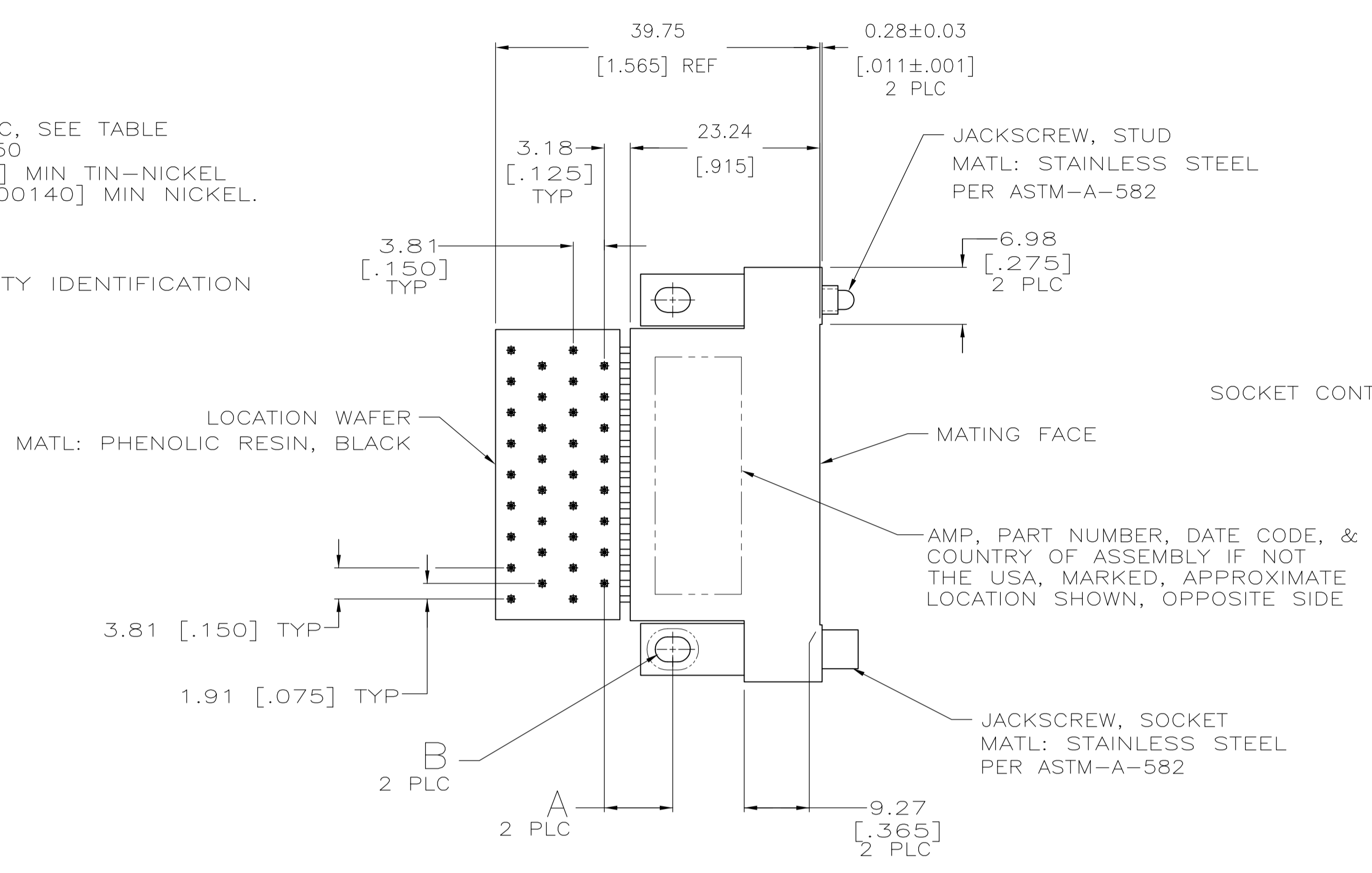
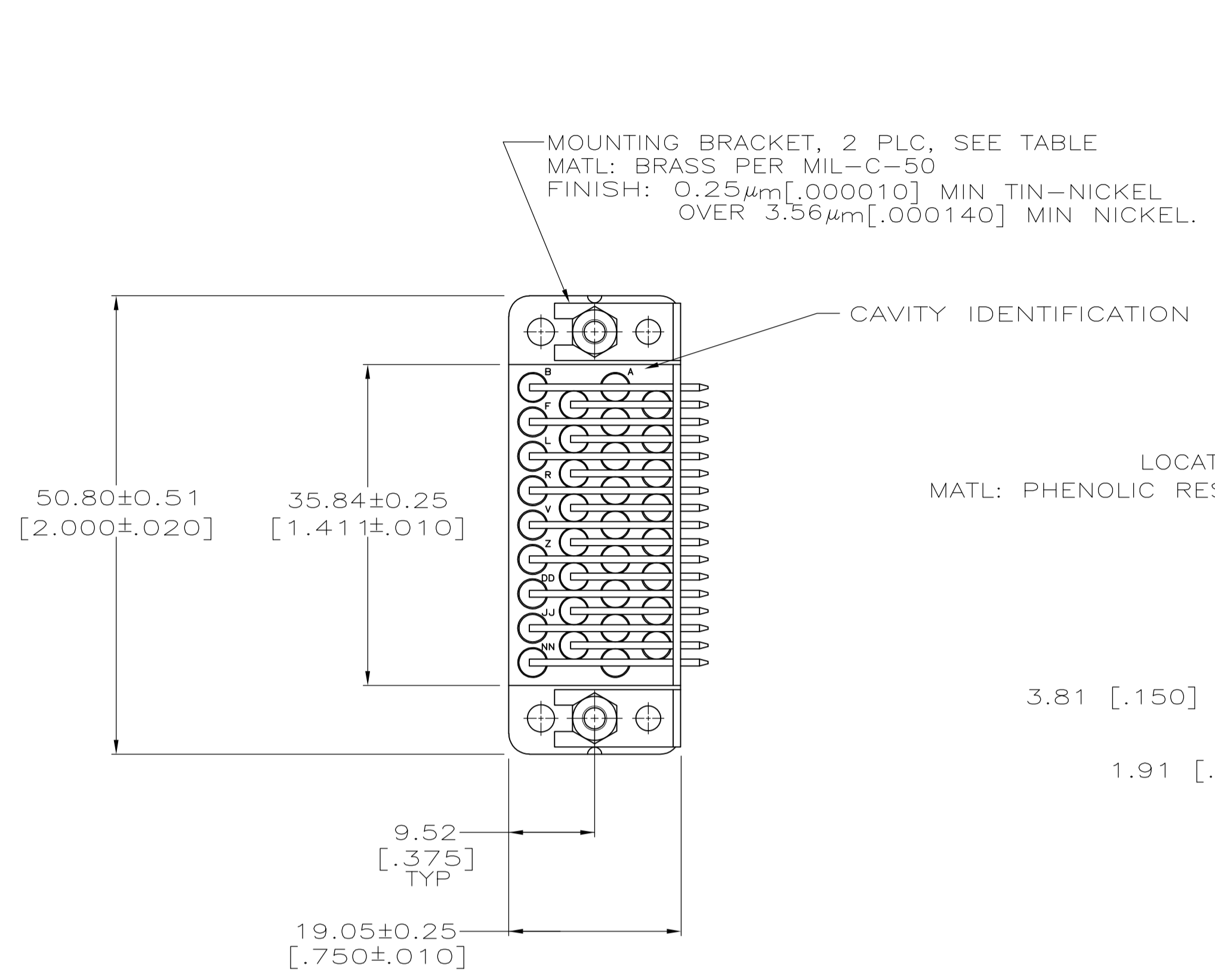
PRODUCT SPEC: CONNECTOR ASSEMBLY, SOCKET, 34 POSITION, RIGHT ANGLE, M SERIES

SIZE: A1 CASE CODE: 00779 DRAWING NO: 213806

WEIGHT: --- RESTRICTED TO: ---

CUSTOMER DRAWING SCALE: 2:1 SHEET: 1 OF 2 REV: N

LOC		DIST		REVISIONS			
P	LTR	DESCRIPTION	DATE	DN	APVD		
-	-	SEE SHEET 1	-	-	-	-	-



RECOMMENDED PC BOARD LAYOUT
 SCALE 4:1

THIS DRAWING IS A CONTROLLED DOCUMENT.		DIN D.BROCKWAY 08-19-94		STE TE Connectivity																
DIMENSIONS: mm [INCHES]		TOLERANCES UNLESS OTHERWISE SPECIFIED:		NAME																
<table border="1"> <tr><td>0 PLC</td><td>±</td><td>-</td></tr> <tr><td>1 PLC</td><td>±</td><td>-</td></tr> <tr><td>2 PLC</td><td>±</td><td>0.13 [.005]</td></tr> <tr><td>3 PLC</td><td>±</td><td>-</td></tr> <tr><td>4 PLC</td><td>±</td><td>-</td></tr> </table>		0 PLC	±	-	1 PLC	±	-	2 PLC	±	0.13 [.005]	3 PLC	±	-	4 PLC	±	-	APVD		PRODUCT SPEC	
0 PLC	±	-																		
1 PLC	±	-																		
2 PLC	±	0.13 [.005]																		
3 PLC	±	-																		
4 PLC	±	-																		
MATERIAL SEE CALLOUTS		FINISH SEE CALLOUTS		APPLICATION SPEC																
CUSTOMER DRAWING		WEIGHT		SIZE CAGE CODE DRAWING NO																
SCALE 2:1		SHEET 2 OF 2		REV N																