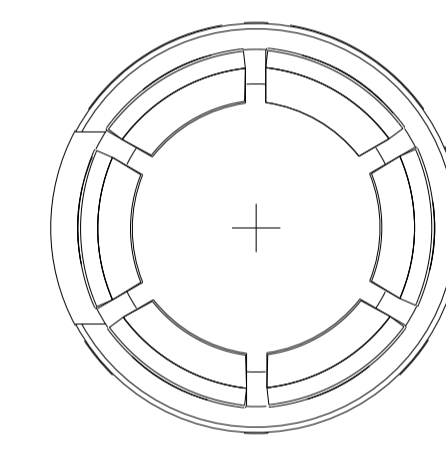
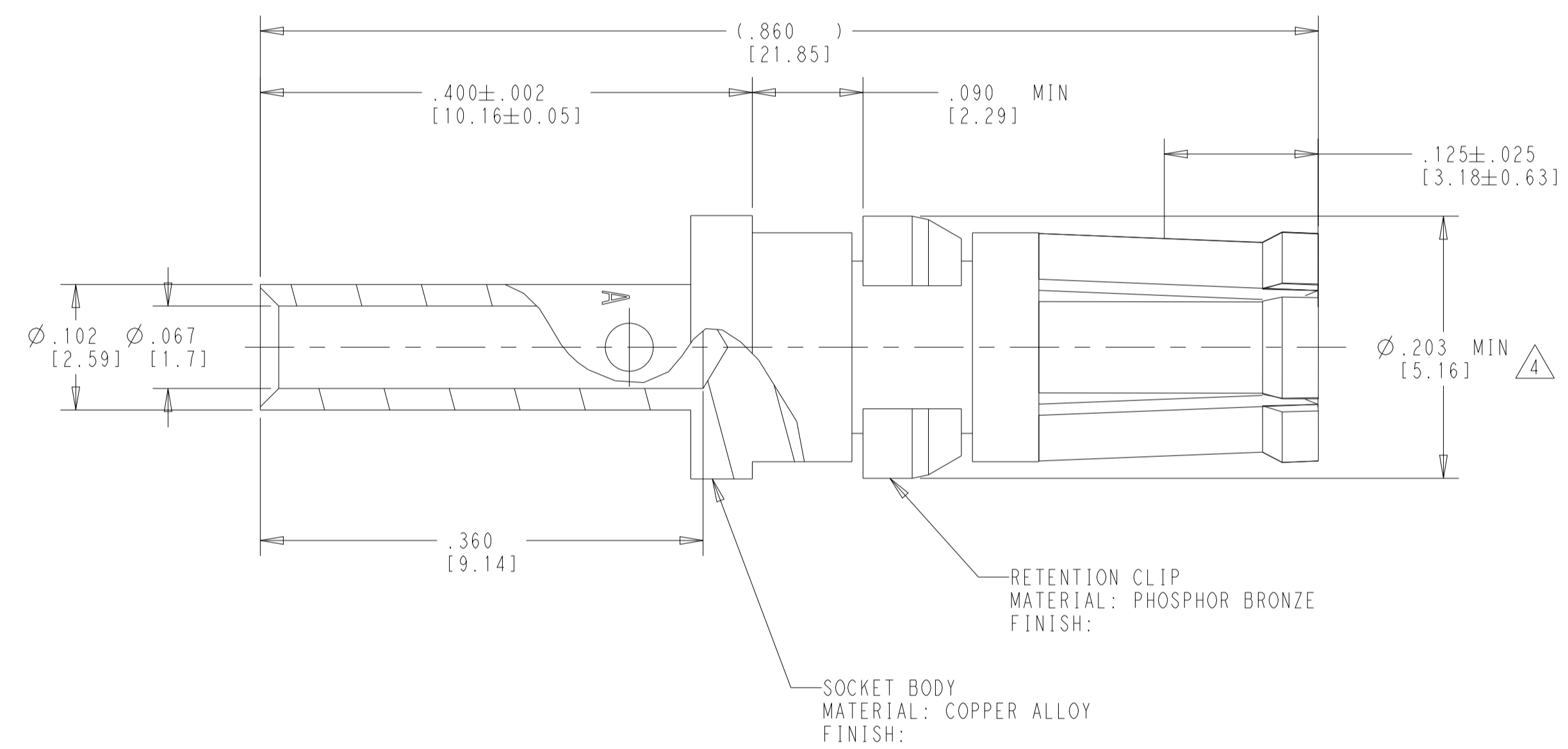
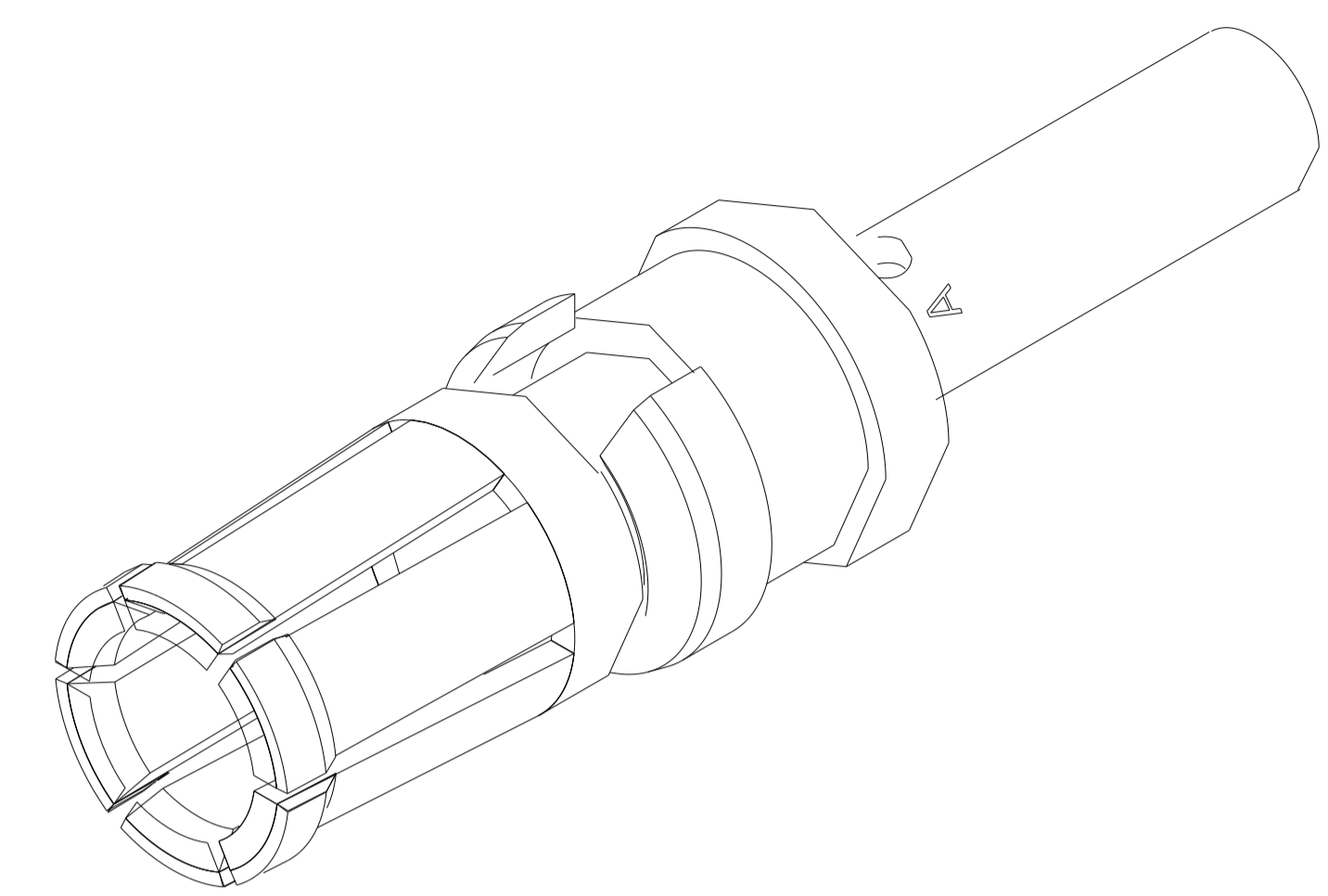


| REVISIONS | | | | |
|-----------|-----|-------------------------------|-----------|--------|
| P | LTN | DESCRIPTION | DATE | APVD |
| J | | ECN-23-227208; DRW REG W/CREO | 08AUG2023 | DR JHW |
| | | | | |
| | | | | |



- NOTES:
- MATES WITH TEC P/N 212013-1 IN AMPLIMITE CONNECTOR ASSEMBLIES ONLY
 - APPROVED CRIMP TOOLING: DANIELS CRIMP TOOL P/N FT8, DANIELS POSITIONER P/N TP731, STRIP LENGTH = .375 [9.53], #16 AWG SETTING 8, #18 AWG SETTING 6.
NOTE: USE OF ANY UNAPPROVED TOOLING WILL RESULT IN CRIMPED TERMINATIONS THAT ARE NOT QUALIFIED
 - WIRE BARREL ACCEPTS #16 -#18 AWG STRANDED WIRE
 - RETENTION CLIP DIAMETER TO BE MEASURED WITH RING GAGE
 - FINISH:
CONTACT: GOLD PLATE .000050 [.00127] MIN THK PER ASTM-B-488 OVER
NICKEL UNDERPLATE .000050 [.00127] MIN THK PER PER QQ-N-290
RETENTION CLIP: NICKEL PLATE .000050 [.00127] MIN THK PER PER QQ-N-290
 - RESTRICTED PART NUMBER

| | |
|---------------|-------------|
| $\triangle 6$ | 1-212014-1 |
| | 212014-2 |
| | 212014-1 |
| | PART NUMBER |

| | | | |
|--|--------------|----------------------------|--|
| THIS DRAWING IS A CONTROLLED DOCUMENT. | | DWN: C.C. THOMAS 10NOV2000 | |
| DIMENSIONS: IN [MM] | | CHK: D. MILLER 10NOV2000 | |
| TOLERANCES UNLESS OTHERWISE SPECIFIED: | | APVD: D. MILLER 10NOV2000 | NAME: CONTACT ASSY, SOCKET CRIMP TYPE, SIZE 8, WIRE SIZE 16-18 AWG |
| 0 PLC | ± | PRODUCT SPEC | SIZE: CAGE CODE: DRAWING NO: RESTRICTED TO |
| 1 PLC | ± | APPLICATION SPEC | A 00779 ©=212014 |
| 2 PLC | ± | FINISH | SCALE: 10:1 SHEET 1 OF 1 REV J |
| 3 PLC | ±.005 (0.13) | | |
| 4 PLC | ± | | |
| ANGLES | ± | | |
| MATERIAL | | WEIGHT | CUSTOMER DRAWING |