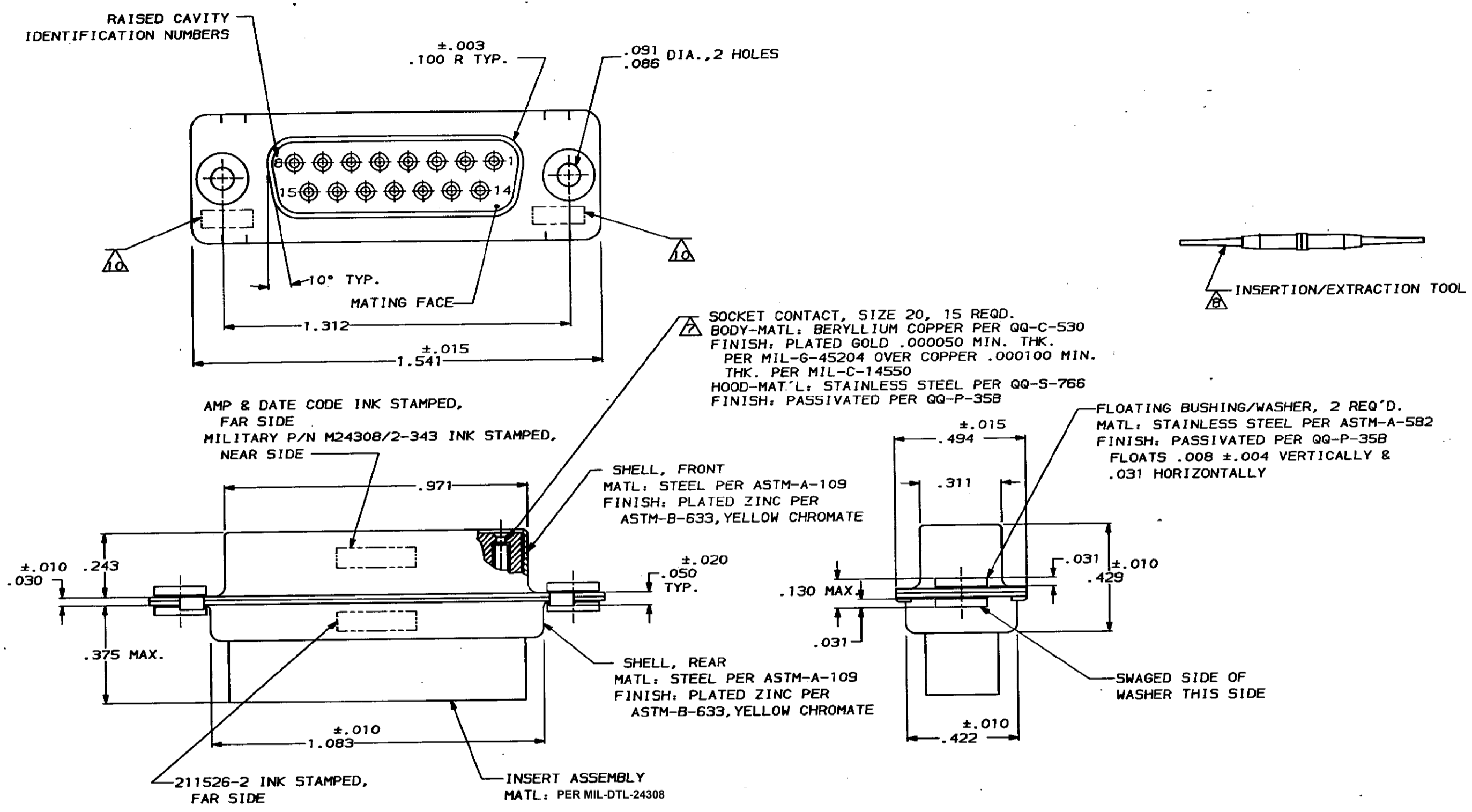


PRG	LOC	DTST	REV	ZONE	LTR	DESCRIPTION	DATE	APPD
5066	DF	DO				0 RELEASED	7/1/85	DE
						A REV-ECN DF-1034	MC	2-10-88
						B REV PER ECO-15-005914	KG	28MAY15



1. THIS RECEPTACLE WILL MATE WITH ANY 15 POSN., SIZE 2 PLUG IN AMPLIMITE SERIES.
2. MAXIMUM WIRE INSULATION TO BE USED WITH THIS RECEPTACLE IS  $.068$  DIA.
3. SST RETENTION CLIPS ARE INCLUDED IN INSERTS.

- $\triangle$  PACKAGE STAMPED M24308/2-483 & AMP P/N 211526-1
- $\triangle$  PACKAGE STAMPED M24308/2-343 & AMP P/N 211526-2
- $\triangle$  PACKAGE STAMPED M24308/2-354 & AMP P/N 211526-3
- $\triangle$  AMP P/N 205090-1; MIL P/N 63-368, INCLUDED IN KIT.
- $\triangle$  AMP P/N 91067-2; MIL P/N M81969/1-02.
- $\triangle$  CONNECTOR SUPPLIED WITHOUT CONTACTS, SHOWN FOR ILLUSTRATION ONLY.
- $\triangle$  UL/CSA DESIGNATION STAMPED IN THIS AREA.

SAME AS -1 EXCEPT: $\triangle$ $\triangle$ $\triangle$ $\triangle$	211526-3
SAME AS -1 EXCEPT: $\triangle$ $\triangle$ $\triangle$	211526-2
AS SHOWN $\triangle$ $\triangle$ $\triangle$	211526-1

DO NOT SCALE PRINT. UNLESS SPECIFIED DIMENSIONS IN INCHES. TOLERANCES ON:		DR 7-1-85 D. ERDMAN	
2 PLC DEC $\pm$	3 PLC DEC $\pm .005$	CHK 9-18-85 R. GRZYBOWSKI	
ANGLES $\pm 0^\circ 30'$		APPD 9-20-85 L. ROP'IER	
		APPD 9-25-85 G. SACUNAS	
MATERIAL	SEE CALLOUT	PRODUCT SPEC	
FINISH	SEE CALLOUT	APPLICATION SPEC	
		WEIGHT	

<b>AMP</b> AMP INCORPORATED Murrysburg, Pa. 17105			
NAME RECEPTACLE ASS'Y., AMPLIMITE 15 POSN., SIZE 2, SERIES 109, W/DUAL FLOAT BUSHINGS			
SIZE	FSCM NO	DRAWING NO	
<b>D</b>	00779	211526	
SCALE	NTS	SHEET	1 OF 1