

WHEN 'L' MODIFICATION IS SPECIFIED,  
COUPLING NUT SHALL HAVE 3 LOCK WIRE HOLES,  
120° APART



## CODE 40 - HEAT SHRINK BOOT BACKSHELL

209M412-19B-DL

SERIES \_\_\_\_\_  
 ORDER NUMBER (TABLE 1) \_\_\_\_\_  
 MATERIAL \_\_\_\_\_  
 REFER TO CH00-0250-004  
 FINISH \_\_\_\_\_  
 REFER TO CH00-0250-004  
 MODIFICATION CODE \_\_\_\_\_  
 REFER TO CH00-0250-004

### NOTES:

1. THIS PRODUCT IS DESIGNED TO TERMINATE A HEAT SHRINKABLE LIPPED BOOT TO A CONNECTOR.
2. FOR ADDITIONAL DIMENSIONS, ORDERING INFORMATION AND MODIFICATIONS, SEE CH00-0250-004.
3. BACKSHELL TO BE PERMANENTLY MARKED/BAGGED AND LABELLED WITH CODE IDENTIFICATION NUMBER AND PART NUMBER. (e.g. 06090-209M412-19B).
4. KNURL INSIDE BOOT GROOVE MAY BE SUPPLIED AT MANUFACTURER'S OPTION.
- ⑤ BACKSHELL MATES TO MIL-C-38999 SERIES III & IV, CLASS C, F, K AND W, D38999/20, /24, /26, /40, /46, /47 CONNECTORS AND WHEN SO MATED PROVIDE A WATER-TIGHT SEAL MEETING THE REQUIREMENTS OF MIL-C-85049, PAR. 3.5.7.
- ⑥ WHEN 'L' MODIFICATION IS SPECIFIED, COUPLING NUT SHALL HAVE 3 LOCK WIRE HOLES, 120° APART.
7. THIS IS A FUNCTIONAL EQUIVALENT OF MIL-C-85049/69
- ⑧ WHEN GROUNDING SCREW MODIFICATION IS ORDERED 18,50 MAX BECOMES 27,20 MAX AND 25,50 MAX BECOMES 34,20 MAX

|  |                           |                    |   |  |   |   |
|--|---------------------------|--------------------|---|--|---|---|
| DRAWN  | W.RUST                    | DATE<br>11/09/2015 | <br>3RD ANGLE<br>PROJECTION<br>NOT TO<br>SCALE | <b>TITLE:</b><br><br>HEAT SHRINK BOOT BACKSHELL  | <br>Polamco<br> |   |
| CHECKED  |                           | 11/09/2015         |   |  |   |   |
| APPROVED   | K.SHEPPARD                | 11/09/2015         |   |  |   | UNLESS OTHERWISE SPECIFIED<br>ALL DIMENSIONS IN MILLIMETRES<br><b>GENERAL TOL</b><br>LINEAR +/-0.25MM<br>ANGULAR +/- 1° |
| APPROVED   | H.SMITH                   | 15/10/2015         |   |  |   |   |
| <b>REVISIONS</b>                                   |                           |                    |   | <b>ASSY USED ON:</b><br><br>MIL-DTL-39888 SERIES III & IV  | DRAWING NO: 209M4XX<br>DRAWING REV: J<br>SHT 1  |   |
| LTR  | DESCRIPTION               | DATE               | APPROVED  |  |   |   |
| H  | REVISED PER ECO-15-002406 | 19/02/15           | H.SMITH   |  |   |   |
| J  | REVISED PER ECO-15-013980 | 15/10/2015         | H.SMITH   |  |   |   |
| TE CAGE CODE: 06090<br>POLAMCO/TE CAGE CODE: U5792 |                           |                    |   | TE CONNECTIVITY - POLAMCO LTD RESERVES THE RIGHT TO AMEND THIS DRAWING AND THE INFORMATION SET FORTH HEREON AT ANY TIME. USERS SHOULD INDEPENDENTLY EVALUATE THE SUITABILITY OF THE PRODUCT FOR THEIR APPLICATION. |   |   |

WHEN 'L' MODIFICATION IS SPECIFIED,  
COUPLING NUT SHALL HAVE 3 LOCK WIRE HOLES,  
120° APART

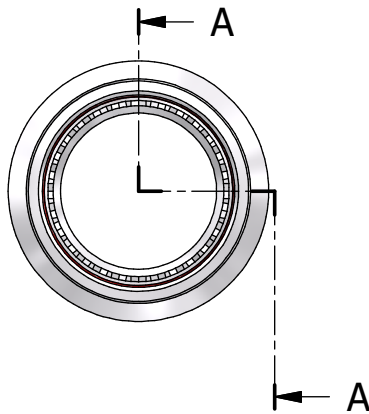
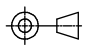


TABLE 1

| BASE PART NUMBER | ORDER.NO. $\text{\textcircled{5}}$ | SHELL SIZE COM'L / MIL | A THREAD  | ØB MAX | X +0,20/-0,00 | ØY MAX | ØZ MIN |
|------------------|------------------------------------|------------------------|-----------|--------|---------------|--------|--------|
| 209M408          | 08                                 | 9 / A                  | M12 × 1.0 | 18,0   | 1,12          | 13,50  | 6,80   |
| 209M410          | 10                                 | 11 / B                 | M15 × 1.0 | 21,0   | 1,12          | 15,40  | 10,30  |
| 209M412          | 12                                 | 13 / C                 | M18 × 1.0 | 24,5   | 1,12          | 19,70  | 13,60  |
| 209M414          | 14                                 | 15 / D                 | M22 × 1.0 | 29,0   | 1,12          | 21,30  | 16,30  |
| 209M416          | 16                                 | 17 / E                 | M25 × 1.0 | 32,5   | 1,12          | 24,50  | 19,50  |
| 209M418          | 18                                 | 19 / F                 | M28 × 1.0 | 35,5   | 1,12          | 26,50  | 21,90  |
| 209M420          | 20                                 | 21 / G                 | M31 × 1.0 | 37,0   | 1,75          | 31,00  | 25,20  |
| 209M422          | 22                                 | 23 / H                 | M34 × 1.0 | 40,0   | 1,75          | 34,40  | 28,30  |
| 209M424          | 24                                 | 25 / J                 | M37 × 1.0 | 43,5   | 1,75          | 36,60  | 31,50  |

|                  |                           |                    |  |
|------------------|---------------------------|--------------------|--|
| DRAWN            | W.RUST                    | DATE<br>11/09/2015 | <br>3RD ANGLE PROJECTION<br>NOT TO SCALE<br><br>UNLESS OTHERWISE SPECIFIED<br>ALL DIMENSIONS IN MILLIMETRES<br><b>GENERAL TOL</b><br>LINEAR +/-0,25MM<br>ANGULAR +/- 1° |
| CHECKED          |                           | 11/09/2015         |  |
| APPROVED         | K.SHEPPARD                | 11/09/2015         |  |
| APPROVED         | H.SMITH                   | 15/10/2015         |  |
| <b>REVISIONS</b> |                           |                    |  |
| LTR              | DESCRIPTION               | DATE               | APPROVED   |
| H                | REVISED PER ECO-15-002406 | 19/02/15           | H.SMITH  |
| J                | REVISED PER ECO-15-013980 | 15/10/2015         | H.SMITH  |

TITLE:

HEAT SHRINK BOOT BACKSHELL

ASSY USED ON:

MIL-DTL-39888 SERIES III & IV



TE CONNECTIVITY - POLAMCO LTD RESERVES THE RIGHT TO AMEND THIS DRAWING AND THE INFORMATION SET FORTH HEREON AT ANY TIME. USERS SHOULD INDEPENDENTLY EVALUATE THE SUITABILITY OF THE PRODUCT FOR THEIR APPLICATION.

DRAWING NO:  
**209M4XX**

DRAWING REV:  
**J**

SHT  
**2**

TE CAGE CODE: 06090  
POLAMCO/TE CAGE CODE: U5792